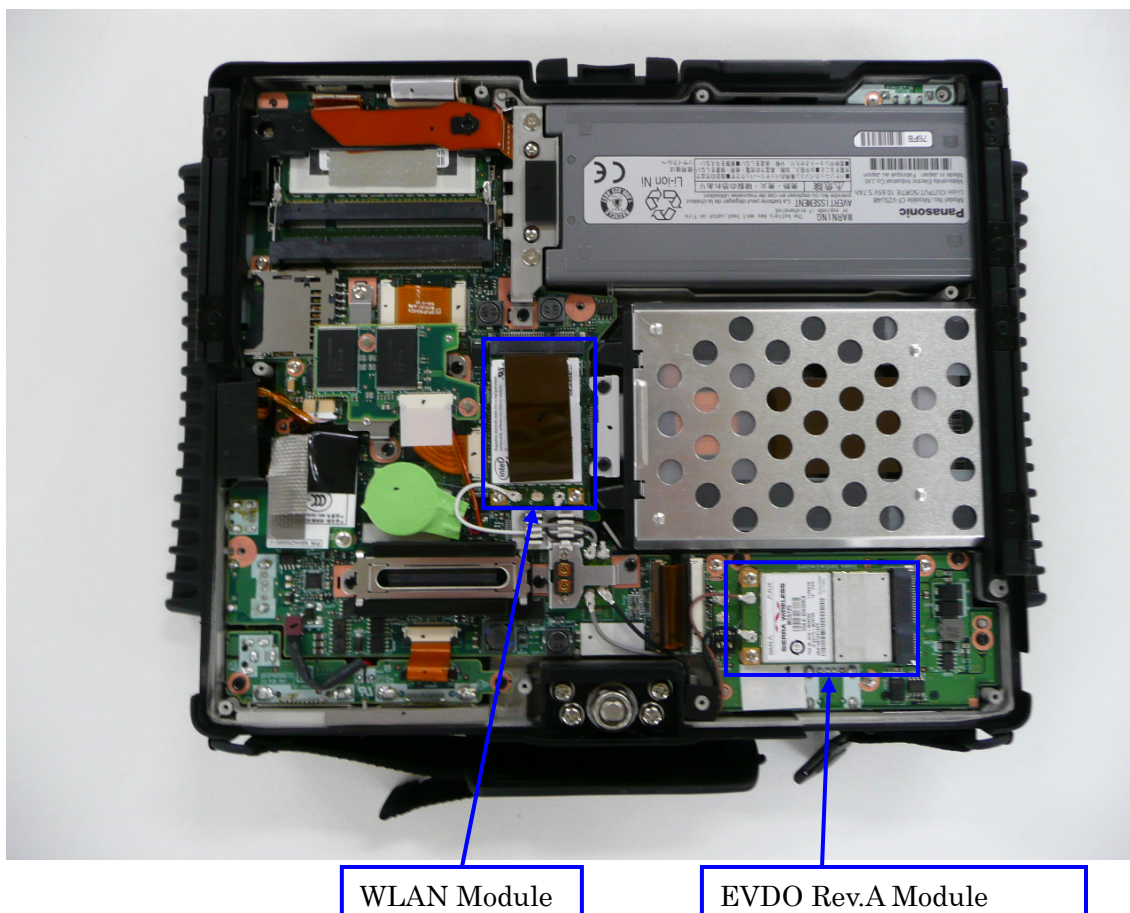


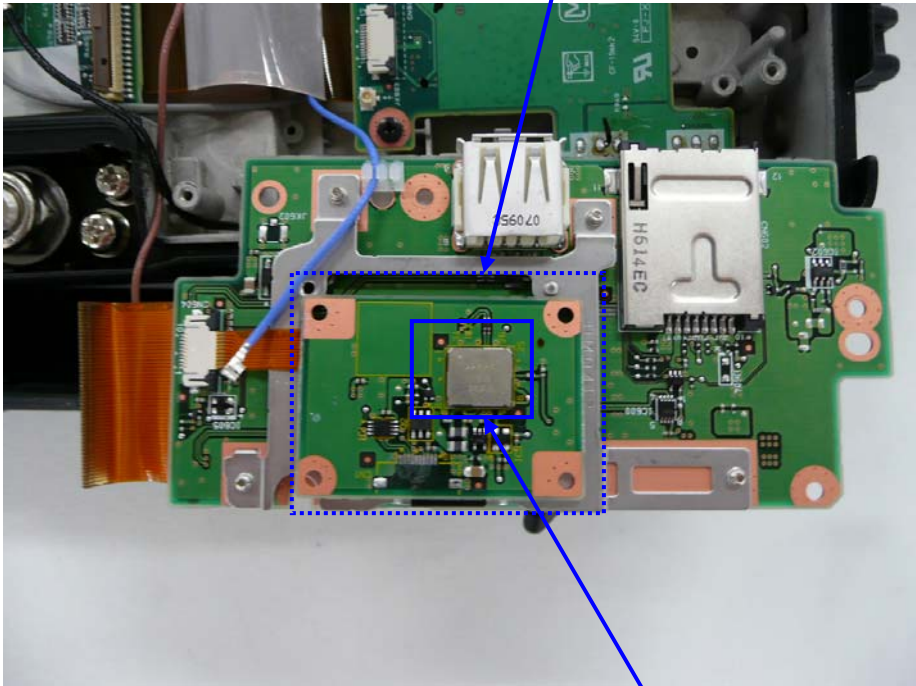
## 2. Module Position





Reverse Side

Reverse side of EVDO PWB



BlueTooth Module

### 3. Module Photo

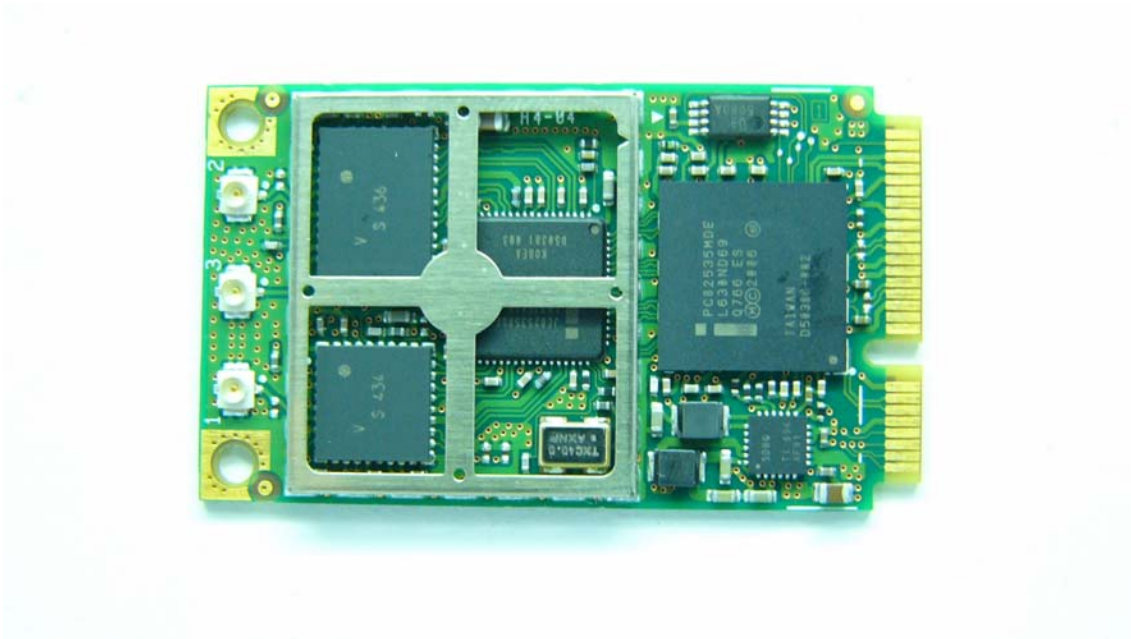
#### 1) WLAN



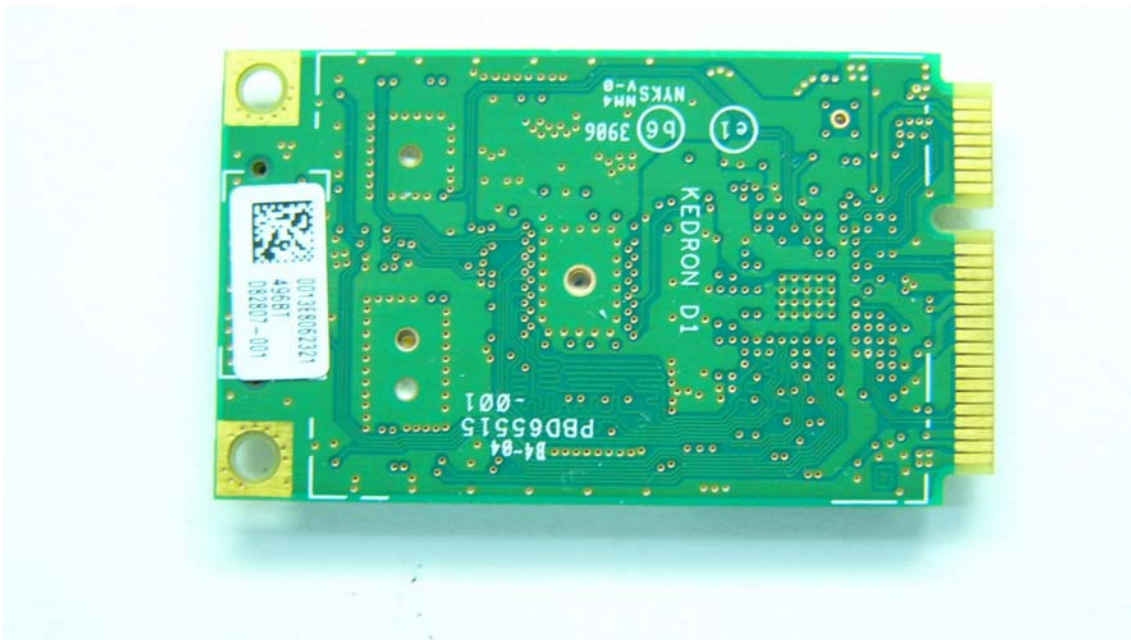
WLAN Exterior Top View



WLAN Exterior Bottom View

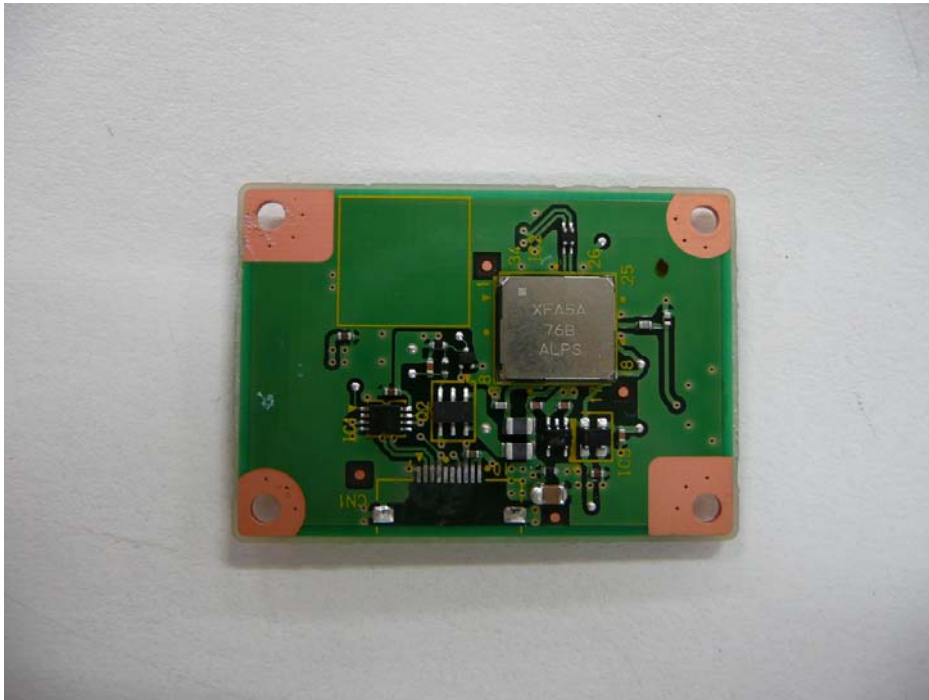


WLAN inside Top View

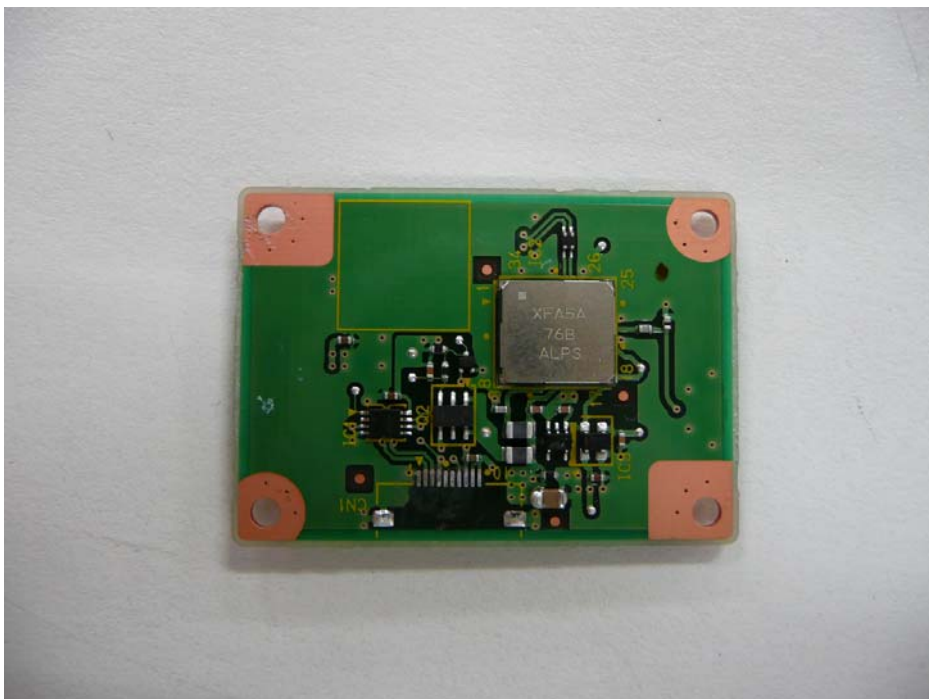


WLAN inside Bottom View

2) BlueTooth



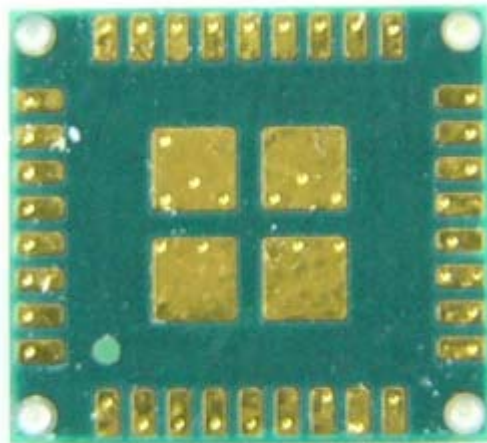
BlueTooth Card Top View



BlueTooth Card Bottom View



BlueTooth Module inside Top View



BlueTooth Module inside Bottom View

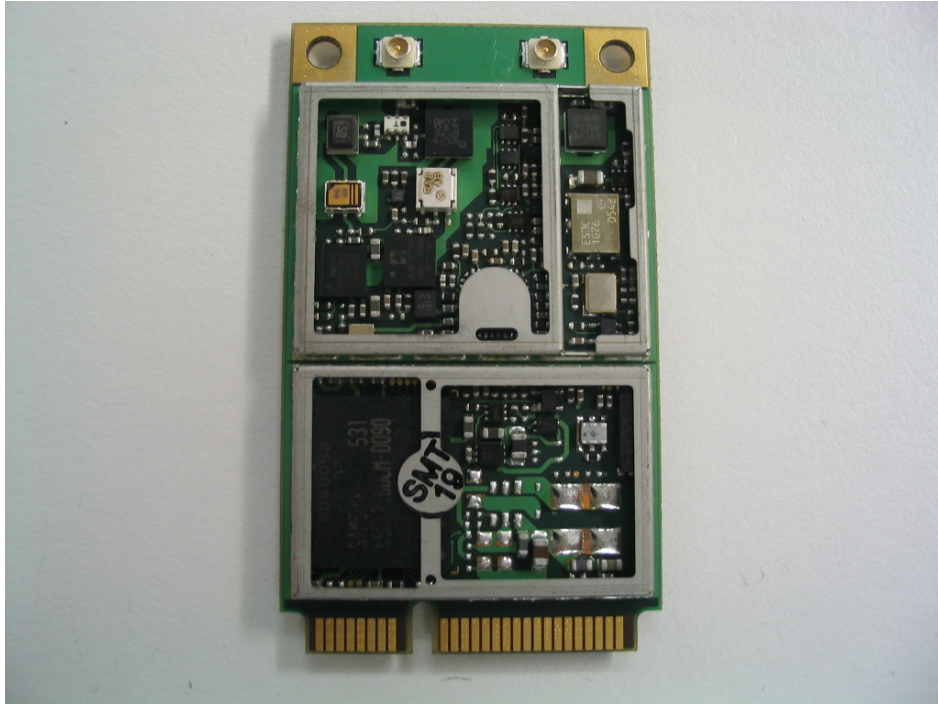
3) EVDO Rev.A Photo



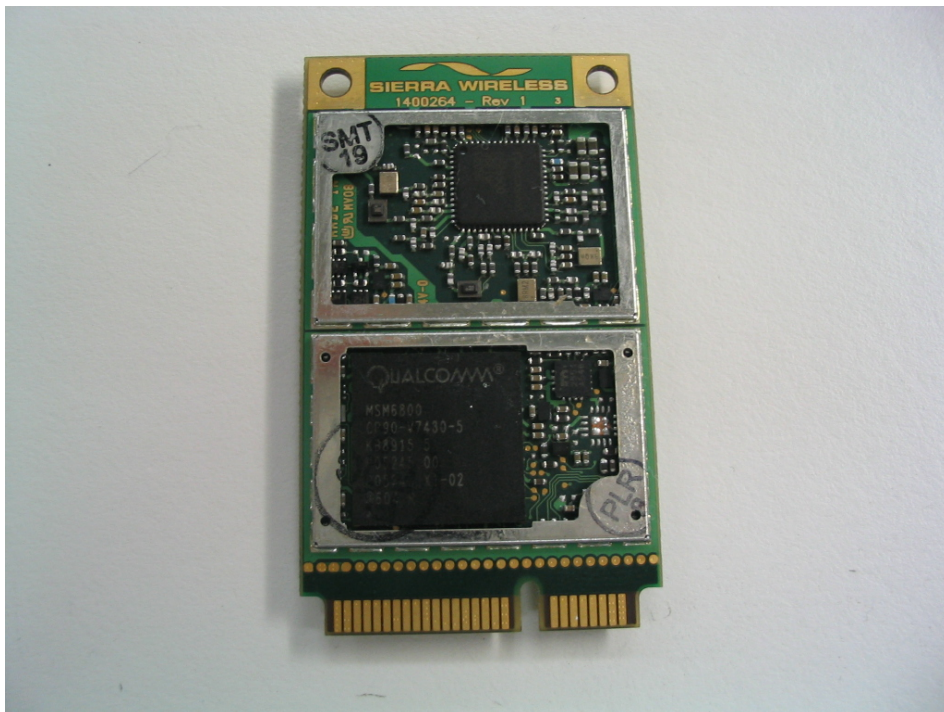
EVDO Top View



EVDO Bottom View



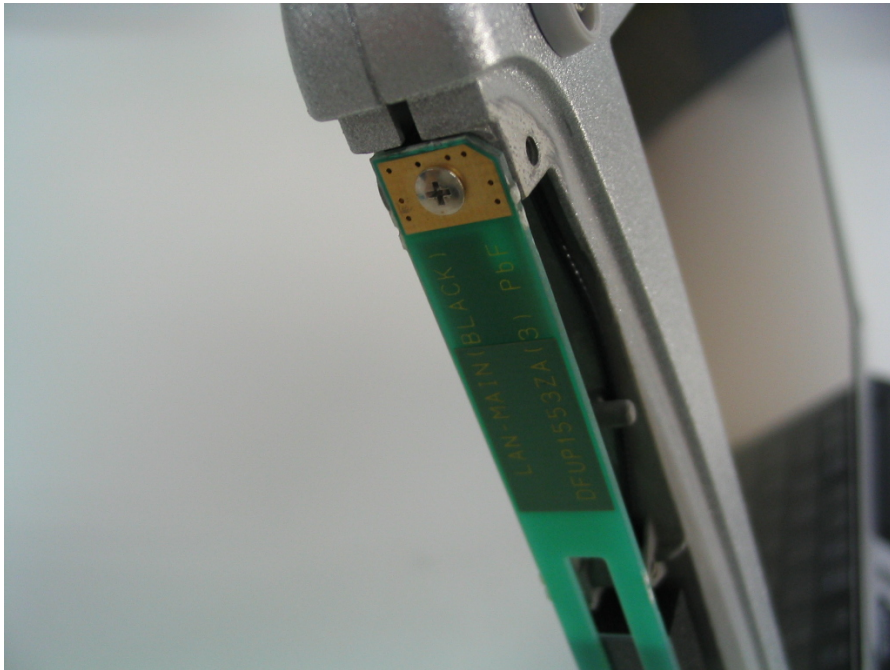
EVDO Inside Top View



EVDO Inside Bottom View

#### 4. Antenna Position

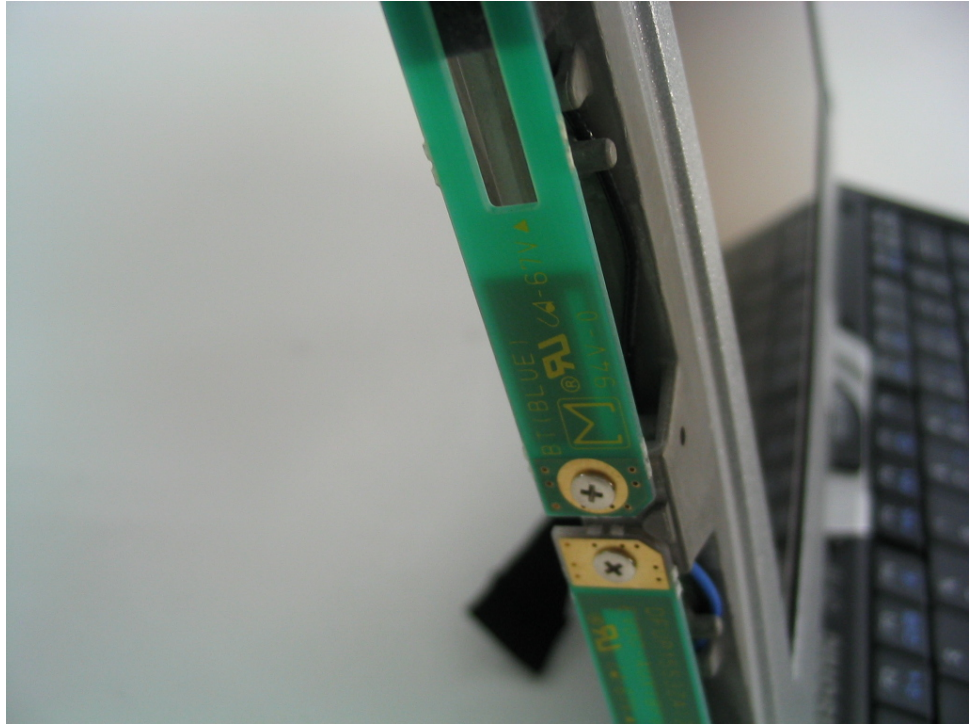




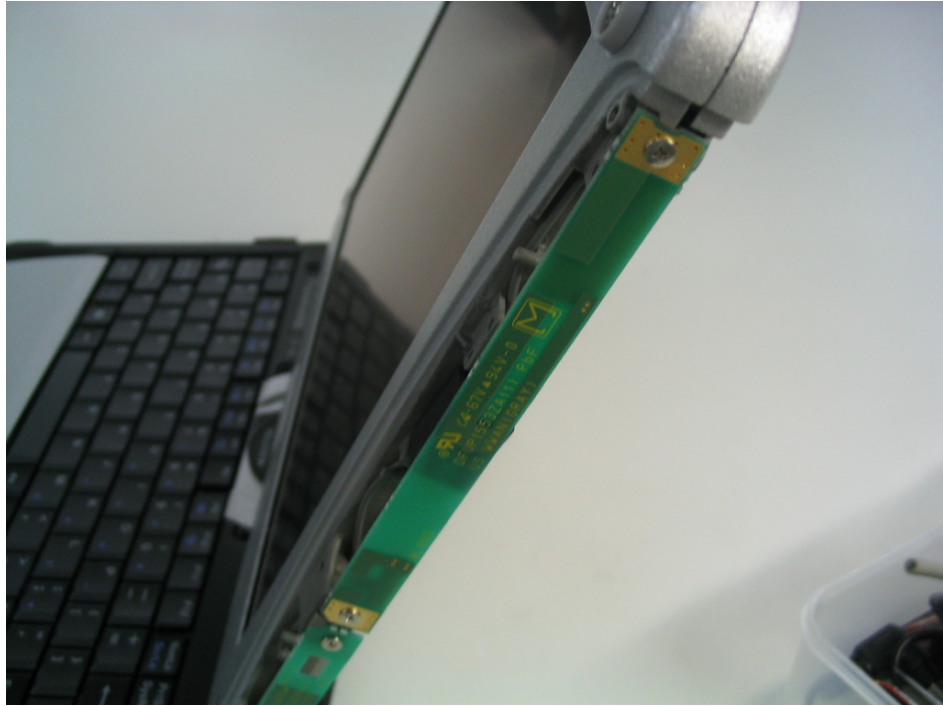
WLAN Main TX/RX Antenna



WLAN AUX TX/RX Antenna



BlueTooth TX/RX Antenna



EVDO Main TX/RX Antenna



EVDO AUX RX only Antenna

## 5) Antenna Specification

WLAN Main TX/RX Antenna: Pattern Antenna (Inverted F type: 2.48dBi max)

WLAN Aux TX/RX Antenna: Pattern Antenna (Inverted F type: 3.31dBi max)

Bluetooth TX/RX Antenna: Pattern Antenna (Inverted F type: 3.06dBi max)

EVDO Main TX/RX Antenna: Pattern Antenna (Inverted-F type: 1.84dBi max)

EVDO Aux RX only Antenna: Pattern Antenna (Inverted-F type)