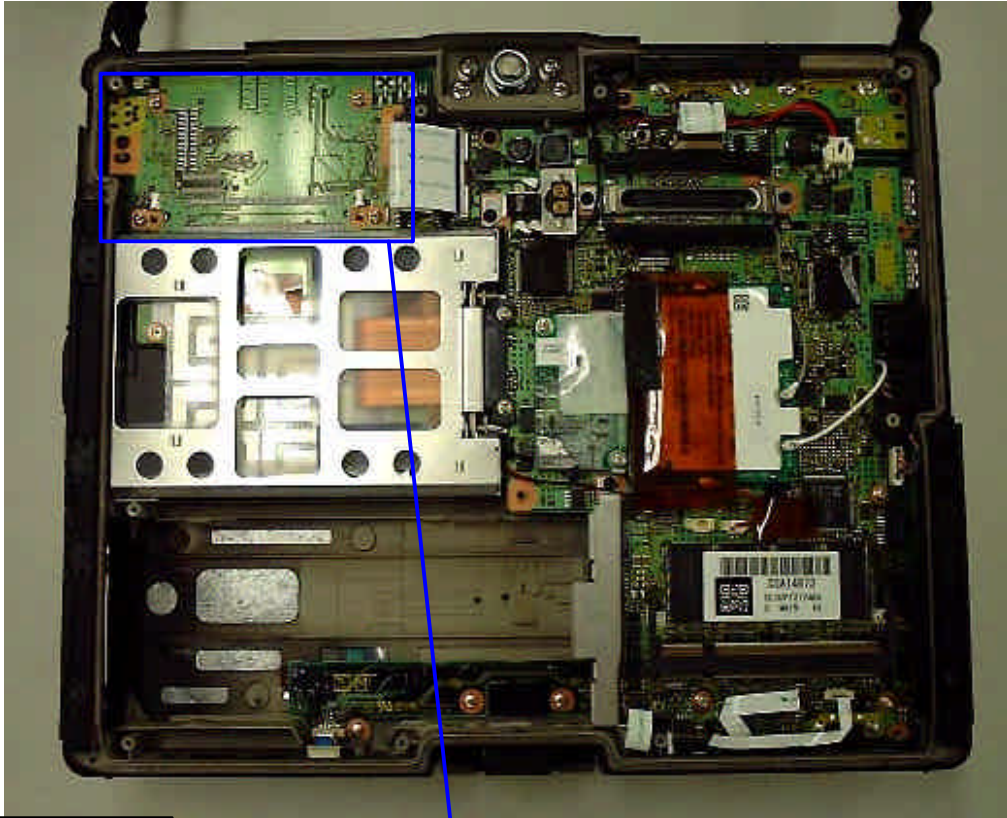
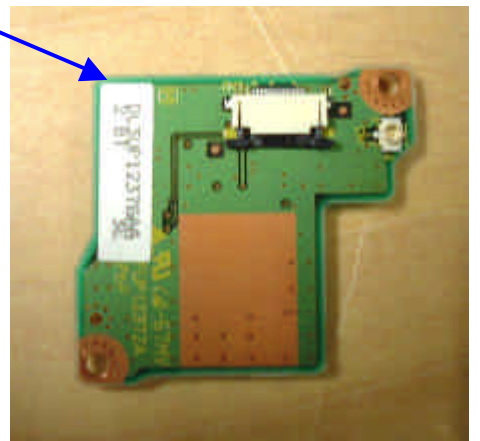
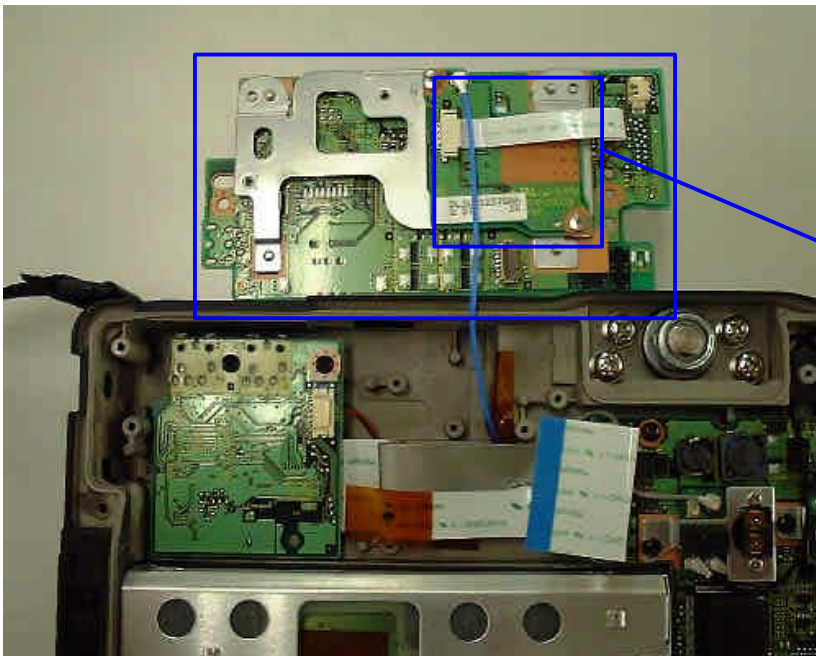


2) Bluetooth module position

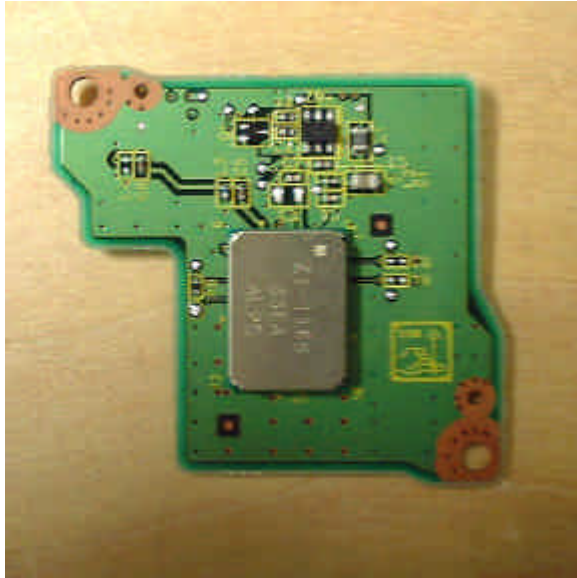


Upside down

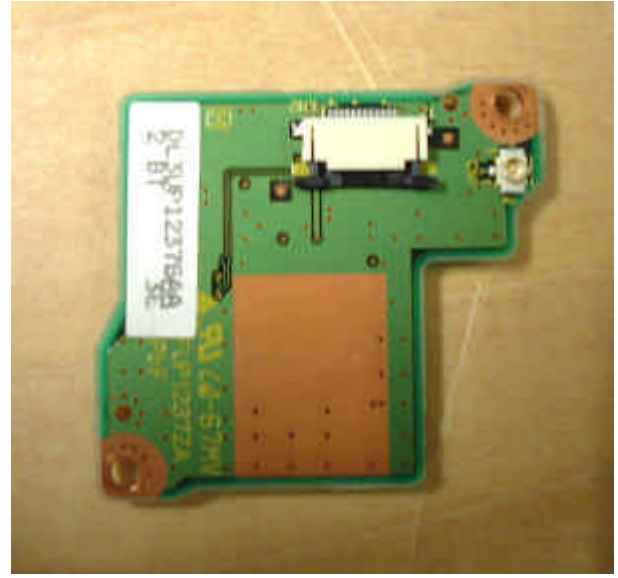


Bottom View of Bluetooth Module with Daughter Board

3) Bluetooth Module exterior photo



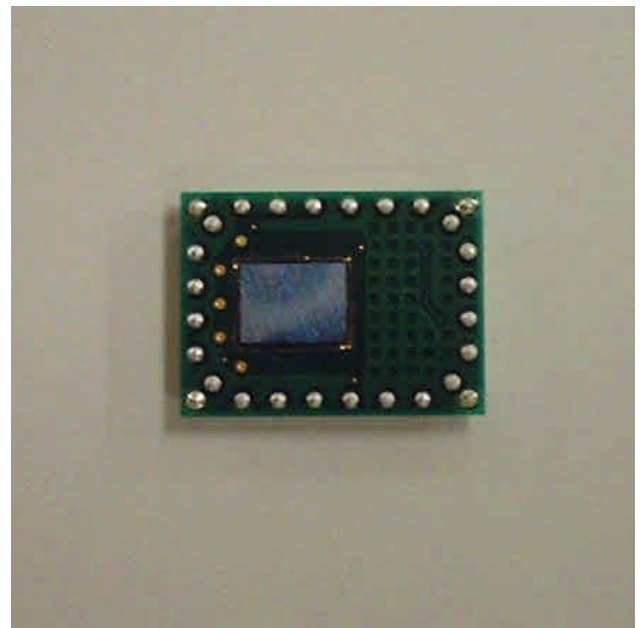
Top View of Bluetooth Module with Daughter-Board



Bottom View of Bluetooth module with Daughter-Board

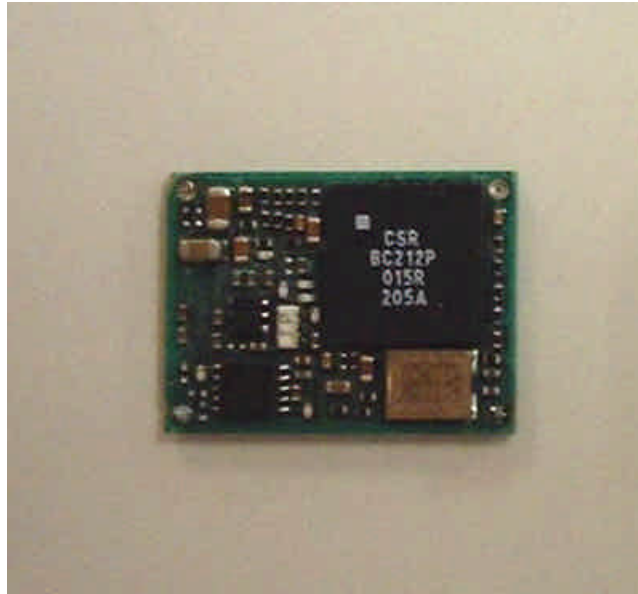


Top View of Bluetooth Module



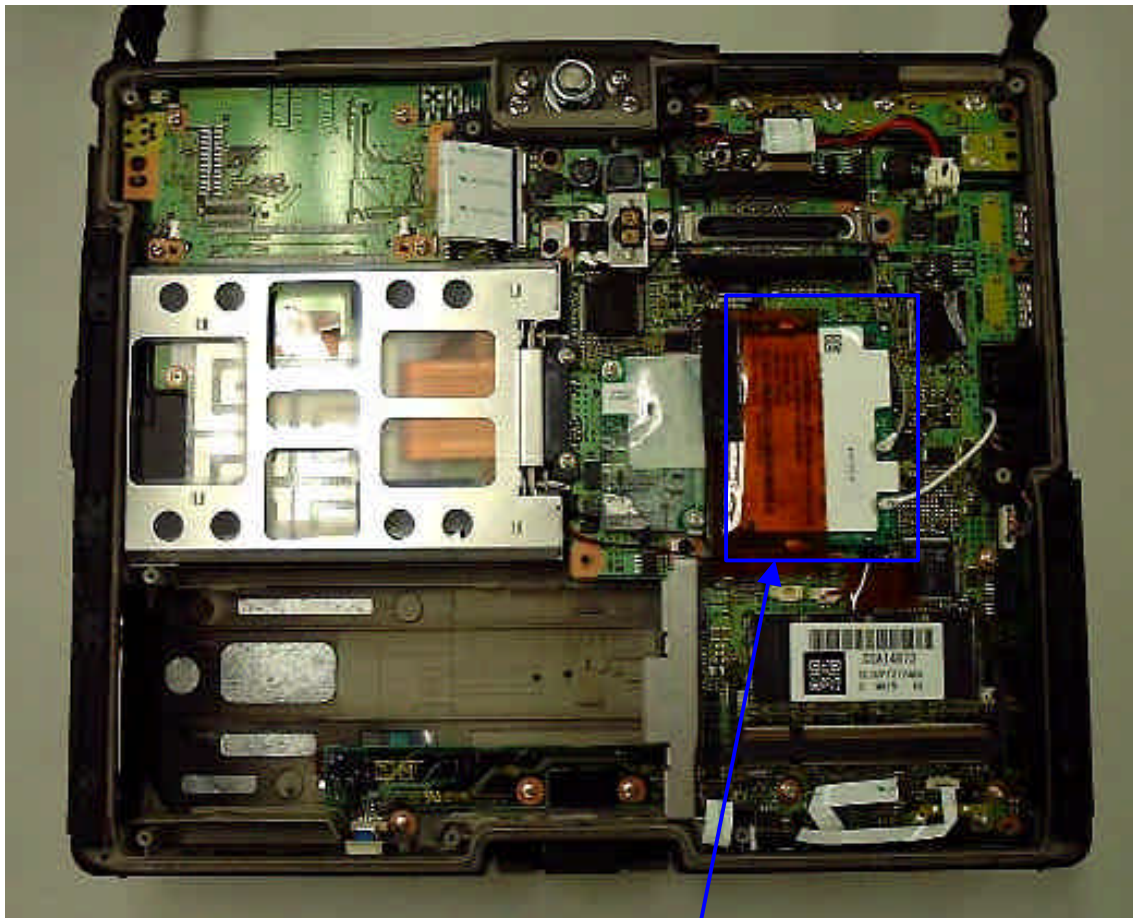
Bottom View of Bluetooth Module

4) Bluetooth Module Interior photo



Bluetooth Module without shield

5) WLAN Card position



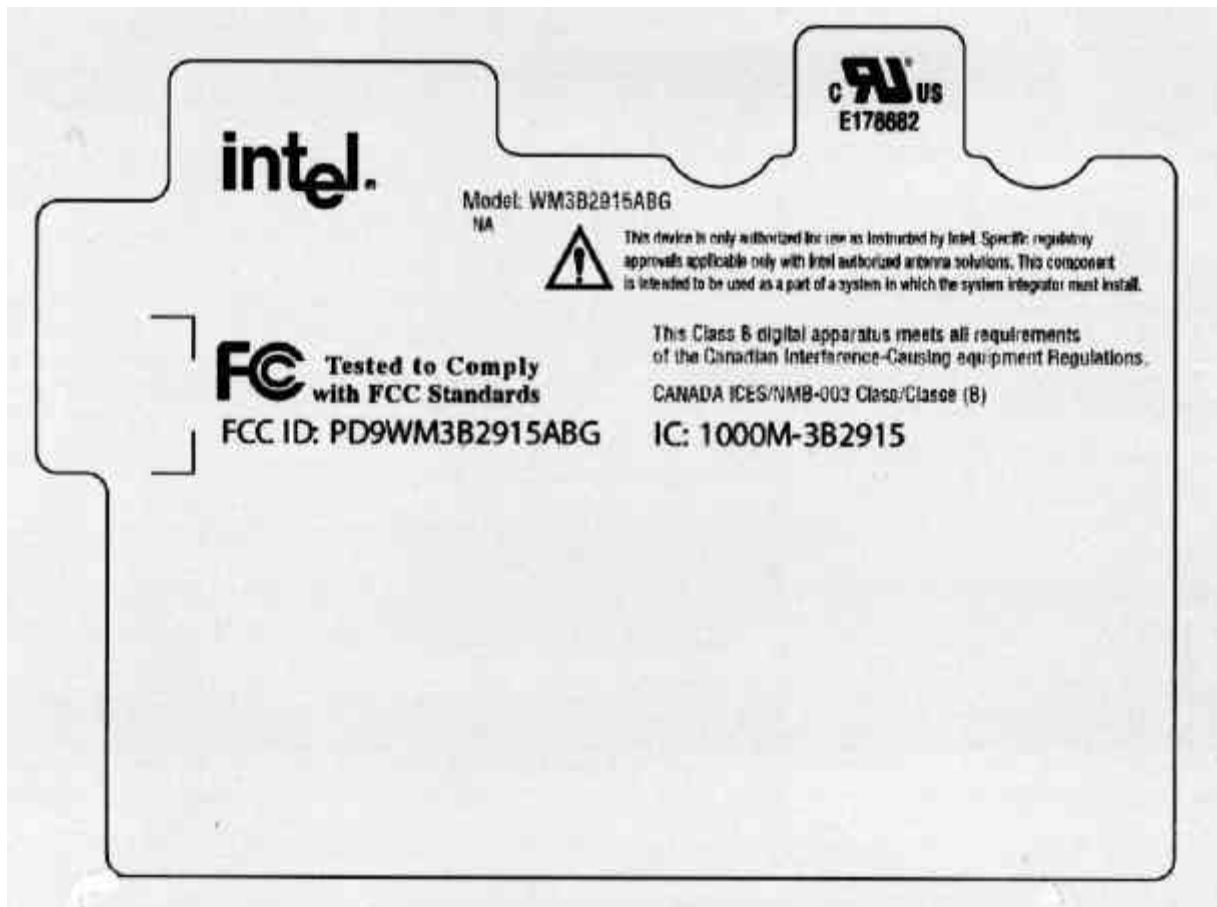
WLAN Card Position

6) WLAN exterior photo



WLAN Top View

\*The Rating Plate of above photo is not final. See hereinafter Rating Plate design.





WLAN Bottom View

7) WLAN interior photo

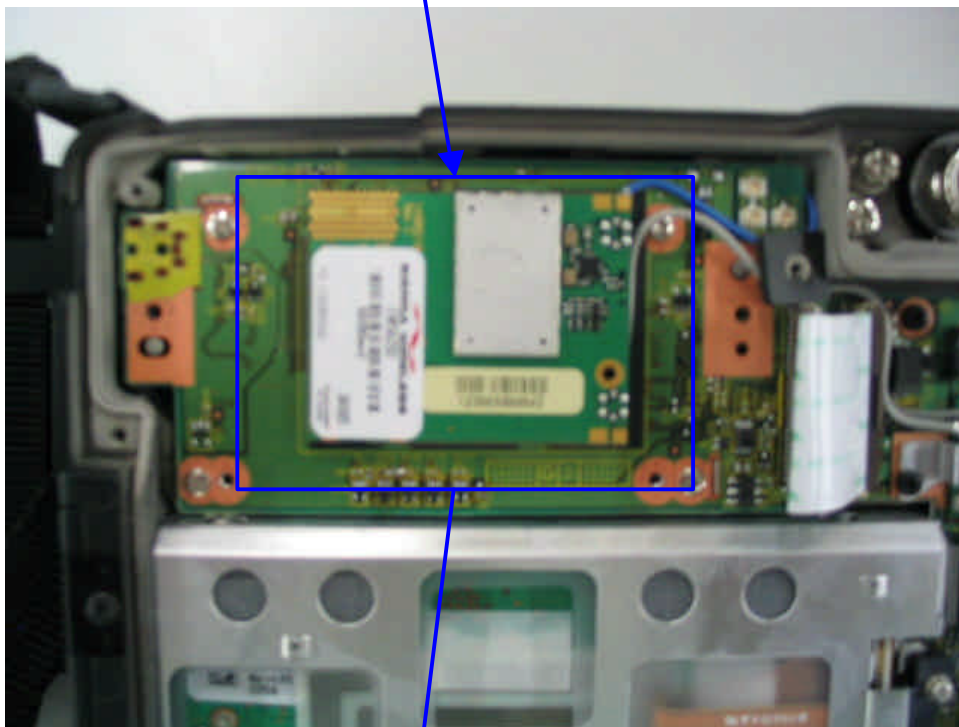


WLAN inside Top View



WLAN inside Bottom View

8) EVDO(EM5625) module position

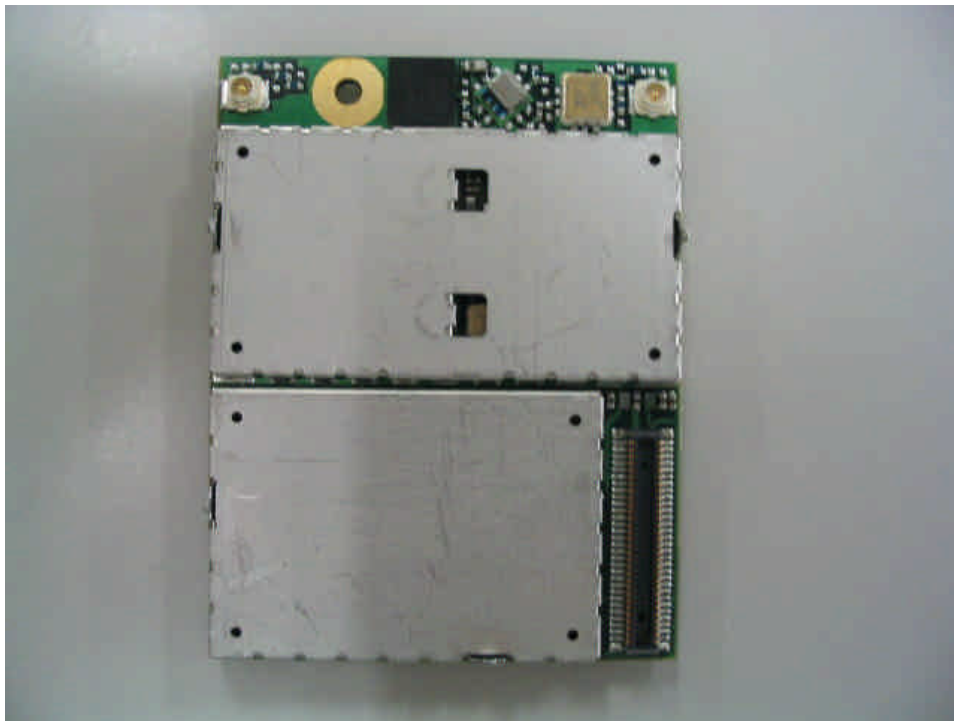


EVDO Module (EM5625)  
\*\* Non-shield metal

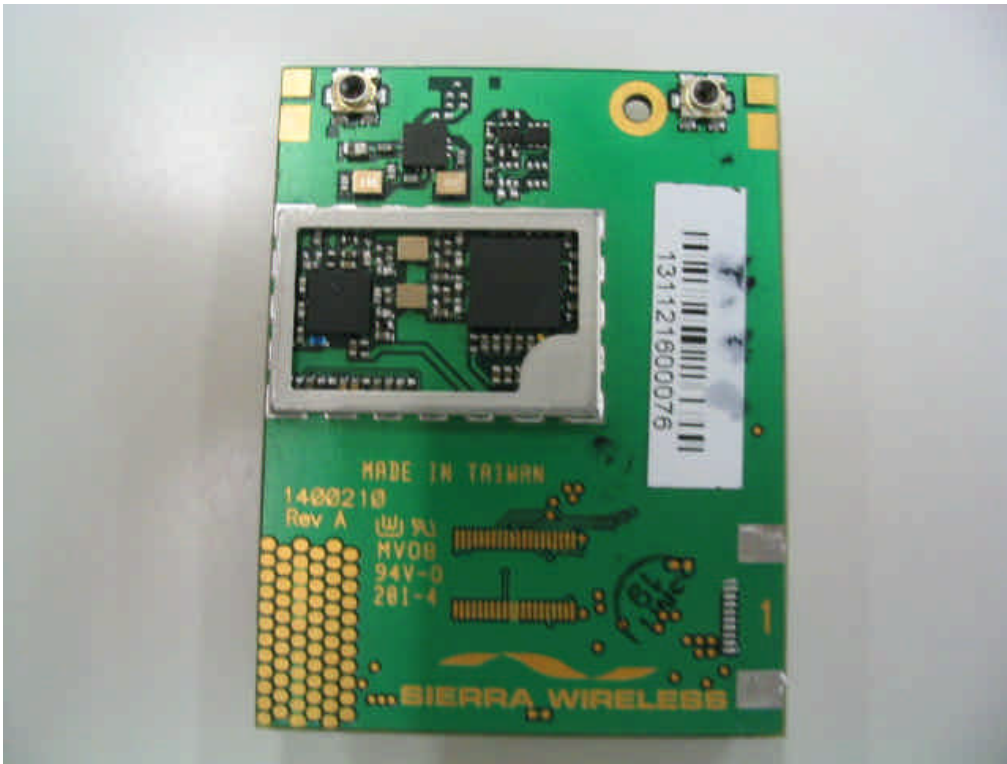
9) EVDO Module photo



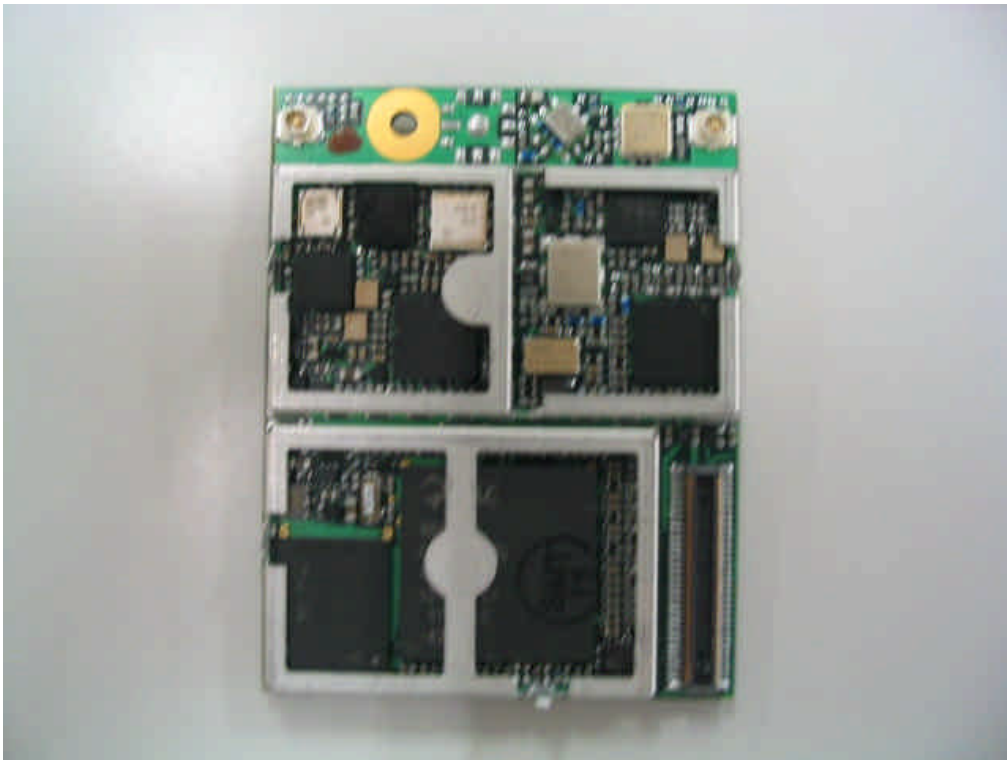
EM5625 Module Top View



EM5625 module Bottom View

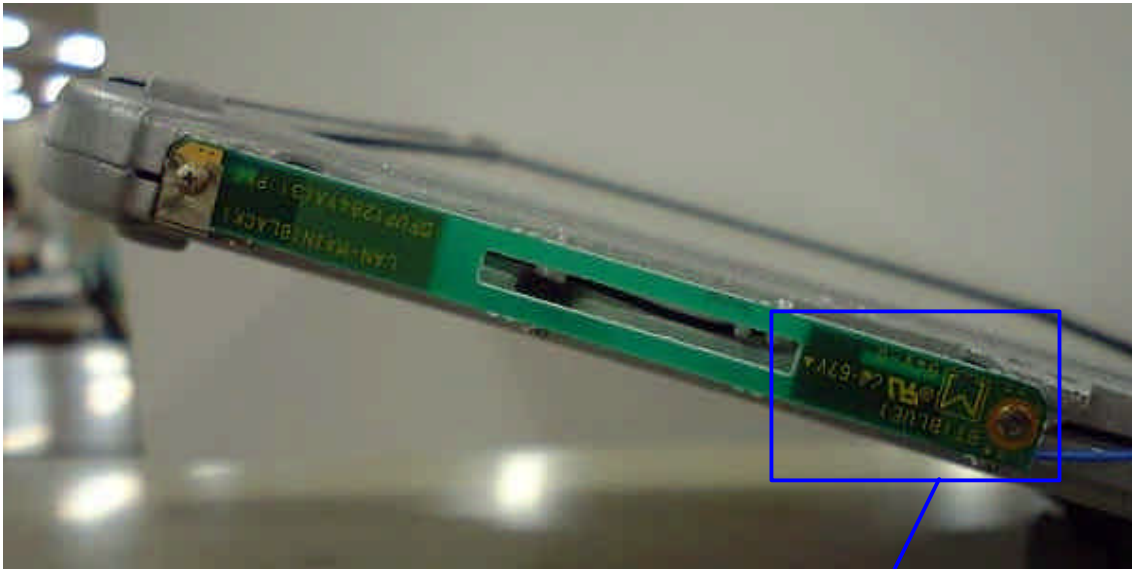


EM5625 Module Interior Top View

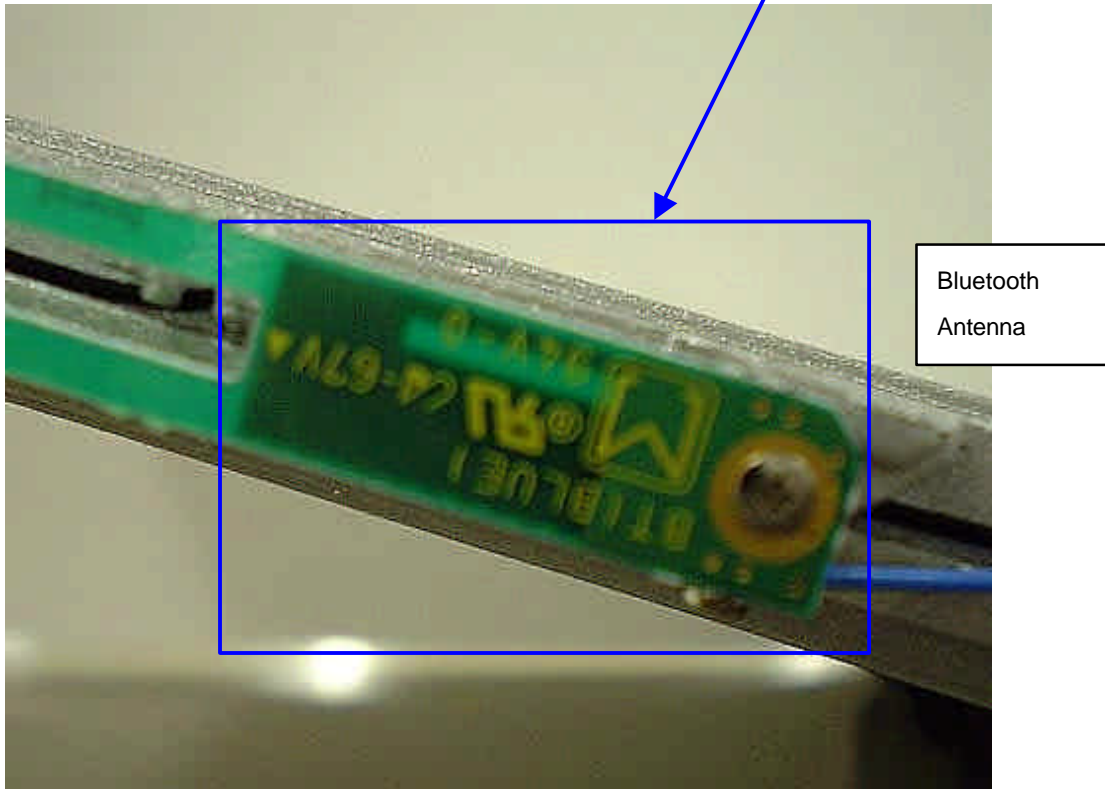


EM5625 Module Interior Bottom View

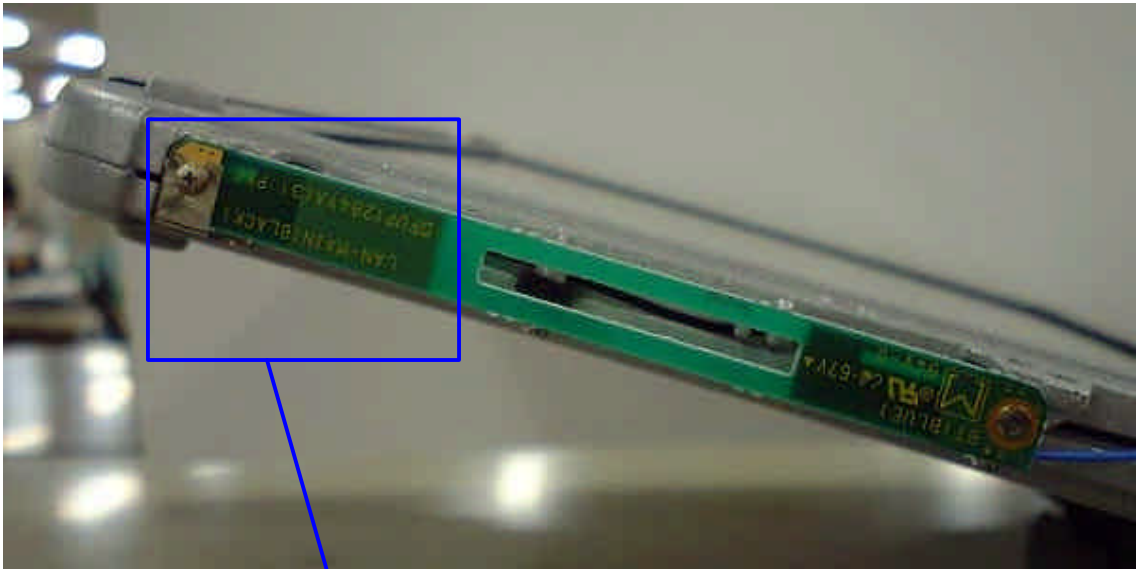
10) Antenna position



LCD left Side View

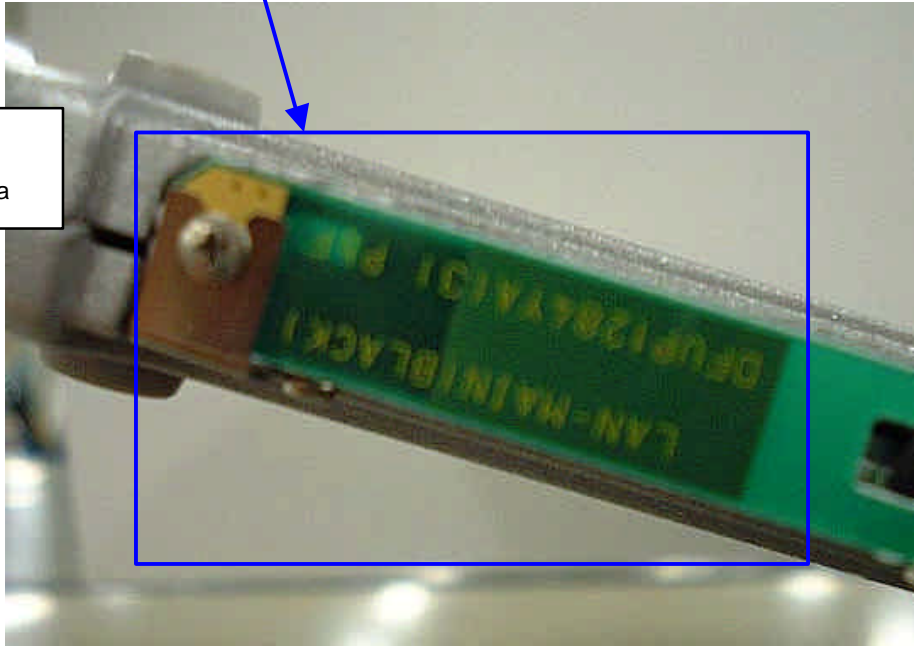


Bluetooth TX/RX Antenna

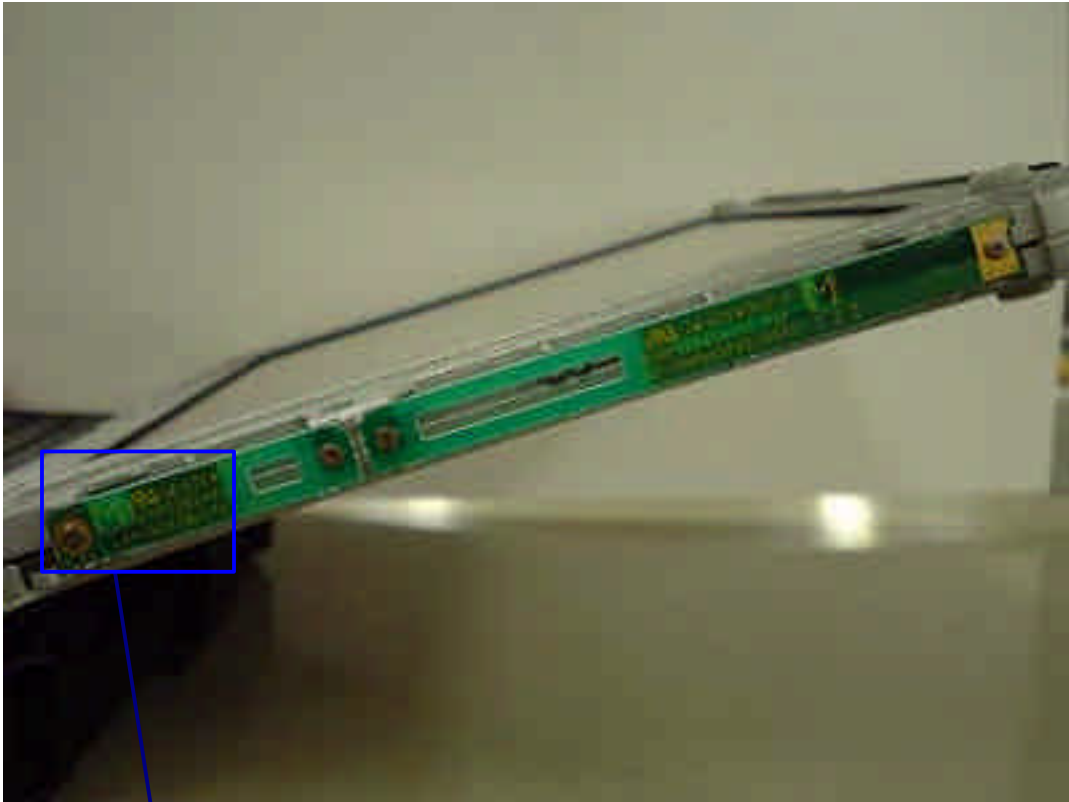


LCD Left Side View

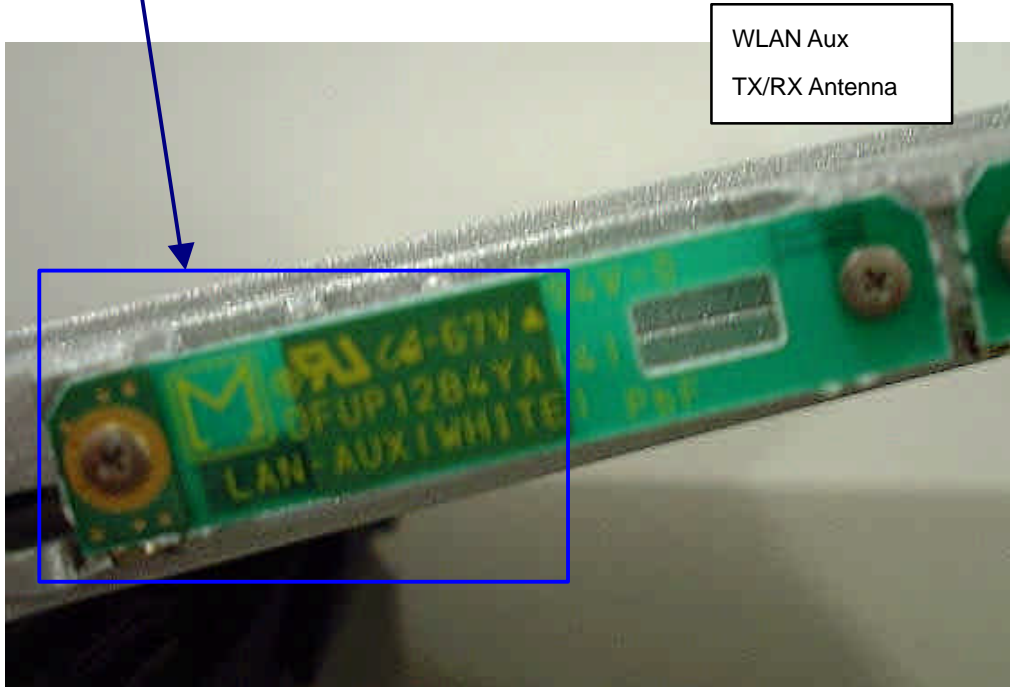
WLAN Main  
TX/RX Antenna



WLAN Main TX/RX Antenna



LCD Right Side View



WLAN Aux TX/RX Antenna



EVDO  
Antenna  
Position  
(Pattern  
Antenna)



Antenna cover open view



Antenna Magnified View

## 11) Antenna Specification

WLAN Main TX/RX Antenna: Pattern Antenna (Inverted F type: 1.42dBi max)

WLAN Aux TX/RX Antenna: Pattern Antenna (Inverted F type: 2.59dBi max)

Bluetooth Antenna: Pattern Antenna (Inverted F type: 3.36dBi max)

EVDO Antenna: Pattern Antenna (Inverted-F type: 2.15dBi max)

Note) WLAN Main/Aux Antenna is diversity Antenna.