

Model Number:KX-A405

Name:DECT6.0 Repeater

1) AC adaptor:PQLV219

- INPUT 120V/60Hz 100mA

- OUTPUT 6.5V/500mA

2) Base model:KX-TGA405

The base of KX-A405 is KX-TGA405.

Print circuit board, RF block, antenna and so on of KX-A405 are same as KX-TGA405.

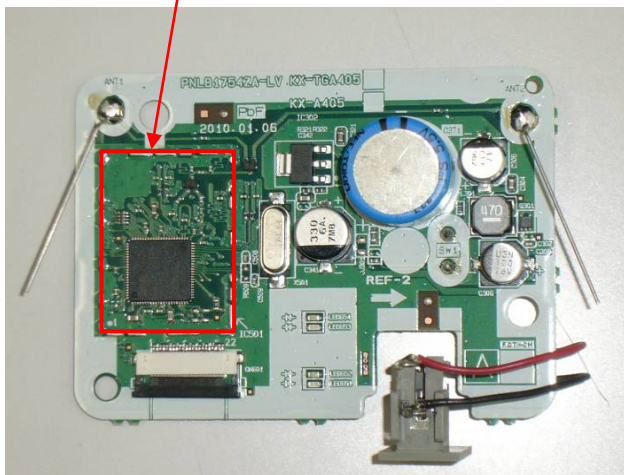
As for the difference between these models, refer to table 1, PCB photo and attached schematic diagram.

Tabel 1. Difference between KX-A405 and KX-TGA405

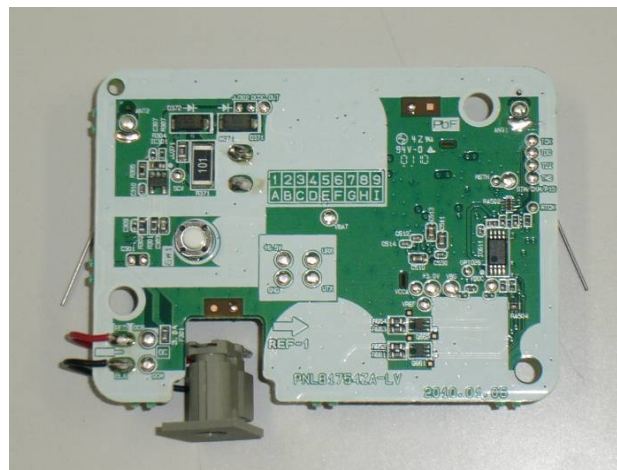
Item	KX-TGA405(basemodel)	KX-A405(EUT)
DC/DC converter circuit	No	Yes
Double layer capacitor(C371)	No	Yes
Connector(CN601)	No	Yes
BBIC(IC501)	Mask version	Flash version

PCB photo of KX-A405 and KX-TGA405

RF Block
(same as KX-TGA405)



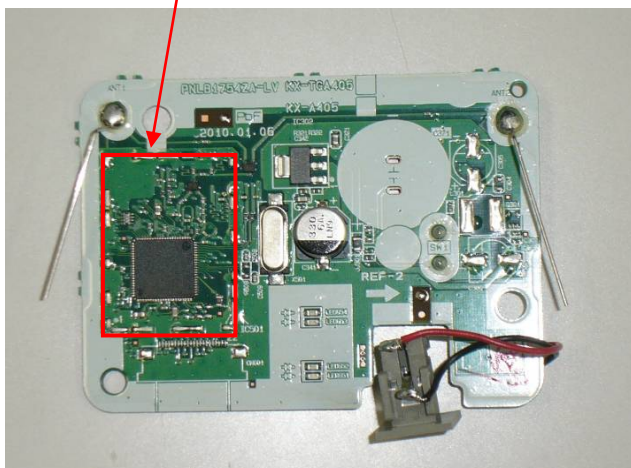
(1) Front side



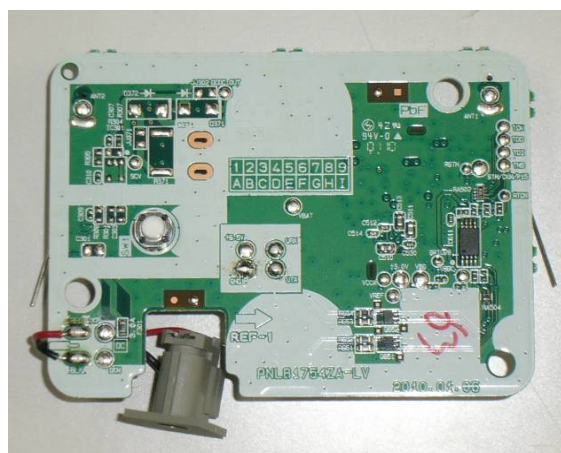
(2) Back side

Fig. 1 PCB photo of KX-A405

RF Block



(1) Front side



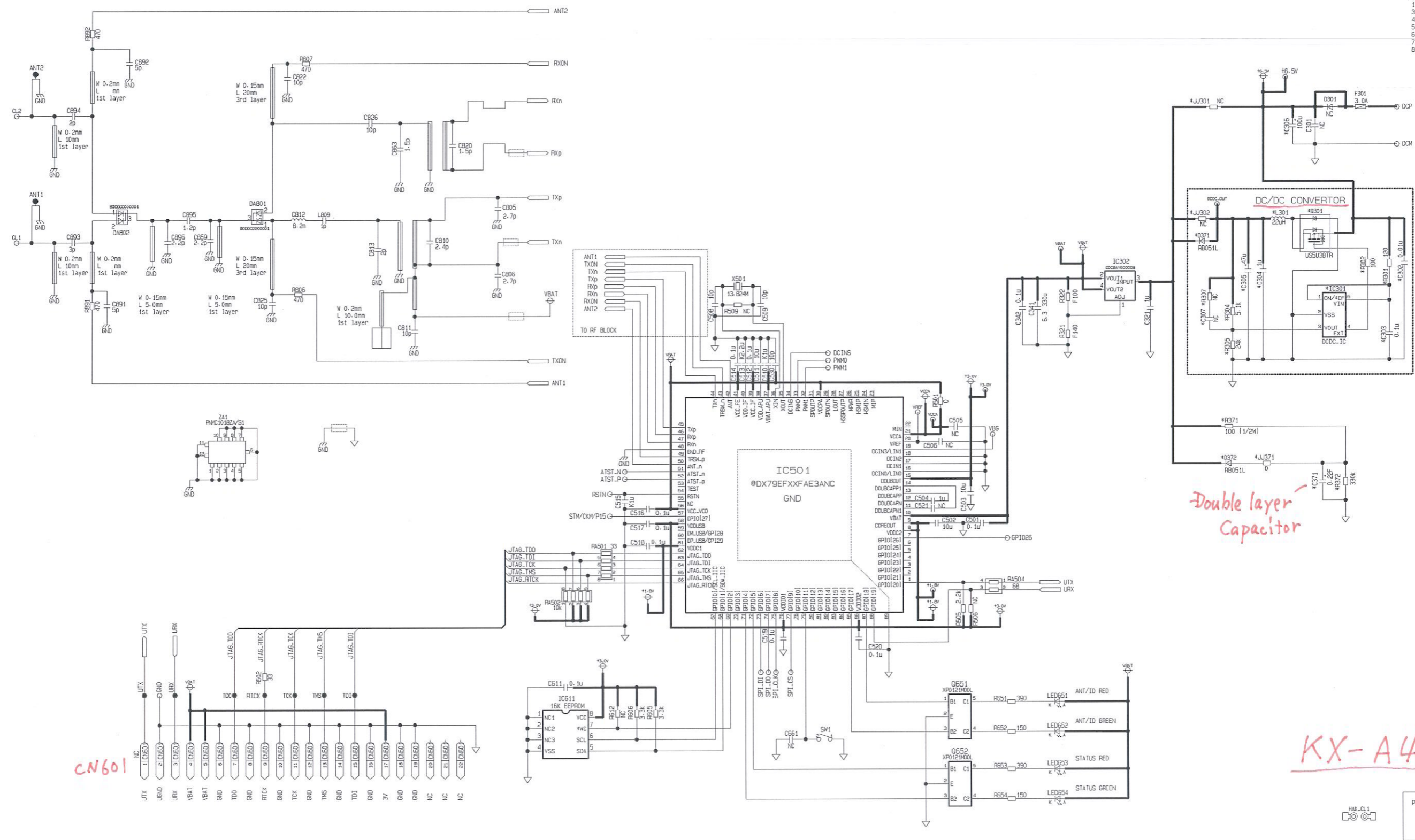
(2) Back side

Fig. 1 PCB photo of KX-TGA405

PCC Confidential Information
Dissemination, disclosure, or use of this information is not permitted
without the written permission of Panasonic Communications Co., Ltd.

Sym.	Date	Revision	Signed	Checked
①	@DATE	@comm		
②	@DATE	@comm		
③	@DATE	@comm		

REFERENCE
1XX : TEL. LINE
3XX : POWER-CHARGE
4XX : MIC. GP
5XX : BBIC
6XX : FLASH+EEPROM+KEY+LCD
7XX : FOR DK
8XX : RF



CN601

Double layer
Capacitor

KX-A405

PNL1754ZA-LV
PCB
REV.1

Mode1	TGA405RZA	
Name	KX-TGA405_PBX	
Designed	Drawn	Checked
N. Satoh	N. Satoh	@NAME
2009.06.08	2009.06.08	2009.11.xx
Rev. Code	Rev. Code	No. Sheet
1	1	001

