

The Testcenter facility 'Dosimetric Test Lab' within IMST GmbH is accredited by the German National 'Deutsche Akkreditierungsstelle GmbH (DAkkS)' for testing according to the scope as listed in the accreditation certificate: D-PL-12139-01-01.

---

## **Appendix for the Report**

# **Dosimetric Assessment of the Portable Device KX-UDT111 (FCC ID: ACJ96NKX-UDT111) (IC: 216A-KXUDT111)**

## **According to the FCC Requirements SAR Distribution Plots**

April 19, 2012

**IMST GmbH**

Carl-Friedrich-Gauß-Str. 2  
D-47475 Kamp-Lintfort

**Customer**

Panasonic System Networks Co., Ltd.  
1 - 62, 4 - chome Minoshima, Hakata,  
Fukuoka 812-8531  
Japan

The test results only relate to the items tested. This report shall not be reproduced except in full without the written approval of the testing laboratory.

**Table of Contents**

1 SAR DISTRIBUTION PLOTS, HEAD MEASUREMENT ..... 3

2 SAR DISTRIBUTION PLOTS, BODY MEASUREMENTS ..... 11

3 SAR Z-AXIS SCANS (VALIDATION) ..... 15

4 SAR Z-AXIS SCANS (MEASUREMENTS)..... 16

## 1 SAR Distribution Plots, Head Measurement

Test Laboratory: Imst GmbH, DASY Yellow (II); File Name: [UDT111\\_yplm\\_1\\_ant1.da4](#)

DUT: Panasonic; Type: KX-UDT111;

Program Name: DECT

Communication System: DECT US; Frequency: 1924.99 MHz; Duty Cycle: 1:24

Medium parameters used:  $f = 1924.99$  MHz;  $\sigma = 1.46$  mho/m;  $\epsilon_r = 39.5$ ;  $\rho = 1000$  kg/m<sup>3</sup>

Phantom section: Left Section

DASY4 Configuration:

- Probe: EX3DV4 - SN3536; ConvF(8.07, 8.07, 8.07); Calibrated: 26.09.2011

- Sensor-Surface: 4mm (Mechanical Surface Detection)

- Electronics: DAE4 Sn631; Calibrated: 21.09.2011

- Phantom: SAM Glycol 1340; Type: QD 000 P40 CB; Serial: TP-1340

- Measurement SW: DASY4, V4.7 Build 80; Postprocessing SW: SEMCAD, V1.8 Build 186

**Cheek Left/Area Scan (7x13x1):** Measurement grid: dx=15mm, dy=15mm

Maximum value of SAR (measured) = 0.029 mW/g

**Cheek Left/Zoom Scan (7x7x7)/Cube 0:** Measurement grid: dx=5mm, dy=5mm, dz=5mm

Reference Value = 3.25 V/m; Power Drift = -0.104 dB

Peak SAR (extrapolated) = 0.046 W/kg

**SAR(1 g) = 0.027 mW/g; SAR(10 g) = 0.016 mW/g**

Maximum value of SAR (measured) = 0.030 mW/g

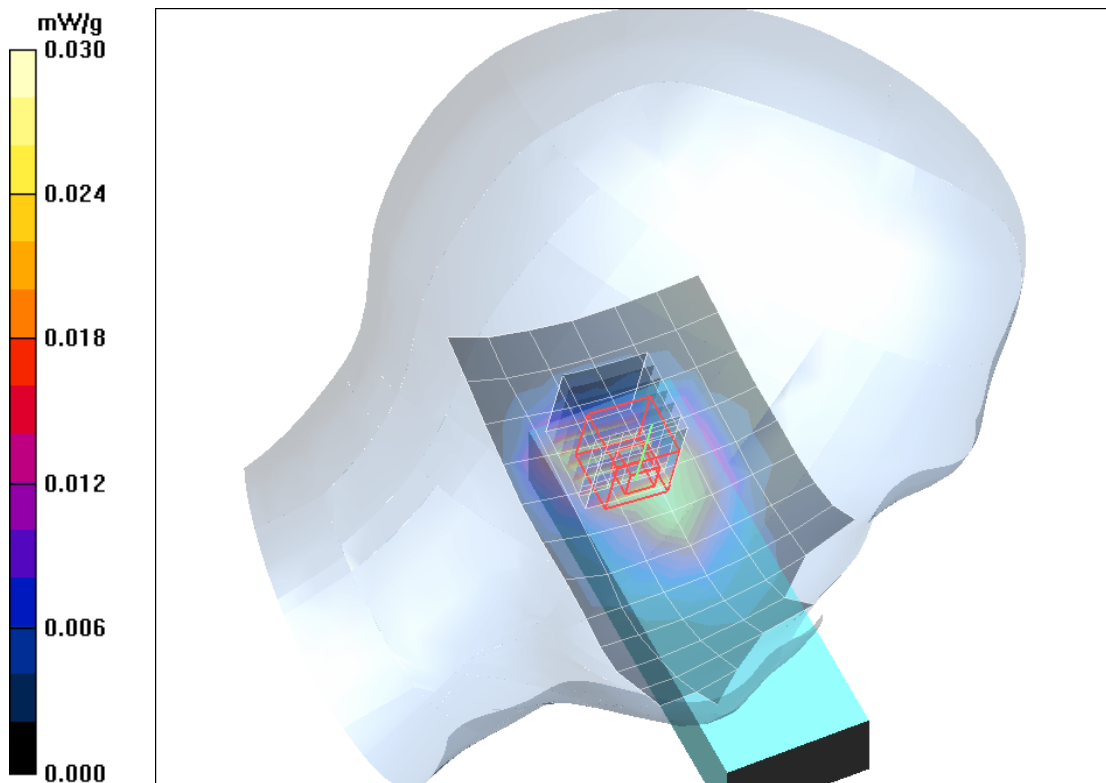


Fig. 1: SAR distribution for DECT US, channel 2, cheek position, left side of head, Antenna 1 (April 03, 2012; Ambient Temperature: 21.6°C; Liquid Temperature: 21.3°C).

**Test Laboratory:** Imst GmbH, DASY Yellow (II); **File Name:** [UDT111\\_yplm\\_2\\_ant1.da4](#)

**DUT:** Panasonic; **Type:** KX-UDT111;

**Program Name:** DECT

Communication System: DECT US; Frequency: 1924.99 MHz; Duty Cycle: 1:24

Medium parameters used:  $f = 1924.99$  MHz;  $\sigma = 1.46$  mho/m;  $\epsilon_r = 39.5$ ;  $\rho = 1000$  kg/m<sup>3</sup>

Phantom section: Left Section

DASY4 Configuration:

- Probe: EX3DV4 - SN3536; ConvF(8.07, 8.07, 8.07); Calibrated: 26.09.2011
- Sensor-Surface: 4mm (Mechanical Surface Detection)
- Electronics: DAE4 Sn631; Calibrated: 21.09.2011
- Phantom: SAM Glycol 1340; Type: QD 000 P40 CB; Serial: TP-1340
- Measurement SW: DASY4, V4.7 Build 80; Postprocessing SW: SEMCAD, V1.8 Build 186

**Tilted Left/Area Scan (7x13x1):** Measurement grid: dx=15mm, dy=15mm

Maximum value of SAR (measured) = 0.020 mW/g

**Tilted Left/Zoom Scan (7x7x7)/Cube 0:** Measurement grid: dx=5mm, dy=5mm, dz=5mm

Reference Value = 3.15 V/m; Power Drift = -0.128 dB

Peak SAR (extrapolated) = 0.036 W/kg

**SAR(1 g) = 0.020 mW/g; SAR(10 g) = 0.011 mW/g**

Maximum value of SAR (measured) = 0.021 mW/g

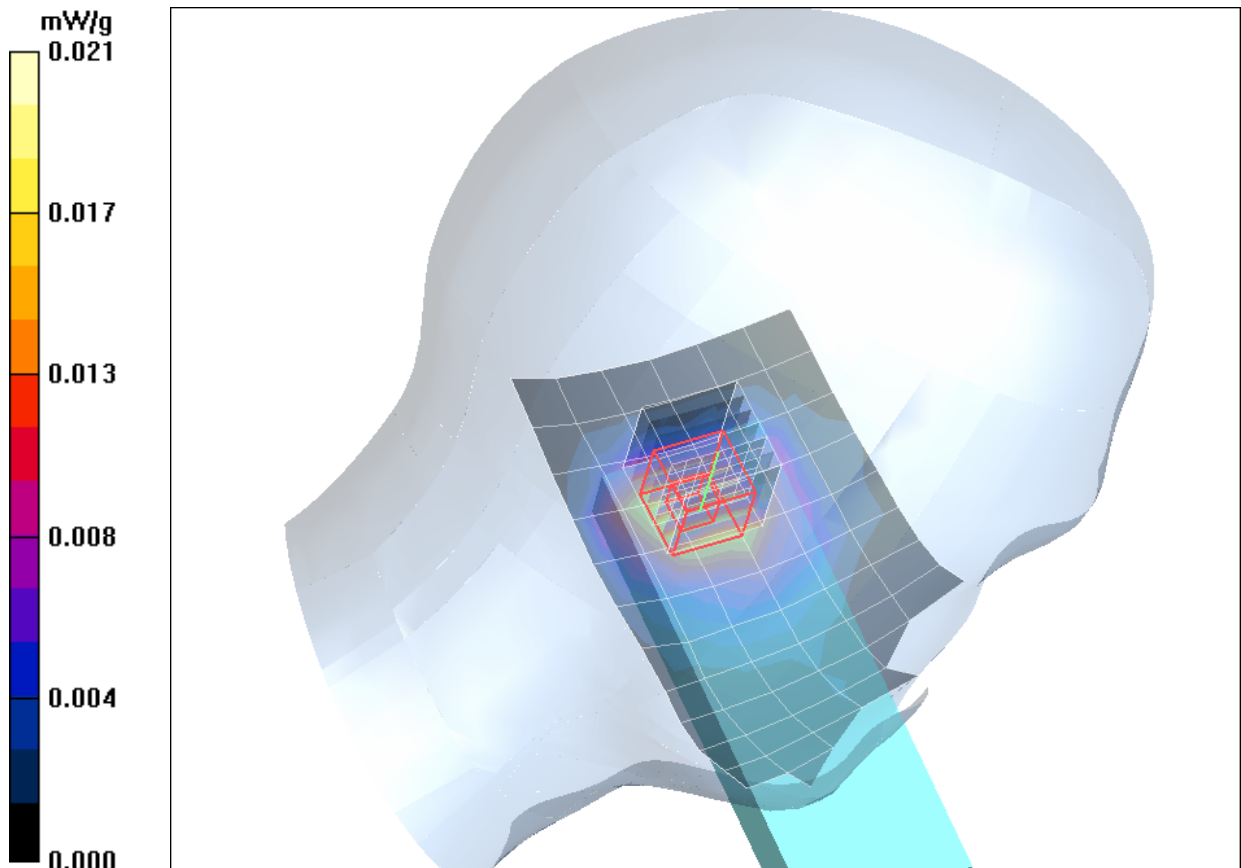


Fig. 2: SAR distribution for DECT US, channel 2, tilted position, left side of head, Antenna 1 (April 03, 2012; Ambient Temperature: 21.6°C; Liquid Temperature: 21.3°C).

Test Laboratory: Imst GmbH, DASY Yellow (II); File Name: [UDT111\\_yprm\\_1\\_ant1.da4](#)

DUT: Panasonic; Type: KX-UDT111;

Program Name: DECT

Communication System: DECT US; Frequency: 1924.99 MHz; Duty Cycle: 1:24

Medium parameters used:  $f = 1924.99$  MHz;  $\sigma = 1.46$  mho/m;  $\epsilon_r = 39.5$ ;  $\rho = 1000$  kg/m<sup>3</sup>

Phantom section: Right Section

DASY4 Configuration:

- Probe: EX3DV4 - SN3536; ConvF(8.07, 8.07, 8.07); Calibrated: 26.09.2011

- Sensor-Surface: 4mm (Mechanical Surface Detection)

- Electronics: DAE4 Sn631; Calibrated: 21.09.2011

- Phantom: SAM Glycol 1340; Type: QD 000 P40 CB; Serial: TP-1340

- Measurement SW: DASY4, V4.7 Build 80; Postprocessing SW: SEMCAD, V1.8 Build 186

**Cheek Right/Area Scan (7x13x1):** Measurement grid: dx=15mm, dy=15mm

Maximum value of SAR (measured) = 0.036 mW/g

**Cheek Right/Zoom Scan (7x7x7)/Cube 0:** Measurement grid: dx=5mm, dy=5mm, dz=5mm

Reference Value = 3.46 V/m; Power Drift = -0.124 dB

Peak SAR (extrapolated) = 0.065 W/kg

**SAR(1 g) = 0.033 mW/g; SAR(10 g) = 0.016 mW/g**

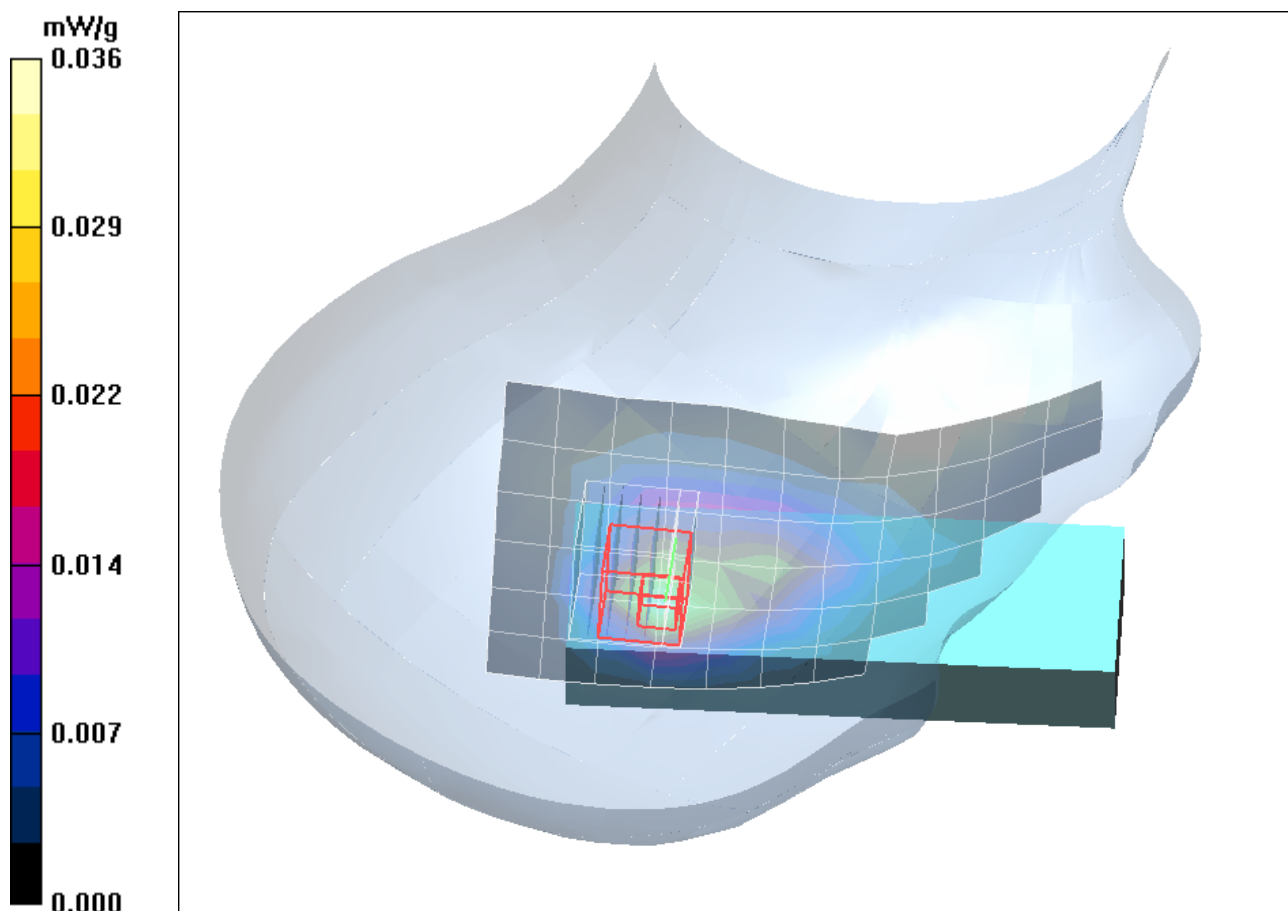


Fig. 3: SAR distribution for DECT US, channel 2, cheek position, right side of head, Antenna 1 (April 03, 2012; Ambient Temperature: 21.6°C; Liquid Temperature: 21.3°C).

**Test Laboratory:** Imst GmbH, DASY Yellow (II); **File Name:** [UDT111\\_yprm\\_2\\_ant1.da4](#)

**DUT:** Panasonic; **Type:** KX-UDT111;

**Program Name:** DECT

Communication System: DECT US; Frequency: 1924.99 MHz; Duty Cycle: 1:24

Medium parameters used:  $f = 1924.99$  MHz;  $\sigma = 1.46$  mho/m;  $\epsilon_r = 39.5$ ;  $\rho = 1000$  kg/m<sup>3</sup>

Phantom section: Right Section

DASY4 Configuration:

- Probe: EX3DV4 - SN3536; ConvF(8.07, 8.07, 8.07); Calibrated: 26.09.2011

- Sensor-Surface: 4mm (Mechanical Surface Detection)

- Electronics: DAE4 Sn631; Calibrated: 21.09.2011

- Phantom: SAM Glycol 1340; Type: QD 000 P40 CB; Serial: TP-1340

- Measurement SW: DASY4, V4.7 Build 80; Postprocessing SW: SEMCAD, V1.8 Build 186

**Tilted Right/Area Scan (7x13x1):** Measurement grid: dx=15mm, dy=15mm

Maximum value of SAR (measured) = 0.024 mW/g

**Tilted Right/Zoom Scan (7x7x7)/Cube 0:** Measurement grid: dx=5mm, dy=5mm, dz=5mm

Reference Value = 3.21 V/m; Power Drift = 0.017 dB

Peak SAR (extrapolated) = 0.038 W/kg

**SAR(1 g) = 0.021 mW/g; SAR(10 g) = 0.011 mW/g**

Maximum value of SAR (measured) = 0.023 mW/g

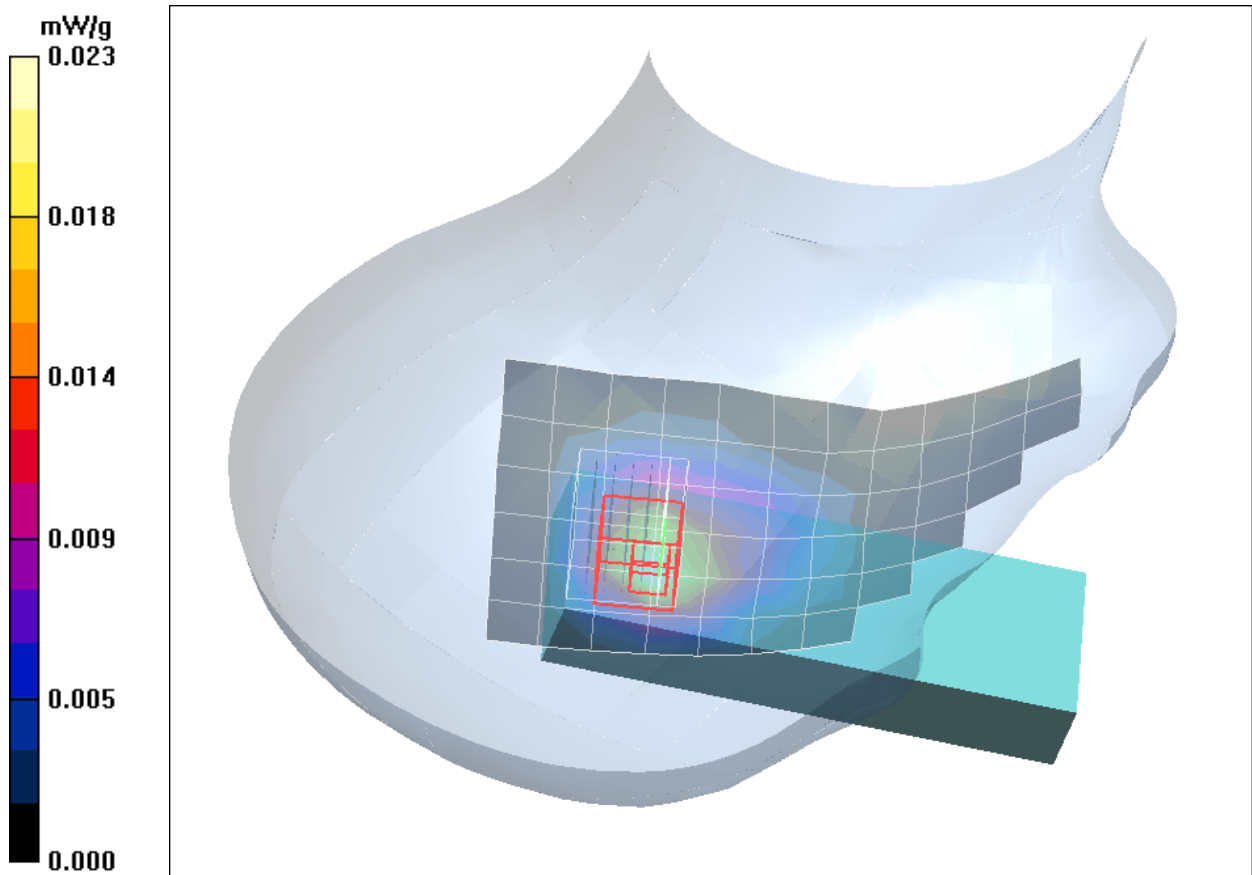


Fig. 4: SAR distribution for DECT US, channel 2, tilted position, right side of head, Antenna 1 (April 03, 2012; Ambient Temperature: 21.6°C; Liquid Temperature: 21.3°C)

Test Laboratory: Imst GmbH, DASY Yellow (II); File Name: [UDT111\\_yplm\\_1\\_ant2.da4](#)

DUT: Panasonic; Type: KX-UDT111;

Program Name: DECT

Communication System: DECT US; Frequency: 1924.99 MHz; Duty Cycle: 1:24

Medium parameters used:  $f = 1924.99$  MHz;  $\sigma = 1.46$  mho/m;  $\epsilon_r = 39.5$ ;  $\rho = 1000$  kg/m<sup>3</sup>

Phantom section: Left Section

DASY4 Configuration:

- Probe: EX3DV4 - SN3536; ConvF(8.07, 8.07, 8.07); Calibrated: 26.09.2011
- Sensor-Surface: 4mm (Mechanical Surface Detection)
- Electronics: DAE4 Sn631; Calibrated: 21.09.2011
- Phantom: SAM Glycol 1340; Type: QD 000 P40 CB; Serial: TP-1340
- Measurement SW: DASY4, V4.7 Build 80; Postprocessing SW: SEMCAD, V1.8 Build 186

**Cheek Left/Area Scan (7x13x1):** Measurement grid: dx=15mm, dy=15mm

Maximum value of SAR (measured) = 0.003 mW/g

**Cheek Left/Zoom Scan (7x7x7)/Cube 0:** Measurement grid: dx=5mm, dy=5mm, dz=5mm

Reference Value = 1.35 V/m; Power Drift = -0.070 dB

Peak SAR (extrapolated) = 0.013 W/kg

**SAR(1 g) = 0.00406 mW/g; SAR(10 g) = 0.00183 mW/g**

Maximum value of SAR (measured) = 0.005 mW/g

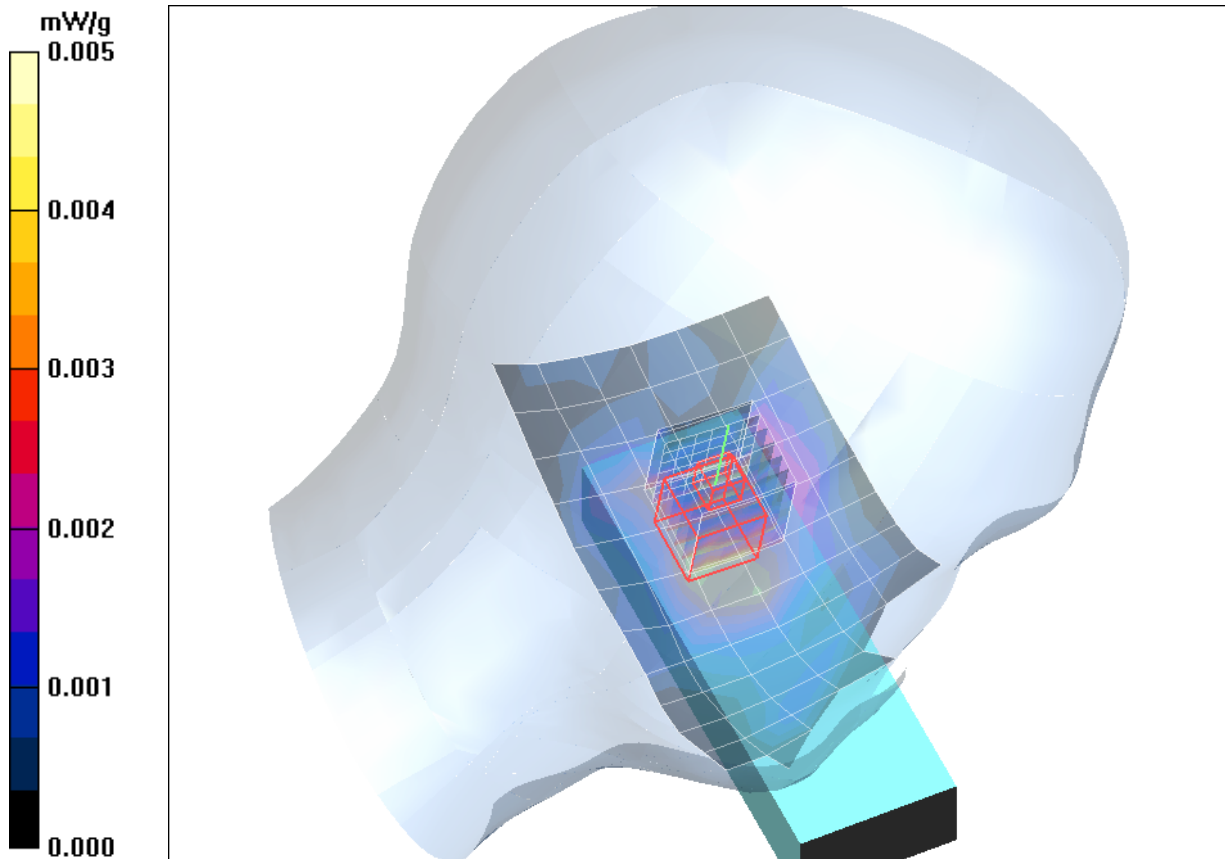


Fig. 5: SAR distribution for DECT US, channel 2, cheek position, left side of head, Antenna 2 (April 03, 2012; Ambient Temperature: 21.6°C; Liquid Temperature: 21.3°C).

**Test Laboratory:** Imst GmbH, DASY Yellow (II); **File Name:** [UDT111\\_yplm\\_2\\_ant2.da4](#)

**DUT:** Panasonic; **Type:** KX-UDT111;

**Program Name:** DECT

Communication System: DECT US; Frequency: 1924.99 MHz; Duty Cycle: 1:24

Medium parameters used:  $f = 1924.99$  MHz;  $\sigma = 1.46$  mho/m;  $\epsilon_r = 39.5$ ;  $\rho = 1000$  kg/m<sup>3</sup>

Phantom section: Left Section

DASY4 Configuration:

- Probe: EX3DV4 - SN3536; ConvF(8.07, 8.07, 8.07); Calibrated: 26.09.2011
- Sensor-Surface: 4mm (Mechanical Surface Detection)
- Electronics: DAE4 Sn631; Calibrated: 21.09.2011
- Phantom: SAM Glycol 1340; Type: QD 000 P40 CB; Serial: TP-1340
- Measurement SW: DASY4, V4.7 Build 80; Postprocessing SW: SEMCAD, V1.8 Build 186

**Tilted Left/Area Scan (7x13x1):** Measurement grid: dx=15mm, dy=15mm

Maximum value of SAR (measured) = 0.003 mW/g

**Tilted Left/Zoom Scan (7x7x7)/Cube 0:** Measurement grid: dx=5mm, dy=5mm, dz=5mm

Reference Value = 0.994 V/m; Power Drift = 0.184 dB

Peak SAR (extrapolated) = 0.013 W/kg

**SAR(1 g) = 0.00291 mW/g; SAR(10 g) = 0.00104 mW/g**

Maximum value of SAR (measured) = 0.004 mW/g

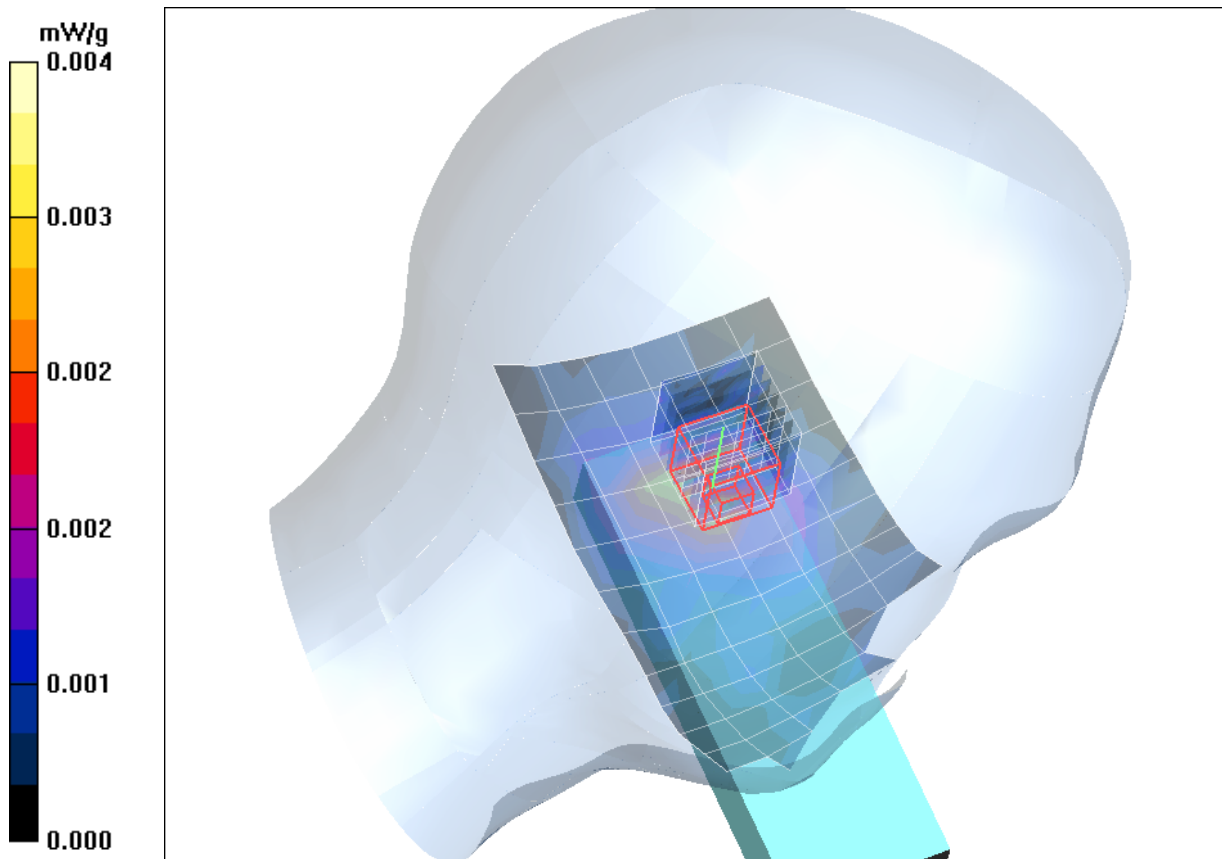


Fig. 6: SAR distribution for DECT US, channel 2, tilted position, left side of head, Antenna 2 (April 03, 2012; Ambient Temperature: 21.6°C; Liquid Temperature: 21.3°C).

Test Laboratory: Imst GmbH, DASY Yellow (II); File Name: [UDT111\\_yprm\\_1\\_ant2.da4](#)

DUT: Panasonic; Type: KX-UDT111;

Program Name: DECT

Communication System: DECT US; Frequency: 1924.99 MHz; Duty Cycle: 1:24

Medium parameters used:  $f = 1924.99$  MHz;  $\sigma = 1.46$  mho/m;  $\epsilon_r = 39.5$ ;  $\rho = 1000$  kg/m<sup>3</sup>

Phantom section: Right Section

DASY4 Configuration:

- Probe: EX3DV4 - SN3536; ConvF(8.07, 8.07, 8.07); Calibrated: 26.09.2011

- Sensor-Surface: 4mm (Mechanical Surface Detection)

- Electronics: DAE4 Sn631; Calibrated: 21.09.2011

- Phantom: SAM Glycol 1340; Type: QD 000 P40 CB; Serial: TP-1340

- Measurement SW: DASY4, V4.7 Build 80; Postprocessing SW: SEMCAD, V1.8 Build 186

**Cheek Right/Area Scan (7x13x1):** Measurement grid: dx=15mm, dy=15mm

Maximum value of SAR (measured) = 0.005 mW/g

**Cheek Right/Zoom Scan (7x7x7)/Cube 0:** Measurement grid: dx=5mm, dy=5mm, dz=5mm

Reference Value = 1.43 V/m; Power Drift = 0.032 dB

Peak SAR (extrapolated) = 0.010 W/kg

**SAR(1 g) = 0.00406 mW/g; SAR(10 g) = 0.00236 mW/g**

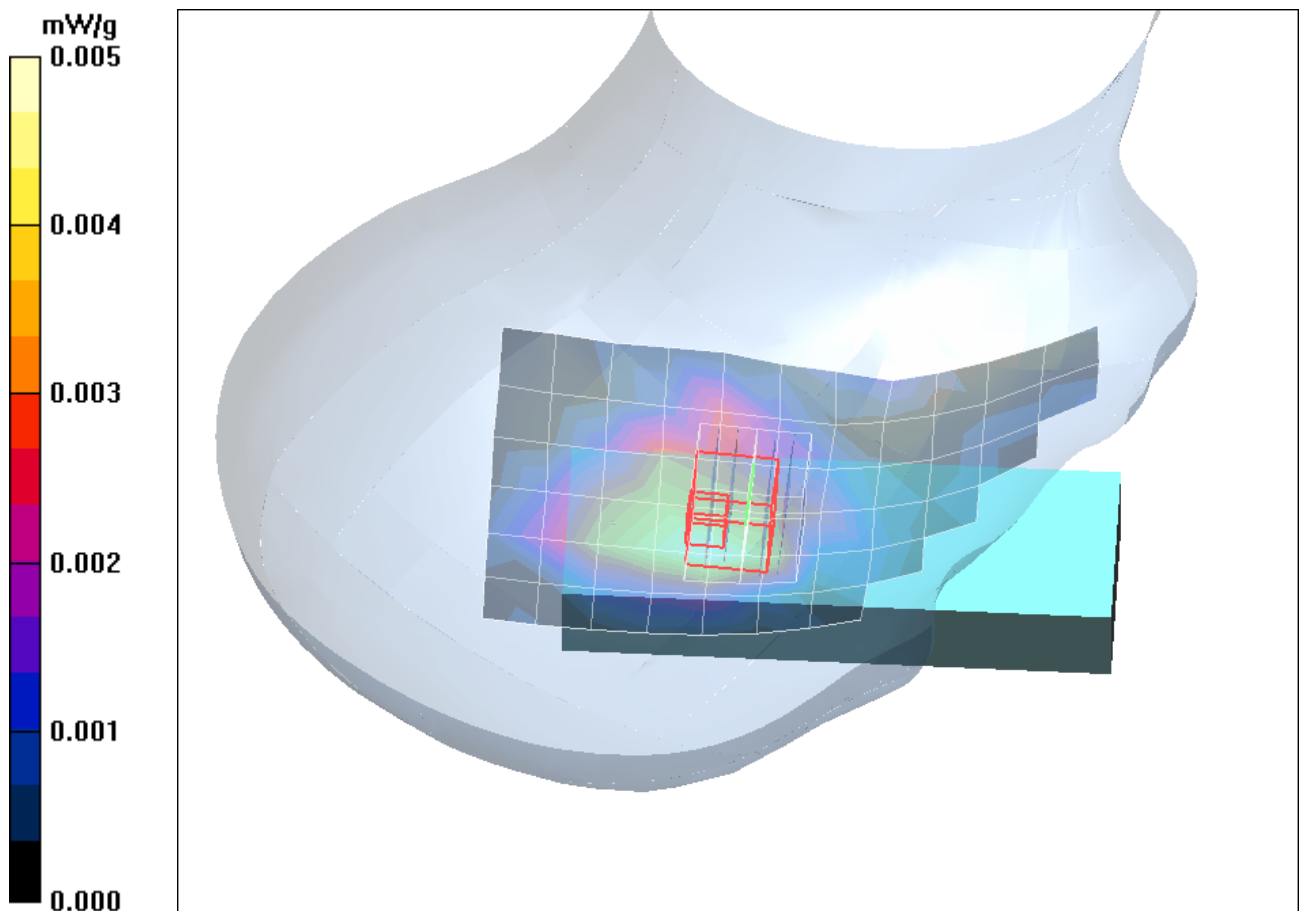


Fig. 7: SAR distribution for DECT US, channel 2, cheek position, right side of head, Antenna 2 (April 03, 2012; Ambient Temperature: 21.6°C; Liquid Temperature: 21.3°C).

Test Laboratory: Imst GmbH, DASY Yellow (II); File Name: [UDT111\\_yprm\\_2\\_ant2.da4](#)

DUT: Panasonic; Type: KX-UDT111; Se

Program Name: DECT

Communication System: DECT US; Frequency: 1924.99 MHz; Duty Cycle: 1:24

Medium parameters used:  $f = 1924.99$  MHz;  $\sigma = 1.46$  mho/m;  $\epsilon_r = 39.5$ ;  $\rho = 1000$  kg/m<sup>3</sup>

Phantom section: Right Section

DASY4 Configuration:

- Probe: EX3DV4 - SN3536; ConvF(8.07, 8.07, 8.07); Calibrated: 26.09.2011
- Sensor-Surface: 4mm (Mechanical Surface Detection)
- Electronics: DAE4 Sn631; Calibrated: 21.09.2011
- Phantom: SAM Glycol 1340; Type: QD 000 P40 CB; Serial: TP-1340
- Measurement SW: DASY4, V4.7 Build 80; Postprocessing SW: SEMCAD, V1.8 Build 186

**tilted Right/Area Scan (7x13x1):** Measurement grid: dx=15mm, dy=15mm

Maximum value of SAR (measured) = 0.003 mW/g

**tilted Right/Zoom Scan (7x7x7)/Cube 0:** Measurement grid: dx=5mm, dy=5mm, dz=5mm

Reference Value = 1.24 V/m; Power Drift = 0.155 dB

Peak SAR (extrapolated) = 0.007 W/kg

**SAR(1 g) = 0.00229 mW/g; SAR(10 g) = 0.00117 mW/g**

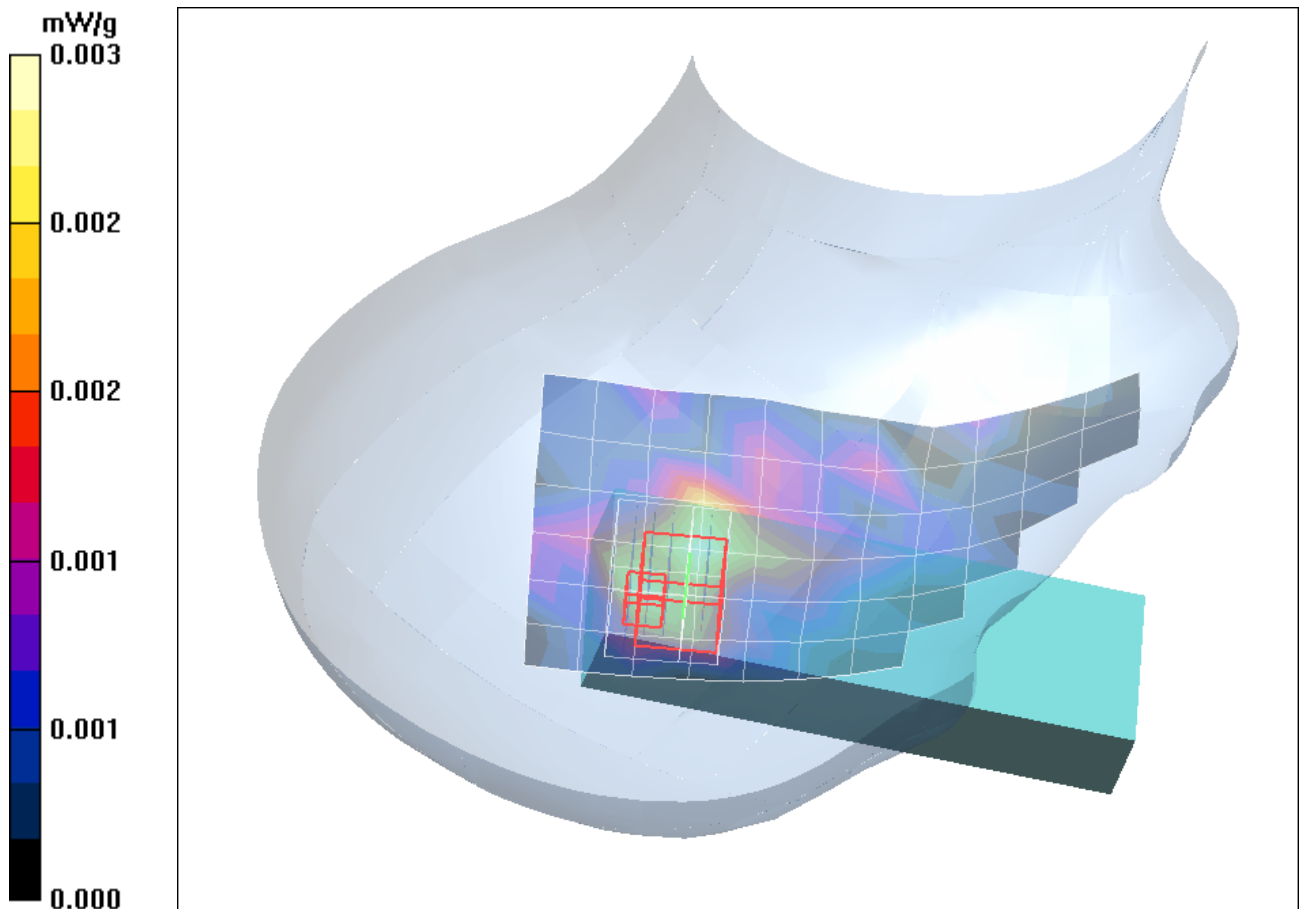


Fig. 8: SAR distribution for DECT US, channel 2, tilted position, right side of head, Antenna 2 (April 03, 2012; Ambient Temperature: 21.6°C; Liquid Temperature: 21.3°C)

## 2 SAR Distribution Plots, Body Measurements

Test Laboratory: Imst GmbH, DASY Yellow (II); File Name: [UDT111\\_yphm\\_1\\_dspl\\_up\\_hs\\_ant1.da4](#)

DUT: Panasonic; Type: KX-UDT111;

Program Name: DECT

Communication System: DECT US; Frequency: 1924.99 MHz; Duty Cycle: 1:24

Medium parameters used:  $f = 1924.99$  MHz;  $\sigma = 1.56$  mho/m;  $\epsilon_r = 52.6$ ;  $\rho = 1000$  kg/m<sup>3</sup>

Phantom section: Flat Section

DASY4 Configuration:

- Probe: EX3DV4 - SN3536; ConvF(8.03, 8.03, 8.03); Calibrated: 26.09.2011
- Sensor-Surface: 4mm (Mechanical Surface Detection)
- Electronics: DAE4 Sn631; Calibrated: 21.09.2011
- Phantom: SAM Glycol 1340; Type: QD 000 P40 CB; Serial: TP-1340
- Measurement SW: DASY4, V4.7 Build 80; Postprocessing SW: SEMCAD, V1.8 Build 186

**Body/Area Scan (7x12x1):** Measurement grid: dx=15mm, dy=15mm

Maximum value of SAR (measured) = 0.047 mW/g

**Body/Zoom Scan (7x7x7)/Cube 0:** Measurement grid: dx=5mm, dy=5mm, dz=5mm

Reference Value = 2.68 V/m; Power Drift = 0.129 dB

Peak SAR (extrapolated) = 0.088 W/kg

**SAR(1 g) = 0.047 mW/g; SAR(10 g) = 0.025 mW/g**

Maximum value of SAR (measured) = 0.051 mW/g

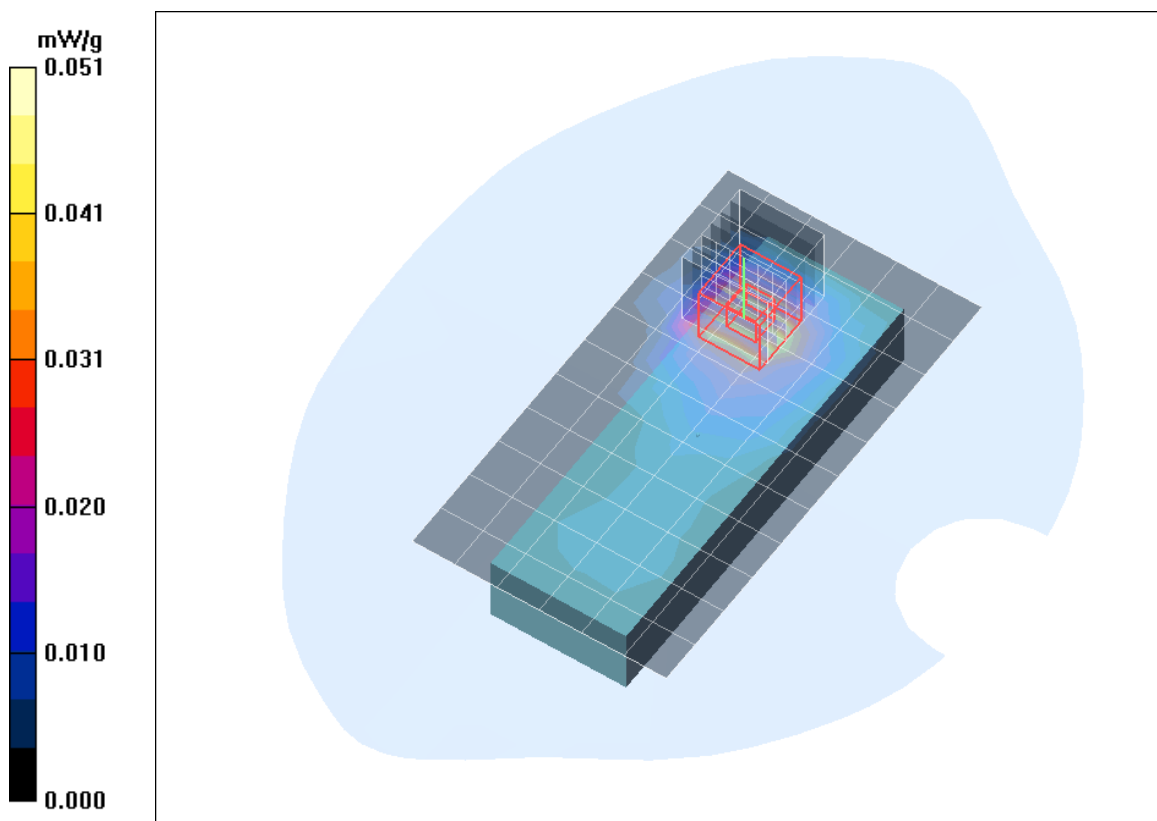


Fig. 9: SAR distribution for DECT US, channel 2, body worn configuration, display towards the phantom, with headset and 0 mm distance, Antenna 1 (April 12, 2012; Ambient Temperature: 21.8° C; Liquid Temperature: 21.4° C).

**Test Laboratory:** Imst GmbH, DASY Yellow (II); **File Name:**

[UDT111\\_yphm\\_2\\_dspl\\_down\\_hs\\_ant1.da4](#)

**DUT:** Panasonic; **Type:** KX-UDT111;

**Program Name:** DECT

Communication System: DECT US; Frequency: 1924.99 MHz; Duty Cycle: 1:24

Medium parameters used:  $f = 1924.99$  MHz;  $\sigma = 1.56$  mho/m;  $\epsilon_r = 52.6$ ;  $\rho = 1000$  kg/m<sup>3</sup>

Phantom section: Flat Section

DASY4 Configuration:

- Probe: EX3DV4 - SN3536; ConvF(8.03, 8.03, 8.03); Calibrated: 26.09.2011

- Sensor-Surface: 4mm (Mechanical Surface Detection)

- Electronics: DAE4 Sn631; Calibrated: 21.09.2011

- Phantom: SAM Glycol 1340; Type: QD 000 P40 CB; Serial: TP-1340

- Measurement SW: DASY4, V4.7 Build 80; Postprocessing SW: SEMCAD, V1.8 Build 186

**Body/Area Scan (7x12x1):** Measurement grid: dx=15mm, dy=15mm

Maximum value of SAR (measured) = 0.010 mW/g

**Body/Zoom Scan (7x7x7)/Cube 0:** Measurement grid: dx=5mm, dy=5mm, dz=5mm

Reference Value = 1.54 V/m; Power Drift = -0.138 dB

Peak SAR (extrapolated) = 0.018 W/kg

**SAR(1 g) = 0.00914 mW/g; SAR(10 g) = 0.005 mW/g**

Maximum value of SAR (measured) = 0.011 mW/g

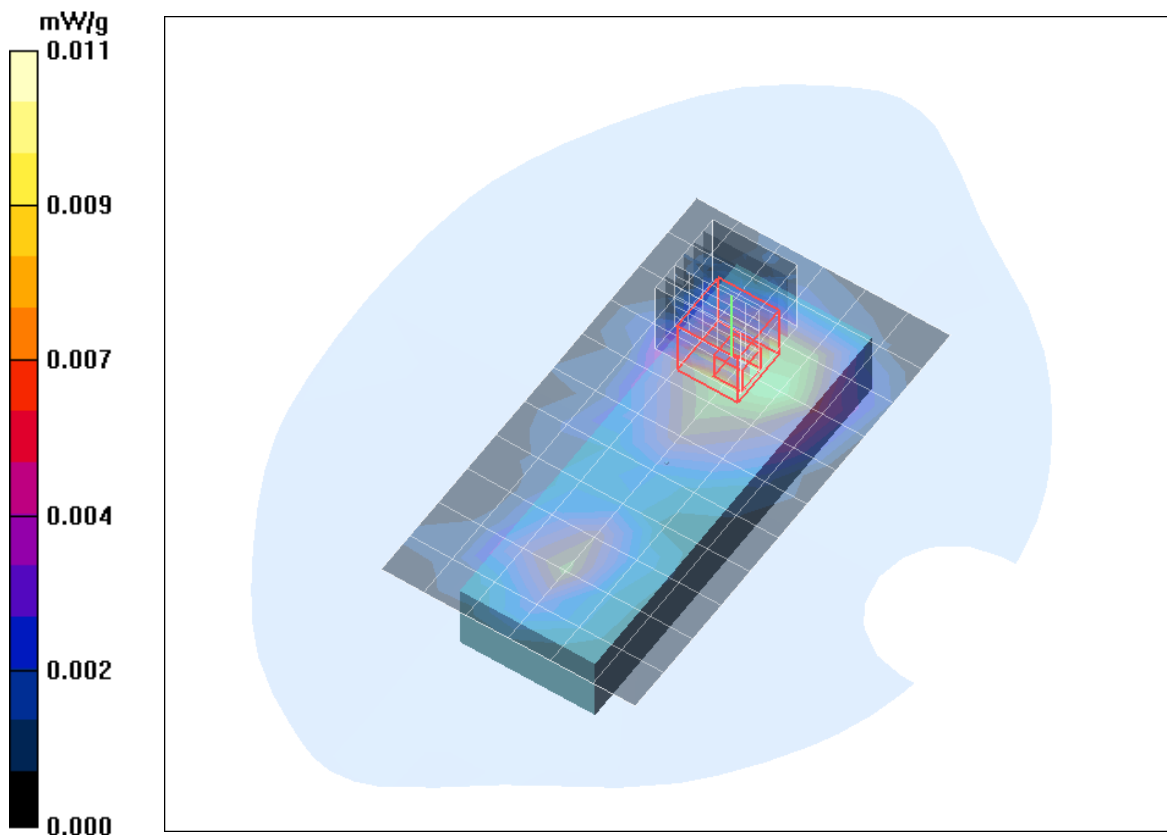


Fig. 10: SAR distribution for DECT US, channel 2, body worn configuration, display towards the ground, with headset and 0 mm distance, Antenna 1 (April 12, 2012; Ambient Temperature: 21.8° C; Liquid Temperature: 21.4° C).

Test Laboratory: Imst GmbH, DASY Yellow (II); File Name: [UDT111\\_yphm\\_1\\_dspl\\_up\\_hs\\_ant2.da4](#)

DUT: Panasonic; Type: KX-UDT111;

Program Name: DECT

Communication System: DECT US; Frequency: 1924.99 MHz; Duty Cycle: 1:24

Medium parameters used:  $f = 1924.99$  MHz;  $\sigma = 1.56$  mho/m;  $\epsilon_r = 52.6$ ;  $\rho = 1000$  kg/m<sup>3</sup>

Phantom section: Flat Section

DASY4 Configuration:

- Probe: EX3DV4 - SN3536; ConvF(8.03, 8.03, 8.03); Calibrated: 26.09.2011
- Sensor-Surface: 4mm (Mechanical Surface Detection)
- Electronics: DAE4 Sn631; Calibrated: 21.09.2011
- Phantom: SAM Glycol 1340; Type: QD 000 P40 CB; Serial: TP-1340
- Measurement SW: DASY4, V4.7 Build 80; Postprocessing SW: SEMCAD, V1.8 Build 186

**Body/Area Scan (7x12x1):** Measurement grid: dx=15mm, dy=15mm

Maximum value of SAR (measured) = 0.005 mW/g

**Body/Zoom Scan (7x7x7)/Cube 0:** Measurement grid: dx=5mm, dy=5mm, dz=5mm

Reference Value = 1.10 V/m; Power Drift = -0.175 dB

Peak SAR (extrapolated) = 0.015 W/kg

**SAR(1 g) = 0.00714 mW/g; SAR(10 g) = 0.00313 mW/g**

Maximum value of SAR (measured) = 0.008 mW/g

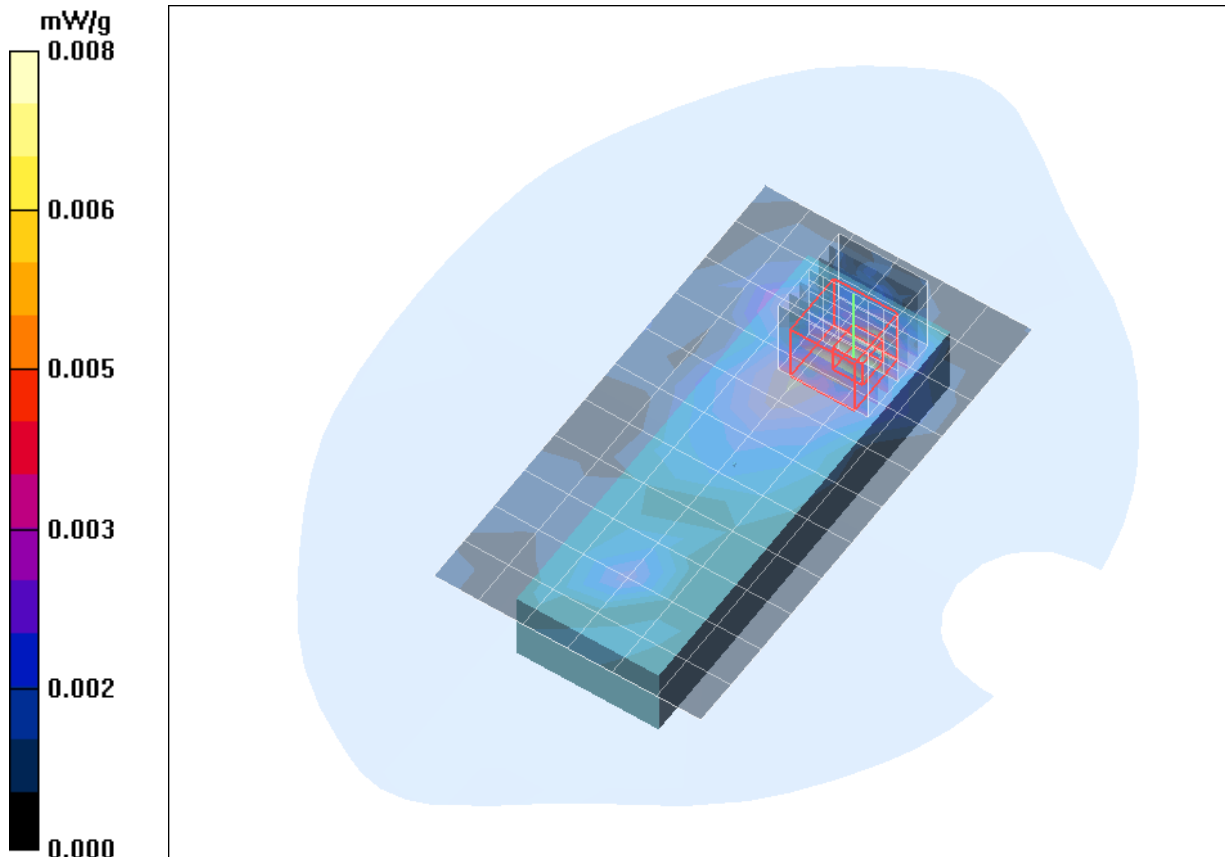


Fig. 11: SAR distribution for DECT US, channel 2, body worn configuration, display towards the phantom, with headset and 0 mm distance, Antenna 2 (April 12, 2012; Ambient Temperature: 21.8° C; Liquid Temperature: 21.4° C).

Test Laboratory: Imst GmbH, DASY Yellow (II); File Name:

[UDT111\\_yphm\\_2\\_dspl\\_down\\_hs\\_ant2.da4](#)

DUT: Panasonic; Type: KX-UDT111;

Program Name: DECT

Communication System: DECT US; Frequency: 1924.99 MHz; Duty Cycle: 1:24

Medium parameters used:  $f = 1924.99$  MHz;  $\sigma = 1.56$  mho/m;  $\epsilon_r = 52.6$ ;  $\rho = 1000$  kg/m<sup>3</sup>

Phantom section: Flat Section

DASY4 Configuration:

- Probe: EX3DV4 - SN3536; ConvF(8.03, 8.03, 8.03); Calibrated: 26.09.2011

- Sensor-Surface: 4mm (Mechanical Surface Detection)

- Electronics: DAE4 Sn631; Calibrated: 21.09.2011

- Phantom: SAM Glycol 1340; Type: QD 000 P40 CB; Serial: TP-1340

- Measurement SW: DASY4, V4.7 Build 80; Postprocessing SW: SEMCAD, V1.8 Build 186

**Body/Area Scan (7x12x1):** Measurement grid: dx=15mm, dy=15mm

Maximum value of SAR (measured) = 0.004 mW/g

**Body/Zoom Scan (7x7x7)/Cube 0:** Measurement grid: dx=5mm, dy=5mm, dz=5mm

Reference Value = 0.717 V/m; Power Drift = 0.001 dB

Peak SAR (extrapolated) = 0.013 W/kg

**SAR(1 g) = 0.00454 mW/g; SAR(10 g) = 0.00215 mW/g**

Maximum value of SAR (measured) = 0.005 mW/g

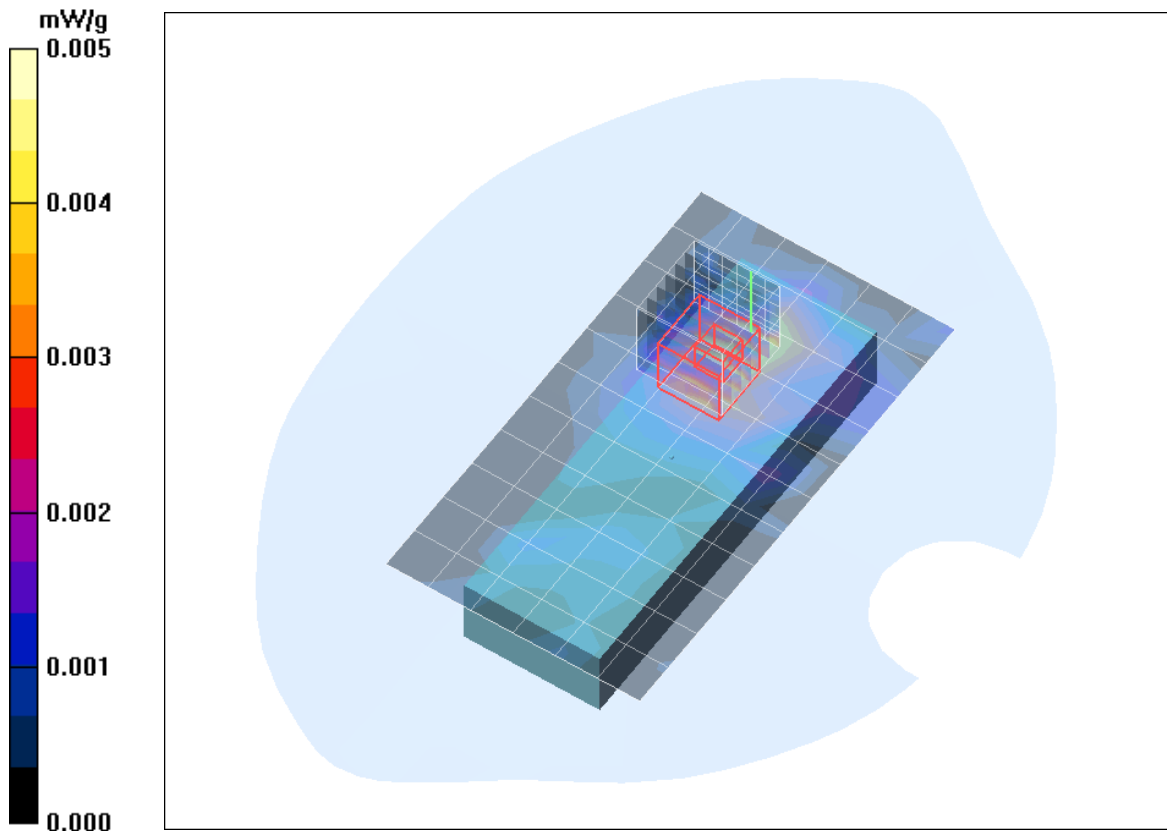


Fig. 12: SAR distribution for DECT US, channel 2, body worn configuration, display towards the ground, with headset and 0 mm distance, Antenna 2 (April 12, 2012; Ambient Temperature: 21.8° C; Liquid Temperature: 21.4° C).

### 3 SAR Z-Axis Scans (Validation)

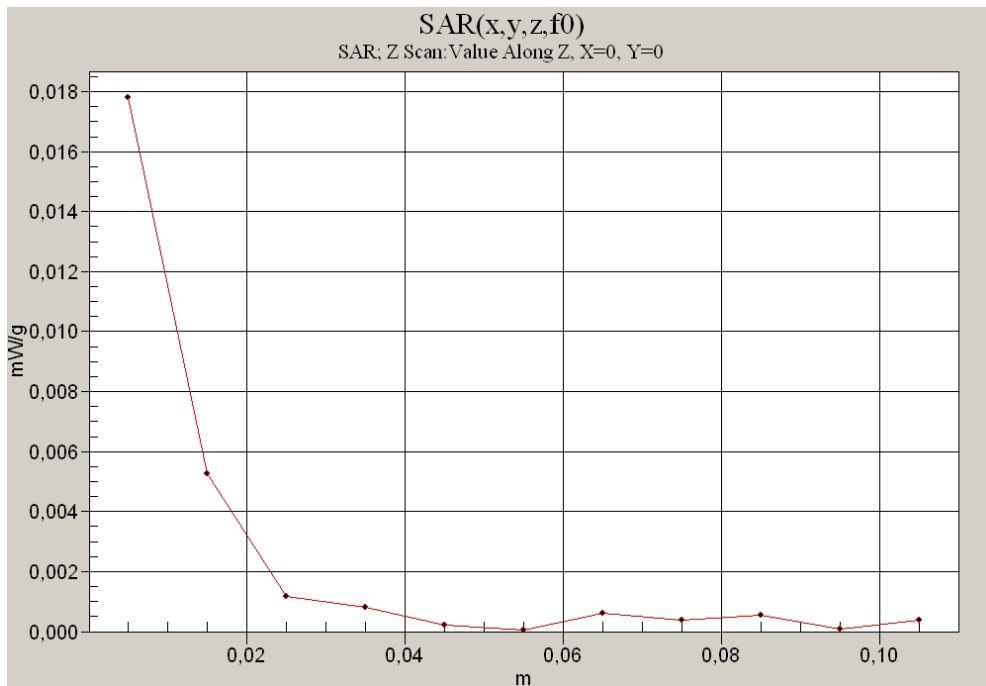


Fig. 13: SAR versus liquid depth, 1900 MHz, head (April 03, 2012; Ambient Temperature: 21.6° C; Liquid Temperature: 21.3° C).

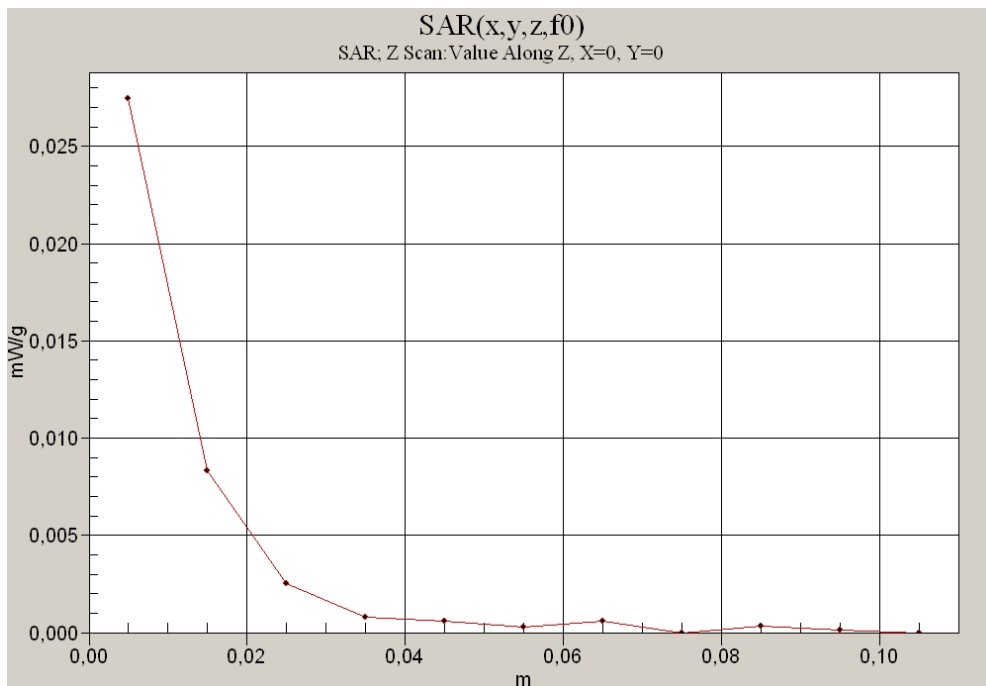


Fig. 14: SAR versus liquid depth, 1900 MHz, body (April 12, 2012; Ambient Temperature: 21.8° C; Liquid Temperature: 21.4° C).

#### 4 SAR Z-Axis Scans (Measurements)

The following pictures show the plots of SAR versus liquid depth for the worst case values.

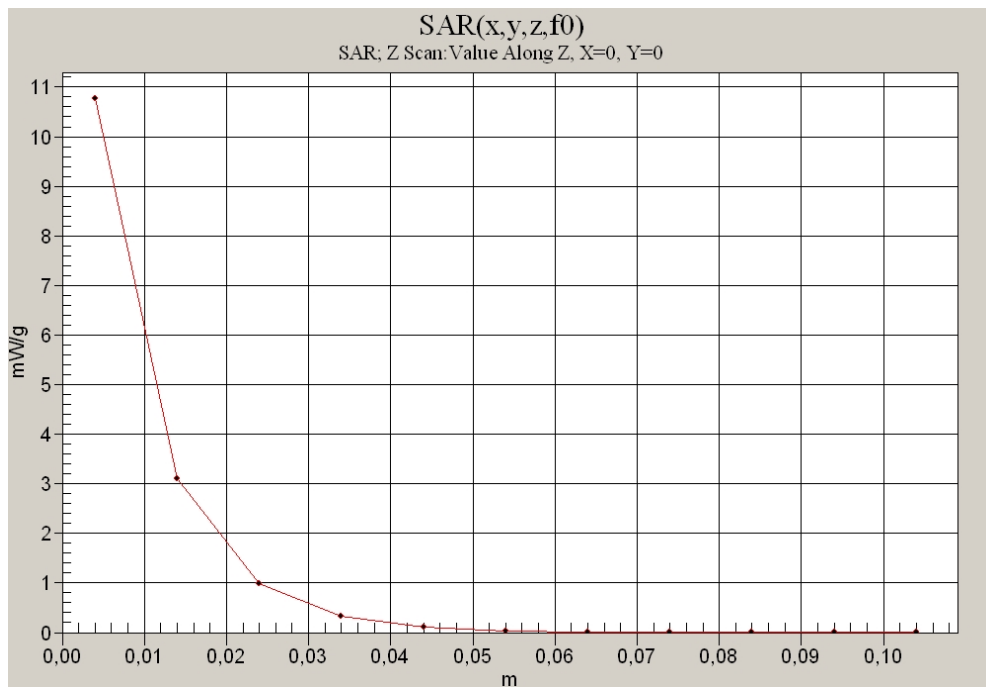


Fig. 15: SAR versus liquid depth, head: DECT US, channel 2, cheek position, right side of head (April 03, 2012; Ambient Temperature: 21.6° C; Liquid Temperature: 21.3° C).

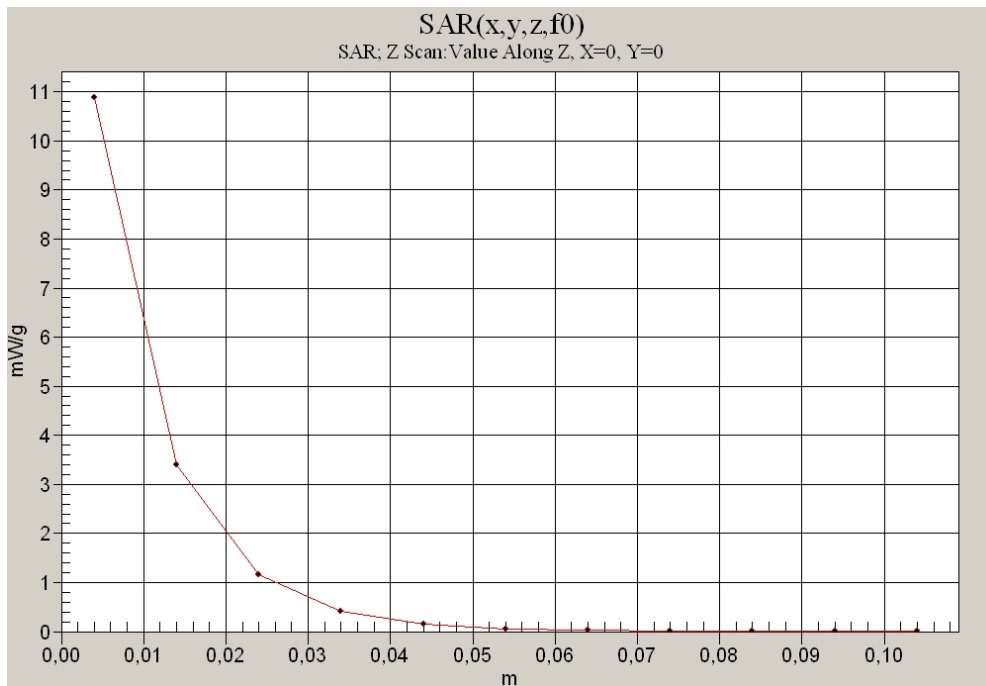


Fig. 16: SAR versus liquid depth, body: DECT US, antenna 2, headset and 0 mm distance, display towards the phantom (April 12, 2012; Ambient Temperature: 21.8° C; Liquid Temperature: 21.4° C).