

Appendix for the Report

Dosimetric Assessment of the Portable Device KX-TPA60 from Panasonic (FCC ID: ACJ96NKX-TPA60) (IC: 216A-KXTPA60)

According to the FCC Requirements SAR Distribution Plots

July 11, 2014

IMST GmbH
Carl-Friedrich-Gauß-Str. 2 - 4
D-47475 Kamp-Lintfort

Customer
Panasonic System Networks Co., Ltd.
1 - 62, 4 - chome Minoshima, Hakata,
Fukuoka 812-8531
Japan

The test results only relate to the items tested.

This report shall not be reproduced except in full without the written approval of the testing laboratory.

1 SAR Distribution Plots

Test Laboratory: Imst GmbH, DASY Yellow (II); File Name: [TPA60_yplm_1.da4](#)

DUT: Panasonic; Type: KX-TPA60;

Program Name: US DECT

Communication System: DECT US; Frequency: 1924.99 MHz; Duty Cycle: 1:12

Medium parameters used: $f = 1924.99$ MHz; $\sigma = 1.45$ mho/m; $\epsilon_r = 41.1$; $\rho = 1000$ kg/m³

Phantom section: Left Section

DASY4 Configuration:

- Probe: ET3DV6R - SN1579; ConvF(5, 5, 5); Calibrated: 28.01.2014
- Sensor-Surface: 4mm (Mechanical Surface Detection)
- Electronics: DAE4 Sn631; Calibrated: 23.09.2013
- Phantom: SAM Glycol 1340; Type: QD 000 P40 CB; Serial: TP-1340
- Measurement SW: DASY4, V4.7 Build 80; Postprocessing SW: SEMCAD, V1.8 Build 186

Cheek Left/Area Scan (6x12x1): Measurement grid: dx=15mm, dy=15mm

Maximum value of SAR (measured) = 0.018 mW/g

Cheek Left/Zoom Scan (7x7x7)/Cube 0: Measurement grid: dx=5mm, dy=5mm, dz=5mm

Reference Value = 3.30 V/m; Power Drift = -0.190 dB

Peak SAR (extrapolated) = 0.027 W/kg

SAR(1 g) = 0.017 mW/g; SAR(10 g) = 0.011 mW/g

Maximum value of SAR (measured) = 0.019 mW/g

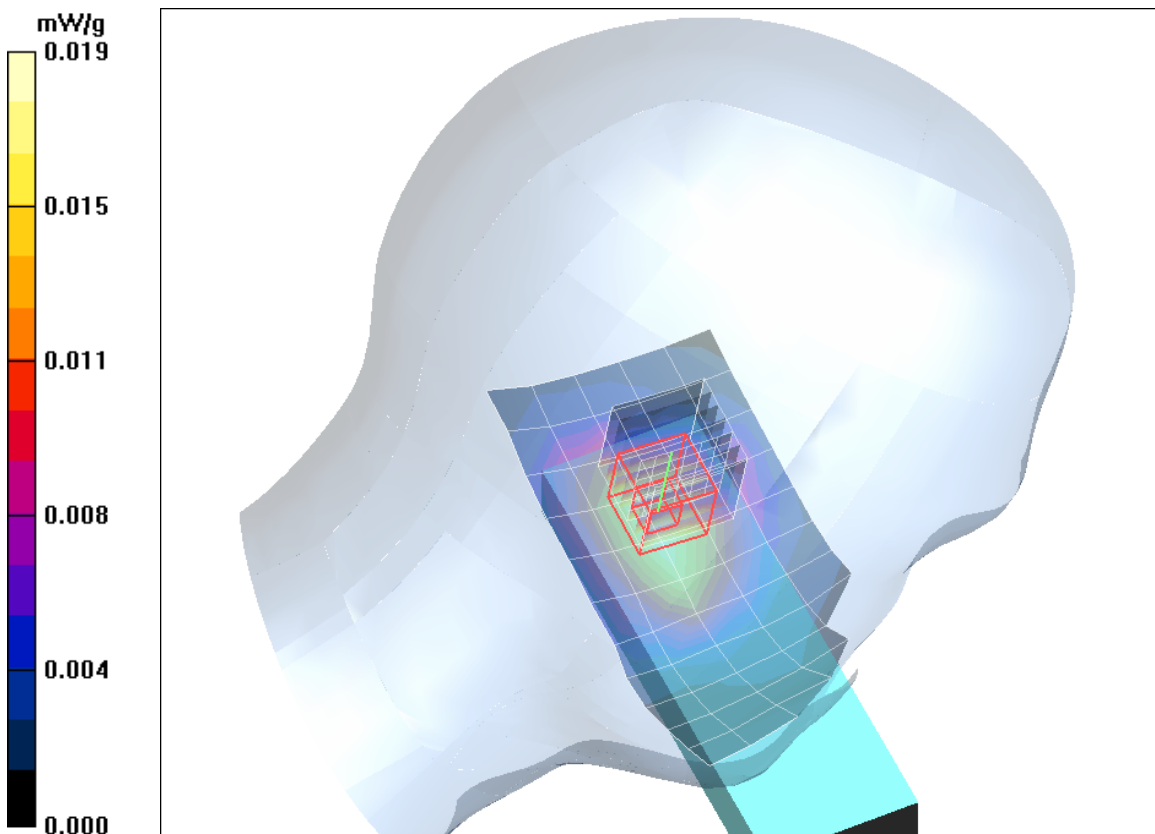


Fig. 1: SAR distribution for DECT US, channel 2, cheek position, left side of head (July 11, 2014)

Test Laboratory: Imst GmbH, DASY Yellow (II); File Name: [TPA60_yplm_2.da4](#)

DUT: Panasonic; Type: KX-TPA60;

Program Name: US DECT

Communication System: DECT US; Frequency: 1924.99 MHz; Duty Cycle: 1:12

Medium parameters used: $f = 1924.99$ MHz; $\sigma = 1.45$ mho/m; $\epsilon_r = 41.1$; $\rho = 1000$ kg/m³

Phantom section: Left Section

DASY4 Configuration:

- Probe: ET3DV6R - SN1579; ConvF(5, 5, 5); Calibrated: 28.01.2014
- Sensor-Surface: 4mm (Mechanical Surface Detection)
- Electronics: DAE4 Sn631; Calibrated: 23.09.2013
- Phantom: SAM Glycol 1340; Type: QD 000 P40 CB; Serial: TP-1340
- Measurement SW: DASY4, V4.7 Build 80; Postprocessing SW: SEMCAD, V1.8 Build 186

Tilted Left/Area Scan (6x12x1): Measurement grid: dx=15mm, dy=15mm

Maximum value of SAR (measured) = 0.012 mW/g

Tilted Left/Zoom Scan (7x7x7)/Cube 0: Measurement grid: dx=5mm, dy=5mm, dz=5mm

Reference Value = 2.90 V/m; Power Drift = -0.092 dB

Peak SAR (extrapolated) = 0.017 W/kg

SAR(1 g) = 0.011 mW/g; SAR(10 g) = 0.00686 mW/g

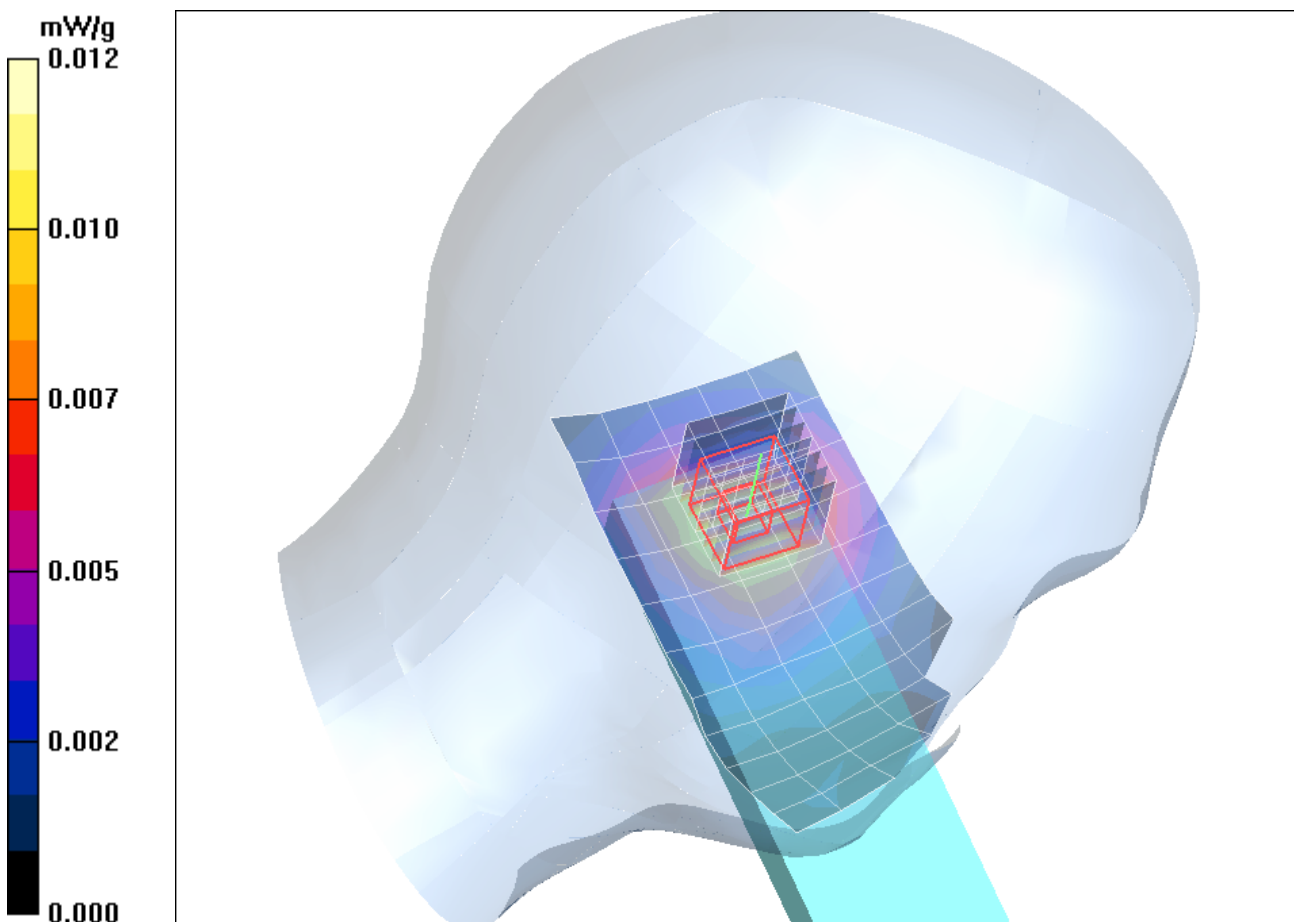


Fig. 2: SAR distribution for DECT US, channel 2, tilted position, left side of head (July 11, 2014)

Test Laboratory: Imst GmbH, DASY Yellow (II); **File Name:** [TPA60_yprm_1.da4](#)

DUT: Panasonic; **Type:** KX-TPA60;

Program Name: US DECT

Communication System: DECT US; Frequency: 1924.99 MHz; Duty Cycle: 1:12

Medium parameters used: $f = 1924.99$ MHz; $\sigma = 1.45$ mho/m; $\epsilon_r = 41.1$; $\rho = 1000$ kg/m³

Phantom section: Right Section

DASY4 Configuration:

- Probe: ET3DV6R - SN1579; ConvF(5, 5, 5); Calibrated: 28.01.2014
- Sensor-Surface: 4mm (Mechanical Surface Detection)
- Electronics: DAE4 Sn631; Calibrated: 23.09.2013
- Phantom: SAM Glycol 1340; Type: QD 000 P40 CB; Serial: TP-1340
- Measurement SW: DASY4, V4.7 Build 80; Postprocessing SW: SEMCAD, V1.8 Build 186

Cheek Right/Area Scan (6x12x1): Measurement grid: dx=15mm, dy=15mm

Maximum value of SAR (measured) = 0.016 mW/g

Cheek Right/Zoom Scan (7x7x7)/Cube 0: Measurement grid: dx=5mm, dy=5mm, dz=5mm

Reference Value = 2.83 V/m; Power Drift = 0.155 dB

Peak SAR (extrapolated) = 0.023 W/kg

SAR(1 g) = 0.015 mW/g; SAR(10 g) = 0.00932 mW/g

Maximum value of SAR (measured) = 0.017 mW/g

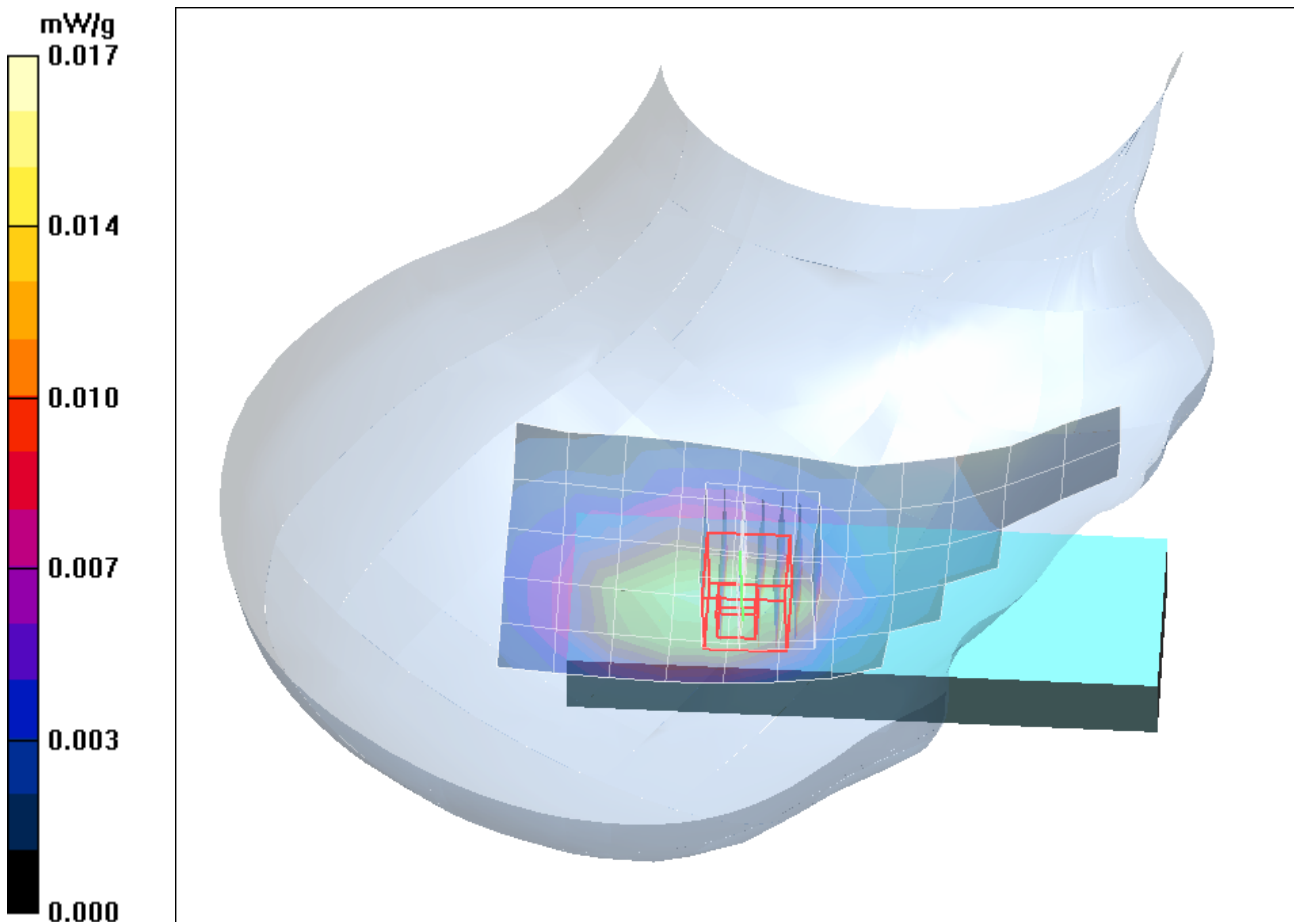


Fig. 3: SAR distribution for DECT US, channel 2, cheek position, right side of head (July 11, 2014)

Test Laboratory: Imst GmbH, DASY Yellow (II); File Name: [TPA60_yprm_2.da4](#)

DUT: Panasonic; Type: KX-TPA60;

Program Name: US DECT

Communication System: DECT US; Frequency: 1924.99 MHz; Duty Cycle: 1:12

Medium parameters used: $f = 1924.99$ MHz; $\sigma = 1.45$ mho/m; $\epsilon_r = 41.1$; $\rho = 1000$ kg/m³

Phantom section: Right Section

DASY4 Configuration:

- Probe: ET3DV6R - SN1579; ConvF(5, 5, 5); Calibrated: 28.01.2014
- Sensor-Surface: 4mm (Mechanical Surface Detection)
- Electronics: DAE4 Sn631; Calibrated: 23.09.2013
- Phantom: SAM Glycol 1340; Type: QD 000 P40 CB; Serial: TP-1340
- Measurement SW: DASY4, V4.7 Build 80; Postprocessing SW: SEMCAD, V1.8 Build 186

Tilted Right/Area Scan (6x12x1): Measurement grid: dx=15mm, dy=15mm

Maximum value of SAR (measured) = 0.009 mW/g

Tilted Right/Zoom Scan (7x7x7)/Cube 0: Measurement grid: dx=5mm, dy=5mm, dz=5mm

Reference Value = 2.65 V/m; Power Drift = -0.022 dB

Peak SAR (extrapolated) = 0.014 W/kg

SAR(1 g) = 0.00845 mW/g; SAR(10 g) = 0.00541 mW/g

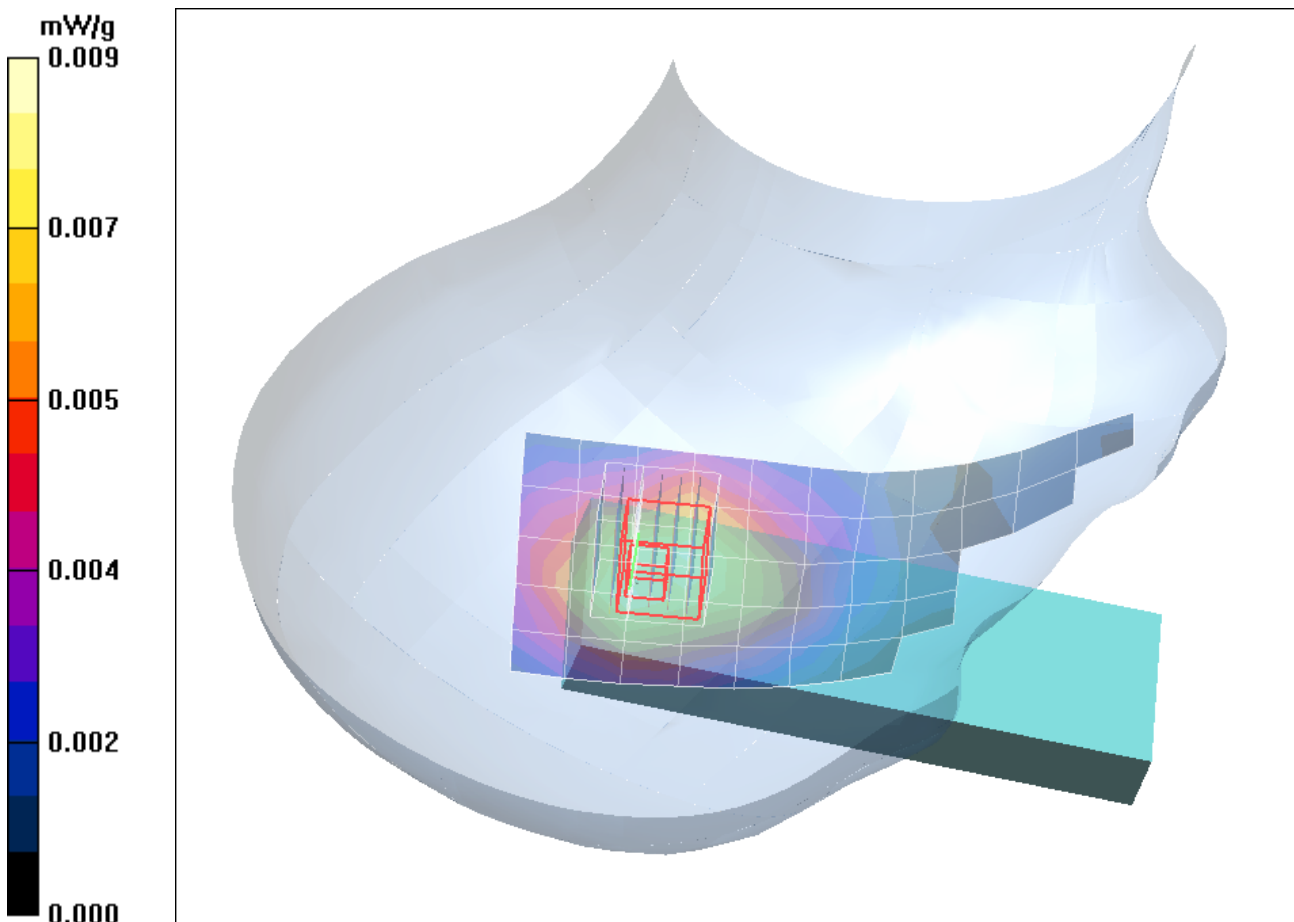


Fig. 4: SAR distribution for DECT US, channel 2, tilted position, right side of head (July 11, 2014)

Test Laboratory: Imst GmbH, DASY Yellow (II); File Name: [TPA60_yphm_1_front_hs_clip.da4](#)

DUT: Panasonic; Type: KX-TPA60;

Program Name: US DECT

Communication System: DECT US; Frequency: 1924.99 MHz; Duty Cycle: 1:12

Medium parameters used: $f = 1924.99$ MHz; $\sigma = 1.57$ mho/m; $\epsilon_r = 53.5$; $\rho = 1000$ kg/m³

Phantom section: Flat Section

DASY4 Configuration:

- Probe: ET3DV6R - SN1579; ConvF(4.57, 4.57, 4.57); Calibrated: 28.01.2014

- Sensor-Surface: 4mm (Mechanical Surface Detection)

- Electronics: DAE4 Sn631; Calibrated: 23.09.2013

- Phantom: SAM Glycol 1340; Type: QD 000 P40 CB; Serial: TP-1340

- Measurement SW: DASY4, V4.7 Build 80; Postprocessing SW: SEMCAD, V1.8 Build 186

Body/Area Scan (7x13x1): Measurement grid: dx=15mm, dy=15mm

Maximum value of SAR (measured) = 0.015 mW/g

Body/Zoom Scan (7x7x7)/Cube 0: Measurement grid: dx=5mm, dy=5mm, dz=5mm

Reference Value = 2.71 V/m; Power Drift = -0.071 dB

Peak SAR (extrapolated) = 0.021 W/kg

SAR(1 g) = 0.014 mW/g; SAR(10 g) = 0.00916 mW/g

Maximum value of SAR (measured) = 0.016 mW/g

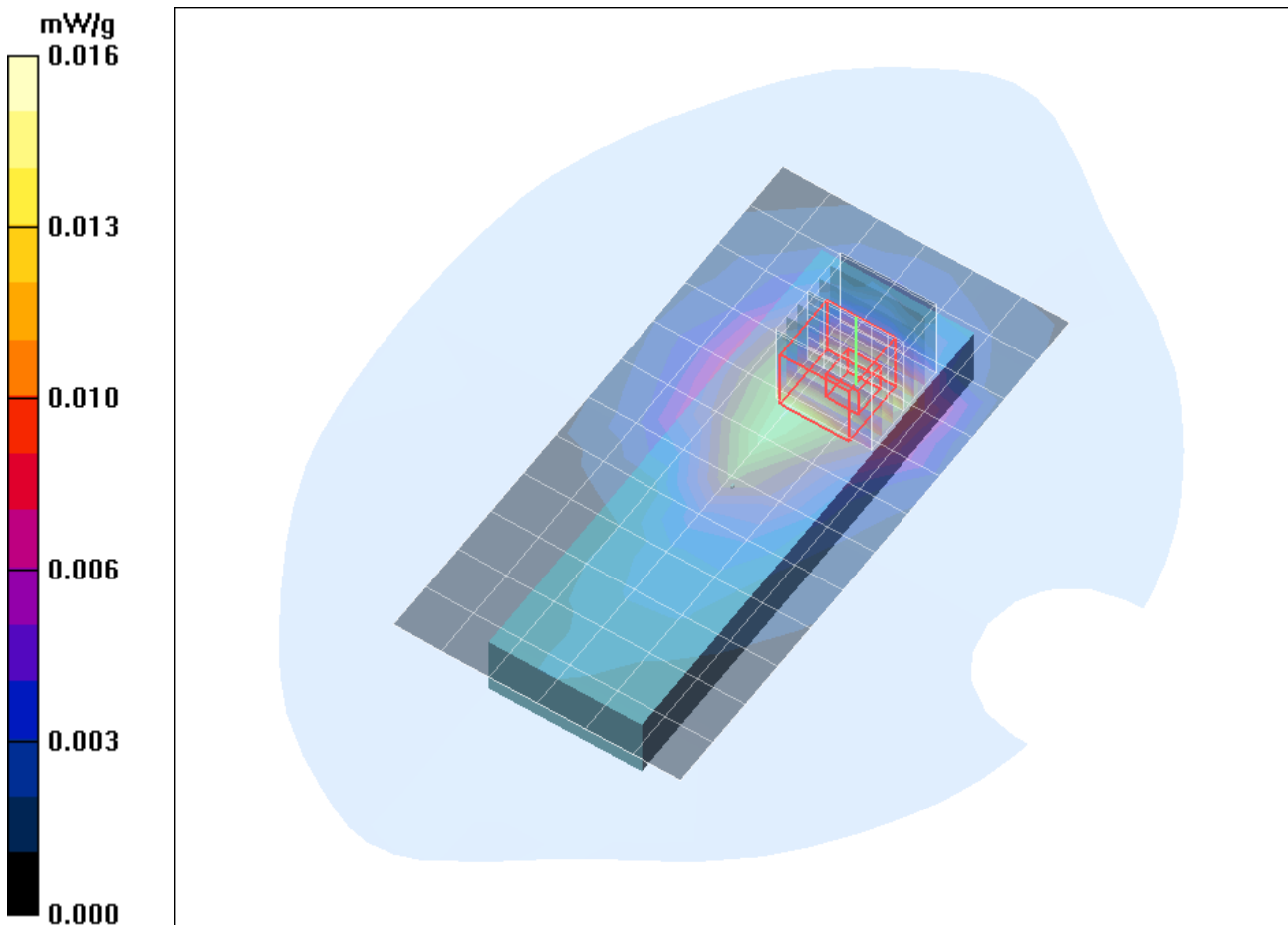


Fig. 5: SAR distribution for DECT US, channel 2, body worn configuration, front side of the device towards the phantom (July 10, 2014)

Test Laboratory: Imst GmbH, DASY Yellow (II); File Name: [TPA60_yphm_2_back_hs_clip.da4](#)

DUT: Panasonic; Type: KX-TPA60;

Program Name: US DECT

Communication System: DECT US; Frequency: 1924.99 MHz; Duty Cycle: 1:12

Medium parameters used: $f = 1924.99$ MHz; $\sigma = 1.57$ mho/m; $\epsilon_r = 53.5$; $\rho = 1000$ kg/m³

Phantom section: Flat Section

DASY4 Configuration:

- Probe: ET3DV6R - SN1579; ConvF(4.57, 4.57, 4.57); Calibrated: 28.01.2014
- Sensor-Surface: 4mm (Mechanical Surface Detection)
- Electronics: DAE4 Sn631; Calibrated: 23.09.2013
- Phantom: SAM Glycol 1340; Type: QD 000 P40 CB; Serial: TP-1340
- Measurement SW: DASY4, V4.7 Build 80; Postprocessing SW: SEMCAD, V1.8 Build 186

Body/Area Scan (7x13x1): Measurement grid: dx=15mm, dy=15mm

Maximum value of SAR (measured) = 0.026 mW/g

Body/Zoom Scan (7x7x7)/Cube 0: Measurement grid: dx=5mm, dy=5mm, dz=5mm

Reference Value = 2.40 V/m; Power Drift = 0.033 dB

Peak SAR (extrapolated) = 0.039 W/kg

SAR(1 g) = 0.023 mW/g; SAR(10 g) = 0.012 mW/g

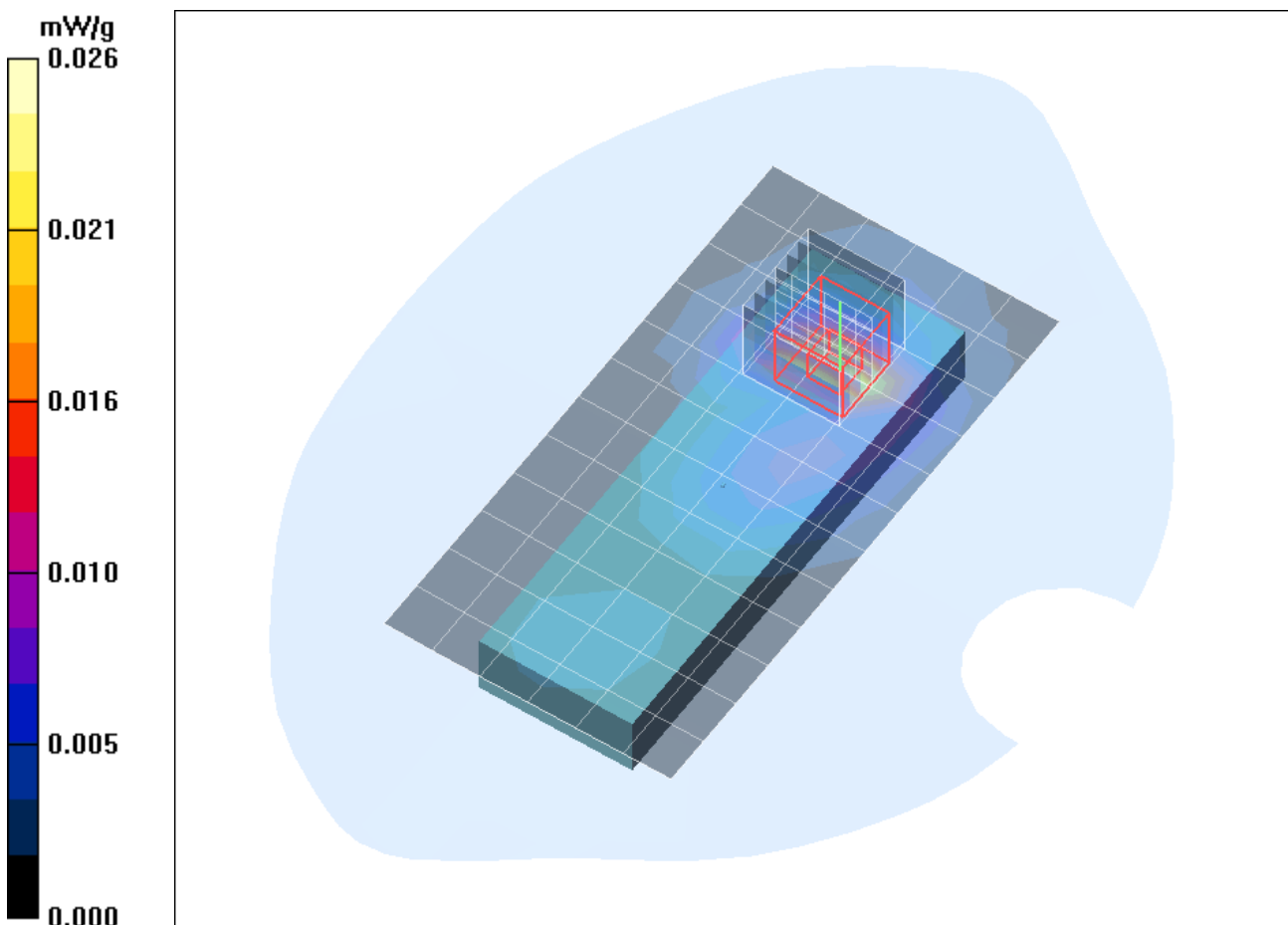


Fig. 6: SAR distribution for DECT US, channel 2, body worn configuration, back side of the device towards the phantom (July 10, 2014)