



The Testcenter facility 'Dosimetric Test Lab' within IMST GmbH is accredited by the German National 'Deutsche Akkreditierungsstelle GmbH (DAkkS)' for testing according to the scope as listed in the accreditation certificate: D-PL-12139-01-01.

---

## Report

# Dosimetric Assessment of the Portable Device KX-TGDA20 (FCC ID: ACJ96NKX-TGDA20)

## According to the FCC Requirements

December 11, 2013

### IMST GmbH

Carl-Friedrich-Gauß-Str. 2 - 4  
D-47475 Kamp-Lintfort

### Customer

Panasonic System Networks Co., Ltd.  
1 - 62, 4 - chome Minoshima, Hakata,  
Fukuoka 812-8531  
Japan

The test results only relate to the items tested. This report shall not be reproduced except in full without the written approval of the testing laboratory. This version supersedes all previous versions of this report.

## Executive Summary

The KX-TGDA20 is a new cordless phone (Portable Device) from Panasonic operating in the 1920 MHz frequency range. The device has an integrated antenna and works in US DECT standard.

The objective of the measurements done by IMST was the dosimetric assessment of one device in a worst case setup in head configuration. Since there was a special test software available, SAR tests in DECT were conducted with a specific channel and maximum output power during the measurement. The examinations have been carried out with the dosimetric assessment system „DASY4“.

The measurements were made according to the 47 CFR § 2.1093 [47CFR] for evaluating compliance of mobile and portable devices with FCC limits for human exposure (general population) to radiofrequency emissions and IEEE 1528-2003 [IEEE1528-2003].

Additional information and guidelines given by the following FCC documents were used:

- SAR Measurement Requirements for 100 MHz to 6 GHz [KDB 865664 D01 v01r01]
- Mobile and Portable Devices RF Exposure Procedures and Equipment Authorization Policies [KDB 447498 D01 v05r01]

All measurements have been performed in accordance to the recommendations given by SPEAG.

## Compliance Statement

The Panasonic KX-TGDA20 cordless phone (FCC ID: ACJ96NKX-TGDA20) is in compliance with the following standards for uncontrolled exposure:

- 47 CFR § 2.1093 [47CFR]
- IEEE Std. C95.1 - 1999 [C95.1-1999],
- IEEE Std. C95.3 - 2002 [C95.3-2002],
- IEEE 1528-2003 [IEEE 1528-2003],
- The latest version of all relevant FCC OET KDB Procedures

Since the device does not provide a headset jack, SAR in body worn configuration are not conducted.

The maximum results of SAR for the KX-TGDA20 are as follows:

WORST CASE SAR RESULTS				
Phantom Configuration		Highest Reported SAR <sub>1g</sub> [W/kg]	SAR Limit [W/kg]	
HEAD	Left Cheek	0.043	1.6	PASS

prepared by:  .....

Alexander Rahn  
test engineer

reviewed by:  .....

André van den Bosch  
quality assurance engineer

## Table of Contents

<b>SUBJECT OF INVESTIGATION</b> .....	<b>5</b>
<b>1 FCC EXPOSURE CRITERIA</b> .....	<b>5</b>
1.1 <i>DISTINCTION BETWEEN EXPOSED POPULATION, DURATION OF EXPOSURE AND FREQUENCIES</i> .....	6
1.2 <i>DISTINCTION BETWEEN MAXIMUM PERMISSIBLE EXPOSURE AND SAR LIMITS</i> .....	6
<b>2 THE FCC MEASUREMENT PROCEDURE</b> .....	<b>7</b>
2.1 <i>GENERAL REQUIREMENTS</i> .....	7
2.2 <i>DEVICE OPERATING NEXT TO A PERSON'S EAR</i> .....	7
2.2.1 <i>PHANTOM REQUIREMENTS</i> .....	7
2.2.2 <i>TEST POSITIONS</i> .....	7
2.2.3 <i>TEST TO BE PERFORMED</i> .....	9
<b>3 BODY-WORN CONFIGURATIONS</b> .....	<b>10</b>
3.1 <i>PoC (PTT) POSITION</i> .....	11
3.2 <i>PHANTOM REQUIREMENTS</i> .....	11
3.3 <i>TEST TO BE PERFORMED</i> .....	11
3.3.1 <i>MEASUREMENT VARIABILITY</i> .....	11
<b>4 THE MEASUREMENT SYSTEM</b> .....	<b>12</b>
4.1 <i>PHANTOMS</i> .....	13
4.2 <i>E-FIELD-PROBES</i> .....	14
4.3 <i>MEASUREMENT PROCEDURE</i> .....	15
4.4 <i>UNCERTAINTY ASSESSMENT</i> .....	16
<b>5 OUTPUT POWER VALUES AND TUNE-UP INFORMATION</b> .....	<b>17</b>
<b>6 SAR RESULTS</b> .....	<b>18</b>
<b>7 APPENDIX</b> .....	<b>19</b>
7.1 <i>ADMINISTRATIVE DATA</i> .....	19
7.2 <i>DEVICE UNDER TEST AND TEST CONDITIONS</i> .....	19
7.3 <i>TISSUE RECIPES</i> .....	19
7.4 <i>MATERIAL PARAMETERS</i> .....	20
7.5 <i>SIMPLIFIED PERFORMANCE CHECKING</i> .....	20
7.6 <i>ENVIRONMENT</i> .....	23
7.7 <i>TEST EQUIPMENT</i> .....	23
7.8 <i>CERTIFICATES OF CONFORMITY</i> .....	25
7.9 <i>PICTURES OF THE DEVICE UNDER TEST</i> .....	27
7.10 <i>TEST POSITIONS FOR THE DEVICE UNDER TEST</i> .....	27
7.11 <i>PICTURES TO DEMONSTRATE THE REQUIRED LIQUID DEPTH</i> .....	28
<b>8 REFERENCES</b> .....	<b>29</b>

## Subject of Investigation

The KX-TGDA20 is a new cordless phone (Portable Device) from Panasonic operating in the 1920 MHz frequency range. The device has an integrated antenna and works in US DECT standard.



*Fig. 1: Pictures of the device under test.*

The objective of the measurements done by IMST was the dosimetric assessment of one device in a worst case setup in head configuration. Since there was a special test software available, SAR tests in DECT were conducted with a specific channel and maximum output power during the measurement. The examinations have been carried out with the dosimetric assessment system „DASY4“.

## 1 FCC Exposure Criteria

In the USA the FCC exposure criteria [KDB 865664] are based on the withdrawn IEEE Standard C95.1-1999 [IEEE C95.1-1999].

In this report the comparison between the FCC exposure limits and the measured data is made using the spatial peak SAR; the power level of the device under test guarantees that the whole body averaged SAR is not exceeded.

Having in mind a worst case consideration, the SAR limit is valid for uncontrolled environment and mobile respectively portable transmitters. According to Table 1 the SAR values have to be averaged over a mass of 1 g ( $SAR_{1g}$ ) with the shape of a cube.

RULE	SAR LIMIT [W/kg]
47 CFR § 2.1093 (d)(2)	1.6

*Table 1: Relevant spatial peak SAR limit averaged over a mass of 1 g.*

## 1.1 Distinction Between Exposed Population, Duration of Exposure and Frequencies

The American Standard [IEEE C95.1-1999] distinguishes between controlled and uncontrolled environment. Controlled environments are locations where there is exposure that may be incurred by persons who are aware of the potential for exposure as a concomitant of employment or by other cognizant persons. Uncontrolled environments are locations where there is the exposure of individuals who have no knowledge or control of their exposure. The exposures may occur in living quarters or workplaces. For exposure in controlled environments higher field strengths are admissible. In addition the duration of exposure is considered.

Due to the influence of frequency on important parameters, as the penetration depth of the electromagnetic fields into the human body and the absorption capability of different tissues, the limits in general vary with frequency.

## 1.2 Distinction between Maximum Permissible Exposure and SAR Limits

The biological relevant parameter describing the effects of electromagnetic fields in the frequency range of interest is the specific absorption rate SAR (dimension: power/mass). It is a measure of the power absorbed per unit mass. The SAR may be spatially averaged over the total mass of an exposed body or its parts. The SAR is calculated from the r.m.s. electric field strength  $E$  inside the human body, the conductivity  $\sigma$  and the mass density  $\rho$  of the biological tissue:

$$SAR = \sigma \frac{E^2}{\rho} = c \frac{\partial T}{\partial t} \Big|_{t \rightarrow 0+} \quad (1)$$

The specific absorption rate describes the initial rate of temperature rise  $\partial T / \partial t$  as a function of the specific heat capacity  $c$  of the tissue. A limitation of the specific absorption rate prevents an excessive heating of the human body by electromagnetic energy.

As it is sometimes difficult to determine the SAR directly by measurement (e.g. whole body averaged SAR), the standard specifies more readily measurable maximum permissible exposures in terms of external electric  $E$  and magnetic field strength  $H$  and power density  $S$ , derived from the SAR limits. The limits for  $E$ ,  $H$  and  $S$  have been fixed so that even under worst case conditions, the limits for the specific absorption rate SAR are not exceeded.

For the relevant frequency range the maximum permissible exposure may be exceeded if the exposure can be shown by appropriate techniques to produce SAR values below the corresponding limits.

## 2 The FCC Measurement Procedure

### 2.1 General Requirements

The test shall be performed in a laboratory with an environment which avoids influence on SAR measurements by ambient EM sources and any reflection from the environment itself. The ambient temperature shall be in the range of 20°C to 26°C and 30-70% humidity. All tests have been conducted according the latest version of all relevant KDBs.

### 2.2 Device Operating Next to a Person's Ear

#### 2.2.1 Phantom Requirements

The phantom is a simplified representation of the human anatomy and comprised of material with electrical properties similar to the corresponding tissues. The physical characteristics of the phantom model shall resemble the head and the neck of a user since the shape is a dominant parameter for exposure.

#### 2.2.2 Test Positions

As it cannot be expected that the user will hold the mobile phone exactly in one well defined position, different operational conditions shall be tested. The IEEE 1528-2003 [IEEE 1528] requires two test positions. For an exact description helpful geometrical definitions are introduced and shown in Fig. 2 - 3.

There are two imaginary lines on the mobile, the vertical centerline and the horizontal line. The vertical centerline passes through two points on the front side of the handset: the midpoint of the width  $w_t$  of the handset at the level of the acoustic output (point A on Fig. 2), and the midpoint of the width  $w_b$  of the bottom of the handset (point B). The horizontal line is perpendicular to the vertical centerline and passes through the center of the acoustic output (see Fig. 2). The two lines intersect at point A.

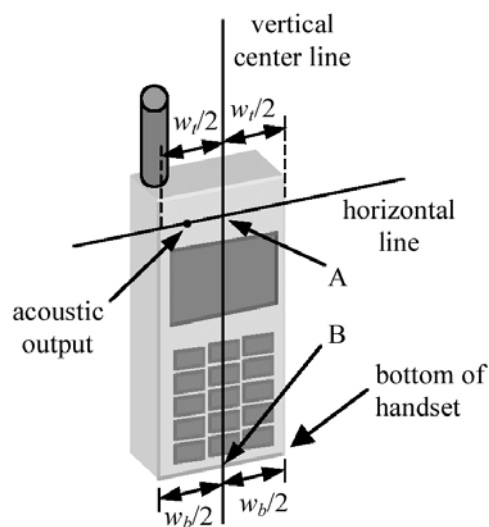
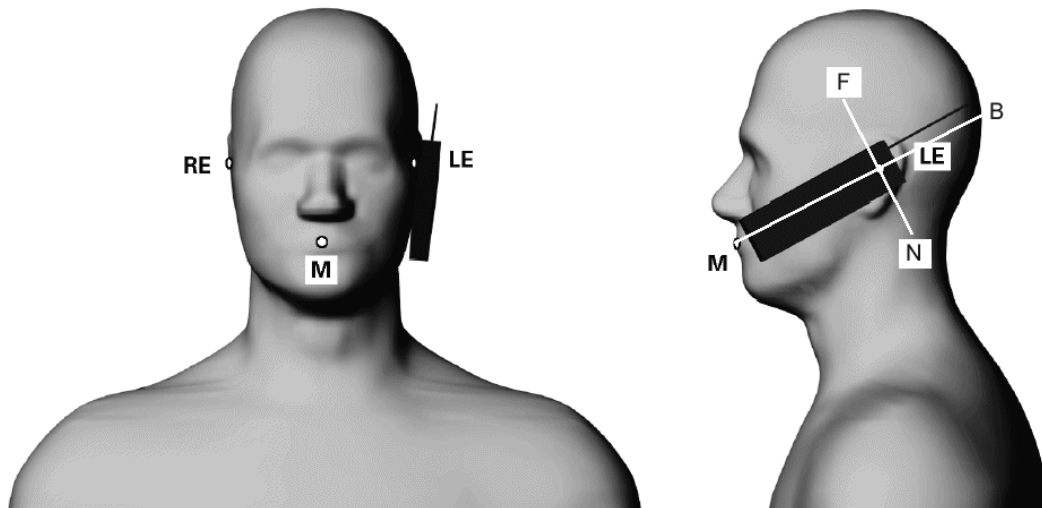


Fig. 2: Handset vertical and horizontal reference lines.

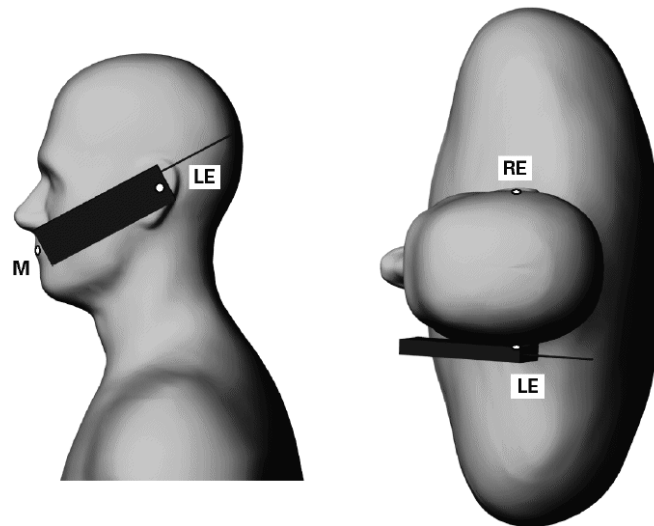


*Fig. 3: Phantom reference points.*

According to Fig. 3 the human head position is given by means of the following three reference points: auditory canal opening of both ears (RE and LE) and the center of the closed mouth (M). The ear reference points are 15 - 17 mm above the entrance to the ear canal along the BM line (back-mouth), as shown in Fig. 3. The plane passing through the two ear canals and M is defined as the reference plane. The line NF (Neck-Front) perpendicular to the reference plane and passing through the RE (or LE) is called the reference pivoting line. Line BM is perpendicular to the NF line. With this definitions the test positions are given by

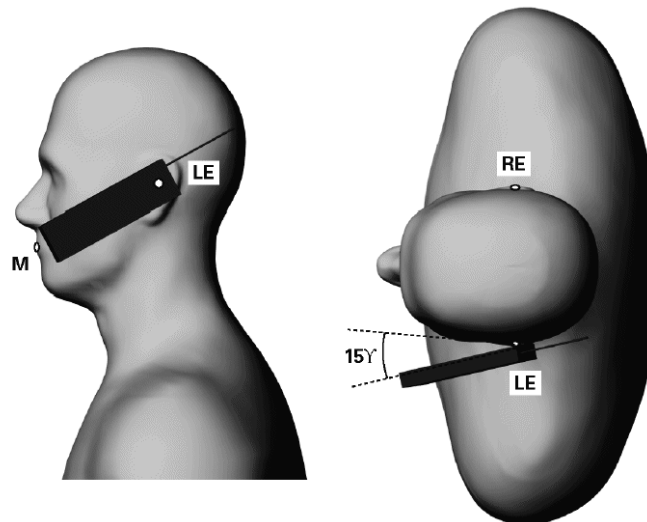
- **Cheek Position (see Fig. 4):**

Position the handset close to the surface of the phantom such that point A is on the (virtual) extension of the line passing through points RE and LE on the phantom (see Fig. 3), such that the plane defined by the vertical center line and the horizontal line of the phone is approximately parallel to the sagittal plane of the phantom. Translate the handset towards the phantom along the line passing through RE and LE until the handset touches the ear. While maintaining the handset in this plane, rotate it around the LE-RE line until the vertical centerline is in the plane normal to MB-NF including the line MB (called the reference plane). Rotate the phone around the vertical centerline until the phone (horizontal line) is symmetrical with respect to the line NF. While maintaining the vertical centerline in the reference plane, keeping point A on the line passing through RE and LE, and maintaining the phone contact with the ear, rotate the handset about the line NF until any point on the handset is in contact with a phantom point below the ear.



*Fig. 4: The cheek position.*

- **Tilted Position (see Fig. 5):**



*Fig. 5: The tilted position.*

While maintaining the orientation of the phone retract the phone parallel to the reference plane far enough to enable a rotation of the phone by  $15^\circ$ . Rotate the phone around the horizontal line by  $15^\circ$ . While maintaining the orientation of the phone, move the phone parallel to the reference plane until any part of the phone touches the head. In this position, point A will be located on the line RE-LE.

### 2.2.3 Test to be Performed

The SAR test shall be performed with both phone positions described above, on the left and right side of the phantom. The device shall be measured for all modes operating when the device is next to the ear, even if the different modes operate in the same frequency band.

For devices with retractable antenna the SAR test shall be performed with the antenna fully extended and fully retracted. Other factors that may affect the exposure shall also be tested. For example, optional antennas or optional battery packs which may significantly change the volume, lengths, flip open/closed, etc. of the device, or any other accessories

which might have the potential to considerably increase the peak spatial-average SAR value.

The SAR test shall be performed at the high, middle and low frequency channels of each operating mode. If the SAR measured at the middle channel for each test configuration is at least 3.0 dB lower than the SAR limit, testing at the high and low channels is optional.

### 3 Body-Worn Configurations

Body-worn operating configurations are tested with the belt-clips and holsters attached to the device and positioned against a flat phantom in a normal use configuration. Per FCC KDB 648474 [KDB 648474], Body-worn accessory exposure is typically related to voice mode operations when handsets are carried in body-worn accessories. The body-worn accessory procedures in KDB 447498 [KDB 447498] should be used to test for body-worn accessory SAR compliance, without a headset connected to it. This enables the test results for such configuration to be compatible with that required for hotspot mode when the body worn accessory test separation distance is greater than or equal to that required for hotspot mode, when applicable. When the reported SAR for body worn accessory, measured without headset connected to the handset, is  $> 1.2$  W/kg, the highest reported SAR configuration for that wireless mode and frequency band should be repeated for that body worn accessory with a headset attached to the handset.

For purpose of determining test requirements, accessories may be divided into two categories: those that do not contain metallic components and those that do. For multiple accessories that do not contain metallic components, the device may be tested only with that accessory which provides the closest spacing to the body.

For multiple accessories that contain metallic components, the device must be tested with each accessory that contains a unique metallic component. If multiple accessories share an identical metallic component, only the accessory that provides the closest spacing to the body must be tested.

Devices that are designed to operate on the body of users using lanyards and straps, or without requiring additional body worn accessories, must be tested for SAR compliance using a conservative minimum test separation distance  $\leq 5$  mm to support compliance. Nevertheless, all accessories that contain metallic components must be tested for compliance additionally.

Other separation distances may be used, but they shall not exceed 2.5 cm.

### 3.1 PoC (PTT) Position

The PoC (PTT) configurations shall be tested with the front of the device positioned at 25 mm from a flat phantom (display towards the phantom).

### 3.2 Phantom Requirements

For body-worn and other configurations a flat phantom shall be used which is comprised of material with electrical properties similar to the corresponding tissues.

### 3.3 Test to be Performed

For devices with retractable antenna the SAR test shall be performed with the antenna fully extended and fully retracted. Other factors that may affect the exposure shall also be tested. For example, optional antennas or optional battery packs which may significantly change the volume, lengths, flip open/closed, etc. of the device, or any other accessories which might have the potential to considerably increase the peak spatial-average SAR value.

The SAR test shall be performed at the high, middle and low frequency channels of each operating mode. If the SAR measured at the middle channel resp. that channel with the highest output power for each test configuration is  $< 0.4$  W/kg, testing at the high and low channels is optional.

#### 3.3.1 Measurement Variability

According KDB 865664 repeated measurements are required only when the measured SAR is  $\geq 0.80$  W/kg. If the measured SAR value of the initial repeated measurement is  $< 1.45$  W/kg with  $\leq 20\%$  variation, only one repeated measurement is required to reaffirm that the results are not expected to have substantial variations, which may introduce significant compliance concerns. A second repeated measurement is required only if the measured result for the initial repeated measurement is within 10% of the SAR limit and vary by more than 20%, which are often related to device and measurement setup difficulties. The following procedures are applied to determine if repeated measurements are required.

- 1) Repeated measurement is not required when the original highest measured SAR is  $< 0.80$  W/kg; steps 2) through 4) do not apply.
- 2) When the original highest measured SAR is  $\geq 0.80$  W/kg, repeat that measurement once.
- 3) Perform a second repeated measurement only if the ratio of largest to smallest SAR for the original and first repeated measurements is  $> 1.20$  or when the original or repeated measurement is  $\geq 1.45$  W/kg (~ 10% from the 1-g SAR limit).
- 4) Perform a third repeated measurement only if the original, first or second repeated measurement is  $\geq 1.5$  W/kg and the ratio of largest to smallest SAR for the original, first and second repeated measurements is  $> 1.20$ .

## 4 The Measurement System

DASY is an abbreviation of „Dosimetric Assessment System“ and describes a system that is able to determine the SAR distribution inside a phantom of a human being according to different standards. The DASY4 system consists of the following items as shown in Fig: 6. Additional Fig: 7 show the equipment, similar to the installations in other laboratories.

- Fully compliant with all current measurement standards as stated in Fig. 9
- High precision robot with controller
- Measurement server (for surveillance of the robot operation and signal filtering)
- Data acquisition electronics DAE (for signal amplification and filtering)
- Field probes calibrated for use in liquids
- Electro-optical converter EOC (conversion from the optical into a digital signal)
- Light beam (improving of the absolute probe positioning accuracy)
- Two SAM phantoms filled with tissue simulating liquid
- DASY4 software
- SEMCAD

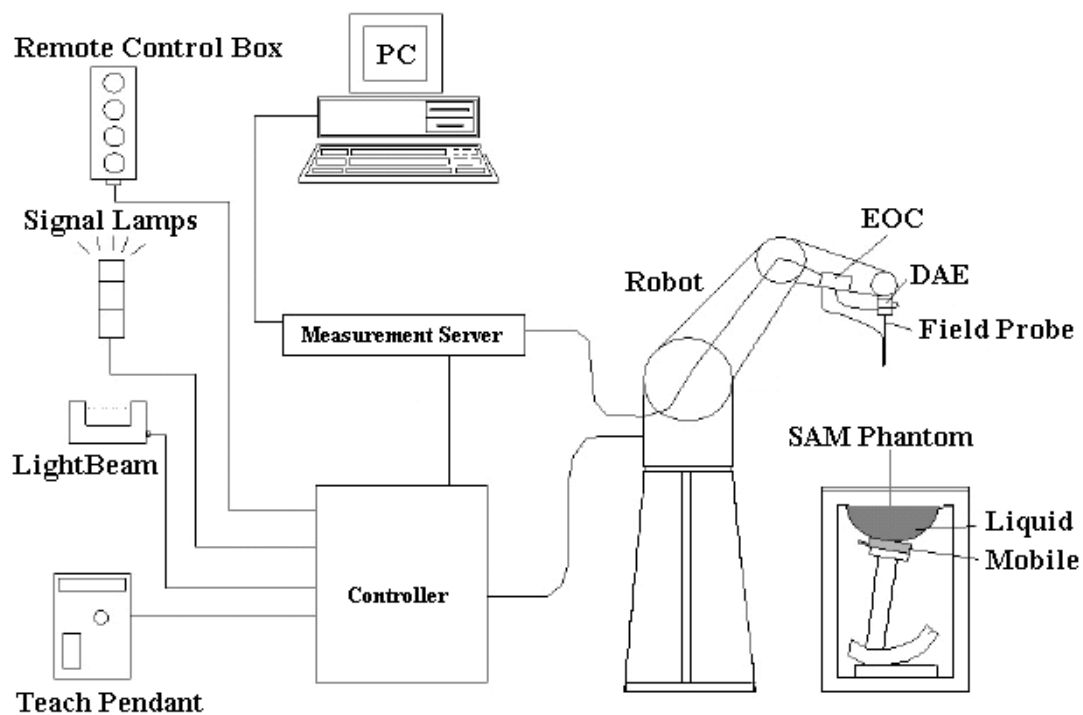


Fig. 6: The DASY4 measurement system.

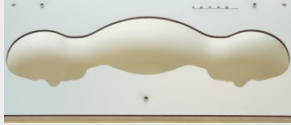


*Fig. 7: The measurement set-up with two SAM phantoms containing tissue simulating liquid.*

The mobile phone operating at the maximum power level is placed by a non metallic device holder (delivered from Schmid & Partner) in the above described positions at a shell phantom of a human being. The distribution of the electric field strength  $E$  is measured in the tissue simulating liquid within the shell phantom. For this miniaturised field probes with high sensitivity and low field disturbance are used. Afterwards the corresponding SAR values are calculated with the known electrical conductivity  $\sigma$  and the mass density  $\rho$  of the tissue in the SEMCAD FDTD software. The software is able to determine the averaged SAR values (averaging region 1 g or 10 g) for compliance testing.

The measurements are done by two scans: first a coarse scan determines the region of the maximum SAR, afterwards the averaged SAR is measured in a second scan within the shape of a cube. The measurement time takes about 20 minutes.

#### 4.1 Phantoms

TWIN SAM PHANTOM V4.0	
	Specific Anthropomorphic Mannequin defined in IEEE 1528 and IEC 62209-1 and delivered by Schmid & Partner Engineering AG. It enables the dosimetric evaluation of left and right hand phone usage as well as body mounted usage at the flat phantom region. The details and the Certificate of conformity can be found in Fig. 10.
<b>Shell Thickness</b>	$2 \pm 0.2$ mm ( $6 \pm 0.2$ mm at ear point)
<b>Dimensions</b>	Length: 1000 mm; Width: 500 mm Height: adjustable feet
<b>Filling Volume</b>	approx. 25 liters

## 4.2 E-Field-Probes

For the measurements the Dosimetric E-Field Probes ET3DV6R or EX3DV4 with following specifications are used. They are manufactured and calibrated in accordance with FCC [OET 65] and IEEE [IEEE 1528-2003] recommendations annually by Schmid & Partner Engineering AG.

ET3DV6R	
<b>Construction</b>	Symmetrical design with triangular core Built-in optical fiber for surface detection system (ET3DV6 only) Built-in shielding against static charges PEEK enclosure material (resistant to organic solvents, e.g., DGBE)
<b>Dimensions</b>	Overall length: 337 mm (Tip: 16 mm) Tip diameter: 6.8 mm (Body: 12 mm) Distance from probe tip to dipole centers: 2.7 mm
<b>Frequency</b>	10 MHz to 2.3 GHz Linearity: $\pm 0.2$ dB (30 MHz to 2.3 GHz)
<b>Directivity</b>	Axial isotropy: $\pm 0.2$ dB in TSL (rotation around probe axis) Spherical isotropy: $\pm 0.4$ dB in TSL (rotation normal to probe axis)
<b>Dynamic Range</b>	5 $\mu$ W/g to > 100 mW/g; Linearity: $\pm 0.2$ dB
<b>Calibration Range</b>	450 MHz / 750 MHz / 900 MHz / 1750 MHz / 1900 MHz / 1950 MHz for head and body simulating liquid

EX3DV4	
<b>Construction</b>	Symmetrical design with triangular core Built-in shielding against static charges PEEK enclosure material (resistant to organic solvents, e.g., DGBE)
<b>Dimensions</b>	Overall length: 337 mm (Tip: 20 mm) Tip diameter: 2.5 mm (Body: 12 mm) Typical distance from probe tip to dipole centers: 1 mm
<b>Frequency</b>	10 MHz to > 6 GHz Linearity: $\pm 0.2$ dB (30 MHz to 6 GHz)
<b>Directivity</b>	Axial isotropy: $\pm 0.3$ dB in TSL (rotation around probe axis) Spherical isotropy: $\pm 0.5$ dB in TSL (rotation normal to probe axis)
<b>Dynamic Range</b>	10 $\mu$ W/g to > 100 mW/g Linearity: $\pm 0.2$ dB (noise: typically < 1 $\mu$ W/g)
<b>Calibration Range</b>	1950 MHz / 2450 MHz / 2600 MHz / 3500 MHz / 5200 MHz / 5300 MHz / 5600 MHz / 5800 MHz for head and body simulating liquid

### 4.3 Measurement Procedure

The following steps are used for each test position:

- Establish a call with the maximum output power with a base station simulator. The connection between the mobile phone and the base station simulator is established via air interface.
- Measurement of the local E-field value at a fixed location (P1). This value serves as a reference value for calculating a possible power drift.
- Measurement of the SAR distribution with resolution settings for area scan and zoom scan according KDB 865664 D01 as shown in Table 2.
- The used extrapolation and interpolation routines are all based on the modified Quadratic Shepard's method [DASY4].
- Repetition of the E-field measurement at the fixed location (P1) and repetition of the whole procedure if the two results differ by more than  $\pm 0.21\text{dB}$ .

		$\leq 3\text{ GHz}$	$\geq 3\text{ GHz}$
Maximum distance from closest measurement point (geometric center of probe sensors) to phantom surface		$5 \pm 1\text{ mm}$	$\frac{1}{2} \cdot \delta \cdot \ln(2) \pm 0.5\text{ mm}$
Maximum probe angle from probe axis to phantom surface normal at the measurement location		$30^\circ \pm 1^\circ$	$20^\circ \pm 1^\circ$
Maximum area scan spatial resolution: $\Delta X_{\text{Area}}, \Delta Y_{\text{Area}}$		$\leq 2\text{ GHz}: \leq 15\text{ mm}$ $2 - 3\text{ GHz}: \leq 12\text{ mm}$	$3 - 4\text{ GHz}: \leq 12\text{ mm}$ $4 - 6\text{ GHz}: \leq 10\text{ mm}$
		When the x or y dimension of the test device, in the measurement plane orientation, is smaller than the above, the measurement resolution must be $\leq$ the corresponding x or y dimension of the test device with at least one measurement point on the test device.	
Maximum zoom scan spatial resolution: $\Delta X_{\text{Zoom}}, \Delta Y_{\text{Zoom}}$		$\leq 2\text{ GHz}: \leq 8\text{ mm}$ $2 - 3\text{ GHz}: \leq 5\text{ mm}^*$	$3 - 4\text{ GHz}: \leq 5\text{ mm}^*$ $4 - 6\text{ GHz}: \leq 4\text{ mm}^*$
Maximum zoom scan spatial resolution, normal to phantom surface	Uniform grid: $\Delta Z_{\text{Zoom}}(n)$	$\leq 5\text{ mm}$	$3 - 4\text{ GHz}: \leq 4\text{ mm}$ $4 - 5\text{ GHz}: \leq 3\text{ mm}$ $5 - 6\text{ GHz}: \leq 2\text{ mm}$
	graded grid	$\Delta Z_{\text{Zoom}}(1)$ : between 1 <sup>st</sup> two points closest to phantom surface	$\leq 4\text{ mm}$
		$\Delta Z_{\text{Zoom}}(n>1)$ : between subsequent points	$\leq 1.5 \cdot \Delta Z_{\text{Zoom}}(n-1)$
Minimum zoom scan volume	x, y, z	$\geq 30\text{ mm}$	$3 - 4\text{ GHz}: \geq 28\text{ mm}$ $4 - 5\text{ GHz}: \geq 25\text{ mm}$ $5 - 6\text{ GHz}: \geq 22\text{ mm}$
<p>Note: <math>\delta</math> is the penetration depth of a plane-wave at normal incidence to the tissue medium: see draft standard IEEE P1528-2011 for details.</p> <p>* When zoom scan is required and the reported SAR from the area scan based 1-g SAR estimation procedures of KDB 447498 is <math>\leq 1.4\text{ W/kg}</math>, <math>\leq 8\text{ mm}</math>, <math>\leq 7\text{ mm}</math> and <math>\leq 5\text{ mm}</math> zoom scan resolution may be applied, respectively, for 2 GHz to 3 GHz, 3 GHz to 4 GHz and 4 GHz to 6 GHz</p>			

Table 2: Parameters for SAR scan procedures.

#### 4.4 Uncertainty Assessment

Table 3 includes the worst case uncertainty budget suggested by the [IEEE 1528-2003] and determined by Schmid & Partner Engineering AG. The expanded uncertainty (K=2) is assessed to be  $\pm 21.7\%$  and is valid up to 3.0 GHz.

Error Sources	Uncertainty Value	Probability Distribution	Divisor	$c_i$	Standard Uncertainty	$v_i^2$ or $v_{eff}$
<b>Measurement System</b>						
Probe calibration	$\pm 5.9\%$	Normal	1	1	$\pm 5.9\%$	$\infty$
Axial isotropy	$\pm 4.7\%$	Rectangular	$\sqrt{3}$	0.7	$\pm 1.9\%$	$\infty$
Hemispherical isotropy	$\pm 9.6\%$	Rectangular	$\sqrt{3}$	0.7	$\pm 3.9\%$	$\infty$
Boundary effects	$\pm 1.0\%$	Rectangular	$\sqrt{3}$	1	$\pm 0.6\%$	$\infty$
Linearity	$\pm 4.7\%$	Rectangular	$\sqrt{3}$	1	$\pm 2.7\%$	$\infty$
System detection limit	$\pm 1.0\%$	Rectangular	$\sqrt{3}$	1	$\pm 0.6\%$	$\infty$
Readout electronics	$\pm 1.0\%$	Normal	1	1	$\pm 1.0\%$	$\infty$
Response time	$\pm 0.8\%$	Rectangular	$\sqrt{3}$	1	$\pm 0.5\%$	$\infty$
Integration time	$\pm 2.6\%$	Rectangular	$\sqrt{3}$	1	$\pm 1.5\%$	$\infty$
RF ambient conditions	$\pm 3.0\%$	Rectangular	$\sqrt{3}$	1	$\pm 1.7\%$	$\infty$
Probe positioner	$\pm 0.4\%$	Rectangular	$\sqrt{3}$	1	$\pm 0.2\%$	$\infty$
Probe positioning	$\pm 2.9\%$	Rectangular	$\sqrt{3}$	1	$\pm 1.7\%$	$\infty$
Algorithm for max SAR eval.	$\pm 1.0\%$	Rectangular	$\sqrt{3}$	1	$\pm 0.6\%$	$\infty$
<b>Test Sample Related</b>						
Device positioning	$\pm 2.9\%$	Normal	1	1	$\pm 2.9\%$	145
Device holder	$\pm 3.6\%$	Normal	1	1	$\pm 3.6\%$	5
Power drift	$\pm 5.0\%$	Rectangular	$\sqrt{3}$	1	$\pm 2.9\%$	$\infty$
<b>Phantom and Set-up</b>						
Phantom uncertainty	$\pm 4.0\%$	Rectangular	$\sqrt{3}$	1	$\pm 2.3\%$	$\infty$
Liquid conductivity (target)	$\pm 5.0\%$	Rectangular	$\sqrt{3}$	0.64	$\pm 1.8\%$	$\infty$
Liquid conductivity (meas.)	$\pm 2.5\%$	Normal	1	0.64	$\pm 1.6\%$	$\infty$
Liquid permittivity (target)	$\pm 5.0\%$	Rectangular	$\sqrt{3}$	0.6	$\pm 1.7\%$	$\infty$
Liquid permittivity (meas.)	$\pm 2.5\%$	Normal	1	0.6	$\pm 1.5\%$	$\infty$
<b>Combined Uncertainty</b>					$\pm 10.8\%$	

Table 3: Uncertainty budget of DASY4.

## 5 Output Power Values and Tune-Up Information

AVERAGE MEASURED AND MAXIMUM TRANSMIT OUTPUT POWER VALUES [dBm]				
Mode	Freq. [MHz]	CH	Measured Output Power	Tune-Up Limit
DECT	1921.536	00	19.7	19.7
	1924.992	02	19.6	19.6
	1928.448	04	19.6	19.6

Table 4: Conducted output power and maximum transmit power values for Panasonic KX-TGDA20 for US DECT.

## 6 SAR Results

The table below contains the measured SAR values averaged over a mass of 1 g. SAR assessment was conducted in the worst case configuration with output power values according Table 4.

According KDB 447498 D01 V05, the reported SAR is the measured SAR value adjusted for maximum tune-up tolerance.

- Scaling Factor = tune-up limit power (mW) / RF power (mW)
- Reported SAR = measured SAR \* scaling factor

Furthermore, testing of other required channels within the operating mode of frequency band is not required when the reported SAR for the mid-band or highest output power channel is  $\leq 0.4$  W/kg for transmission band  $\geq 200$  MHz.

SAR MEASUREMENT RESULTS IN HEAD CONFIGURATION												
Freq. [MHz]	CH	Head Phantom Config.		Fig No.	Measured SAR <sub>1a</sub> [W/kg]	Power Drift [dB]	Output Power [dBm]	Tune Up Limit [dBm]	Scaling Factor	Reported SAR <sub>1a</sub> [W/kg]	Plot No.	
DECT	1924.99	02	Left	Cheek	12	0.043	0.115	19.6	19.6	1	0.043	1
				Tilted	13	0.030	-0.166				0.030	2
			Right	Cheek	14	0.042	-0.108				0.042	3
				Tilted	15	0.032	-0.122				0.032	4

Table 5: Measurement results in head configuration for Panasonic KX-TGDA20.

Since the measured max SAR is  $< 0.8$  W/kg measurement variability assessment according KDB 865664 is not applicable.

To control the output power stability during the SAR test the used DASY4 system calculates the power drift by measuring the e-field at the same location at the beginning and at the end of the measurement for each test position. These drift values can be found in the above tables labeled as: (Drift[dB]). This ensures that the power drift during one measurement is within 5%.

## 7 Appendix

### 7.1 Administrative Data

Date of Validation: December 06, 2013  
 Date of Measurement: December 06, 2013  
 Data Stored: Nemko\_60320\_6130421  
 Contact: IMST GmbH  
 Carl-Friedrich-Gauß-Str. 2  
 D-47475 Kamp-Lintfort, Germany  
 Tel.: +49- 2842-981 378  
 Fax: +49- 2842-981 399  
 email: vandenBosch@imst.de

### 7.2 Device under Test and Test Conditions

MTE: Panasonic KX-TGDA20  
 Date of Receipt: December 04, 2013  
 SN: N.A.  
 FCC ID: ACJ96NKX-TGDA20  
 Equipment Class: Portable device  
 RF Exposure Environment: General Population/ Uncontrolled  
 Power Supply: Internal Battery  
 Antenna: integrated  
 Used Accessory: N.A.  
 Measured Standards: US DECT (1924.992 MHz)  
 Method to Establish a Call: Test software  
 TX Range: DECT: 1921.536 MHz – 1928.448 MHz  
 RX Range: DECT: 1921.536 MHz – 1928.448 MHz  
 Used TX Channels: DECT: low: ch 0 center: ch 2, high: ch 4  
 Used Phantom: SAM Twin Phantom V4.0, as defined by the IEEE SCC-34/SC2 group and delivered by Schmid & Partner Engineering AG

Panasonic KX-TGDA20	TX Range [MHz]	RX Range [MHz]	Used Channels	Used Crest Factor
US DECT	1921.536 - 1928.448	1921.536 - 1928.448	02	24

Table 6: Used channels and crest factors during the test.

### 7.3 Tissue Recipes

The following recipes are provided in percentage by weight.

1900 MHz, Head: 45.65% Diethylenglykol-monobutylether  
 54.00% De-Ionized Water  
 0.35% Salt

## 7.4 Material Parameters

For the measurement of the following parameters the HP 85070B dielectric probe kit is used, representing the open-ended coaxial probe measurement procedure. The measured values should be within  $\pm 5\%$  of the recommended values given by the FCC.

Frequency		$\epsilon_r$	$\sigma$ [S/m]	Temperature	
				Ambient [ C]	Liquid [° C]
1900 MHz Head	Recommended Value	$40.00 \pm 2.00$	$1.40 \pm 0.07$	20.0 - 26.0	-
	Measured Value (Validation)	40.80	1.42	21.7	21.4
	Measured Value (CH 2)	40.80	1.45	21.5	21.4

Table 7: Parameters of the tissue simulating liquids.

## 7.5 Simplified Performance Checking

The simplified performance check was realized using the dipole validation kits. The input power of the dipole antennas were 250 mW (cw signal) and they were placed under the flat part of the SAM phantom. The target and measured results are listed in the table 8 - 9 and shown in figure 8. The target values were adopted from the calibration certificates which are attached in the appendix. Table 10 includes the uncertainty assessment for the system performance checking which was suggested by the [IEEE 1528-2003] and determined by Schmid & Partner Engineering AG. The expanded uncertainty (K=2) is assessed to be  $\pm 16.8\%$ . To justify the two year calibration interval of the used validation dipoles, IMST consider the requirements in 3.2.2 of KDB 865664. The result of the annual SAR target, impedance and return loss assessment, conducted by IMST, show no significant deviation to dipole calibration results.

Available Dipoles		SAR <sub>1g</sub> [W/kg]	$\epsilon_r$	$\sigma$ [S/m]
D1900V2, SN #5d051	Target Values Head	9.80	41.40	1.43

Table 8: Dipole target results as given by the calibration certificates.

Used Dipoles		SAR <sub>1g</sub> [W/kg]	$\epsilon_r$	$\sigma$ [S/m]
1900 MHz, SN #5d051	Measured Values Head	10.10	40.80	1.42

Table 9: Dipole measured validation results.

Test Laboratory: Imst GmbH, DASY Yellow (II); File Name: [061213\\_y\\_1669.da4](#)

DUT: Dipole 1900 MHz SN: 5d051; Type: D1900V2; Serial: D1900V2 - SN5d051

Program Name: System Performance Check at 1900 MHz

Communication System: CW; Frequency: 1900 MHz; Duty Cycle: 1:1

Medium parameters used:  $f = 1900$  MHz;  $\sigma = 1.42$  mho/m;  $\epsilon_r = 40.8$ ;  $\rho = 1000$  kg/m<sup>3</sup>

Phantom section: Flat Section

DASY4 Configuration:

- Probe: ET3DV6R - SN1669; ConvF(5.05, 5.05, 5.05); Calibrated: 19.02.2013
- Sensor-Surface: 4mm (Mechanical Surface Detection)
- Electronics: DAE4 Sn631; Calibrated: 23.09.2013
- Phantom: SAM Glycol 1340; Type: QD 000 P40 CB; Serial: TP-1340
- Measurement SW: DASY4, V4.7 Build 80; Postprocessing SW: SEMCAD, V1.8 Build 186

**d=10mm, Pin=250mW/Area Scan (7x7x1):** Measurement grid: dx=10mm, dy=10mm

Maximum value of SAR (measured) = 11.5 mW/g

**d=10mm, Pin=250mW/Zoom Scan (7x7x7)/Cube 0:** Measurement grid: dx=5mm, dy=5mm, dz=5mm

Reference Value = 94.8 V/m; Power Drift = 0.027 dB

Peak SAR (extrapolated) = 17.5 W/kg

**SAR(1 g) = 10.1 mW/g; SAR(10 g) = 5.23 mW/g**

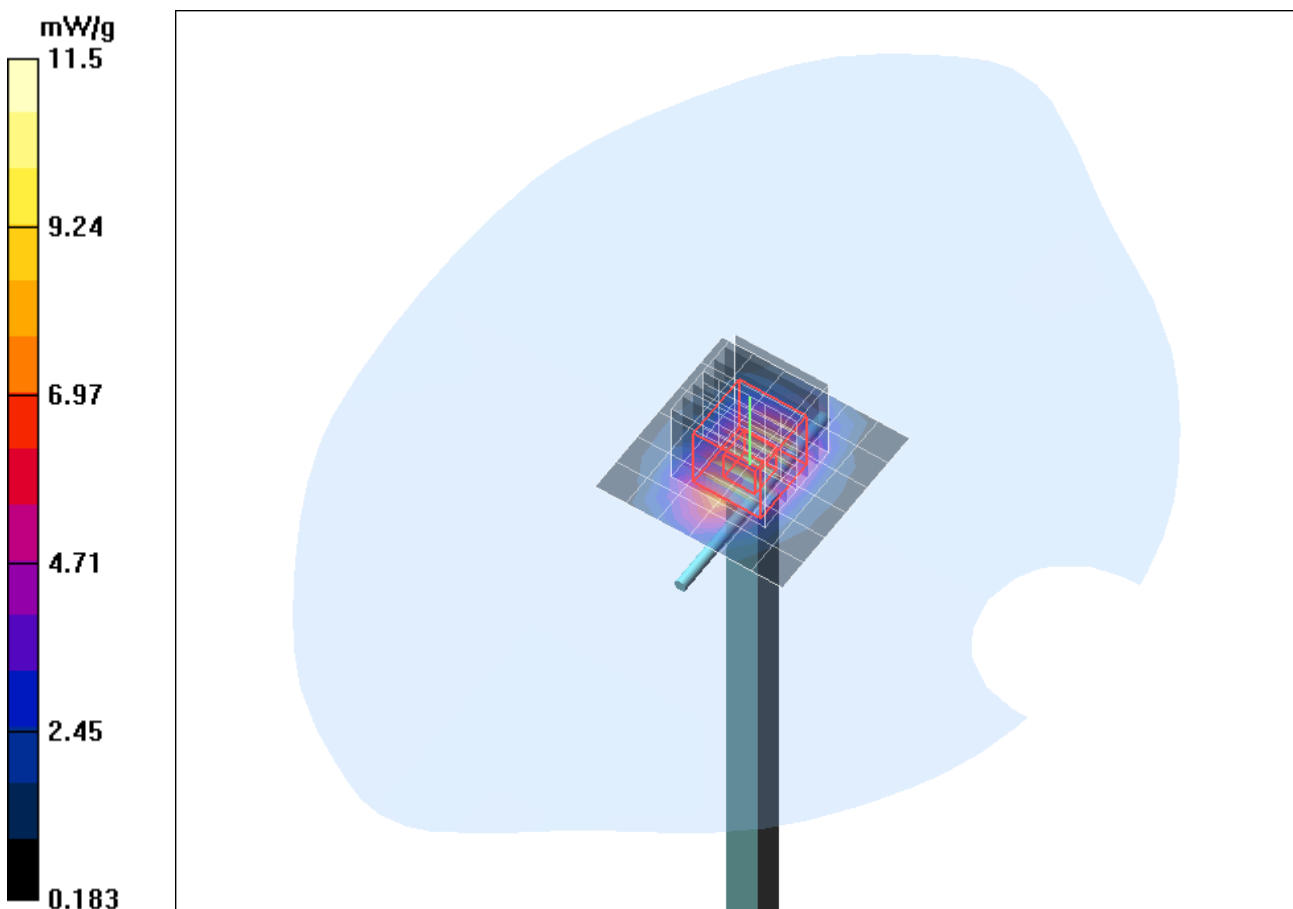


Fig. 8: Validation measurement 1900 MHz Head (December 06, 2013), coarse grid.

Error Sources	Uncertainty Value	Probability Distribution	Divisor	$c_i$	Standard Uncertainty	$v_i^2$ or $v_{eff}$
<b>Measurement System</b>						
Probe calibration	± 5.9 %	Normal	1	1	± 5.9 %	∞
Axial isotropy	± 4.7 %	Rectangular	√3	1	± 2.7 %	∞
Hemispherical isotropy	± 0 %	Rectangular	√3	1	± 0 %	∞
Boundary effects	± 1.0 %	Rectangular	√3	1	± 0.6 %	∞
Linearity	± 4.7 %	Rectangular	√3	1	± 2.7 %	∞
System detection limit	± 1.0 %	Rectangular	√3	1	± 0.6 %	∞
Readout electronics	± 0.3 %	Normal	1	1	± 0.3 %	∞
Response time	± 0 %	Rectangular	√3	1	± 0 %	∞
Integration time	± 0%	Rectangular	√3	1	± 0 %	∞
RF ambient conditions	± 3.0 %	Rectangular	√3	1	± 1.7 %	∞
Probe positioner	± 0.4 %	Rectangular	√3	1	± 0.2 %	∞
Probe positioning	± 2.9 %	Rectangular	√3	1	± 1.7 %	∞
Algorithms for max SAR eval.	± 1.0 %	Rectangular	√3	1	± 0.6 %	∞
<b>Dipole</b>						
Dipole Axis to Liquid Distance	± 2.0 %	Rectangular	1	1	± 1.2 %	∞
Input power and SAR drift mea.	± 4.7 %	Rectangular	√3	1	± 2.7 %	∞
<b>Phantom and Set-up</b>						
Phantom uncertainty	± 4.0 %	Rectangular	√3	1	± 2.3 %	∞
Liquid conductivity (target)	± 5.0 %	Rectangular	√3	0.64	± 1.8 %	∞
Liquid conductivity (meas.)	± 2.5 %	Normal	1	0.64	± 1.6 %	∞
Liquid permittivity (target)	± 5.0 %	Rectangular	√3	0.6	± 1.7 %	∞
Liquid permittivity (meas.)	± 2.5 %	Normal	1	0.6	± 1.5 %	∞
<b>Combined Uncertainty</b>					± 9.2 %	

Table 10: Uncertainty budget for the system performance check.

## 7.6 Environment

To comply with the required noise level (less than 12 mW/kg) periodically measurements without a DUT were conducted.

Humidity: 40% ± 5 %

## 7.7 Test Equipment

Test Equipment	Model	Serial Number	Last Calibration	Next Calibration
<b>DASY4 Systems</b>				
Software Versions DASY4	V4.7	N/A	N/A	N/A
Software Versions SEMCAD	V1.8	N/A	N/A	N/A
Dosimetric E-Field Probe	ET3DV6R	1669	03/2013	03/2014
Data Acquisition Electronics	DAE 4	631	09/2013	09/2014
Phantom	SAM	1059	N/A	N/A
Phantom	SAM	1176	N/A	N/A
Phantom	SAM	1340	N/A	N/A
Phantom	SAM	1341	N/A	N/A
<b>Dipoles</b>				
Validation Dipole	D1900V2	5d051	09/2013	09/2015
<b>Material Measurement</b>				
Network Analyzer	E5071C	MY46103220	07/2013	07/2015
Dielectric Probe Kit	HP85070B	US33020263	N/A	N/A

Table 11: SAR equipment.

Test Equipment	Model	Serial Number	Last Calibration	Next Calibration
<b>Power Meters</b>				
Power Meter, Agilent	E4416A	GB41050414	12/2012	12/2014
Power Meter, Agilent	E4417A	GB41050441	12/2012	12/2014
Power Meter, Anritsu	ML2487A	6K00002319	02/2012	02/2014
Power Meter, Anritsu	ML2488A	6K00002078	02/2012	02/2014
<b>Power Sensors</b>				
Power Sensor, Agilent	E9301H	US40010212	12/2012	12/2014
Power Sensor, Agilent	E9301A	MY41495584	12/2012	12/2014
Power Sensor, Anritsu	MA2481B	031600	02/2012	02/2014
Power Sensor, Anritsu	MA2490A	031565	02/2012	02/2014
<b>RF Sources</b>				
Network Analyzer	E5071C	MY46103220	07/2013	07/2015
Rohde & Schwarz	SME300	100142	N/A	N/A
<b>Amplifiers</b>				
Mini Circuits	ZHL-42	D012296	N/A	N/A
Mini Circuits	ZHL-42	D031104#01	N/A	N/A
Mini Circuits	ZVE-8G	D031004	N/A	N/A
<b>Radio Tester</b>				
Rohde & Schwarz	CMU200	835305/050	N/A	N/A

Table 12: Test equipment, General.

## 7.8 Certificates of Conformity

Schmid &amp; Partner Engineering AG

**s p e a g**

Zeughausstrasse 43, 8004 Zurich, Switzerland  
 Phone +41 44 245 9700, Fax +41 44 245 9779  
 info@speag.com, http://www.speag.com

### Certificate of conformity

Item	Dosimetric Assessment System DASY4
Type No	SD 000 401A, SD 000 402A
Software Version No	DASY 4.7
Manufacturer / Origin	Schmid & Partner Engineering AG Zeughausstrasse 43, CH-8004 Zürich, Switzerland

### References

- [1] IEEE 1528-2003, "Recommended Practice for Determining the Peak Spatial-Average Specific Absorption Rate (SAR) in the Human Head from Wireless Communications Devices: Measurement Techniques, December 2003
- [2] EN 50361:2001, "Basic standard for the measurement of Specific Absorption Rate related to human exposure to electromagnetic fields from mobile phones (300 MHz – 3 GHz)", July 2001
- [3] IEC 62209 – 1, "Specific Absorption Rate (SAR) in the frequency range of 300 MHz to 3 GHz – Measurement Procedure, Part 1: Hand-held mobile wireless communication devices", February 2005
- [4] IEC 62209 – 2, Draft Version 0.9, "Evaluation of Human Exposure to Radio Frequency Fields from Handheld and Body-Mounted Wireless Communication Devices in the Frequency Range of 30 MHz to 6 GHz: Human models, Instrumentation and Procedures Part 2: Procedure to determine the Specific Absorption Rate (SAR) for ... including accessories and multiple transmitters", December 2004
- [5] OET Bulletin 65, Supplement C, "Evaluating Compliance with FCC Guidelines for Human Exposure to Radiofrequency Electromagnetic Fields", Edition 01-01
- [6] ANSI-C63.19-2006, "American National Standard for Methods of Measurement of Compatibility between Wireless Communication Devices and Hearing Aids", June 2006
- [7] ANSI-C63.19-2007, "American National Standard for Methods of Measurement of Compatibility between Wireless Communication Devices and Hearing Aids", June 2007

### Conformity

We certify that this system is designed to be fully compliant with the standards [1 – 7] for RF emission tests of wireless devices.

### Uncertainty

The uncertainty of the measurements with this system was evaluated according to the above standards and is documented in the applicable chapters of the DASY4 system handbook.

The uncertainty values represent current state of methodology and are subject to changes. They are applicable to all laboratories using DASY4 provided the following requirements are met (responsibility of the system end user):

- 1) the system is used by an experienced engineer who follows the manual and the guidelines taught during the training provided by SPEAG,
- 2) the probe and validation dipoles have been calibrated for the relevant frequency bands and media within the requested period,
- 3) the DAE has been calibrated within the requested period,
- 4) the "minimum distance" between probe sensor and inner phantom shell and the radiation source is selected properly,
- 5) the system performance check has been successful,
- 6) the operational mode of the DUT is CW, CDMA, FDMA or TDMA (GSM, DCS, PCS, IS136, PDC) and the measurement/integration time per point is  $\geq 500$  ms,
- 7) if applicable, the probe modulation factor is evaluated and applied according to field level, modulation and frequency,
- 8) the dielectric parameters of the liquid are conformant with the standard requirement,
- 9) the DUT has been positioned as described in the manual.
- 10) the uncertainty values from the calibration certificates, and the laboratory and measurement equipment dependent uncertainties, are updated by end user accordingly.

Date 24.4.2008

Signature / Stamp

Doc No 880 – SD00040XA-Standards\_0804 – F

KP/FB

Page 1 (1)

Fig. 9: Certificate of conformity for the used DASY4 system:

## Schmid & Partner Engineering AG

Zeughausstrasse 43, 8004 Zurich, Switzerland, Phone +41 1 245 97 00, Fax +41 1 245 97 79

### Certificate of conformity / First Article Inspection

Item	SAM Twin Phantom V4.0
Type No	QD 000 P40 BA
Series No	TP-1002 and higher
Manufacturer / Origin	Untersee Composites Hauptstr. 69 CH-8559 Fruthwilen Switzerland

#### Tests

The series production process used allows the limitation to test of first articles. Complete tests were made on the pre-series Type No. QD 000 P40 AA, Serial No. TP-1001 and on the series first article Type No. QD 000 P40 BA, Serial No. TP-1006. Certain parameters have been retested using further series units (called samples).

Test	Requirement	Details	Units tested
Shape	Compliance with the geometry according to the CAD model.	IT'IS CAD File (*)	First article, Samples
Material thickness	Compliant with the requirements according to the standards	2mm +/- 0.2mm in specific areas	First article, Samples
Material parameters	Dielectric parameters for required frequencies	200 MHz – 3 GHz Relative permittivity < 5 Loss tangent < 0.05.	Material sample TP 104-5
Material resistivity	The material has been tested to be compatible with the liquids defined in the standards	Liquid type HSL 1800 and others according to the standard.	Pre-series, First article

#### Standards

- [1] CENELEC EN 50361
- [2] IEEE P1528-200x draft 6.5
- [3] IEC PT 62209 draft 0.9
- (\*) The IT'IS CAD file is derived from [2] and is also within the tolerance requirements of the shapes of [1] and [3].

#### Conformity

Based on the sample tests above, we certify that this item is in compliance with the uncertainty requirements of SAR measurements specified in standard [1] and draft standards [2] and [3].

Date 18.11.2001

Signature / Stamp



**Schmid & Partner  
Engineering AG**

Zeughausstrasse 43, CH-8004 Zurich  
Tel. +41 1 245 97 00, Fax +41 1 245 97 79



Fig. 10: Certificate of conformity for the used SAM phantom.

### 7.9 Pictures of the Device under Test

Figure 11 shows the device under test.



*Fig. 11: Pictures of the device under test.*

### 7.10 Test Positions for the Device under Test

Figure 12 - 15 show the test positions for the SAR measurements.



*Fig. 12: Cheek position, left side.*



*Fig. 13: Tilted position, left side.*



*Fig. 14: Cheek position, right side.*



*Fig. 15: Tilted position, right side.*

### 7.11 Pictures to Demonstrate the Required Liquid Depth

Figure 16 shows the liquid depth in the used SAM phantom.



*Fig. 16: Liquid depth for 1900 MHz Head measurements*

## 8 References

- [OET 65] Federal Communications Commission: Evaluating Compliance with FCC Guidelines for Human Exposure to Radiofrequency Electromagnetic Fields, Supplement C (Edition 01-01) to OET Bulletin 65 (Edition 97-01), FCC, 2001.
- [IEEE C95.1-1999] IEEE Std C95.1-1999: IEEE Standard for Safety Levels with Respect to Human Exposure to Radio Frequency Electromagnetic Fields, 3 kHz to 300 GHz, Inst. of Electrical and Electronics Engineers, Inc., 1999.
- [IEEE C95.1-2005] IEEE Std C95.1-2005: IEEE Standard for Safety Levels with Respect to Human Exposure to Radio Frequency Electromagnetic Fields, 3 kHz to 300 GHz, Inst. of Electrical and Electronics Engineers, Inc., 2005.
- [ICNIRP 1998] ICNIRP: Guidelines for Limiting Exposure to Time-varying Electric, Magnetic, and Electromagnetic Fields (up to 300 GHz), In: Health Physics, Vol. 74, No. 4, 494-522, 1998.
- [IEEE 1528-2003] IEEE Std 1528-2003: IEEE Recommended Practice for Determining the Peak Spatial-Average Specific Absorption Rate (SAR) in the Human Head from Wireless Communications Devices: Measurement Techniques. 1528-2003, December 19, 2003, The Institute of Electrical and Electronics Engineers.
- [NIST 1994] NIST: Guidelines for Evaluating and Expressing the Uncertainty of NIST Measurement Results, Technical Note 1297 (TN1297), United States Department of Commerce Technology Administration, National Institute of Standards and Technology, 1994.
- [DASY4] Schmid & Partner Engineering AG: DASY4 Manual. April 2008
- [FCC 96-326] FCC 96-326, ET Docket No. 93-62, Report and Order, August 1, 1996
- [KDB 648474] 648474 D01 SAR Handsets Multi Xmitter and Ant, v01r05 , SAR Evaluation Considerations for Handsets with Multiple Transmitters and Antennas
- [KDB 447498] 447498 D01 v05r01 General RF Exposure Guidance v05, May 28, 2013
- [KDB 865664] 865664 D01 v01r01 SAR measurement 100 MHz to 6 GHz, May 28, 2013
- [47 CFR] Code of Federal Regulations; Title 47, Telecommunications