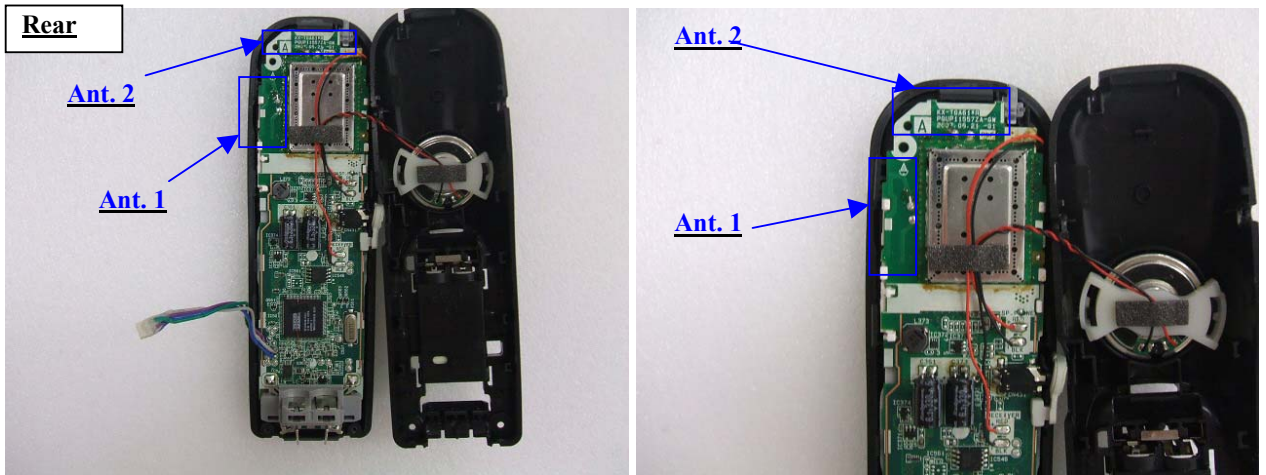


## APPENDIX 1 : Photographs of test setup

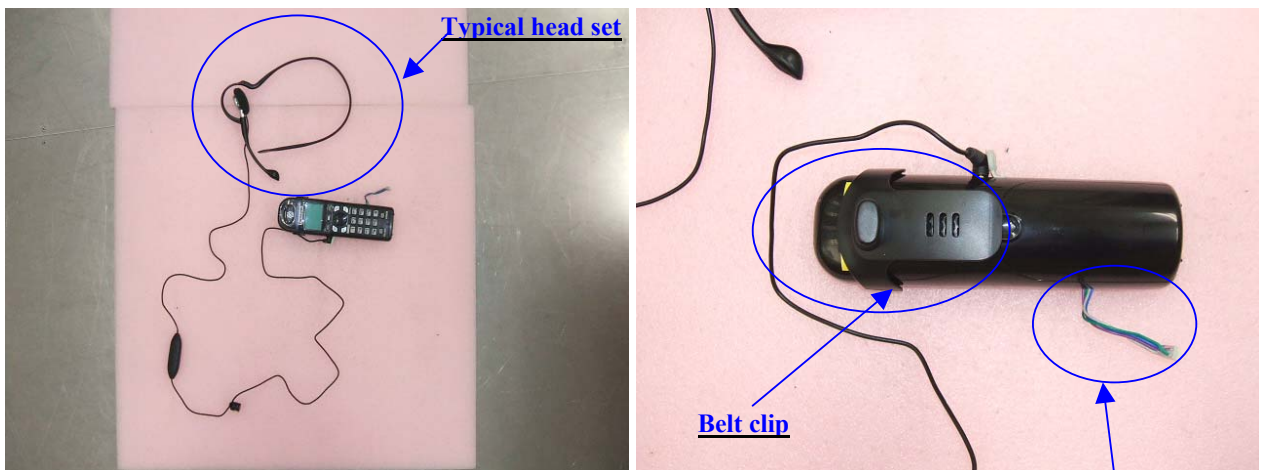
### 1. Photograph of EUT



## 2. Antenna position



## 3. EUT with accessories (Body-worn setup)



The cable is attached to the EUT just for testing.  
It is connected with PC in order to make the EUT test operation mode first, but is disconnected from the PC during test.  
The cable is not attached to the production model.

#### 4. Photograph of set up

##### (1) Left cheek



---

**UL Japan, Inc.**  
**Head Office EMC Lab.**  
4383-326 Asama-cho, Ise-shi, Mie-ken 516-0021 JAPAN  
Telephone : +81 596 24 8116  
Facsimile : +81 596 24 8124

(2) Left tilt



---

**UL Japan, Inc.**  
**Head Office EMC Lab.**  
4383-326 Asama-cho, Ise-shi, Mie-ken 516-0021 JAPAN  
Telephone : +81 596 24 8116  
Facsimile : +81 596 24 8124

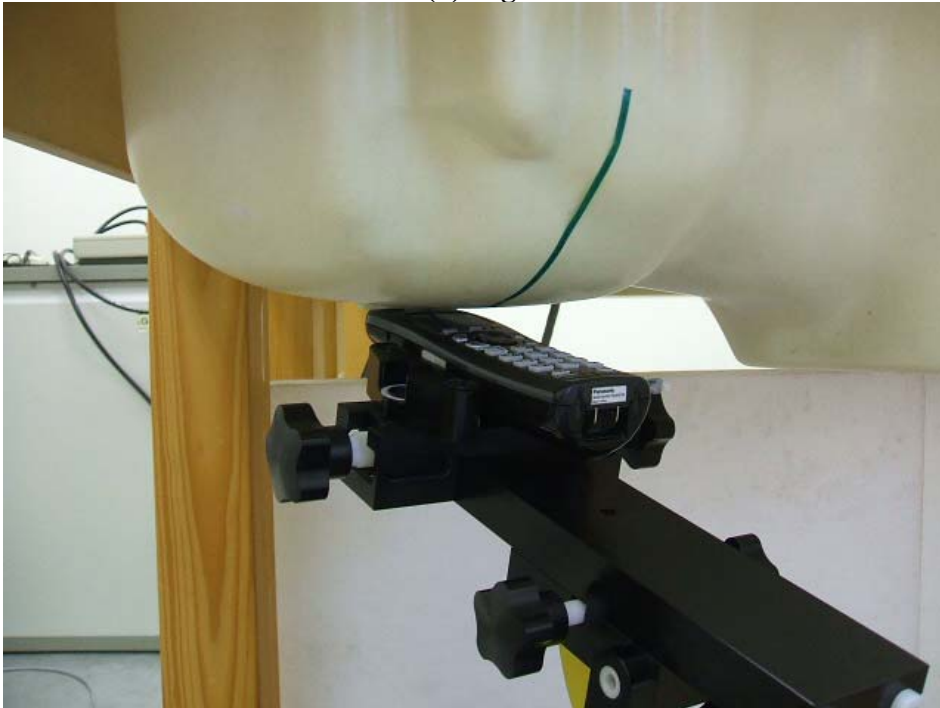
**(3)Right cheek**



---

**UL Japan, Inc.**  
**Head Office EMC Lab.**  
4383-326 Asama-cho, Ise-shi, Mie-ken 516-0021 JAPAN  
Telephone : +81 596 24 8116  
Facsimile : +81 596 24 8124

**(4) Right tilt**



---

**UL Japan, Inc.**  
**Head Office EMC Lab.**  
4383-326 Asama-cho, Ise-shi, Mie-ken 516-0021 JAPAN  
Telephone : +81 596 24 8116  
Facsimile : +81 596 24 8124

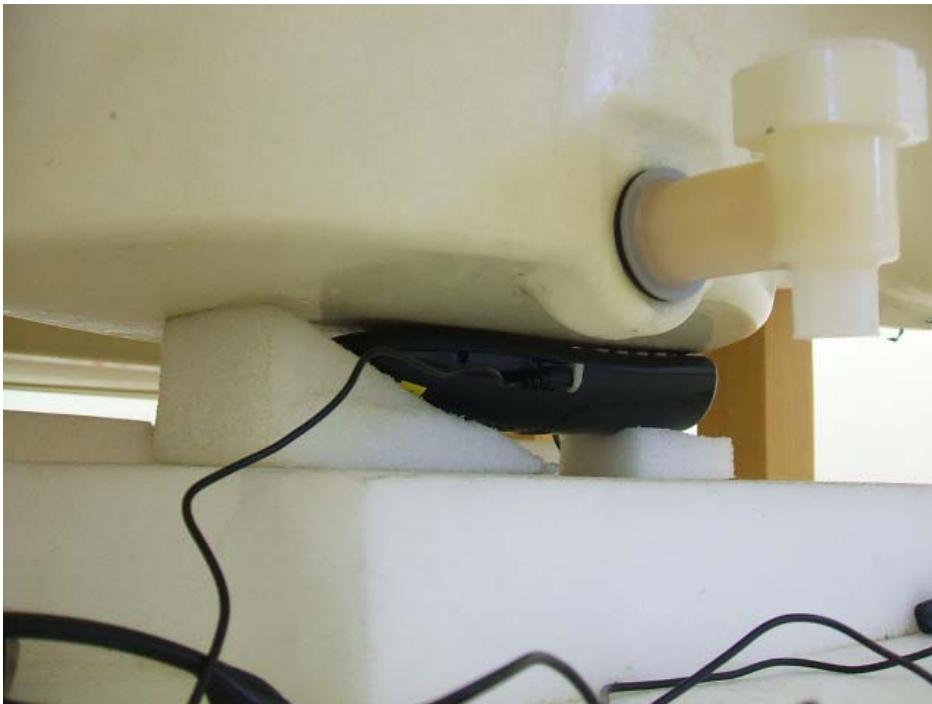
(5) Rear



---

**UL Japan, Inc.**  
**Head Office EMC Lab.**  
4383-326 Asama-cho, Ise-shi, Mie-ken 516-0021 JAPAN  
Telephone : +81 596 24 8116  
Facsimile : +81 596 24 8124

(6) Front



---

**UL Japan, Inc.**  
**Head Office EMC Lab.**  
4383-326 Asama-cho, Ise-shi, Mie-ken 516-0021 JAPAN  
Telephone : +81 596 24 8116  
Facsimile : +81 596 24 8124

(7) Left side



---

**UL Japan, Inc.**  
**Head Office EMC Lab.**  
4383-326 Asama-cho, Ise-shi, Mie-ken 516-0021 JAPAN  
Telephone : +81 596 24 8116  
Facsimile : +81 596 24 8124

(8) Right side



---

**UL Japan, Inc.**  
**Head Office EMC Lab.**  
4383-326 Asama-cho, Ise-shi, Mie-ken 516-0021 JAPAN  
Telephone : +81 596 24 8116  
Facsimile : +81 596 24 8124

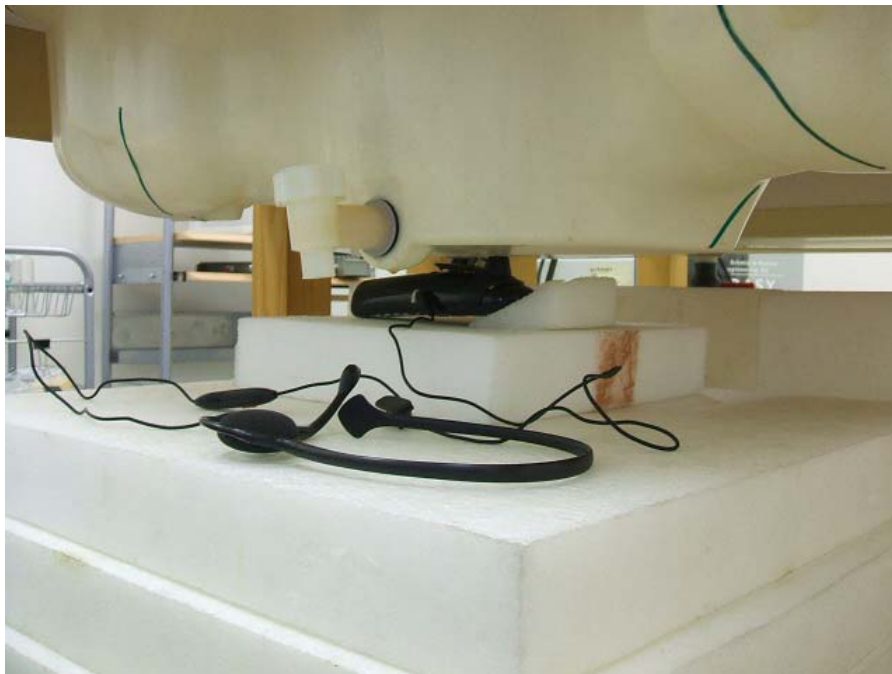
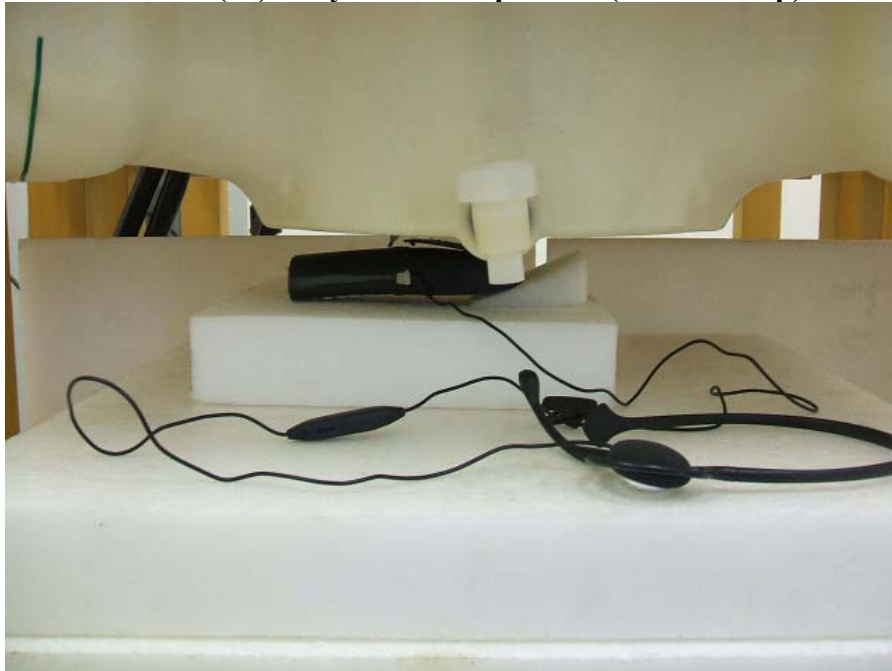
(9) Top



---

**UL Japan, Inc.**  
**Head Office EMC Lab.**  
4383-326 Asama-cho, Ise-shi, Mie-ken 516-0021 JAPAN  
Telephone : +81 596 24 8116  
Facsimile : +81 596 24 8124

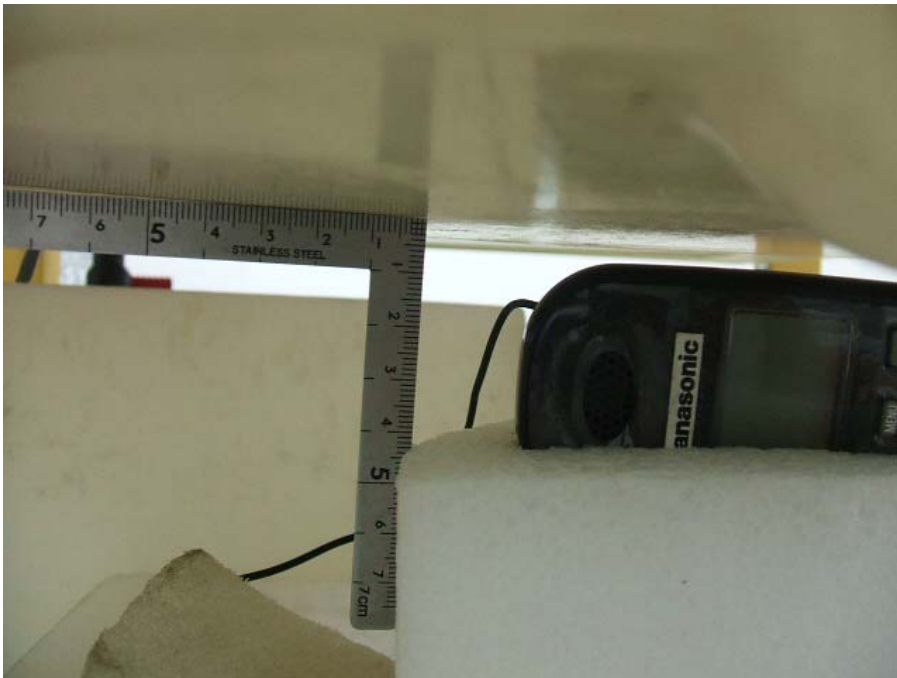
**(10) Body-worn set up / Rear (with belt clip)**



---

**UL Japan, Inc.**  
**Head Office EMC Lab.**  
4383-326 Asama-cho, Ise-shi, Mie-ken 516-0021 JAPAN  
Telephone : +81 596 24 8116  
Facsimile : +81 596 24 8124

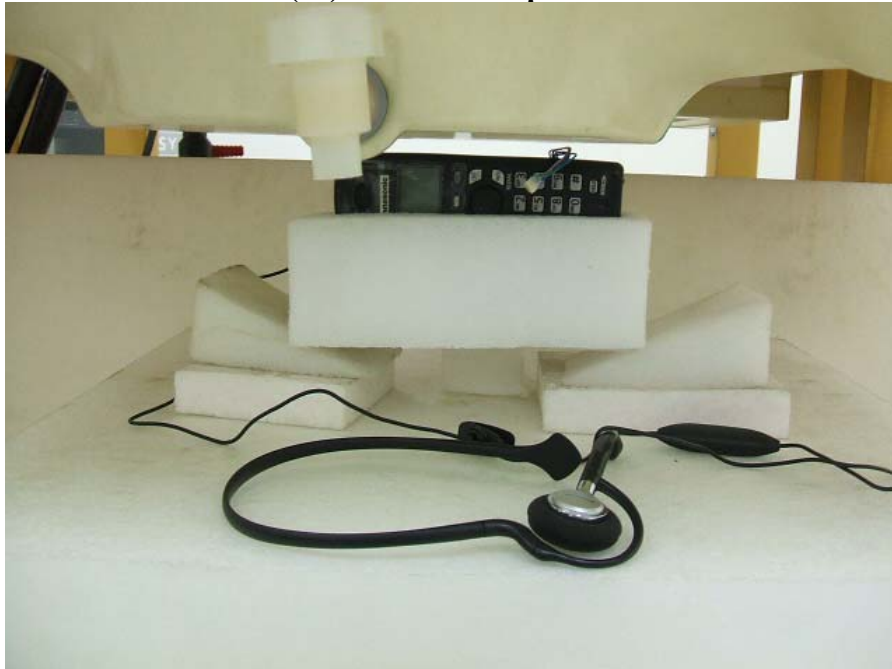
(11) Left side / Separation 5mm



---

**UL Japan, Inc.**  
**Head Office EMC Lab.**  
4383-326 Asama-cho, Ise-shi, Mie-ken 516-0021 JAPAN  
Telephone : +81 596 24 8116  
Facsimile : +81 596 24 8124

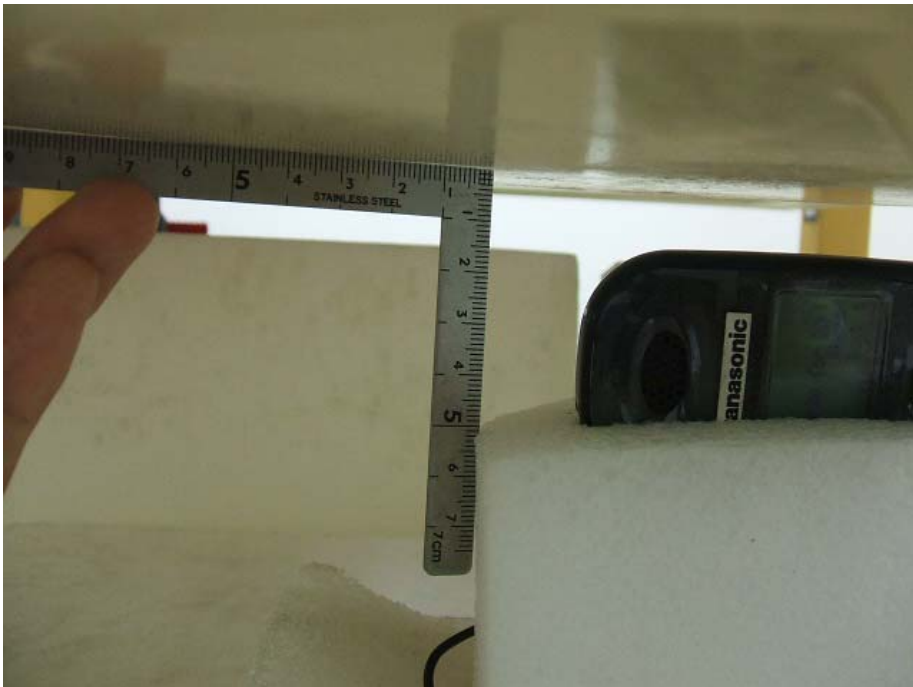
**(11) Left side / Separation 10mm**



---

**UL Japan, Inc.**  
**Head Office EMC Lab.**  
4383-326 Asama-cho, Ise-shi, Mie-ken 516-0021 JAPAN  
Telephone : +81 596 24 8116  
Facsimile : +81 596 24 8124

**(11) Left side / Separation 15mm**



---

**UL Japan, Inc.**  
**Head Office EMC Lab.**  
4383-326 Asama-cho, Ise-shi, Mie-ken 516-0021 JAPAN  
Telephone : +81 596 24 8116  
Facsimile : +81 596 24 8124