

File : c:/idx3/SYSTEM/SARMEAS3/data/Normal/02010201\_ZOOM.VLT

Start : 2-Jan-102 08:46:18 am End : 2-Jan-102 09:01:34 am

Radio Type : Validation  
Model Number :  
Serial Number : C  
Frequency : 2450 MHz  
Peak Trans. Pwr : 0.250 W  
Start Trans. Pwr : 0.250 W  
Antenna Type : Dipole  
Antenna Posn. : Internal  
Phantom Type : Flat  
Phantom Posn. : E Field  
Scan Type : ZOOM/SAR  
Probe Name : PCTEST  
Field Type : E Field  
Orientation : 0 Degrees

Mixture Type = Brain  
Mixture Dielectric Constant = 39.200  
Mixture Conductivity = 1.800

Comment :  
2450 MHz Brain Validation  
SN: C

Robot : PCTEST

Probe Offset = 0.20 cm  
Sensor Factor = 0.0108  
Conversion Factor = 1.004

PCTEST Amplifier Channel Settings : 0.309 0.361 0.421

Max Location : X = 1.750, Y = -2.000, Z = 0.000 (cm) Value = 295.112

Measured Values (volts) =  
2.521E-001 1.518E-001 9.800E-002 7.119E-002 5.488E-002 4.028E-002  
3.141E-002 2.482E-002 2.059E-002 9.985E-003 7.142E-003 5.265E-003  
4.083E-003 4.200E-003 3.444E-003 2.628E-003 2.172E-003 1.014E-003  
2.043E-003 2.255E-003 2.262E-003

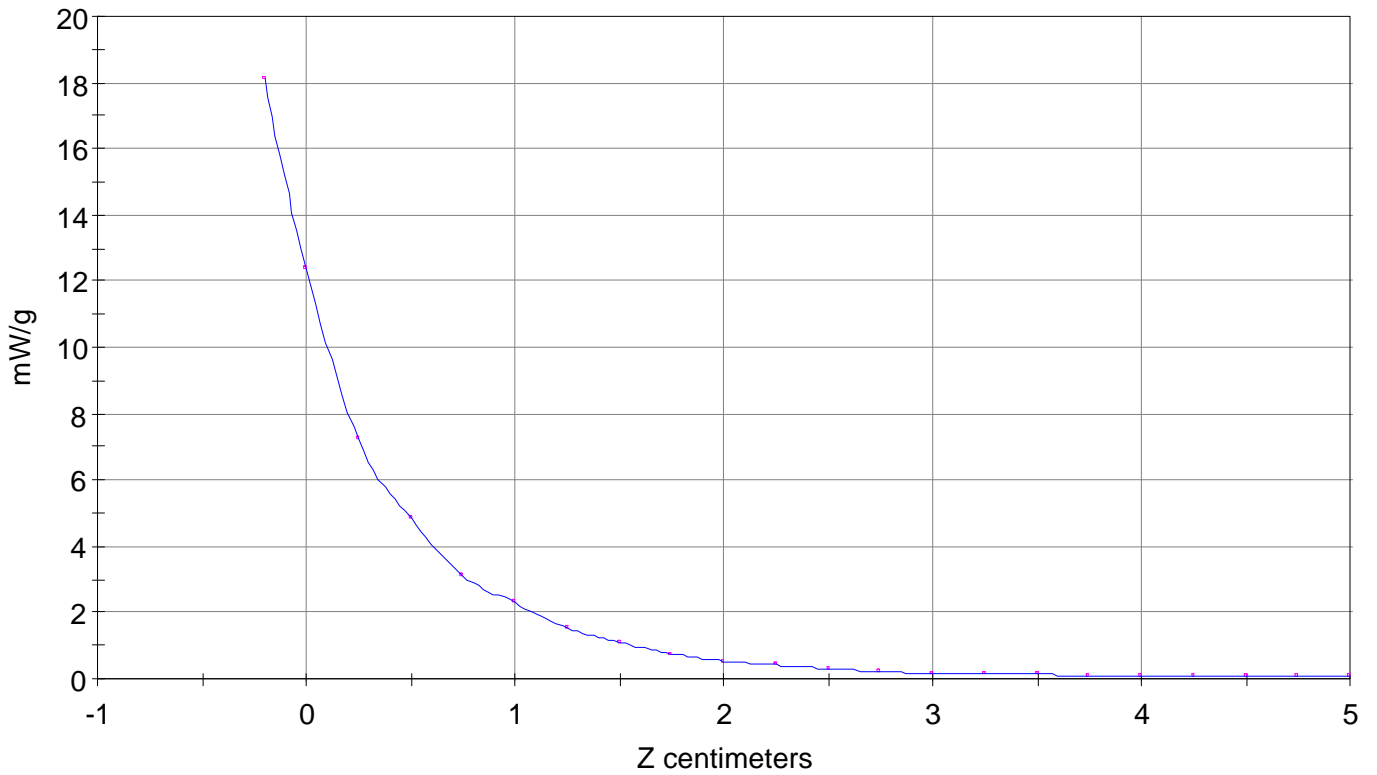
Calc. Voltage @ Surface (Vs) = 0.3764

Voltage @ 1.00 cm (Vt) = 0.0322

Ave. Voltage (Vs+Vt)/2 = 0.1343

Ave. SAR over 1 g (mW/g) = 12.5341

SAR Scan  
File : 02010201\_ZOOM  
Start : 2-Jan-102 08:46:18 am End : 2-Jan-102 09:01:34 am  
Validation//C;2450MHz;W;Dipole/Internal;  
Flat/E Field;ZOOM/SAR;PCTEST/E Field/0 DegreesBrain/39.200/1.800

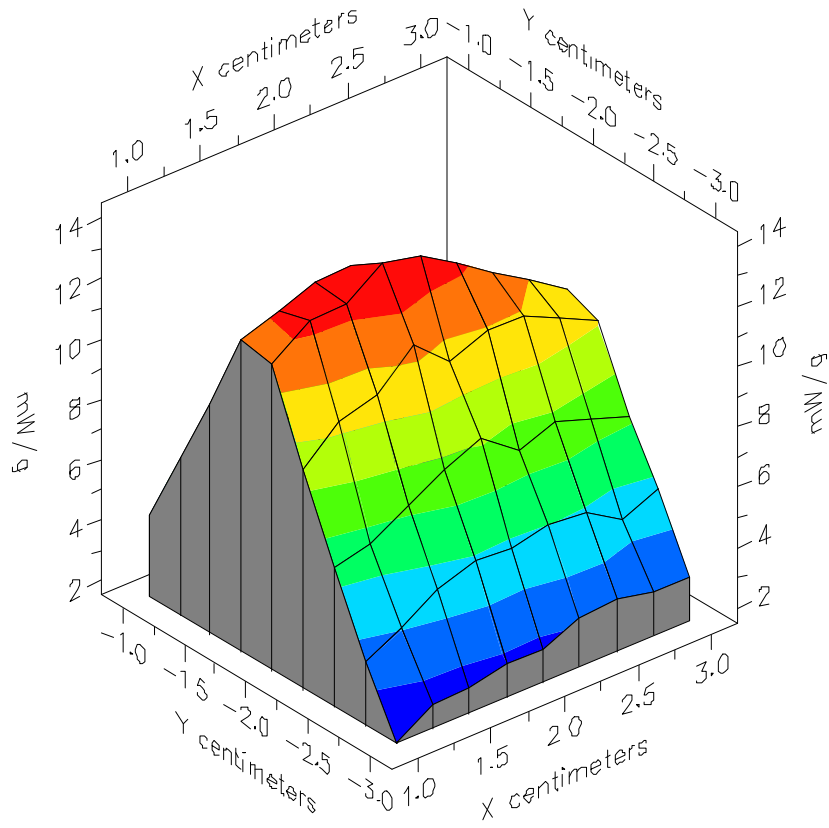


File : 02010201\_ZOOM

Start : 2-Jan-102 08:46:18 am End : 2-Jan-102 09:01:34 am

Validation//C;2450MHz;W;Dipole/Internal;

Flat/E Field;ZOOM/SAR;PCTEST/E Field/0 DegreesBrain/39.200/1.800



File : 02010201\_ZOOM

Start : 2-Jan-102 08:46:18 am End : 2-Jan-102 09:01:34 am

Validation//C;2450MHz;W;Dipole/Internal;

Flat/E Field;ZOOM/SAR;PCTEST/E Field/0 DegreesBrain/39.200/1.800

