

File : c:/idx3/SYSTEM/SARMEAS3/data/Normal/01051407_ZOOM.VLT
Start : 14-May-101 01:09:45 pm End : 14-May-101 01:18:24 pm

Radio Type : PANASONIC
Model Number : KX-TG2481
Serial Number : 1
Frequency : 2401.50 MHz
Peak Trans. Pwr : 0.053 W
Start Trans. Pwr : 0.053 W
Antenna Type : Helical
Antenna Posn. : Internal
Phantom Type : Body
Phantom Posn. : Abdomen
Scan Type : ZOOM/SAR
Probe Name : PCTEST2
Field Type : E Field
Orientation : 0 Degrees

Mixture Type = Muscle
Mixture Dielectric Constant = 52.200
Mixture Conductivity = 2.850

Comment :
PANASONIC CORDLESS DSS PHONE
CH 01
PANASONIC CORDLESS DSS PHONE - BODY SAR

Robot : PCTEST

Probe Offset = 0.25 cm
Sensor Factor = 0.0108
Conversion Factor = 0.983

PCTEST2 Amplifier Channel Settings : 0.172 0.187 0.220

Max Location : X = -5.250, Y = -0.500, Z = 0.000 (cm) Value = 7.049

Measured Values (volts) =
6.513E-003 3.958E-003 2.299E-003 1.396E-003 9.306E-004 5.405E-004
2.473E-004 1.193E-004 1.210E-004 1.077E-004 5.008E-005 0.000E+000
0.000E+000 0.000E+000 0.000E+000 0.000E+000 0.000E+000 0.000E+000
0.000E+000 0.000E+000 0.000E+000

Calc. Voltage @ Surface (Vs) = 0.0110

Voltage @ 1.00 cm (Vt) = 0.0014

Ave. Voltage (Vs+Vt)/2 = 0.0062

Ave. SAR over 1 g (mW/g) = 0.5626

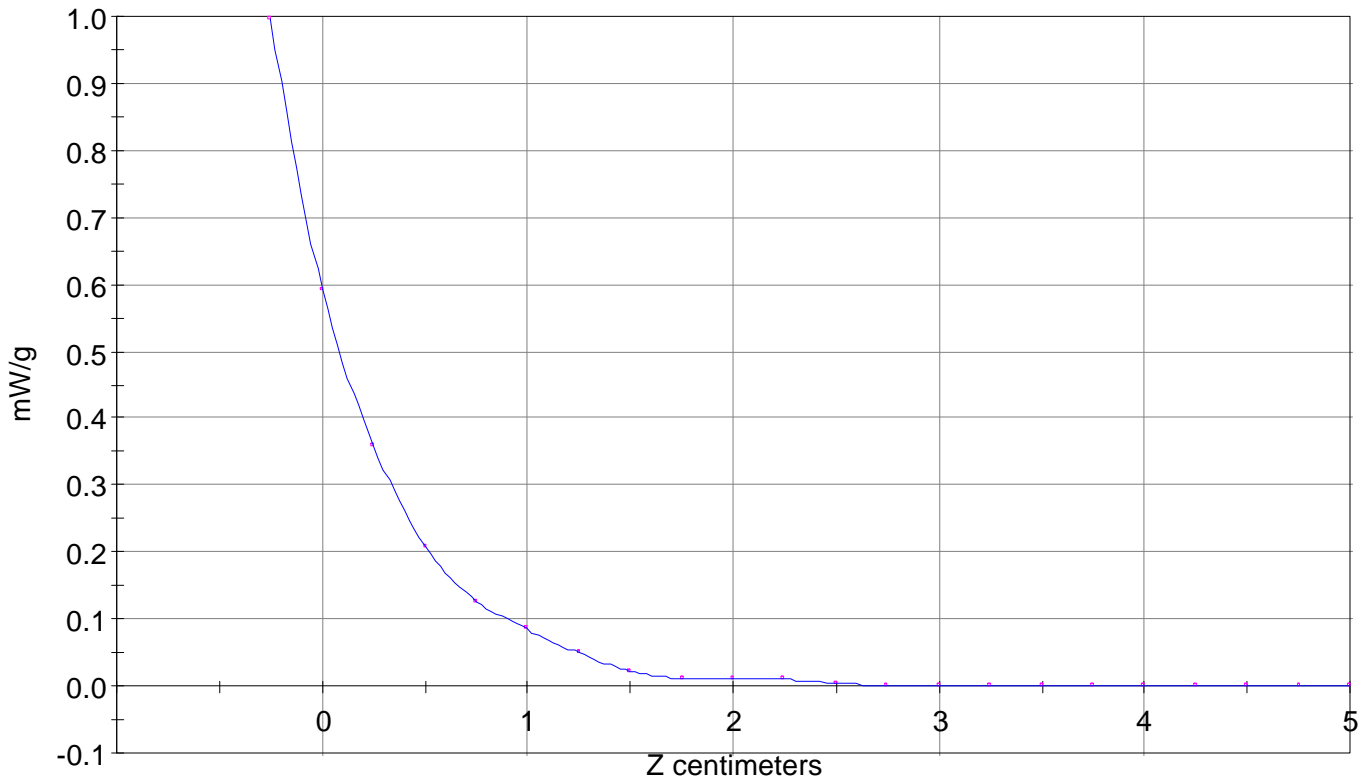
SAR Scan

File : 01051407_ZOOM

Start : 14-May-101 01:09:45 pm End : 14-May-101 01:18:24 pm

PANASONIC/KX-TG2481/1;2401.50MHz;W;Helical/Internal;

Body/Abdomen;ZOOM/SAR;PCTEST2/E Field/0 DegreesMuscle/52.200/2.850

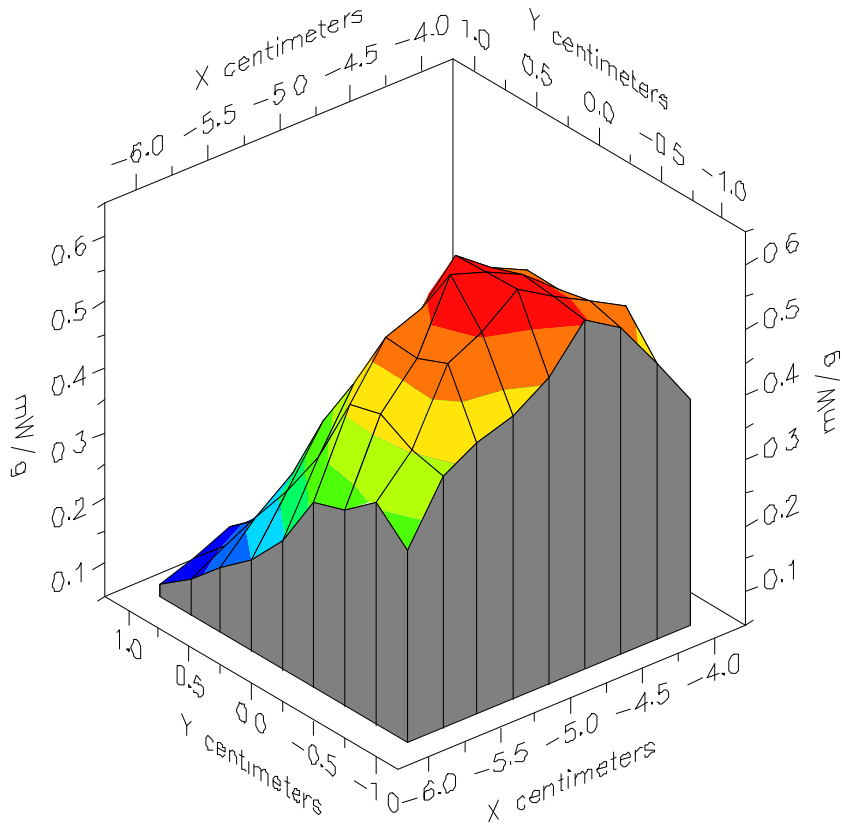


File : 01051407_ZOOM

Start : 14-May-101 01:09:45 pm End : 14-May-101 01:18:24 pm

PANASONIC/KX-TG2481/1;2401.50MHz;W;Helical/Internal;

Body/Abdomen;ZOOM/SAR;PCTEST2/E Field/0 DegreesMuscle/52.200/2.850



File : 01051407_ZOOM

Start : 14-May-101 01:09:45 pm End : 14-May-101 01:18:24 pm

PANASONIC/KX-TG2481/1;2401.50MHz;W;Helical/Internal;

Body/Abdomen;ZOOM/SAR;PCTEST2/E Field/0 DegreesMuscle/52.200/2.850

