

File : c:/idx3/SYSTEM/SARMEAS3/data/Normal/00032409_ZOOM.VLT
Start : 24-Mar-100 01:03:31 pm End : 24-Mar-100 01:14:10 pm

FCC ID : ACJ96NKX-TG2200
Model Number : KX-TG2200B-R-H
Serial Number : 1
Frequency : 2401.056 MHz
Peak Trans. Pwr : 0.210 W
Start Trans. Pwr: 0.210 W
Antenna Type : Helical
Antenna Posn. : In
Phantom Type : Body
Phantom Posn. : Abdomen
Scan Type : ZOOM/SAR
Probe Name : AP109
Field Type : E Field
Orientation : 0 Degrees

Mixture Type = Muscle
Mixture Dielectric Constant = 52.200
Mixture Conductivity = 2.850

Comment :
PANASONIC FHSS CORDLESS PHONE
CHAN. 0 BASE
FIXED ANTENNA

Robot : PCTEST

Probe Offset = 0.20 cm
Sensor Factor = 0.0108
Conversion Factor = 0.983

AP109 Amplifier Channel Settings : 0.172 0.187 0.220

Max Location : X = 0.000, Y = -0.500, Z = 0.000 (cm) Value = 5.860

Measured Values (volts) =
5.815E-003 4.860E-003 4.283E-003 3.677E-003 3.107E-003 2.487E-003
1.983E-003 1.724E-003 1.614E-003 1.701E-003 1.764E-003 1.741E-003
1.659E-003 1.356E-003 1.062E-003 7.255E-004 4.256E-004 3.906E-004
4.411E-004 6.744E-004 8.849E-004

Calc. Voltage @ Surface (Vs) = 0.0066

Voltage @ 1.00 cm (Vt) = 0.0036

Ave. Voltage (Vs+Vt)/2 = 0.0051

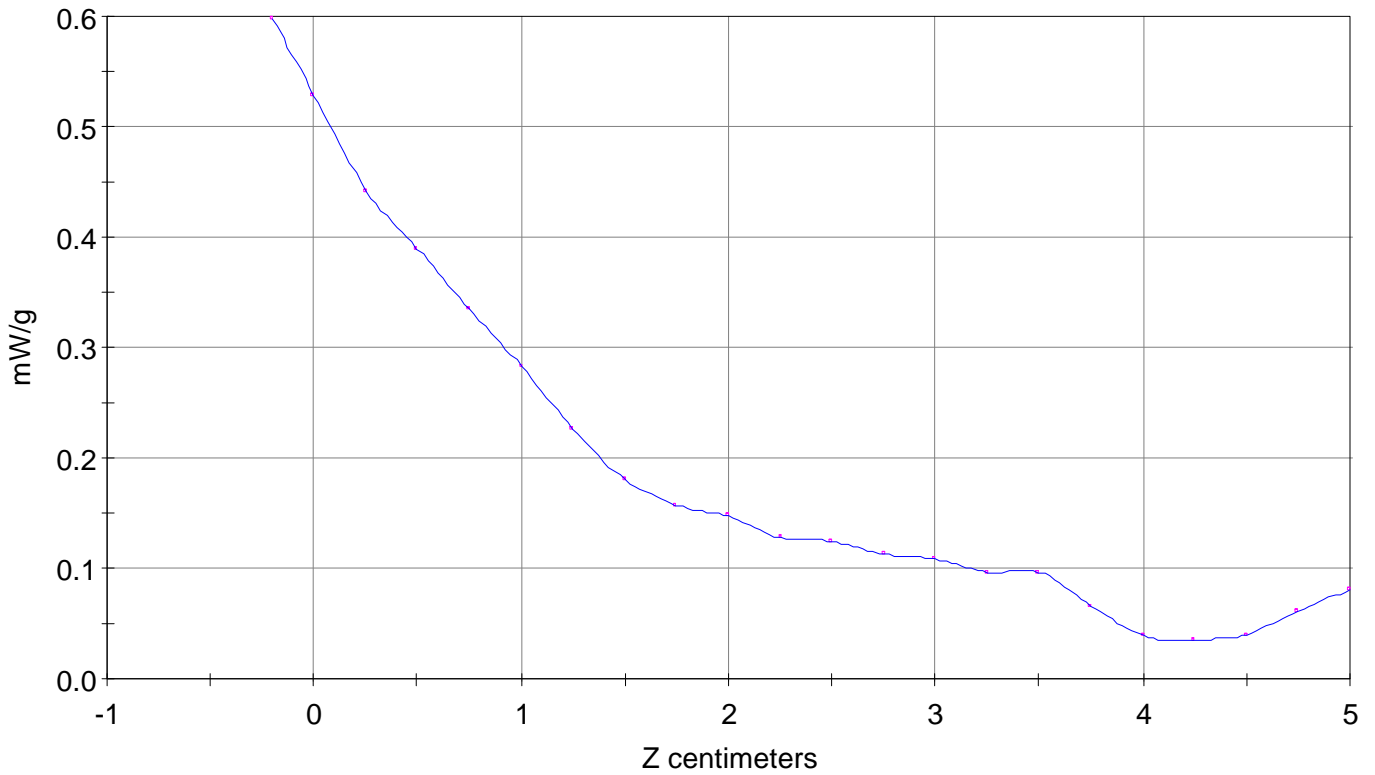
Ave. SAR over 1 g (mW/g) = 0.4613

SAR Scan

File : 00032409_ZOOM

Start : 24-Mar-100 01:03:31 pm End : 24-Mar-100 01:14:10 pm

ACJ96NKX-TG2200/KX-TG2200B-R-H/1;2401.056MHz;W;Helical/In;
Body/Abdomen;ZOOM/SAR;AP109/E Field/0 DegreesMuscle/52.200/2.850

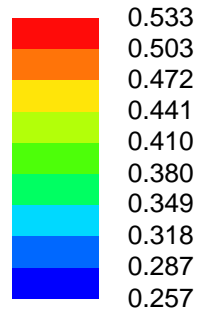
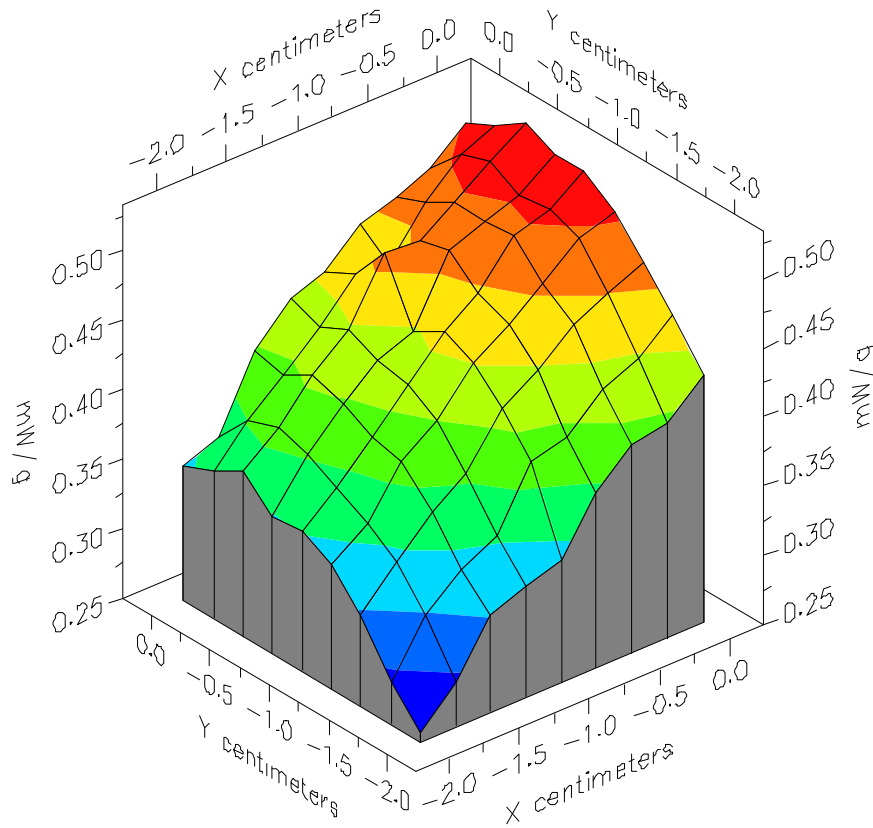


File : 00032409_ZOOM

Start : 24-Mar-100 01:03:31 pm End : 24-Mar-100 01:14:10 pm

ACJ96NKX-TG2200/KX-TG2200B-R-H/1;2401.056MHz;W;Helical/In;

Body/Abdomen;ZOOM/SAR;AP109/E Field/0 DegreesMuscle/52.200/2.850

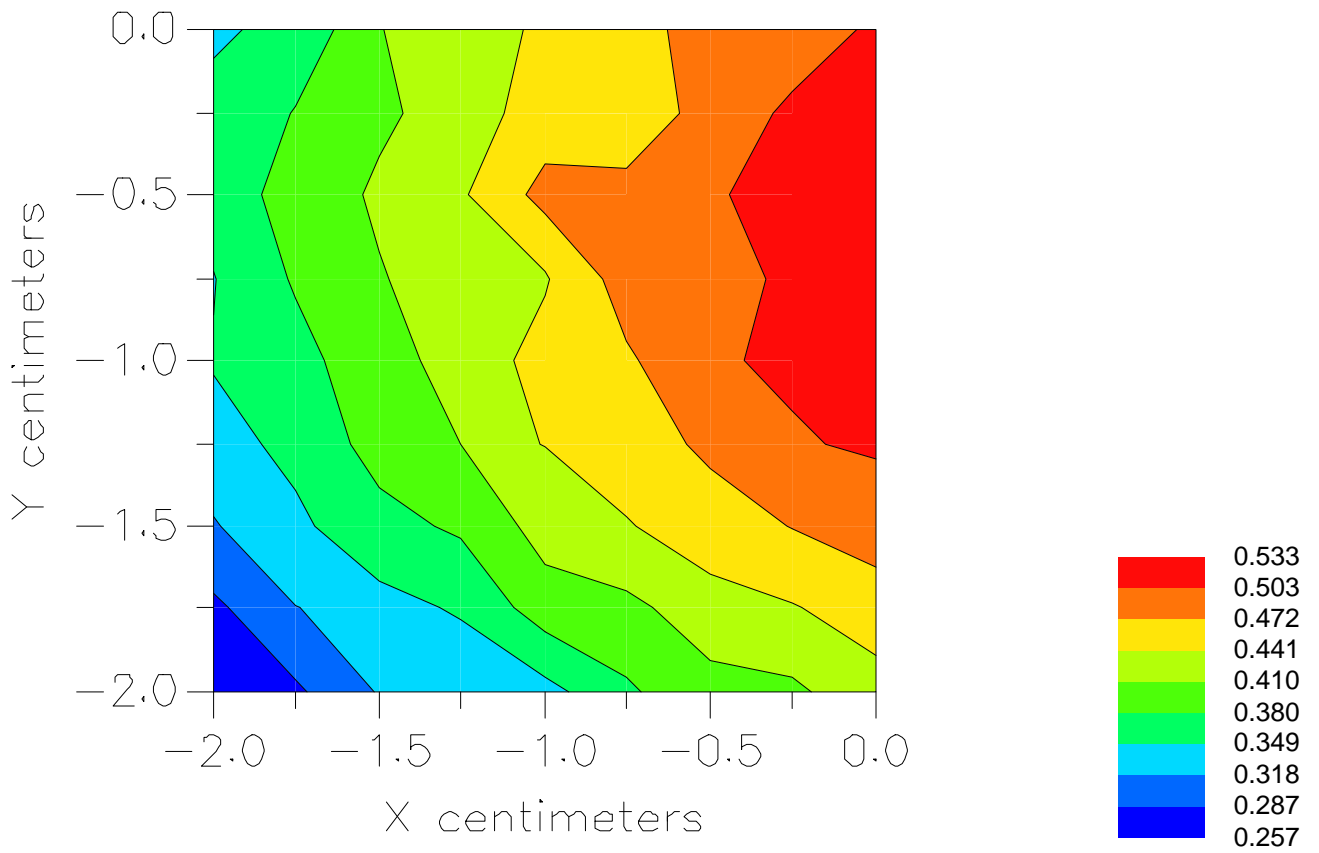


File : 00032409_ZOOM

Start : 24-Mar-100 01:03:31 pm End : 24-Mar-100 01:14:10 pm

ACJ96NKX-TG2200/KX-TG2200B-R-H/1;2401.056MHz;W;Helical/In;

Body/Abdomen;ZOOM/SAR;AP109/E Field/0 DegreesMuscle/52.200/2.850



File : c:/idx3/SYSTEM/SARMEAS3/data/Normal/00032410_ZOOM.VLT
Start : 24-Mar-100 01:21:45 pm End : 24-Mar-100 01:33:16 pm

FCC ID : ACJ96NKX-TG2200
Model Number : KX-TG2200B-R-H
Serial Number : 1
Frequency : 2440.800 MHz
Peak Trans. Pwr : 0.270 W
Start Trans. Pwr: 0.270 W
Antenna Type : Helical
Antenna Posn. : In
Phantom Type : Body
Phantom Posn. : Abdomen
Scan Type : ZOOM/SAR
Probe Name : AP109
Field Type : E Field
Orientation : 0 Degrees

Mixture Type = Muscle
Mixture Dielectric Constant = 52.200
Mixture Conductivity = 2.850

Comment :
PANASONIC FHSS CORDLESS PHONE
CHAN. 46 BASE
FIXED ANTENNA

Robot : PCTEST

Probe Offset = 0.20 cm
Sensor Factor = 0.0108
Conversion Factor = 0.983

AP109 Amplifier Channel Settings : 0.172 0.187 0.220

Max Location : X = 1.000, Y = -0.750, Z = 0.000 (cm) Value = 6.140

Measured Values (volts) =
6.103E-003 5.337E-003 4.726E-003 4.259E-003 3.691E-003 3.106E-003
2.492E-003 1.968E-003 1.750E-003 1.617E-003 1.671E-003 1.765E-003
1.773E-003 1.659E-003 1.476E-003 1.084E-003 7.347E-004 4.124E-004
4.119E-004 4.690E-004 6.829E-004

Calc. Voltage @ Surface (Vs) = 0.0068

Voltage @ 1.00 cm (Vt) = 0.0041

Ave. Voltage (Vs+Vt)/2 = 0.0055

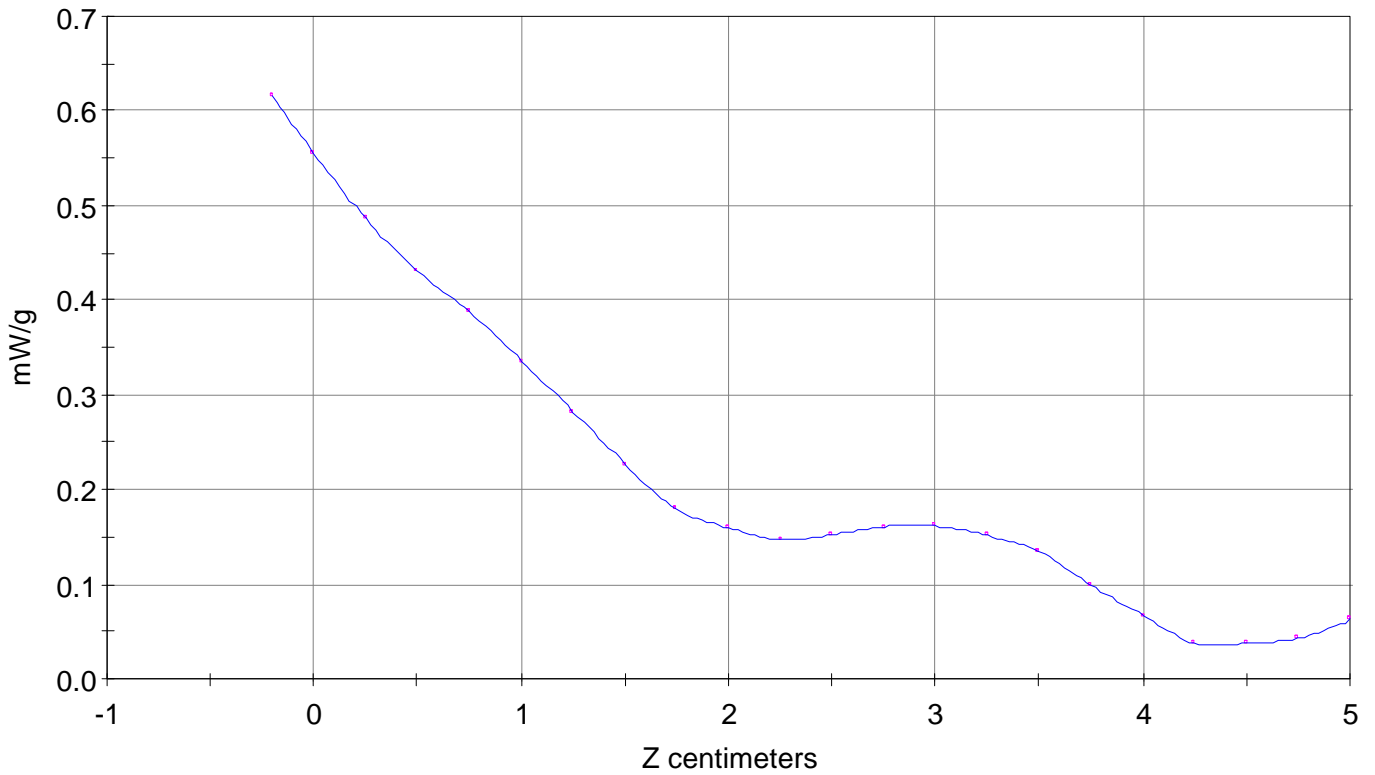
Ave. SAR over 1 g (mW/g) = 0.4963

SAR Scan

File : 00032410_ZOOM

Start : 24-Mar-100 01:21:45 pm End : 24-Mar-100 01:33:16 pm

ACJ96NKX-TG2200/KX-TG2200B-R-H/1;2440.800MHz;W;Helical/In;
Body/Abdomen;ZOOM/SAR;AP109/E Field/0 DegreesMuscle/52.200/2.850

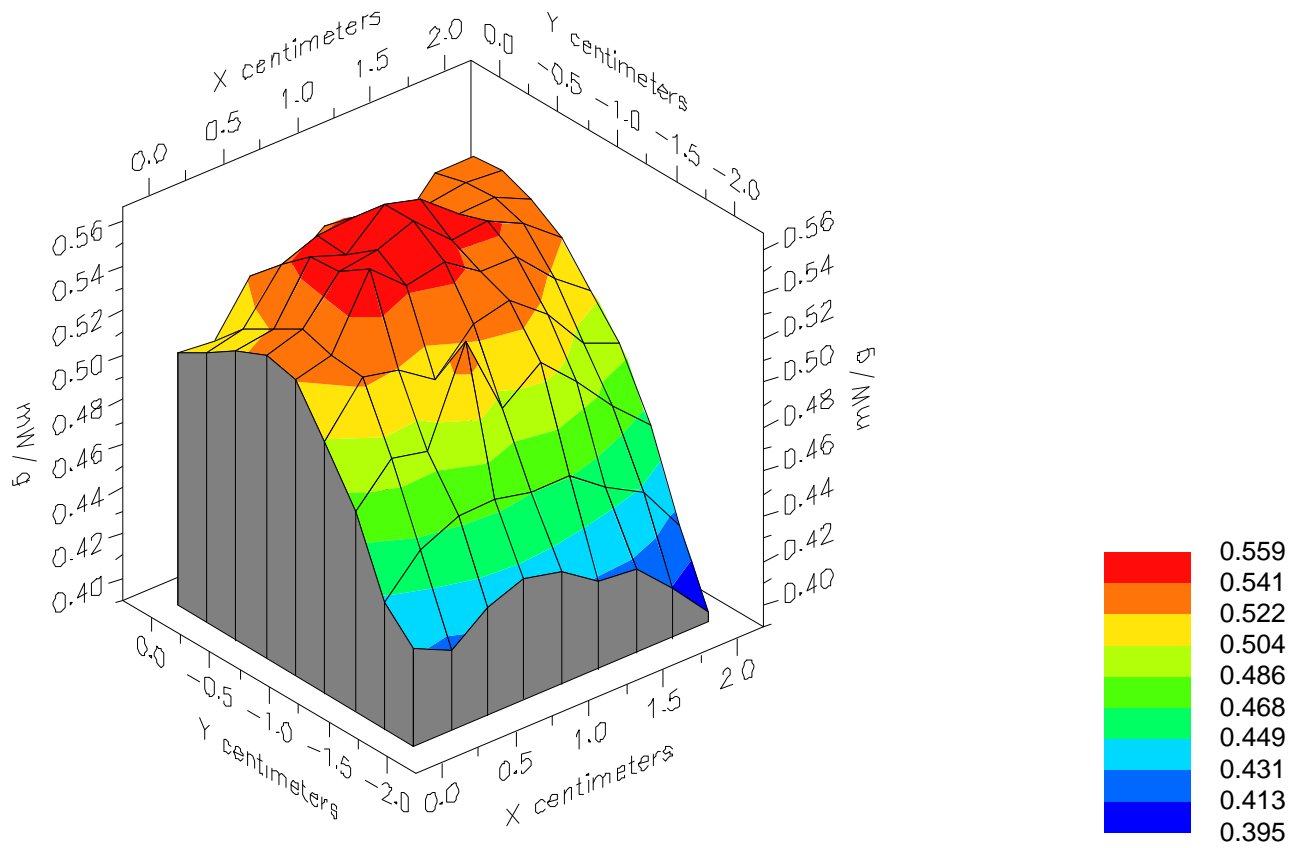


File : 00032410_ZOOM

Start : 24-Mar-100 01:21:45 pm End : 24-Mar-100 01:33:16 pm

ACJ96NKX-TG2200/KX-TG2200B-R-H/1;2440.800MHz;W;Helical/In;

Body/Abdomen;ZOOM/SAR;AP109/E Field/0 DegreesMuscle/52.200/2.850

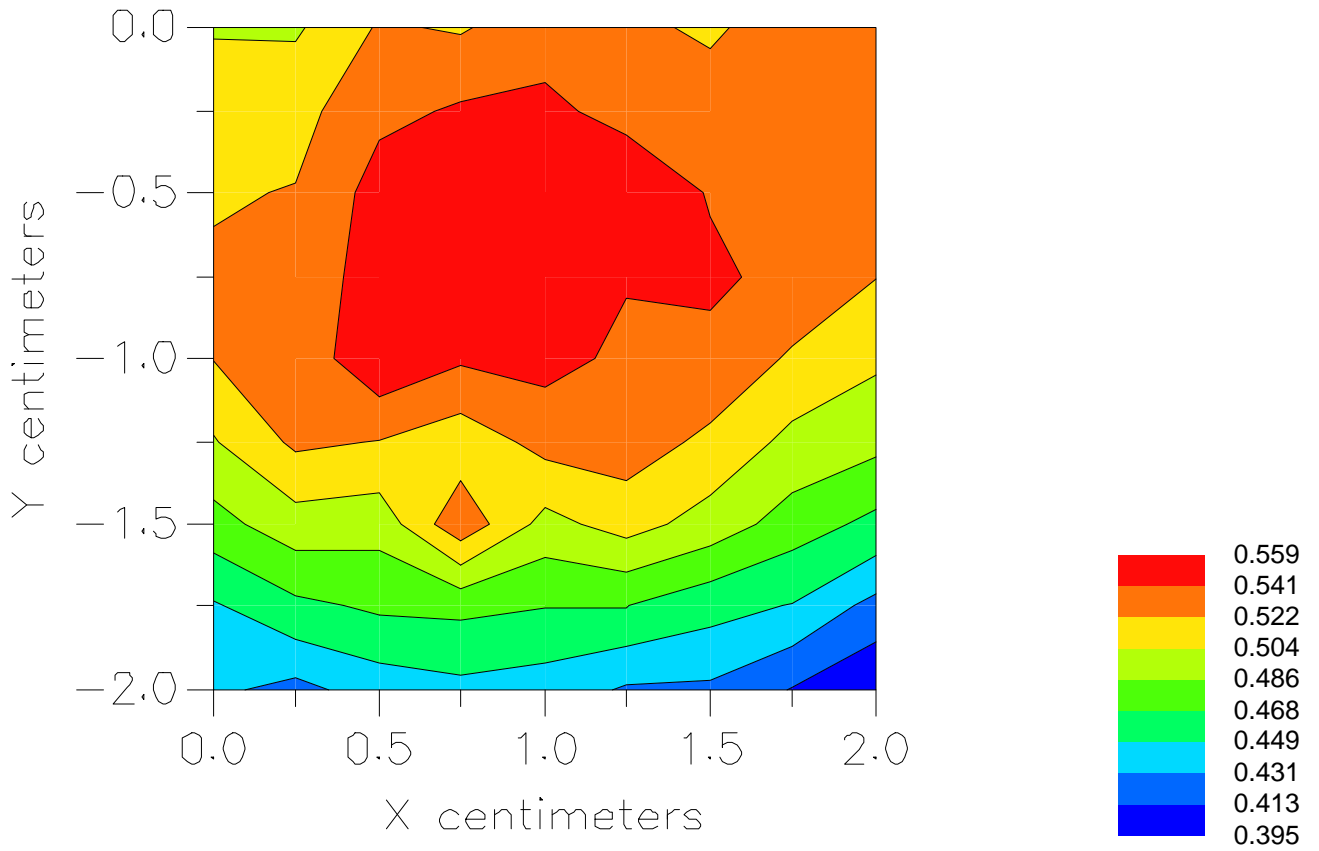


File : 00032410_ZOOM

Start : 24-Mar-100 01:21:45 pm End : 24-Mar-100 01:33:16 pm

ACJ96NKX-TG2200/KX-TG2200B-R-H/1;2440.800MHz;W;Helical/In;

Body/Abdomen;ZOOM/SAR;AP109/E Field/0 DegreesMuscle/52.200/2.850



File : c:/idx3/SYSTEM/SARMEAS3/data/Normal/00032412_ZOOM.VLT
Start : 24-Mar-100 01:52:43 pm End : 24-Mar-100 02:04:28 pm

FCC ID : ACJ96NKX-TG2200
Model Number : KX-TG2200B-R-H
Serial Number : 1
Frequency : 2479.680 MHz
Peak Trans. Pwr : 0.267 W
Start Trans. Pwr : 0.267 W
Antenna Type : Helical
Antenna Posn. : In
Phantom Type : Body
Phantom Posn. : Abdomen
Scan Type : ZOOM/SAR
Probe Name : AP109
Field Type : E Field
Orientation : 0 Degrees

Mixture Type = Muscle
Mixture Dielectric Constant = 52.200
Mixture Conductivity = 2.850

Comment :
PANASONIC FHSS CORDLESS PHONE
CHAN. 91 BASE
FIXED ANTENNA

Robot : PCTEST

Probe Offset = 0.20 cm
Sensor Factor = 0.0108
Conversion Factor = 0.983

AP109 Amplifier Channel Settings : 0.172 0.187 0.220

Max Location : X = 1.000, Y = -0.750, Z = 0.000 (cm) Value = 6.043

Measured Values (volts) =
5.897E-003 5.341E-003 4.980E-003 3.964E-003 3.592E-003 3.004E-003
2.450E-003 2.016E-003 2.222E-003 1.243E-003 1.633E-003 1.664E-003
1.710E-003 1.619E-003 1.368E-003 1.036E-003 6.386E-004 3.906E-004
3.782E-004 3.654E-004 6.957E-004

Calc. Voltage @ Surface (Vs) = 0.0063

Voltage @ 1.00 cm (Vt) = 0.0039

Ave. Voltage (Vs+Vt)/2 = 0.0051

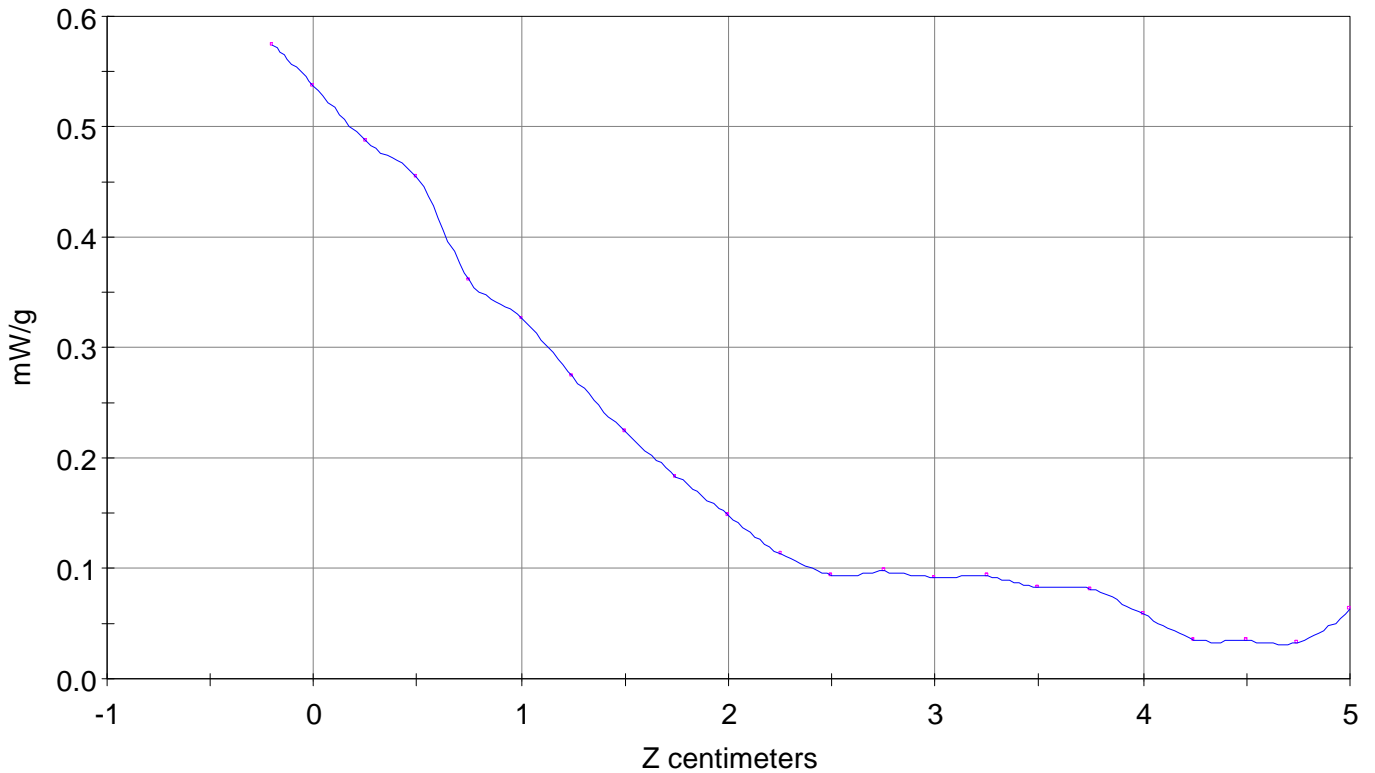
Ave. SAR over 1 g (mW/g) = 0.4642

SAR Scan

File : 00032412_ZOOM

Start : 24-Mar-100 01:52:43 pm End : 24-Mar-100 02:04:28 pm

ACJ96NKX-TG2200/KX-TG2200B-R-H/1;2479.680MHz;W;Helical/In;
Body/Abdomen;ZOOM/SAR;AP109/E Field/0 DegreesMuscle/52.200/2.850

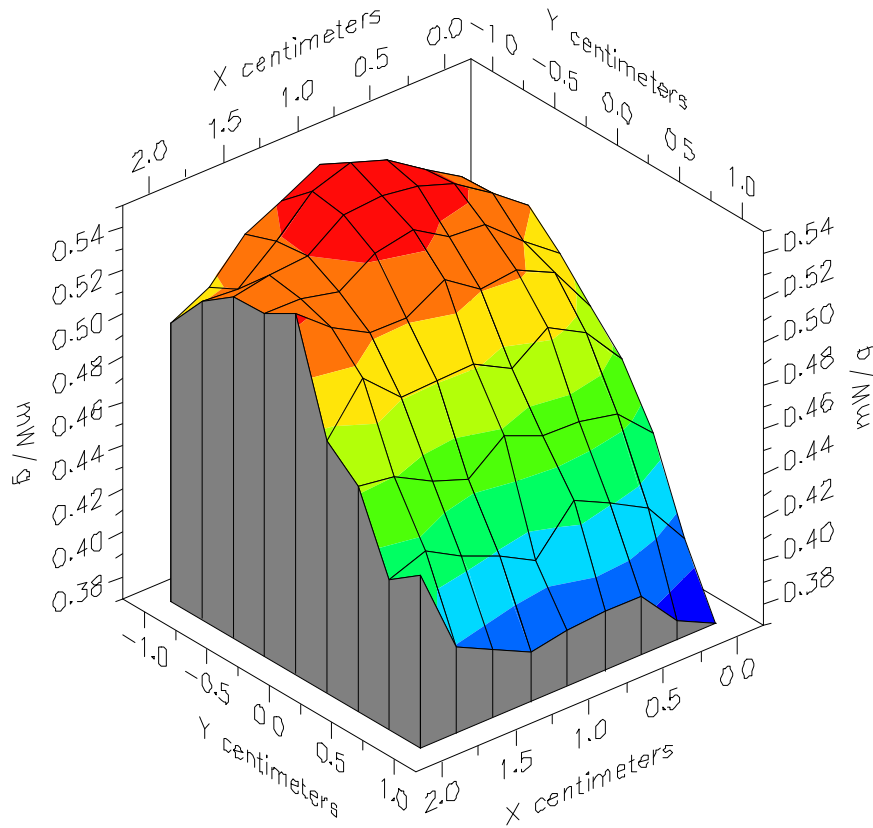


File : 00032412_ZOOM

Start : 24-Mar-100 01:52:43 pm End : 24-Mar-100 02:04:28 pm

ACJ96NKX-TG2200/KX-TG2200B-R-H/1;2479.680MHz;W;Helical/In;

Body/Abdomen;ZOOM/SAR;AP109/E Field/0 DegreesMuscle/52.200/2.850



File : 00032412_ZOOM

Start : 24-Mar-100 01:52:43 pm End : 24-Mar-100 02:04:28 pm

ACJ96NKX-TG2200/KX-TG2200B-R-H/1;2479.680MHz;W;Helical/In;

Body/Abdomen;ZOOM/SAR;AP109/E Field/0 DegreesMuscle/52.200/2.850

