

EXHIBIT D

Photographs

- Figure 1 Front View
- Figure 2 Rear View of Base Unit
- Figure 3 Bottom view of Base Unit
- Figure 4 Bottom view with cover removed (Base Unit)
- Figure 5 Printed Wiring Board removed (Base Unit)
- Figure 6 Printed Wiring Board with RF unit removed (Base Unit)
- Figure 7 Front view of RF unit (Both Base and Portable Unit)
- Figure 8 RF unit, Component side
- Figure 9 RF unit, Foil Side
- Figure 10 Front view of Portable Unit
- Figure 11 Rear view with battery removed (Portable Unit)
- Figure 12 Internal view of Portable Unit, Cover removed
- Figure 13 Printed Wiring Board of Portable Unit, Component side
- Figure 14 Printed Wiring Board of Portable Unit, Foil side
- Figure 15 Printed Wiring Board of Charging Unit, Component side
- Figure 16 Printed Wiring Board of Charging Unit, Foil side
- Figure 17 Difference between similar model KX-TD7894 which is not provided LCD.

Figure 1



Figure 2



Figure 3



Figure 4

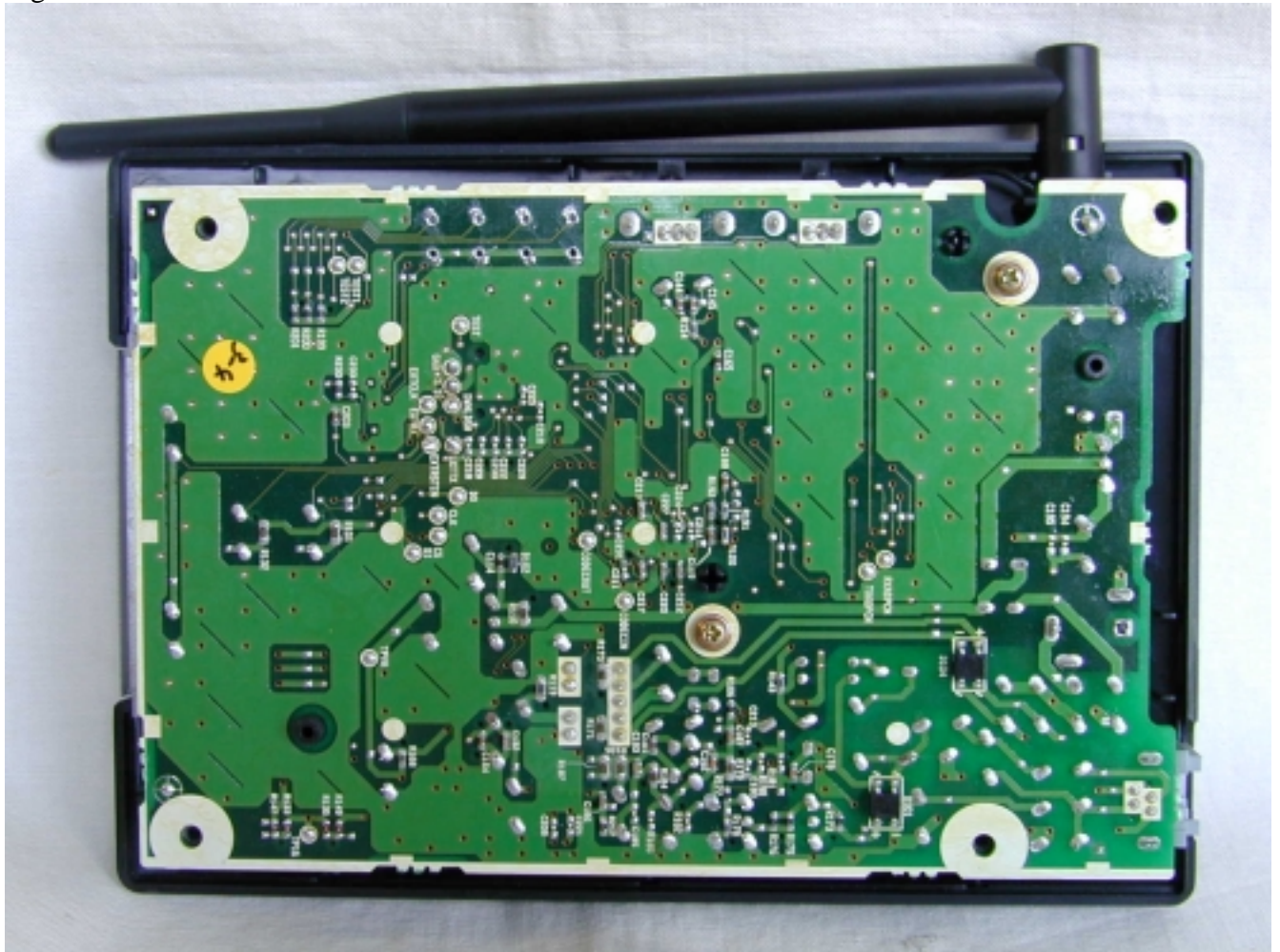


Figure 5

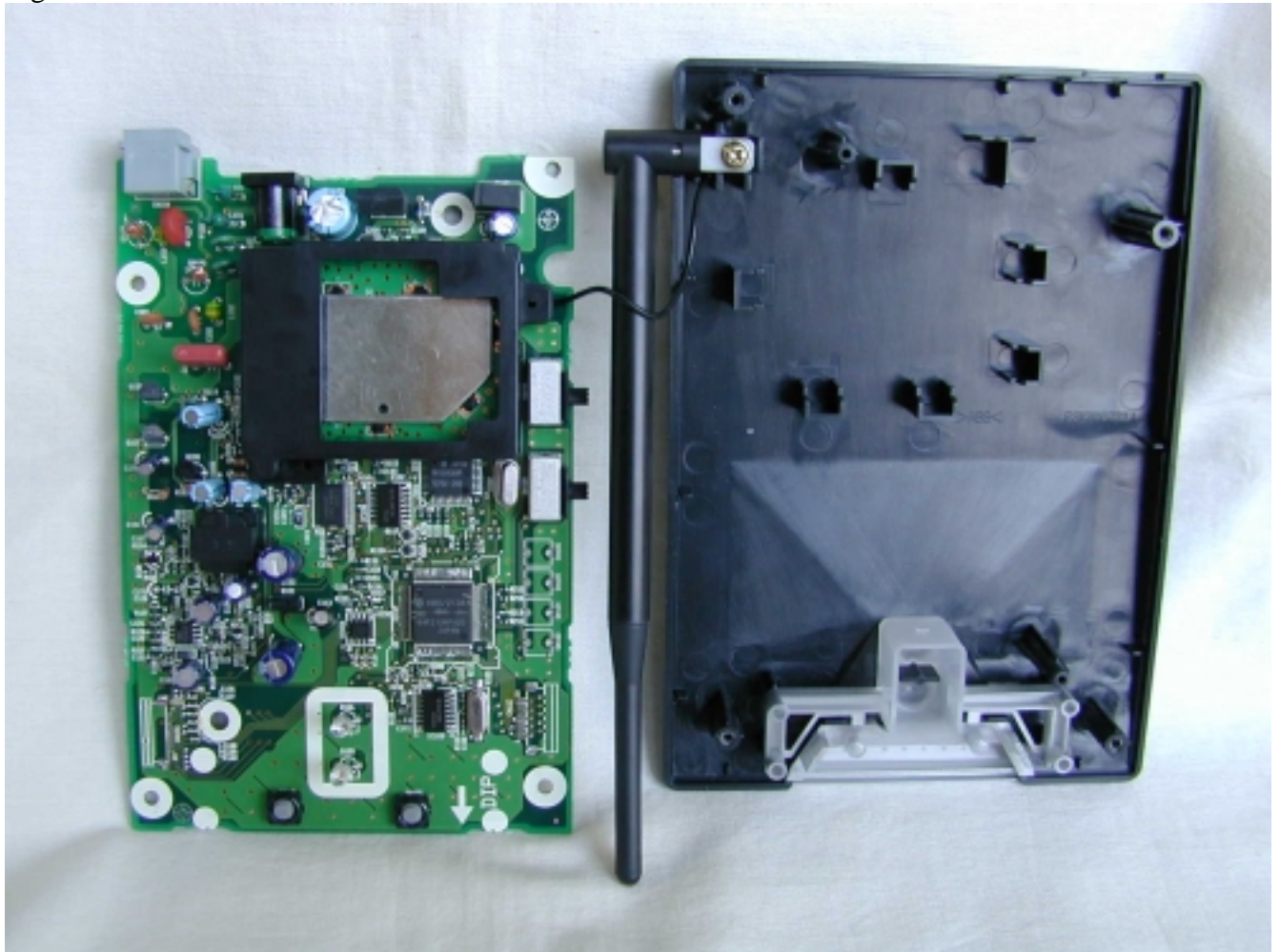




Figure 7

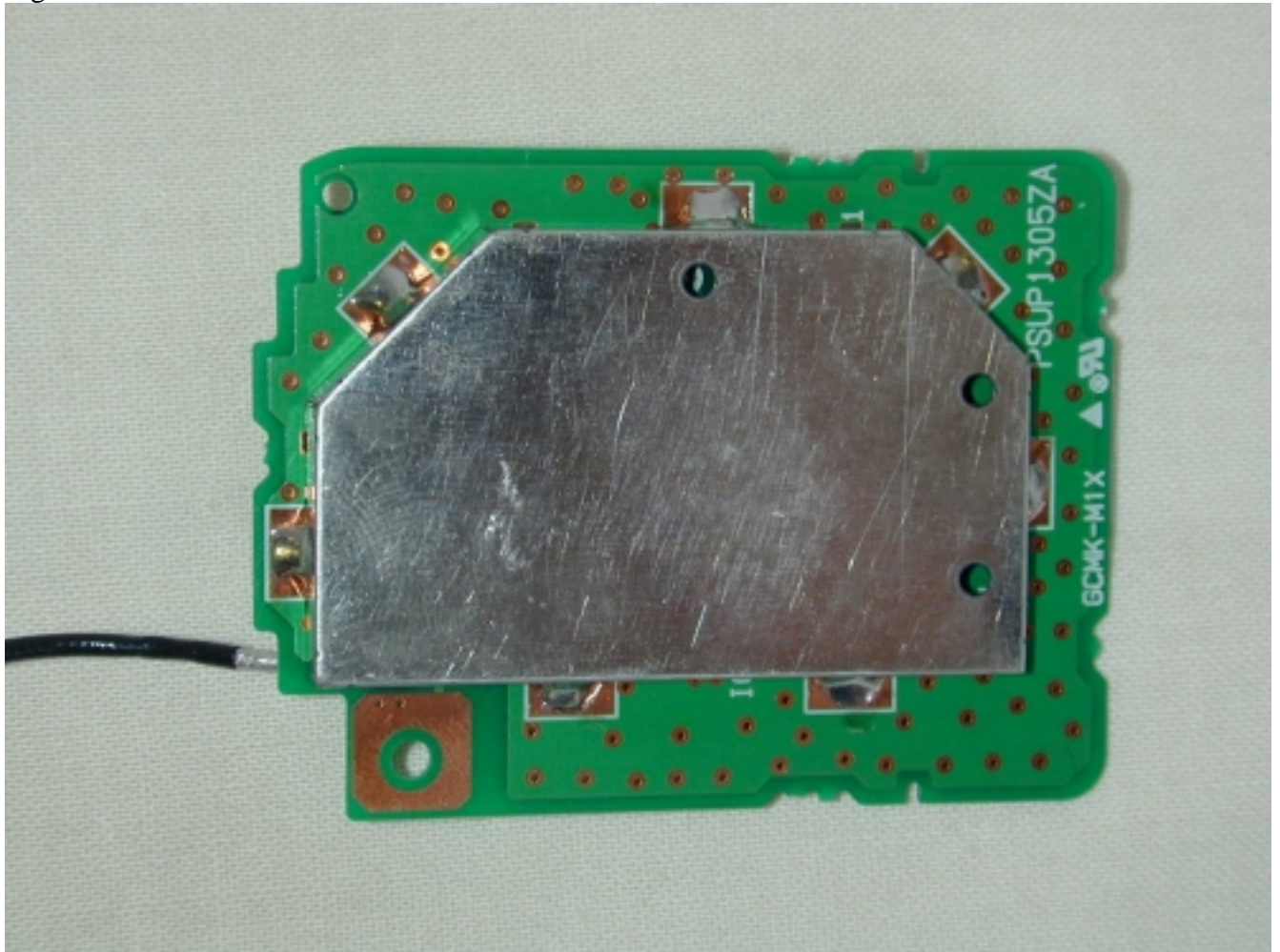


Figure 8

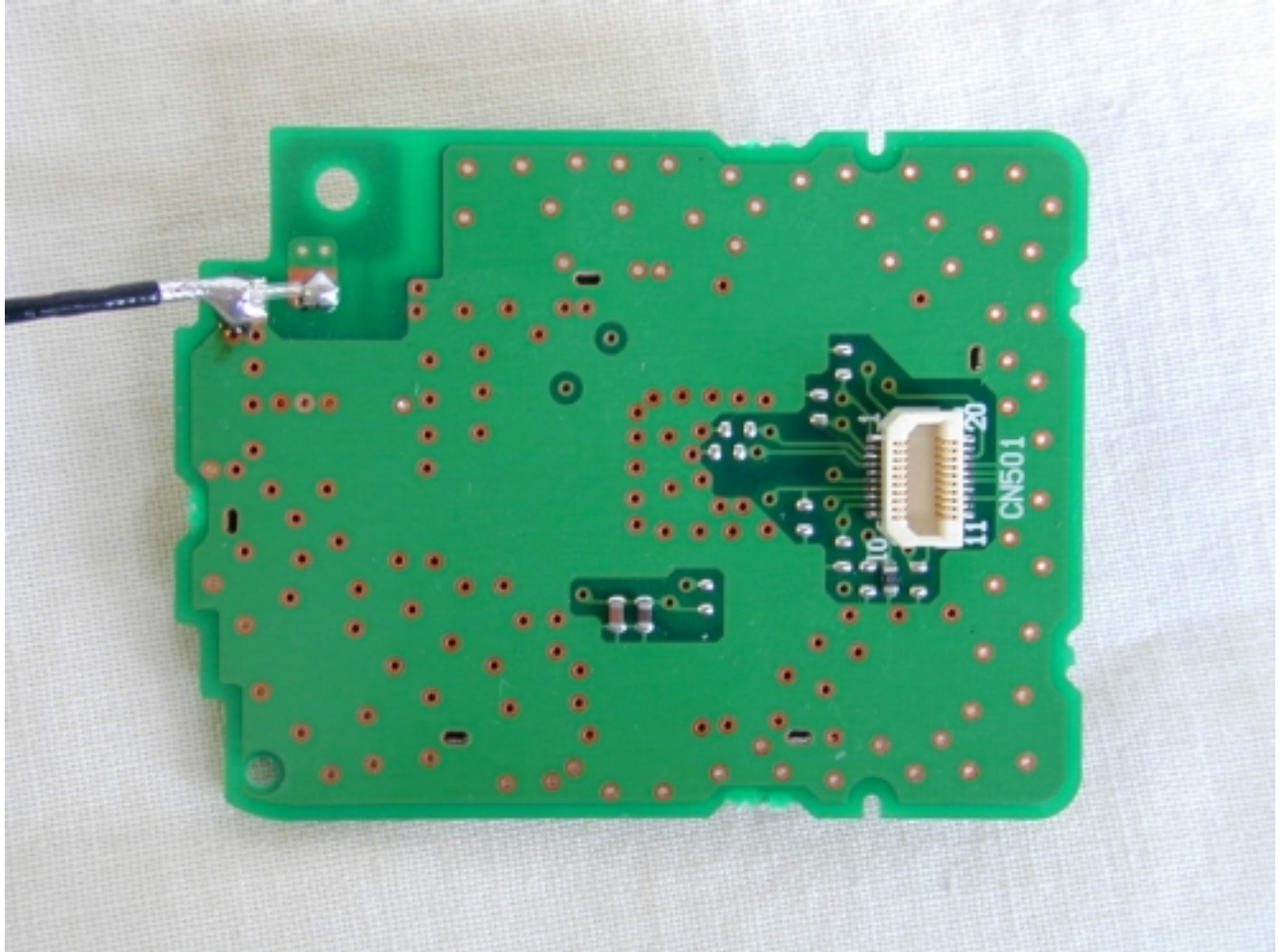


Figure 9

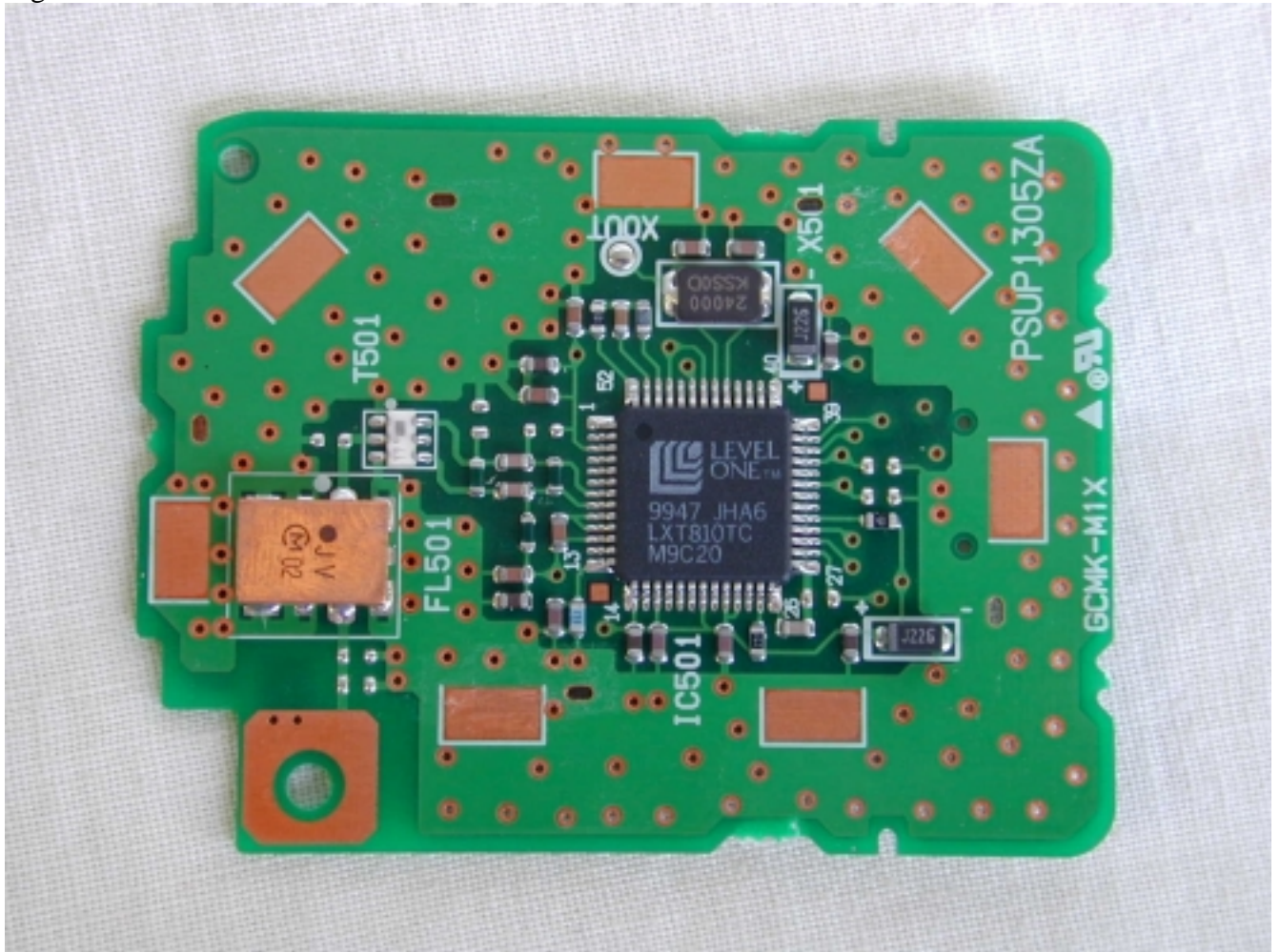


Figure 10



Figure 11





Figure 13

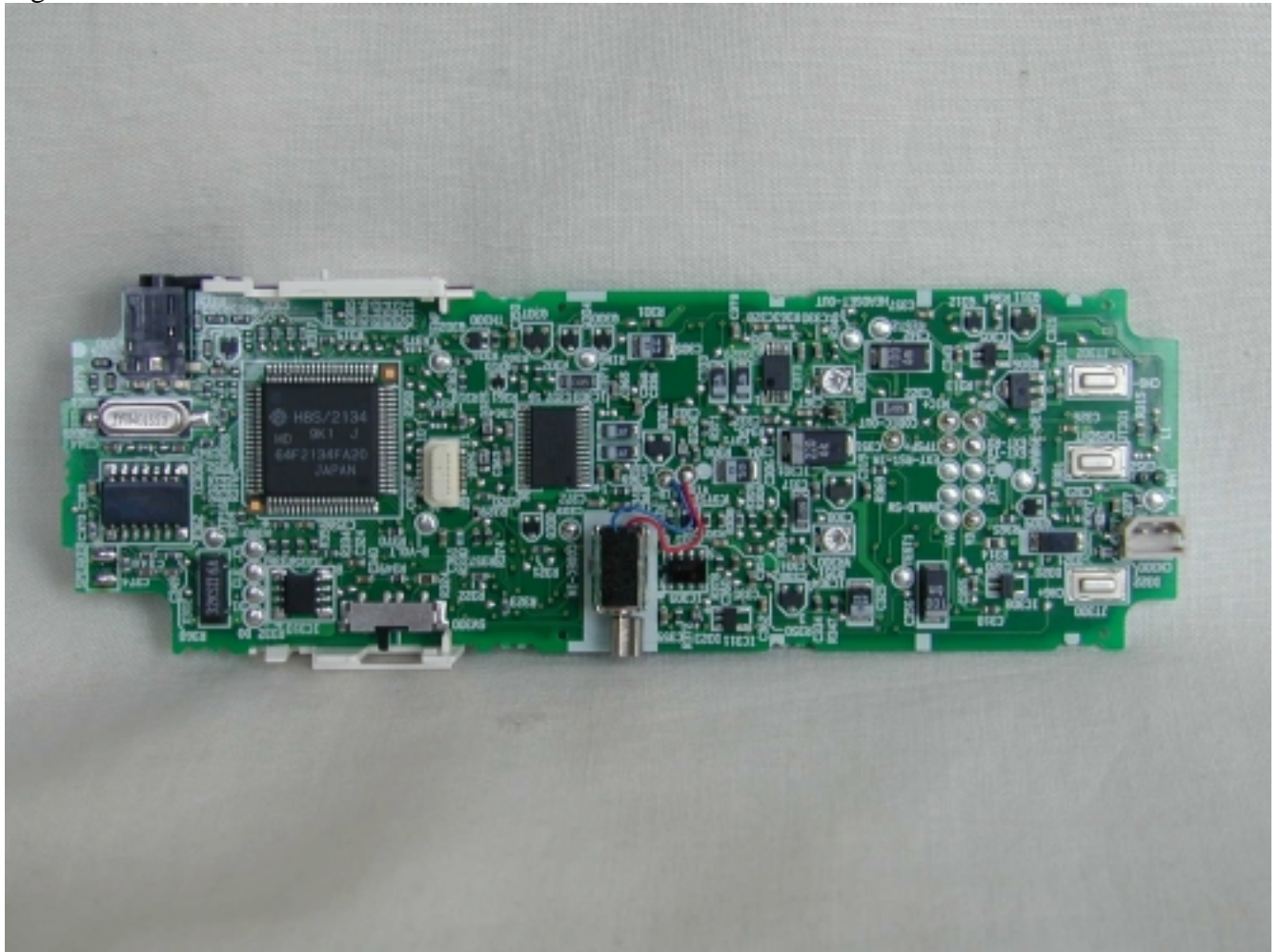


Figure 14

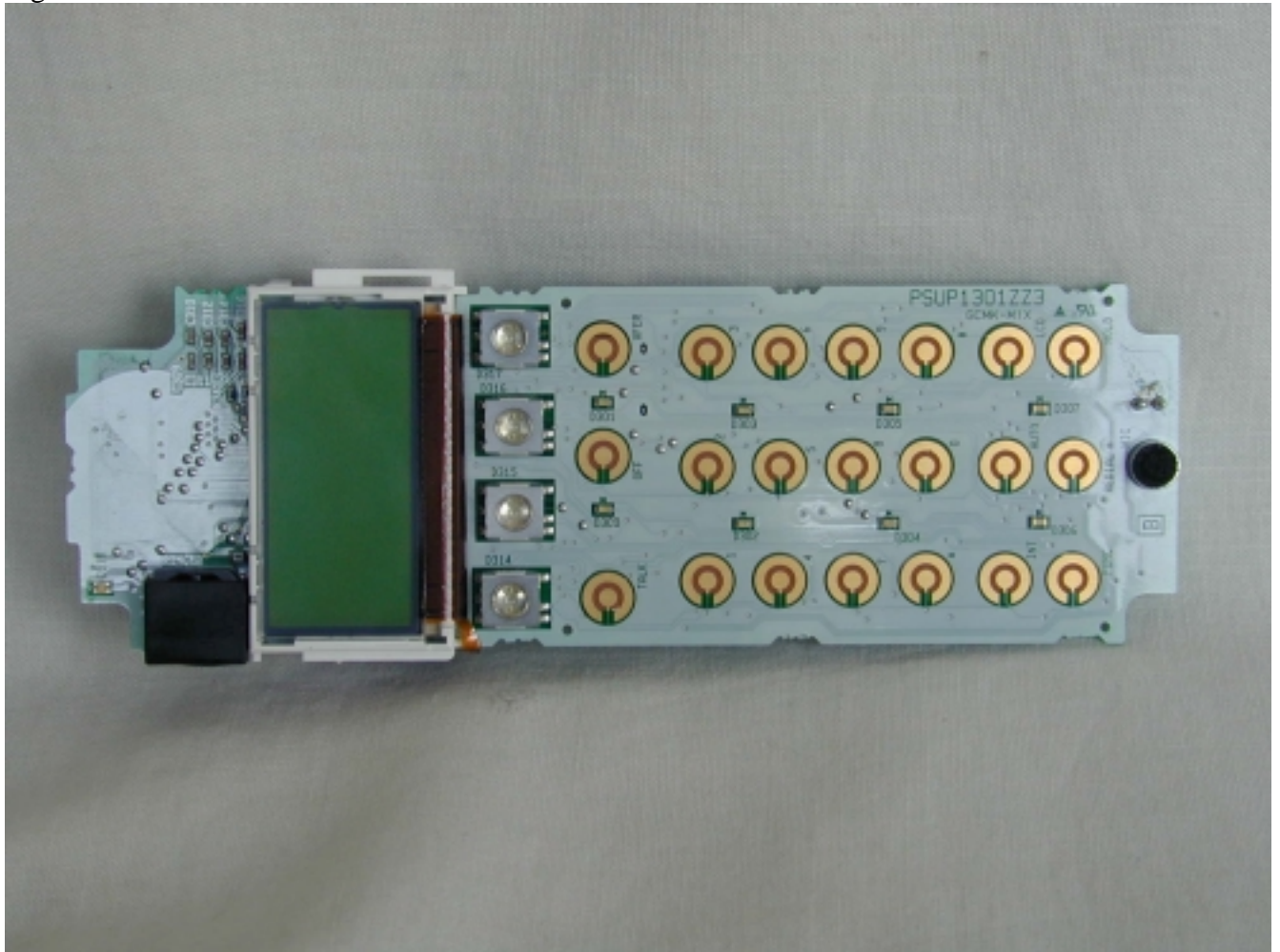


Figure 15

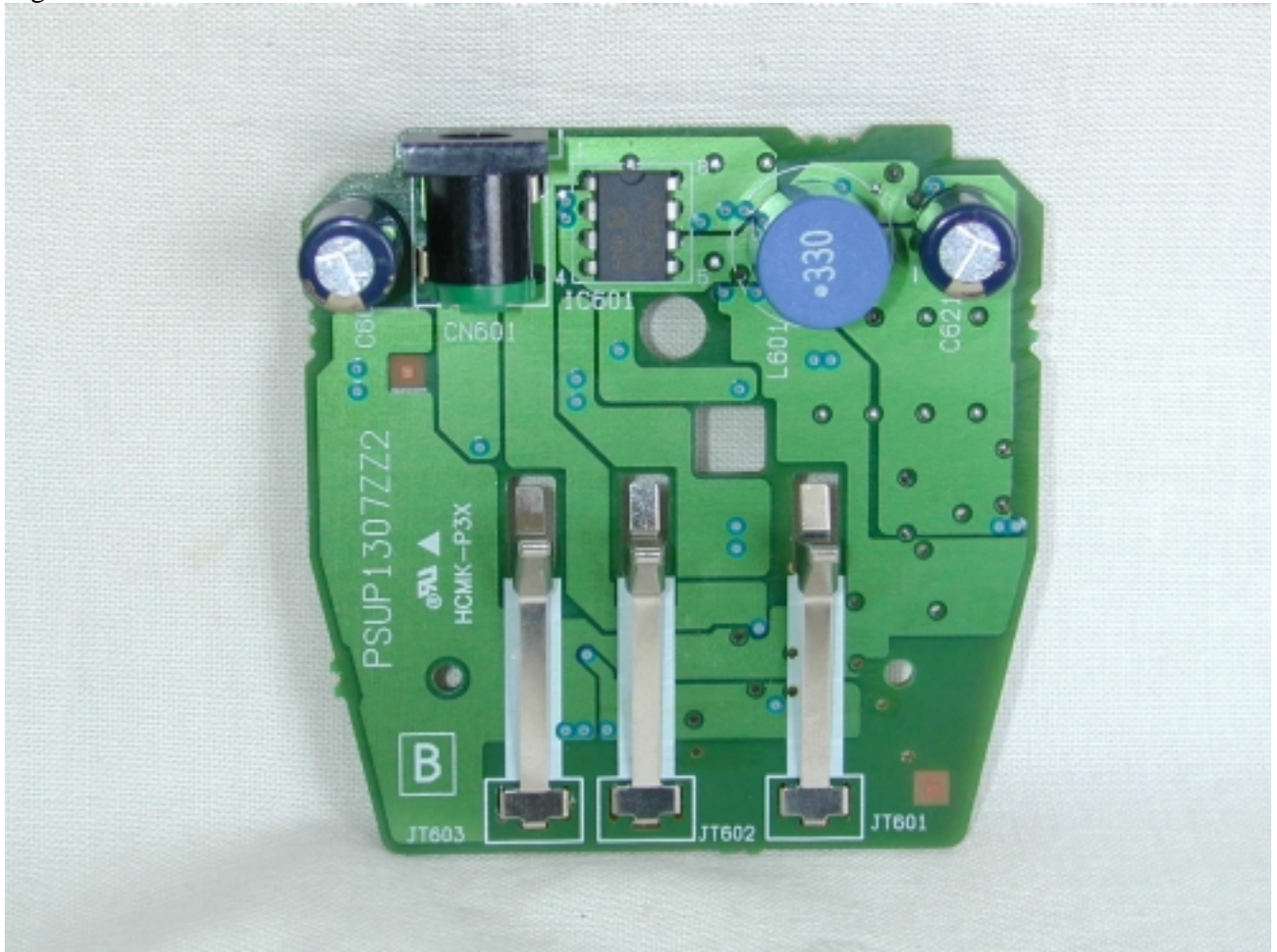


Figure 16

