

# Panasonic FCC ID: ACJ96NKX-TD7680 -- 2.4GHz Head SAR

SAM Phantom; Left Hand Section; Probe:ET3DV6 - SN1677; ConvF(4.40,4.40,4.40)

Med. Parameters 2450 MHz Brain:  $\sigma = 1.82$  mho/m  $\epsilon_r = 40.3$   $\rho = 1.00$  g/cm<sup>3</sup>; Antenna Position -- In; Crest Factor 4.0

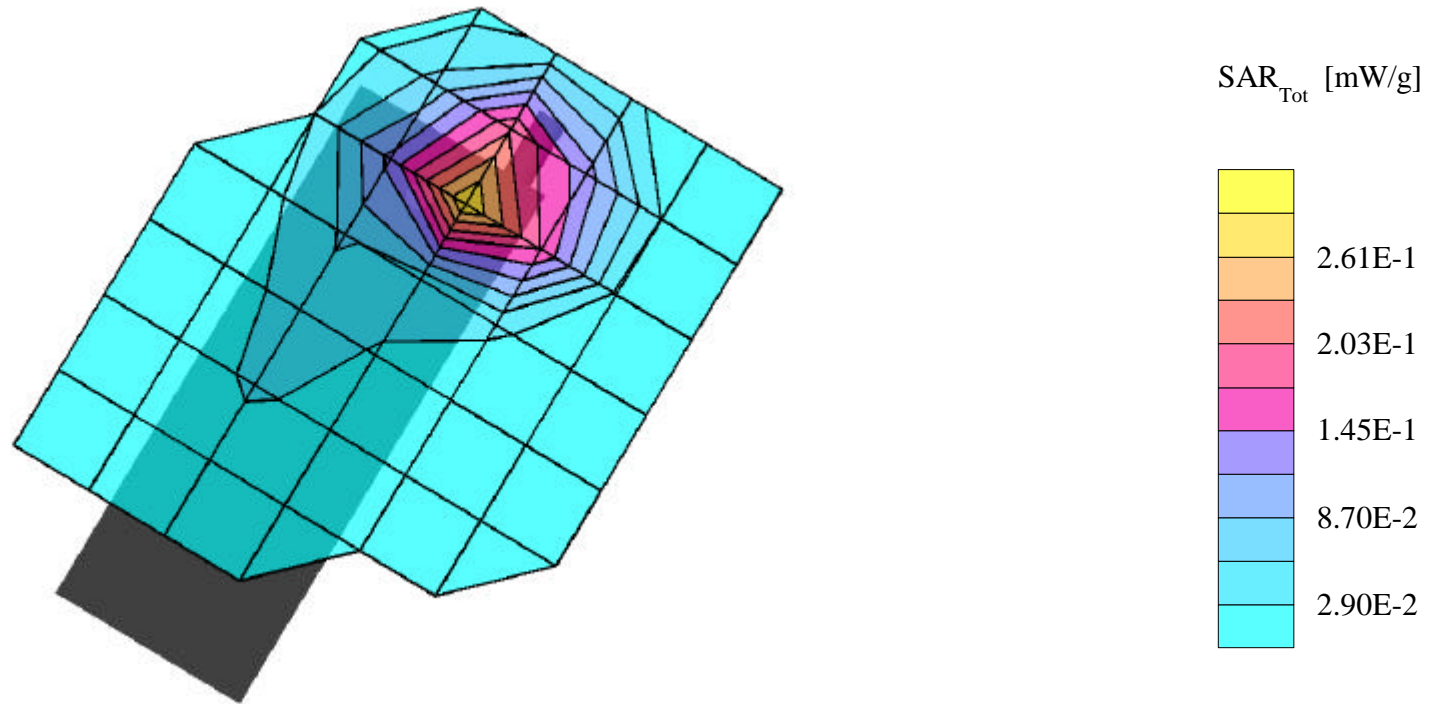
SAR (1g): 0.344 mW/g, SAR (10g): 0.170 mW/g

Panasonic 2.4GHz FHSS Cordless Handset Model:KX-TD7680

Ch.00 [2401.056MHz]; Standard Battery; Ambient Temp. = 19.4°C / Meas. Tissue Temp. = 18.3°C

Conducted Power = 24.73dBm; Left Head Phantom, Cheek/Touch position

Test Date --11/18/2002 [FCC/OET Bulletin 65 - Supplement C, July 2001]



# Panasonic FCC ID: ACJ96NKX-TD7680 -- 2.4GHz Head SAR

SAM Phantom; Right Hand Section; Probe:ET3DV6 - SN1677; ConvF(4.40,4.40,4.40)

Med. Parameters 2450 MHz Brain:  $\sigma = 1.82$  mho/m  $\epsilon_r = 40.3$   $\rho = 1.00$  g/cm<sup>3</sup>; Antenna Position -- In; Crest Factor 4.0

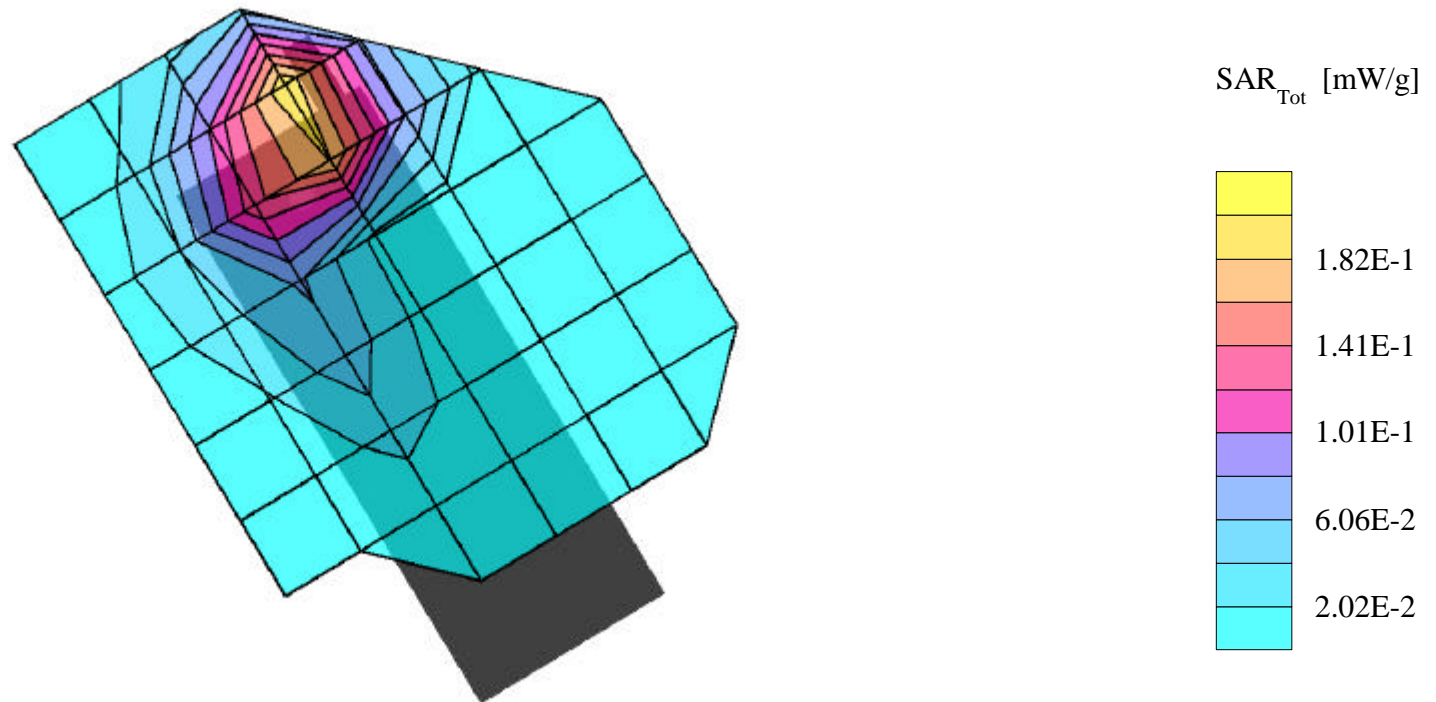
SAR (1g): 0.248 mW/g, SAR (10g): 0.125 mW/g

Panasonic 2.4GHz FHSS Cordless Handset Model:KX-TD7680

Ch.00 [2401.056MHz]; Standard Battery; Ambient Temp. = 19.4°C / Meas. Tissue Temp. = 18.3°C

Conducted Power = 24.73dBm; Right Head Phantom, Cheek/Touch position

Test Date --11/18/2002 [FCC/OET Bulletin 65 - Supplement C, July 2001]



# Panasonic FCC ID: ACJ96NKX-TD7680 -- 2.4GHz Head SAR

SAM Phantom; Left Hand Section; Probe:ET3DV6 - SN1677; ConvF(4.40,4.40,4.40)

Med. Parameters 2450 MHz Brain:  $\sigma = 1.82$  mho/m  $\epsilon_r = 40.3$   $\rho = 1.00$  g/cm<sup>3</sup>; Antenna Position -- In; Crest Factor 4.0

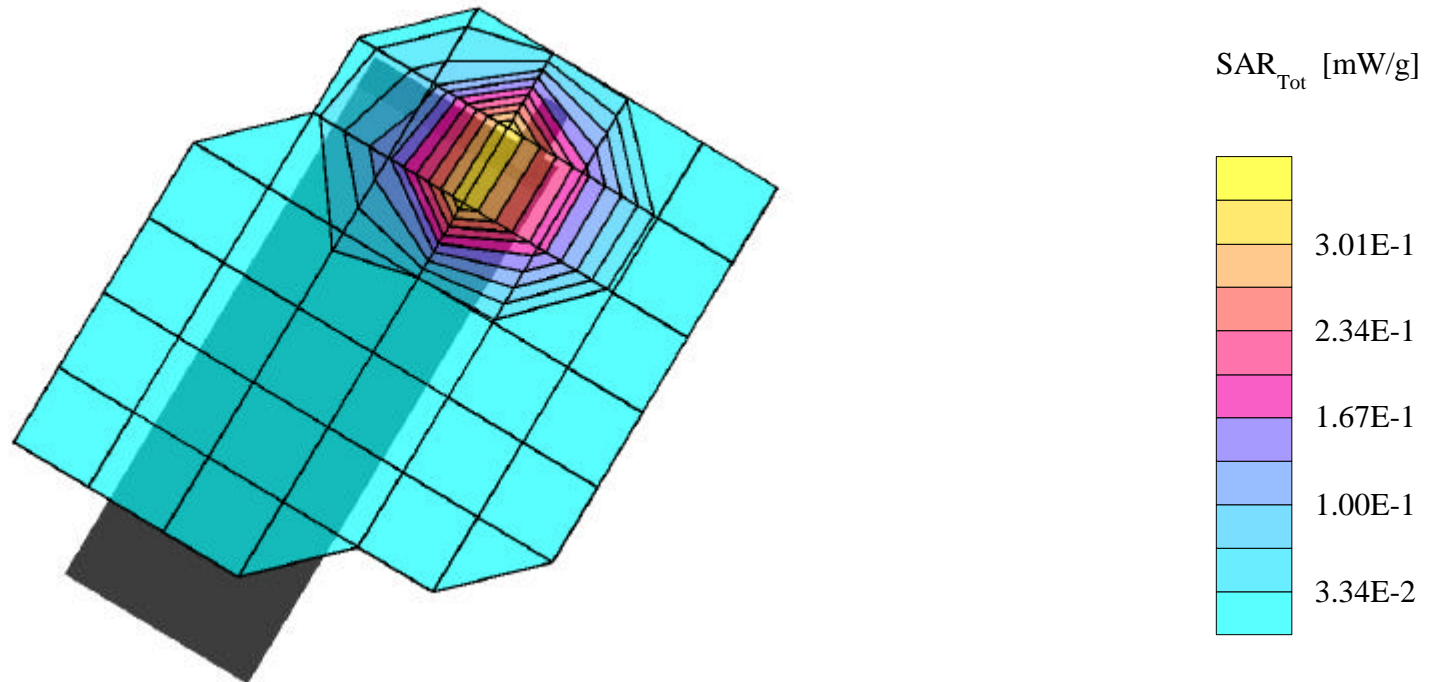
SAR (1g): 0.483 mW/g, SAR (10g): 0.238 mW/g

Panasonic 2.4GHz FHSS Cordless Handset Model:KX-TD7680

Ch.00 [2401.056MHz]; Standard Battery; Ambient Temp. = 19.4°C / Meas. Tissue Temp. = 18.3°C

Conducted Power = 24.73dBm; Left Head Phantom, Ear/15 degree Tilt position

Test Date --11/18/2002 [FCC/OET Bulletin 65 - Supplement C, July 2001]



# Panasonic FCC ID: ACJ96NKX-TD7680 -- 2.4GHz Head SAR

SAM Phantom; Right Hand Section; Probe:ET3DV6 - SN1677; ConvF(4.40,4.40,4.40)

Med. Parameters 2450 MHz Brain:  $\sigma = 1.82$  mho/m  $\epsilon_r = 40.3$   $\rho = 1.00$  g/cm<sup>3</sup>; Antenna Position -- In; Crest Factor 4.0

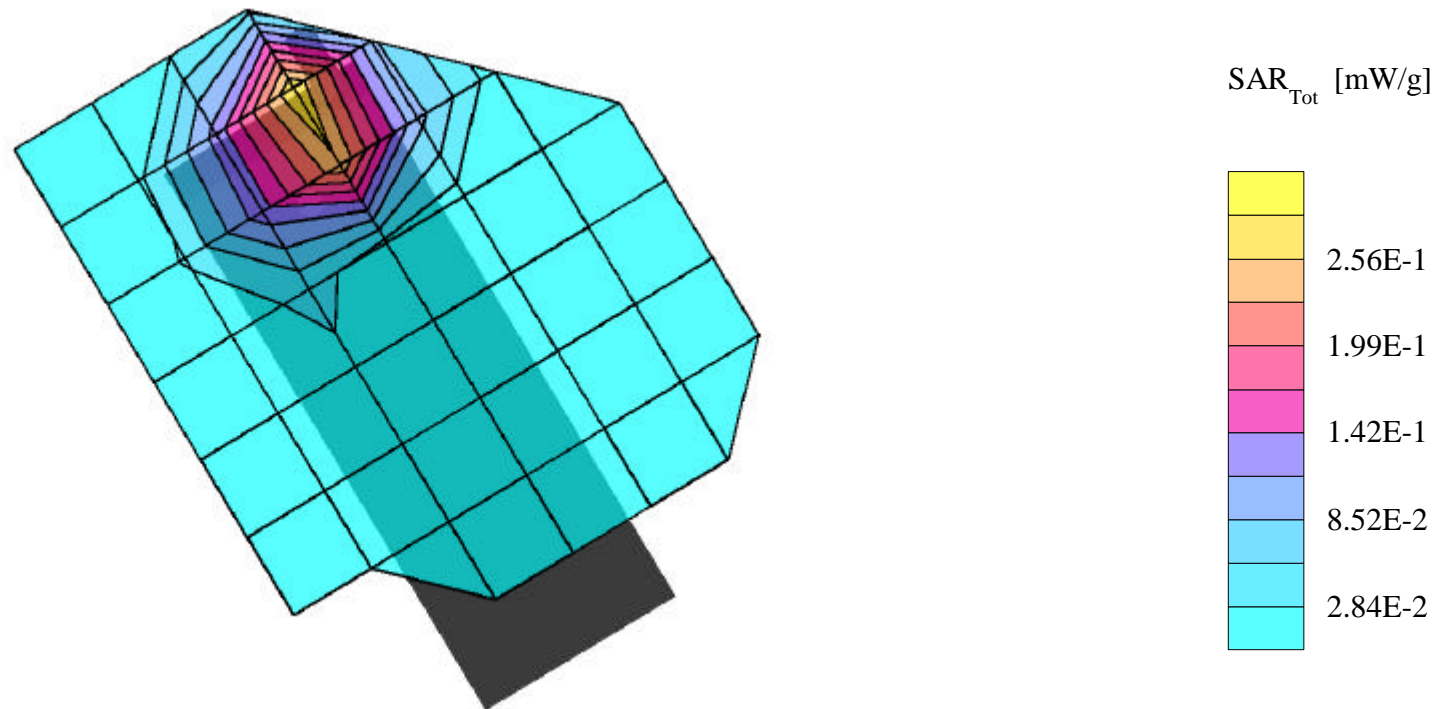
SAR (1g): 0.336 mW/g, SAR (10g): 0.168 mW/g

Panasonic 2.4GHz FHSS Cordless Handset Model:KX-TD7680

Ch.00 [2401.056MHz]; Standard Battery; Ambient Temp. = 19.4°C / Meas. Tissue Temp. = 18.3°C

Conducted Power = 24.73dBm; Right Head Phantom, Ear/15 degree Tilt position

Test Date --11/18/2002 [FCC/OET Bulletin 65 - Supplement C, July 2001]



# Panasonic FCC ID: ACJ96NKX-TD7680 -- 2.4GHz Body SAR

SAM Phantom; Flat Section; Probe:ET3DV6 - SN1677; ConvF(4.00,4.00,4.00)

Med. Parameters 2450 MHz Muscle:  $\sigma = 1.96$  mho/m  $\epsilon_r = 53.6$   $\rho = 1.00$  g/cm<sup>3</sup>; Antenna Position -- In; Crest Factor 4.0

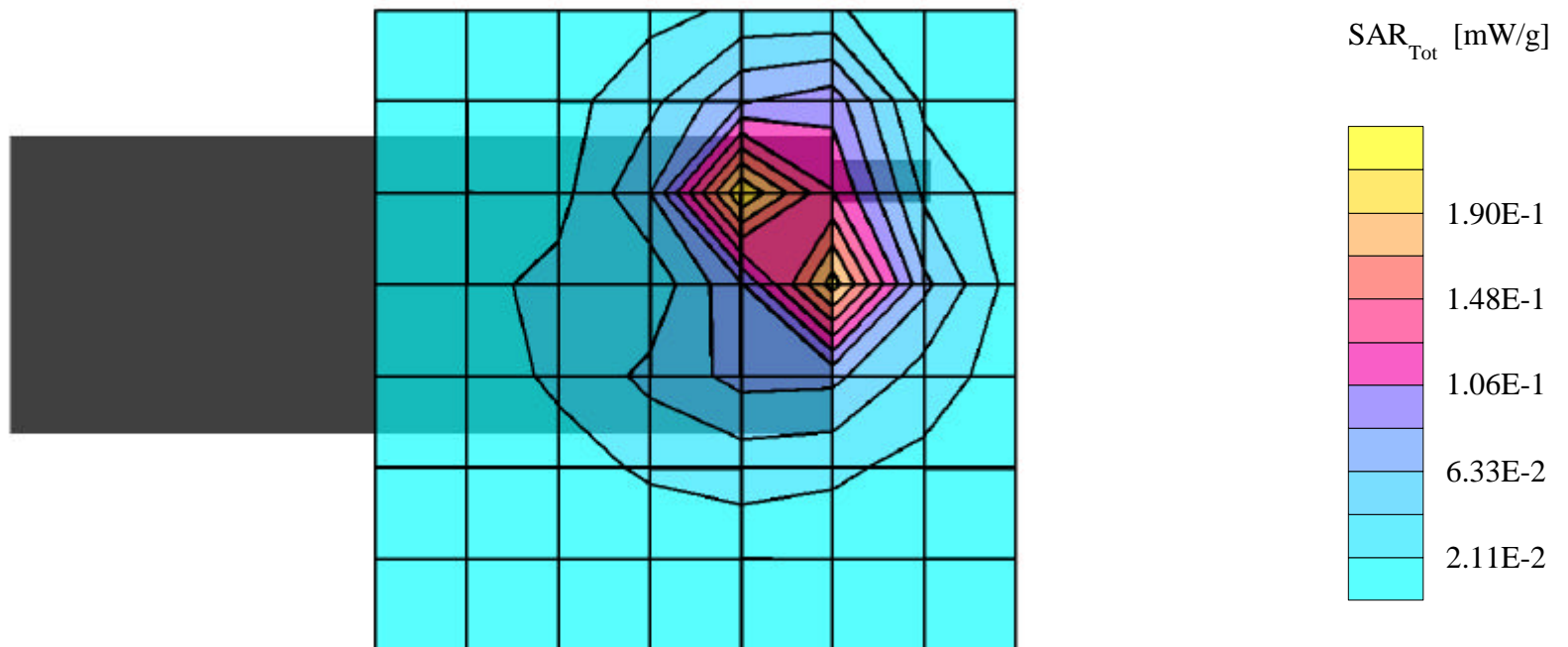
SAR (1g): 0.278 mW/g, SAR (10g): 0.129 mW/g

Panasonic 2.4GHz FHSS Cordless Handset Model:KX-TD7680

Ch.00 [2401.056MHz]; Standard Battery; Ambient Temp. = 19.4°C / Meas. Tissue Temp. = 18.3°C

Conducted Power = 24.73dBm; Spacing = 0.6cm from back (antenna side) of EUT to flat phantom, with Belt Clip/No Holster

Test Date --11/18/2002 [FCC/OET Bulletin 65 - Supplement C, July 2001]



# Panasonic FCC ID: ACJ96NKX-TD7680 -- 2.4GHz Body SAR

SAM Phantom; Flat Section; Probe:ET3DV6 - SN1677; ConvF(4.00,4.00,4.00)

Med. Parameters 2450 MHz Muscle:  $\sigma = 1.96$  mho/m  $\epsilon_r = 53.6$   $\rho = 1.00$  g/cm<sup>3</sup>; Antenna Position -- In; Crest Factor 4.0

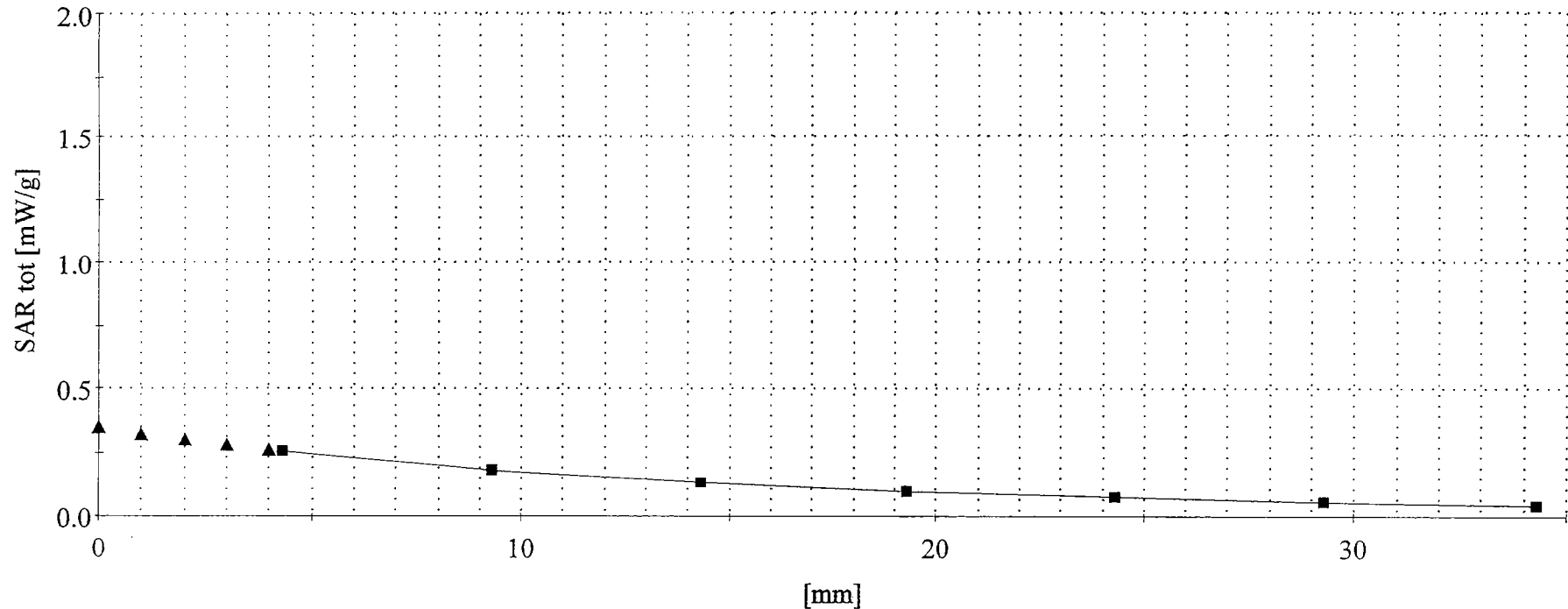
SAR (1g): 0.278 mW/g, SAR (10g): 0.129 mW/g

Panasonic 2.4GHz FHSS Cordless Handset Model:KX-TD7680

Ch.00 [2401.056MHz]; Standard Battery; Ambient Temp. = 19.4°C / Meas. Tissue Temp. = 18.3°C

Conducted Power = 24.73dBm; Spacing = 0.6cm from back (antenna side) of EUT to flat phantom, with Belt Clip/No Holster

Test Date --11/18/2002 [FCC/OET Bulletin 65 - Supplement C, July 2001]



# Panasonic FCC ID: ACJ96NKX-TD7680 -- 2.4GHz Head SAR

SAM Phantom; Left Hand Section; Probe:ET3DV6 - SN1677; ConvF(4.40,4.40,4.40)

Med. Parameters 2450 MHz Brain:  $\sigma = 1.82$  mho/m  $\epsilon_r = 40.3$   $\rho = 1.00$  g/cm<sup>3</sup>; Antenna Position -- In; Crest Factor 4.0

SAR (1g): 0.483 mW/g, SAR (10g): 0.238 mW/g

Panasonic 2.4GHz FHSS Cordless Handset Model:KX-TD7680

Ch.00 [2401.056MHz]; Standard Battery; Ambient Temp. = 19.4°C / Meas. Tissue Temp. = 18.3°C

Conducted Power = 24.73dBm; Left Head Phantom, Ear/15 degree Tilt position

Test Date --11/18/2002 [FCC/OET Bulletin 65 - Supplement C, July 2001]

