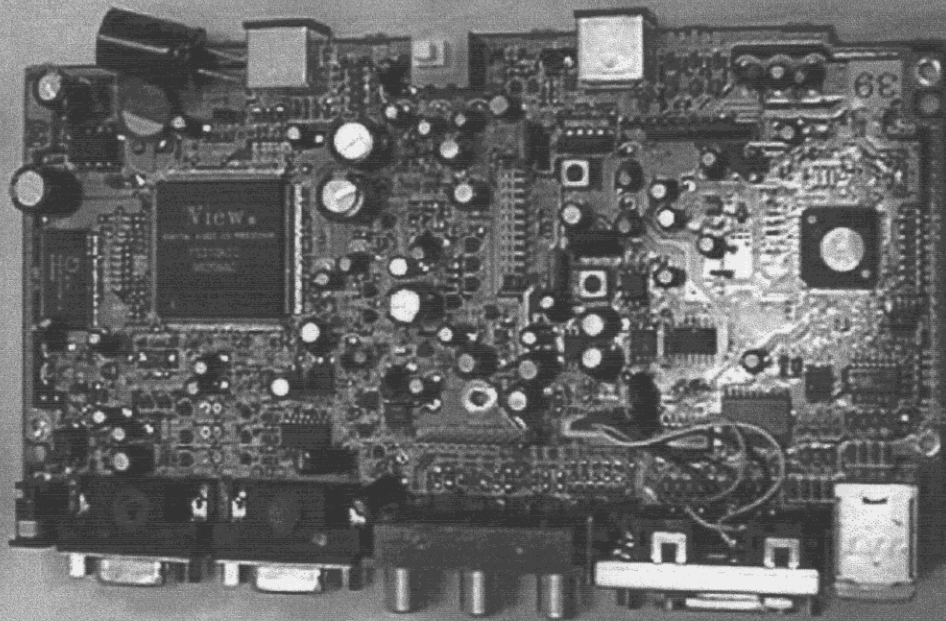
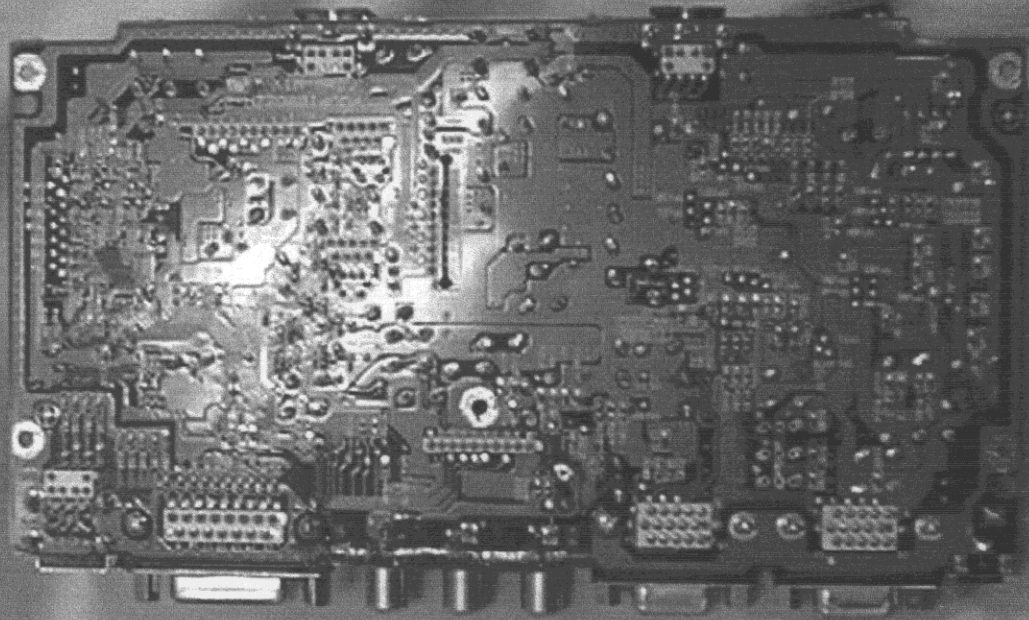


Main Printed Circuit Board (Component-side)



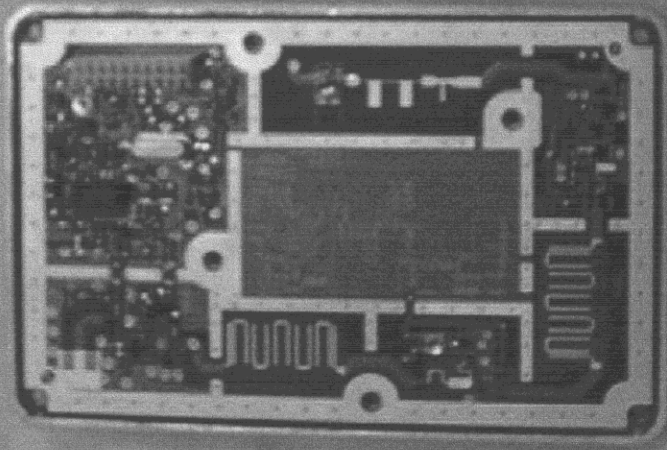
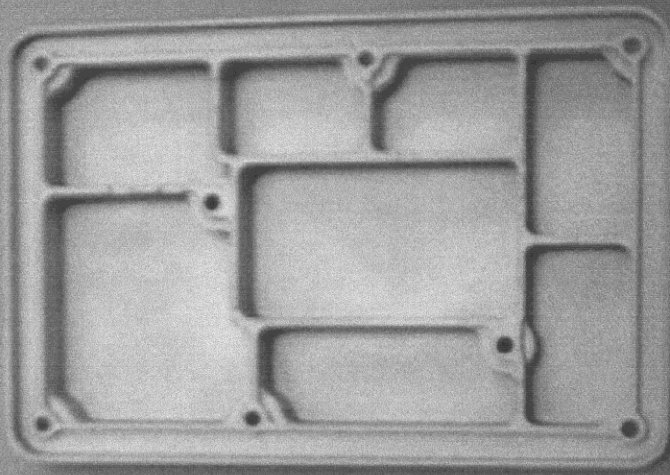
Main Printed Circuit Board (Copper-Side)



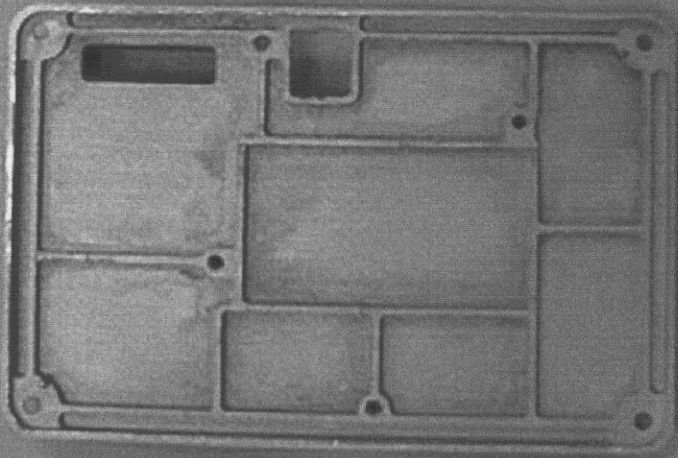
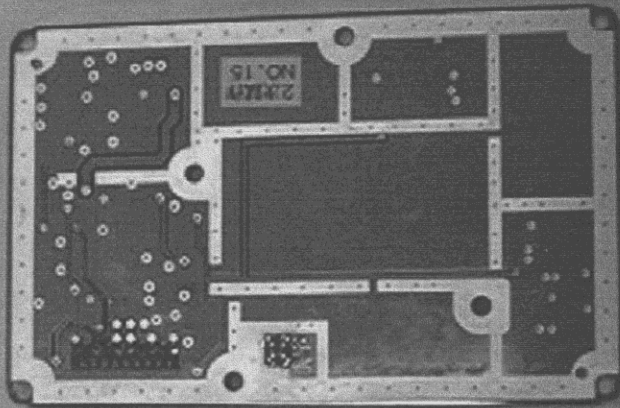
Tx RF Unit (with covers)



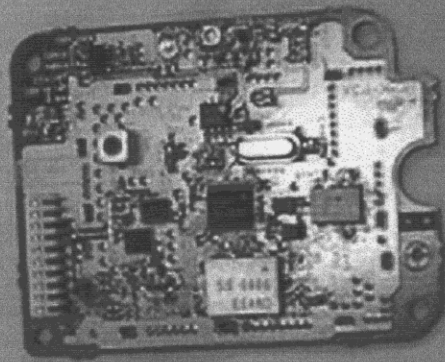
Tx RF Printed Circuit Board (Component-side)



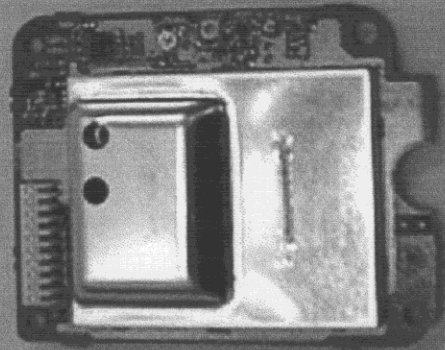
Tx RF Printed Circuit Board (Copper-Side)



Rx RF Printed Circuit Board (Component-Side)



← Without
Cover



← With
Cover

Rx RF Printed Circuit Board (Copper-Side)

