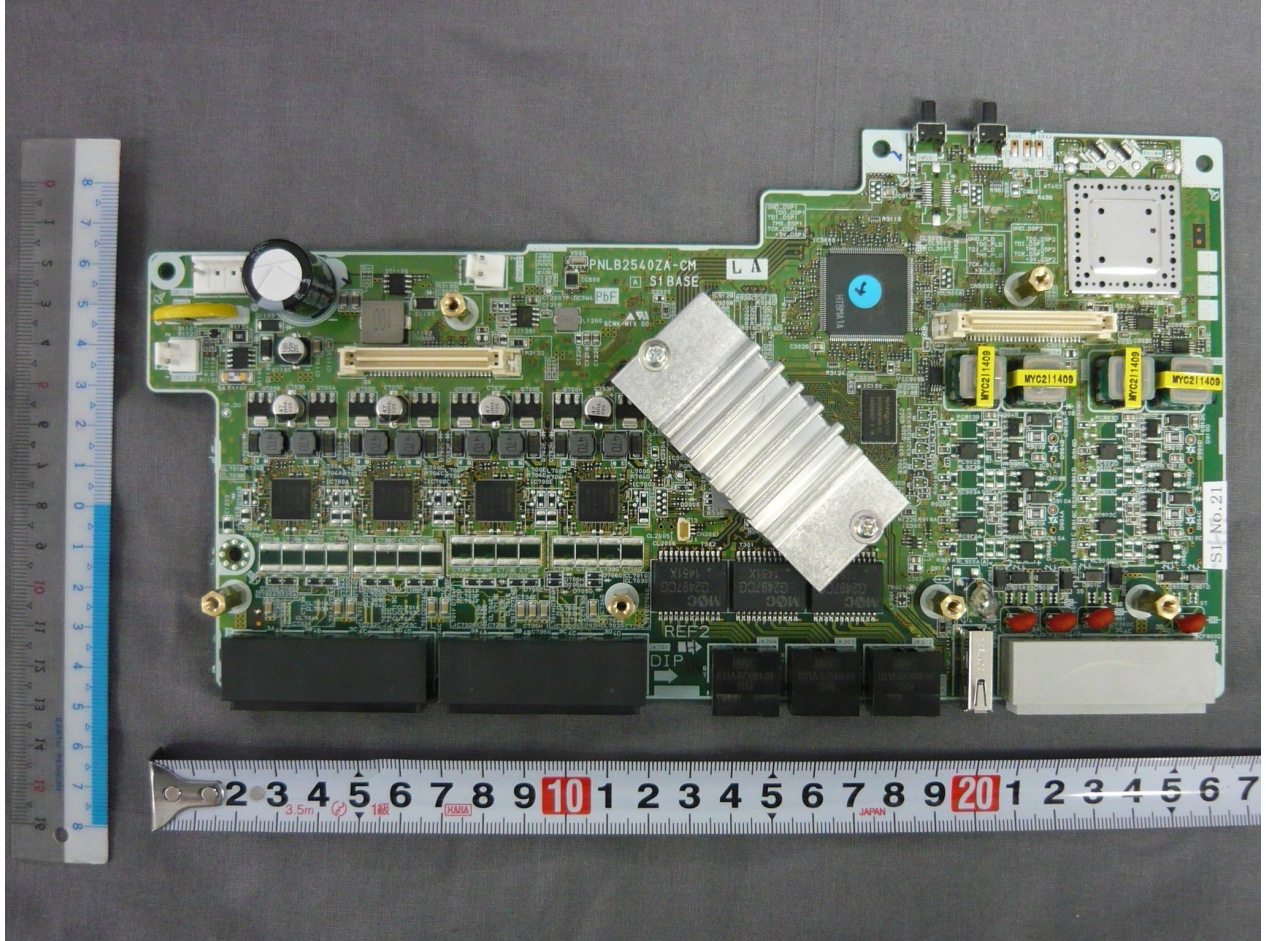
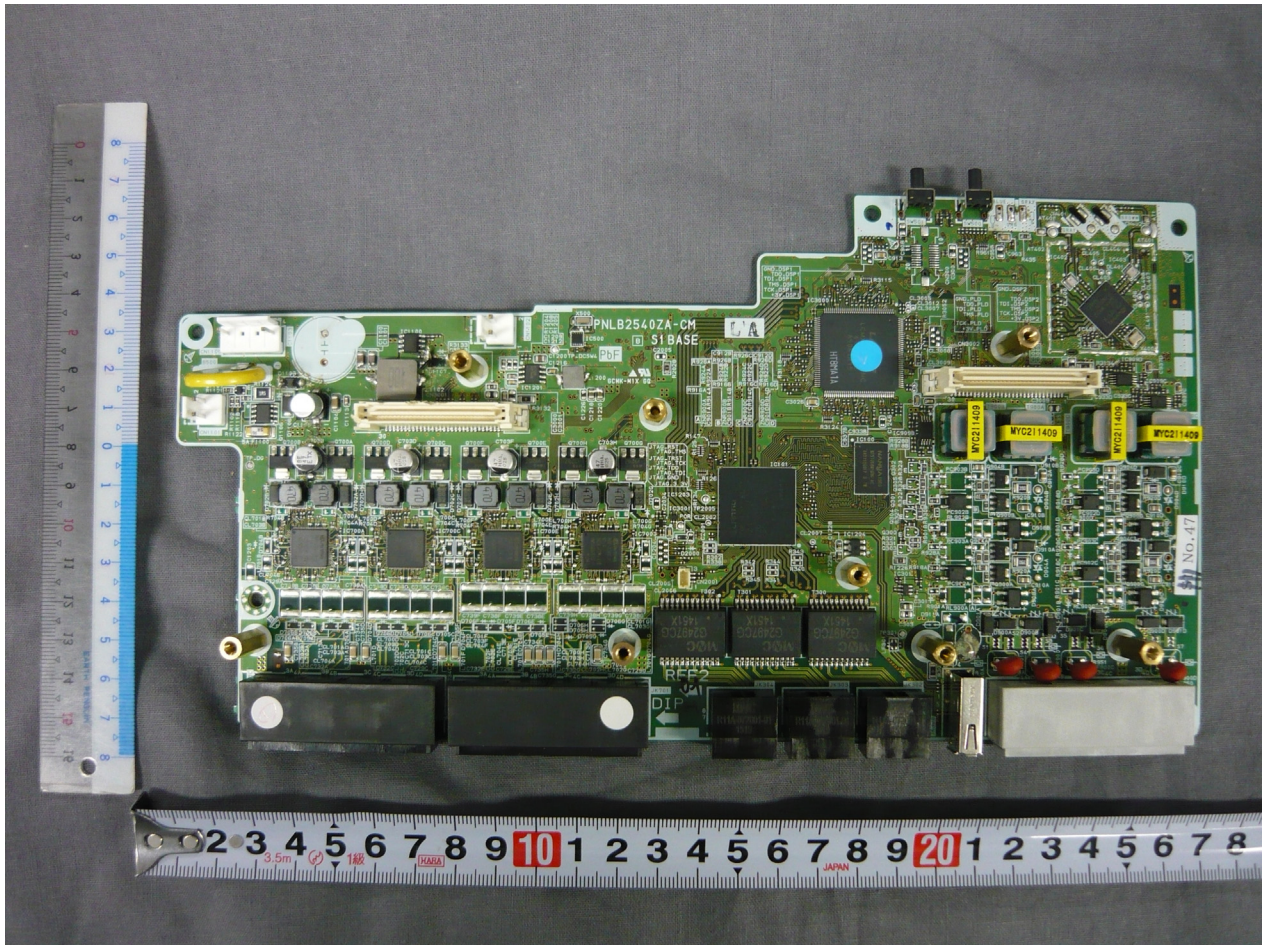


EXHIBIT D-2  
INTERNAL PHOTOGRAPHS



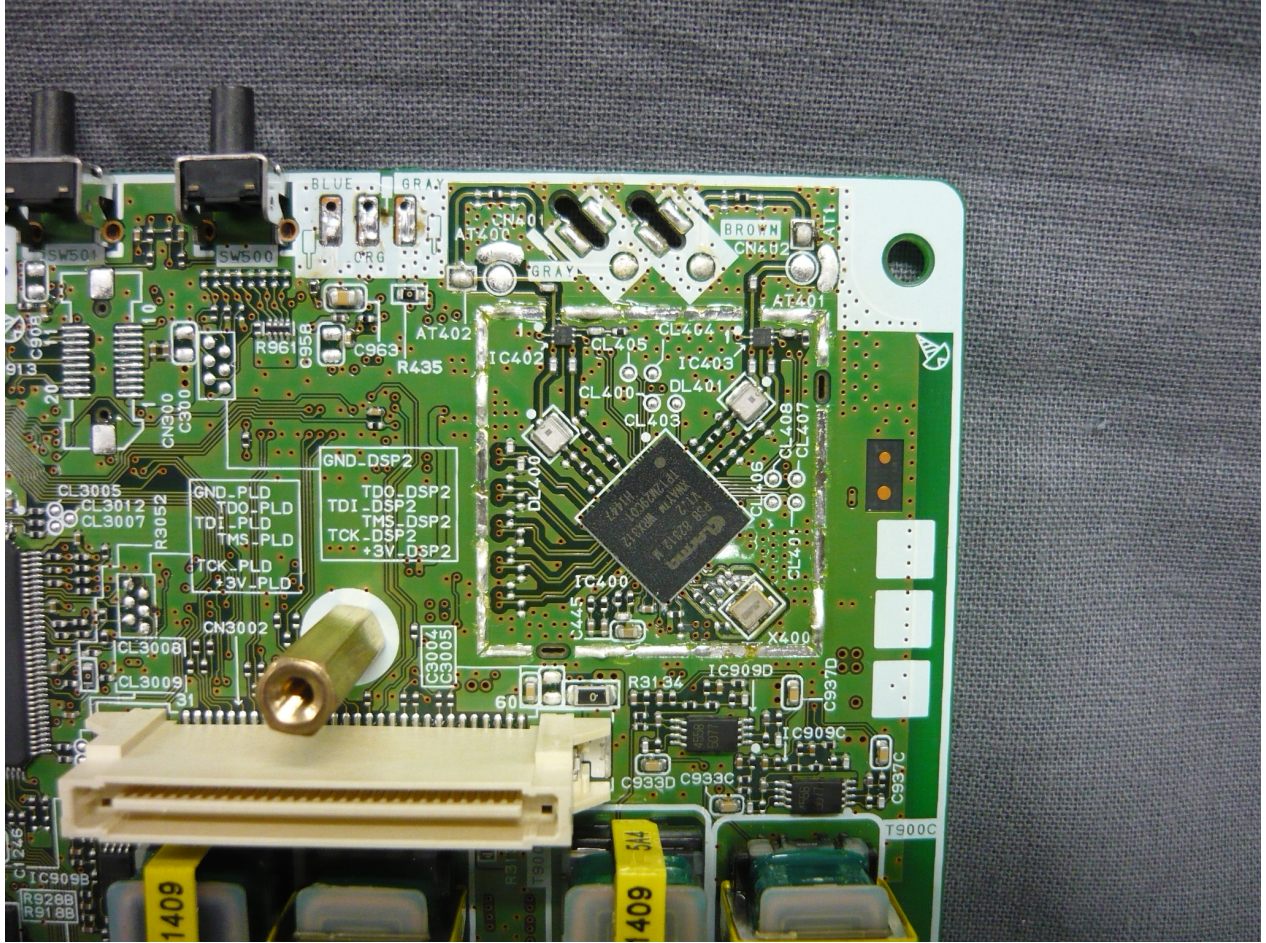
Main board front

EXHIBIT D-2  
INTERNAL PHOTOGRAPHS



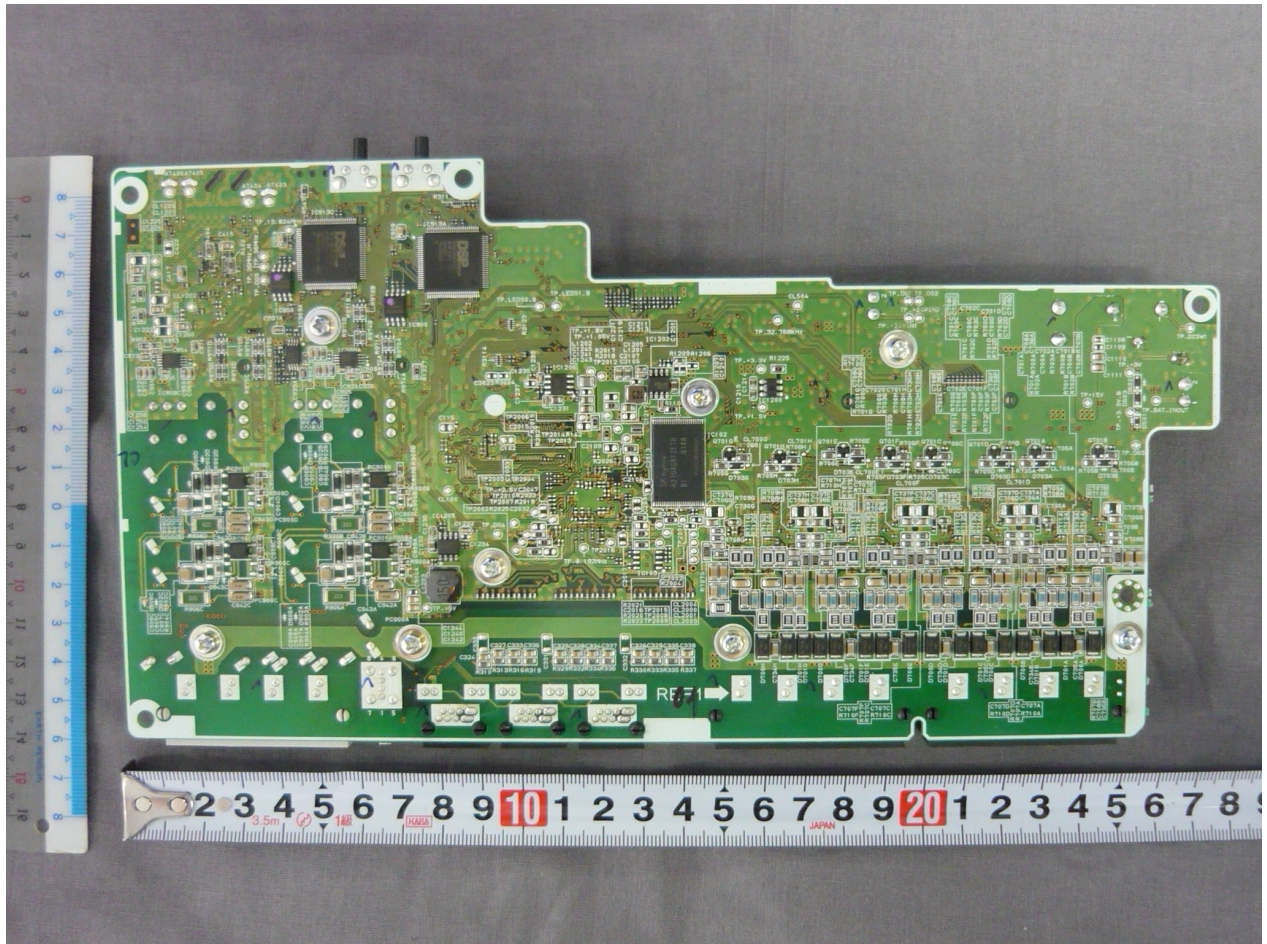
Main board front (Heatsink of CPU and shield case of BT module are removed)

EXHIBIT D-2  
INTERNAL PHOTOGRAPHS



Main board front (under the shield case of radio block)

INTERNAL PHOTOGRAPHS



Main board rear