

**APPENDIX 3 : Test instruments**

## 1. Equipment used

Control No.	Name of Equipment	Manufacture	Model number	Serial number	Calibration	
					Last Cal	due date
MAEC-01	Anechoic Chamber	TDK	Semi Anechoic Chamber 10m	DA-06881	2006/11/01	2007/10/31
MTR-01	Test Receiver	Rohde & Schwarz	ESI40	-	2007/01/09	2009/01/31
MCC-15	Microwave Cable 1G-26.5GHz 1m	Suhner	SUCOFLEX 104	233010/4	2007/02/22	2008/02/29
MPA-01	Pre Amplifier	Agilent	8449B	3008A01671	2007/02/15	2008/02/29
MAT-23	Attenuator(10dB) DC-18GHz	Orient Microwave	BX10-0476-00	-	2006/03/18	2007/03/31
MCC-18	Microwave Cable 1G-26.5GHz 5m	Suhner	SUCOFLEX 104	233549/4	2007/02/22	2008/02/29
MHA-05	Horn Antenna 1-18GHz	Schwarzbeck	BBHA9120D	257	2007/01/30	2008/01/31
MSTW-14	EMI measurement program	TSJ	TEPTO-DV	-	-	-
MOS-01	Digital Humidity Indicator	N.T	NT-1800	80003970	2006/11/01	2007/10/31
MJM-01	Measure	KDS	ES19-55	-	-	-
MPM-01	Power Meter	Agilent	E4417A	GB41290639	2007/01/10	2008/01/31
MPSE-01	Power Sensor	Agilent	E9300B	US40010300	2006/12/20	2007/12/31
MPSE-03	Power sensor	Agilent	E9327A	US40440576	2007/01/10	2008/01/31
MAT-15	Attenuator(30dB)	Agilent	US40010300	08498-60012	2006/12/20	2007/12/31
MSG-01	Signal Genelator	Rohde & Schwarz	SMR40	100023	2007/01/18	2008/01/31
MRFA-08	Pre Amplifier	TSJ	TCBP0206	-	2006/03/11	2007/3/31
MBTR14	Dual Directional Coupler	Hewlett Packard	87300C OPT020	3239A01236	N/A	N/A
MNA-01	Network Analyzer	Agilent	E8358A	US41080381	2006/02/10	2009/02/09
MPB-03	Dosimetric E-Field Probe	Schmid&Partner Engineering AG	EX3DV3	3507	2006/05/26	2007/05/31
MDAE-01	Data Acquisition Electronics	Schmid&Partner Engineering AG	DAE3 V1	509	2006/06/15	2007/06/31
MSTW-16	SAR measurement System	Schmid&Partner Engineering AG	DASY4	1021834	N/A	N/A
MDA-08	5GHz System Validation Dipole	Schmid&Partner Engineering AG	D5GHzV2	1020	2006/5/24	2008/5/31
MPS-01	SAM Phantom	Schmid&Partner Engineering AG	SAM Twin Phantom V4.0	1196	N/A	N/A
MOS-05	Thermo-Hygrometer	Custom	CTH-190	810201	2006/04/25	2008/04/31
MOS-10	Digital thermometer	HANNA	Checktemp-2	MOS-10	2005/03/07	2007/03/31
	Head 5800MHz	N/A	N/A	N/A	Daily check 5%	Target value ±
	Body 5800MHz	N/A	N/A	N/A	Daily check 5%	Target value ±
	SAR room	-	-	-	Daily check	Ambient Noise <0.012W/kg

UL Apex Co., Ltd.

Head Office EMC Lab.

4383-326 Asama-cho, Ise-shi, Mie-ken 516-0021 JAPAN

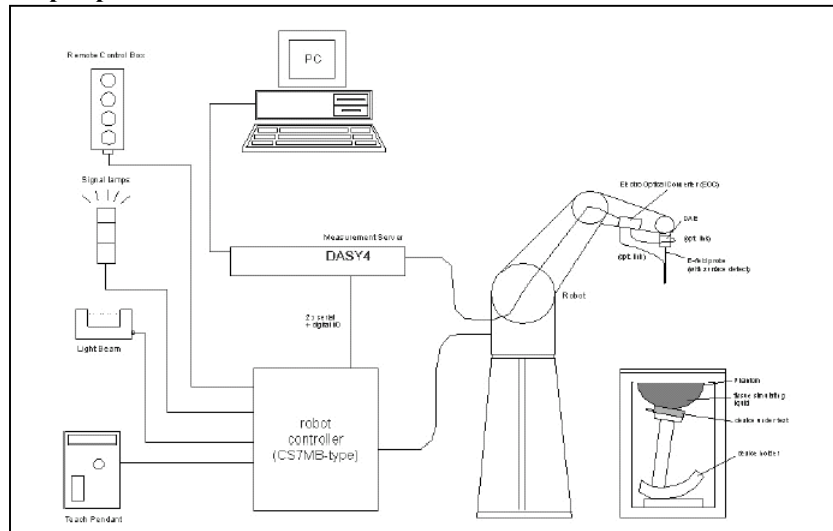
Telephone: +81 596 24 8116

Facsimile: +81 596 24 8124

## 2. Dosimetry assessment setup

These measurements were performed with the automated near-field scanning system DASY4 from Schmid & Partner Engineering AG (SPEAG). The system is based on a high precision robot (working range greater than 0.9 m), which positions the probes with a positional repeatability of better than +/- 0.02 mm. Special E- and H-field probes have been developed for measurements close to material discontinuity, the sensors of which are directly loaded with a Schottky diode and connected via highly resistive lines to the data acquisition unit. The SAR measurements were conducted with the dosimetry probe EX3DV3, SN: 3507 (manufactured by SPEAG), designed in the classical triangular configuration and optimized for dosimetric evaluation. The probe has been calibrated according to the procedure described in [2] with accuracy of better than +/-10%. The spherical isotropy was evaluated with the procedure described in [3] and found to be better than +/-0.25 dB. The phantom used was the SAM Twin Phantom as described in FCC supplement C, IEEE P1528 and CENELEC EN50361.

### 3. Configuration and peripherals



The DASYS4 system for performing compliance tests consist of the following items:

1. A standard high precision 6-axis robot (Stäubli RX family) with controller and software.  
An arm extension for accommodating the data acquisition electronics (DAE).
2. A dosimetric probe, i.e., an isotropic E-field probe optimized and calibrated for usage in tissue simulating liquid. The probe is equipped with an optical surface detector system.
3. A data acquisition electronic (DAE), which performs the signal amplification, signal multiplexing, AD-conversion, offset measurements, mechanical surface detection, collision detection, etc. The unit is battery powered with standard or rechargeable batteries. The signal is optically transmitted to the EOC.
4. The Electro-optical converter (EOC) performs the conversion between optical and electrical of the signals for the digital communication to the DAE and for the analog signal from the optical surface detection.  
The EOC is connected to the measurement server.
5. The function of the measurement server is to perform the time critical tasks such as signal filtering, control of the robot operation and fast movement interrupts.
6. A probe alignment unit which improves the (absolute) accuracy of the probe positioning.
7. A computer operating Windows 2000.
8. DASYS4 software.
9. Remote control with teaches pendant and additional circuitry for robot safety such as warning lamps, etc.
10. The SAM twin phantom enabling testing left-hand and right-hand usage.
11. The device holder for handheld mobile phones.
12. Tissue simulating liquid mixed according to the given recipes.
13. Validation dipole kits allowing to validate the proper functioning of the system.

**UL Apex Co., Ltd.**

**Head Office EMC Lab.**

4383-326 Asama-cho, Ise-shi, Mie-ken 516-0021 JAPAN

Telephone: +81 596 24 8116

Facsimile: +81 596 24 8124

## 4. System components

### 4.1 EX3DV3 Probe Specification

**Construction:**

Symmetrical design with triangular core  
Built-in shielding against static charges  
PEEK enclosure material (resistant to organic solvents, e.g., glycol ether)

**Calibration:**

Basic Broad Band Calibration in air : 10-3000 MHz

**Calibration(S/N 3507):**

Basic Broad Band Calibration in air : 10-3000 MHz  
Conversion Factors(Head and Body): 450MHz,900 MHz,1810MHz, 2450MHz,  
5.2GHz,5.6GHz,5.8GHz

**Frequency:**

10 MHz to > 6GHz; Linearity: +/-0.2 dB(30 MHz to 3 GHz)

**Directivity:**

+/-0.3 dB in HSL (rotation around probe axis)  
+/-0.5 dB in tissue material (rotation normal probe axis)

**Dynamic Range:**

10uW/g to > 100 mW/g;Linearity: +/-0.2 dB(noise: typically < 1uW/g)

**Dimensions:**

Overall length: 330 mm (Tip: 20 mm)  
Tip diameter: 2.5mm (Body: 12 mm)  
Typical distance from probe tip to dipole centers: 1 mm

**Application:**

Highprecision dosimetric measurement in any exposure scenario  
(e.g., very strong gradient fields).Only probe which enables compliance  
testing for frequencies up to 6GHz with precision of better 30%.



**EX3DV3 E-field Probe**

## 4.2 SAM Twin Phantom

### Construction:

The shell corresponds to the specifications of the Specific Anthropomorphic Mannequin (SAM) phantom defined in IEEE 1528-200X, CENELEC EN 50361 and IEC 62209. It enables the dosimetric evaluation of left and right hand phone usage as well as body mounted usage at the flat phantom region. A cover prevents evaporation of the liquid. Reference markings on the phantom allow the complete setup of all predefined phantom positions and measurement grids by manually teaching three points with the robot.

### Shell Thickness:

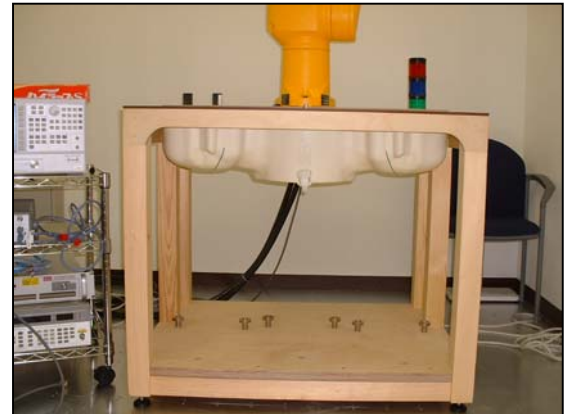
2 +/-0.2 mm

### Filling Volume:

Approx. 25 liters

### Dimensions:

(H x L x W): 810 x 1000 x 500 mm



**SAM Twin Phantom**

## 4.3 Device Holder for Transmitters

In combination with the SAM Twin Phantom V4.0, the Mounting Device enables the rotation of the mounted transmitter

in spherical coordinates whereby the rotation points is the ear opening. The devices can be easily, accurately, and repeatedly positioned according to the FCC and CENELEC specifications. The device holder can be locked at different phantom locations (left head, right head, flat phantom).

\* Note: A simulating human hand is not used due to the complex anatomical and geometrical structure of the hand that may produced infinite number of configurations.

To produce the worst-case condition (the hand absorbs antenna output power), the hand is omitted during the tests.



**Device Holder**

---

## 5. Test system specifications

### Robot RX60L

Number of Axes	:	6
Payload	:	1.6 kg
Reach	:	800mm
Repeatability	:	+/-0.025mm
Control Unit	:	CS7M
Programming Language	:	V+
Manufacture	:	Stäubli Unimation Corp. Robot Model: RX60

### DASY4 Measurement server

Features	:	166MHz low power Pentium MMX 32MB chipdisk and 64MB RAM Serial link to DAE (with watchdog supervision) 16 Bit A/D converter for surface detection system Two serial links to robot (one for real-time communication which is supervised by watchdog) Ethernet link to PC (with watchdog supervision) Emergency stop relay for robot safety chain Two expansion slots for future applications
Manufacture	:	Schimid & Partner Engineering AG

### Data Acquisition Electronic (DAE)

Features	:	Signal amplifier, multiplexer, A/D converter and control logic Serial optical link for communication with DASY4 embedded system (fully remote controlled) 2 step probe touch detector for mechanical surface detection and emergency robot stop (not in -R version)
Measurement Range	:	1 $\mu$ V to > 200 mV (16 bit resolution and two range settings: 4mV, 400mV)
Input Offset voltage	:	< 1 $\mu$ V (with auto zero)
Input Resistance	:	200 M $\Omega$
Battery Power	:	> 10 h of operation (with two 9 V battery)
Dimension	:	60 x 60 x 68 mm
Manufacture	:	Schimid & Partner Engineering AG

### Software

Item	:	Dosimetric Assesment System DASY4
Type No.	:	SD 000 401A, SD 000 402A
Software version No.	:	4.6
Manufacture / Origin	:	Schimid & Partner Engineering AG

### E-Field Probe

Model	:	EX3DV3
Serial No.	:	3507
Construction	:	Symmetrical design with triangular core
Frequency	:	10 MHz to 6 GHz
Linearity	:	+/-0.2 dB (30 MHz to 3 GHz)
Manufacture	:	Schimid & Partner Engineering AG

### Phantom

Type	:	SAM Twin Phantom V4.0
Shell Material	:	Fiberglass
Thickness	:	2.0 +/-0.2 mm
Volume	:	Approx. 25 liters
Manufacture	:	Schimid & Partner Engineering AG

---

UL Apex Co., Ltd.

Head Office EMC Lab.

4383-326 Asama-cho, Ise-shi, Mie-ken 516-0021 JAPAN

Telephone: +81 596 24 8116

Facsimile: +81 596 24 8124

## 6. Simulated Tissues Composition of 5GHz

Ingredient	MIXTURE(%)	
	Head 5GHz	Muscle 5GHz
Water	64.0	78.0
Mineral Oil	18.0	11.0
Emulsifiers	15.0	9.0
Additives and salt	3.0	2.0

## 7. Validation Measurement

### Simulated tissue liquid parameter

#### 7-a Simulated Tissue Liquid Parameter confirmation

The dielectric parameters were checked prior to assessment using the HP85070D dielectric probe kit. The dielectric parameters measurement are reported in each correspondent section.

#### 7-b Head 5GHz

Type of liquid : **Head 5GHz**  
Ambient temperature (deg.c.) : **25.0(28-Feb,1-Mar)**  
Relative Humidity (%) : **32(28-Feb,1-Mar)**  
Liquid depth (cm) : **15.0**

DIELECTRIC PARAMETERS MEASUREMENT RESULTS								
Date	Frequency [MHz]	Liquid Temp [deg.c]		Parameters	Target Value	Measured	Deviation [%]	Limit [%]
		Before	After					
28-Feb	5800	24.2	24.2	Relative Permittivity $\epsilon_r$	35.3	32.3	-8.5	+/-10*
				Conductivity $\sigma$ [mho/m]	5.27	5.27	0.0	+/-5
1-Mar	5800	24.0	24.0	Relative Permittivity $\epsilon_r$	35.3	32.1	-9.1	+/-10*
				Conductivity $\sigma$ [mho/m]	5.27	5.08	-3.6	+/-5

#### 7-c Muscle 5GHz

Type of liquid : **Muscle 5GHz**  
Ambient temperature (deg.c.) : **25.0**  
Relative Humidity (%) : **32**  
Liquid depth (cm) : **15.0**

DIELECTRIC PARAMETERS MEASUREMENT RESULTS								
Date	Frequency [MHz]	Liquid Temp [deg.c]		Parameters	Target Value	Measured	Deviation [%]	Limit [%]
		Before	After					
28-Feb	5800	24.2	24.2	Relative Permittivity $\epsilon_r$	48.2	45.3	-6.0	+/-10*
				Conductivity $\sigma$ [mho/m]	6.00	6.03	0.5	+/-5

\*+/-50MHz>Probe Calibration≤+/-100MHz Calibration Uncertainty = +/-13.1% (k=2)

UL Apex Co., Ltd.

Head Office EMC Lab.

4383-326 Asama-cho, Ise-shi, Mie-ken 516-0021 JAPAN

Telephone: +81 596 24 8116

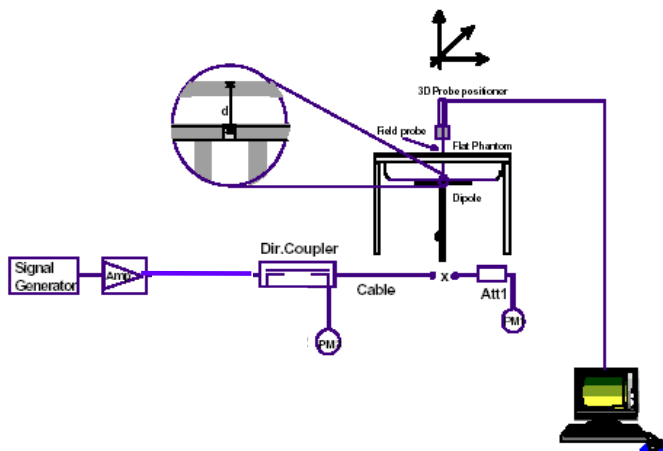
Facsimile: +81 596 24 8124

### 8. System validation data

The target values of 5GHz were not defined by IEEE 1528. So, the target values were made into the calibration values of SPEAG. And the validation results of 5800MHz checked (Evaluation of head) that it was within +/-10% as compared with the calibration values of SPEAG. The validation results are in the table below.

Type of liquid : **Head 5GHz**  
 Ambient temperature (deg.c.) : **25.0(28-Feb,1-Mar)**  
 Relative Humidity (%) : **32(28-Feb,1-Mar)**  
 Dipole : **D5GHzV2 SN:1020**  
 Power : **250mW**

SYSTEM PERFORMANCE CHECK											
Liquid ( Head 5100-5800 MHz )								System dipole validation target & measured			
Date	Frequency	Liquid Temp [deg.c.]		Relative Permittivity $\epsilon_r$		Conductivity $\sigma$ [mho/m]		SAR 1g [W/kg]		Deviation [%]	Limit [%]
		Before	After	Target	Measured	Target	Measured	Target	Measured		
28-Feb	5800	24.2	24.2	35.3	32.3	5.27	5.27	20.2	21.3	-5.4	+/-10
1-Mar	5800	24.0	24.0	35.3	32.1	5.27	5.08	20.2	21.7	-7.4	+/-10



5100-5800MHz  
System performance check setup

Test system for the system performance check setup diagram

## 9. Validation uncertainty

The uncertainty budget has been determined for the DASY4 measurement system according to the SPEAG documents[6][7] and is given in the following Table.

Error Description	Uncertainty value $\pm$ %	Probability distribution	divisor	(ci) 1g	Standard Uncertainty (1g)	vi or veff
<b>Measurement System</b>						
Probe calibration	$\pm 6.8$	Normal	1	1	$\pm 6.8$	$\infty$
Axial isotropy of the probe	$\pm 4.7$	Rectangular	$\sqrt{3}$	1	$\pm 2.7$	$\infty$
Spherical isotropy of the probe	$\pm 9.6$	Rectangular	0	0	0	$\infty$
Boundary effects	$\pm 2.0$	Rectangular	$\sqrt{3}$	1	$\pm 1.2$	$\infty$
Probe linearity	$\pm 4.7$	Rectangular	$\sqrt{3}$	1	$\pm 2.7$	$\infty$
Detection limit	$\pm 1.0$	Rectangular	$\sqrt{3}$	1	$\pm 0.6$	$\infty$
Readout electronics	$\pm 0.3$	Normal	1	1	$\pm 0.3$	$\infty$
Response time	0	Rectangular	$\sqrt{3}$	1	0	$\infty$
Integration time	0	Rectangular	$\sqrt{3}$	1	0	$\infty$
RF ambient Noise	$\pm 3.0$	Rectangular	$\sqrt{3}$	1	$\pm 1.7$	$\infty$
RF ambient Reflections	$\pm 3.0$	Rectangular	$\sqrt{3}$	1	$\pm 1.7$	$\infty$
Probe Positioner	$\pm 0.8$	Rectangular	$\sqrt{3}$	1	$\pm 0.5$	$\infty$
Probe positioning	$\pm 9.9$	Rectangular	1	1	$\pm 5.7$	$\infty$
Algorithms for Max.SAR Eval.	$\pm 4.0$	Rectangular	$\sqrt{3}$	1	$\pm 2.3$	$\infty$
<b>Dipole</b>						
Dipole Axis to Liquid Distance	$\pm 2.0$	Rectangular	$\sqrt{3}$	1	$\pm 1.2$	$\infty$
Input power and SAR drift meas.	$\pm 4.7$	Rectangular	$\sqrt{3}$	1	$\pm 2.7$	$\infty$
<b>Phantom and Setup</b>						
Phantom uncertainty	$\pm 4.0$	Rectangular	$\sqrt{3}$	1	$\pm 2.3$	$\infty$
Liquid conductivity (target)	$\pm 5.0$	Rectangular	$\sqrt{3}$	0.64	$\pm 1.8$	$\infty$
Liquid conductivity (meas.)	$\pm 5.0$	Rectangular	1	0.64	$\pm 3.2$	$\infty$
Liquid permittivity (target)	$\pm 10.0$	Rectangular	$\sqrt{3}$	0.6	$\pm 3.5$	$\infty$
Liquid permittivity (meas.)	$\pm 10.0$	Rectangular	1	0.6	$\pm 6.0$	$\infty$
<b>Combined Standard Uncertainty</b>						
					<b><math>\pm 13.50</math></b>	
<b>Expanded Uncertainty (k=2)</b>						
					<b><math>\pm 27.00</math></b>	

## 10. Validation Measurement data

### 5800MHz System Validation (Head) / Dipole 5GHz / Forward Conducted Power : 250mW

**DUT: Dipole5GHz; Type: D5GHzV2; Serial: SN:1020**

Communication System: CW; Frequency: 5800 MHz; Crest factor: 1

Medium: HSL 5800 Medium parameters used:  $f = 5800$  MHz;  $\sigma = 5.27$  mho/m;  $\epsilon_r = 35.3$ ;  $\rho = 1000$  kg/m<sup>3</sup>

Phantom section: Flat Section

DASY4 Configuration:

- Probe: EX3DV3 - SN3507; ConvF(4.82, 4.82, 4.82); Calibrated: 2006/05/26

- Sensor-Surface: 2mm (Mechanical Surface Detection)

- Phantom: SAM 1196

- Measurement SW: DASY4, V4.6 Build 23; Postprocessing SW: SEMCAD, V1.8 Build 160

**Area Scan (51x51x1):** Measurement grid: dx=10mm, dy=10mm

Maximum value of SAR (interpolated) = 54.1 mW/g

**Zoom Scan (7x7x11)/Cube 0:** Measurement grid: dx=4mm, dy=4mm, dz=2mm

Reference Value = 95.0 V/m; Power Drift = -0.014 dB

Peak SAR (extrapolated) = 95.5 W/kg

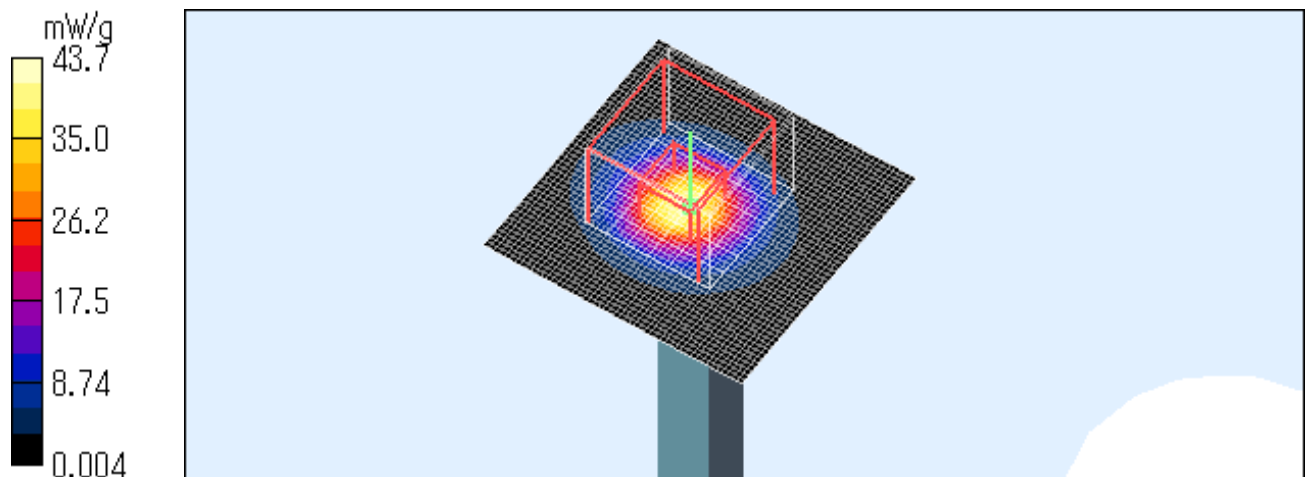
**SAR(1 g) = 21.3 mW/g; SAR(10 g) = 6.04 mW/g**

Maximum value of SAR (measured) = 43.7 mW/g

Test Date = 02/28/07

Ambient Temperature = 25.0degree.c

Liquid Temperature = Before 24.2 degree.C , After 24.2 degree.C



**UL Apex Co., Ltd.**

**Head Office EMC Lab.**

4383-326 Asama-cho, Ise-shi, Mie-ken 516-0021 JAPAN

Telephone: +81 596 24 8116

Facsimile: +81 596 24 8124

---

## 5800MHz System Validation (Head) / Dipole 5GHz / Forward Conducted Power : 250mW

**DUT: Dipole5GHz; Type: D5GHzV2; Serial: SN:1020**

Communication System: CW; Frequency: 5800 MHz; Crest factor: 1

Medium: HSL 5800 Medium parameters used:  $f = 5800$  MHz;  $\sigma = 5.08$  mho/m;  $\epsilon_r = 32.1$ ;  $\rho = 1000$  kg/m<sup>3</sup>

Phantom section: Flat Section

DASY4 Configuration:

- Probe: EX3DV3 - SN3507; ConvF(4.82, 4.82, 4.82); Calibrated: 2006/05/26

- Sensor-Surface: 2mm (Mechanical Surface Detection)

- Phantom: SAM 1196

- Measurement SW: DASY4, V4.6 Build 23; Postprocessing SW: SEMCAD, V1.8 Build 160

**Area Scan (51x51x1):** Measurement grid: dx=10mm, dy=10mm

Maximum value of SAR (interpolated) = 54.8 mW/g

**Zoom Scan (9x9x11)/Cube 0:** Measurement grid: dx=3mm, dy=3mm, dz=2mm

Reference Value = 96.7 V/m; Power Drift = -0.056 dB

Peak SAR (extrapolated) = 96.0 W/kg

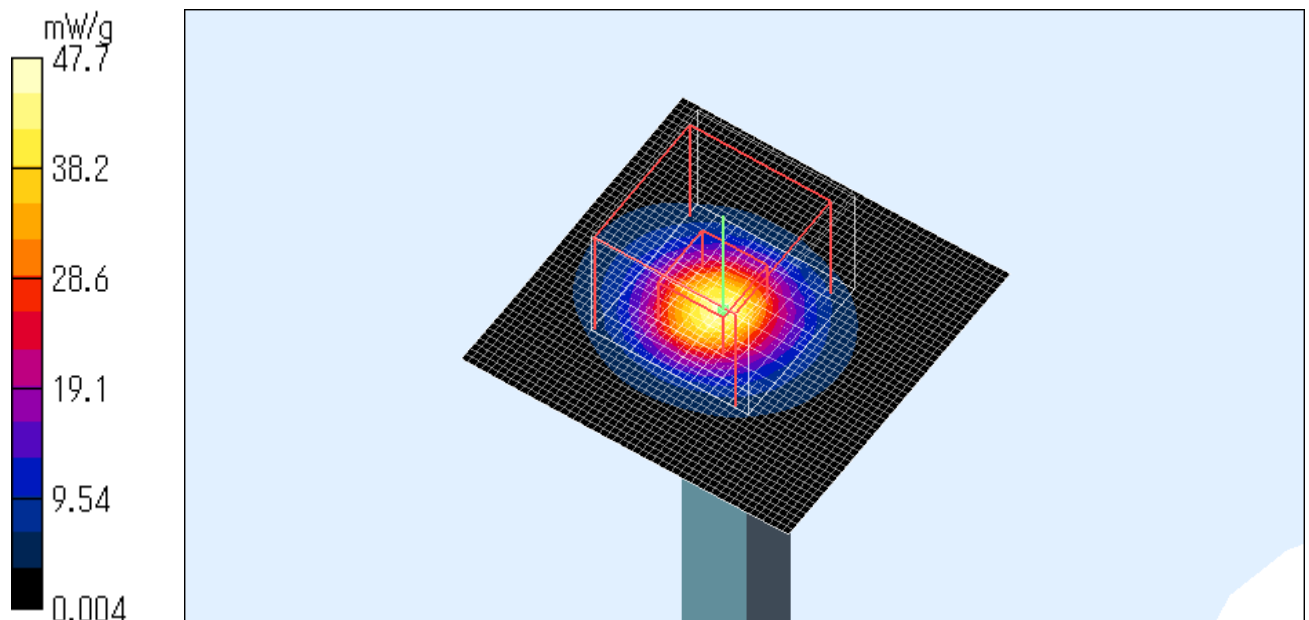
**SAR(1 g) = 21.7 mW/g; SAR(10 g) = 6.08 mW/g**

Maximum value of SAR (measured) = 47.7 mW/g

Test Date = 03/01/07

Ambient Temperature = 25.0degree.c

Liquid Temperature = Before 24.0 degree.C , After 24.0 degree.C



---

**UL Apex Co., Ltd.**

**Head Office EMC Lab.**

4383-326 Asama-cho, Ise-shi, Mie-ken 516-0021 JAPAN

Telephone: +81 596 24 8116

Facsimile: +81 596 24 8124

11. System Validation Dipole (D5GHzV2,S/N: 1020)

**Calibration Laboratory of  
Schmid & Partner  
Engineering AG**  
Zeughausstrasse 43, 8004 Zurich, Switzerland



**S** Schweizerischer Kalibrierdienst  
**C** Service suisse d'étalonnage  
**S** Servizio svizzero di taratura  
**S** Swiss Calibration Service

Accredited by the Swiss Federal Office of Metrology and Accreditation  
The Swiss Accreditation Service is one of the signatories to the EA  
Multilateral Agreement for the recognition of calibration certificates

Accreditation No.: **SCS 108**

Client **UL A-pex (MTT)**

Certificate No: **D5GHzV2-1020\_May06**

**CALIBRATION CERTIFICATE**

Object: **D5GHzV2 - SN: 1020**

Calibration procedure(s): **QA CAL-22.v1  
Calibration procedure for dipole validation kits between 3-6 GHz**

Calibration date: **May 24, 2006**

Condition of the calibrated item: **In Tolerance**

This calibration certificate documents the traceability to national standards, which realize the physical units of measurements (SI).  
The measurements and the uncertainties with confidence probability are given on the following pages and are part of the certificate.

All calibrations have been conducted in the closed laboratory facility: environment temperature (22 ± 3)°C and humidity < 70%.

Calibration Equipment used (M&TE critical for calibration)

Primary Standards	ID #	Cal Date (Calibrated by, Certificate No.)	Scheduled Calibration
Power meter E4419B	GB41293874	5-Apr-06 (METAS, No. 251-00557)	Apr-07
Power sensor E4412A	MY41495277	5-Apr-06 (METAS, No. 251-00557)	Apr-07
Power sensor E4412A	MY41498087	5-Apr-06 (METAS, No. 251-00557)	Apr-07
Reference 20 dB Attenuator	SN: S5086 (20b)	4-Apr-06 (METAS, No. 251-00558)	Apr-07
Reference 10 dB Attenuator	SN: 5047.2 (10r)	11-Aug-05 (METAS, No 251-00498)	Aug-06
Reference Probe EX3DV4	SN: 3503	19-Mar-05 (SPEAG, No. EX3-3503_Mar06)	Mar-07
DAE4	SN: 601	15-Dec-05 (SPEAG, No. DAE4-601_Dec05)	Dec-06
Secondary Standards	ID #	Check Date (in house)	Scheduled Check
RF generator R&S SMT-06	100005	4-Aug-99 (SPEAG, in house check Nov-05)	In house check: Nov-07
Network Analyzer HP 8753E	US37390585 S4206	18-Oct-01 (SPEAG, in house check Nov-05)	In house check: Nov 06

Calibrated by:	Name <b>Marcel Fehr</b>	Function <b>Laboratory Technician</b>	Signature 
Approved by:	Name <b>Katja Pokovic</b>	Technical Manager	

Issued: May 24, 2006

This calibration certificate shall not be reproduced except in full without written approval of the laboratory.

**Calibration Laboratory of  
Schmid & Partner  
Engineering AG**  
Zeughausstrasse 43, 8004 Zurich, Switzerland



**S** Schweizerischer Kalibrierdienst  
**C** Service suisse d'étalonnage  
**S** Servizio svizzero di taratura  
**S** Swiss Calibration Service

Accredited by the Swiss Federal Office of Metrology and Accreditation  
The Swiss Accreditation Service is one of the signatories to the EA  
Multilateral Agreement for the recognition of calibration certificates

Accreditation No.: **SCS 108**

**Glossary:**

TSL tissue simulating liquid  
ConvF sensitivity in TSL / NORM x,y,z  
N/A not applicable or not measured

**Calibration is Performed According to the Following Standards:**

- a) IEC Std 62209 Part 2, "Evaluation of Human Exposure to Radio Frequency Fields from Handheld and Body-Mounted Wireless Communication Devices in the Frequency Range of 30 MHz to 6 GHz: Human models, Instrumentation, and Procedures"; Part 2: "Procedure to determine the Specific Absorption Rate (SAR) for including accessories and multiple transmitters", Draft Version 0.9, December 2004
- b) Federal Communications Commission Office of Engineering & Technology (FCC OET), "Evaluating Compliance with FCC Guidelines for Human Exposure to Radiofrequency Electromagnetic Fields; Additional Information for Evaluating Compliance of Mobile and Portable Devices with FCC Limits for Human Exposure to Radiofrequency Emissions", Supplement C (Edition 01-01) to Bulletin 65

**Additional Documentation:**

- c) DASY4 System Handbook

**Methods Applied and Interpretation of Parameters:**

- *Measurement Conditions:* Further details are available from the Validation Report at the end of the certificate. All figures stated in the certificate are valid at the frequency indicated.
- *Antenna Parameters with TSL:* The dipole is mounted with the spacer to position its feed point exactly below the center marking of the flat phantom section, with the arms oriented parallel to the body axis.
- *Feed Point Impedance and Return Loss:* These parameters are measured with the dipole positioned under the liquid filled phantom. The impedance stated is transformed from the measurement at the SMA connector to the feed point. The Return Loss ensures low reflected power. No uncertainty required.
- *Electrical Delay:* One-way delay between the SMA connector and the antenna feed point. No uncertainty required.
- *SAR measured:* SAR measured at the stated antenna input power.
- *SAR normalized:* SAR as measured, normalized to an input power of 1 W at the antenna connector.
- *SAR for nominal TSL parameters:* The measured TSL parameters are used to calculate the nominal SAR result.

### Measurement Conditions

DASY system configuration, as far as not given on page 1.

DASY Version	DASY4	V4.6
Extrapolation	Advanced Extrapolation	
Phantom	Modular Flat Phantom V5.0	
Distance Dipole Center - TSL	10 mm	with Spacer
Area Scan resolution	dx, dy = 10 mm	
Zoom Scan Resolution	dx, dy = 4.3 mm, dz = 3 mm	
Frequency	5200 MHz ± 1 MHz 5500 MHz ± 1 MHz 5800 MHz ± 1 MHz	

### Head TSL parameters at 5200 MHz

The following parameters and calculations were applied.

	Temperature	Permittivity	Conductivity
Nominal Head TSL parameters	22.0 °C	36.0	4.66 mho/m
Measured Head TSL parameters	(22.0 ± 0.2) °C	35.6 ± 6 %	4.53 mho/m ± 6 %
Head TSL temperature during test	(21.6 ± 0.2) °C	---	---

### SAR result with Head TSL at 5200 MHz

SAR averaged over 1 cm <sup>3</sup> (1 g) of Head TSL	condition	
SAR measured	250 mW input power	20.4 mW / g
SAR normalized	normalized to 1W	81.6 mW / g
SAR for nominal Head TSL parameters <sup>1</sup>	normalized to 1W	<b>81.4 mW / g ± 19.9 % (k=2)</b>

SAR averaged over 10 cm <sup>3</sup> (10 g) of Head TSL	condition	
SAR measured	250 mW input power	5.76 mW / g
SAR normalized	normalized to 1W	23.0 mW / g
SAR for nominal Head TSL parameters <sup>1</sup>	normalized to 1W	<b>22.9 mW / g ± 19.5 % (k=2)</b>

<sup>1</sup> Correction to nominal TSL parameters according to c), chapter "SAR Sensitivities"

### Head TSL parameters at 5500 MHz

The following parameters and calculations were applied.

	Temperature	Permittivity	Conductivity
Nominal Head TSL parameters	22.0 °C	35.6	4.96 mho/m
Measured Head TSL parameters	(22.0 ± 0.2) °C	35.1 ± 6 %	4.80 mho/m ± 6 %
Head TSL temperature during test	(21.6 ± 0.2) °C	---	---

### SAR result with Head TSL at 5500 MHz

SAR averaged over 1 cm <sup>3</sup> (1 g) of Head TSL	condition	
SAR measured	250 mW input power	20.5 mW / g
SAR normalized	normalized to 1W	82.0 mW / g
SAR for nominal Head TSL parameters <sup>1</sup>	normalized to 1W	<b>81.6 mW / g ± 19.9 % (k=2)</b>

SAR averaged over 10 cm <sup>3</sup> (10 g) of Head TSL	condition	
SAR measured	250 mW input power	5.76 mW / g
SAR normalized	normalized to 1W	23.0 mW / g
SAR for nominal Head TSL parameters <sup>1</sup>	normalized to 1W	<b>22.9 mW / g ± 19.5 % (k=2)</b>

### Head TSL parameters at 5800 MHz

The following parameters and calculations were applied.

	Temperature	Permittivity	Conductivity
Nominal Head TSL parameters	22.0 °C	35.3	5.27 mho/m
Measured Head TSL parameters	(22.0 ± 0.2) °C	34.6 ± 6 %	5.09 mho/m ± 6 %
Head TSL temperature during test	(21.6 ± 0.2) °C	---	---

### SAR result with Head TSL at 5800 MHz

SAR averaged over 1 cm <sup>3</sup> (1 g) of Head TSL	condition	
SAR measured	250 mW input power	20.2 mW / g
SAR normalized	normalized to 1W	80.8 mW / g
SAR for nominal Head TSL parameters <sup>1</sup>	normalized to 1W	<b>80.2 mW / g ± 19.9 % (k=2)</b>

SAR averaged over 10 cm <sup>3</sup> (10 g) of Head TSL	condition	
SAR measured	250 mW input power	5.68 mW / g
SAR normalized	normalized to 1W	22.7 mW / g
SAR for nominal Head TSL parameters <sup>1</sup>	normalized to 1W	<b>22.5 mW / g ± 19.5 % (k=2)</b>

**Body TSL parameters at 5200 MHz**

The following parameters and calculations were applied.

	Temperature	Permittivity	Conductivity
Nominal Body TSL parameters	22.0 °C	49.0	5.30 mho/m
Measured Body TSL parameters	(22.0 ± 0.2) °C	49.1 ± 6 %	5.11 mho/m ± 6 %
Body TSL temperature during test	(21.5 ± 0.2) °C	---	---

**SAR result with Body TSL at 5200 MHz**

SAR averaged over 1 cm <sup>3</sup> (1 g) of Body TSL	condition	
SAR measured	250 mW input power	19.0 mW / g
SAR normalized	normalized to 1W	76.0 mW / g
SAR for nominal Body TSL parameters <sup>1</sup>	normalized to 1W	<b>76.1 mW / g ± 19.9 % (k=2)</b>

SAR averaged over 10 cm <sup>3</sup> (10 g) of Body TSL	condition	
SAR measured	250 mW input power	5.37 mW / g
SAR normalized	normalized to 1W	21.5 mW / g
SAR for nominal Body TSL parameters <sup>1</sup>	normalized to 1W	<b>21.4 mW / g ± 19.5 % (k=2)</b>

**Body TSL parameters at 5500 MHz**

The following parameters and calculations were applied.

	Temperature	Permittivity	Conductivity
Nominal Body TSL parameters	22.0 °C	48.6	5.56 mho/m
Measured Body TSL parameters	(22.0 ± 0.2) °C	48.4 ± 6 %	5.50 mho/m ± 6 %
Body TSL temperature during test	(21.5 ± 0.2) °C	---	---

**SAR result with Body TSL at 5500 MHz**

SAR averaged over 1 cm <sup>3</sup> (1 g) of Body TSL	condition	
SAR measured	250 mW input power	19.1 mW / g
SAR normalized	normalized to 1W	76.4 mW / g
SAR for nominal Body TSL parameters <sup>1</sup>	normalized to 1W	<b>76.2 mW / g ± 19.9 % (k=2)</b>

SAR averaged over 10 cm <sup>3</sup> (10 g) of Body TSL	condition	
SAR measured	250 mW input power	5.40 mW / g
SAR normalized	normalized to 1W	21.6 mW / g
SAR for nominal Body TSL parameters <sup>1</sup>	normalized to 1W	<b>21.5 mW / g ± 19.5 % (k=2)</b>

**Body TSL parameters at 5800 MHz**

The following parameters and calculations were applied.

	Temperature	Permittivity	Conductivity
Nominal Body TSL parameters	22.0 °C	48.2	6.00 mho/m
Measured Body TSL parameters	(22.0 ± 0.2) °C	47.8 ± 6 %	5.88 mho/m ± 6 %
Body TSL temperature during test	(21.5 ± 0.2) °C	---	---

**SAR result with Body TSL at 5800 MHz**

SAR averaged over 1 cm <sup>3</sup> (1 g) of Body TSL	condition	
SAR measured	250 mW input power	17.5 mW / g
SAR normalized	normalized to 1W	70.0 mW / g
SAR for nominal Body TSL parameters <sup>1</sup>	normalized to 1W	<b>69.8 mW / g ± 19.9 % (k=2)</b>

SAR averaged over 10 cm <sup>3</sup> (10 g) of Body TSL	condition	
SAR measured	250 mW input power	4.93 mW / g
SAR normalized	normalized to 1W	19.7 mW / g
SAR for nominal Body TSL parameters <sup>1</sup>	normalized to 1W	<b>19.6 mW / g ± 19.5 % (k=2)</b>

## Appendix

### Antenna Parameters with Head TSL at 5200 MHz

Impedance, transformed to feed point	49.9 $\Omega$ - 10.7 j $\Omega$
Return Loss	-19.4 dB

### Antenna Parameters with Head TSL at 5500 MHz

Impedance, transformed to feed point	50.3 $\Omega$ - 3.7 j $\Omega$
Return Loss	-28.6 dB

### Antenna Parameters with Head TSL at 5800 MHz

Impedance, transformed to feed point	56.0 $\Omega$ - 1.5 j $\Omega$
Return Loss	-24.6 dB

### Antenna Parameters with Body TSL at 5200 MHz

Impedance, transformed to feed point	49.2 $\Omega$ - 8.8 j $\Omega$
Return Loss	-21.0 dB

### Antenna Parameters with Body TSL at 5500 MHz

Impedance, transformed to feed point	49.8 $\Omega$ - 2.7 j $\Omega$
Return Loss	-31.5 dB

### Antenna Parameters with Body TSL at 5800 MHz

Impedance, transformed to feed point	57.2 $\Omega$ + 0.2 j $\Omega$
Return Loss	-23.5 dB

### General Antenna Parameters and Design

Electrical Delay (one direction)	1.200 ns
----------------------------------	----------

After long term use with 40 W radiated power, only a slight warming of the dipole near the feedpoint can be measured.

The dipole is made of standard semirigid coaxial cable. The center conductor of the feeding line is directly connected to the second arm of the dipole. The antenna is therefore short-circuited for DC-signals.

No excessive force must be applied to the dipole arms, because they might bend or the soldered connections near the feedpoint may be damaged.

### Additional EUT Data

Manufactured by	SPEAG
Manufactured on	February 5, 2004

---

## DASY4 Validation Report for Head TSL

Date/Time: 24.05.2006 13:24:27

Test Laboratory: SPEAG, Zurich, Switzerland

**DUT: Dipole 5GHz; Type: D5GHz; Serial: D5GHzV2 - SN:1020**

Communication System: CW-5GHz; Frequency: 5200 MHzFrequency: 5500 MHzFrequency: 5800 MHz;Duty Cycle: 1:1  
Medium: HSL 5800 MHz;  
Medium parameters used:  $f = 5200$  MHz;  $\sigma = 4.53$  mho/m;  $\epsilon_r = 35.6$ ;  $\rho = 1000$  kg/m<sup>3</sup> Medium parameters used:  $f = 5500$  MHz;  $\sigma = 4.8$  mho/m;  $\epsilon_r = 35.1$ ;  $\rho = 1000$  kg/m<sup>3</sup> Medium parameters used:  $f = 5800$  MHz;  $\sigma = 5.09$  mho/m;  $\epsilon_r = 34.6$ ;  $\rho = 1000$  kg/m<sup>3</sup>  
Phantom section: Flat Section  
Measurement Standard: DASY4 (High Precision Assessment)

DASY4 Configuration:

- Probe: EX3DV4 - SN3503; ConvF(5.52, 5.52, 5.52)ConvF(5.18, 5.18, 5.18)ConvF(5.02, 5.02, 5.02); Calibrated: 18.03.2006
- Sensor-Surface: 2mm (Mechanical Surface Detection)
- Electronics: DAE4 Sn601; Calibrated: 15.12.2005
- Phantom: Flat Phantom 5.0 (front); Type: QD000P50AA; ;
- Measurement SW: DASY4, V4.6 Build 23; Postprocessing SW: SEMCAD, V1.8 Build 161

**d=10mm, Pin=250mW, f=5200 MHz/Area Scan (91x91x1):** Measurement grid: dx=10mm, dy=10mm

Maximum value of SAR (interpolated) = 43.8 mW/g

**d=10mm, Pin=250mW, f=5200 MHz/Zoom Scan (8x8x8), dist=2mm (8x8x8)/Cube 0:**

Measurement grid: dx=4.3mm, dy=4.3mm, dz=3mm  
Reference Value = 81.4 V/m; Power Drift = 0.090 dB  
Peak SAR (extrapolated) = 76.9 W/kg  
**SAR(1 g) = 20.4 mW/g; SAR(10 g) = 5.76 mW/g**  
Maximum value of SAR (measured) = 39.6 mW/g

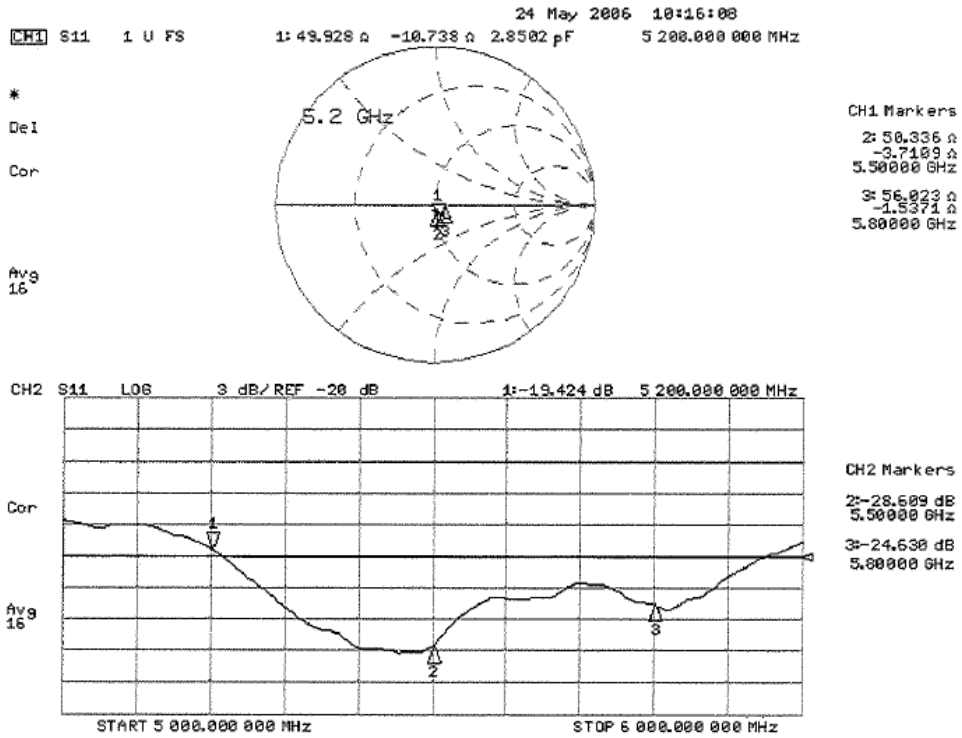
**d=10mm, Pin=250mW, f=5500 MHz/Zoom Scan (8x8x8), dist=2mm 2 (8x8x8)/Cube 0:**

Measurement grid: dx=4.3mm, dy=4.3mm, dz=3mm  
Reference Value = 78.8 V/m; Power Drift = 0.029 dB  
Peak SAR (extrapolated) = 80.5 W/kg  
**SAR(1 g) = 20.5 mW/g; SAR(10 g) = 5.76 mW/g**

**d=10mm, Pin=250mW, f=5800 MHz/Zoom Scan (8x8x8), dist=2mm (8x8x8)/Cube 0:**

Measurement grid: dx=4.3mm, dy=4.3mm, dz=3mm  
Reference Value = 76.3 V/m; Power Drift = 0.104 dB  
Peak SAR (extrapolated) = 83.5 W/kg  
**SAR(1 g) = 20.2 mW/g; SAR(10 g) = 5.68 mW/g**  
Maximum value of SAR (measured) = 39.5 mW/g

**Impedance Measurement Plot for Head TSL**



---

## DASY4 Validation Report for Body TSL

Date/Time: 24.05.2006 17:02:31

Test Laboratory: SPEAG, Zurich, Switzerland

**DUT: Dipole 5GHz; Type: D5GHz; Serial: D5GHzV2 - SN:1020**

Communication System: CW-5GHz; Frequency: 5200 MHzFrequency: 5500 MHzFrequency: 5800

MHz;Duty Cycle: 1:1

Medium: MSL U10 BB;

Medium parameters used:  $f = 5200$  MHz;  $\sigma = 5.13$  mho/m;  $\epsilon_r = 49.1$ ;  $\rho = 1000$  kg/m<sup>3</sup> Medium parameters used:  $f = 5500$  MHz;  $\sigma = 5.52$  mho/m;  $\epsilon_r = 48.4$ ;  $\rho = 1000$  kg/m<sup>3</sup> Medium parameters used:  $f = 5800$  MHz;  $\sigma = 5.91$  mho/m;  $\epsilon_r = 47.8$ ;  $\rho = 1000$  kg/m<sup>3</sup>

Phantom section: Flat Section

Measurement Standard: DASY4 (High Precision Assessment)

DASY4 Configuration:

- Probe: EX3DV4 - SN3503; ConvF(4.98, 4.98, 4.98)ConvF(4.67, 4.67, 4.67)ConvF(4.72, 4.72, 4.72); Calibrated: 18.03.2006
- Sensor-Surface: 2mm (Mechanical Surface Detection)
- Electronics: DAE4 Sn601; Calibrated: 15.12.2005
- Phantom: Flat Phantom 5.0 (back); Type: QD000P50AA; ;
- Measurement SW: DASY4, V4.6 Build 23; Postprocessing SW: SEMCAD, V1.8 Build 161

**d=10mm, Pin=250mW, f=5200 MHz/Area Scan (91x91x1):** Measurement grid: dx=10mm, dy=10mm

Maximum value of SAR (interpolated) = 40.9 mW/g

**d=10mm, Pin=250mW, f=5200 MHz/Zoom Scan (8x8x8), dist=2mm (8x8x8)/Cube 0:**

Measurement grid: dx=4.3mm, dy=4.3mm, dz=3mm

Reference Value = 79.4 V/m; Power Drift = -0.004 dB

Peak SAR (extrapolated) = 65.9 W/kg

**SAR(1 g) = 19 mW/g; SAR(10 g) = 5.37 mW/g**

Maximum value of SAR (measured) = 35.4 mW/g

**d=10mm, Pin=250mW, f=5500 MHz/Zoom Scan (8x8x8), dist=2mm (8x8x8)/Cube 0:**

Measurement grid: dx=4.3mm, dy=4.3mm, dz=3mm

Reference Value = 76.2 V/m; Power Drift = 0.023 dB

Peak SAR (extrapolated) = 71.1 W/kg

**SAR(1 g) = 19.1 mW/g; SAR(10 g) = 5.4 mW/g**

Maximum value of SAR (measured) = 36.3 mW/g

**d=10mm, Pin=250mW, f=5800 MHz/Zoom Scan (8x8x8), dist=2mm (8x8x8)/Cube 0:**

Measurement grid: dx=4.3mm, dy=4.3mm, dz=3mm

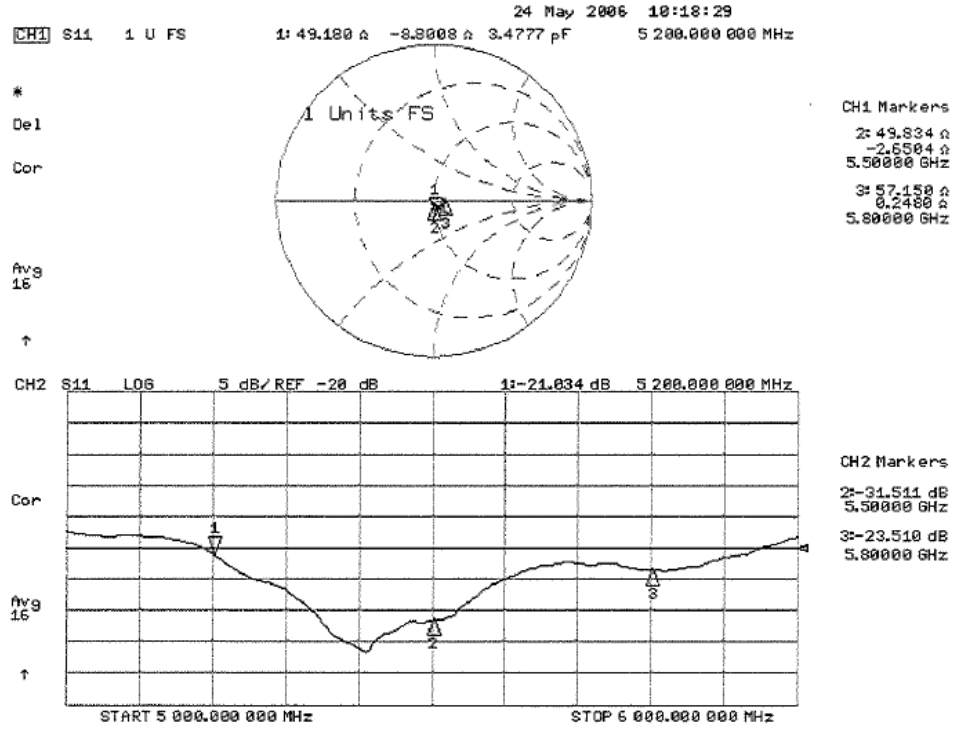
Reference Value = 71.5 V/m; Power Drift = -0.010 dB

Peak SAR (extrapolated) = 69.8 W/kg

**SAR(1 g) = 17.5 mW/g; SAR(10 g) = 4.93 mW/g**

Maximum value of SAR (measured) = 34.0 mW/g

**Impedance Measurement Plot for Body TSL**



12. Dosimetric E-Field Probe Calibration (EX3DV3,S/N: 3507)

**Calibration Laboratory of  
 Schmid & Partner  
 Engineering AG**  
 Zeughausstrasse 43, 8004 Zurich, Switzerland



**S** Schweizerischer Kalibrierdienst  
**C** Service suisse d'étalonnage  
**S** Servizio svizzero di taratura  
**S** Swiss Calibration Service

Accredited by the Swiss Federal Office of Metrology and Accreditation  
 The Swiss Accreditation Service is one of the signatories to the EA  
 Multilateral Agreement for the recognition of calibration certificates

Accreditation No.: SCS 108

Client **UL Apex (MTI)**

Calibration: **EX3-3507\_May06**

CALIBRATION CERTIFICATE																																																			
Object	EX3DV3 - SN: 3507																																																		
Calibration procedure(s)	QA CAL-01.v5, QA CAL-12.v4 and QA CAL-11.v3 Calibration procedure for dosimetric E-field probes																																																		
Calibration date:	May 26, 2006																																																		
Condition of the calibrated item	In Tolerance																																																		
<p>This calibration certificate documents the traceability to national standards, which realize the physical units of measurements (SI).            The measurements and the uncertainties with confidence probability are given on the following pages and are part of the certificate.</p> <p>All calibrations have been conducted in the closed laboratory facility: environment temperature (22 ± 3)°C and humidity &lt; 70%.</p> <p>Calibration Equipment used (M&amp;TE critical for calibration)</p> <table border="1"> <thead> <tr> <th>Primary Standards</th> <th>ID #</th> <th>Cal Date (Calibrated by, Certificate No.)</th> <th>Scheduled Calibration</th> </tr> </thead> <tbody> <tr> <td>Power meter E4419B</td> <td>GB41293874</td> <td>5-Apr-06 (METAS, No. 251-00557)</td> <td>Apr-07</td> </tr> <tr> <td>Power sensor E4412A</td> <td>MY41495277</td> <td>5-Apr-06 (METAS, No. 251-00557)</td> <td>Apr-07</td> </tr> <tr> <td>Power sensor E4412A</td> <td>MY41498087</td> <td>5-Apr-06 (METAS, No. 251-00557)</td> <td>Apr-07</td> </tr> <tr> <td>Reference 3 dB Attenuator</td> <td>SN: S5054 (3c)</td> <td>11-Aug-05 (METAS, No. 251-00498)</td> <td>Aug-06</td> </tr> <tr> <td>Reference 20 dB Attenuator</td> <td>SN: S5086 (20b)</td> <td>4-Apr-06 (METAS, No. 251-00558)</td> <td>Apr-07</td> </tr> <tr> <td>Reference 30 dB Attenuator</td> <td>SN: S5129 (30b)</td> <td>11-Aug-05 (METAS, No. 251-00500)</td> <td>Aug-06</td> </tr> <tr> <td>Reference Probe ES3DV2</td> <td>SN: 3013</td> <td>2-Jan-06 (SPEAG, No. ES3-3013_Jan06)</td> <td>Jan-07</td> </tr> <tr> <td>DAE4</td> <td>SN: 654</td> <td>2-Feb-06 (SPEAG, No. DAE4-654_Feb06)</td> <td>Feb-07</td> </tr> </tbody> </table> <table border="1"> <thead> <tr> <th>Secondary Standards</th> <th>ID #</th> <th>Check Date (in house)</th> <th>Scheduled Check</th> </tr> </thead> <tbody> <tr> <td>RF generator HP 8648C</td> <td>US3842LU01700</td> <td>4-Aug-99 (SPEAG, in house check Nov-05)</td> <td>In house check: Nov-07</td> </tr> <tr> <td>Network Analyzer HP 8753E</td> <td>US37390585</td> <td>18-Oct-01 (SPEAG, in house check Nov-05)</td> <td>In house check: Nov 06</td> </tr> </tbody> </table>				Primary Standards	ID #	Cal Date (Calibrated by, Certificate No.)	Scheduled Calibration	Power meter E4419B	GB41293874	5-Apr-06 (METAS, No. 251-00557)	Apr-07	Power sensor E4412A	MY41495277	5-Apr-06 (METAS, No. 251-00557)	Apr-07	Power sensor E4412A	MY41498087	5-Apr-06 (METAS, No. 251-00557)	Apr-07	Reference 3 dB Attenuator	SN: S5054 (3c)	11-Aug-05 (METAS, No. 251-00498)	Aug-06	Reference 20 dB Attenuator	SN: S5086 (20b)	4-Apr-06 (METAS, No. 251-00558)	Apr-07	Reference 30 dB Attenuator	SN: S5129 (30b)	11-Aug-05 (METAS, No. 251-00500)	Aug-06	Reference Probe ES3DV2	SN: 3013	2-Jan-06 (SPEAG, No. ES3-3013_Jan06)	Jan-07	DAE4	SN: 654	2-Feb-06 (SPEAG, No. DAE4-654_Feb06)	Feb-07	Secondary Standards	ID #	Check Date (in house)	Scheduled Check	RF generator HP 8648C	US3842LU01700	4-Aug-99 (SPEAG, in house check Nov-05)	In house check: Nov-07	Network Analyzer HP 8753E	US37390585	18-Oct-01 (SPEAG, in house check Nov-05)	In house check: Nov 06
Primary Standards	ID #	Cal Date (Calibrated by, Certificate No.)	Scheduled Calibration																																																
Power meter E4419B	GB41293874	5-Apr-06 (METAS, No. 251-00557)	Apr-07																																																
Power sensor E4412A	MY41495277	5-Apr-06 (METAS, No. 251-00557)	Apr-07																																																
Power sensor E4412A	MY41498087	5-Apr-06 (METAS, No. 251-00557)	Apr-07																																																
Reference 3 dB Attenuator	SN: S5054 (3c)	11-Aug-05 (METAS, No. 251-00498)	Aug-06																																																
Reference 20 dB Attenuator	SN: S5086 (20b)	4-Apr-06 (METAS, No. 251-00558)	Apr-07																																																
Reference 30 dB Attenuator	SN: S5129 (30b)	11-Aug-05 (METAS, No. 251-00500)	Aug-06																																																
Reference Probe ES3DV2	SN: 3013	2-Jan-06 (SPEAG, No. ES3-3013_Jan06)	Jan-07																																																
DAE4	SN: 654	2-Feb-06 (SPEAG, No. DAE4-654_Feb06)	Feb-07																																																
Secondary Standards	ID #	Check Date (in house)	Scheduled Check																																																
RF generator HP 8648C	US3842LU01700	4-Aug-99 (SPEAG, in house check Nov-05)	In house check: Nov-07																																																
Network Analyzer HP 8753E	US37390585	18-Oct-01 (SPEAG, in house check Nov-05)	In house check: Nov 06																																																
Calibrated by:	Name Kaja Petrovic	Function Technical Manager	Signature 																																																
Approved by:	Name Fin Bommeli	Function R&D Director	Signature 																																																
			Issued: May 26, 2006																																																
This calibration certificate shall not be reproduced except in full without written approval of the laboratory.																																																			

Calibration Laboratory of  
Schmid & Partner  
Engineering AG  
Zaughausstrasse 43, 8004 Zurich, Switzerland



S Schweizerischer Kalibrierdienst  
C Service suisse d'étalonnage  
S Servizio svizzero di taratura  
S Swiss Calibration Service

Accredited by the Swiss Federal Office of Metrology and Accreditation  
The Swiss Accreditation Service is one of the signatories to the EA  
Multilateral Agreement for the recognition of calibration certificates

Accreditation No.: SCS 108

#### Glossary:

TSL	tissue simulating liquid
NORM <sub>x,y,z</sub>	sensitivity in free space
ConF	sensitivity in TSL / NORM <sub>x,y,z</sub>
DCP	diode compression point
Polarization $\varphi$	$\varphi$ rotation around probe axis
Polarization $\vartheta$	$\vartheta$ rotation around an axis that is in the plane normal to probe axis (at measurement center), i.e., $\vartheta = 0$ is normal to probe axis

#### Calibration is Performed According to the Following Standards:

- IEEE Std 1528-2003, "IEEE Recommended Practice for Determining the Peak Spatial-Averaged Specific Absorption Rate (SAR) in the Human Head from Wireless Communications Devices: Measurement Techniques", December 2003
- CENELEC EN 50361, "Basic standard for the measurement of Specific Absorption Rate related to human exposure to electromagnetic fields from mobile phones (300 MHz - 3 GHz)", July 2001

#### Methods Applied and Interpretation of Parameters:

- NORM<sub>x,y,z</sub>**: Assessed for E-field polarization  $\vartheta = 0$  ( $f \leq 900$  MHz in TEM-cell;  $f > 1800$  MHz: R22 waveguide). NORM<sub>x,y,z</sub> are only intermediate values, i.e., the uncertainties of NORM<sub>x,y,z</sub> does not effect the E<sup>2</sup>-field uncertainty inside TSL (see below *ConvF*).
- NORM(f)<sub>x,y,z</sub> = NORM<sub>x,y,z</sub> \* frequency\_response** (see Frequency Response Chart). This linearization is implemented in DASY4 software versions later than 4.2. The uncertainty of the frequency response is included in the stated uncertainty of *ConvF*.
- DCP<sub>x,y,z</sub>**: DCP are numerical linearization parameters assessed based on the data of power sweep (no uncertainty required). DCP does not depend on frequency nor media.
- ConvF and Boundary Effect Parameters**: Assessed in flat phantom using E-field (or Temperature Transfer Standard for  $f \leq 800$  MHz) and inside waveguide using analytical field distributions based on power measurements for  $f > 800$  MHz. The same setups are used for assessment of the parameters applied for boundary compensation (alpha, depth) of which typical uncertainty values are given. These parameters are used in DASY4 software to improve probe accuracy close to the boundary. The sensitivity in TSL corresponds to NORM<sub>x,y,z</sub> \* ConvF whereby the uncertainty corresponds to that given for ConvF. A frequency dependent ConvF is used in DASY version 4.4 and higher which allows extending the validity from  $\pm 50$  MHz to  $\pm 100$  MHz.
- Spherical isotropy (3D deviation from isotropy)**: in a field of low gradients realized using a flat phantom exposed by a patch antenna.
- Sensor Offset**: The sensor offset corresponds to the offset of virtual measurement center from the probe tip (on probe axis). No tolerance required.

EX3DV3 SN:3507

May 26, 2006

# Probe EX3DV3

## SN:3507

Manufactured: December 15, 2003  
Last calibrated: April 12, 2005  
Recalibrated: May 26, 2006

Calibrated for DASY Systems

(Note: non-compatible with DASY2 system!)

EX3DV3 SN:3507

May 26, 2006

## DASY - Parameters of Probe: EX3DV3 SN:3507

### Sensitivity in Free Space<sup>A</sup>

Norm	Value	Unit	Diode Compression <sup>B</sup>	Value
NormX	0.695 ± 10.1%	$\mu\text{V}/(\text{V}/\text{m})^2$	DCP X	96 mV
NormY	0.745 ± 10.1%	$\mu\text{V}/(\text{V}/\text{m})^2$	DCP Y	96 mV
NormZ	0.727 ± 10.1%	$\mu\text{V}/(\text{V}/\text{m})^2$	DCP Z	96 mV

### Diode Compression<sup>B</sup>

### Sensitivity in Tissue Simulating Liquid (Conversion Factors)

Please see Page 8.

### Boundary Effect

TSL                      900 MHz      Typical SAR gradient: 5 % per mm

Sensor Center to Phantom Surface Distance	2.0 mm	3.0 mm
SAR <sub>be</sub> [%]      Without Correction Algorithm	3.1	1.3
SAR <sub>be</sub> [%]      With Correction Algorithm	0.0	0.1

TSL                      1810 MHz      Typical SAR gradient: 10 % per mm

Sensor Center to Phantom Surface Distance	2.0 mm	3.0 mm
SAR <sub>be</sub> [%]      Without Correction Algorithm	1.6	0.7
SAR <sub>be</sub> [%]      With Correction Algorithm	0.3	0.2

### Sensor Offset

Probe Tip to Sensor Center                      1.0 mm

The reported uncertainty of measurement is stated as the standard uncertainty of measurement multiplied by the coverage factor k=2, which for a normal distribution corresponds to a coverage probability of approximately 95%.

<sup>A</sup> The uncertainties of NormX,Y,Z do not affect the E<sup>2</sup>-field uncertainty inside TSL (see Page 8).

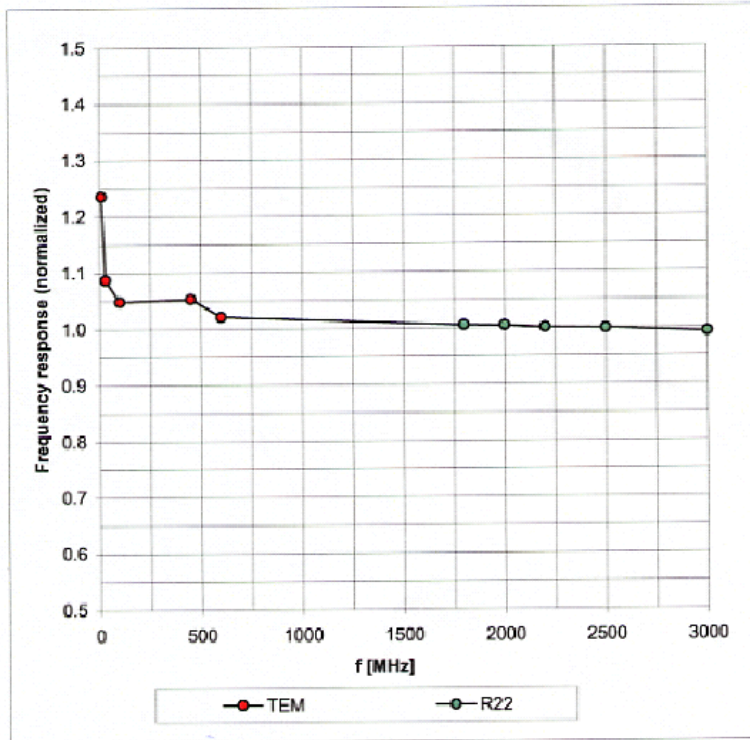
<sup>B</sup> Numerical linearization parameter: uncertainty not required.

EX3DV3 SN:3507

May 26, 2006

## Frequency Response of E-Field

(TEM-Cell:ifi110 EXX, Waveguide: R22)

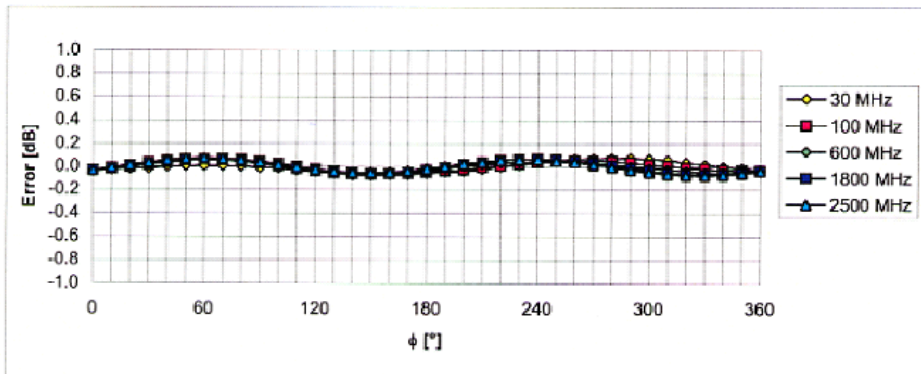
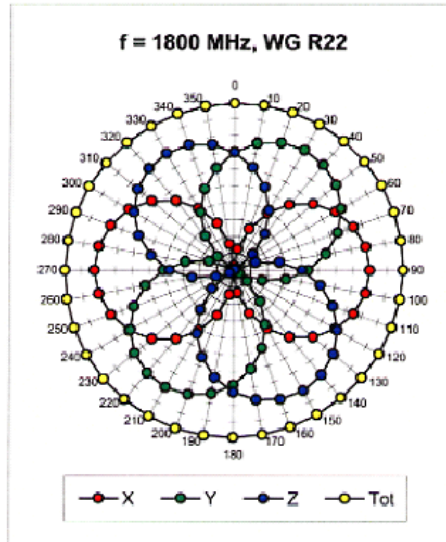
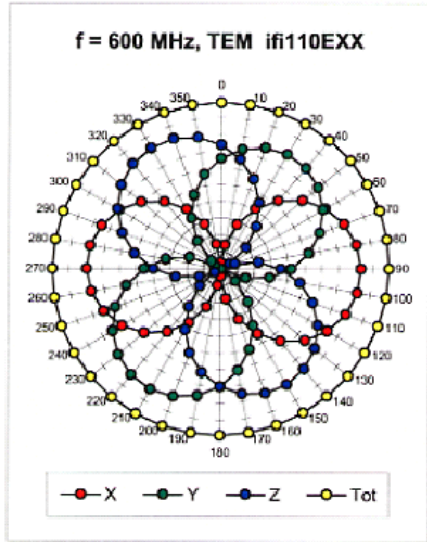


Uncertainty of Frequency Response of E-field:  $\pm 6.3\%$  ( $k=2$ )

EX3DV3 SN:3507

May 26, 2006

Receiving Pattern ( $\phi$ ),  $\theta = 0^\circ$

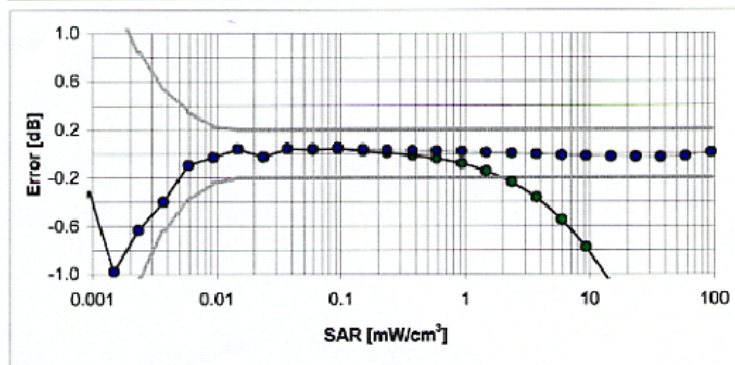
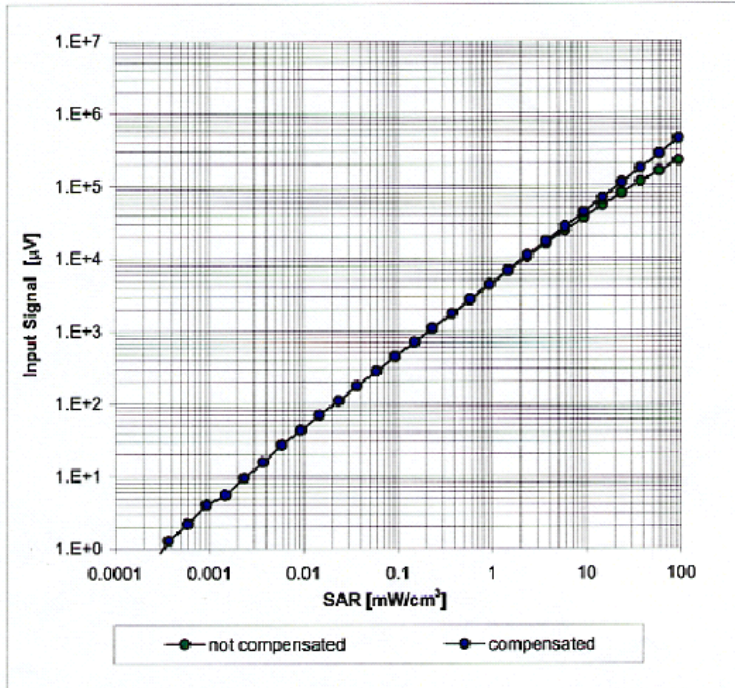


Uncertainty of Axial Isotropy Assessment:  $\pm 0.5\%$  (k=2)

EX3DV3 SN:3507

May 26, 200

### Dynamic Range $f(\text{SAR}_{\text{head}})$ (Waveguide R22, $f = 1800 \text{ MHz}$ )

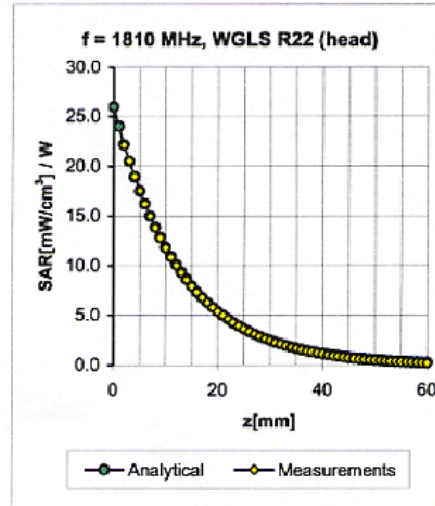
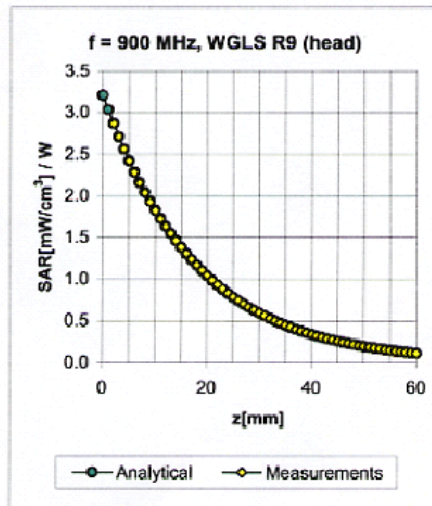


Uncertainty of Linearity Assessment:  $\pm 0.6\%$  ( $k=2$ )

EX3DV3 SN:3507

May 26, 2006

## Conversion Factor Assessment



f [MHz]	Validity [MHz] <sup>c</sup>	TSL	Permittivity	Conductivity	Alpha	Depth	ConvF	Uncertainty
450	± 50 / ± 100	Head	43.5 ± 5%	0.87 ± 5%	0.37	0.74	10.80	± 13.3% (k=2)
900	± 50 / ± 100	Head	41.5 ± 5%	0.97 ± 5%	0.21	1.03	10.62	± 11.0% (k=2)
1810	± 50 / ± 100	Head	40.0 ± 5%	1.40 ± 5%	0.45	0.70	9.28	± 11.0% (k=2)
2450	± 50 / ± 100	Head	39.2 ± 5%	1.80 ± 5%	0.51	0.74	8.26	± 11.8% (k=2)
5200	± 50 / ± 100	Head	36.0 ± 5%	4.66 ± 5%	0.30	1.80	5.31	± 13.1% (k=2)
5500	± 50 / ± 100	Head	35.6 ± 5%	4.96 ± 5%	0.30	1.80	4.95	± 13.1% (k=2)
5800	± 50 / ± 100	Head	35.3 ± 5%	5.27 ± 5%	0.30	1.80	4.82	± 13.1% (k=2)
450	± 50 / ± 100	Body	56.7 ± 5%	0.94 ± 5%	0.47	0.50	11.90	± 13.3% (k=2)
900	± 50 / ± 100	Body	55.0 ± 5%	1.05 ± 5%	0.66	0.62	10.46	± 11.0% (k=2)
1810	± 50 / ± 100	Body	53.3 ± 5%	1.52 ± 5%	0.35	0.95	8.83	± 11.0% (k=2)
2450	± 50 / ± 100	Body	52.7 ± 5%	1.95 ± 5%	0.51	0.74	8.24	± 11.8% (k=2)
5200	± 50 / ± 100	Body	49.0 ± 5%	5.30 ± 5%	0.28	1.90	4.91	± 13.1% (k=2)
5500	± 50 / ± 100	Body	48.6 ± 5%	5.65 ± 5%	0.28	1.90	4.61	± 13.1% (k=2)
5800	± 50 / ± 100	Body	48.2 ± 5%	6.00 ± 5%	0.25	1.90	4.77	± 13.1% (k=2)

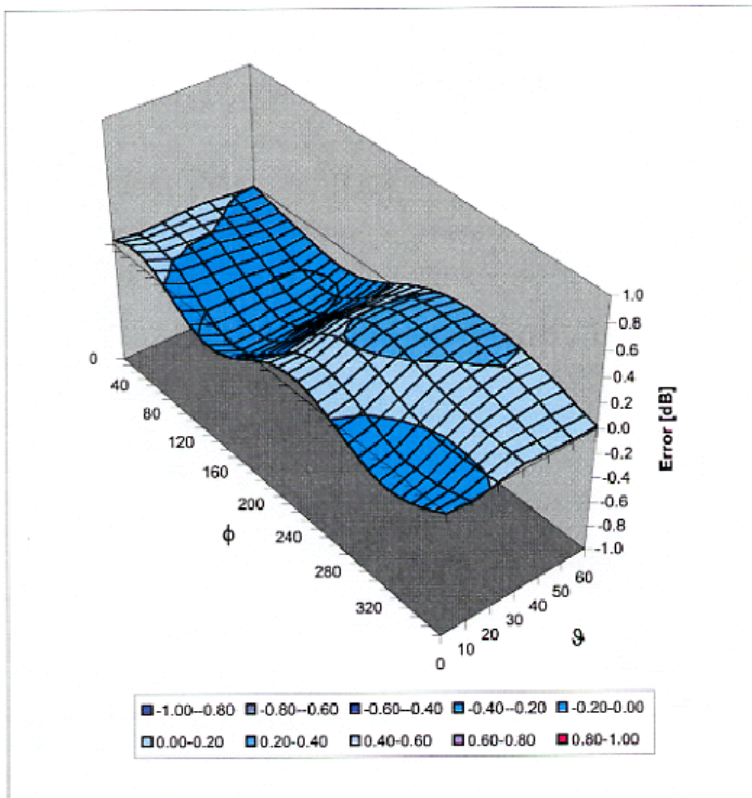
<sup>c</sup> The validity of ± 100 MHz only applies for DASY v4.4 and higher (see Page 2). The uncertainty is the RSS of the ConvF uncertainty at calibration frequency and the uncertainty for the indicated frequency band.

EX3DV3 SN:3507

May 26, 2006

### Deviation from Isotropy in HSL

Error ( $\phi, \theta$ ),  $f = 900$  MHz



Uncertainty of Spherical Isotropy Assessment:  $\pm 2.6\%$  ( $k=2$ )

### 13. References

- [1]ANSI, ANSI/IEEE C95.1-1992: IEEE Standard for Safety Levels with Respect to Human Exposure to Radio Frequency Electromagnetic Fields, 3 kHz to 300 GHz, The Institute of Electrical and Electronics Engineers, Inc., New York, NY 10017, 1992.
- [2] Katja Pokovic, Thomas Schmid, and Niels Kuster, "Robust setup for precise calibration of E-field probes in tissue simulating liquids at mobile communications frequencies", in ICECOM '97, Dubrovnik, October 15-17, 1997, pp. 120-124.
- [3] Katja Pokovic, Thomas Schmid, and Niels Kuster, "E-field probe with improved isotropy in brain simulating liquids", in Proceedings of the ELMAR, Zadar, Croatia, 23-25 June, 1996, pp.172-175.
- [4] W. Gander, Computermathematik, Birkhaeuser, Basel, 1992.
- [5] W. H. Press, S. A. Teukolsky, W. T. Vetterling, and B. P. Flannery, Numerical Recipes in C, The Art of Scientific Computing, Second Edition, Cambridge University Press, 1992.
- [6]SPEAG uncertainty document for DASY 4 System from SPEAG (Shimid & Partner Engineering AG).
- [7]SPEAG uncertainty document for "the 5-6GHz Extension" from SPEAG (Shimid & Partner Engineering AG).