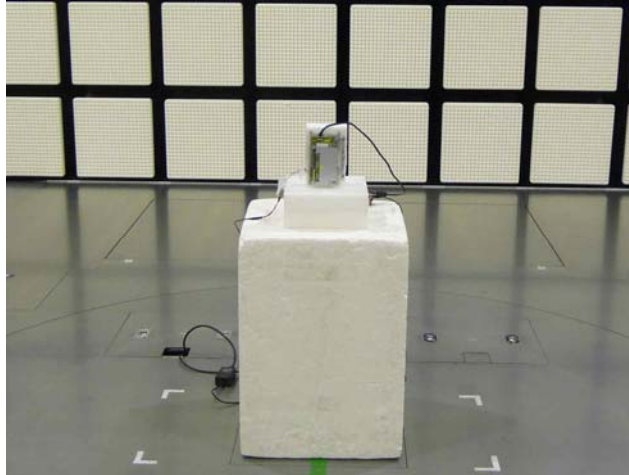


APPENDIX 3: Photographs of test setup

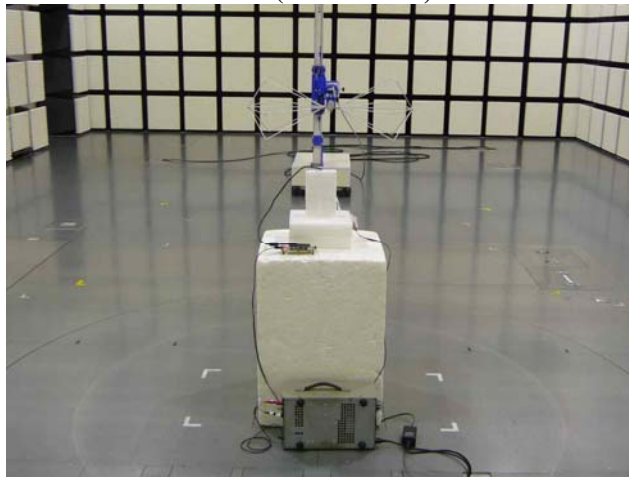
Radiated emission

Monopole antenna

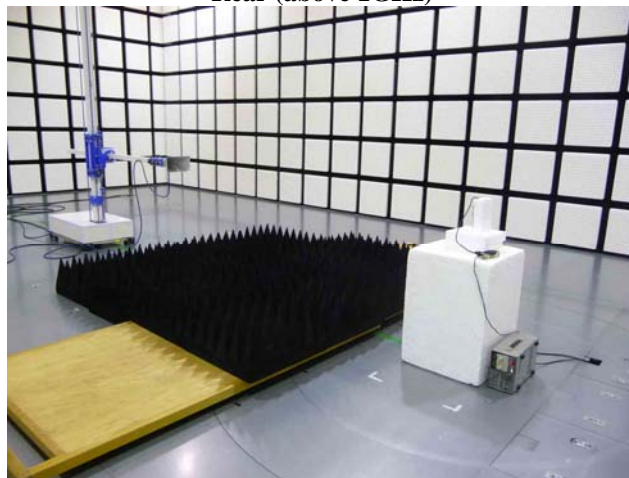
Front



Rear (below 1GHz)



Rear (above 1GHz)



UL Japan, Inc.

Shonan EMC Lab.

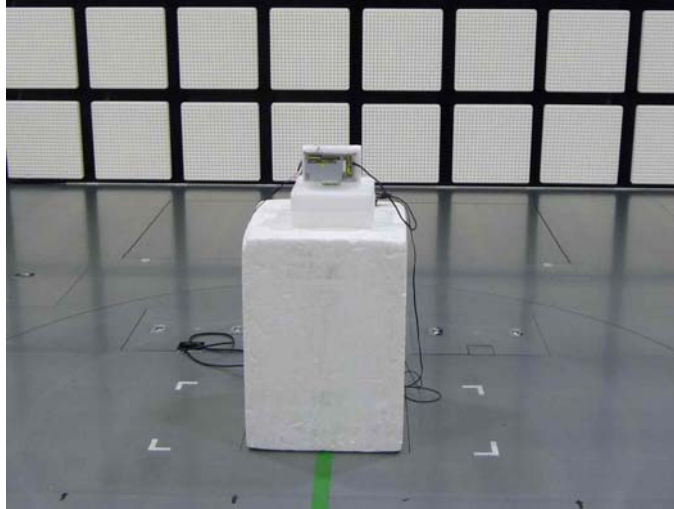
1-22-3 Megumigaoka, Hiratsuka-shi, Kanagawa-ken, 259-1220 JAPAN

Telephone : +81 463 50 6400

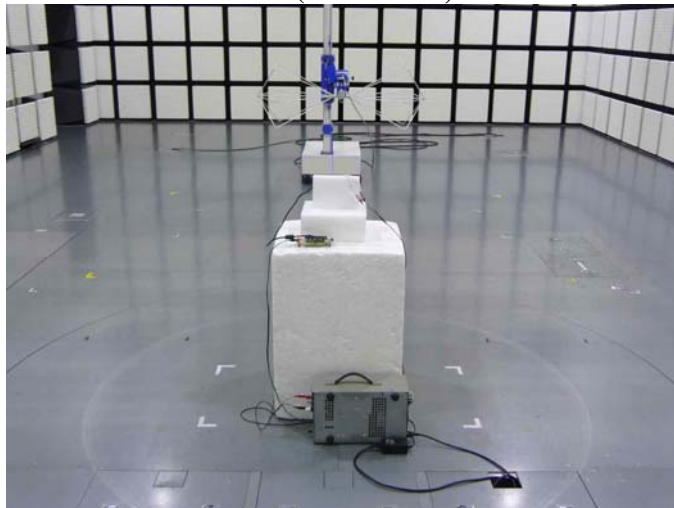
Facsimile : +81 463 50 6401

Dipole antenna

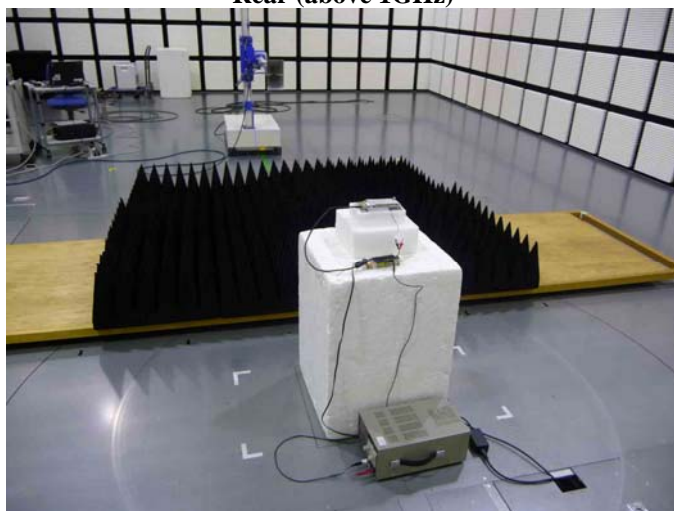
Front



Rear (below 1GHz)



Rear (above 1GHz)



UL Japan, Inc.

Shonan EMC Lab.

1-22-3 Megumigaoka, Hiratsuka-shi, Kanagawa-ken, 259-1220 JAPAN

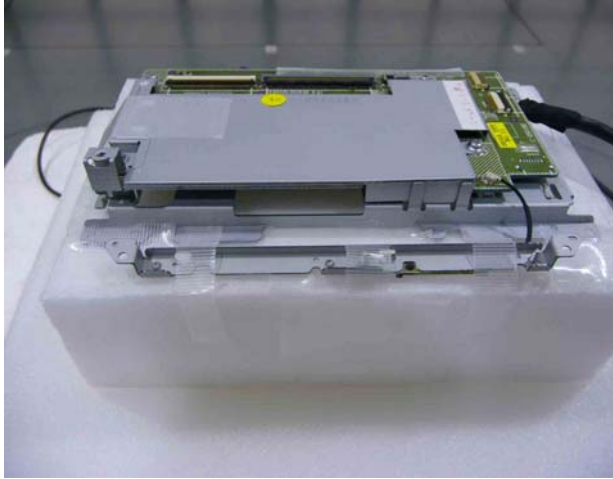
Telephone : +81 463 50 6400

Facsimile : +81 463 50 6401

Pre-check of the worst position: Module & Antenna

Monopole antenna

X-axis



Y-axis

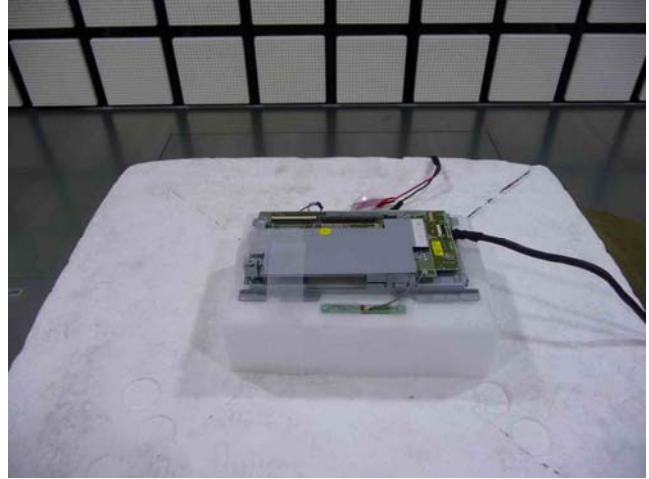


Z-axis

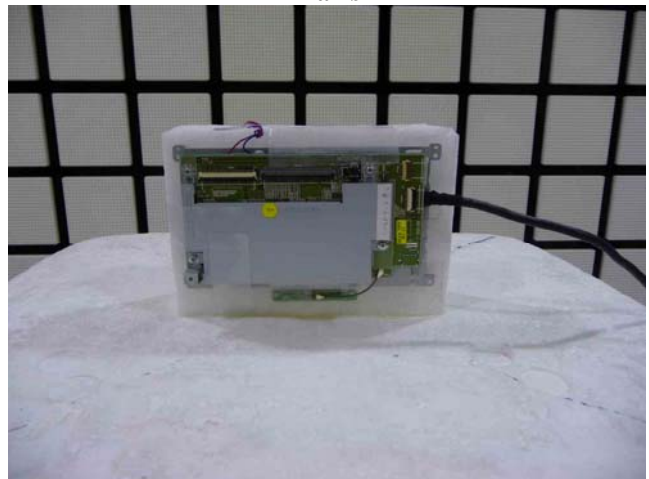


Dipole antenna

X-axis



Y-axis



Z-axis



UL Japan, Inc.

Shonan EMC Lab.

1-22-3 Megumigaoka, Hiratsuka-shi, Kanagawa-ken, 259-1220 JAPAN

Telephone : +81 463 50 6400

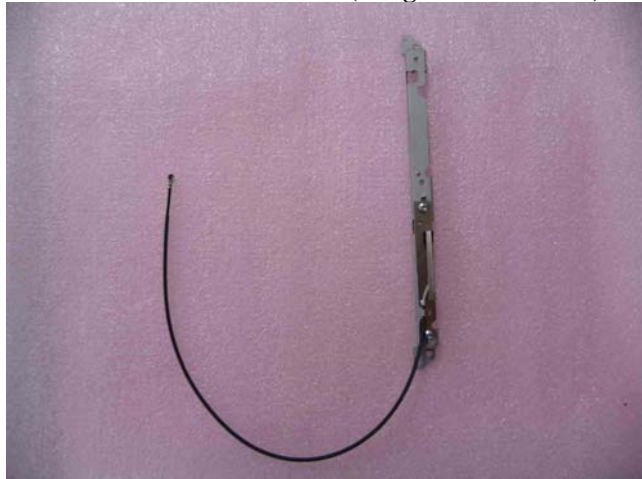
Facsimile : +81 463 50 6401

Antenna type

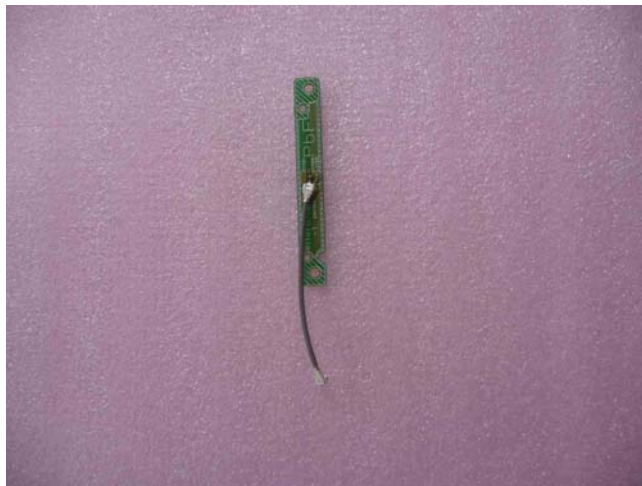
Model: N1KYYYYY00019 (Shorter cable: 0.03m)



Model: N1KYYYYY00030 (Longer cable: 0.22m)



Model: BT-MAIN-001



END OF REPORT

UL Japan, Inc.

Shonan EMC Lab.

1-22-3 Megumigaoka, Hiratsuka-shi, Kanagawa-ken, 259-1220 JAPAN

Telephone : +81 463 50 6400

Facsimile : +81 463 50 6401