

Request for Limited Modular Transmitter Approval Checklist

July 14, 2014
PAS-14-F007

Re: Original Certification for Limited Modular Approval for
Bluetooth Board Assembly Model YEAP01A466 under FCC ID: ACJ932YEAP01A466

The subject Bluetooth Board Assembly, Model YEAP01A466 under FCC ID: ACJ932YEAP01A466 is designed by Panasonic Automotive & Industrial Systems Company. This modular transmitter will be equipped and used only in Car Audio, which is produced by Panasonic Corporation. The modular transmitter complies with the module basic requirement (Item 1 to 8) in FCC Part 15 Subpart C Section 15.212 as indicated below:

Modular approval requirement	Yes	No
(1) Have its own RF shielding.	<input checked="" type="checkbox"/>	<input type="checkbox"/>
(2) Have buffered modulation/data inputs.	<input checked="" type="checkbox"/>	<input type="checkbox"/>
(3) Have its own power supply regulation.	<input checked="" type="checkbox"/>	<input type="checkbox"/>
(4) Comply with the antenna and transmission system requirements of § 15.203, 15.204(b) and 15.204(c).	<input checked="" type="checkbox"/>	<input type="checkbox"/>
(5) Tested in a stand-alone configuration. Unless the transmitter module will be battery powered, it must comply with the AC line conducted requirements found in FCC § 15.207. AC or DC power lines and data input/output lines connected to the module must not contain ferrites, unless they will be marketed with the module. The length of these lines shall be the length typical of actual use or, if that length is unknown, at least 10 centimeters to insure that there is no coupling between the case of the module and supporting equipment. Any accessories, peripherals, or support equipment connected to the module during testing shall be unmodified and commercially available.	<input type="checkbox"/>	<input checked="" type="checkbox"/> This module is only installed to devices for vehicles; therefore it will never be supplied AC power and the test for FCC §15.207 is not conducted. DC power lines and data input/output lines do not contain ferrites and the lengths of these lines are typical of actual use. All peripherals used during the testing are unmodified and commercially available. Please refer to the test report.
(6) Equipped with either a permanently affixed label or must be capable of electronically displaying its FCC ID. If the FCC ID is not visible when the module is installed inside another device, then the outside of the device into which the module is installed must also display a label referring to the enclosed module.	<input checked="" type="checkbox"/>	<input type="checkbox"/>
(7) Comply with any specific rules or operating requirements that ordinarily apply to a complete transmitter and the manufacturer must provide adequate instructions along with the module to explain any such requirements.	<input checked="" type="checkbox"/>	<input type="checkbox"/>
(8) Comply with any applicable RF exposure requirements in its final configuration: The modular transmitter complies with FCC radiation exposure requirement.	<input checked="" type="checkbox"/>	<input type="checkbox"/>

Request for Limited Modular Transmitter Approval

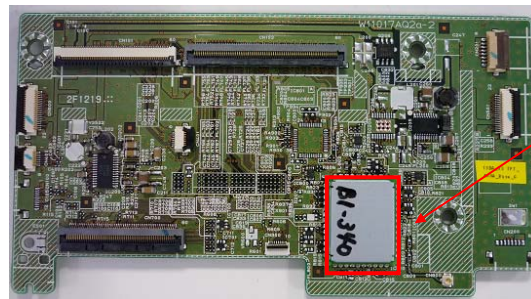
July 14, 2014
PAS-14-F007

Re: Original Certification for Limited Modular Approval for
Bluetooth Board Assembly Model YEAP01A466 under FCC ID: ACJ932YEAP01A466

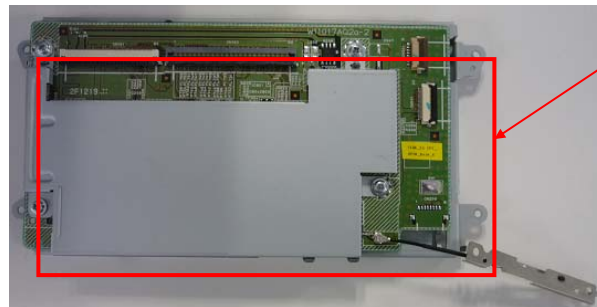
The subject Bluetooth Board Assembly, Model YEAP01A466 under FCC ID: ACJ932YEAP01A466 is designed by Panasonic Automotive & Industrial Systems Company. This modular transmitter will be equipped and used only in Car Audio, which is produced by Panasonic Corporation. The modular transmitter complies with the module basic requirement (Item 1 to 8) in FCC Part 15 Subpart C Section 15.212 as indicated below:

(1) Have its own shielding:

This modular transmitter has its own RF shielding, which covers the RF circuitry on the PWB. Refer to below photograph.



RF Block



Shield

(2) The modular transmitter must have buffered modulation/data inputs:

Data input to this modular transmitter is controlled as not generating excessive data speed and abnormal modulation.

(3) The modular transmitter must have its own power supply regulation:

The RF module is provided with stable power supply DC 3.3V and DC1.8V through the regulator, therefore, the equipment complies with the power supply regulation.

(4) The modular transmitter must comply with the antenna requirements of Section 15.203 and 15.204(c):

This equipment has a unique coupling antenna connector(U.FL) , and the installation is to be done by the professionals. Therefore, the equipment complies with the antenna requirement of section 15.203.

(5) Tested in a stand-alone configuration: The modular transmitter has been performed the testing as a stand alone and then confirmed the compliance.