

Fig 3. Internal View (TX-T5N72 / DC5N72)

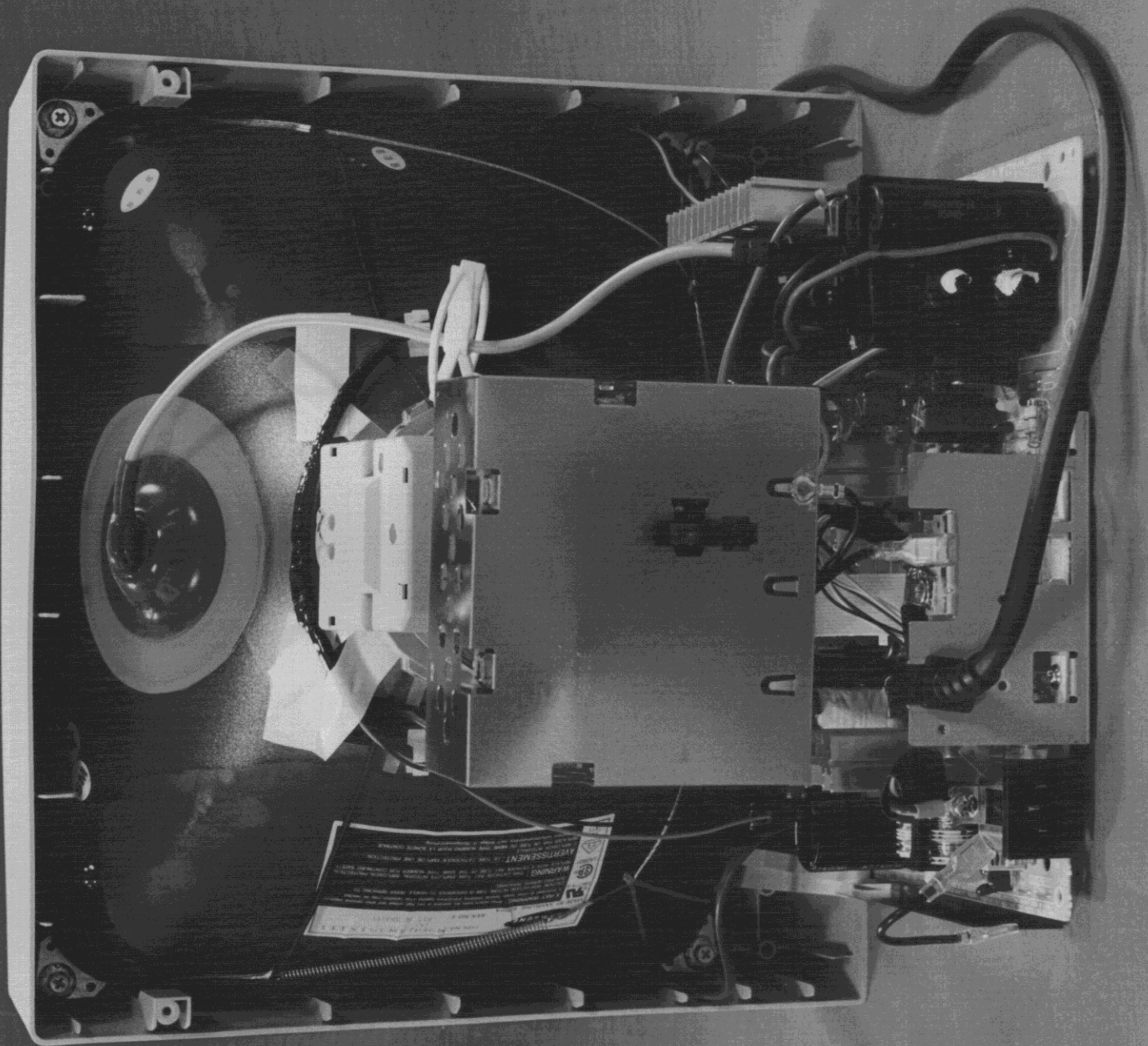


Fig 4. Internal View (TX-T5F72 / DC5F72)

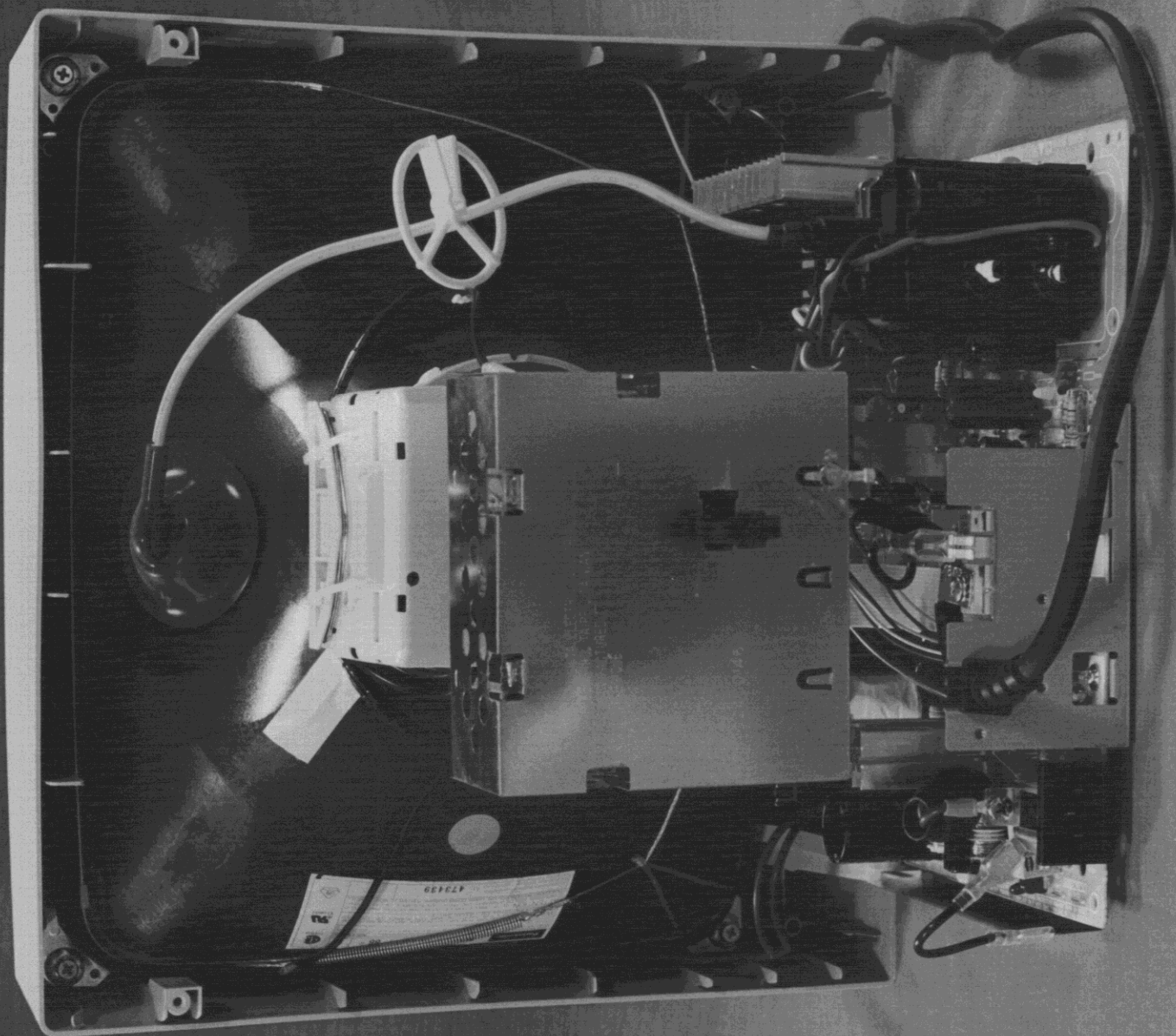




Fig 6. Main & CRT PWB, Component Side (TX-T5F72 / DC5F72)

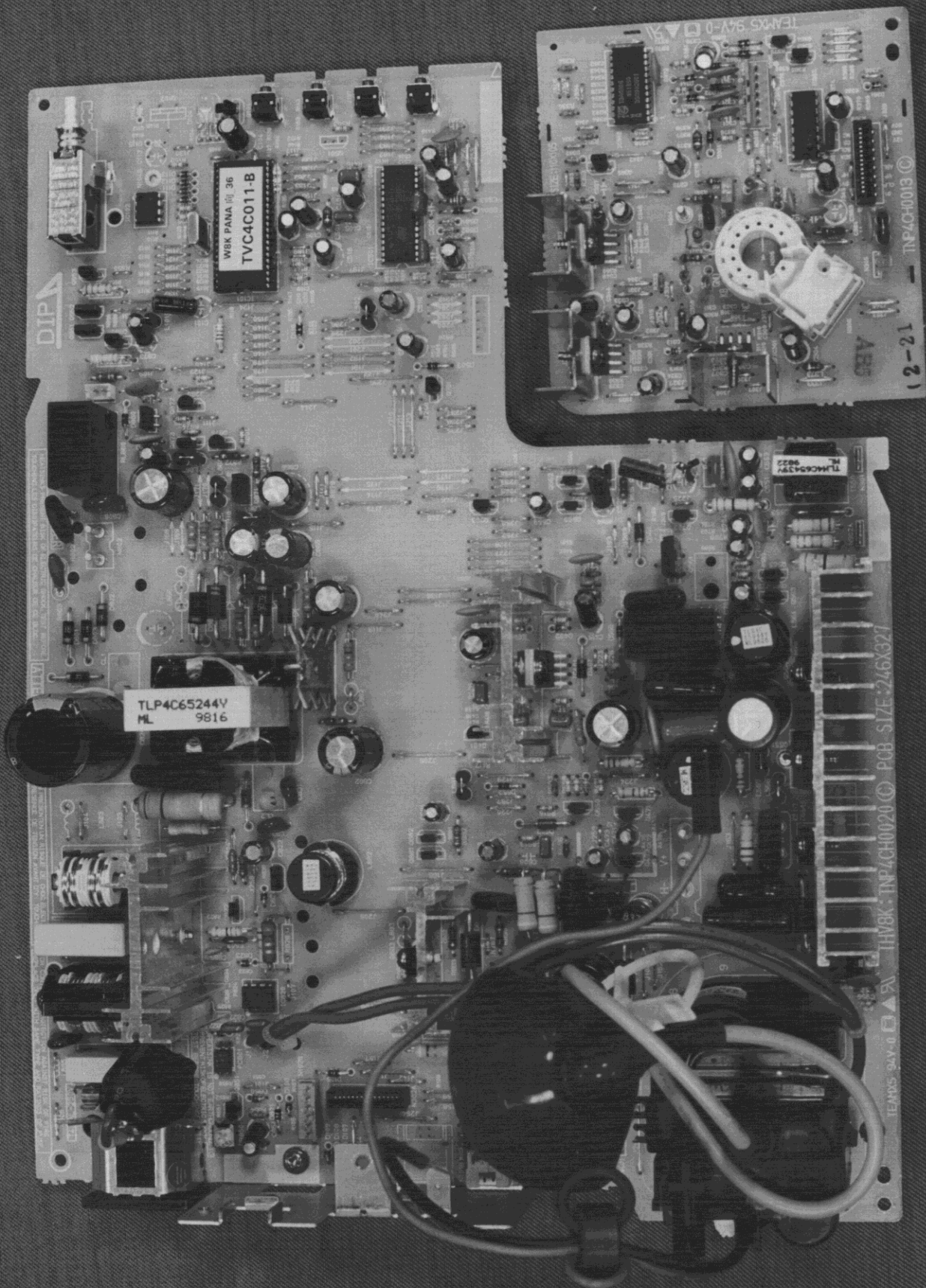


Fig 7. Main & CRT PWB, Foil Side (TX-T5N72 / DC5N72)

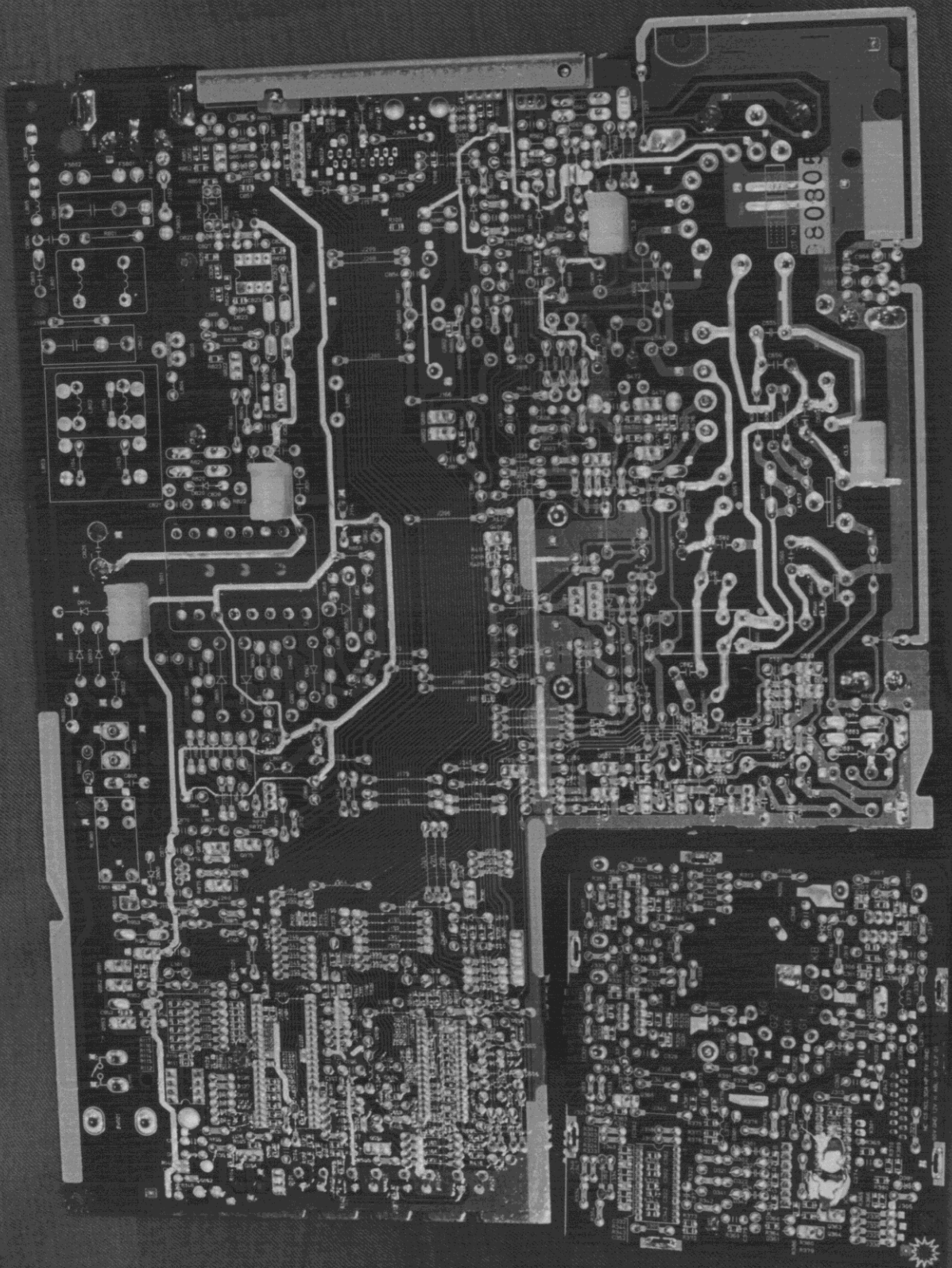


Fig 8. Main & CRT PWB, Foil Side (TX-T5F72 / DC5F72)

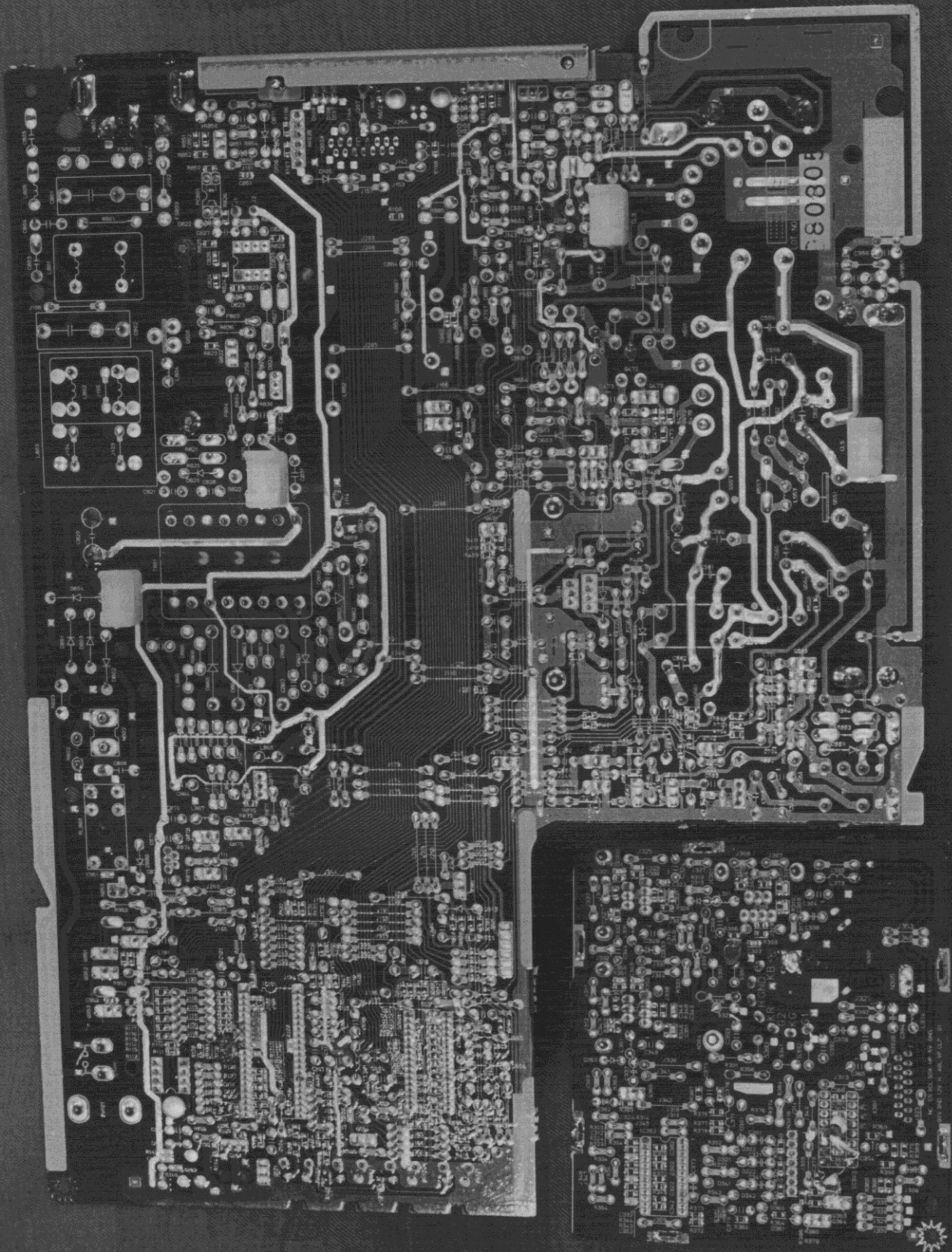


Fig 9. Shielded Signal Cable

