

Photo 3 Rear Inside view of Color Laser Printer with Rear Cabinet and Engine Board Cover Removed.



EXHIBIT #1-3  
Fly Control No.: KM6-98-F004  
FCC ID : ACJ5Z6KX-PS8101

**Photo 4** Left Side Inside view of Color Laser Printer with Left Cover and Main Control Cover removed.

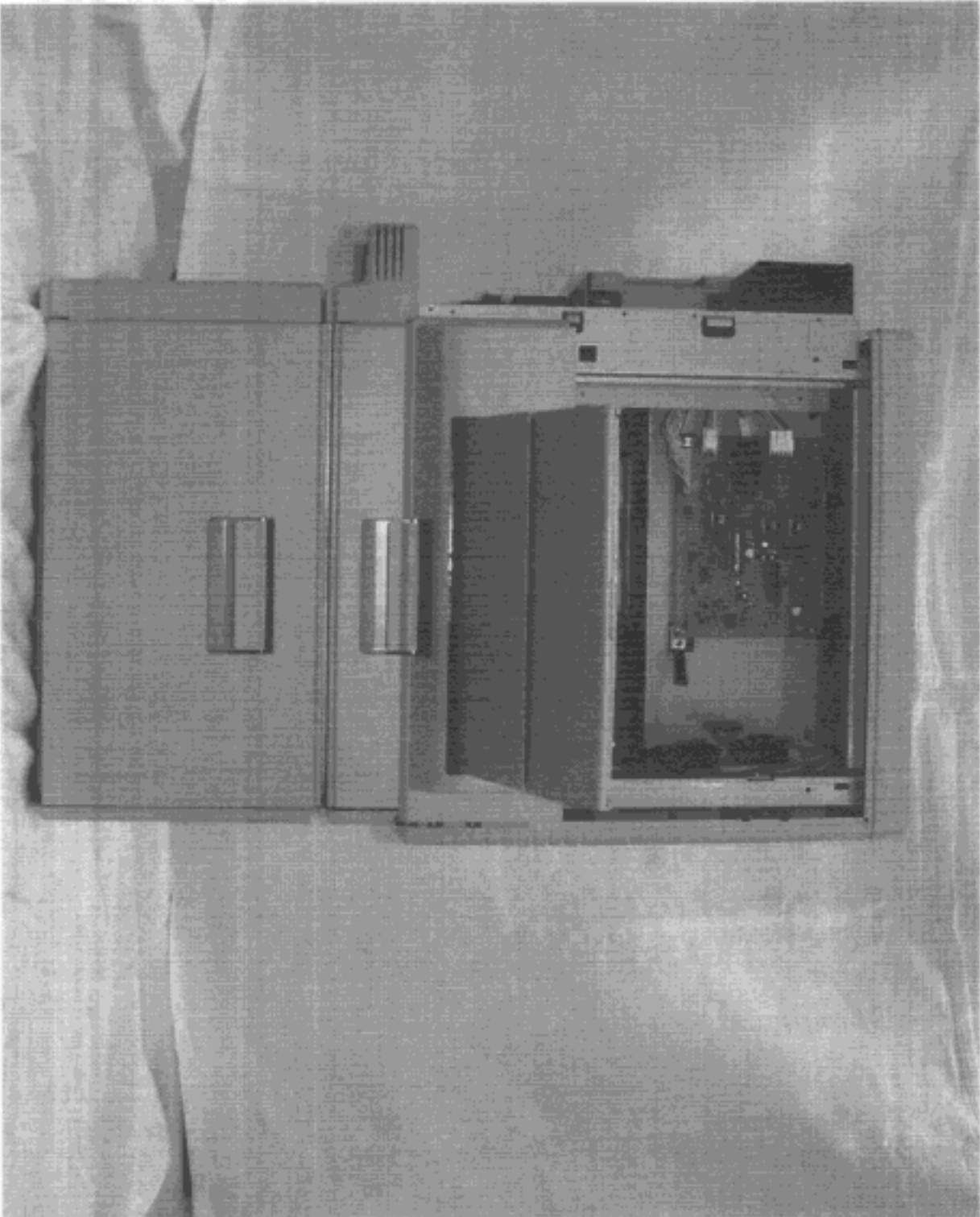


EXHIBIT #1-4  
Fty Control No.: KM6-98-F004  
FCC ID : ACJ5Z6KX-PS8101

Photo 5 Top view of Printer Main Control Board with Option Hard Disk, Frame and Expansion DIMM option added.

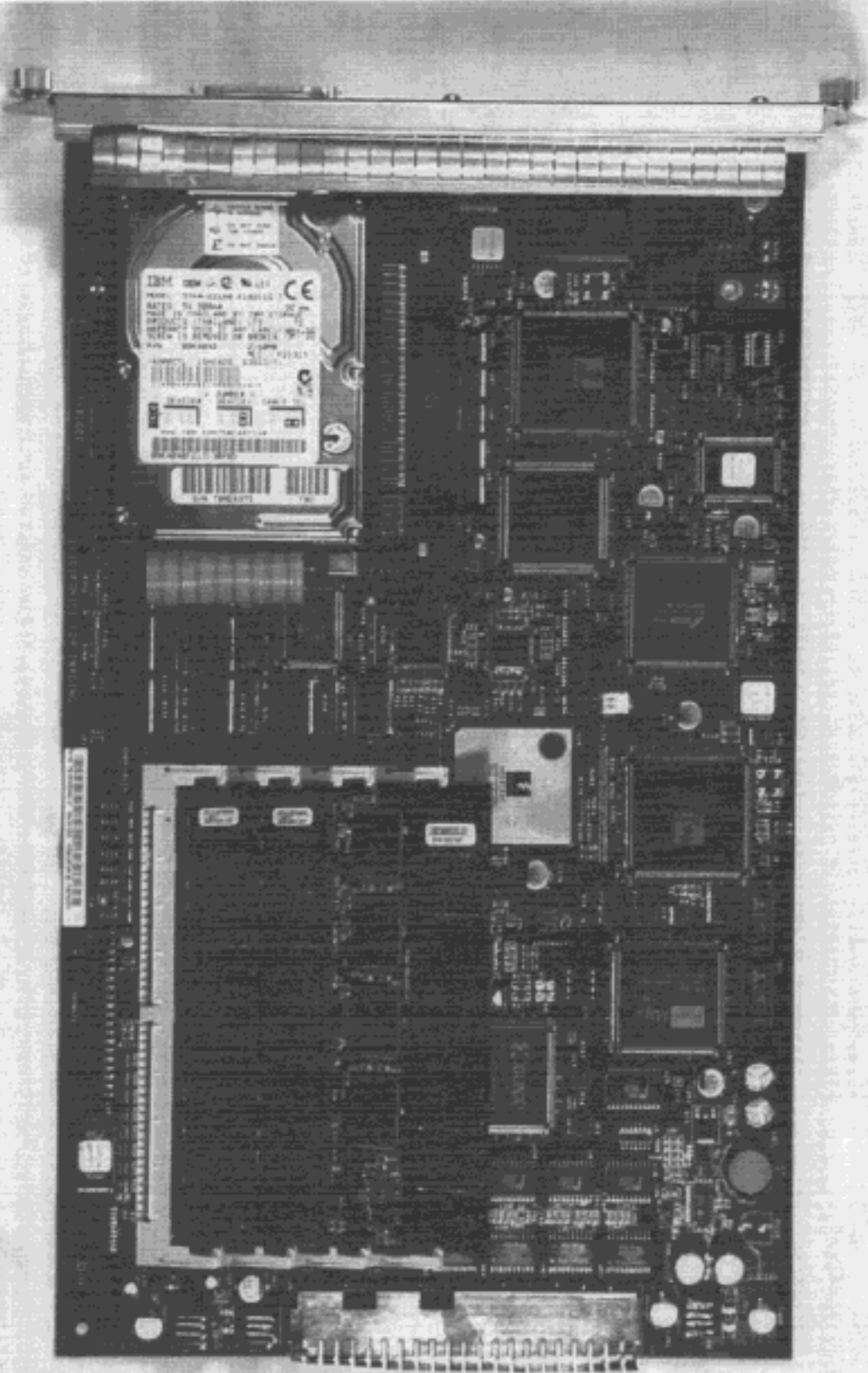
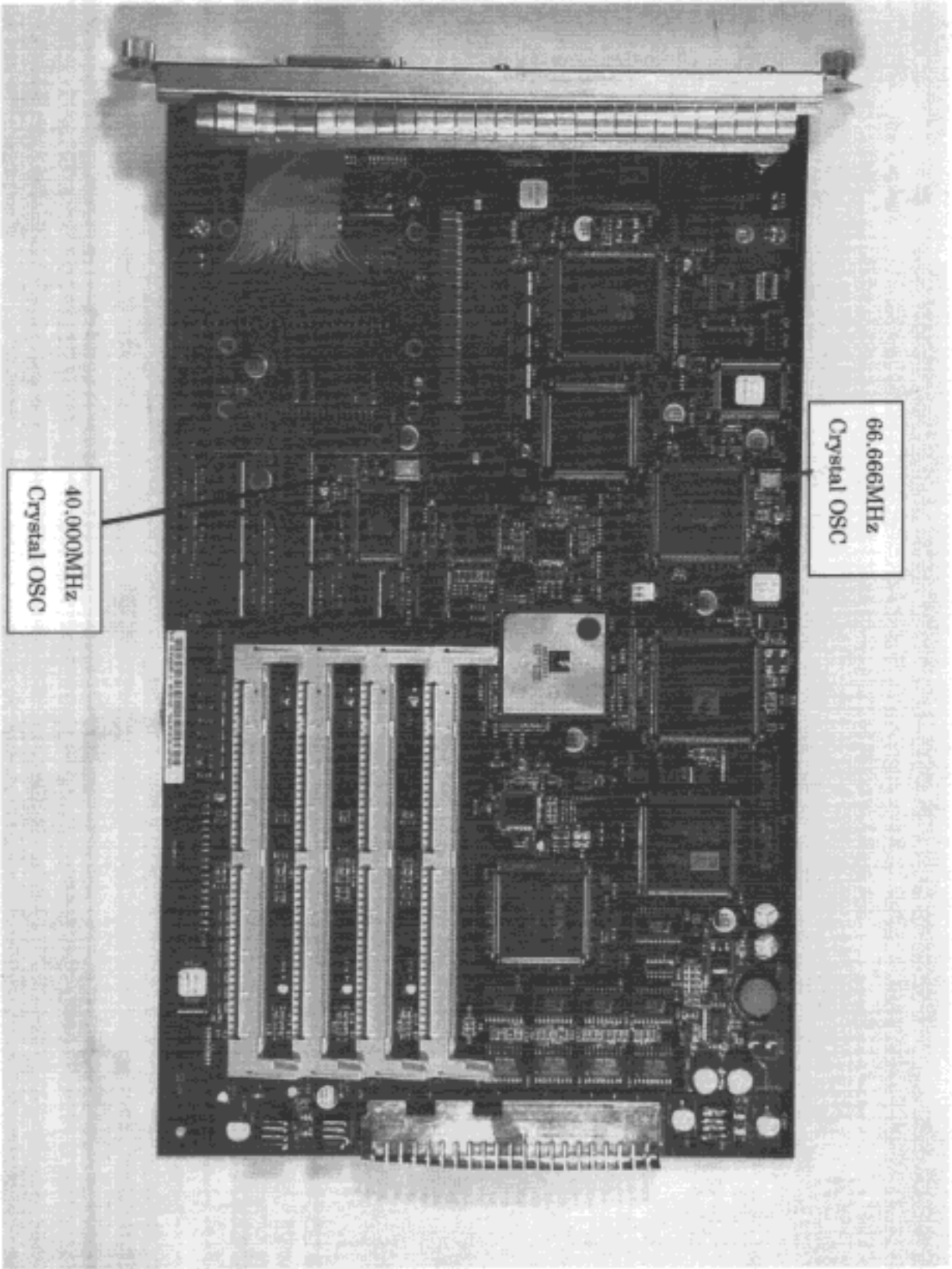


EXHIBIT #1-5  
Fly Control No.: KM0-98-F004  
FCC ID : ACJ5Z6KX-PS8101



66.666MHz  
Crystal OSC

40.000MHz  
Crystal OSC

Photo 6

Top view of Printer Main Control Board with Frame.

EXHIBIT #1-8  
Fly Control No.: KM6-98-F004  
FCC ID : ACJ5Z6KX-PS8101

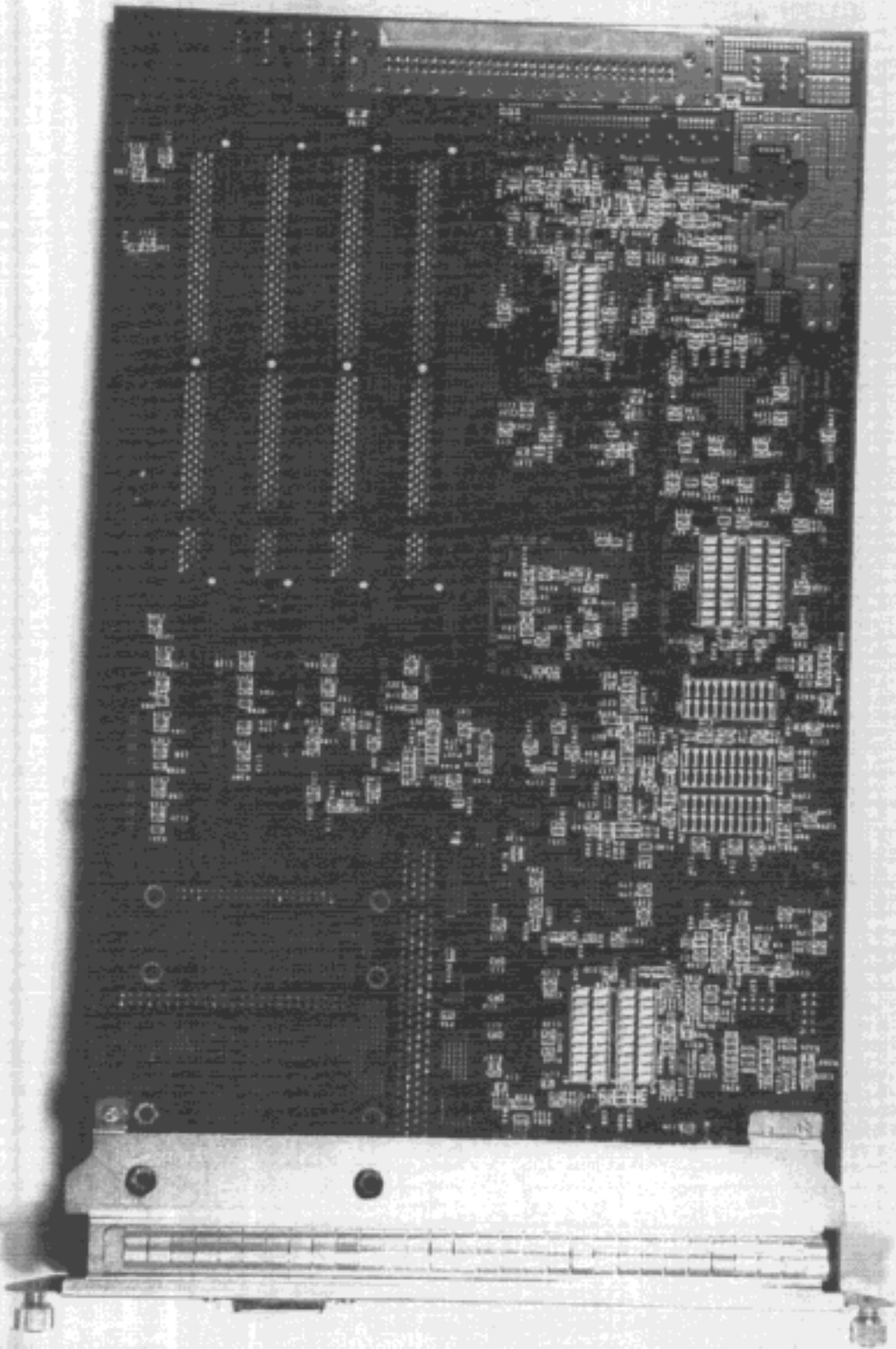


Photo 7

Bottom view of Printer Main Control Board with Frame.

EXHIBIT #1-7

Fty Control No: KM6-98-F004

FCC ID : ACJ526KX-PS8101

16M byte



32M Byte



64M Byte



Photo 8

Top view of Option DIMM Board.

EXHIBIT #1-8  
Fly Control No.: KM6-98-F004  
FCC ID : ACJ5Z6KX-PS8101

16M Byte



Photo 9

Bottom view of Option DIMM Board.

32M Byte



64M Byte

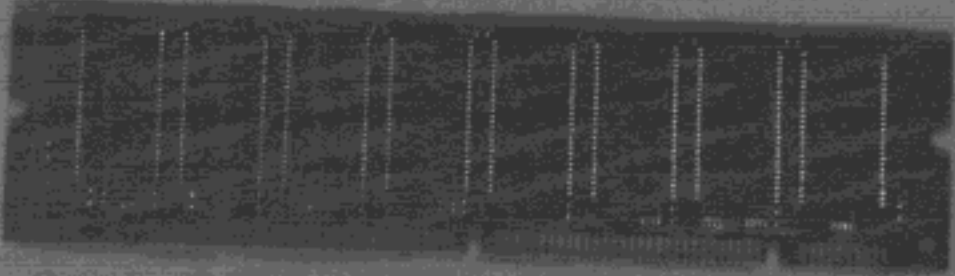


EXHIBIT #1-9

Fty Control No.: KM6-98-F004

FCC ID : ACJ526KX-FS8101

Photo 10 Top view of Option Hard Disk.



EXHIBIT #1-10  
Fly Control No.: KM6-98-F004  
FCC ID : ACJ5Z6KX-PS8101

Photo 11 Bottom view of Option Hard Disk

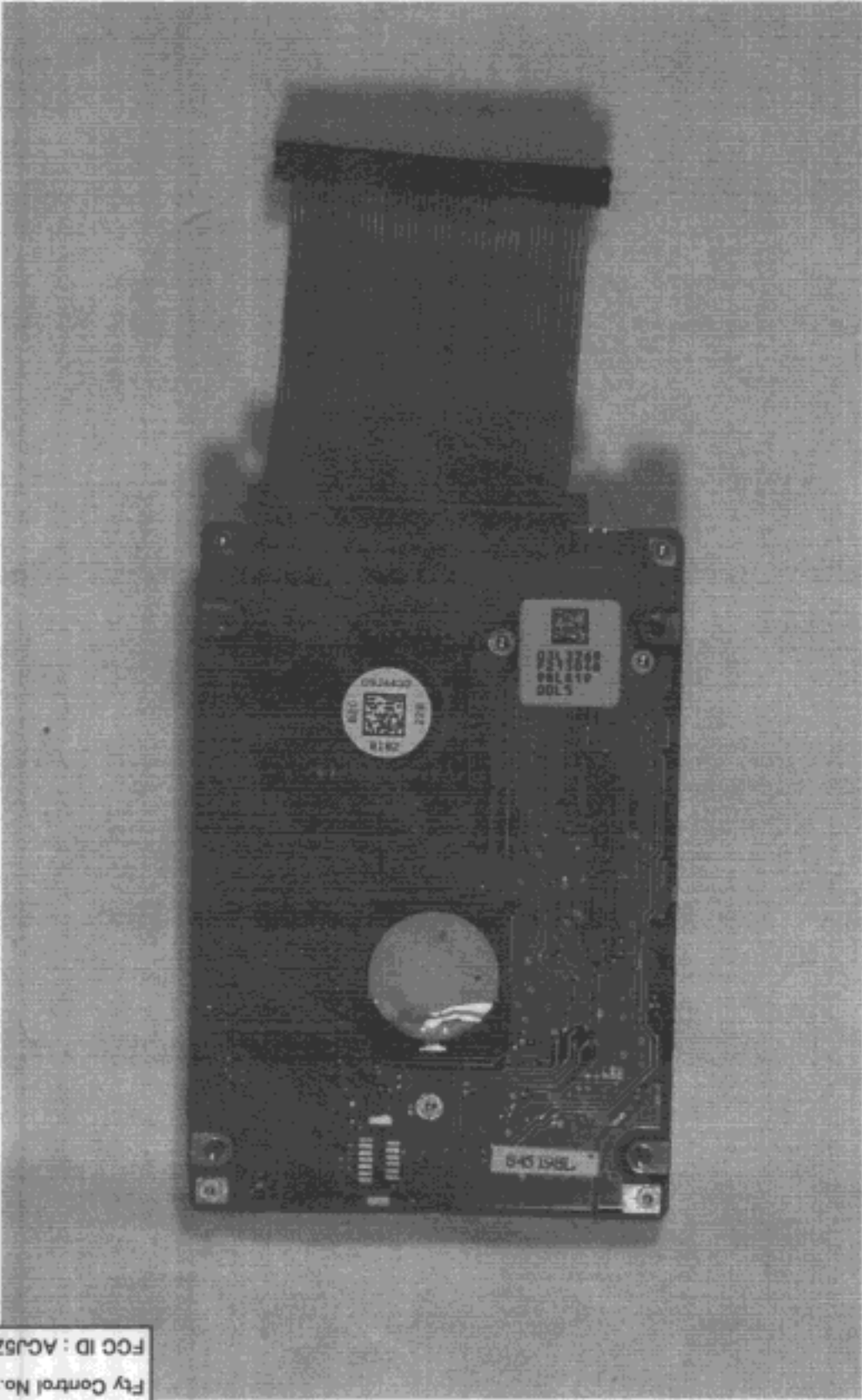


EXHIBIT #1-11  
Fty Control No: KM6-98-F004  
FCC ID : ACJ526KX-PS8101

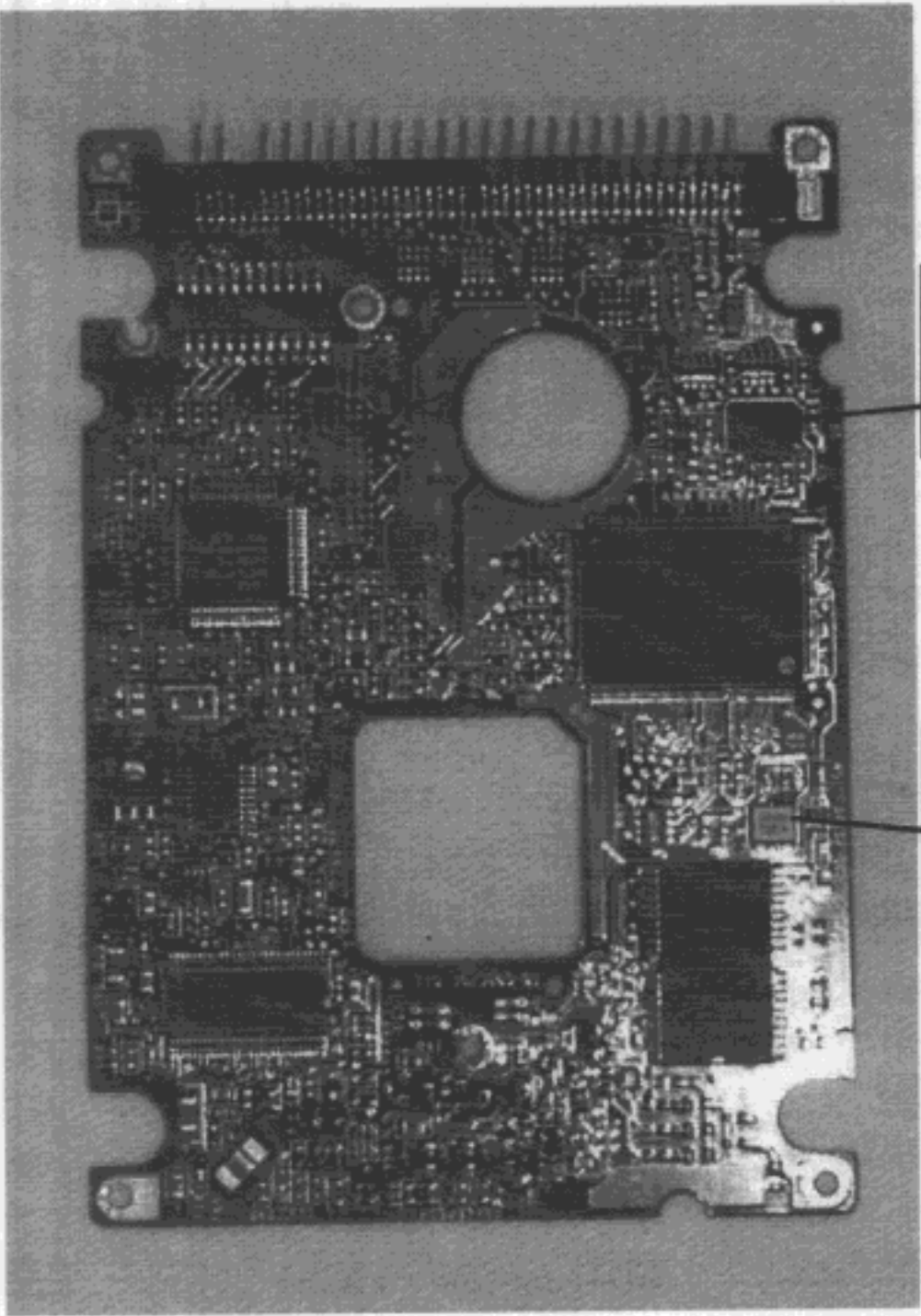


Photo 12

Top view of Option HDD Board.

EXHIBIT #1-12

Fly Control No.: KM6-98-F004

FCC ID : ACJ526KX-PS8101

Photo 13 Top view of Printer Engine Control Board.

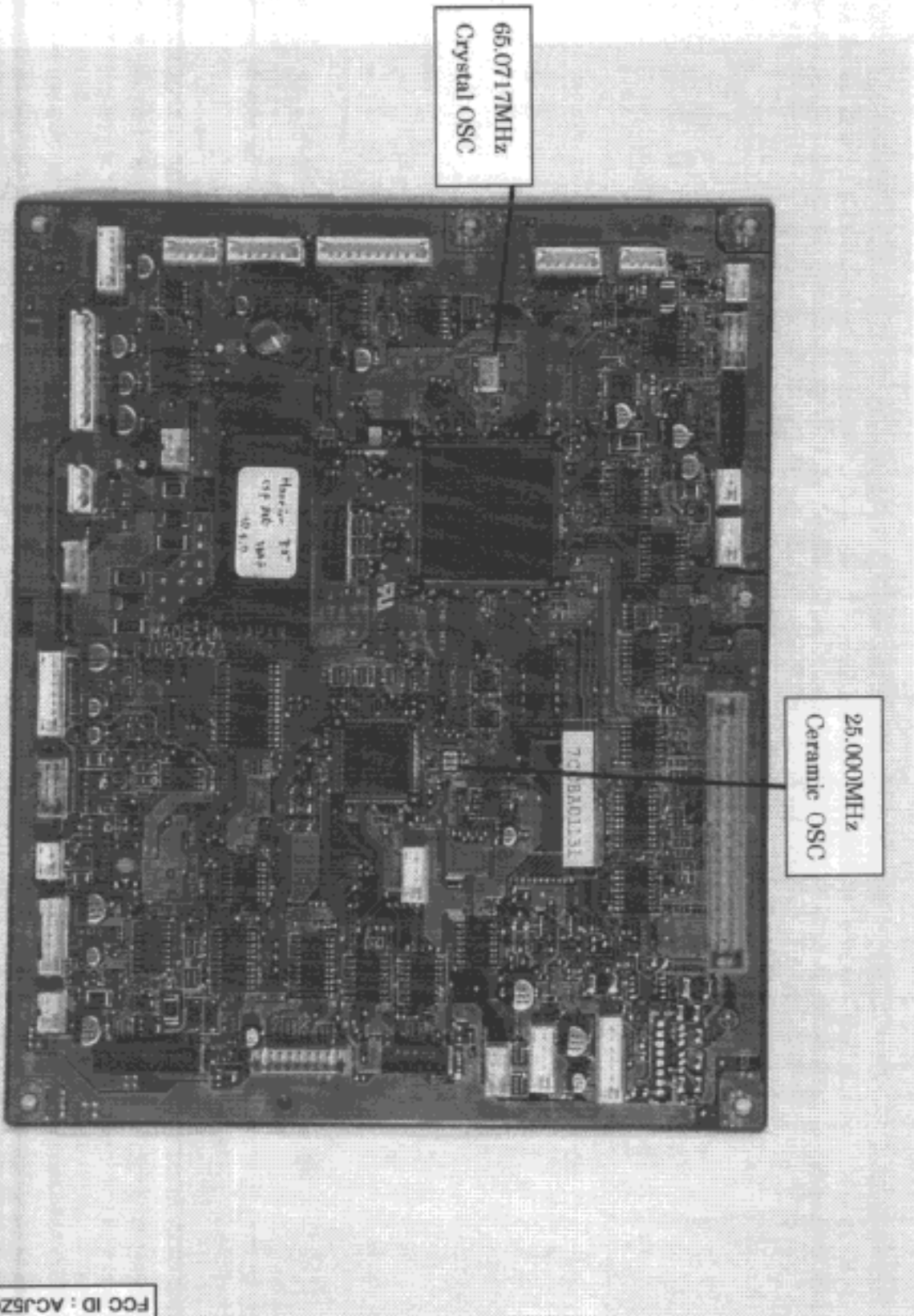


EXHIBIT #1-13  
Fty Control No.: KM6-98-F004  
FCC ID : ACJ526KX-PS8101

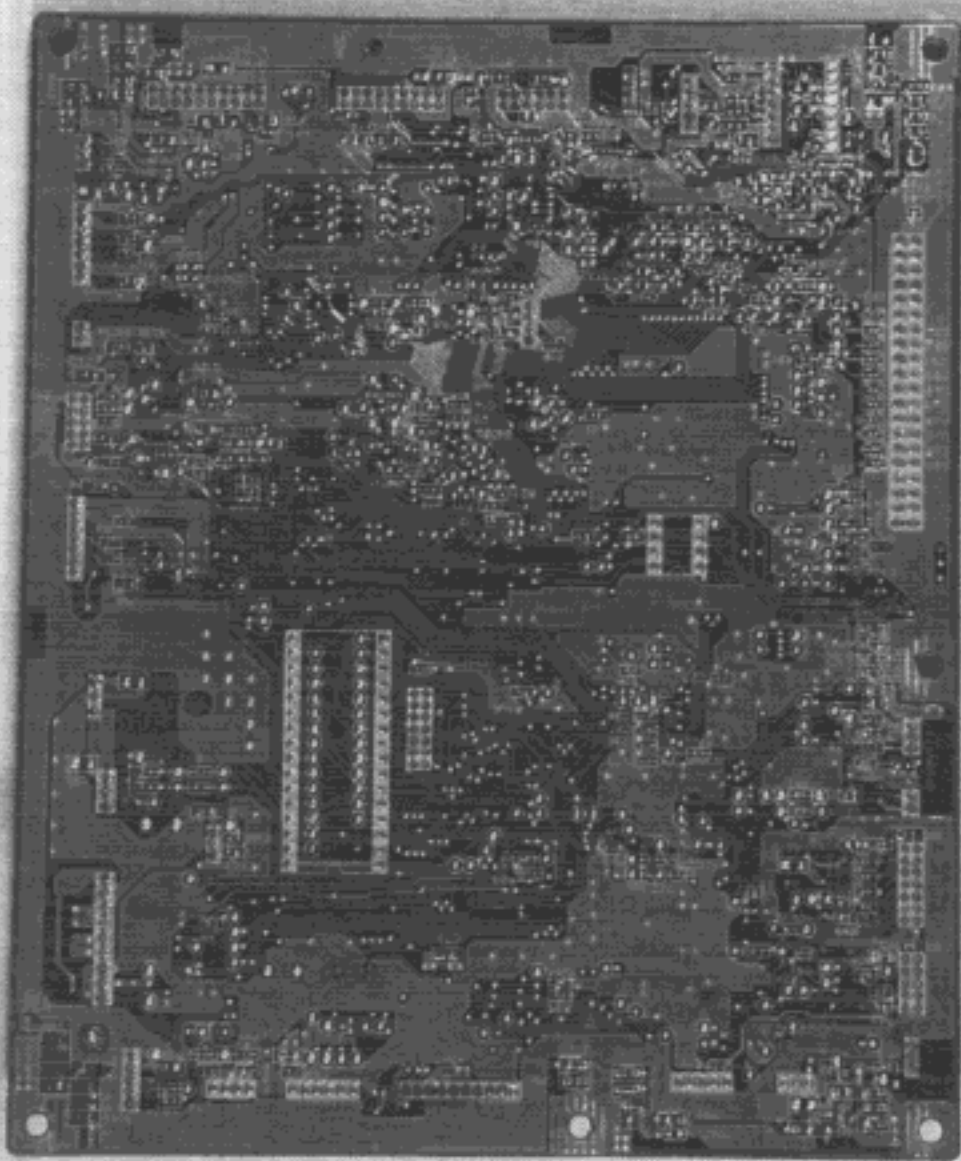
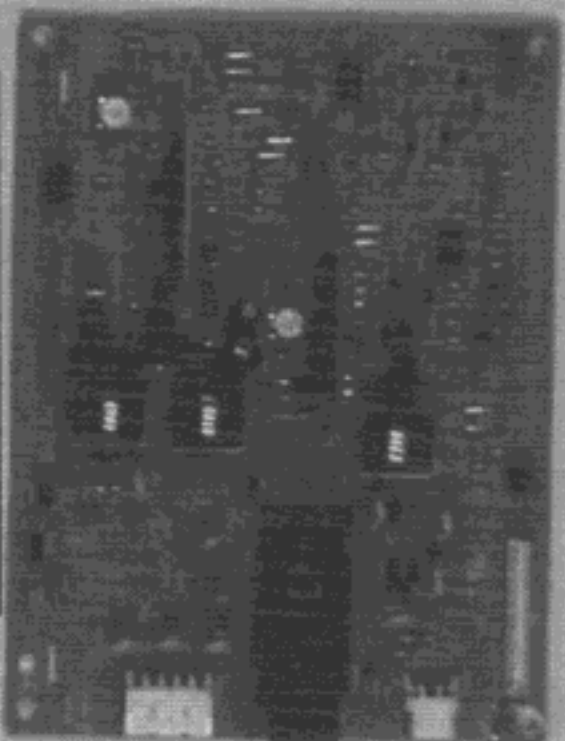


Photo 14

Bottom view of Printer Engine Control Board.

EXHIBIT #1-14  
Fly Control No.: KM6-98-F004  
FCC ID : ACJ526KX-P58101

Switching Frequency:  
0.100-0.166MHz



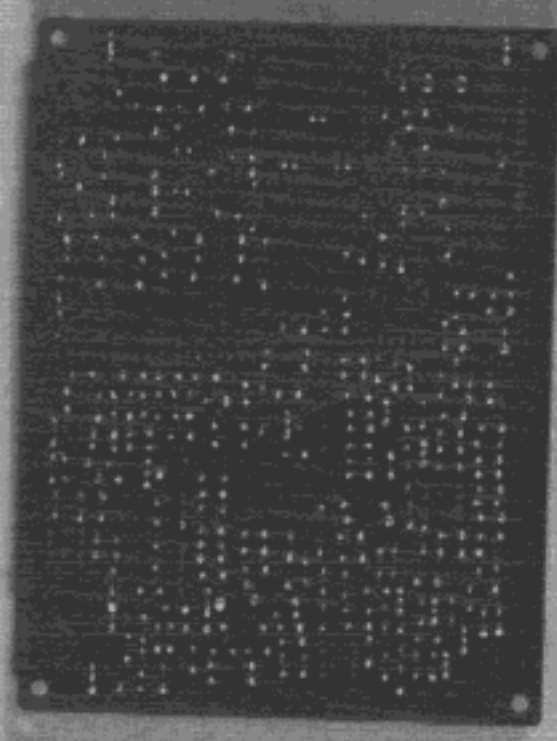
High Voltage Power Supply Unit



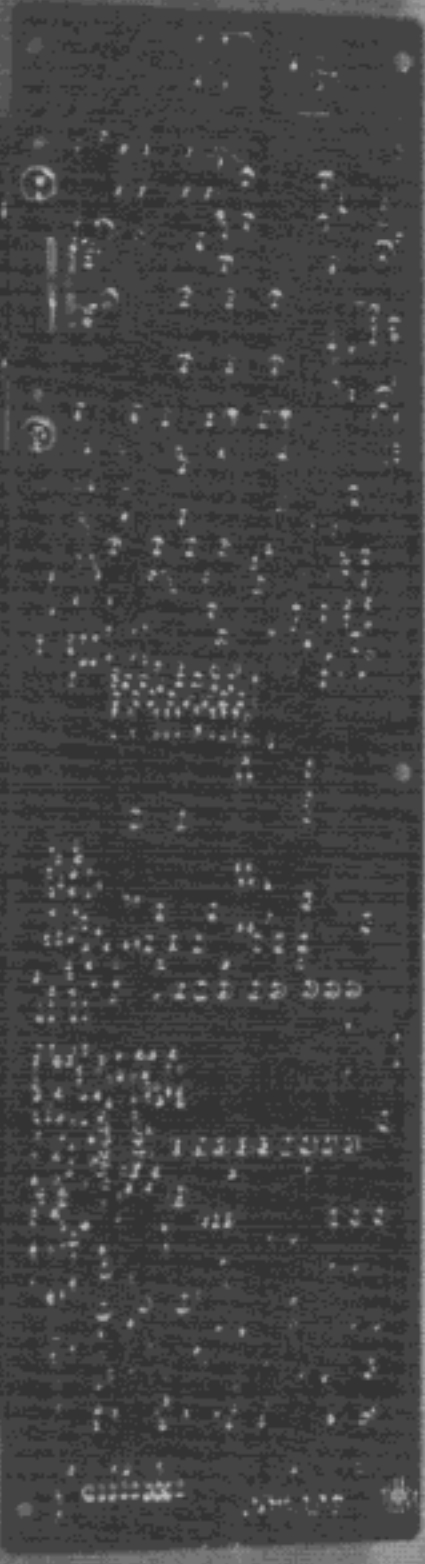
Power Supply Unit

Photo 15 Top view of Printer Power Supply Unit and High Voltage Power Supply Unit.

EXHIBIT #1-15  
Fty Control No.: KM6-98-F004  
FCC ID : ACJ526KX-PS8101



High Voltage Power Supply Unit

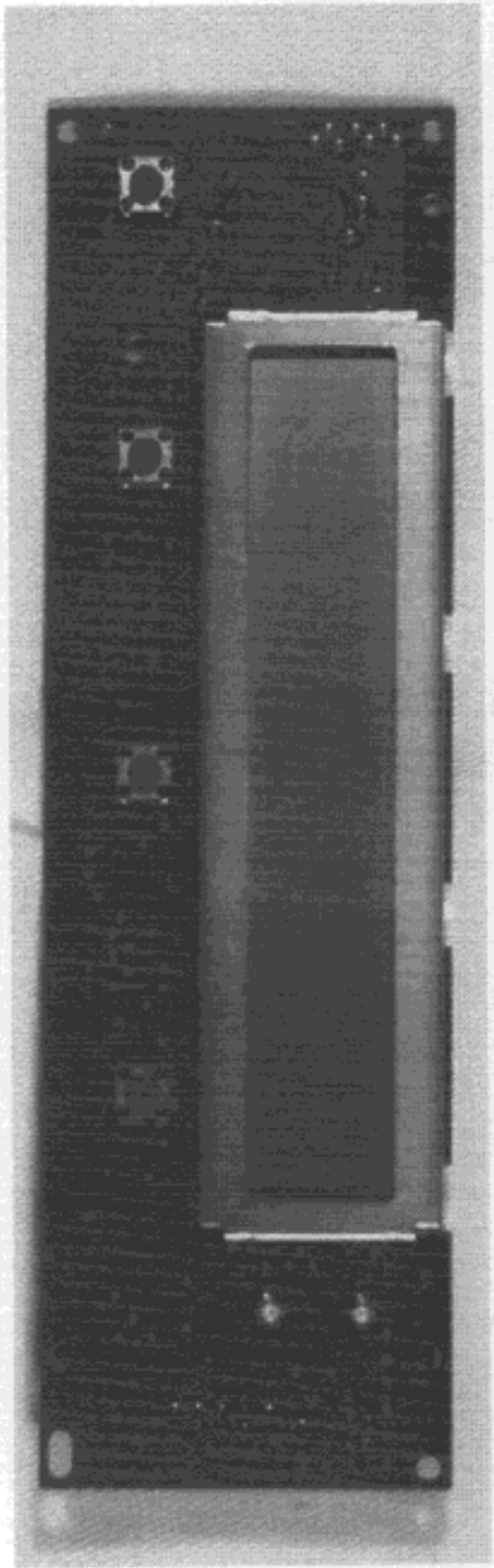


Power Supply Unit

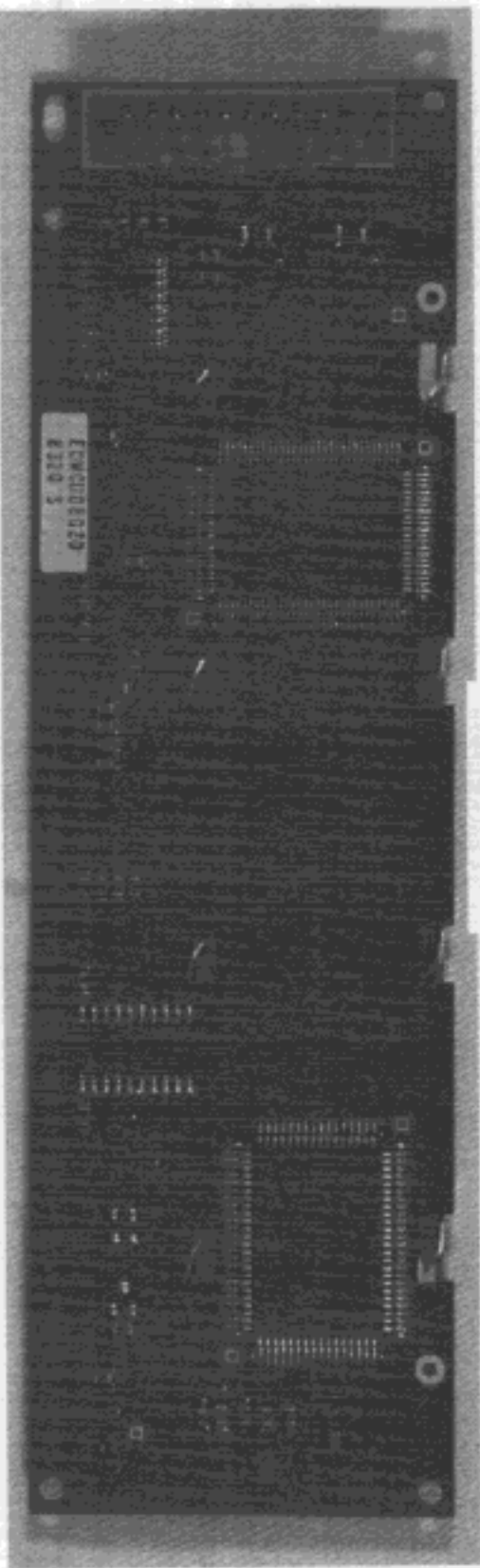
Photo 16

Bottom view of Printer Power Supply Unit and High Voltage Power Supply Unit.

EXHIBIT #1-16  
Fly Control No. KM6-98-F004  
FCC ID : ACJ5Z6KX-PS8101



**Top view**

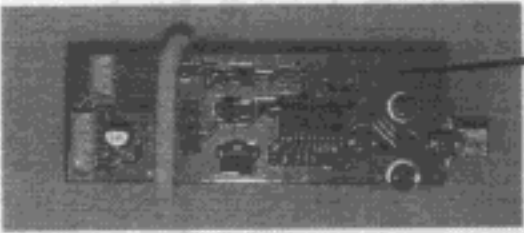


**Bottom view**

**Photo 17 Top and Bottom view of Printer Front Panel Board.**

EXHIBIT #1-17  
Fty Control No: KM6-98-F004  
FCG ID : ACJ526KX-PS8101

Parts side of Laser  
Driver Board



Laser Driver Board

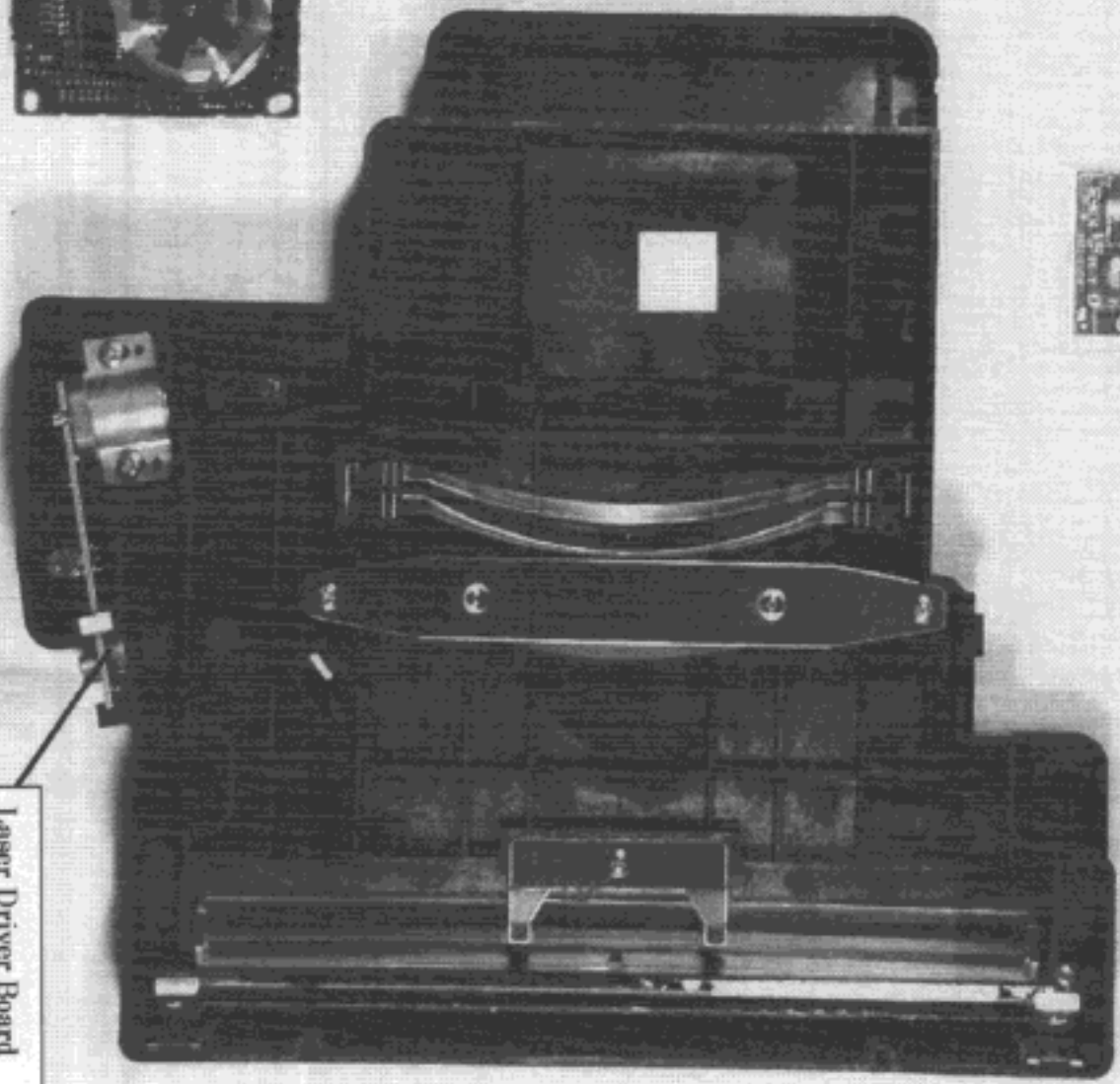


Photo 18 Top Inside view of ISU and Circuit Board on ISU.

EXHIBIT #1-18  
Fly Control No.: KM6-98-F004  
FCC ID : ACJ5Z6KX-PS8101

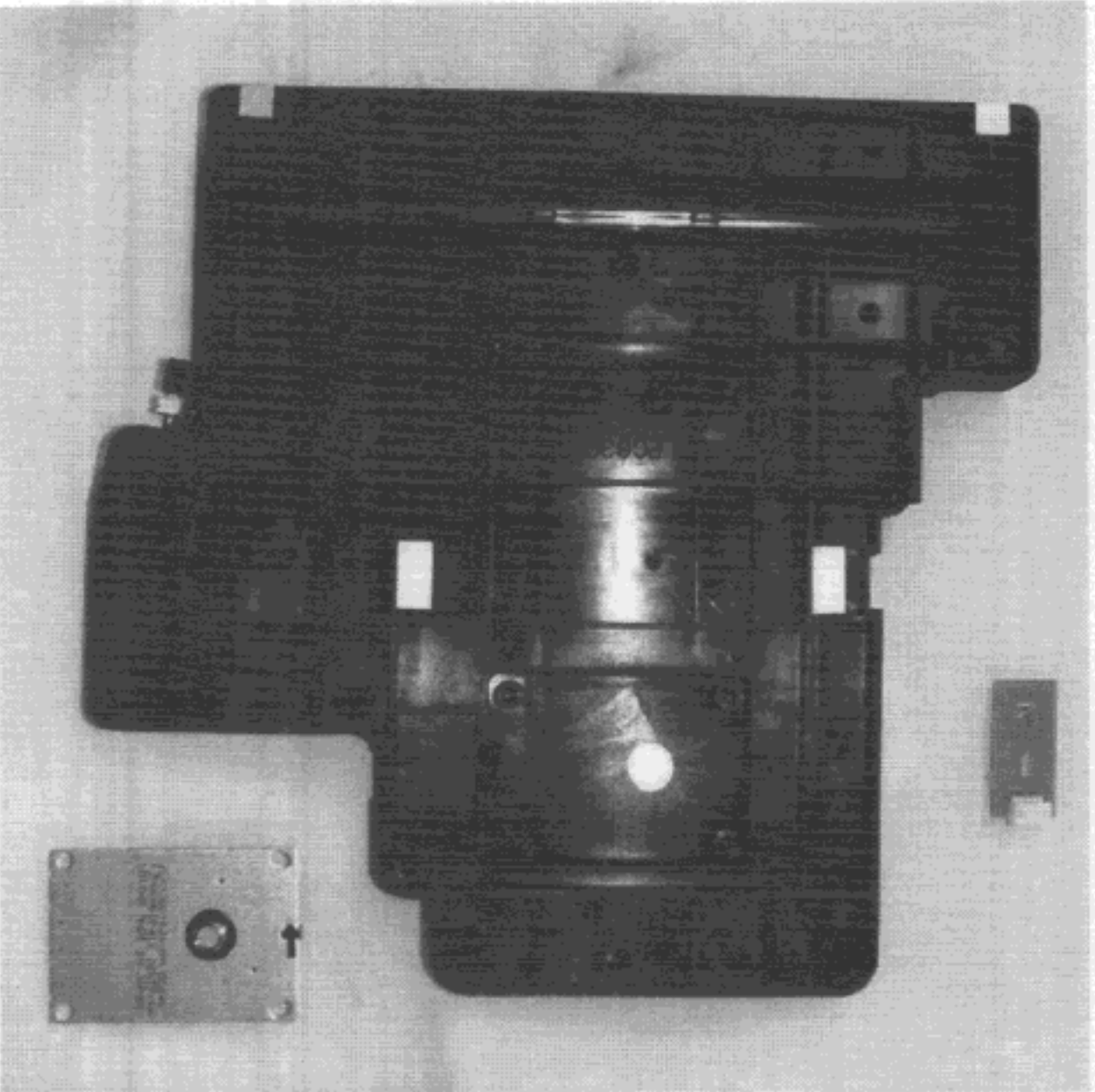
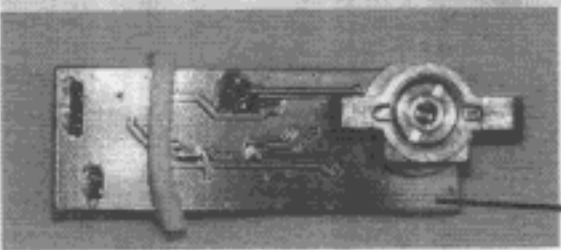


Photo 19

Bottom Inside view of ISU and Circuit Board on ISU.



Pattern side of Laser Driver Board

EXHIBIT #1-19  
Fty Control No.: KM6-98-F004  
FCC ID : ACJ526KX-PS8101

Ceramic OSC  
0.547MHz

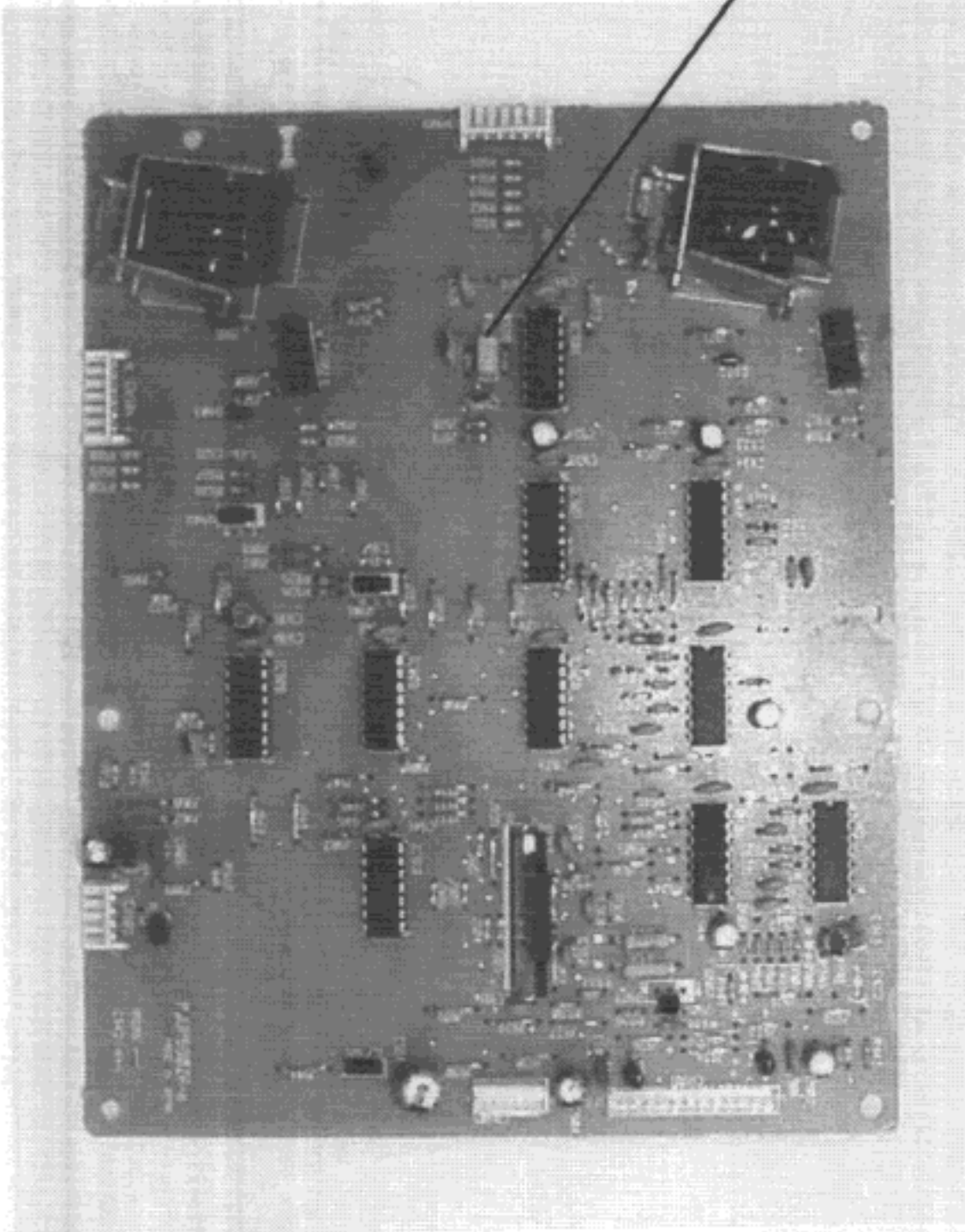


Photo 20 Top view of 2nd Cassette Feeder Board.

EXHIBIT #1-20

Fty Control No.: KM6-98-F004

FCC ID : ACJ5Z6KX-PS8101

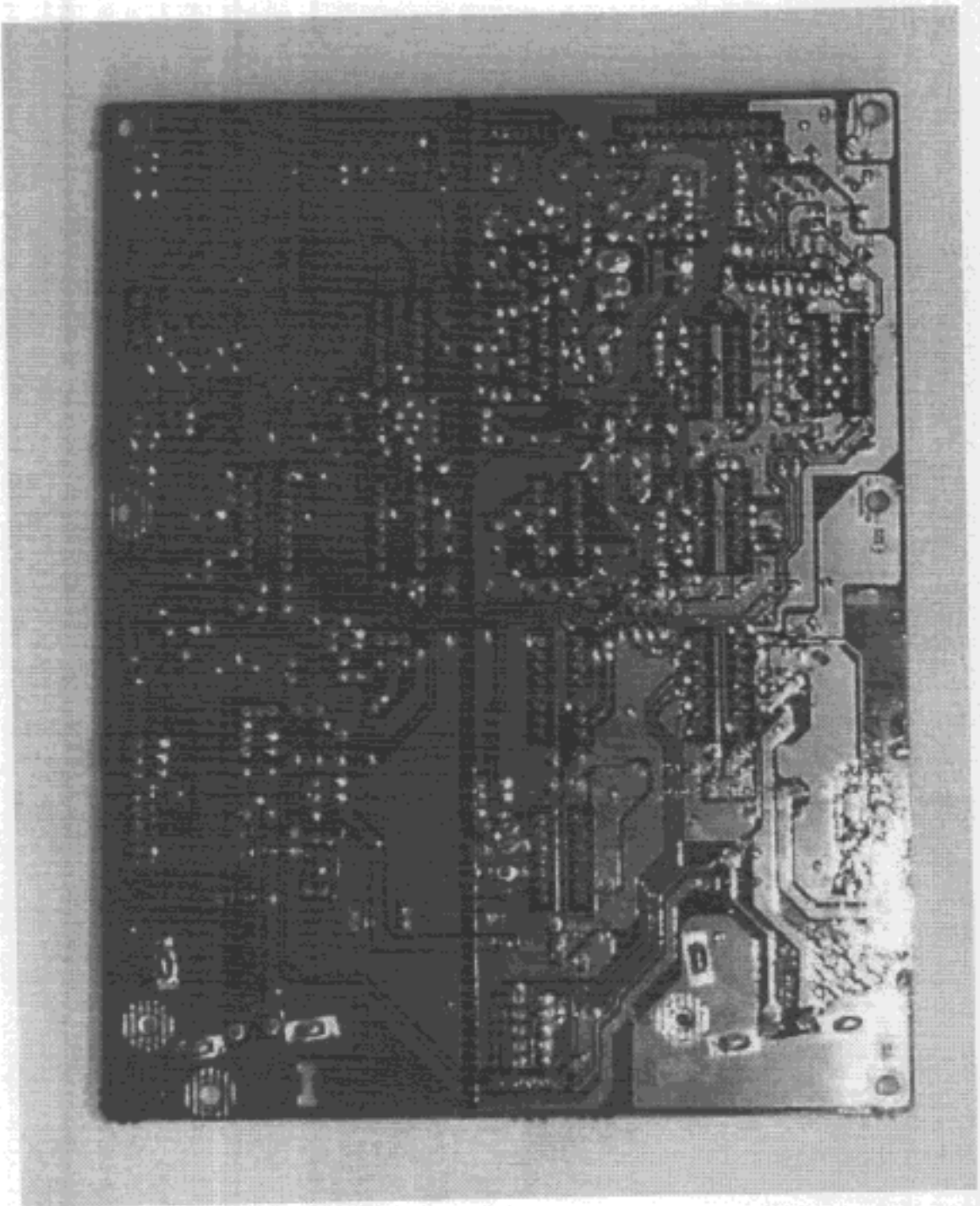


Photo 21 Bottom view of 2nd Cassette Feeder Board.

EXHIBIT #1-21  
Fly Control No.: KM6-98-F004  
FCC ID : ACJ5Z6KX-PS8101