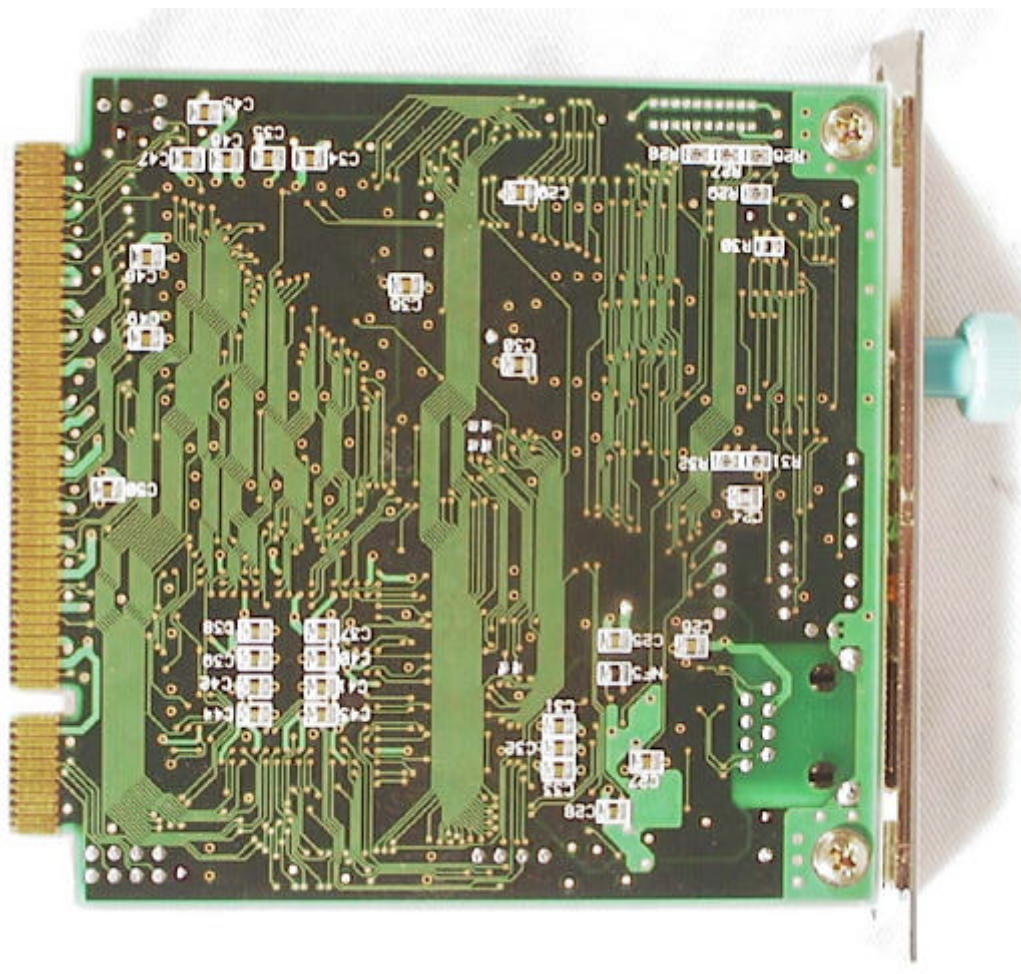
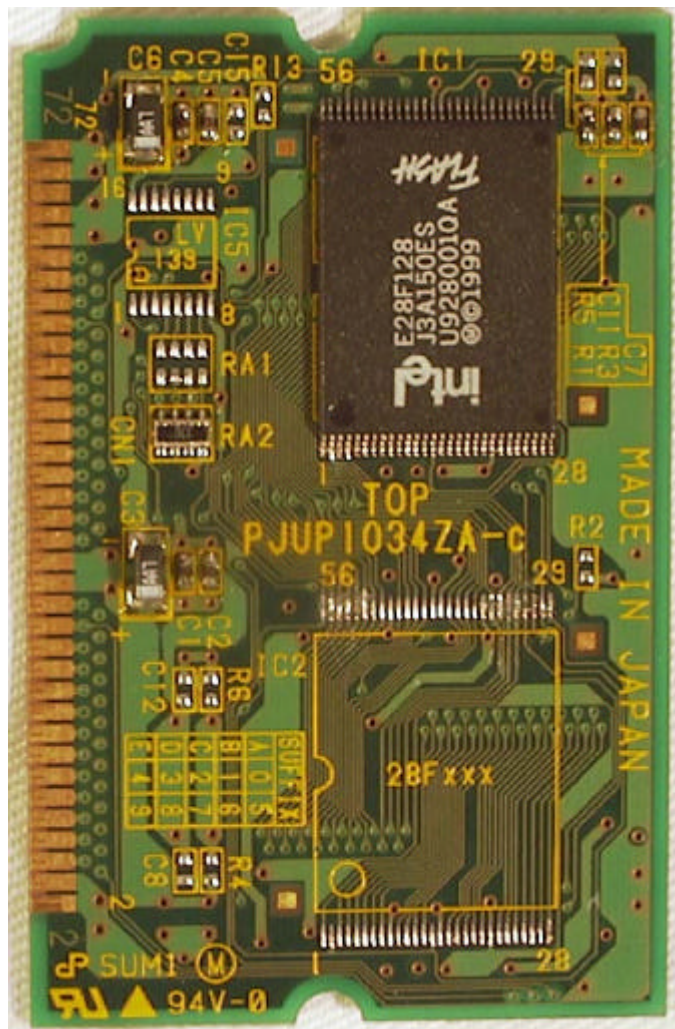


PCI Extension Board

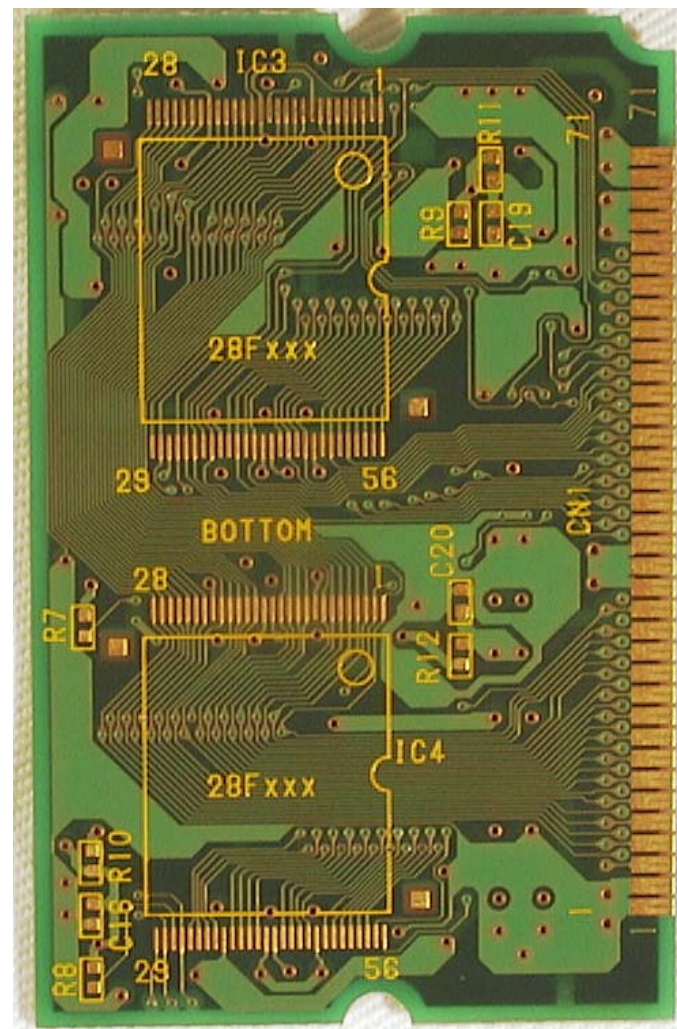


Network Card

Photo.10 Bottom view of option Network Card and PCI Extension Board

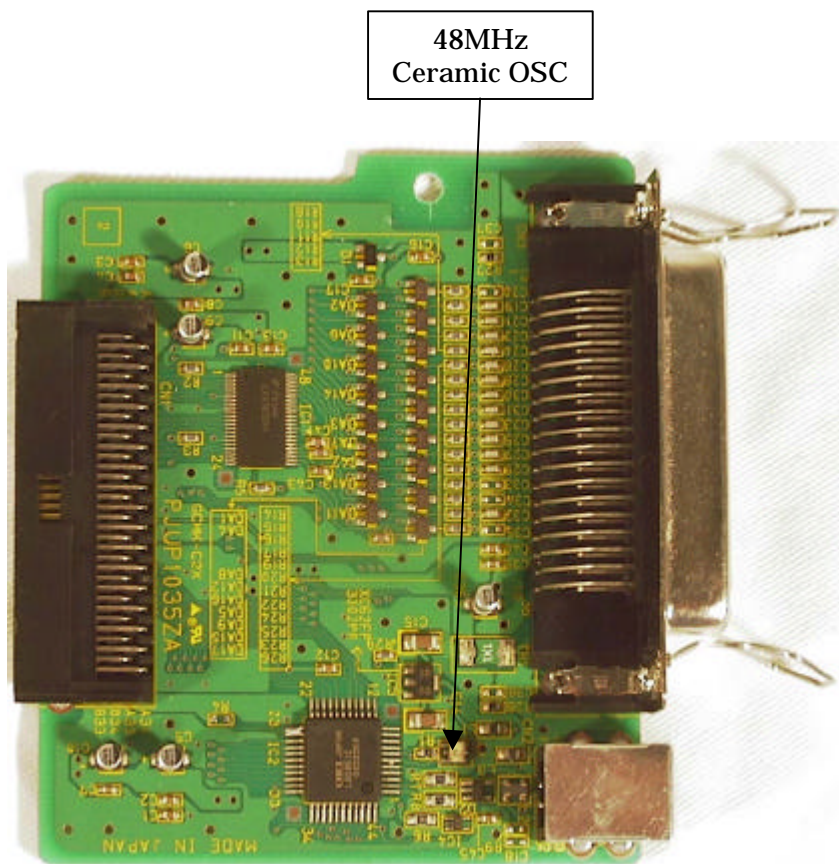


Top view

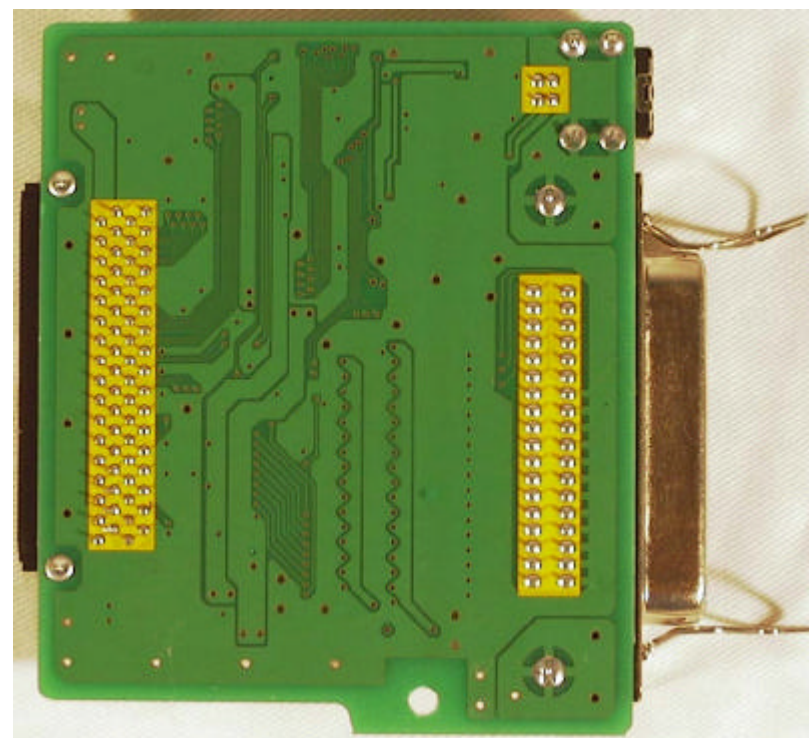


Bottom view

Photo.11 Top and Bottom view of ROM Board

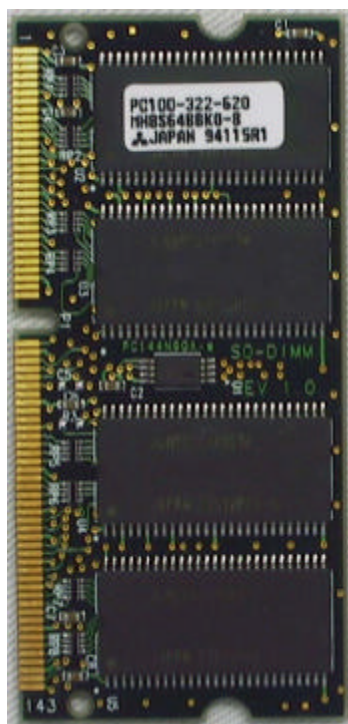


Top view



Bottom view

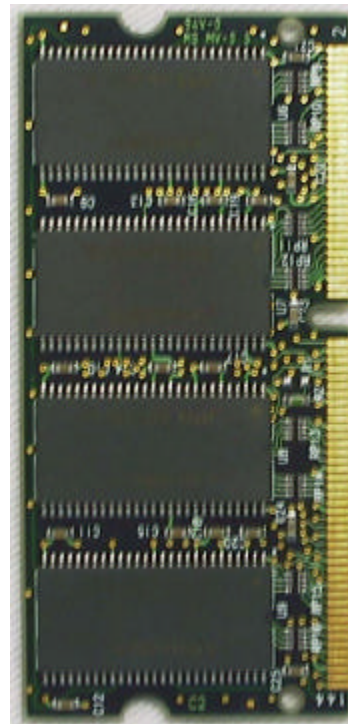
Photo.12 Top and Bottom view of P1284 & USB Interface Board



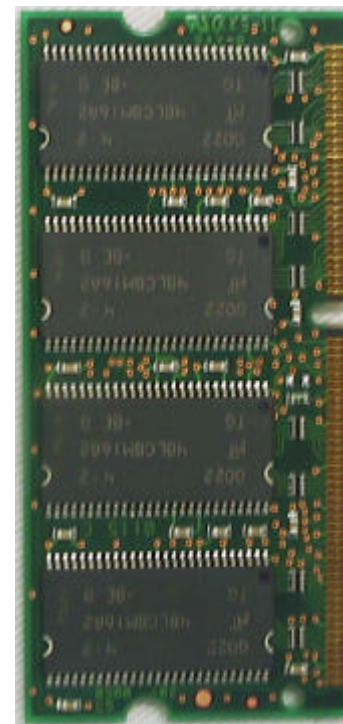
64M Byte (Top view)



128M Byte (Top view)



64M Byte (Bottom view)



128M Byte (Bottom view)

Photo.13 Top and Bottom view of option DIMM (64M Byte, 128M Byte)

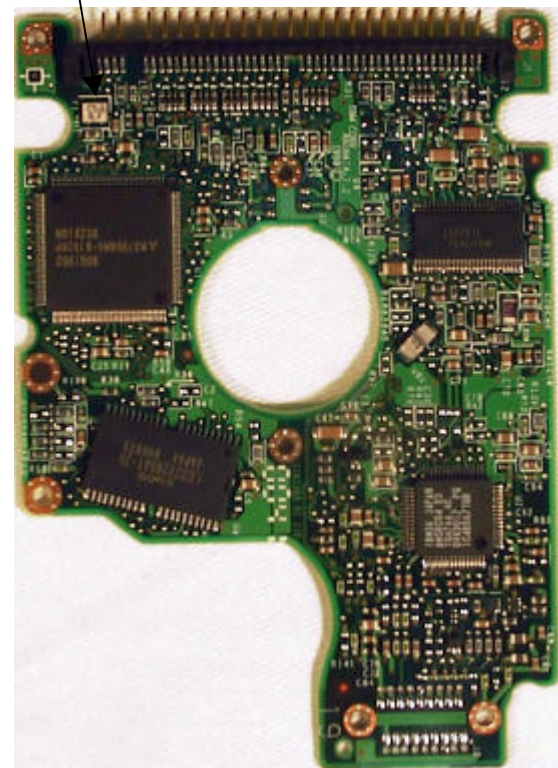


Top view



Bottom view

25.00MHz
Ceramic OSC



Print Wiring Board

Photo.14 Top and Bottom view of option HDD and Print Wiring Board