

PHOTOGRAPHS

- Photo.1. Overall front view of the EUT
- Photo.2. Overall rear view of the EUT
- Photo.3. Rear inside view of the EUT with Rear Cabinet and Engine Board Cover removed
- Photo.4. Left side inside view of the EUT with Left Cover and Main Control Cover removed
- Photo.5. Top view of Main Control Board with Frame, ROM Board, option Network Card, option DIMM, and option HDD added
- Photo.6. Top view of Main Control Board with P1284 & USB Interface Board and PCI Extension Board
- Photo.7. Top view of Main Control Board
- Photo.8. Bottom view of Main Control Board
- Photo.9. Top view of option Network Card and PCI Extension Board
- Photo.10. Bottom view of option Network Card and PCI Extension Board
- Photo.11. Top and Bottom view of ROM Board
- Photo.12. Top and Bottom view of P1284 & USB Interface Board
- Photo.13. Top and Bottom view of option DIMM (64M Byte, 128M Byte)
- Photo.14. Top and Bottom view of option HDD and Print Wiring Board
- Photo.15. Top view of Printer Engine Control Board
- Photo.16. Bottom view of Printer Engine Control Board
- Photo.17. Top view of Power Supply Board and High Voltage Power Supply Board
- Photo.18. Bottom view of Power Supply Board and High Voltage Power Supply Board
- Photo.19. Top and bottom view of Front Panel Board
- Photo.20. Top inside view of LSU and Circuit Board on LSU
- Photo.21. Bottom inside view of LSU and Circuit Board on LSU
- Photo.22. Top view of Second Cassette Feeder Board
- Photo.23. Bottom view of Second Cassette Feeder Board



Photo.1 Overall front view of the EUT



Photo.2 Overall rear view of the EUT



Photo.3 Rear inside view of the EUT with Rear Cabinet and Engine Board Cover removed

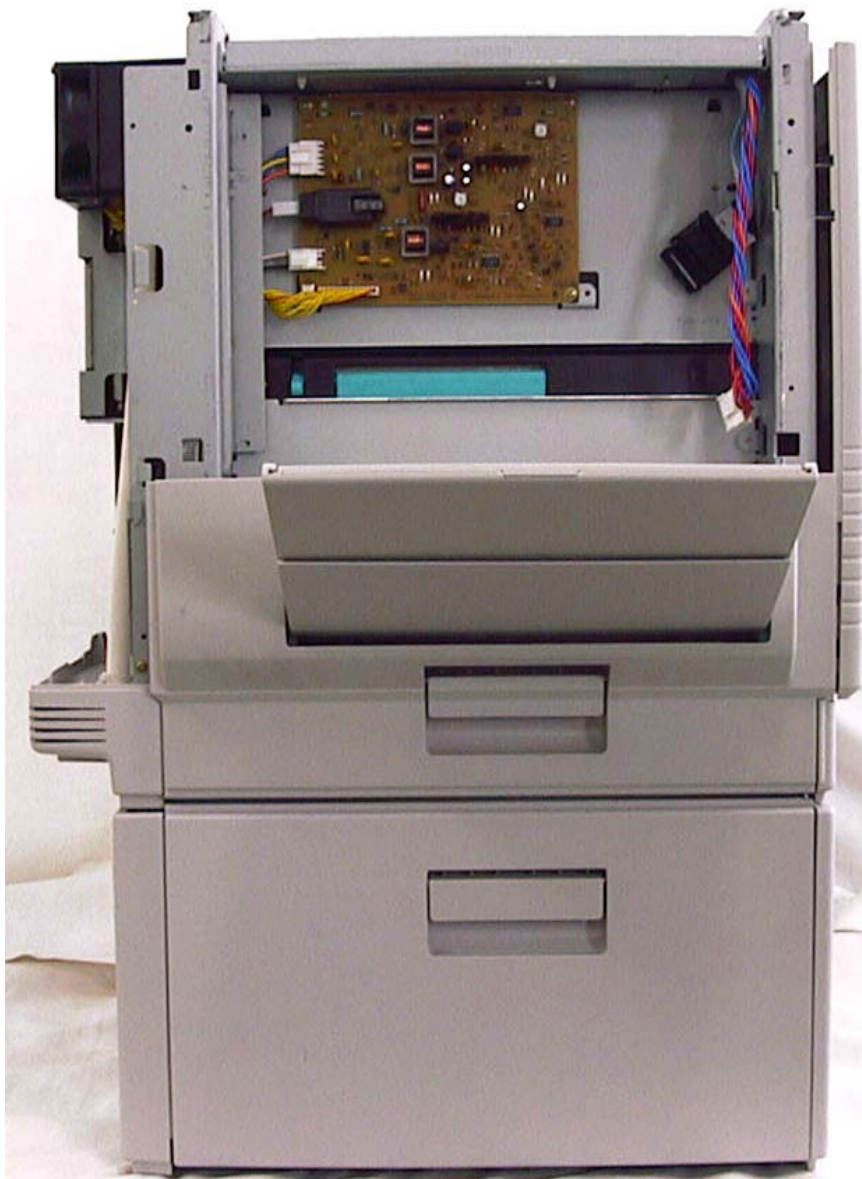


Photo.4 Left side inside view of the EUT with Left Cover and Main Control Cover removed

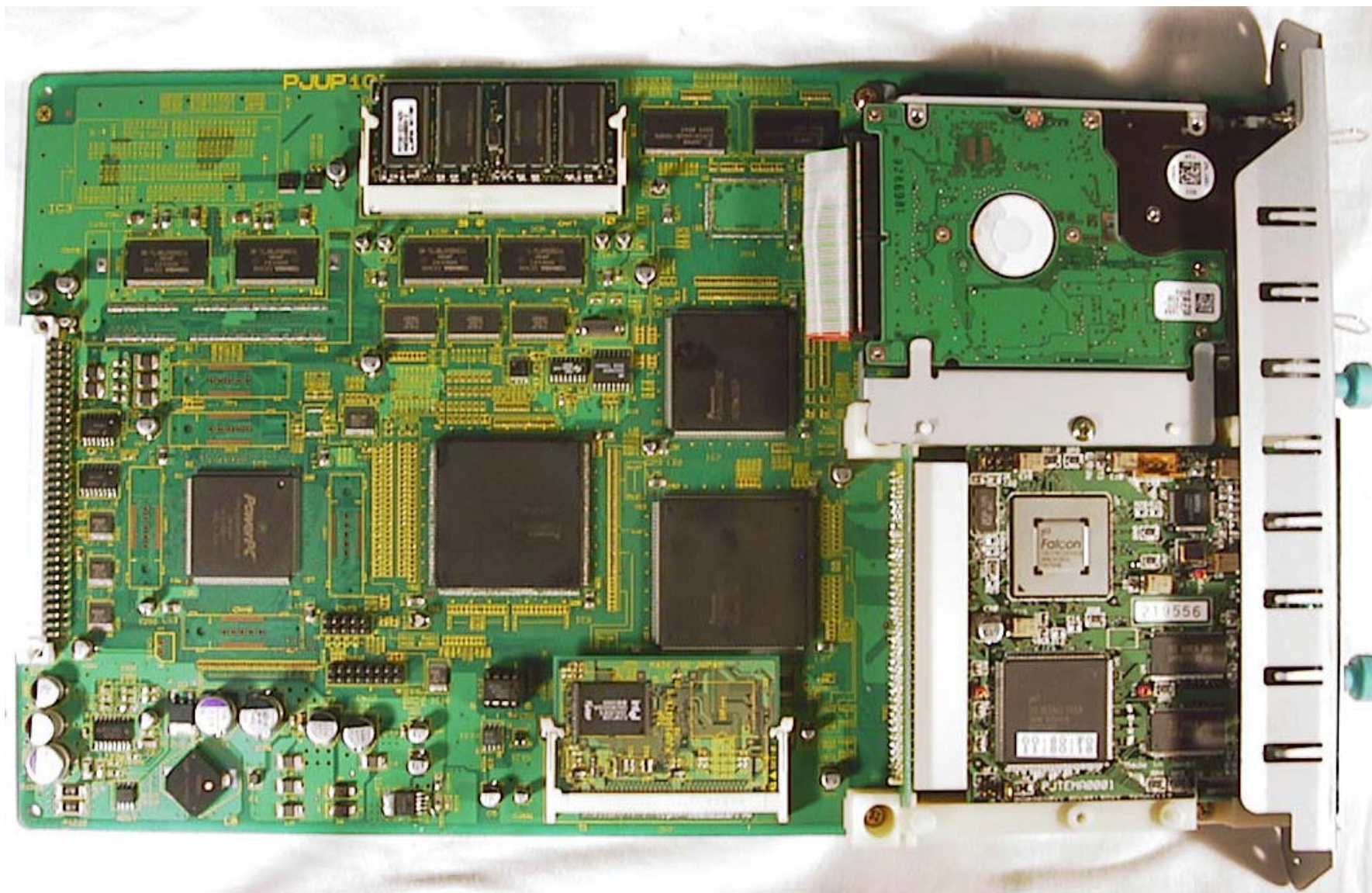


Photo.5 Top view of Main Control Board with Frame, ROM Board, option Network Card, option DIMM, and option HDD added