

MODEL : EFT23E28D  
EFT23E50D

Description of Self Ballasted Fluorescent Lamp

a. Ratings

MODEL	EFT23E28D	EFT23E50D
Input Voltage	120V a. c.	120V a. c.
Input Wattage	23 W	23 W
Oscillating frequency	60±10 kHz	60±10 kHz
RF power output	21 W	21 W
Luminous output	1450 lm	1380 lm
Color temperature	2800 K	5000 K

Notes : These lamps are provided with non-changeable discharge tube.

b. Block diagram

See Exhibit # 4-2

c. Circuit Diagram and parts list

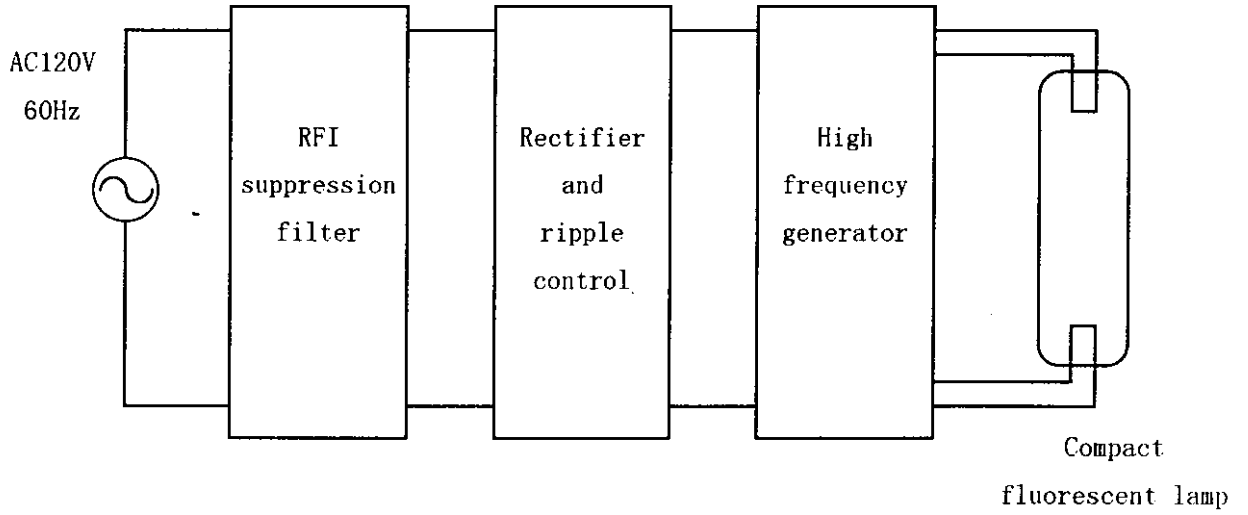
See Exhibit # 4-3

d. Description of circuit

High (RF) frequency generator, consists of switching power transistor Q1 and Q2 with base drive circuit, supplies RF power to the compact fluorescent lamp (inner discharge tube).

RFI Voltage is suppressed by RFI suppression filter consist of C1 and NF.

MODEL : EFT23E28D  
EFT23E50D

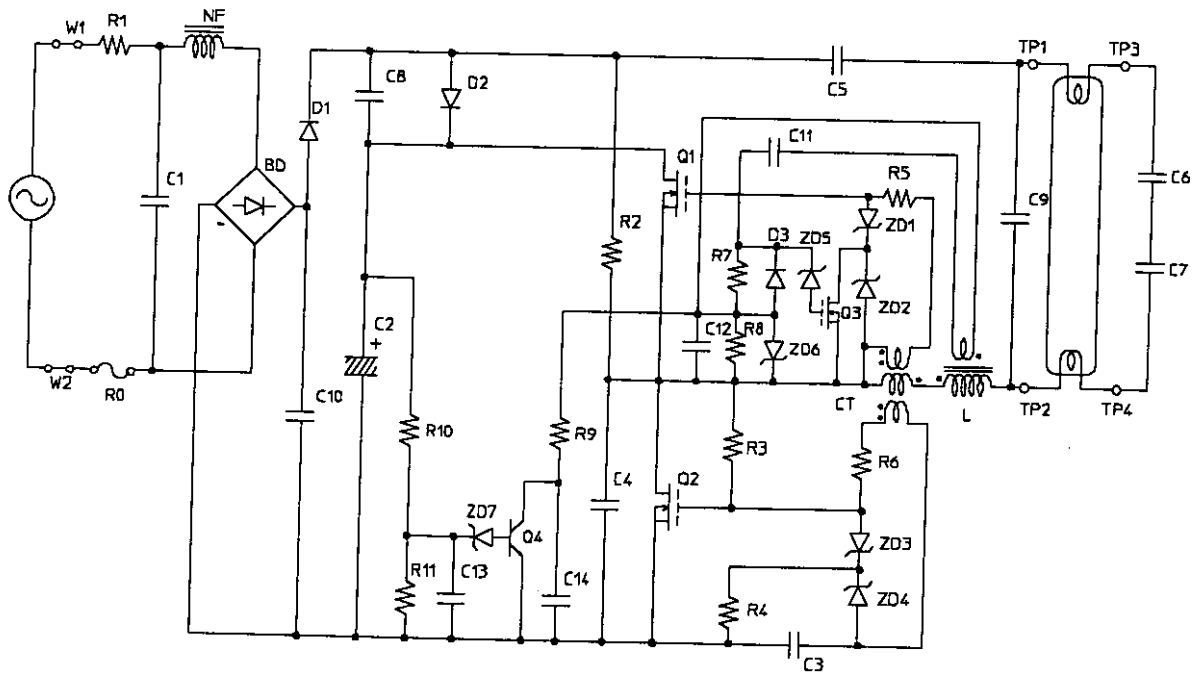


Block diagram

MODEL : EFT23E28D  
EFT23E50D

EXSIBIT #4-3

Circuit diagram and parts list



Resistor	R0	Capacitor	C1	Inductor	NF	
	R1		C2		L	
	R2		C3		CT	
	R3		C4		Diode	BD
	R4		C5			D1
	R5		C6			D2
	R6		C7			D3
	R7		C8			ZD1
	R8		C9			ZD2
	R9		C10			ZD3
	R10		C11		ZD4	
	R11		C12		ZD5	
Transistor	Q1	C13	ZD6			
	Q2	C14	ZD7			
	Q3					
	Q4					