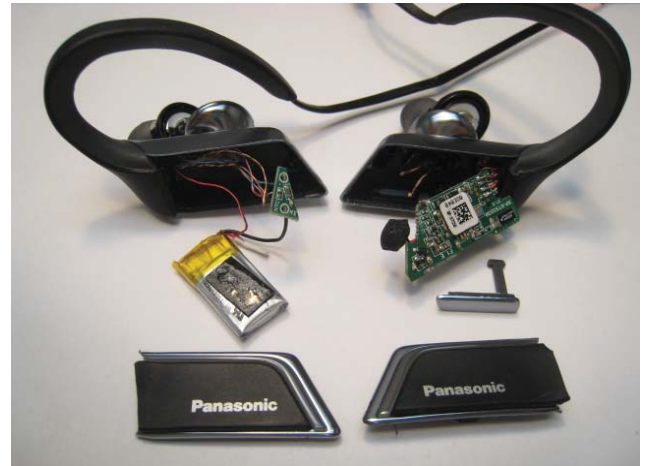


# RP-BTS50 Inner Photos

\*The PCB pattern was slightly changed from the original to take matching for a new antenna.



Left side (Battery and Thermistor board)



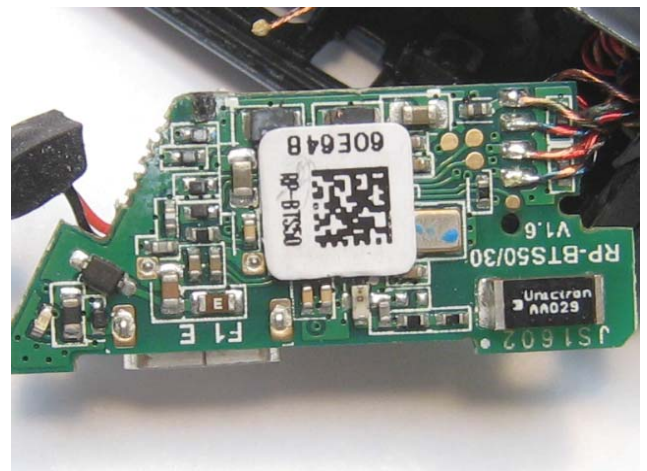
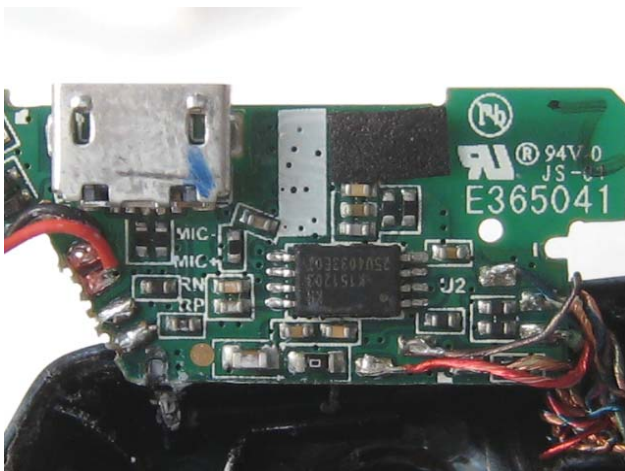
Right side



Right side board (Back)



Right side board (front)



# RP-BTS50 Inner Photos

Earphone Speaker



Right side board (front)



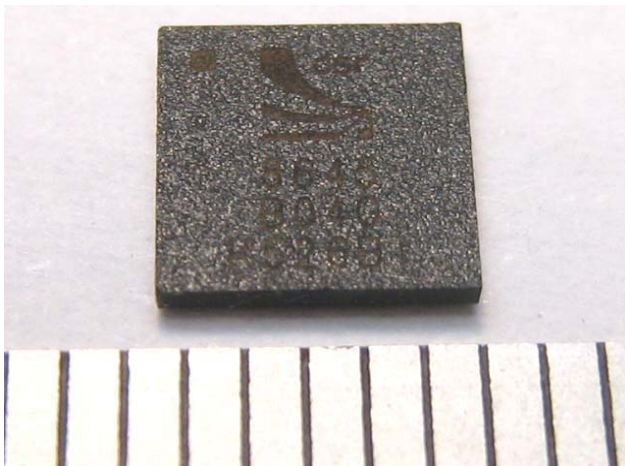
Battery



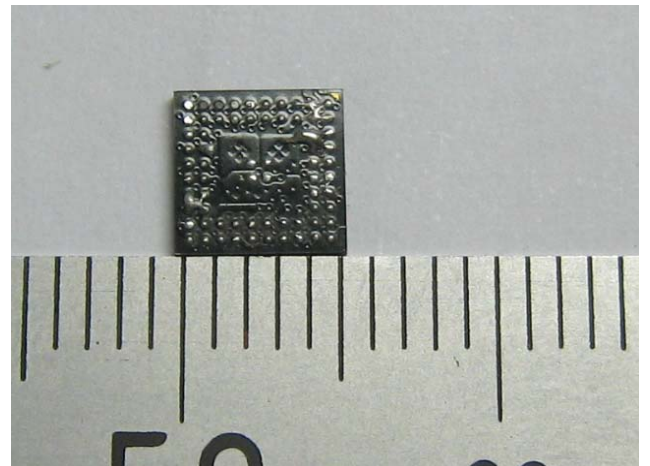
Battery



Bluetooth Module

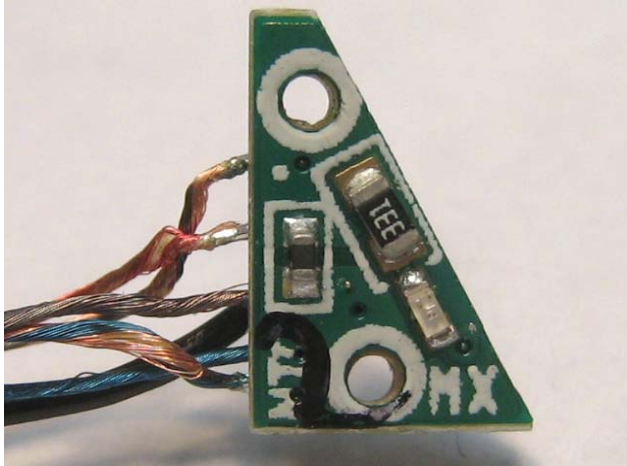


Bluetooth Module

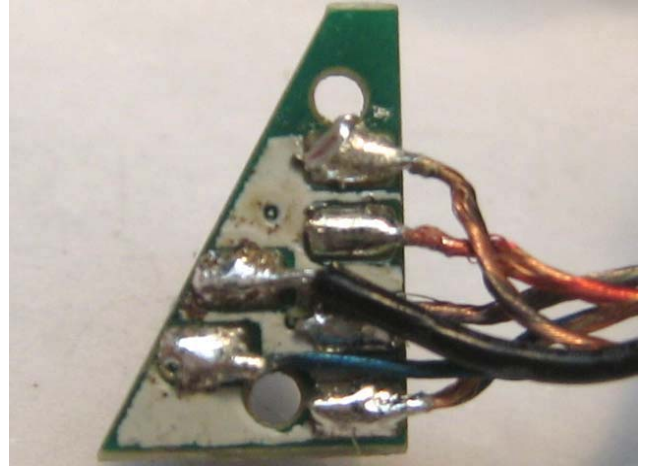


# RP-BTS50 Inner Photos

Thermistor board



Thermistor board



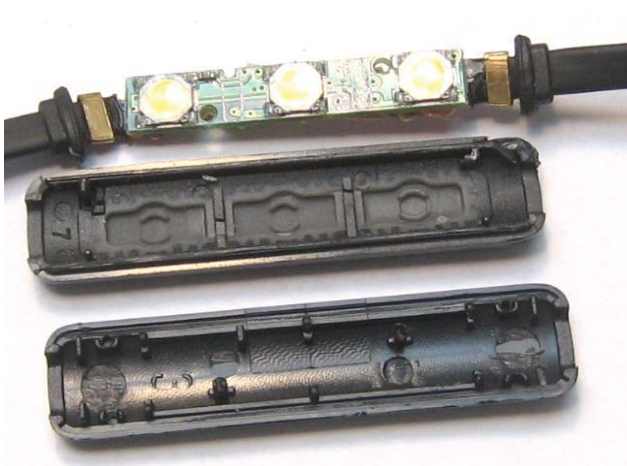
Controller



Controller



Controller



Controller

