

RP-BTS30 Inner Photos

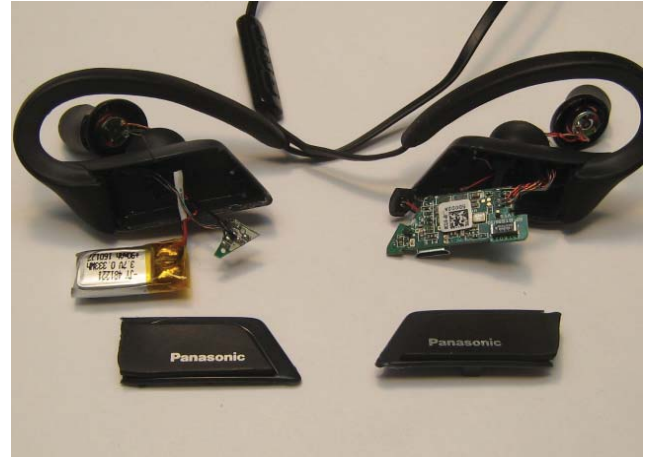
*The PCB pattern was slightly changed from the original to take matching for a new antenna.



Left side (Battery and Thermistor board)



Right side board (Back)



Right side



Antenna

Right side board (front)

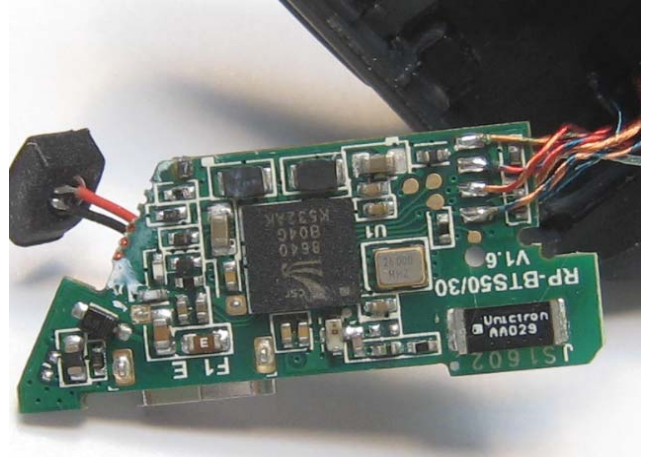


RP-BTS30 Inner Photos

Earphone Speaker



Right side board (front)



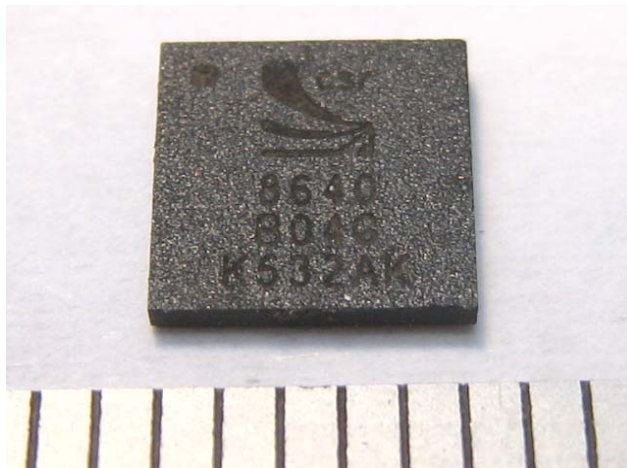
Battery



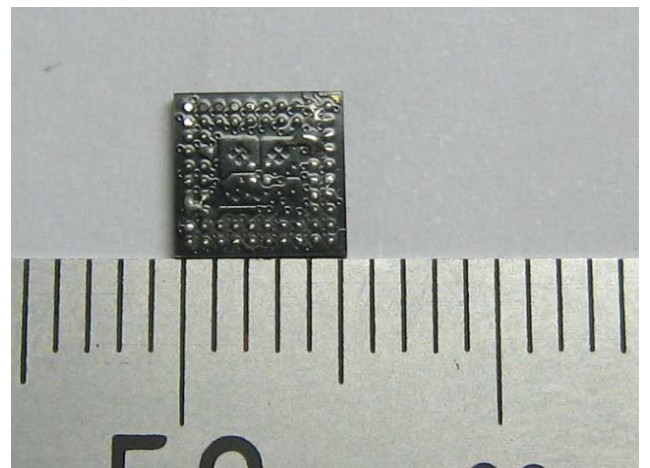
Battery



Bluetooth Module

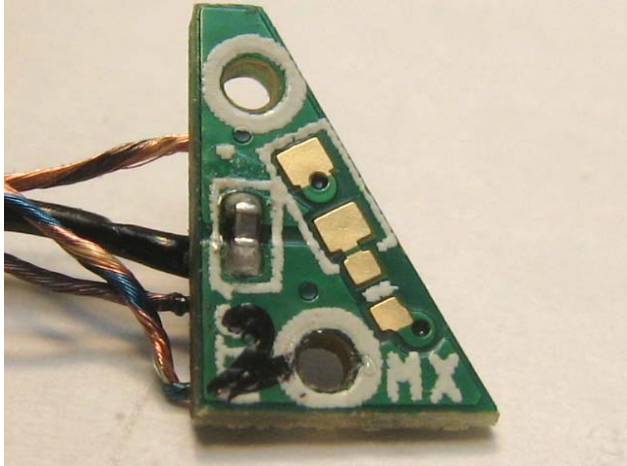


Bluetooth Module

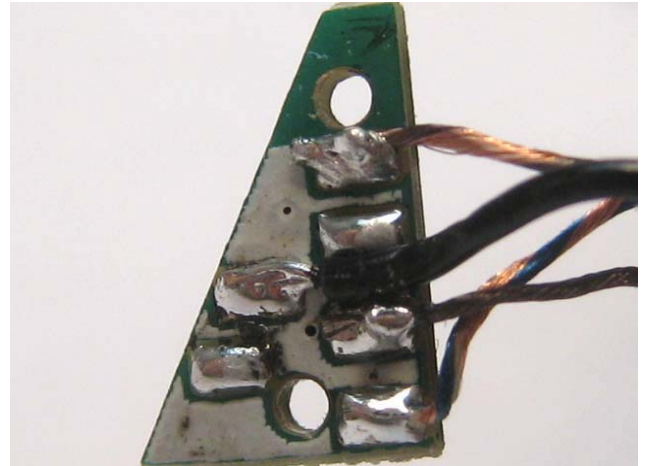


RP-BTS30 Inner Photos

Thermistor board



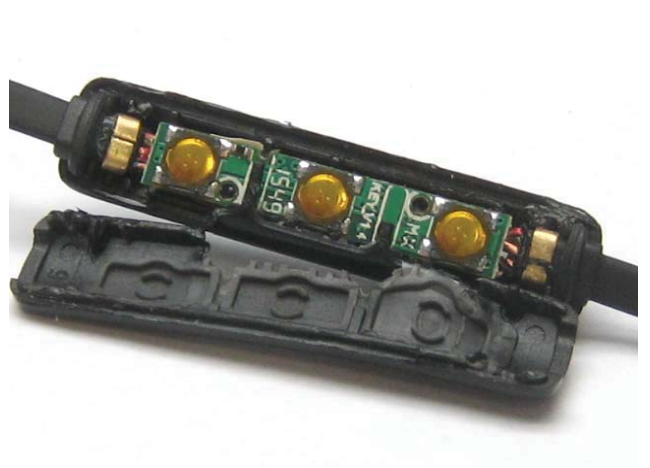
Thermistor board



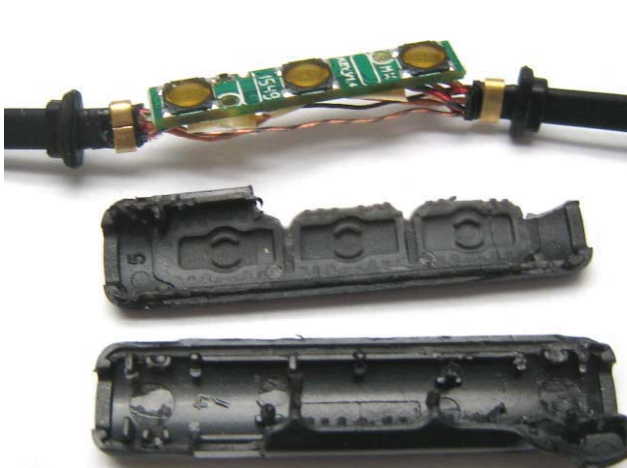
Controller



Controller



Controller



Controller

