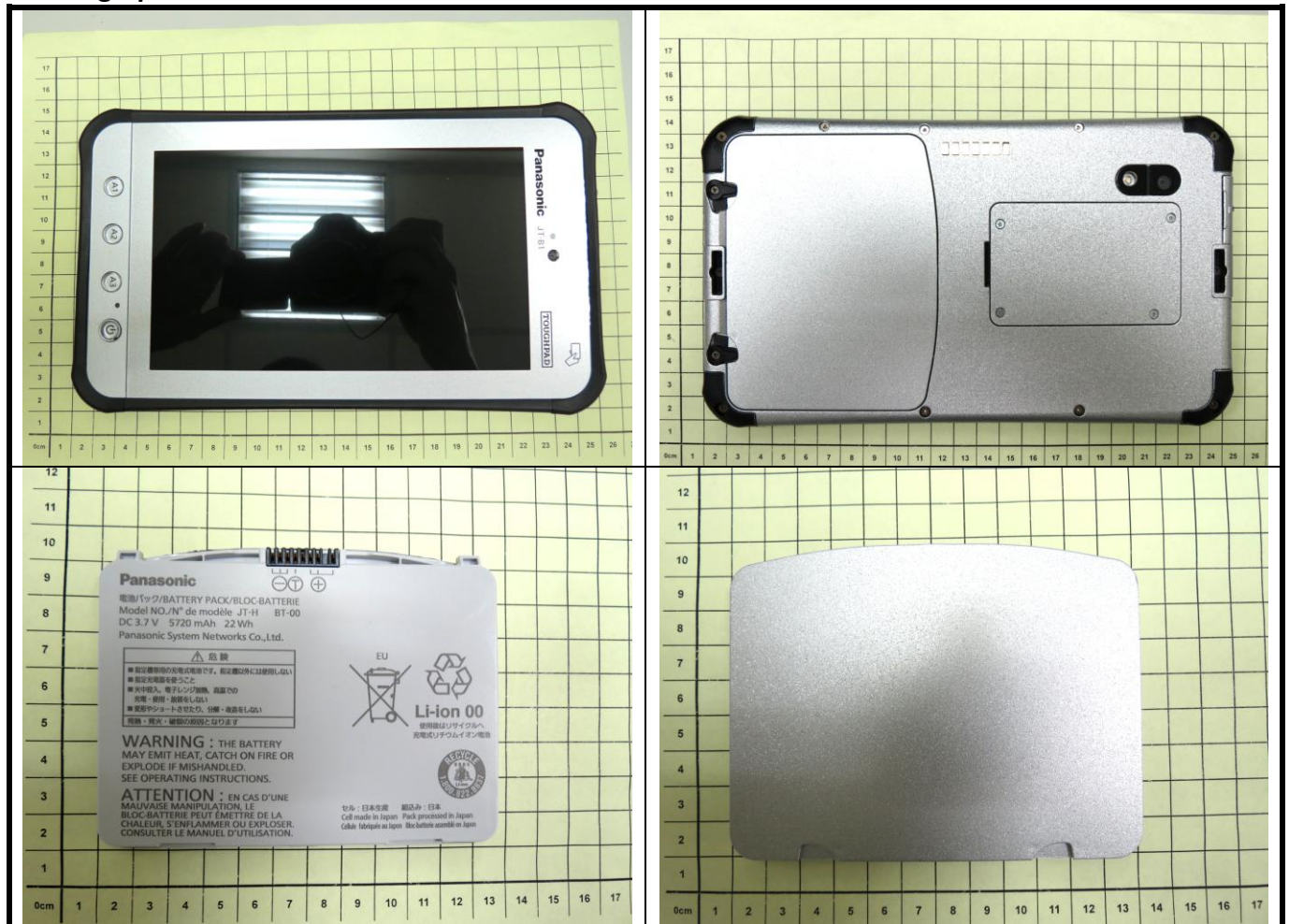




## **Appendix D. Photographs of EUT and Setup**

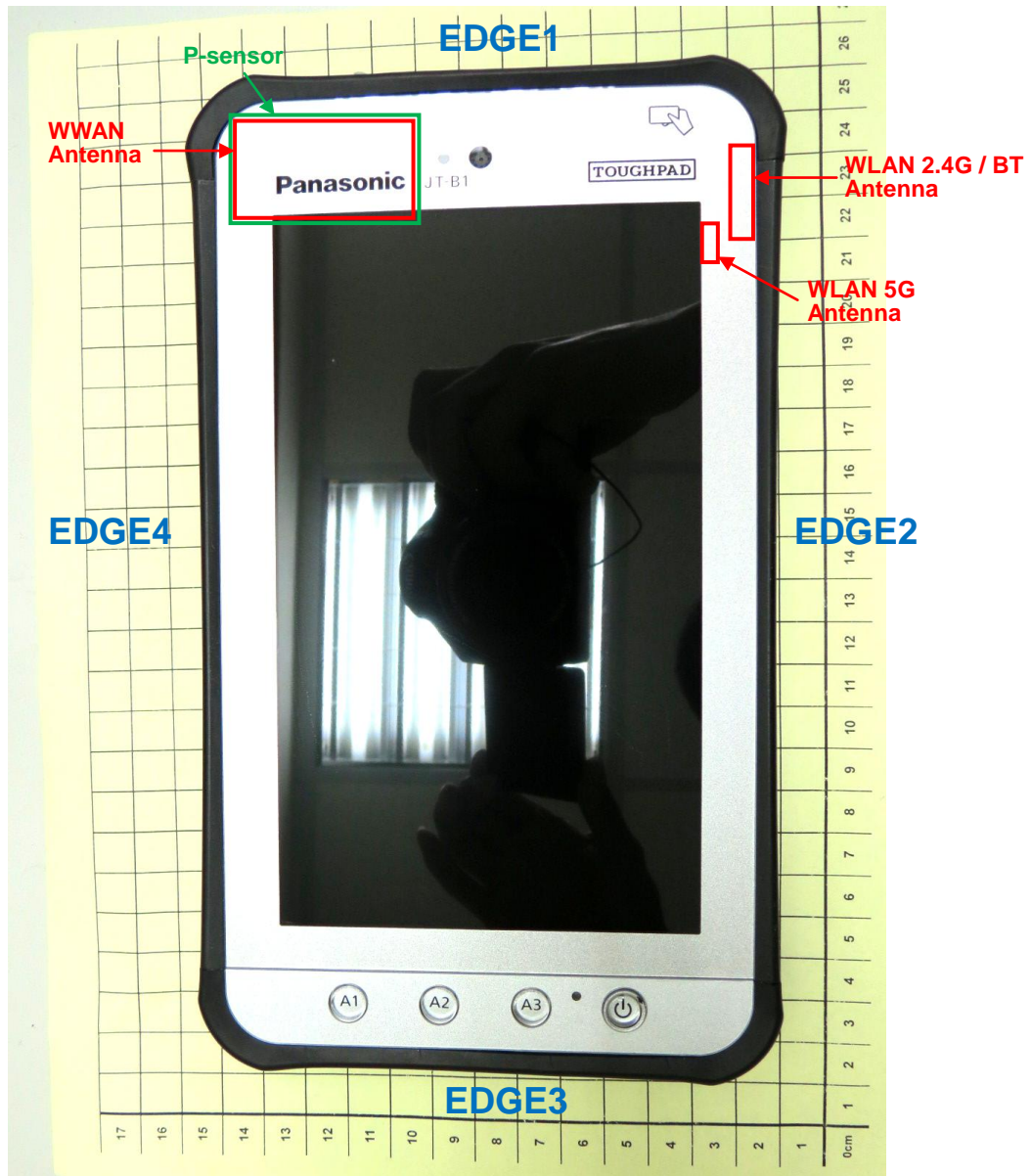
# FCC SAR Test Report

## <Photographs of EUT>



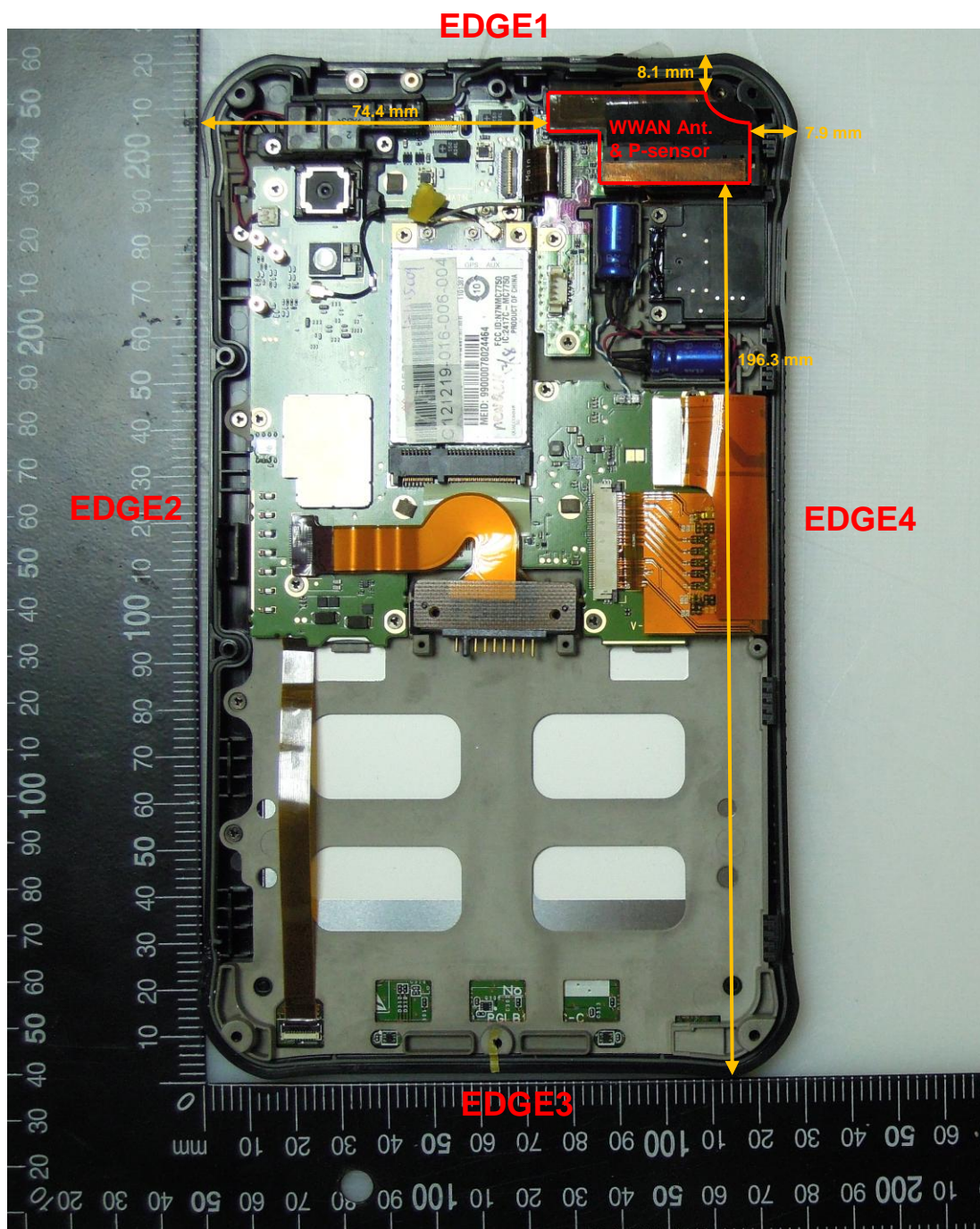
# FCC SAR Test Report

## <Location of Antennas, EUT Front View>



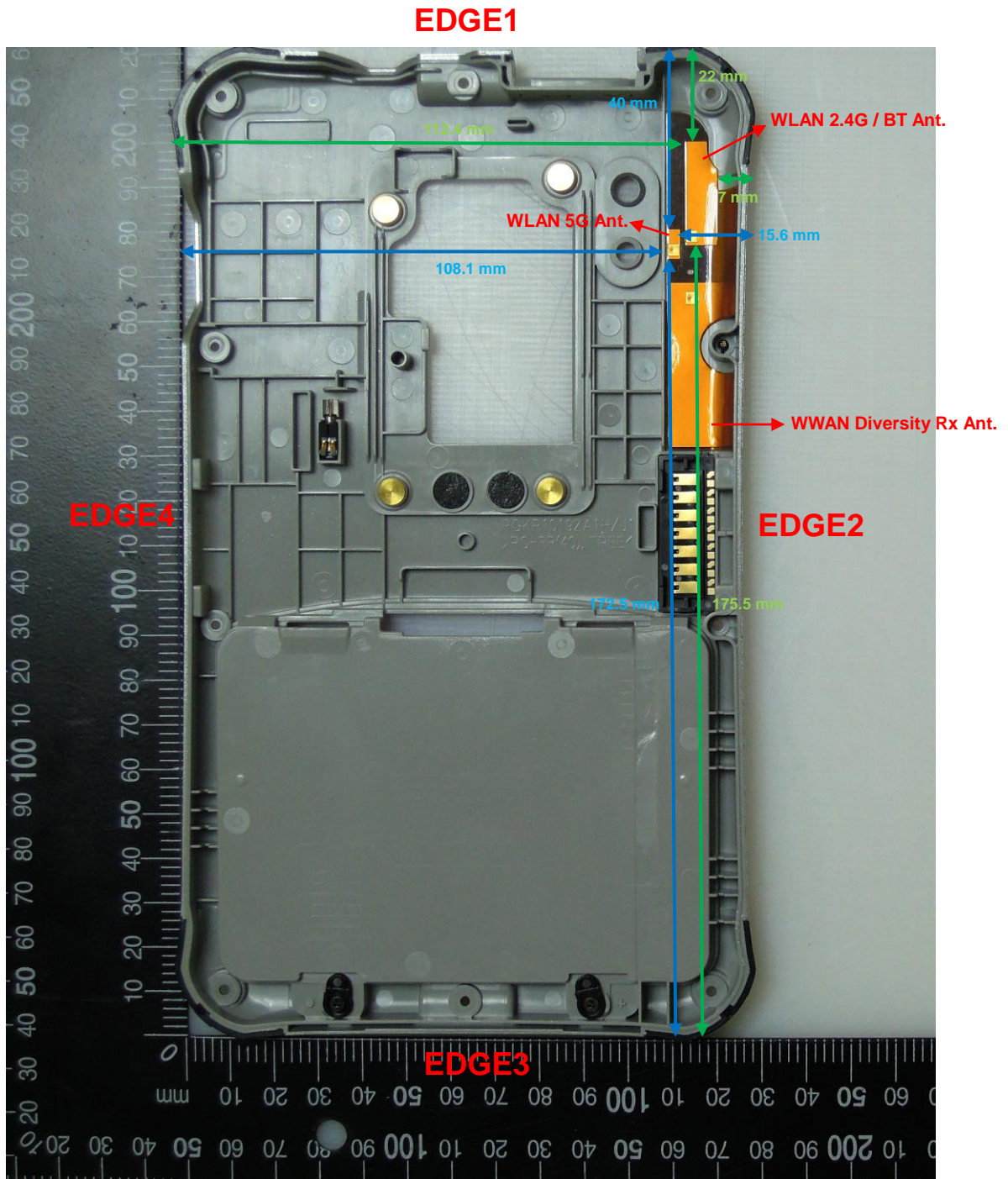
The separation distance for antenna to edge:

| Antenna        | To EDGE1 (mm) | To EDGE2 (mm) | To EDGE3 (mm) | To EDGE4 (mm) |
|----------------|---------------|---------------|---------------|---------------|
| WWAN           | 8.1           | 74.4          | 196.3         | 7.9           |
| WLAN 2.4G / BT | 22.0          | 7.0           | 175.5         | 112.4         |
| WLAN 5G        | 40.0          | 15.6          | 172.5         | 108.1         |



<EUT Rear View>

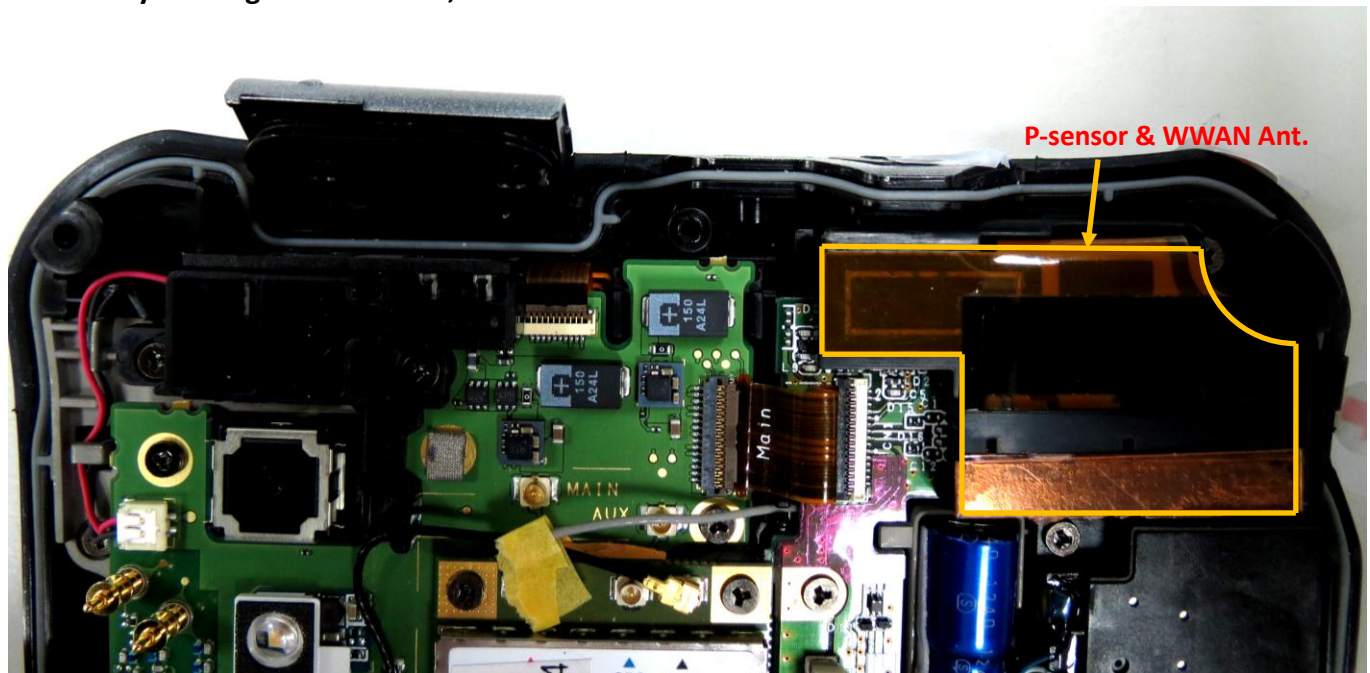
# FCC SAR Test Report



<EUT Front View>

## FCC SAR Test Report

### <Proximity Sensing Path Location, EUT Rear View>

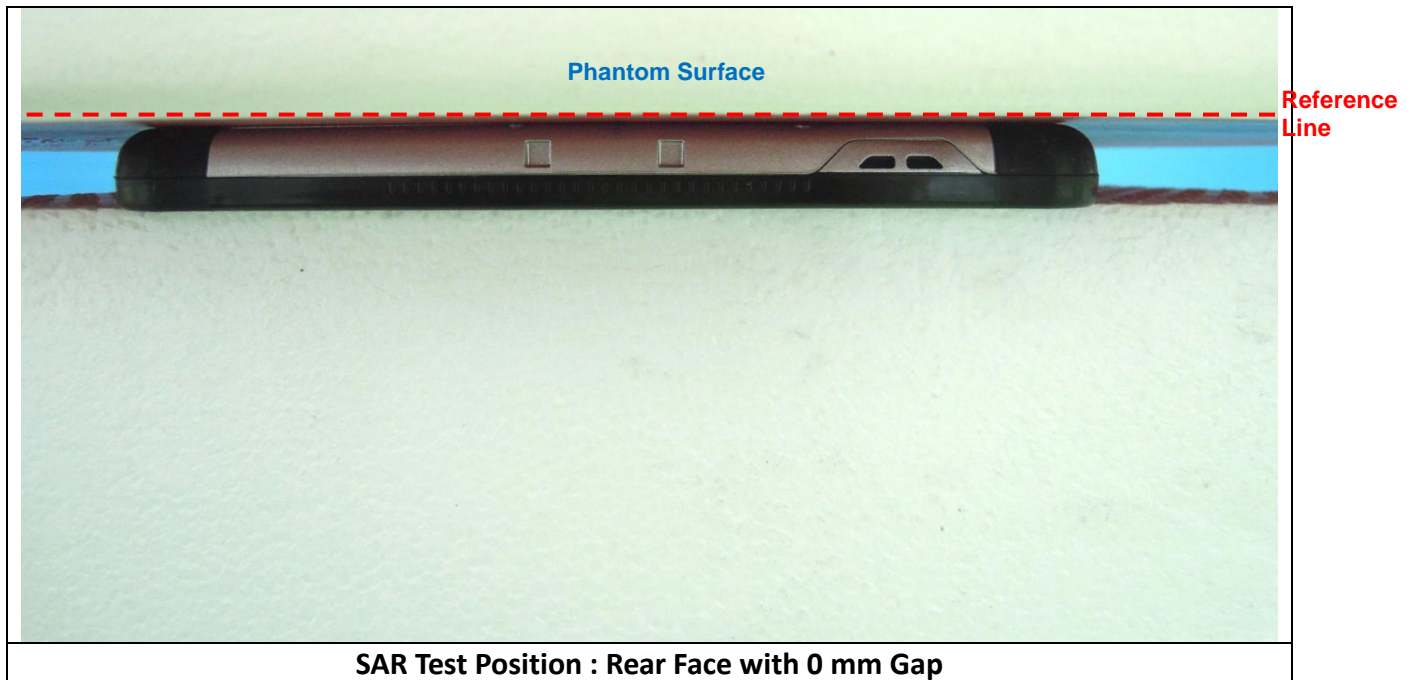


#### Note:

The proximity sensor is combined with the WWAN Tx antenna in a single FPC (Flexible Printed Circuit), and the P-sensor occupies the same area as the WWAN antenna. Since the technical document related to the design of proximity sensor and power reduction is confidential, the detail is described in the separate document, not in this SAR report, and please refers to the technical documents as “The Proximity Sensor Technical Description” and “PBA Document for Power Reduction”.

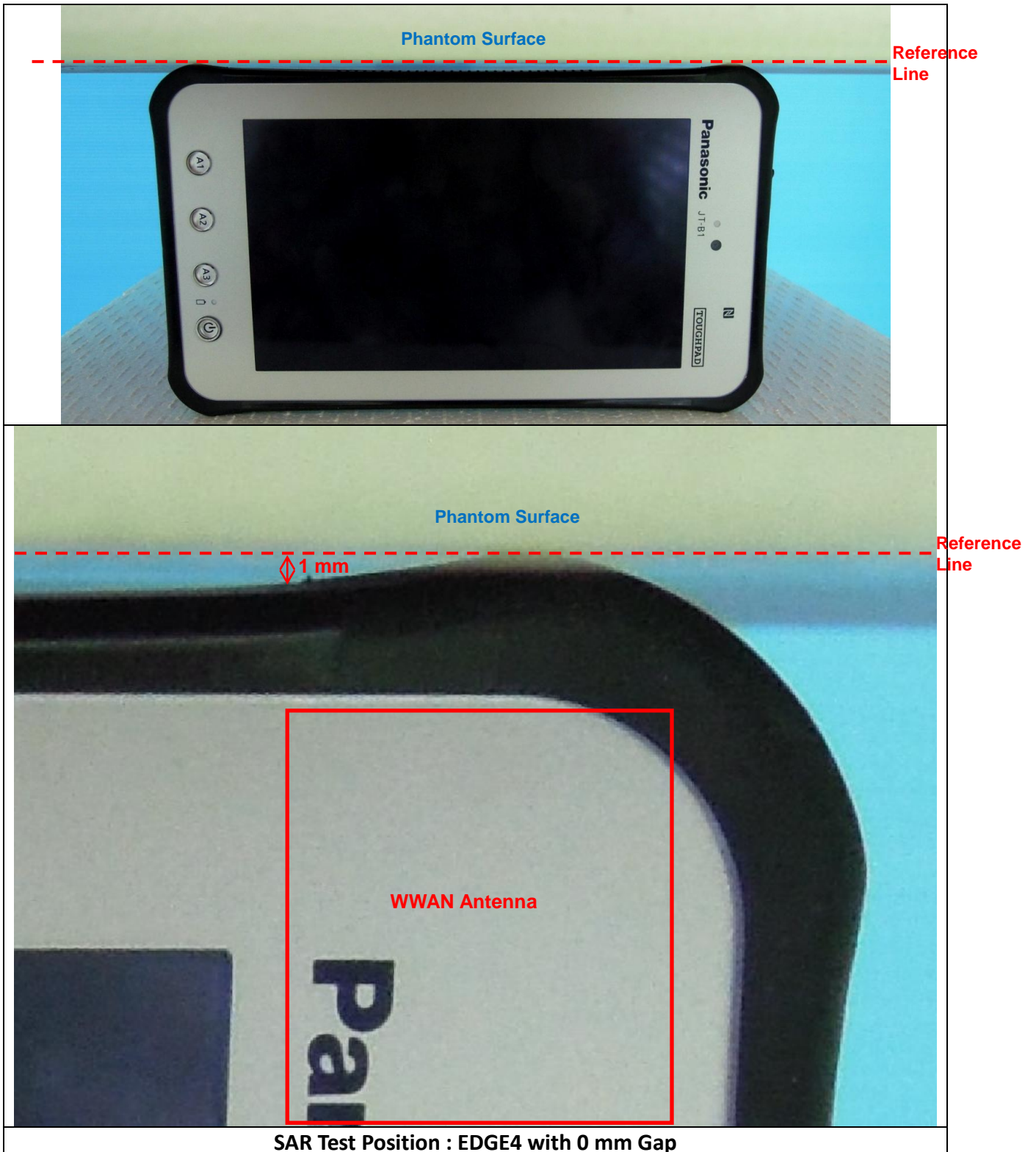
# FCC SAR Test Report

## <Reference Line for Separation Distance Determination>



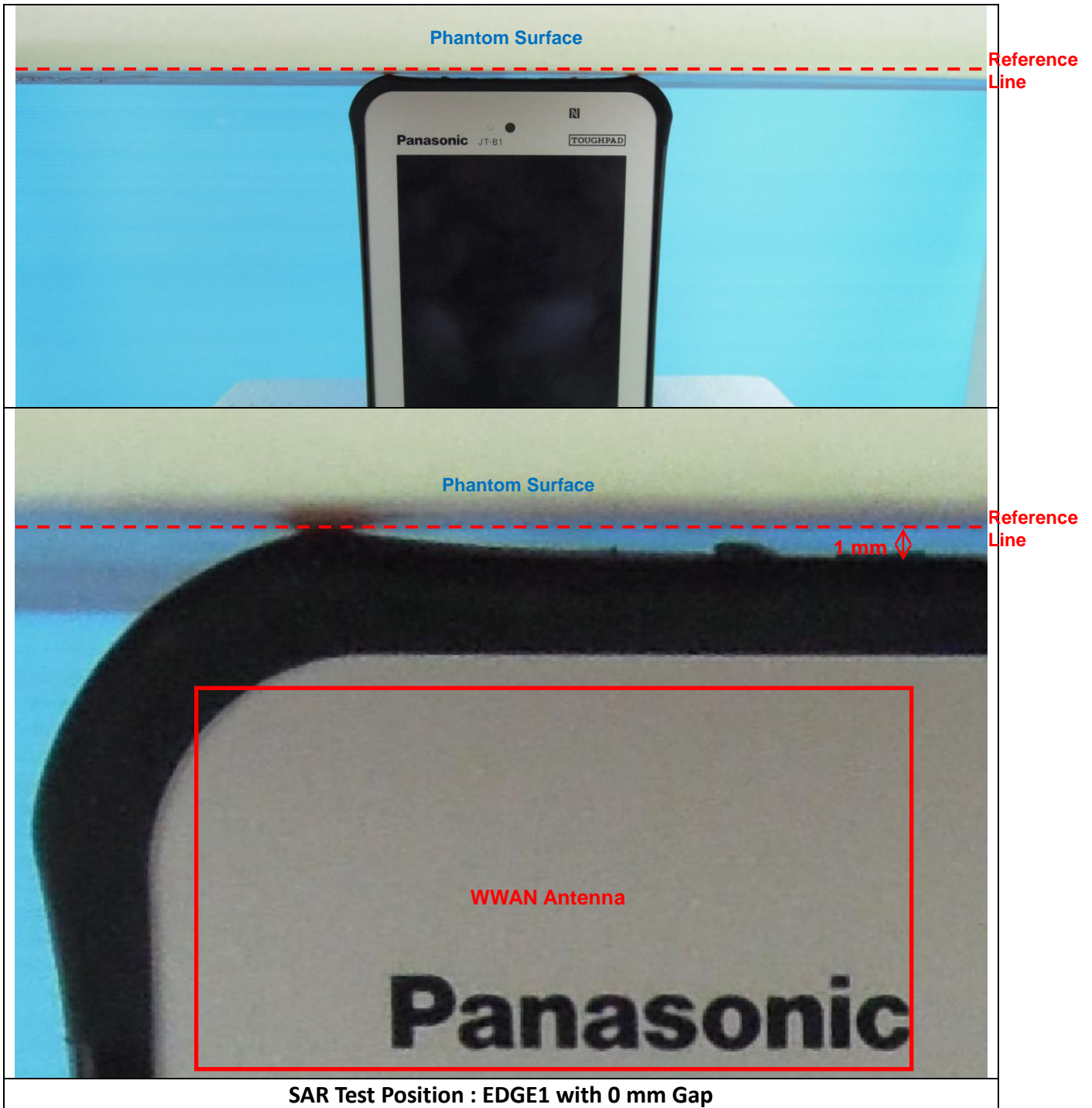
**Note:**

The rear face of this device is completely flat. For SAR testing, the rear face of this device is parallel and touches the flat phantom.



**Note:**

This device has curved edge. For SAR testing, the outer corner of both sides of this device touches the flat phantom. The separation distance between the outer surface most close to antenna and phantom is 1 mm.

**FCC SAR Test Report****Note:**

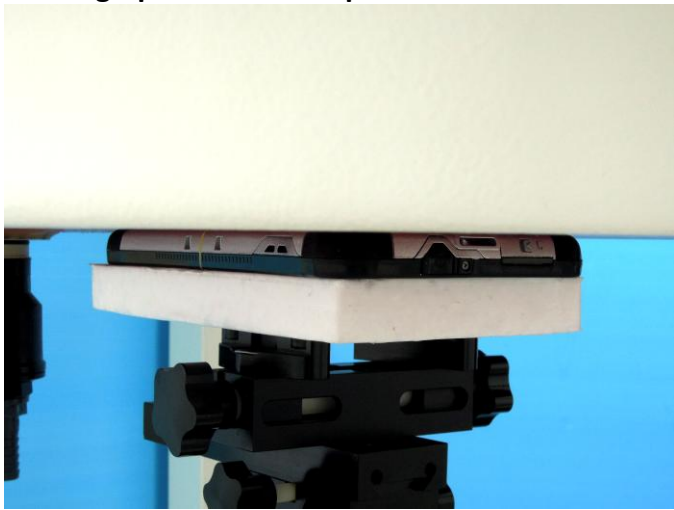
This device has curved edge. For SAR testing, the outer corner of both sides of this device touches the flat phantom. The separation distance between the outer surface most close to antenna and phantom is 1 mm.

**FCC SAR Test Report****Reference  
Line****SAR Test Position : EDGE2 with 0 mm Gap****Note:**

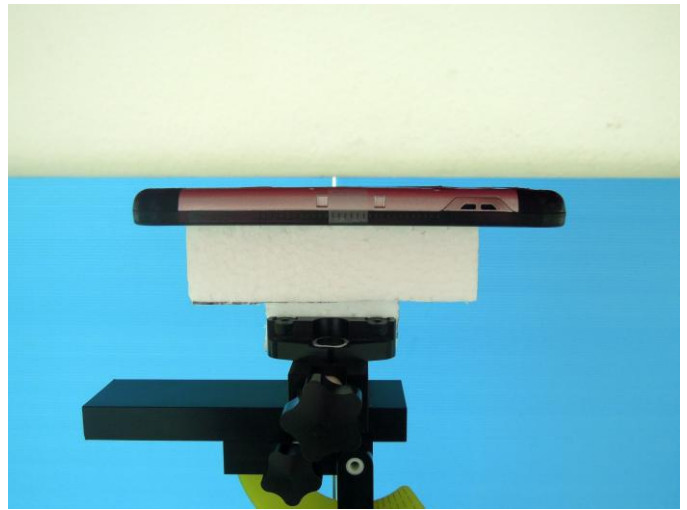
This device has curved edge. For SAR testing, the outer corner of both sides of this device touches the flat phantom.

# FCC SAR Test Report

## <Photographs of SAR Setup>



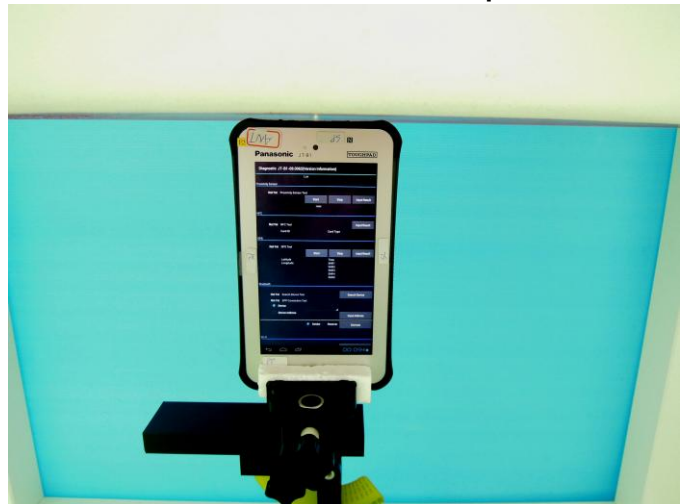
Rear Face with 0 mm Gap



Rear Face with 9 mm Gap



EDGE1 with 0 mm Gap



EDGE1 with 4 mm Gap



EDGE4 with 0 mm Gap



EDGE2 with 0 mm Gap