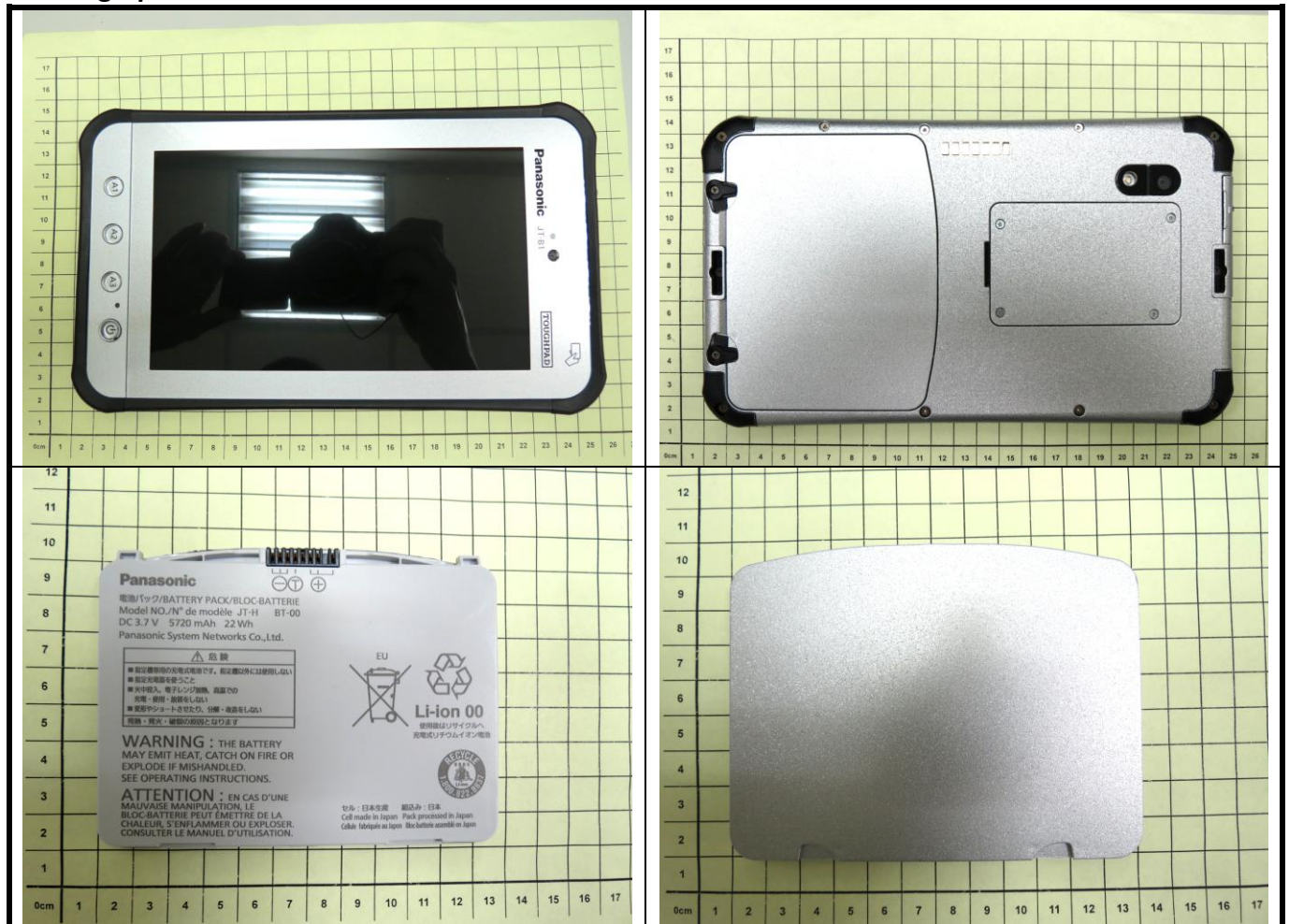




## **Appendix D. Photographs of EUT and Setup**

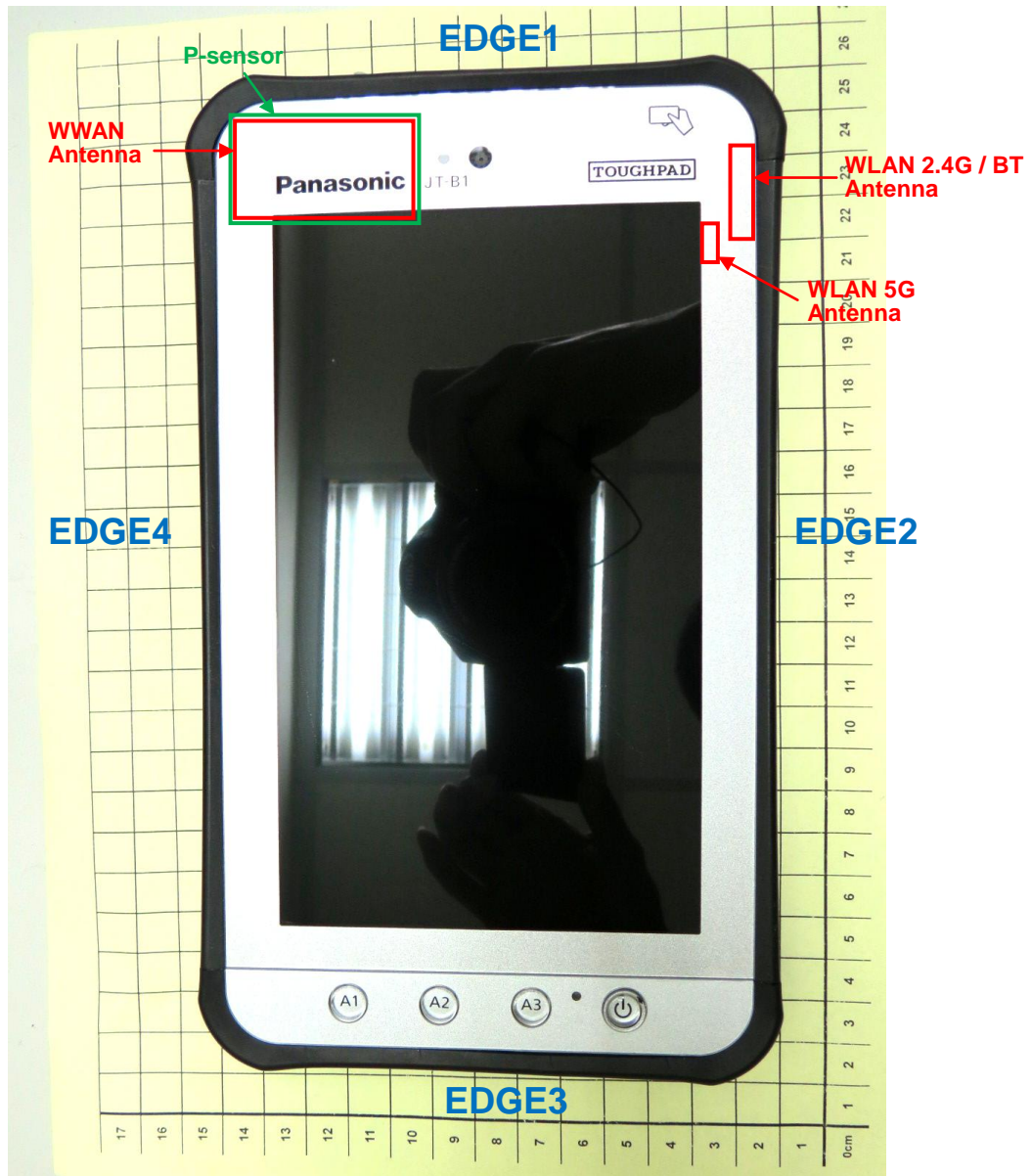
# FCC SAR Test Report

## <Photographs of EUT>



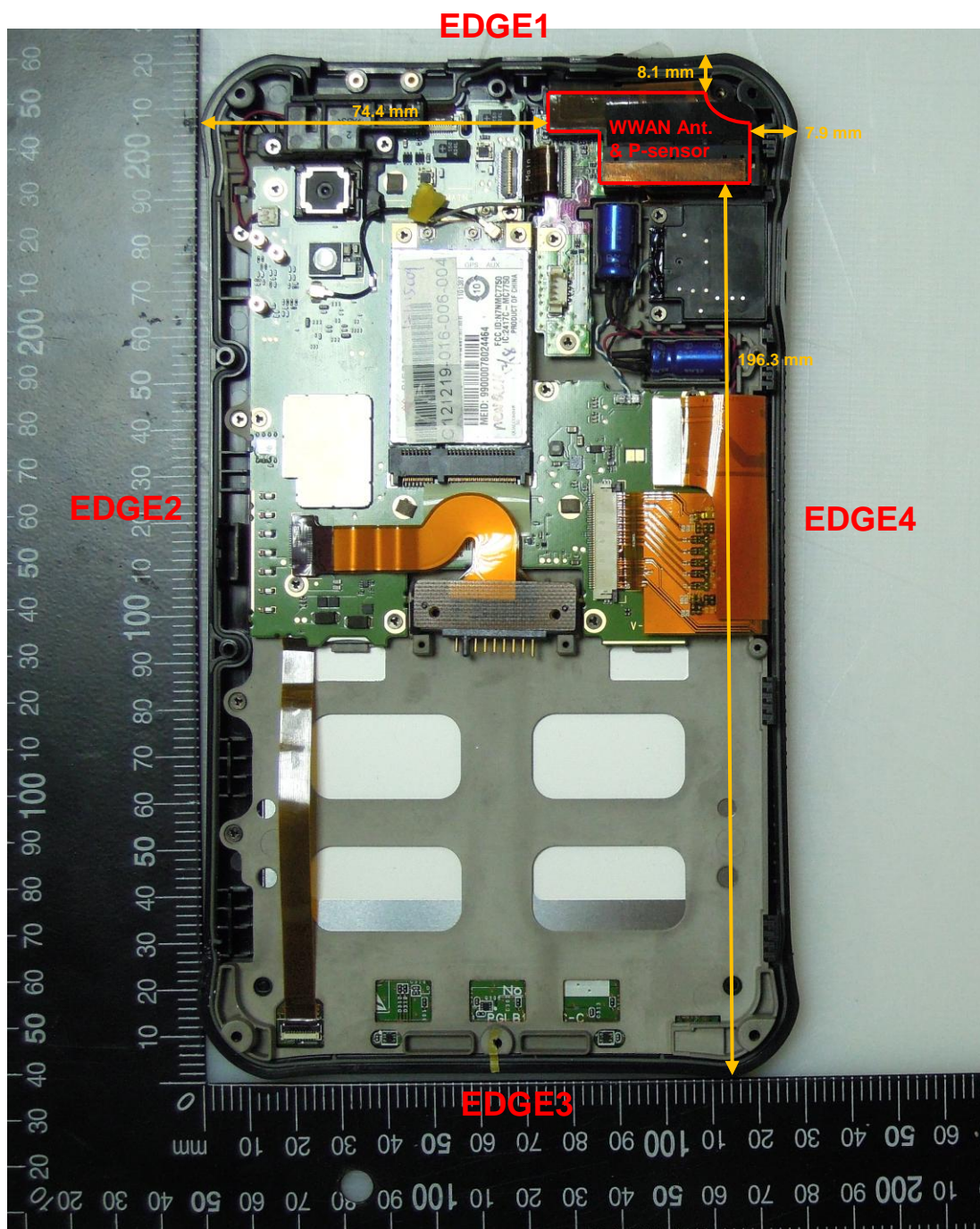
# FCC SAR Test Report

## <Location of Antennas, EUT Front View>



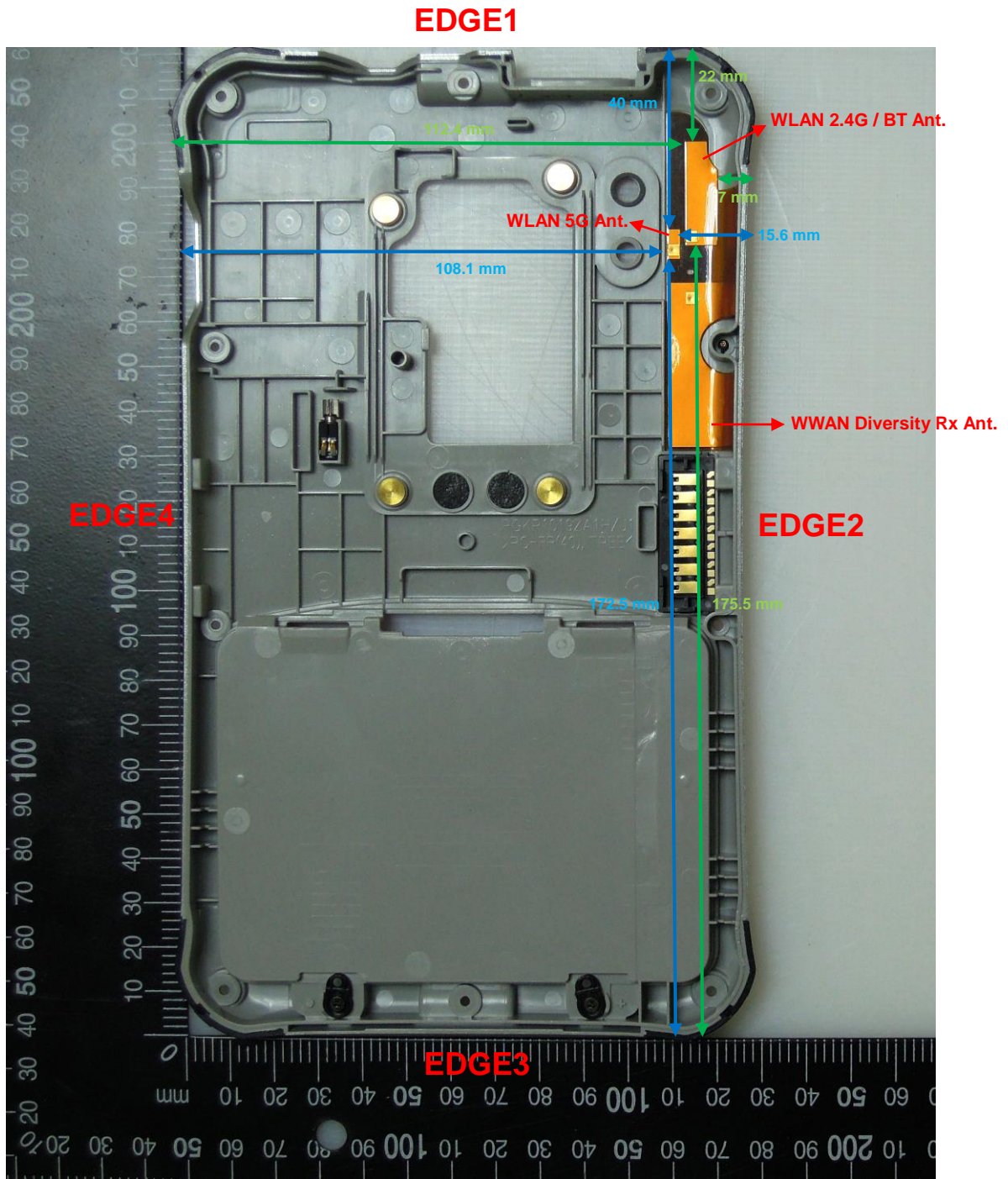
The separation distance for antenna to edge:

Antenna	To EDGE1 (mm)	To EDGE2 (mm)	To EDGE3 (mm)	To EDGE4 (mm)
WWAN	8.1	74.4	196.3	7.9
WLAN 2.4G / BT	22.0	7.0	175.5	112.4
WLAN 5G	40.0	15.6	172.5	108.1



<EUT Rear View>

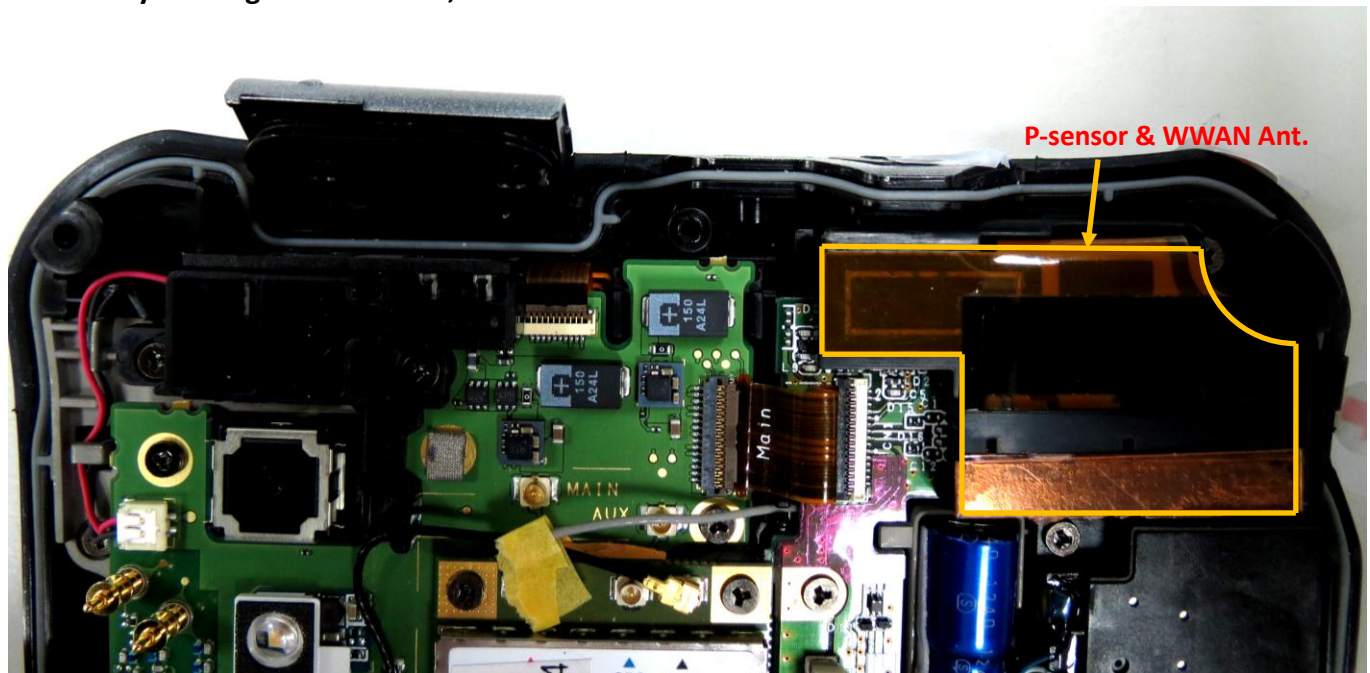
# FCC SAR Test Report



<EUT Front View>

## FCC SAR Test Report

### <Proximity Sensing Path Location, EUT Rear View>



#### Note:

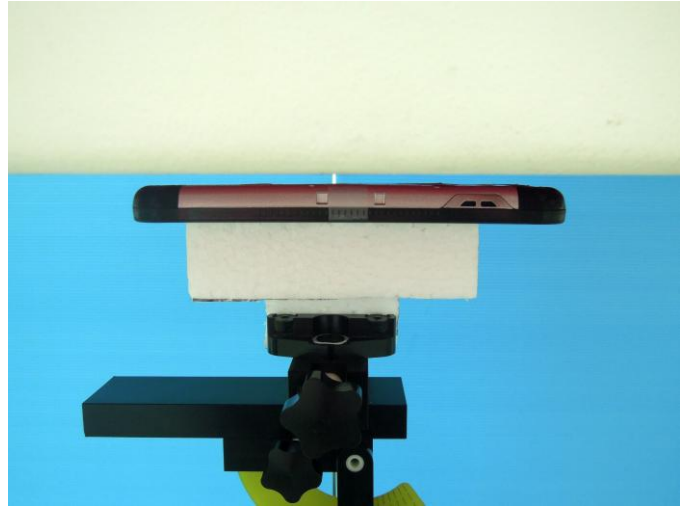
The proximity sensor is combined with the WWAN Tx antenna in a single FPC (Flexible Printed Circuit), and the P-sensor occupies the same area as the WWAN antenna. Since the technical document related to the design of proximity sensor and power reduction is confidential, the detail is described in the separate document, not in this SAR report, and please refers to the technical documents as “The Proximity Sensor Technical Description” and “PBA Document for Power Reduction”.

# FCC SAR Test Report

## <Photographs of SAR Setup>



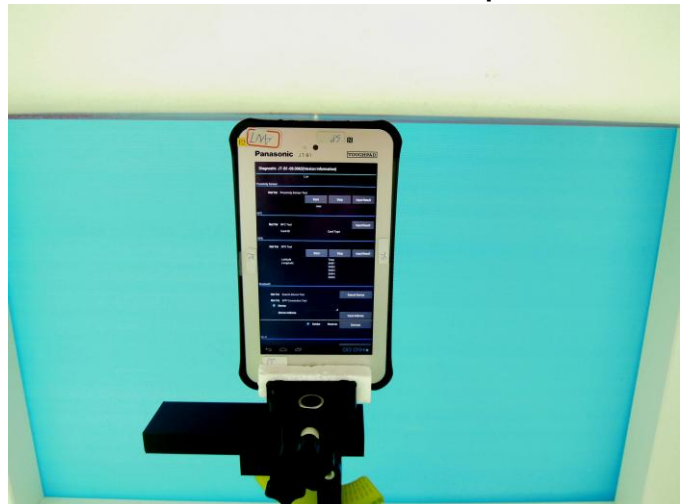
Rear Face with 0 mm Gap



Rear Face with 9 mm Gap



EDGE1 with 0 mm Gap



EDGE1 with 4 mm Gap



EDGE4 with 0 mm Gap



EDGE2 with 0 mm Gap