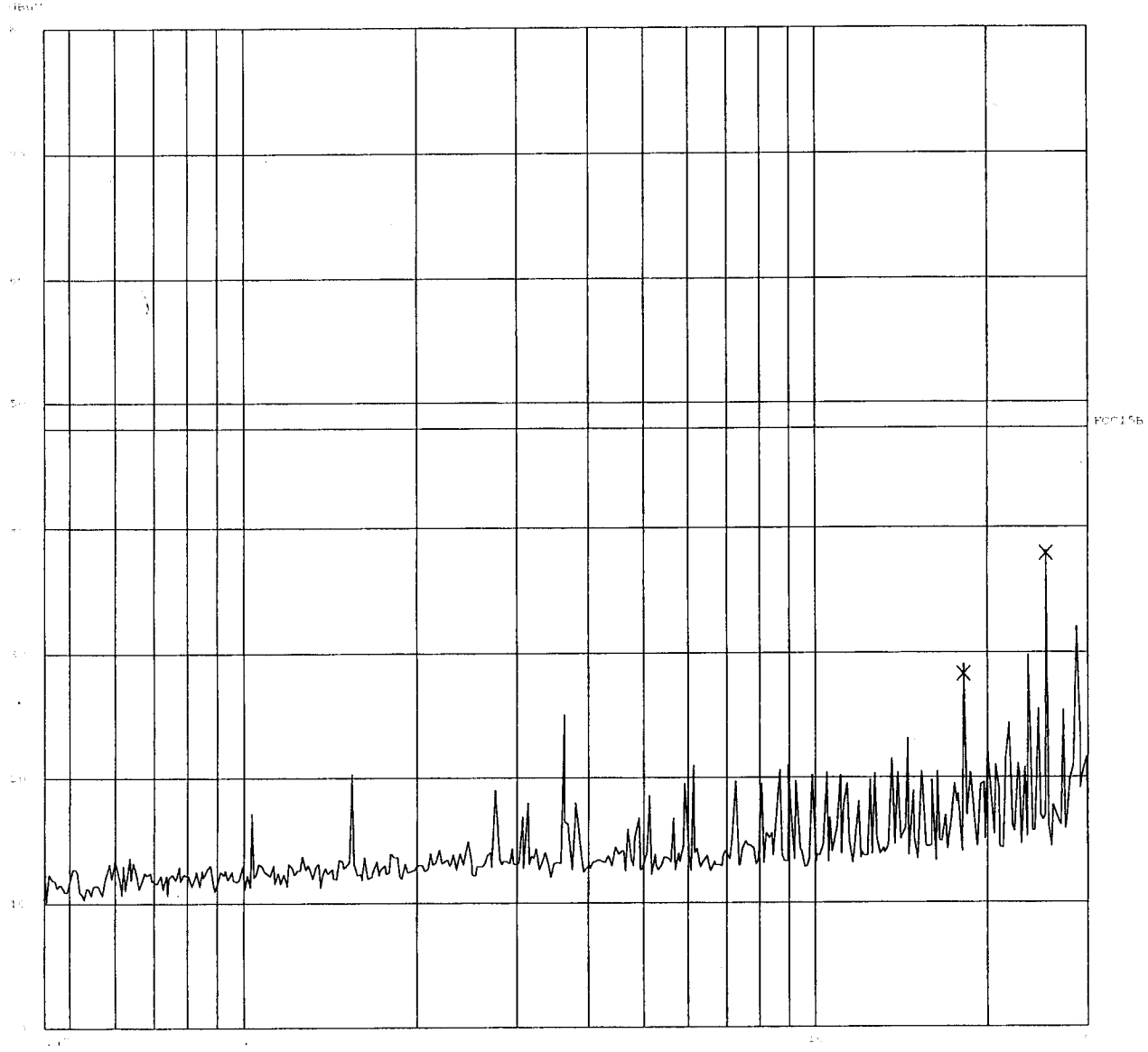


Report No.: 9901180
 Mode: Charging

Tested Equipment: Repair Kit 0000130
 Scan Settings: 1 Param
 Frequency Res: 1000000 Hz
 Received Settings: 1000000000 Hz
 Start: 2.00 Stop: 50 LF BW: Detector: H Time: ATTN: Preamp: Off
 1500 100 PE 20000 AUTO LI OFF 60dB

Final Measurement: 10 dB
 Transducer No.: Start Stop Name
 3 9E 30H E1078
 Res: 1000000 Hz
 Subrange: 10
 Res: 1000000 Hz



Ctrl. No.: N/A

ITS Intertek Testing Services

ETL Testing Laboratories

Report No.: 9901180
Mode: Charging

Tested By: Hong, Report No.: 9901180

Scan Settings (1 Range)

Frequencies			Receiver Settings					
Start	Stop	Step	IF BW	Detector	M-Time	Atten	Preamp	OpRge
450k	30M	5k	10k	PK	20ms	AUTO	LN OFF	60dB

Final Measurement Results:

Frequency MHz	QP Level dBuV	QP Limit dBuV
18.16500	28.2	48.0
25.43000	37.8	48.0

* limit exceeded

Ctrl. No.: N/A

ITS Intertek Testing Services

ETL Testing Laboratories

Report No.: 9901180
Mode: Standby

Tested By: Hong, Report No.: 9901180

Scan Settings (1 Range)

Frequencies			Receiver Settings					
Start	Stop	Step	IF BW	Detector	M-Time	Atten	Preamp	OpRge
450k	30M	5k	10k	PK	20ms	AUTO	LN OFF	60dB

Final Measurement Results:

Frequency MHz	QP Level dBuV	QP Limit dBuV
25.43000	37.5	48.0

* limit exceeded

Ctrl. No.: N/A

Report No.: 9901180
Mode: Transmission

Tested By: Hong, Report No.: 9901180

Scan Settings (1 Range)

Frequencies			Receiver Settings					
Start	Stop	Step	IF BW	Detector	M-Time	Atten	Preamp	OpRge
450k	30M	5k	10k	PK	20ms	AUTO	LN OFF	60dB

Final Measurement Results:

Frequency MHz	QP Level dBuV	QP Limit dBuV
18.16500	28.7	48.0
25.43000	36.6	48.0

' limit exceeded

Ctrl. No.: N/A