

# Appendix

## External Photos

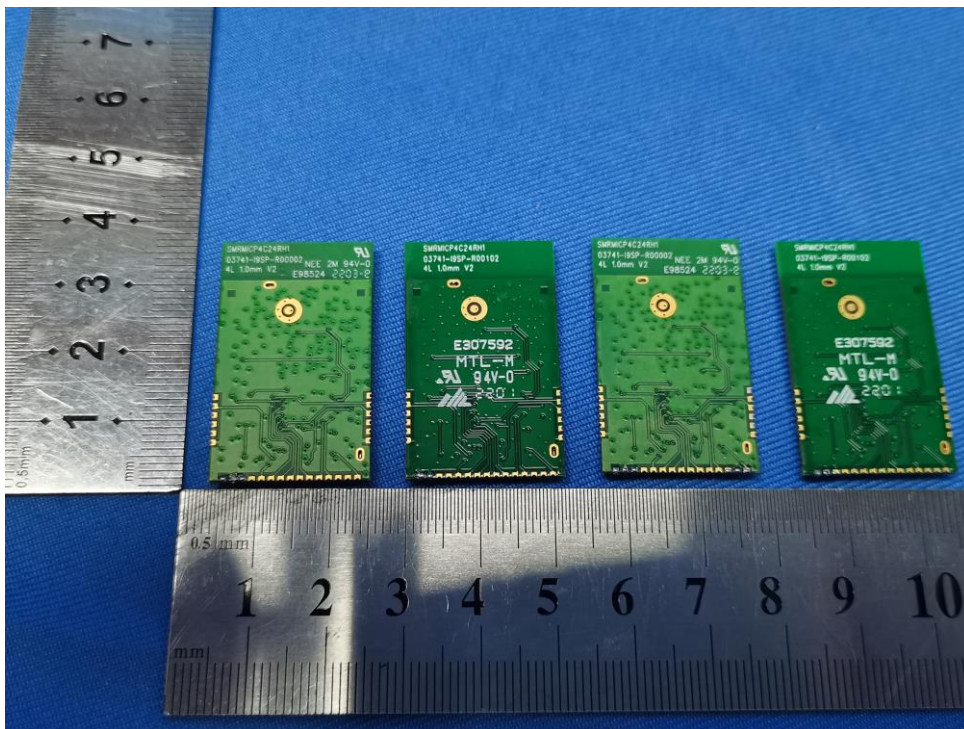
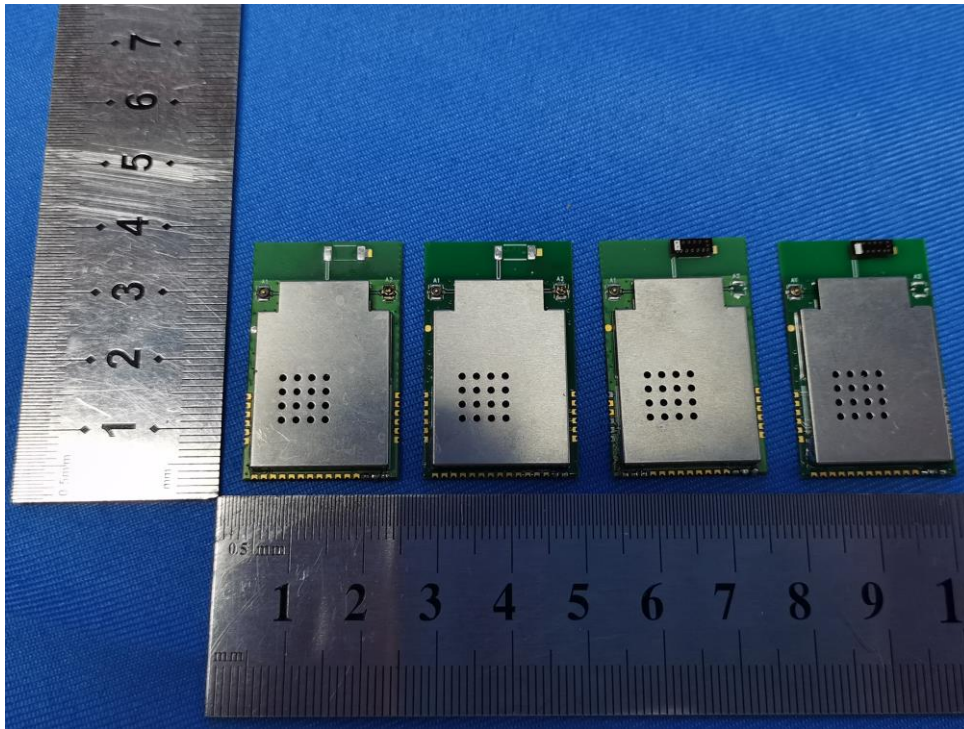
### for GZCR2206000781AT



Unless otherwise agreed in writing, this document is issued by the Company subject to its General Conditions of Service printed overleaf, available on request or accessible at <http://www.sgs.com/en/Terms-and-Conditions.aspx> and, for electronic format documents, subject to Terms and Conditions for Electronic Documents at <http://www.sgs.com/en/Terms-and-Conditions/Terms-e-Documents.aspx>. Attention is drawn to the limitation of liability, indemnification and jurisdiction issues defined therein. Any holder of this document is advised that information contained hereon reflects the Company's findings at the time of its intervention only and within the limits of Client's instructions, if any. The Company's sole responsibility is to its Client and this document does not exonerate parties to a transaction from exercising all their rights and obligations under the transaction documents. This document cannot be reproduced except in full, without prior written approval of the Company. Any unauthorized alteration, forgery or falsification of the content or appearance of this document is unlawful and offenders may be prosecuted to the fullest extent of the law. Unless otherwise stated the results shown in this test report refer only to the sample(s) tested and such sample(s) are retained for 30 days only.

Attention: To check the authenticity of testing / inspection report & certificate, please contact us at telephone: (86-755) 8307 1443, or email: [CN.Doccheck@sgs.com](mailto:CN.Doccheck@sgs.com)

### EUT Constructional Details (EUT Photos)



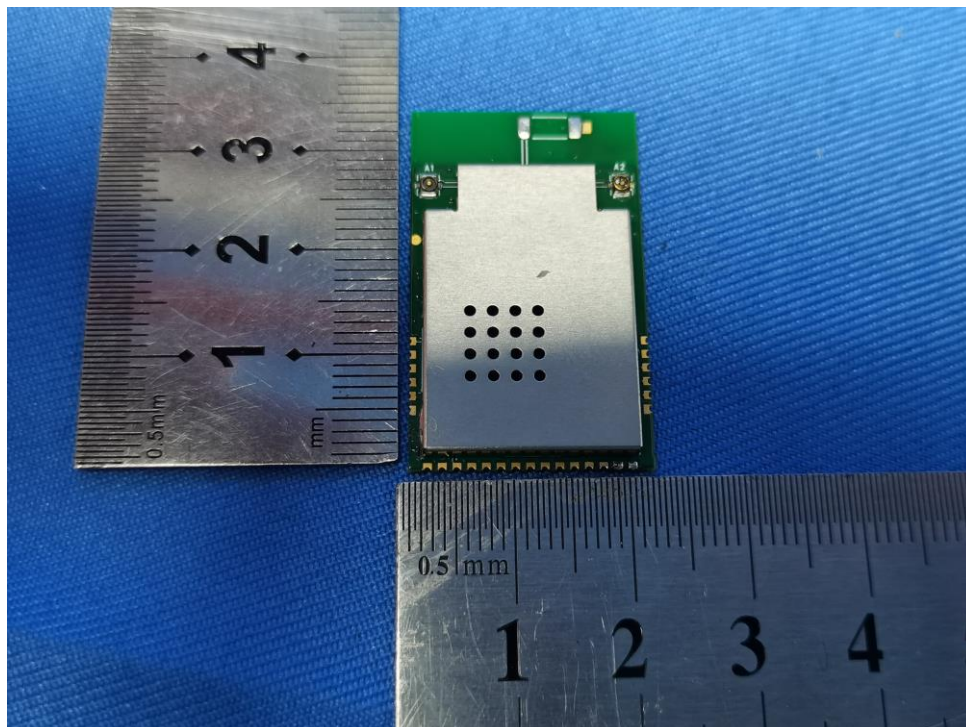


EMC-ARF-02 Rev 1.0



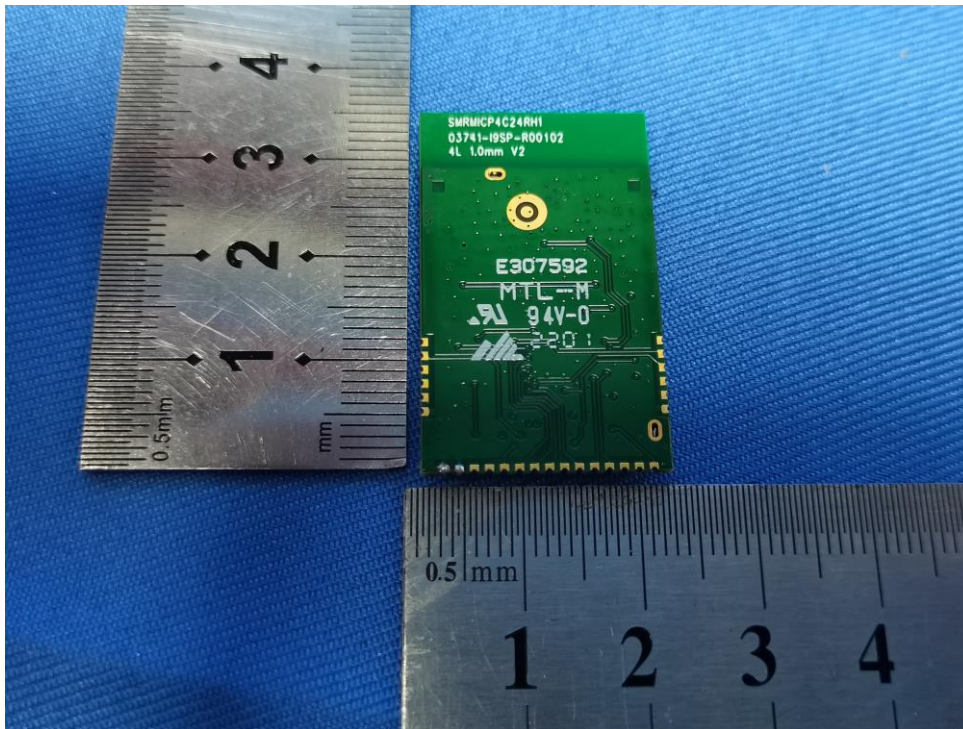
ANT1:  
WA-P-LA-03-301  
WA-P-LA-03-307  
WA-P-LA-03-308  
ANT2:  
WA-P-LA-05-007  
WA-P-LA-05-008  
WA-P-LA-05-009  
ANT3:  
RFPCA401535IMAB301  
RFPCA401540IMAB302  
RFPCA401545IMAB301  
(Left to Right)

Version: PCB A

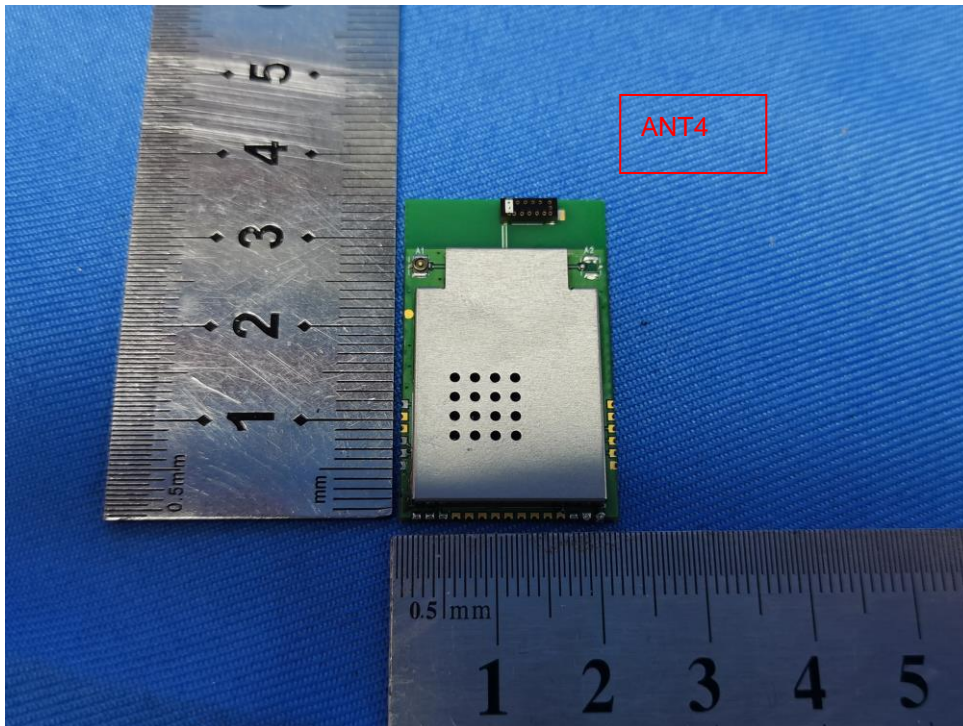




EMC-ARF-02 Rev 1.0



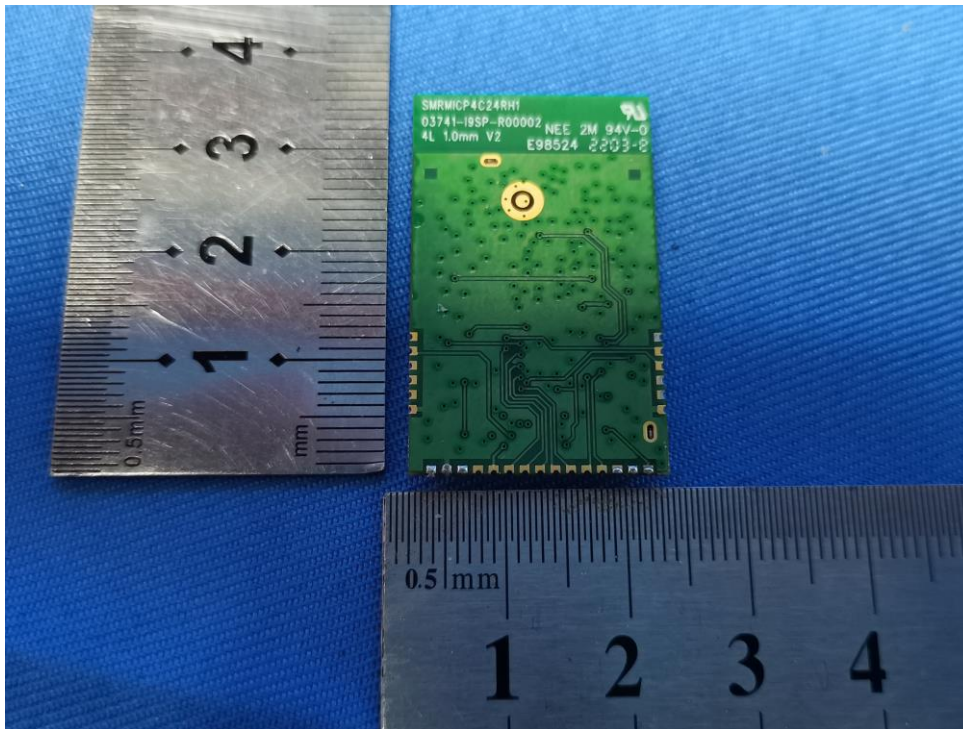
Version: PCB B



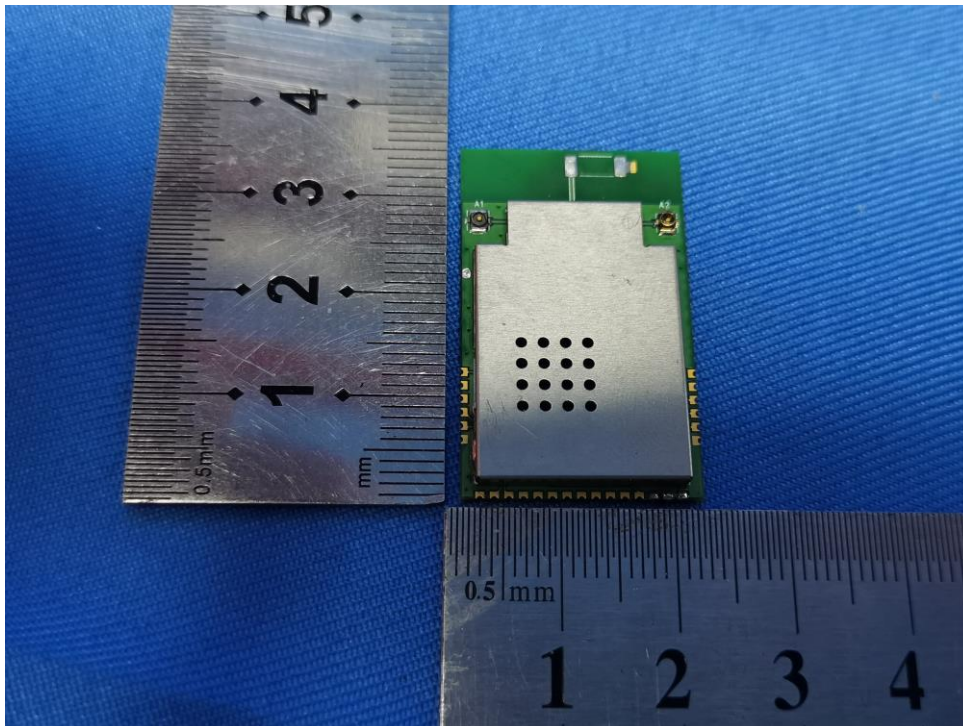
ANT4:  
CH2G4-6022-000D1-01



EMC-ARF-02 Rev 1.0

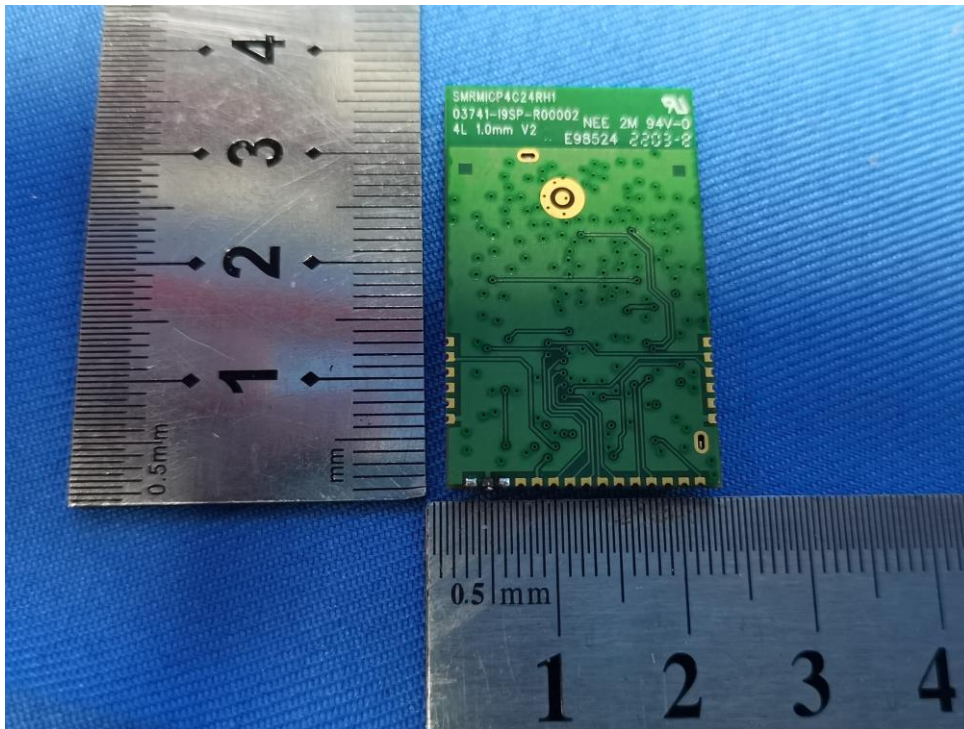


Version: PCB C

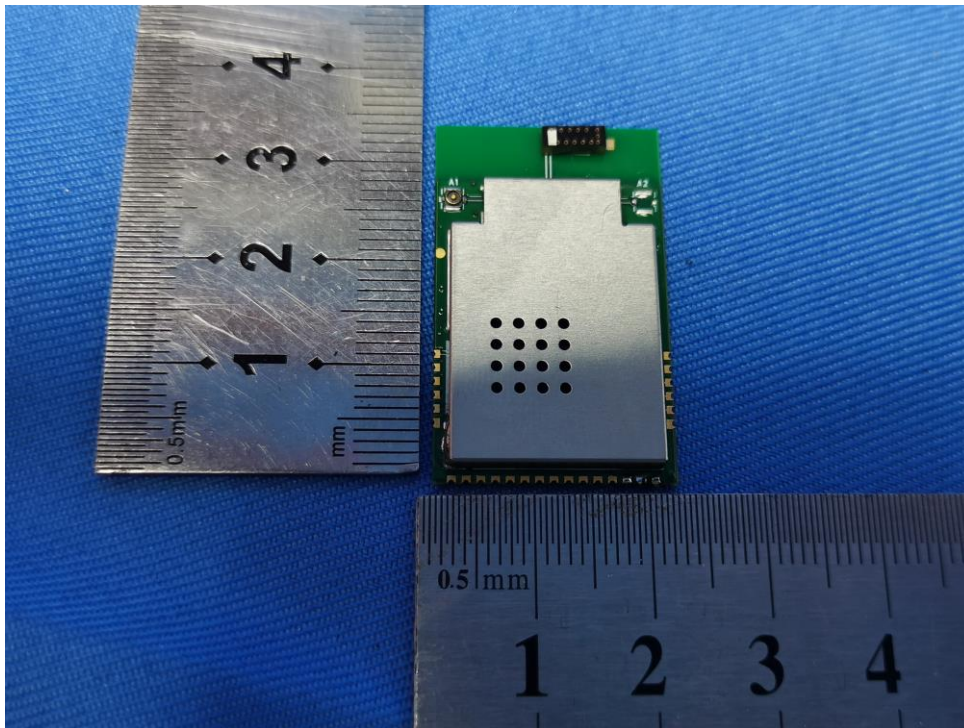




EMC-ARF-02 Rev 1.0



Version: PCB D



EMC-ARF-02 Rev 1.0

