

NOTE:

This equipment has been tested and found to comply with the limits for a Class B digital device, pursuant to Part 15 of the FCC Rules. These limits are designed to provide reasonable protection against harmful interference in a residential installation. This equipment generales uses and can radiate radio frequency energy and, if not installed and used in accordoance with the onstructions, may cause harmful interference to radio communications. However, there is no guarantee that interference will not occur in a particular installation. If this equipment dose cause harmful interference to radio or television reception, which can be determined by turning the equipment off and on, the user is encouraged to try to correct the interference by one or more of the follwing measures:

- Reorient or relocate the recoiving antenna.
- Increase the separation between the equipment and receiver.
- Connect the equipment into an outlet on a circuit different from that to which the receiver is connected.
- Consult the dealer or an experienced radio/TV technician for help.

This device complies with Part 15 of the FCC Rules. Operation is subject to the following two conditions: (1) This device may not cause harmful interference, and (2) This device must accept any interference received, including interference that may cause undesired operation,

NOTE: THE MANUFACTURER IS NOT RESPONSIBLE FOR ANY RADIO OR TV INTERFERENCE CAUSED BY UNAUTHORIZED MODIFICATIONS TO THIS EQUIPMENT, SUCH MODIFICATIONS COULD VOID THE USER AUTHORITY TO OPERATE THE EQUIPMENT.

This Class B digital apparatus complies with Canadian ICES-003.

LIMITED WARRANTY STATEMENT

General Terms This Limited Warranty applies to the product enclosed ("the Product") distributed by Intellectual Solutions, Inc., doing bussiness as "Goodtimes", sold with this Limited Warranty Statement. This Limited Warranty is applicable in all countries.

• Goodtimes warrents that the Product you have purchased from Goodtimes is free from defects in materials or workmanship under normal use during the warranty period.

The warranty period starts on the date of purchase and cantinues for ninety (90) days. Your dated sales or delivery receipt, showing the date of purchase of the Product, is your prool of the purchase date. • During the warranty period, Goodtimes will repair or replace any defective parts with new parts, or, at Goodtimes's discrelion, used part that meet or exceed performance specifications for new parts. All parts removed under this warrantly become the property of Goodtimes. The replacement part takes on the warrantly status of the removed part or product. • This Limited Warranty does not apply to expendable parts. This Limited Warranty does not extend to any product from which the serial number has been removed or that has been damaged or endered defective (a) as a result of accident, misuse, abuse or other external cause; (b) by operation outside the usge parameters stated in the Instruction Sheet that shipped with the Product; (c) by the use of parts not manufactured or sold by Goodtimes; or (d) by modification or service by anyone other than Goodtimes.

Limitation of Liability Goodtimes is not liable for any damages caused by the Product or the failure of the Product to perform, including any direct or indirect damahes for parsonal injury, lost profits, lost savings, incidental damages, consequential damages, or any other pecuniary loss arising out of the use or ineility to use the Product. Goodtimes is not liable for any clarim made by a third party or made by you for a third party. • This limitation applies whether damages are sought, or a claim made, under this Limited Warranty or as a tort claim (including negligence and strict product liability), a contract claim, or any other claim. This limited cannot be waived or amended by any person. This limitation of liability will be effective even if you have advised Goodtimes or an authorized representative of Goodtimes of the possibility of any such damages.

EXCEPT AS EXPRESSLY SET FORTH IN THIS LIMITED WARRANTY, GOODTIMES MAKES NO OTHER WARRANTIES, EXPRESS OR IMPLIED, INCLUDING ANY IMPLIED WARRANTIES OF MERCHANTABILITY AND FITNESS FOR A PARTICULAR PURPOSE. GOODTIMES EXPRESSLY DISCLAIMS ALL WARRANTIES NOT STATED IN THIS LIMITED WARRANTY. ANY IMPLIED WARRANTIES THAT MAY BE IMPOSED BY LAW LIMITED TO THE TERMS OF THIS WORLDWIDE LIMITED WARRANTY STATEMENT.

WARNING: Goodtimes™ has in the past, and will in the future, take any and all legal steps necessary in order to protect our proprietary trademarks, patents, trade dress, and copyrights. This applies to, but is not limited to, products, product design, graphics, packaging and literature. We will prosecute to the fullest extent of the law any persons or entilies who infringe upon these rights.

This device complies with Part 15 of the FCC Rules. Operation is subject to the following two conditions: (1) this device may not cause harmful interference, and (2) this device must accept any interference received, including interference that may cause undesired operation.

Dist. By Goodtimes™ 41 James Way Eatontown, NJ 07724. (732) 720-2713
©2011 Intellectual Solutions, Inc., All Rights Reserved.
All designs, logos and images are the exclusive property of Intellectual Solutions, Inc. and/or its affiliates.
US & FOREIGN INTELLECTUAL PROPERTY RIGHTS PENDING

Rev. 1/6/12
Printed in China



GT-200-ULSF

LED LIGHTED FLOATING POOL FOUNTAIN

Quick Setup Instructions

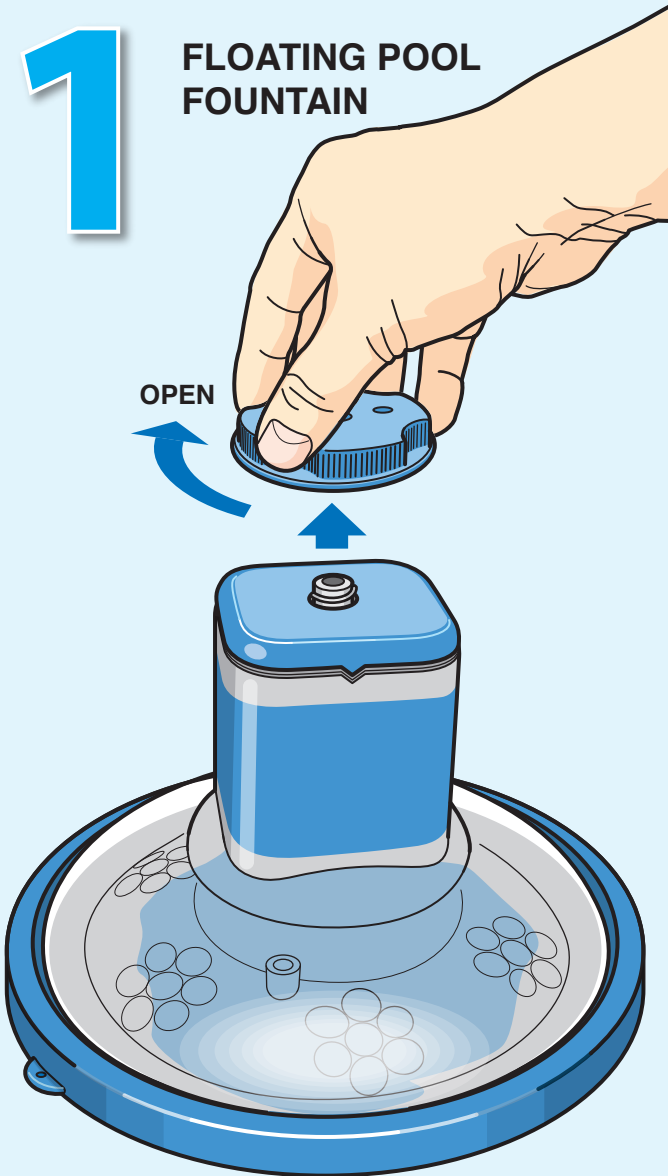
PLEASE READ BEFORE USING DEVICE

1. To start fountain, place unit in water and press FTN buton twice. Submerge unit for 10-15 seconds until fountain sprays.
2. Remove from pool when not in use or while cleaning so that unit is not damaged by skimmers or other devices.
3. This product should be operated in at least 12 inches of water to get the maximum water height. It is recommended to clean out the filter screen at bottom of unit periodically to ensure proper water flow.

1

FLOATING POOL FOUNTAIN

OPEN

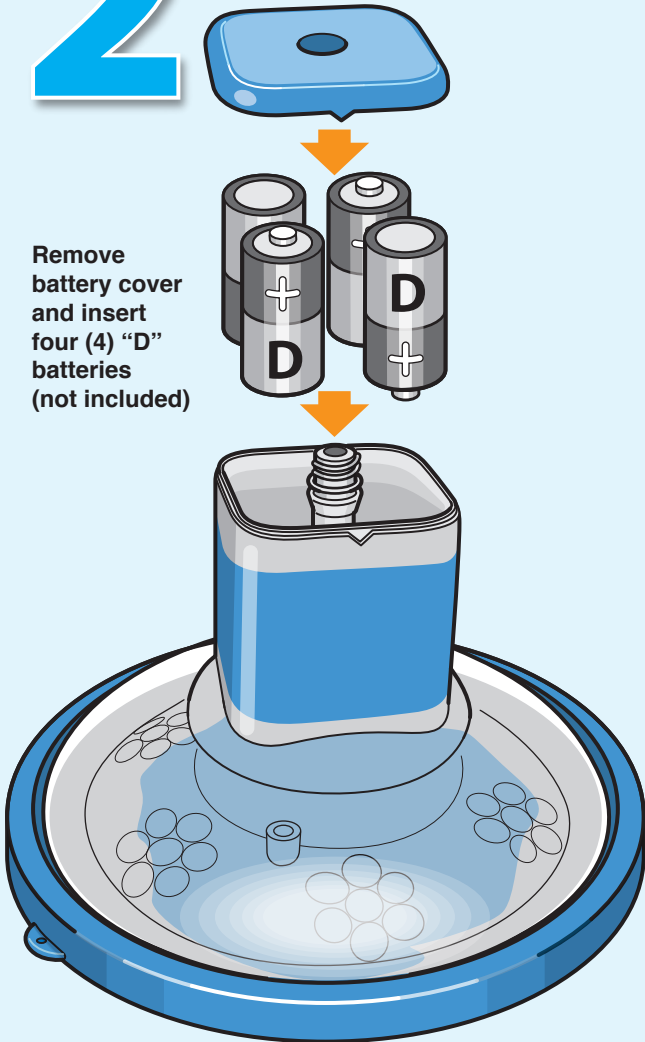


Turn cap on battery casing counter clockwise to open

2

BATTERY INSTALLATION

Remove battery cover and insert four (4) "D" batteries (not included)



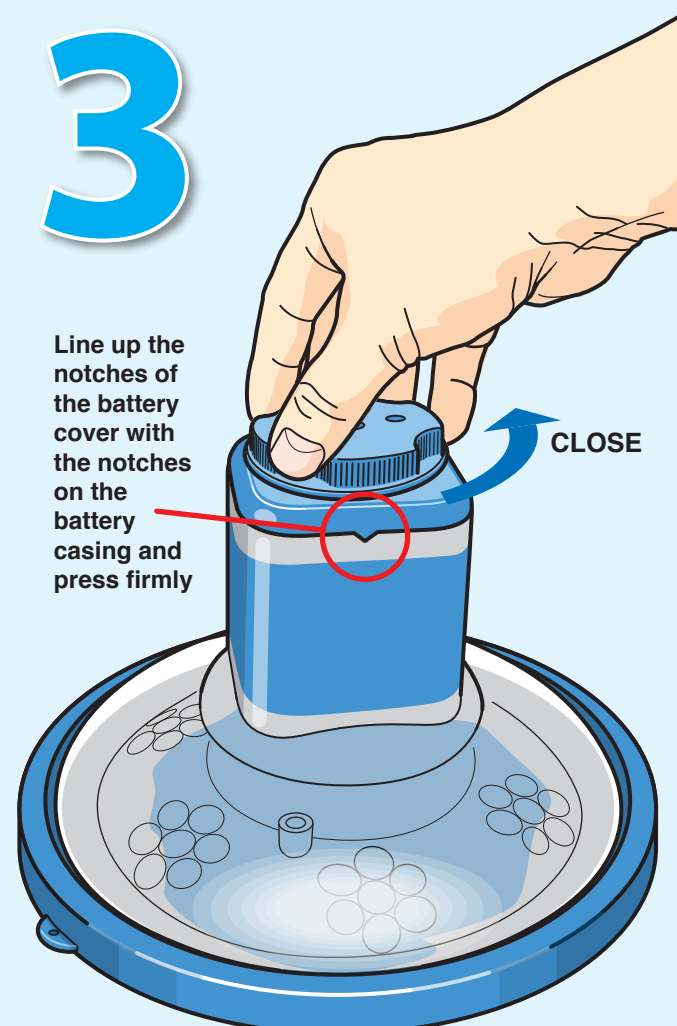
Do Not Mix Old and New Batteries
Do Not Mix Alkaline, Standard, or Rechargeable Batteries

NOTE!

1. Do not mix old and new batteries.
2. Do not mix alkaline, standard, or rechargeable batteries.
3. The supply terminal is not to be short circuited.
4. Batteries are to be inserted with the correct polarity.
5. Remove exhausted batteries and dispose of properly.

3

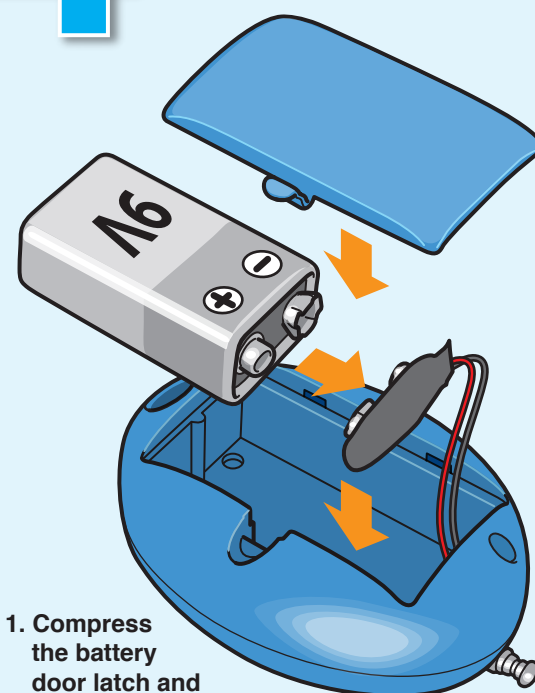
Line up the notches of the battery cover with the notches on the battery casing and press firmly



Screw cap on battery casing and tighten securely to ensure that water does not seep into battery casing.

4

TO REPLACE THE BATTERIES IN THE REMOTE CONTROL

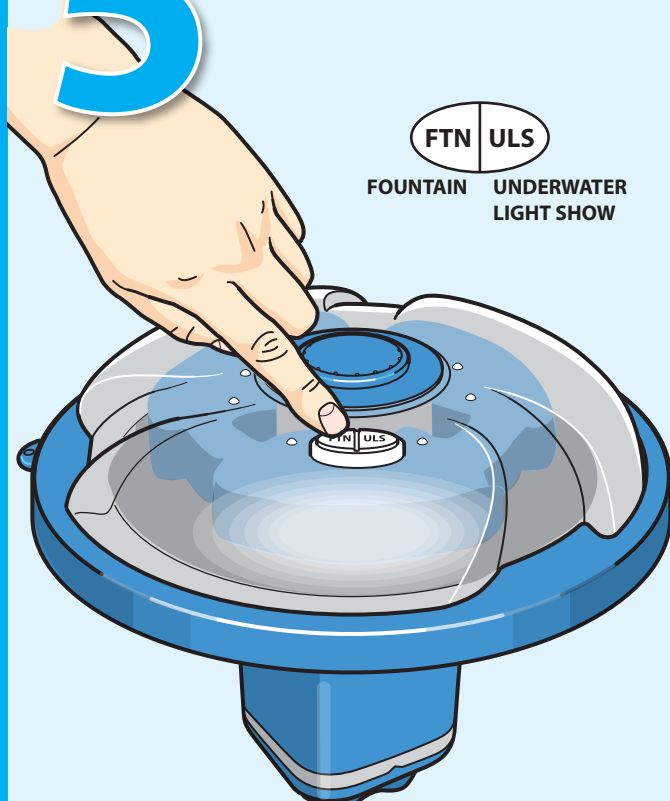


1. Compress the battery door latch and remove battery door.
2. Insert one (1) 9V battery (not included) making sure that the terminals are aligned.
3. Re-insert the battery door into the notches on the casing.
4. Push the door closed until the battery door re-latches.

5

ON/OFF/MODE BUTTON ON UNIT

FTN ULS
FOUNTAIN UNDERWATER
LIGHT SHOW

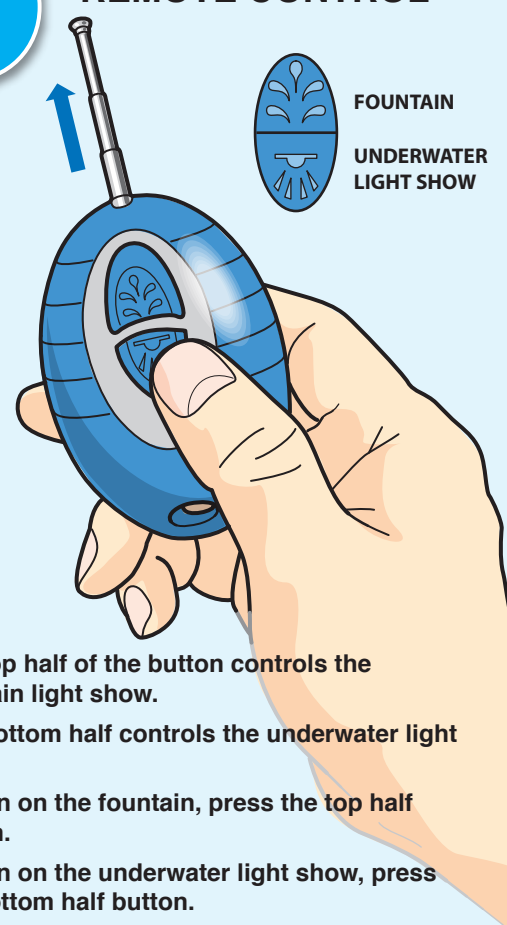


1. To turn on the fountain, press the button twice. To turn on the underwater light show, press the button once.
2. Pressing the button again will select the next fountain or light show.
3. To turn off, press and hold the buttons down until the product fountain and light show shut off (approximately 3 seconds).

6

ON/OFF/MODE BUTTON ON REMOTE CONTROL

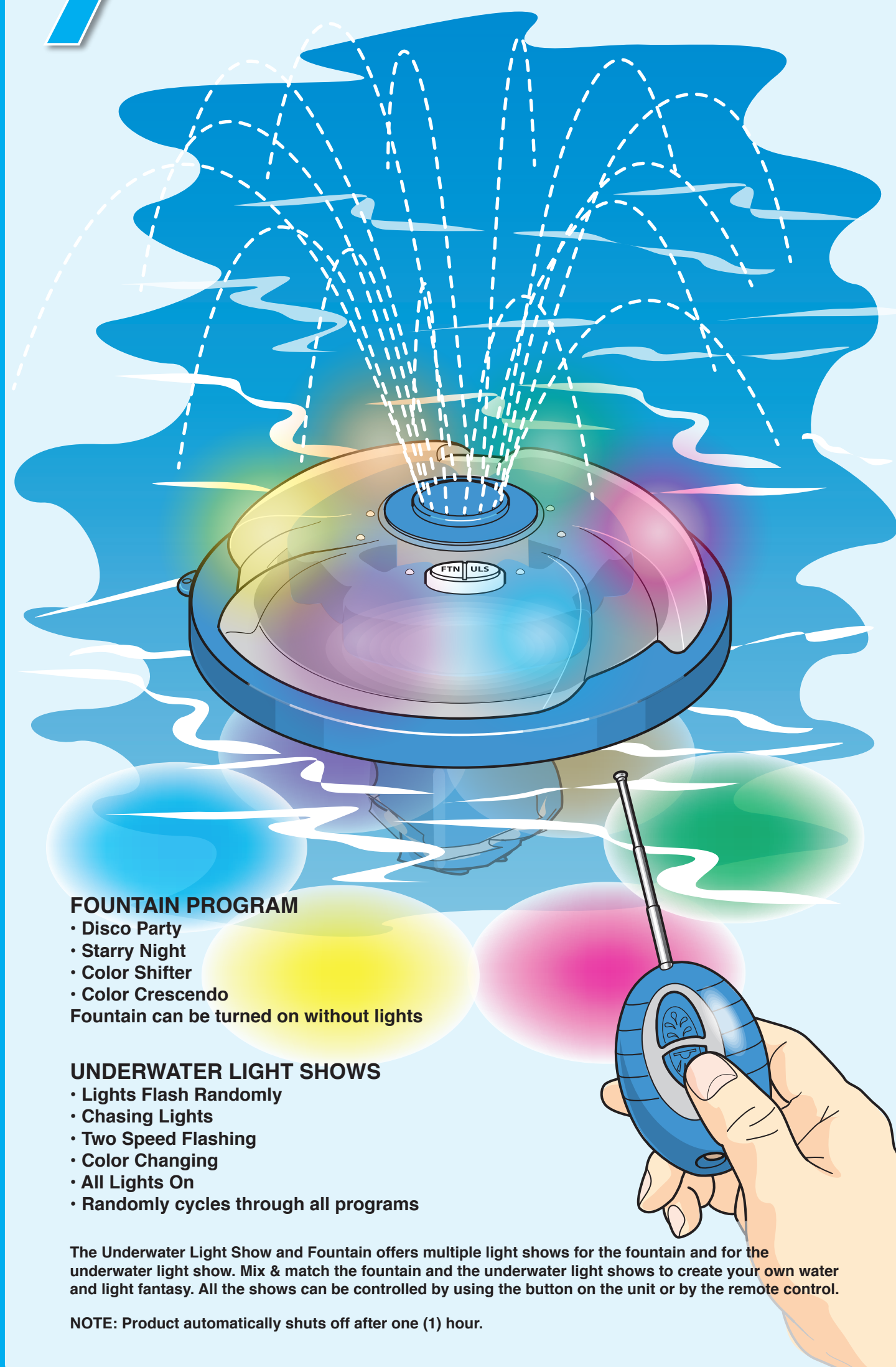
FOUNTAIN
UNDERWATER
LIGHT SHOW



1. The top half of the button controls the fountain light show.
The bottom half controls the underwater light show.
2. To turn on the fountain, press the top half button.
3. To turn on the underwater light show, press the bottom half button.
4. Pressing the button again will select the next light show.
5. To turn off, press the button seven times the product shuts off.

7

ON/OFF & SELECTING THE LIGHT PROGRAM



FOUNTAIN PROGRAM

- Disco Party
 - Starry Night
 - Color Shifter
 - Color Crescendo
- Fountain can be turned on without lights

UNDERWATER LIGHT SHOWS

- Lights Flash Randomly
- Chasing Lights
- Two Speed Flashing
- Color Changing
- All Lights On
- Randomly cycles through all programs

The Underwater Light Show and Fountain offers multiple light shows for the fountain and for the underwater light show. Mix & match the fountain and the underwater light shows to create your own water and light fantasy. All the shows can be controlled by using the button on the unit or by the remote control.

NOTE: Product automatically shuts off after one (1) hour.

WARNING:
SEIZURES - PEOPLE WITH PHOTOSENSITIVE EPILEPSY CAN HAVE SEIZURES TRIGGERS BY FLICKERING OR FLASHING LIGHTS SUCH AS STROBE OR DISCO LIGHTS. KEEP OUT OF REACH OF CHILDREN. THIS IS NOT INTENDED AS A TOY.