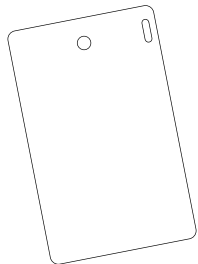


## USER MANUAL

MangoTek®

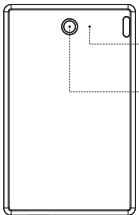
### SlimTag Pro Location Finder

WORKS WITH iOS



**SLIMTAG PRO**  
Thank you for purchasing our product. In order to give you a better user experience, please carefully read and strictly follow the instructions and precautions before use, and keep the instructions properly for reference.

M



LED Indicators

Button



### Product Settings

1. You need an iPhone, iPad, Macbook with iOS 15.0 or iPadOS 15.0 or Mac OS or later and Apple-ID two-factor authentication enabled.
2. Turn on Bluetooth on your Apple device, and go to 'Settings' → 'Privacy' → turn on 'Location Services', then scroll down and click Find My, allow the location access and turn on 'Precise Location'.
3. When using the tag for the first time, you only need to press the button shortly, then you can start connecting when you hear the sound of 'beep'.
4. Open the Find My app, then select the items tab.
5. Click 'Add Item' and then click 'Add Other Items'.
6. After finding your item, press 'Connect' and follow the instructions on the screen until it is successfully added.

### Set Up 'Lost Mode'

1. To mark an item as lost when the tag is a certain distance away from the owner, you need to turn on the 'Lost Mode'.
2. Open Find My APP, click 'Items' at the bottom of the screen, then click the name of the lost item.
3. Under the 'Lost Mode', click 'Enable'.
4. Follow the instructions on the screen and enter a phone number that you can be contacted. To enter an email address instead, click 'Use Email Address'. Then click 'Enable'.

\*\*Please make sure to allow notifications from the Find My App.

### View Your Tag on the Map

1. Open the Find My app, then click the 'Items' Tab.
2. Select the tag you want to locate in the 'Items' list.
3. If the tag is within range of your device or the Find My network has detected it recently, you can see it on the map. The updated location and timestamp will be showed under its name.
4. If the tag is out of range of your device or any devices in the Find My network, you can see its last known location and time. To receive notifications when your tag is within range of your device or detected by the Find My network, turn on 'Notify When Found' under 'Notifications'.

### Play Sound

1. Open the Find My App on your iPhone, iPad or Macbook, then click the 'Items' tab.
2. In the 'Items' list, select the tag that you want to play a sound.
3. Click 'Play Sound'. If your tag is within range of the Bluetooth signal, it will play a sound.
4. To stop this sound before your tag stops automatically, you can click 'Stop Sound'.

### Anti-locating Function

1. If any tag and other Find My network accessory products is left far away from their owners and moved with you for a period of time, it can send a notification to your Apple device through the Find My app.
  2. These features are purposely built to prevent unknowing attempts to locate you, and if you feel your safety has been threatened, please contact local law enforcement.\*
- \*This product has included the function of preventing unauthorized locating by others. It should not be used to locate people and property that does not belong to you. In many countries and regions around the world, it is a crime to use these products to locate someone without their consent.

### Product Reset

1. Before resetting the tag, please confirm it is not bound by any Apple ID. If it is bound, you need to find and remove it from list in Find My App.
2. Short press the button once! hold the button for 5 seconds within 2 seconds, release it when you hear a long beep, and after the long beep ends, you will hear a ding sound, indicating a successful reset, and the item can be paired.
3. Put the tag close to the iOS device you want to connect. Open the Find My App and add the item.

### Product Removal

When you no longer need to locate the item, you can remove it in your Find My APP. Then the item will be removed from your Apple device and it can be connected to other Apple devices.

### SPECIFICATION

**MODEL:** RHK47A

APP : Find My Battery : 3.7V 110mAh

Bluetooth Version : BLE 5.3 Material : PC

Usage Time : About 2 years (Laboratory data for reference only)

Compatibility : Compatible with Apple devices only; iPhone and iPod touch models with iOS 15.0 or later; iPad models with iPadOS 15.0 or later;

iMac and MacBook with macOS 12.5 or later

Size : 86\*54\*2.5mm Weight : 10g

### CONTAINS:

1. SlimTag Pro Location Finder\*1
2. User Manual and Warranty Card\*1

### WARNING

1. Do not dismantle or modify the product;
2. Do not store the product in wet conditions;
3. Do not charge or use the product near heat sources;
4. Do not let water or any other liquid flows into the inside part of the product's interface. This would cause damages to the product;
5. Avoid direct sunlight;
6. Keep away from children and pets to prevent accidental ingestion;
7. Stop using the product if overheating occurs;
8. Please use a dry soft cloth to wipe, avoid using harsh chemicals or strong detergents.
9. Please visit [www.mangotek.com](http://www.mangotek.com) for latest product information.

### DISPOSAL OF DISCARDED ELECTRONIC PRODUCTS

1. Do not discard the electronic product as household waste;
2. Please dispose of discarded electronic products properly according to local regulations;
3. MangoTek encourages you to participate in electronics recycling program.

### WARRANTY CONDITIONS

1. Within 12 months from the date of purchase, if the product is damaged or faulty, and it is confirmed by our company's technician that it has caused under normal use, we will provide free maintenance services at the discretion of our company;
2. A valid warranty card and original purchase invoice must be presented upon request of warranty service. If the user cannot provide it, our company has the right not to provide maintenance services. Users may need to pay for related maintenance costs;
3. This warranty card will automatically become invalid if:
  - (a) it has explicitly modified or repaired in any way by persons other than technicians of our company, or;
  - (b) it has been damaged through illegal power connection; water and dirt seeping into the product or;
  - (c) losses or damages are caused by irresistible accidents or natural disasters or;
  - (d) the product exceeds the one-year effective warranty period.
4. No alteration to this warranty card will be allowed;
5. The free service provided by this warranty does not include product accessories and other packaging, gifts, etc;
6. The warranty terms and conditions are subject to change without prior notice;
7. Please retain your proof of purchase for warranty service;
8. Regarding the compatibility of MangoTek original products with your cell phone or electronic products, please confirm with the dealer before purchase. All designs and specifications are subject to change without notice;
9. Please visit [www.mangotek.com](http://www.mangotek.com) for latest product information.

To use the Apple Find My app to locate this item, the latest version of iOS, iPadOS, or macOS is recommended. The Find Items app on Apple Watch requires the latest version of watchOS.

Use of the Works with Apple badge means that a product has been designed to work specifically with the technology identified in the badge and has been certified by the product manufacturer to meet Apple Find My network product specifications and requirements. Apple is not responsible for the operation of this device or use of this product or its compliance with safety and regulatory standards.

Apple, Apple Find My, Apple Watch, Find My, iPhone, iPad, iPadOS, Mac, macOS and watchOS are trademarks of Apple Inc. iOS is a trademark or registered trademark of Cisco in the U.S. and other countries and is used under license.

### FCC Warning

This device complies with Part 15 of the FCC Rules. Operation is subject to the following two conditions:  
(1) This device may not cause harmful interference, and  
(2) this device must accept any interference received, including interference that may cause undesired operation.

NOTE 1: This equipment has been tested and found to comply with the limits for a Class B digital device, pursuant to part 15 of the FCC Rules. These limits are designed to provide reasonable protection against harmful interference in a residential installation. This equipment generates, uses and can radiate radio frequency energy and, if not installed and used in accordance with the instructions, may cause harmful interference to radio communications. However, there is no guarantee that interference will not occur in a particular installation. If this equipment does cause harmful interference to radio or television reception, which can be determined by turning the equipment off and on, the user is encouraged to try to correct the interference by one or more of the following measures:  
- Reorient or relocate the receiving antenna.  
- Increase the separation between the equipment and receiver.  
- Connect the equipment into an outlet on a circuit different from that to which the receiver is connected.  
- Consult the dealer or an experienced radio/TV technician for help.

NOTE 2: Any changes or modifications to this unit not expressly approved by the party responsible for compliance could void the user's authority to operate the equipment.

The device has been evaluated to meet general RF exposure requirement. The device can be used in portable exposure condition without restriction.