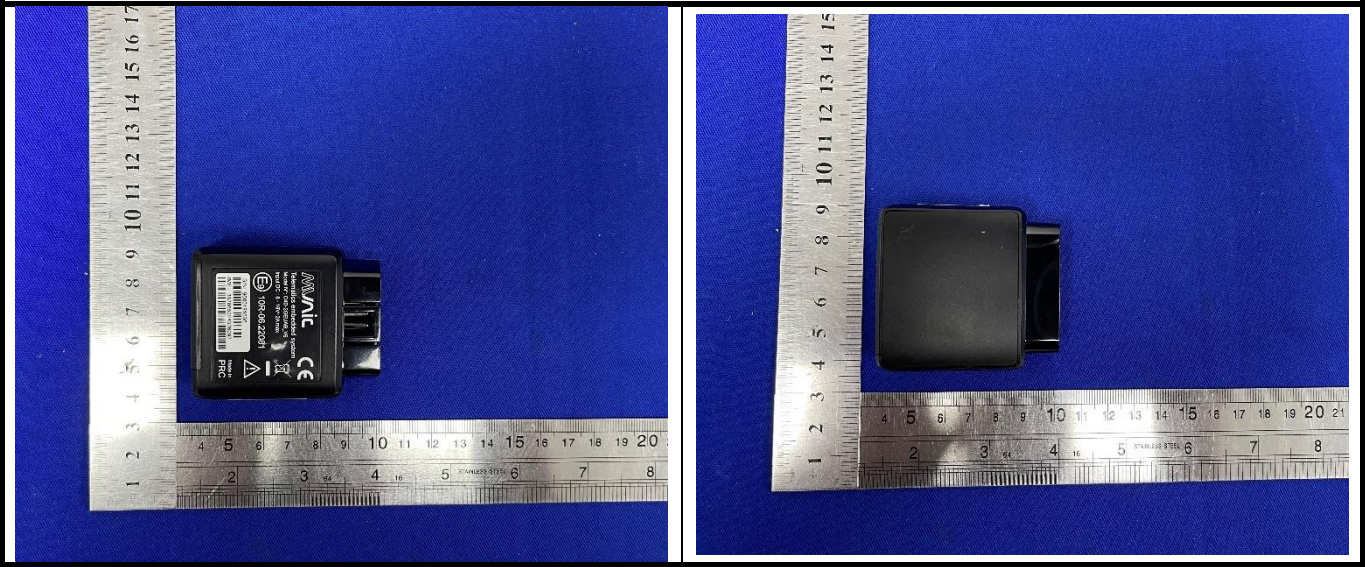
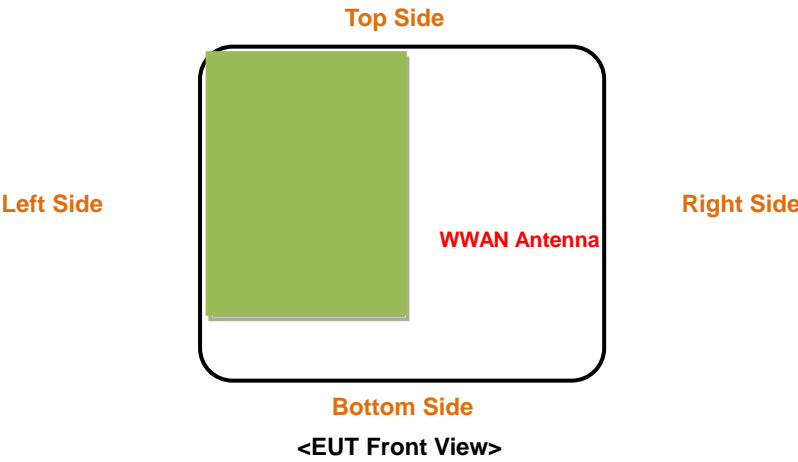


# FCC SAR Test Report

## <Photographs of EUT>



## <Antenna Location>



The separation distance for antenna to edge:

Antenna	To Top Side (mm)	To Bottom Side (mm)	To Left Side (mm)	To Right Side (mm)
WWAN	0	18	0	22

## FCC SAR Test Report

### <Photographs of SAR Setup>



**Front Face of EUT with 1.5 cm Gap**



**Rear Face of EUT with 1.5 cm Gap**



**Left Side of EUT with 1.5 cm Gap**



**Right Side of EUT with 1.5 cm Gap**



**Top Side of EUT with 1.5 cm Gap**