

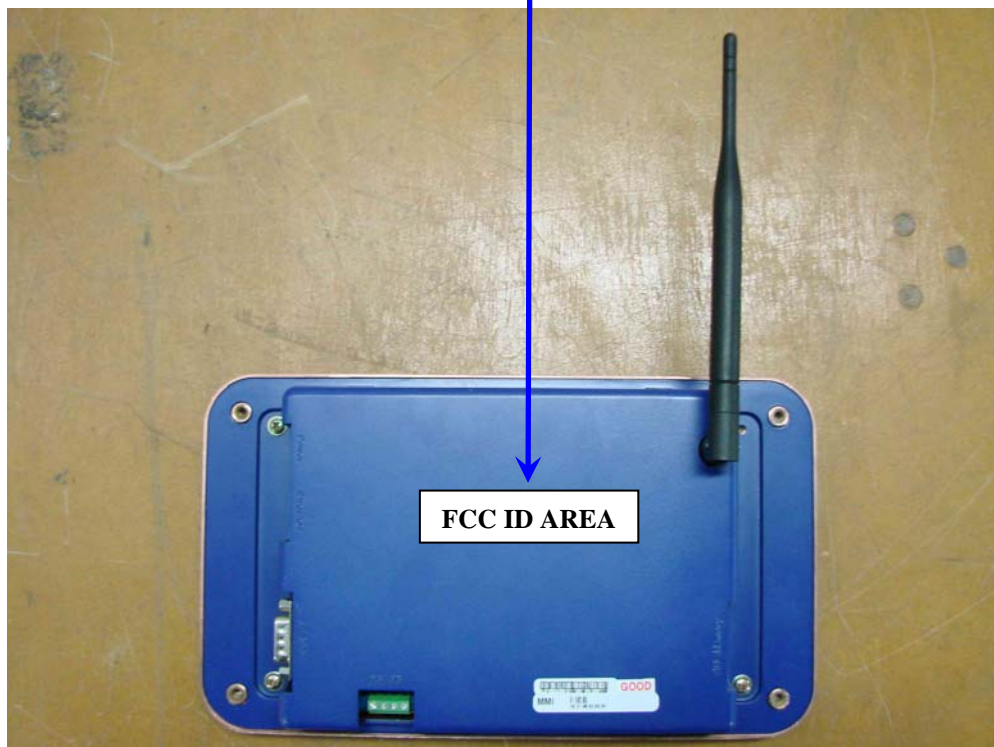
IDENTIFICATION LABEL:

PROPOSED FCC ID LABEL

The FCC ID shall be permanently affixed to the rear side or bottom side of the equipment

Because the equipment shall be inserted into the PV inverter with 2 different types, one is board type and the other one has enclosure without any modification.

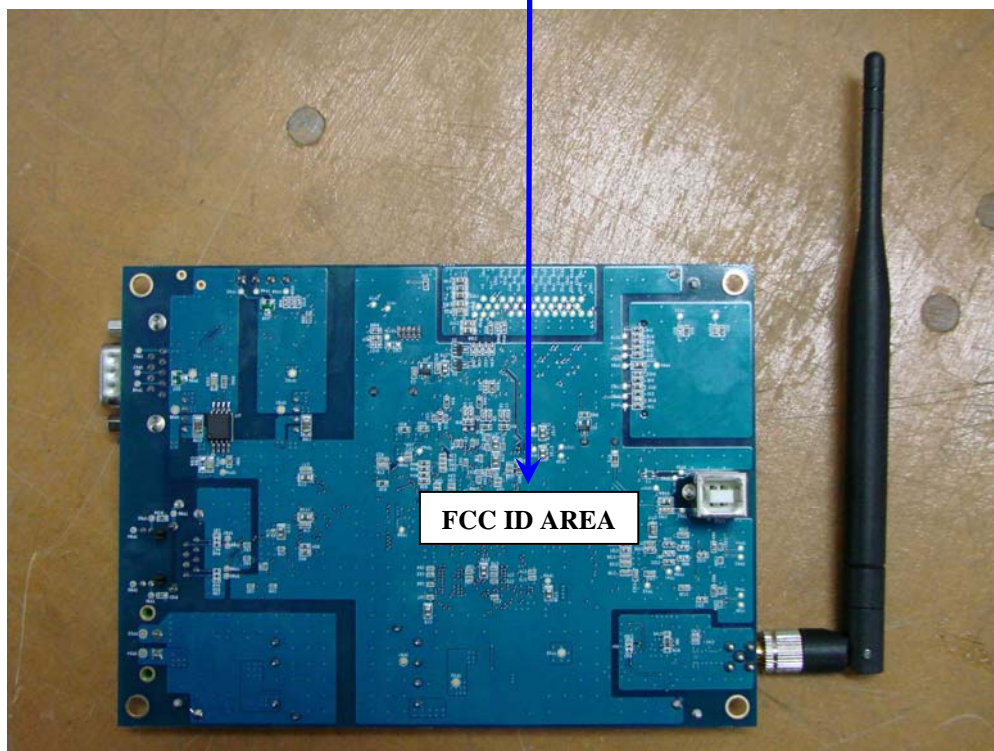
FCC ID : A5T-HMI
<p>This device complies with Part 15 of the FCC Rules. Operation is subject to the following two conditions: (1) this device may not cause harmful interference, and (2) this device must accept any interference received, including interference that may cause undesired operations.</p> <p>Made in Korea</p>



FCC ID : A5T-HMI

This device complies with Part 15 of the FCC Rules. Operation is subject to the following two conditions: (1) this device may not cause harmful interference, and (2) this device must accept any interference received, including interference that may cause undesired operations.

Made in Korea



FCC ID AREA