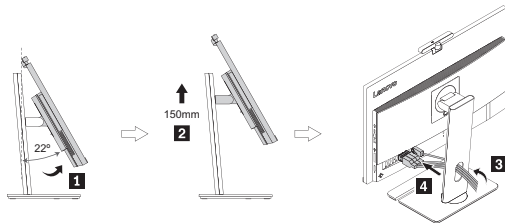
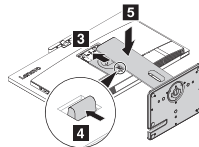
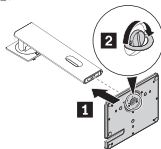
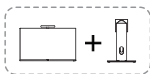


ThinkCentre M90a Pro Gen6

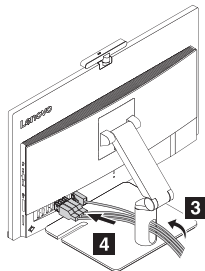
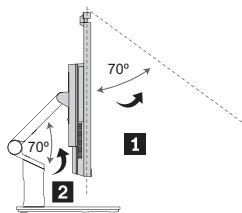
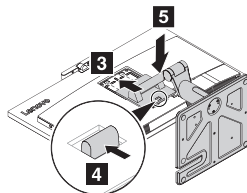
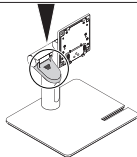
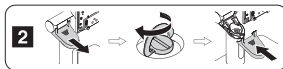
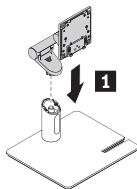
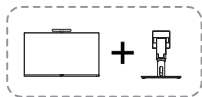


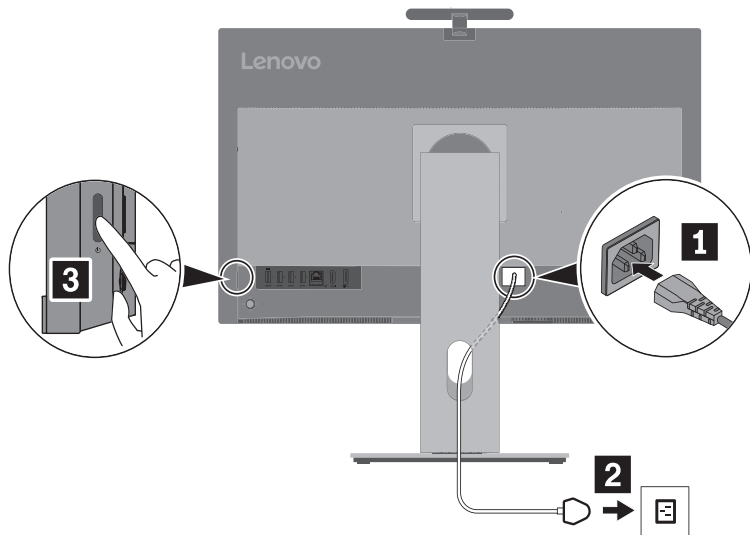
*

For selected models |
For selected models |
For selected models |
For selected models |
For selected models |
For selected models |
For selected models

i

Turn to *User Guide* for USB transfer rates and more product information. |
Turn to *User Guide* for USB transfer rates and more product information. |
Turn to *User Guide* for USB transfer rates and more product information. |
Turn to *User Guide* for USB transfer rates and more product information. |
Turn to *User Guide* for USB transfer rates and more product information. |
Turn to *User Guide* for USB transfer rates and more product information. |
Turn to *User Guide* for USB transfer rates and more product information.

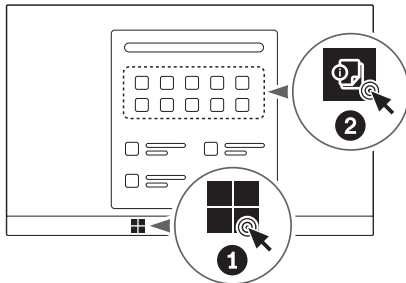






Access User Guide

Access User Guide | Access User Guide | Access User Guide | Access User Guide | Access User Guide | Access User Guide



FCC REGULATORY COMPLIANCE

Note: This equipment has been tested and found to comply with the limits for a Class B digital device, pursuant to part 15 of the FCC Rules. These limits are designed to provide reasonable protection against harmful interference in a residential installation. This equipment generates, uses and can radiate radio frequency energy and, if not installed and used in accordance with the instructions, may cause harmful interference to radio communications. However, there is no guarantee that interference will not occur in a particular installation. If this equipment does cause harmful interference to radio or television reception, which can be determined by turning the equipment off and on, the user is encouraged to try to correct the interference by one or more of the following measures:

- Reorient or relocate the receiving antenna.
- Increase the separation between the equipment and receiver.
- Connect the equipment into an outlet on a circuit different from that to which the receiver is connected.
- Consult the dealer or an experienced radio/TV technician for help.
- Changes or modifications not expressly approved by hp could void your authority to operate the equipment. This device complies with Part 15 of the FCC Rules. Operation is subject to the following 2 conditions:

1 These devices may not cause harmful interference.

2 These devices must accept any interference received, including interference that may cause undesired operation.

This equipment complies with RF radiation exposure limits set forth for an uncontrolled environment. This equipment should be installed and operated, keeping the radiator at least 20cm or more away from the person's body.

FCC ID:A5M-M90APG6F043

FCC RF Radiation Exposure Statement:

This Transmitter must not be co-located or operating in conjunction with any other antenna or transmitter.

EMC COMPLIANCE STATEMENT

Important: This device [and its power adapter] have demonstrated Electromagnetic Compatibility (EMC) compliance under conditions that included the use of compliant peripheral devices and shielded cables between system components. It is important that you use compliant peripheral devices and shielded cables between system components to reduce the possibility of causing interference to radios, televisions, and other electronic devices.

RADIO FREQUENCY EXPOSURE

This device meets the U.S. Federal Communications Commission's (FCC) requirements for exposure to radio waves and is designed and manufactured not to exceed the FCC's emission limits for exposure to radiofrequency (RF) energy. To comply with FCC RF exposure compliance requirements, this device must not be co-located or operating in conjunction with any other antenna or transmitter.

Innovation, Science and Economic Development (ISED) Canada Regulatory Compliance

C ID:5903G-M90APG6F043

INDUSTRY CANADA, CLASS B

This Class B digital apparatus complies with CAN ICES-003(B)/NMB-003(B).

Innovation, Science and Economic Development Canada (ISED Canada)/Innovation, Sciences et Développement économique Canada Industry Canada/Industrie

This device contains licence-exempt transmitter(s)/receiver(s) that comply with Innovation, Science and Economic Development Canada's licence-exempt RSS(s). Operation is subject to the following two conditions: (1) This device may not cause interference, and (2) This device must accept any interference, including interference that may cause undesired operation of the device.

L'émetteur/récepteur exempt de licence contenu dans le présent appareil est conforme aux CNR d'Innovation, Sciences et Développement économique Canada applicables aux appareils radio exempts de licence. L'exploitation est autorisée aux deux conditions suivantes : (1) l'appareil ne doit pas produire de brouillage, et (2) l'utilisateur de l'appareil doit accepter tout brouillage radioélectrique subi, même si le brouillage est susceptible d'en compromettre le fonctionnement.

Caution: Exposure to Radio Frequency Radiation

1. To comply with the Canadian RF exposure compliance requirements, this device and its antenna must not be co-located or operating in conjunction with any other antenna or transmitter.

Attention: exposition au rayonnement radiofréquence

1. Pour se conformer aux exigences de conformité RF canadienne l'exposition, cet appareil et son antenne ne doivent pas être co-localisés ou fonctionnant en conjonction avec une autre antenne ou transmetteur.

2. To comply with RSS 102 RF exposure compliance requirements, this equipment should be installed and operated, keeping the radiator at least 20cm or more away from the person's body.

2. Pour se conformer aux exigences de conformité CNR 102 RF exposition, cet équipement doit être installé et utilisé en maintenant le radiateur à au moins 20cm ou plus du corps de la personne.

CAN RSS-216 / CNR-216

	ThinkCentre M90a Pro Gen6
EUT Power Rating	Power form host device.
Modulation Technique	FMCW
Frequency Range	58-62GHz

For Barcode Position Only

Printed in China
PN: XXXXXXXXXX

First Edition (March 2025)
© Copyright Lenovo 2025.

Lenovo, Lenovo logo, ThinkCentre, and ThinkCentre logo are trademarks of Lenovo. DisplayPort is a trademark of the Video Electronics Standards Association. The terms HDMI and HDMI High-Definition Multimedia Interface are trademarks or registered trademarks of HDMI Licensing LLC in the United States and other countries. All other trademarks are the property of their respective owners.

LIMITED AND RESTRICTED RIGHTS NOTICE: If data or software is delivered pursuant to a General Services Administration "GSA" contract, use, reproduction, or disclosure is subject to restrictions set forth in Contract No. GS-35F-05925.

Reduce
Reuse
Recycle



For FSC Mix logo only