

BLUETOOTH® KEYBOARD WORKSTATION FOLIO with built-in-stand

COMPATIBLE WITH
iPad® / iPad®2



Operation Manual

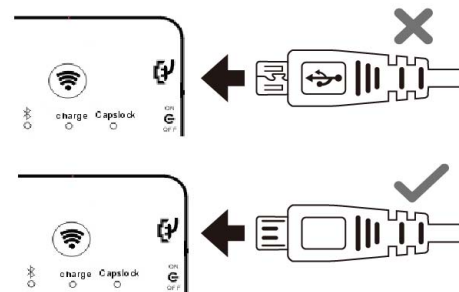
Thank you for purchasing the Bluetooth workstation. The soft-touch keyboard provides excellent key sensitivity. Please read this manual carefully before using this device. Store this in a safe location for future reference.

LED STATUS

*LED Blinking:	Keyboard is in pairing mode
Charge LED Blinking:	Currently charging when connected with USB cable
Charge LED Off:	Battery is fully charged
LED Blinking:	Low Battery
CAPS LOCK LED On:	CAPS LOCK is on

CHARGING THE BATTERY

1. For first time use, please charge the keyboard for at least 6 hours prior to using it. This is to fully maximize your lithium-ion battery. After doing so, each charge time should last roughly 2 hours when the battery runs low.
2. Your LED indicator light will blink when your battery is low.
3. Do not force the USB charging cable in to the port. When aligned correctly, it will slide in. Please refer to the images below.

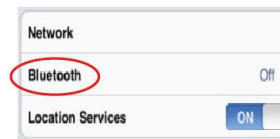
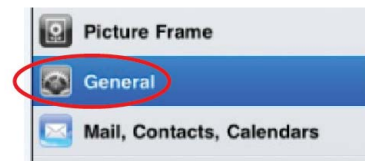


4. To charge the keyboard, connect the 5V DC input from the keyboard into a computer USB port with the enclosed charging cable. You can continue to use your keyboard while it is charging.

PAIRING YOUR KEYBOARD

Before you use your keyboard, you have to pair it with your iPad. Pairing allows your keyboard to communicate wirelessly with your iPad. You only have to pair the two devices once.

1. Turn the keyboard ON and press the "CONNECT" key on the keyboard.
2. The "*"led is blinking.
3. On your iPad, go to "SETTINGS" --> "GENERAL" --> "BLUETOOTH"



5. Slide the Bluetooth tab to the ON position. Your iPad will now begin to search for the Bluetooth keyboard automatically. When the Bluetooth Keyboard is found, it will appear in the list below.
6. Select "Bluetooth Keyboard" from the iPad screen.
7. A prompt will appear showing you a password.
8. Using your keyboard, type in the password shown on the screen and press the ENTER key on your keyboard.
9. Your Bluetooth Keyboard will now be paired with your iPad.



TROUBLESHOOTING

If the keyboard is not working, please check the following points:

1. Bluetooth is enabled on your iPad in Settings.
2. The Bluetooth Keyboard is within 33 feet of the iPad.
3. The password was entered correctly.

Try the following as basic solutions to your problem:

1. Restart the iPad or turn your Bluetooth Keyboard off and on.
2. Your battery may be low. Try charging it for an hour.
3. If you have accidentally pressed CONNECT on your keyboard while both devices are paired, you may need to re-pair the devices.

SPECIFICATIONS

Bluetooth:	V3.0 Class II
Frequency Range:	2.4GHz
Voltage:	3-5V
Operation Current:	<5mA
Standby Current:	2.5mA
Sleep Current:	<200UA

This device complies with Part 15 of the FCC Rules:

Operation is subject to the following two conditions:

1. This device may not cause harmful interference and
2. This device must accept any interference that is received, including any interference that may cause undesired operation.

FCC warning:

This device complies with Part 15 of the FCC Rules. Operation is subject to the following two conditions: (1) this device may not cause harmful interference, and (2) this device must accept any interference received, including interference that may cause undesired operation.

changes or modifications not expressly approved by the party responsible for compliance could void the user's authority to operate the equipment.

NOTE: This equipment has been tested and found to comply with the limits for a Class B digital device, pursuant to Part 15 of the FCC Rules. These limits are designed to provide reasonable protection against harmful interference in a residential installation. This equipment generates, uses and can radiate radio frequency energy and, if not installed and used in accordance with the instructions, may cause harmful interference to radio communications. However, there is no guarantee that interference will not occur in a particular installation. If this equipment does cause harmful interference to radio or television reception, which can be determined by turning the equipment off and on, the user is encouraged to try to correct the interference by one or more of the following measures:

- Reorient or relocate the receiving antenna.
- Increase the separation between the equipment and receiver.
- Connect the equipment into an outlet on a circuit different from that to which the receiver is connected.
- Consult the dealer or an experienced radio/TV technician for help.