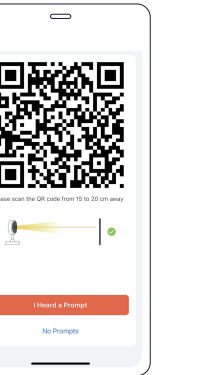


3. Please click Next, select a stable network and enter a password. The camera of the device scans the QR code generated by the mobile phone, keeps a distance of 15 to 20cm and does not move until the sound of “Di” is heard, and finally follows the steps on the App to complete the addition.

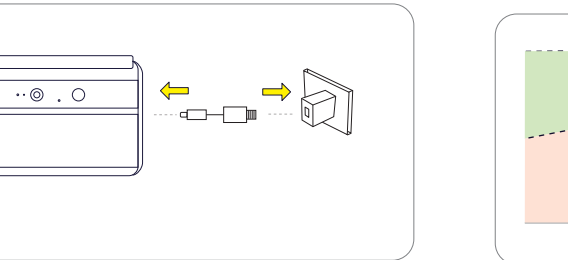


When adding devices, please make the camera and mobile phone connect to a same Wi-Fi router.

Mount Your Camera

Charging the camera

Fully charge before the first use.
Please use the 5V 1A power adapter.

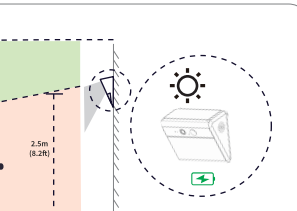


Select a location

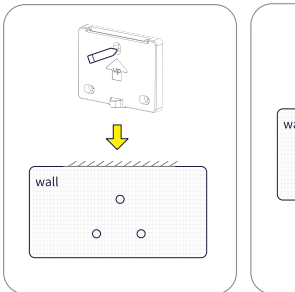
The camera can be mounted on a wall. Select a location where you can get the desired view and make sure the solar panel is fully exposed to direct sunlight.

Make sure to pick a place within range of your home network. Please try streaming video before you mount your camera.

We recommend hanging it 2.5m (8.2 ft) above the ground.

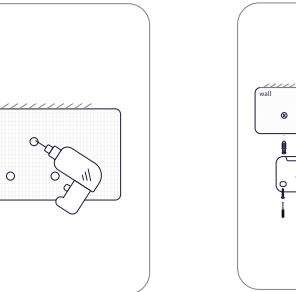


Mount the Camera



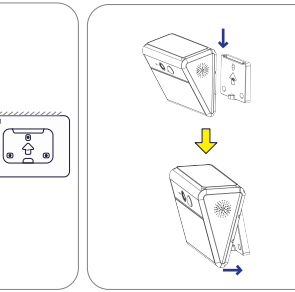
Step 1

Mark three mounting points on the wall or surface where drilling will be required, using the mounting base as a template.



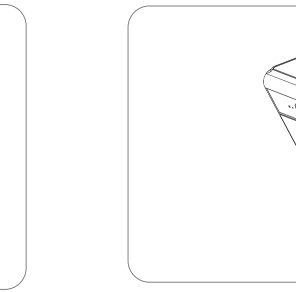
Step 2

Drill three holes above the mounting points.



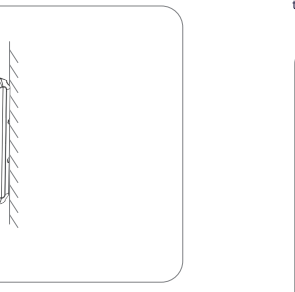
Step 3

Insert the expansion anchors into the holes and screw the mounting base onto the wall.



Step 4

Slot the camera onto the mounting base and press the camera to make sure it is attached securely with the base.

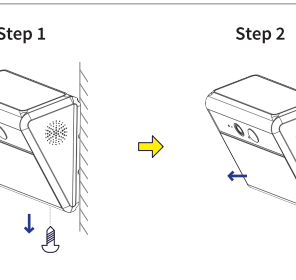


Step 5

Insert and tighten the camera fixing screw at the bottom of the camera.

How to remove the camera

Loosen the camera fixing screw at the bottom of the camera, and then directly pull out the camera.



Notice

FCC Radiation Exposure Statement:

This equipment complies with FCC radiation exposure limits set forth for an uncontrolled environment. This equipment should be installed and operated with minimum distance 20cm between the radiator & your body.

FCC Warning

This device complies with Part 15 of the FCC Rules. Operation is subject to the following two conditions:
(1) This device may not cause harmful interference, and (2) this device must accept any interference received, including interference that may cause undesired operation.

Note: This equipment has been tested and found to comply with the limits for a Class B digital device, pursuant to part 15 of the FCC Rules. These limits are designed to provide reasonable protection against harmful interference in a residential installation. This equipment generates, uses and can radiate radio frequency energy and, if not installed and used in accordance with the instructions, may cause harmful interference to radio communications. However, there is no guarantee that interference will not occur in a particular installation. If this equipment does cause harmful interference to radio or television reception, which can be determined by turning the equipment off and on, the user is encouraged to try to correct the interference by one or more of the following measures:

—Reorient or relocate the receiving antenna.

—Increase the separation between the equipment and receiver.

—Connect the equipment into an outlet on a circuit different from that to which the receiver is connected.

—Consult the dealer or an experienced radio/TV technician for help.

NOTE 2: Any changes or modifications to this unit not expressly approved by the party responsible for compliance could void the user's authority to operate the equipment.

Customer Service

Warranty

12-month Limited Warranty