

Date: 2025-03-21

#01_WLAN2.4GHz_802.11b 1Mbps_Front_10mm_Ch11

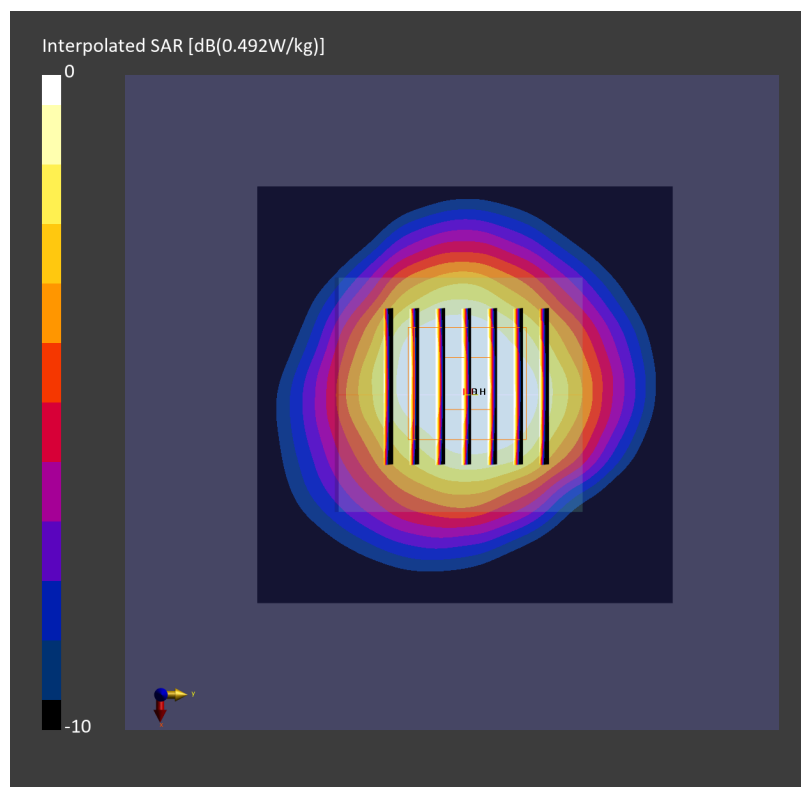
Communication System: IEEE 802.11b WiFi 2.4 GHz; Frequency: 2462.000 MHz
Medium: HSL_2450_250321 Medium parameters used: $f = 2462.000$ MHz; $\sigma = 1.84$ S/m; $\epsilon_r = 39.0$
Ambient Temperature: 23.1°C; Liquid Temperature: 22.1°C

DASY8 Configuration:

- Probe: EX3DV4 - SN7785; ConvF(6.25, 6.58, 6.44); Calibrated: 2024-11-28
- Sensor-Surface: 1.4 mm
- Electronics: DAE4 Sn1694; Calibrated: 2024-11-19
- Phantom: Twin-SAM V8.0 (30deg probe tilt); Serial: 2126; Section: Flat
- Measurement Software: 16.2.4.2524
- UID: WLAN, 10415-AAA

Area Scan (80.0 mm x 80.0 mm): Measurement Grid: 10.0 mm x 10.0 mm
SAR (1g) = 0.473 W/kg; SAR (10g) = 0.257 W/kg;

Zoom Scan (30.0 mm x 30.0 mm x 30.0 mm): Measurement Grid: 5.0 mm x 5.0 mm x 1.5 mm
Power Drift = -0.02 dB
SAR (1g) = 0.492 W/kg; SAR (8g) = 0.309 W/kg; SAR (10g) = 0.287 W/kg
Smallest distance from peaks to all points 3 dB below = 15.7 mm
Ratio of SAR at M2 to SAR at M1 = 85.7 %



Date: 2025-03-21

#02_WLAN5GHz_802.11a 6Mbps_Front_10mm_Ch52

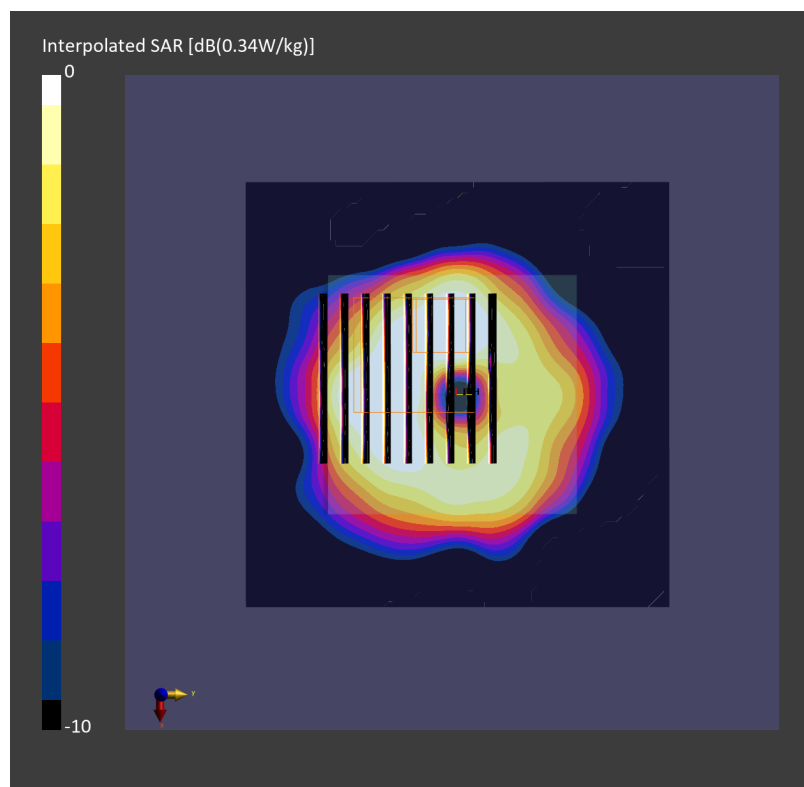
Communication System: IEEE 802.11a/h WiFi 5 GHz; Frequency: 5260.000 MHz
Medium: HSL_5G_250321 Medium parameters used: $f = 5260.000$ MHz; $\sigma = 4.69$ S/m; $\epsilon_r = 36.5$
Ambient Temperature: 23.1°C; Liquid Temperature: 22.1°C

DASY8 Configuration:

- Probe: EX3DV4 - SN7785; ConvF(4.72, 4.97, 4.86); Calibrated: 2024-11-28
- Sensor-Surface: 1.4 mm
- Electronics: DAE4 Sn1694; Calibrated: 2024-11-19
- Phantom: Twin-SAM V8.0 (30deg probe tilt); Serial: 2126; Section: Flat
- Measurement Software: 16.2.4.2524
- UID: WLAN, 10062-CAE

Area Scan (80.0 mm x 80.0 mm): Measurement Grid: 10.0 mm x 10.0 mm
SAR (1g) = 0.294 W/kg; SAR (10g) = 0.112 W/kg;

Zoom Scan (22.0 mm x 22.0 mm x 22.0 mm): Measurement Grid: 4.0 mm x 4.0 mm x 1.4 mm
Power Drift = 0.01 dB
SAR (1g) = 0.340 W/kg; SAR (8g) = 0.129 W/kg; SAR (10g) = 0.116 W/kg
Smallest distance from peaks to all points 3 dB below = 3.2 mm
Ratio of SAR at M2 to SAR at M1 = 62.6 %



Date: 2025-03-21

#03_WLAN5GHz_802.11a_6Mbps_Front_10mm_Ch100

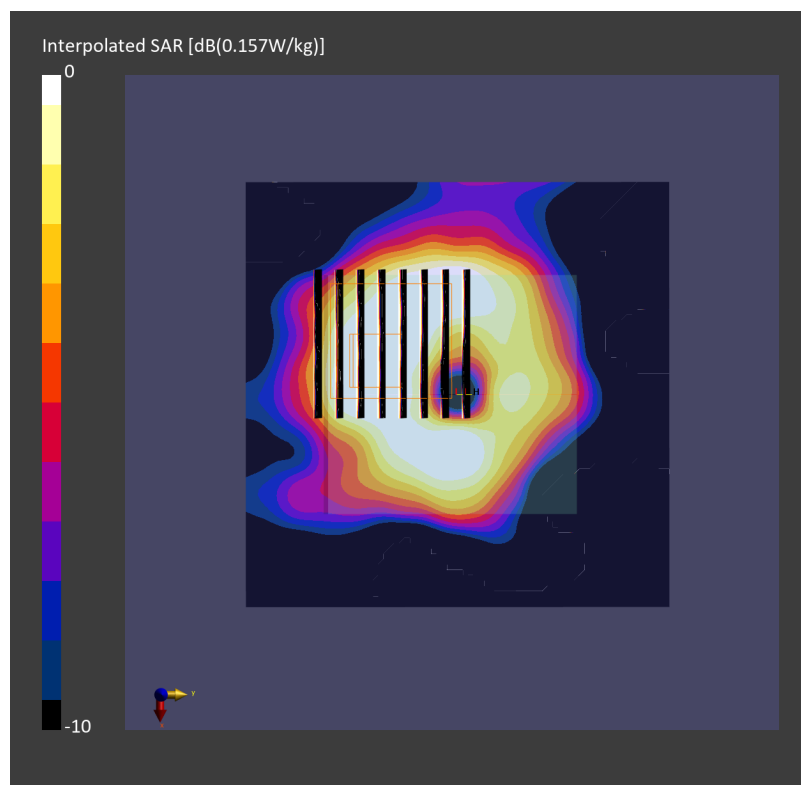
Communication System: IEEE 802.11a/h WiFi 5 GHz; Frequency: 5500.000 MHz
Medium: HSL_5G_250321 Medium parameters used: $f = 5500.000$ MHz; $\sigma = 4.93$ S/m; $\epsilon_r = 36.2$
Ambient Temperature: 23.1°C; Liquid Temperature: 22.1°C

DASY8 Configuration:

- Probe: EX3DV4 - SN7785; ConvF(4.35, 4.58, 4.49); Calibrated: 2024-11-28
- Sensor-Surface: 1.4 mm
- Electronics: DAE4 Sn1694; Calibrated: 2024-11-19
- Phantom: Twin-SAM V8.0 (30deg probe tilt); Serial: 2126; Section: Flat
- Measurement Software: 16.2.4.2524
- UID: WLAN, 10062-CAE

Area Scan (80.0 mm x 80.0 mm): Measurement Grid: 10.0 mm x 10.0 mm
SAR (1g) = 0.145 W/kg; SAR (10g) = 0.056 W/kg;

Zoom Scan (22.0 mm x 22.0 mm x 22.0 mm): Measurement Grid: 4.0 mm x 4.0 mm x 1.4 mm
Power Drift = 0.10 dB
SAR (1g) = 0.157 W/kg; SAR (8g) = 0.061 W/kg; SAR (10g) = 0.053 W/kg
Smallest distance from peaks to all points 3 dB below = 6.4 mm
Ratio of SAR at M2 to SAR at M1 = 62.6 %



Date: 2025-03-21

#04_WLAN5GHz_802.11a 6Mbps_Front_10mm_Ch149

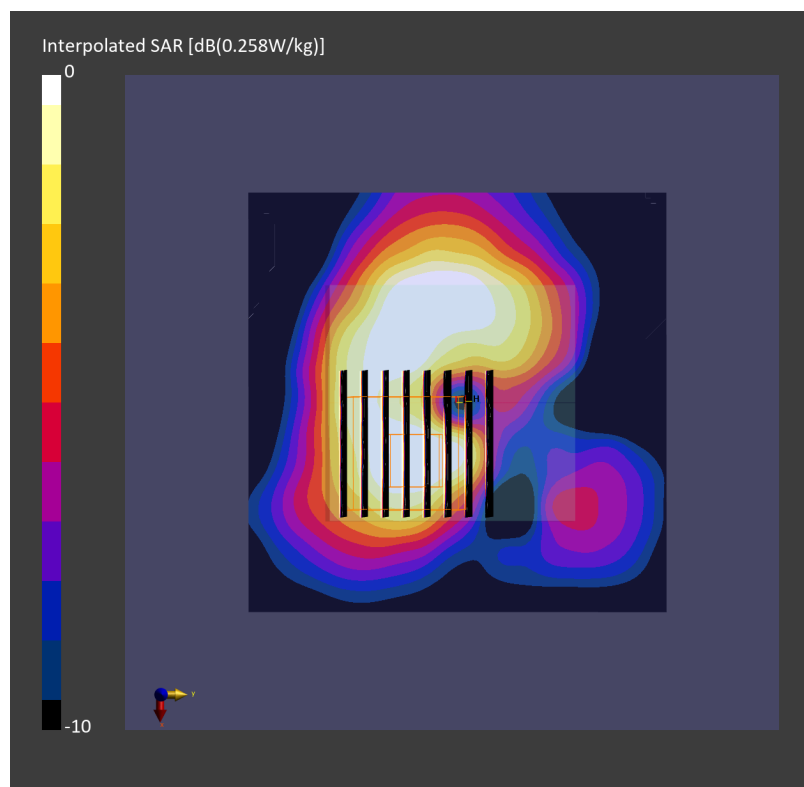
Communication System: IEEE 802.11a/h WiFi 5 GHz; Frequency: 5745.000 MHz
Medium: HSL_5G_250321 Medium parameters used: $f = 5745.000$ MHz; $\sigma = 5.19$ S/m; $\epsilon_r = 35.8$
Ambient Temperature: 23.1°C; Liquid Temperature: 22.1°C

DASY8 Configuration:

- Probe: EX3DV4 - SN7785; ConvF(4.37, 4.6, 4.5); Calibrated: 2024-11-28
- Sensor-Surface: 1.4 mm
- Electronics: DAE4 Sn1694; Calibrated: 2024-11-19
- Phantom: Twin-SAM V8.0 (30deg probe tilt); Serial: 2126; Section: Flat
- Measurement Software: 16.2.4.2524
- UID: WLAN, 10062-CAE

Area Scan (80.0 mm x 80.0 mm): Measurement Grid: 10.0 mm x 10.0 mm
SAR (1g) = 0.235 W/kg; SAR (10g) = 0.086 W/kg;

Zoom Scan (22.0 mm x 22.0 mm x 22.0 mm): Measurement Grid: 4.0 mm x 4.0 mm x 1.4 mm
Power Drift = -0.08 dB
SAR (1g) = 0.258 W/kg; SAR (8g) = 0.095 W/kg; SAR (10g) = 0.082 W/kg
Smallest distance from peaks to all points 3 dB below = 7.9 mm
Ratio of SAR at M2 to SAR at M1 = 58.2 %



Date: 2025-03-21

#05_WLAN5GHz_802.11a_6Mbps_Front_10mm_Ch173

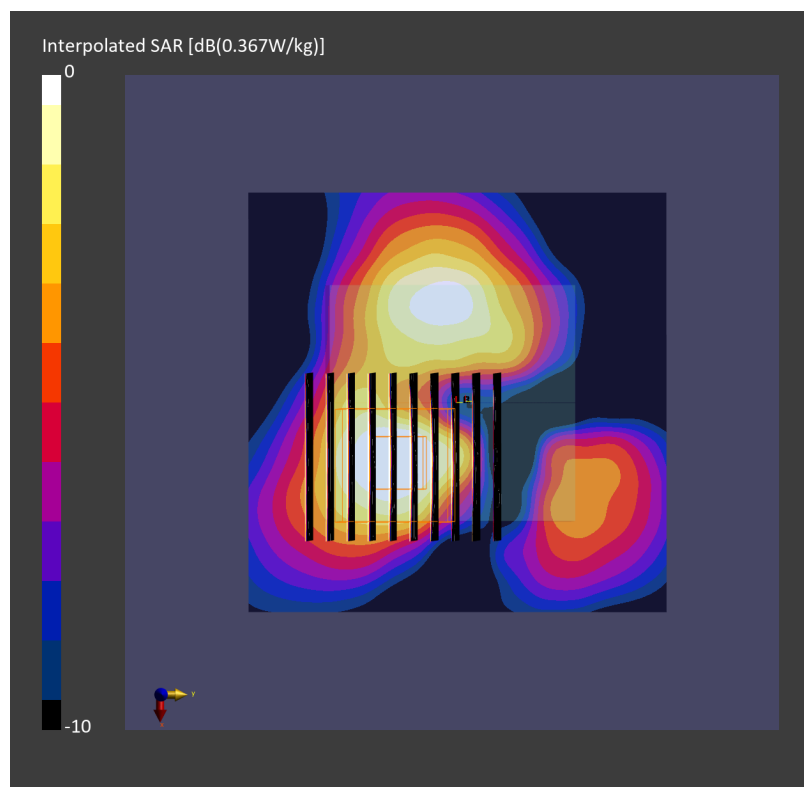
Communication System: IEEE 802.11a/h WiFi 5 GHz; Frequency: 5865.000 MHz
Medium: HSL_5G_250321 Medium parameters used: $f = 5865.000$ MHz; $\sigma = 5.32$ S/m; $\epsilon_r = 35.6$
Ambient Temperature: 23.1°C; Liquid Temperature: 22.1°C

DASY8 Configuration:

- Probe: EX3DV4 - SN7785; ConvF(4.37, 4.6, 4.5); Calibrated: 2024-11-28
- Sensor-Surface: 1.4 mm
- Electronics: DAE4 Sn1694; Calibrated: 2024-11-19
- Phantom: Twin-SAM V8.0 (30deg probe tilt); Serial: 2126; Section: Flat
- Measurement Software: 16.2.4.2524
- UID: WLAN, 10062-CAE

Area Scan (80.0 mm x 80.0 mm): Measurement Grid: 10.0 mm x 10.0 mm
SAR (1g) = 0.327 W/kg; SAR (10g) = 0.111 W/kg;

Zoom Scan (22.0 mm x 22.0 mm x 22.0 mm): Measurement Grid: 4.0 mm x 4.0 mm x 1.4 mm
Power Drift = 0.05 dB
SAR (1g) = 0.367 W/kg; SAR (8g) = 0.139 W/kg; SAR (10g) = 0.121 W/kg
Smallest distance from peaks to all points 3 dB below = 8.2 mm
Ratio of SAR at M2 to SAR at M1 = 59.5 %



Date: 2025-03-21

#06_Bluetooth_1Mbps_Front_10mm_Ch0

Communication System: IEEE 802.15.1 Bluetooth; Frequency: 2402.000 MHz
Medium: HSL_2450_250321 Medium parameters used: $f=2402.000$ MHz; $\sigma=1.78$ S/m; $\epsilon_r=39.2$
Ambient Temperature: 23.1°C; Liquid Temperature: 22.1°C

DASY8 Configuration:

- Probe: EX3DV4 - SN7785; ConvF(6.25, 6.58, 6.44); Calibrated: 2024-11-28
- Sensor-Surface: 1.4 mm
- Electronics: DAE4 Sn1694; Calibrated: 2024-11-19
- Phantom: Twin-SAM V8.0 (30deg probe tilt); Serial: 2126; Section: Flat
- Measurement Software: 16.2.4.2524
- UID: Bluetooth, 10032-CAA

Area Scan (80.0 mm x 80.0 mm): Measurement Grid: 10.0 mm x 10.0 mm

SAR (1g) = 0.071 W/kg; SAR (10g) = 0.039 W/kg;

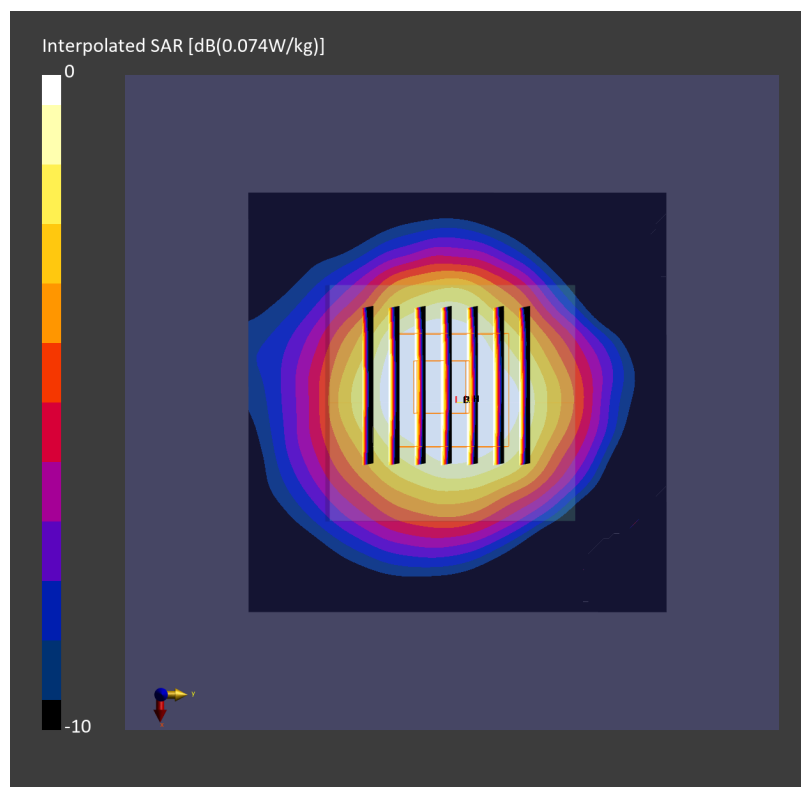
Zoom Scan (30.0 mm x 30.0 mm x 30.0 mm): Measurement Grid: 5.0 mm x 5.0 mm x 1.5 mm

Power Drift = -0.14 dB

SAR (1g) = 0.061 W/kg; SAR (8g) = 0.039 W/kg; SAR (10g) = 0.035 W/kg

Smallest distance from peaks to all points 3 dB below = 12.4 mm

Ratio of SAR at M2 to SAR at M1 = 88.1 %



Date: 2025-03-21

#07_WLAN2.4GHz_802.11b 1Mbps_Back_0mm_Ch11

Communication System: IEEE 802.11b WiFi 2.4 GHz; Frequency: 2462.000 MHz
Medium: HSL_2450_250321 Medium parameters used: $f=2462.000$ MHz; $\sigma=1.84$ S/m; $\epsilon_r=39.0$
Ambient Temperature: 23.1°C; Liquid Temperature: 22.1°C

DASY8 Configuration:

- Probe: EX3DV4 - SN7785; ConvF(6.25, 6.58, 6.44); Calibrated: 2024-11-28
- Sensor-Surface: 1.4 mm
- Electronics: DAE4 Sn1694; Calibrated: 2024-11-19
- Phantom: Twin-SAM V8.0 (30deg probe tilt); Serial: 2126; Section: Flat
- Measurement Software: 16.2.4.2524
- UID: WLAN, 10415-AAA

Area Scan (80.0 mm x 80.0 mm): Measurement Grid: 10.0 mm x 10.0 mm

SAR (1g) = 0.125 W/kg; SAR (10g) = 0.059 W/kg;

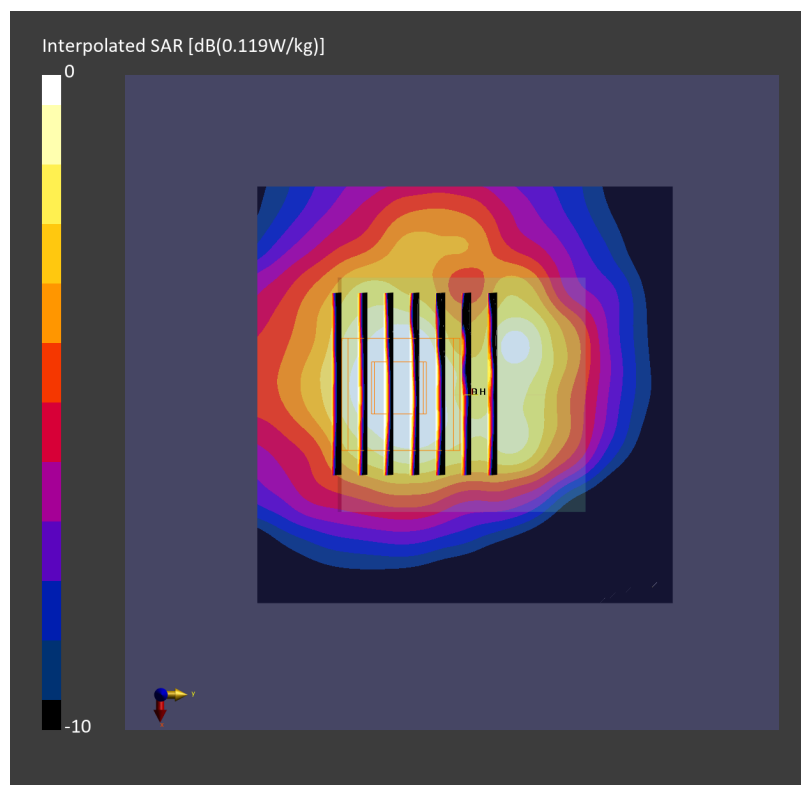
Zoom Scan (30.0 mm x 30.0 mm x 30.0 mm): Measurement Grid: 5.0 mm x 5.0 mm x 1.5 mm

Power Drift = 0.06 dB

SAR (1g) = 0.086 W/kg; SAR (8g) = 0.045 W/kg; SAR (10g) = 0.041 W/kg

Smallest distance from peaks to all points 3 dB below = 9.1 mm

Ratio of SAR at M2 to SAR at M1 = 93.4 %



Date: 2025-03-21

#08_WLAN5GHz_802.11a_6Mbps_Back_0mm_Ch52

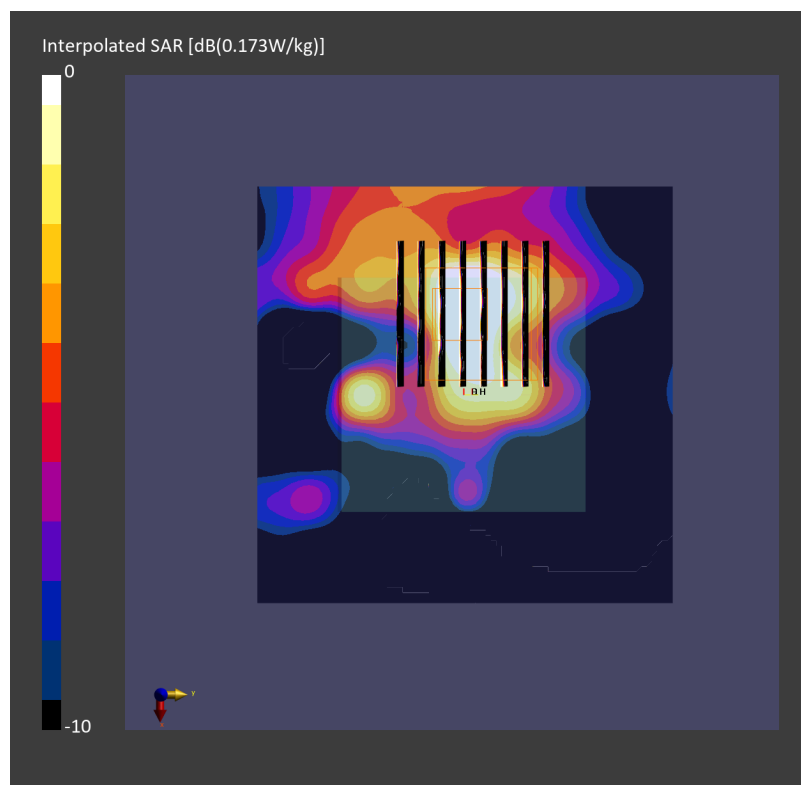
Communication System: IEEE 802.11a/h WiFi 5 GHz; Frequency: 5260.000 MHz
Medium: HSL_5G_250321 Medium parameters used: $f = 5260.000$ MHz; $\sigma = 4.69$ S/m; $\epsilon_r = 36.5$
Ambient Temperature: 23.1°C; Liquid Temperature: 22.1°C

DASY8 Configuration:

- Probe: EX3DV4 - SN7785; ConvF(4.72, 4.97, 4.86); Calibrated: 2024-11-28
- Sensor-Surface: 1.4 mm
- Electronics: DAE4 Sn1694; Calibrated: 2024-11-19
- Phantom: Twin-SAM V8.0 (30deg probe tilt); Serial: 2126; Section: Flat
- Measurement Software: 16.2.4.2524
- UID: WLAN, 10062-CAE

Area Scan (80.0 mm x 80.0 mm): Measurement Grid: 10.0 mm x 10.0 mm
SAR (1g) = 0.181 W/kg; SAR (10g) = 0.058 W/kg;

Zoom Scan (22.0 mm x 22.0 mm x 22.0 mm): Measurement Grid: 4.0 mm x 4.0 mm x 1.4 mm
Power Drift = 0.04 dB
SAR (1g) = 0.173 W/kg; SAR (8g) = 0.052 W/kg; SAR (10g) = 0.045 W/kg
Smallest distance from peaks to all points 3 dB below = 4.7 mm
Ratio of SAR at M2 to SAR at M1 = 55.6 %



Date: 2025-03-21

#09_WLAN5GHz_802.11a_6Mbps_Back_0mm_Ch100

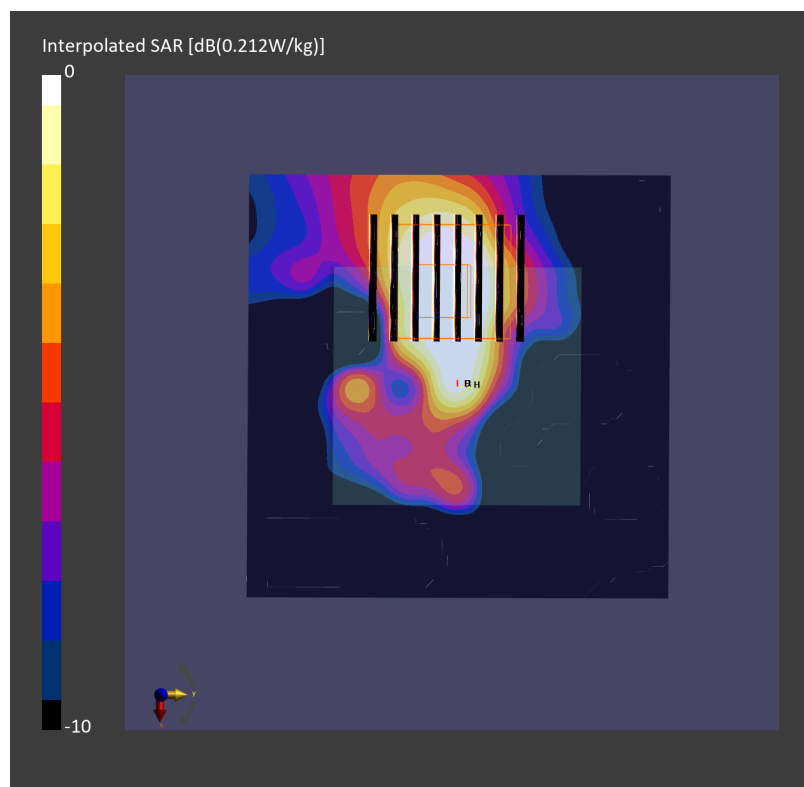
Communication System: IEEE 802.11a/h WiFi 5 GHz; Frequency: 5500.000 MHz
Medium: HSL_5G_250321 Medium parameters used: $f = 5500.000$ MHz; $\sigma = 4.93$ S/m; $\epsilon_r = 36.2$
Ambient Temperature: 23.1°C; Liquid Temperature: 22.1°C

DASY8 Configuration:

- Probe: EX3DV4 - SN7785; ConvF(4.35, 4.58, 4.49); Calibrated: 2024-11-28
- Sensor-Surface: 1.4 mm
- Electronics: DAE4 Sn1694; Calibrated: 2024-11-19
- Phantom: Twin-SAM V8.0 (30deg probe tilt); Serial: 2126; Section: Flat
- Measurement Software: 16.2.4.2524
- UID: WLAN, 10062-CAE

Area Scan (80.0 mm x 80.0 mm): Measurement Grid: 10.0 mm x 10.0 mm
SAR (1g) = 0.189 W/kg; SAR (10g) = 0.057 W/kg;

Zoom Scan (22.0 mm x 22.0 mm x 22.0 mm): Measurement Grid: 4.0 mm x 4.0 mm x 1.4 mm
Power Drift = -0.05 dB
SAR (1g) = 0.172 W/kg; SAR (8g) = 0.054 W/kg; SAR (10g) = 0.044 W/kg
Smallest distance from peaks to all points 3 dB below = 6.4 mm
Ratio of SAR at M2 to SAR at M1 = 62.0 %



Date: 2025-03-21

#10_WLAN5GHz_802.11a 6Mbps_Back_0mm_Ch149

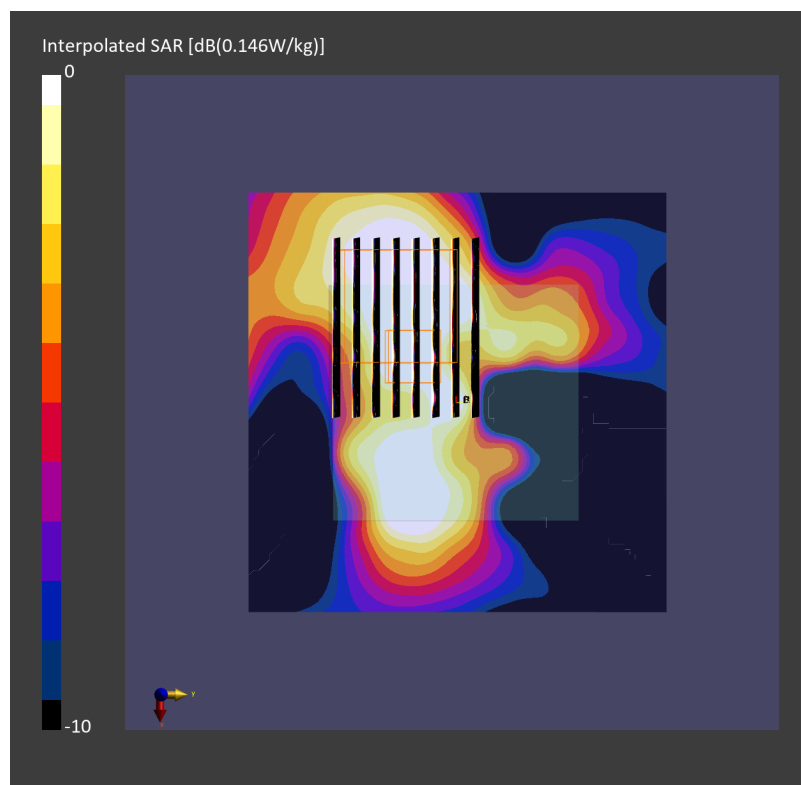
Communication System: IEEE 802.11a/h WiFi 5 GHz; Frequency: 5745.000 MHz
Medium: HSL_5G_250321 Medium parameters used: $f = 5745.000$ MHz; $\sigma = 5.19$ S/m; $\epsilon_r = 35.8$
Ambient Temperature: 23.1°C; Liquid Temperature: 22.1°C

DASY8 Configuration:

- Probe: EX3DV4 - SN7785; ConvF(4.37, 4.6, 4.5); Calibrated: 2024-11-28
- Sensor-Surface: 1.4 mm
- Electronics: DAE4 Sn1694; Calibrated: 2024-11-19
- Phantom: Twin-SAM V8.0 (30deg probe tilt); Serial: 2126; Section: Flat
- Measurement Software: 16.2.4.2524
- UID: WLAN, 10062-CAE

Area Scan (80.0 mm x 80.0 mm): Measurement Grid: 10.0 mm x 10.0 mm
SAR (1g) = 0.143 W/kg; SAR (10g) = 0.049 W/kg;

Zoom Scan (22.0 mm x 22.0 mm x 22.0 mm): Measurement Grid: 3.8 mm x 3.8 mm x 1.4 mm
Power Drift = -0.06 dB
SAR (1g) = 0.126 W/kg; SAR (8g) = 0.043 W/kg; SAR (10g) = 0.037 W/kg
Smallest distance from peaks to all points 3 dB below = 3.9 mm
Ratio of SAR at M2 to SAR at M1 = 51.2 %



Date: 2025-03-21

#11_WLAN5GHz_802.11a 6Mbps_Back_0mm_Ch173

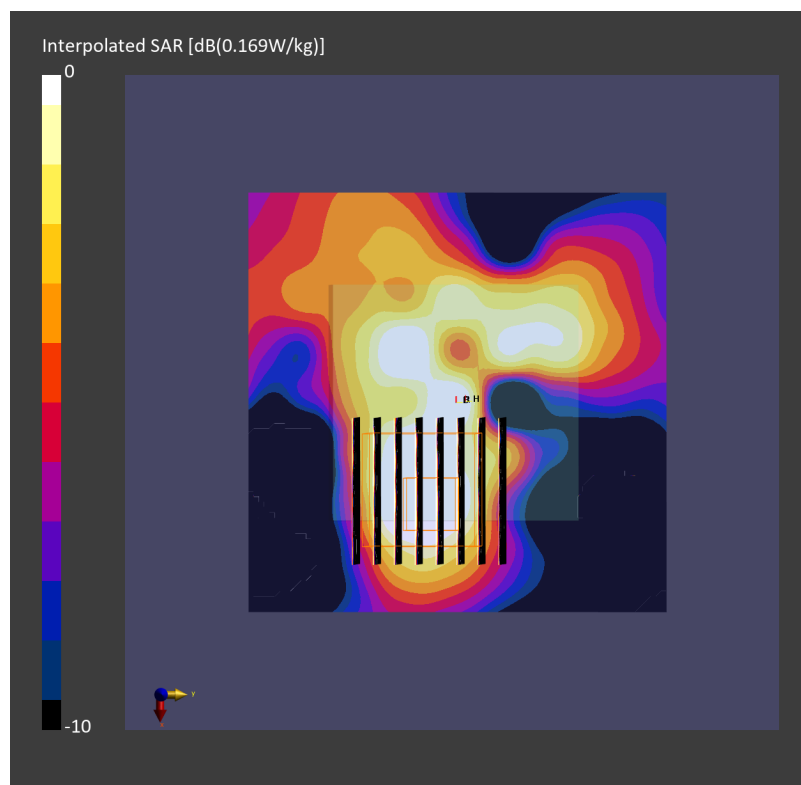
Communication System: IEEE 802.11a/h WiFi 5 GHz; Frequency: 5865.000 MHz
Medium: HSL_5G_250321 Medium parameters used: $f = 5865.000$ MHz; $\sigma = 5.32$ S/m; $\epsilon_r = 35.6$
Ambient Temperature: 23.1°C; Liquid Temperature: 22.1°C

DASY8 Configuration:

- Probe: EX3DV4 - SN7785; ConvF(4.37, 4.6, 4.5); Calibrated: 2024-11-28
- Sensor-Surface: 1.4 mm
- Electronics: DAE4 Sn1694; Calibrated: 2024-11-19
- Phantom: Twin-SAM V8.0 (30deg probe tilt); Serial: 2126; Section: Flat
- Measurement Software: 16.2.4.2524
- UID: WLAN, 10062-CAE

Area Scan (80.0 mm x 80.0 mm): Measurement Grid: 10.0 mm x 10.0 mm
SAR (1g) = 0.173 W/kg; SAR (10g) = 0.063 W/kg;

Zoom Scan (24.0 mm x 24.0 mm x 22.0 mm): Measurement Grid: 4.0 mm x 4.0 mm x 1.4 mm
Power Drift = 0.09 dB
SAR (1g) = 0.169 W/kg; SAR (8g) = 0.058 W/kg; SAR (10g) = 0.050 W/kg
Smallest distance from peaks to all points 3 dB below = 6.4 mm
Ratio of SAR at M2 to SAR at M1 = 59.1 %



Date: 2025-03-21

#12_Bluetooth_1Mbps_Back_0mm_Ch0

Communication System: IEEE 802.15.1 Bluetooth; Frequency: 2402.000 MHz
Medium: HSL_2450_250321 Medium parameters used: $f=2402.000$ MHz; $\sigma=1.78$ S/m; $\epsilon_r=39.2$
Ambient Temperature: 23.1°C; Liquid Temperature: 22.1°C

DASY8 Configuration:

- Probe: EX3DV4 - SN7785; ConvF(6.25, 6.58, 6.44); Calibrated: 2024-11-28
- Sensor-Surface: 1.4 mm
- Electronics: DAE4 Sn1694; Calibrated: 2024-11-19
- Phantom: Twin-SAM V8.0 (30deg probe tilt); Serial: 2126; Section: Flat
- Measurement Software: 16.2.4.2524
- UID: Bluetooth, 10032-CAA

Area Scan (80.0 mm x 80.0 mm): Measurement Grid: 10.0 mm x 10.0 mm
SAR (1g) = 0.024 W/kg; SAR (10g) = 0.011 W/kg;

Zoom Scan (30.0 mm x 30.0 mm x 30.0 mm): Measurement Grid: 5.0 mm x 5.0 mm x 1.5 mm
Power Drift = 0.09 dB
SAR (1g) = 0.020 W/kg; SAR (8g) = 0.011 W/kg; SAR (10g) = 0.009 W/kg
Smallest distance from peaks to all points 3 dB below = 9.5 mm
Ratio of SAR at M2 to SAR at M1 = 92.6 %

