

# Power Density Simulation Report

FCC ID: A4RG1MNW

05/08/2023

Google LLC

## Table of Content

### [1. Numerical modeling for Power Density \(PD\) calculations](#)

#### [1.1 Full-wave numerical computation tool](#)

#### [1.2 Full-wave simulation setup](#)

##### [1.2.1 Simulation model](#)

##### [1.2.2 Mesh settings and solution setup](#)

##### [1.2.3 Time-averaged PD calculation](#)

### [2. Simulation and modeling validation](#)

#### [2.1 Comparison between simulation and measurement](#)

#### [2.2 Calculated PD per beam ID](#)

### [3. References](#)

# 1. Numerical modeling for Power Density (PD) calculations

## 1.1 Full-wave numerical computation tool

To calculate the Power Density (PD) of the phone at FR2 frequencies, a commercial software called HFSS [1], which is a part of ANSYS Electronics Desktop 2022 R1 package, is used. This software is a 3D full-wave electromagnetic (EM) computational solver based on Finite Element Method (FEM).

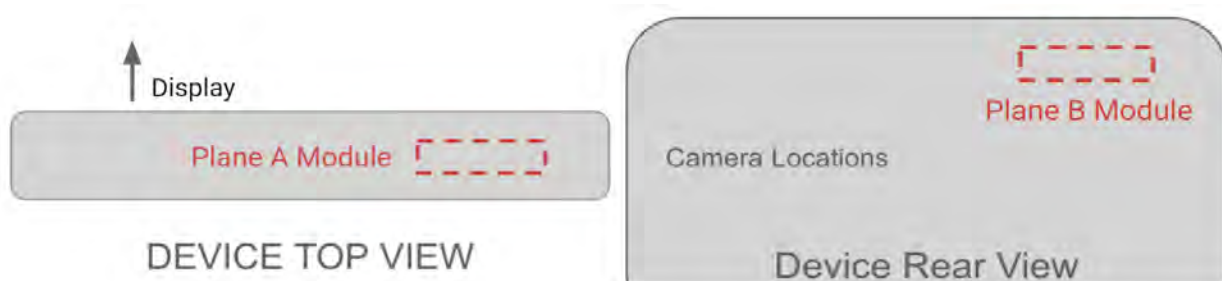
## 1.2 Full-wave simulation setup

### 1.2.1 Simulation model

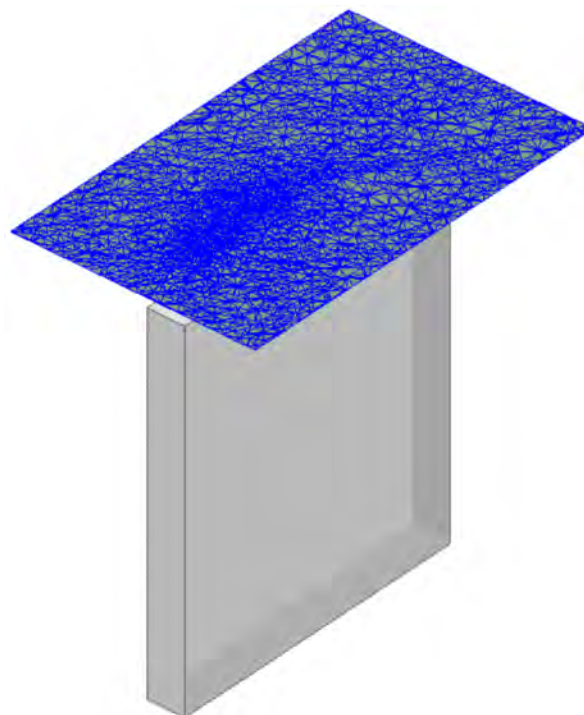
The device includes one L-shaped mmWave module that consists of Plane A sub-module (Plane A Module) and Plane B sub-module (Plane B Module), located at the top and the back side of the device, respectively, as shown in Figure 1-1. In order to obtain accurate PD calculations, it is necessary to have accurate modeling of the mmWave antennas, as well as all other components of the device in close proximity to the mmWave antennas. The simulation model therefore must include all components of the device located within a distance of at least one wavelength from the mmWave module. A list of the components included in the simulation model includes housing, mmWave antenna module, sub6 antennas, PCB, shield cans, Flexible Printed Circuits (FPCs), battery, all components having metallic parts, etc.

### 1.2.2 Mesh settings and solution setup

ANSYS HFSS features an automatic adaptive mesh refinement algorithm that refines the computational mesh iteratively in regions with strong EM fields and thereby generates very accurate high-frequency simulation results. The steps of adaptive mesh refinement algorithm execution are as follows. First, an initial computational mesh is created, based on the solution setup parameters entered by the user, and is then used to obtain the initial solution for the EM fields of the simulation model. The algorithm then adaptively refines the mesh in each subsequent iteration until a desired solution accuracy, specified by the user, is achieved. The solution accuracy is commonly defined by a convergence parameter called  $\Delta S$ , which is a variation in the magnitude of all S-parameters between the consecutive iterations of the algorithm [1]. The  $\Delta S$  parameter specified for all PD simulations presented in this report is 0.02. Figure 1-2 shows an example cut surface in the model showing a tetrahedral computational mesh created by the adaptive mesh refinement algorithm in one of the HFSS simulation models. A radiation boundary with Absorbing Boundary Condition (ABC) is assigned to the outer surface of an air-box surrounding the simulation model, which allows the EM waves to propagate outward from the boundary of the domain without generating any reflected EM waves.



**Figure 1-1** Placement of the L-shaped mmWave module, called Plane-A sub-module and Plane-B sub-module, at the top and the back side of the device, respectively.



**Figure 1-2** An example cut surface in an HFSS simulation model showing the tetrahedral mesh created by the adaptive mesh refinement algorithm.

The FEM simulations are performed for the mmWave module that includes Plane A sub-module and Plane B sub-module, as shown in Figure 1-1. In the simulation, 32 wave-ports are assigned to the feed points of the mmWave antenna arrays. Each sub-module has 16 feeding ports. Specifically, eight of them excite the vertical polarization on the antenna array, called V-pol, and the other eight wave-ports excite the horizontal polarization, called H-pol. After the FEM simulations are completed and full-wave EM solutions are obtained, the magnitude and phase

values of the 32 wave-ports excitation signals are sequentially assigned for each of the beams in the codebook. This is accomplished as a post-processing step by using the “Edit post process sources” tab in the HFSS environment, as shown in Figure 1-3 for one of the beams from the codebook.

Spectral Fields   Source Contexts						
	Source	Type	Magnitude	Unit	Phase	Unit
1	HFSSDesign1_1_1:1	Port	0	W	0	deg
2	HFSSDesign1_1_2:1	Port	0	W	0	deg
3	HFSSDesign1_1_3:1	Port	0	W	0	deg
4	HFSSDesign1_1_4:1	Port	0	W	0	deg
5	HFSSDesign1_1_5:1	Port	0	W	0	deg
6	HFSSDesign1_1_6:1	Port	0	W	0	deg
7	HFSSDesign1_1_7:1	Port	0	W	0	deg
8	HFSSDesign1_1_8:1	Port	0	W	0	deg
9	HFSSDesign1_1_9:1	Port	0	W	0	deg
10	HFSSDesign1_1_10:1	Port	0	W	0	deg
11	HFSSDesign1_1_11:1	Port	0	W	0	deg
12	HFSSDesign1_1_12:1	Port	0	W	0	deg
13	HFSSDesign1_1_13:1	Port	0	W	0	deg
14	HFSSDesign1_1_14:1	Port	0	W	0	deg
15	HFSSDesign1_1_15:1	Port	0	W	0	deg
16	HFSSDesign1_1_16:1	Port	0	W	0	deg
17	HFSSDesign1_1_17:1	Port	0	W	0	deg
18	HFSSDesign1_1_18:1	Port	0	W	0	deg
19	HFSSDesign1_1_19:1	Port	0	W	0	deg
20	HFSSDesign1_1_20:1	Port	0	W	0	deg
21	HFSSDesign1_1_21:1	Port	0	W	0	deg
22	HFSSDesign1_1_22:1	Port	0	W	0	deg
23	HFSSDesign1_1_23:1	Port	0	W	0	deg
24	HFSSDesign1_1_24:1	Port	0	W	0	deg
25	HFSSDesign1_1_25:1	Port	0	W	0	deg
26	HFSSDesign1_1_26:1	Port	0	W	0	deg
27	HFSSDesign1_1_27:1	Port	0	W	0	deg
28	HFSSDesign1_1_28:1	Port	0	W	0	deg
29	HFSSDesign1_1_29:1	Port	0	W	0	deg
30	HFSSDesign1_1_30:1	Port	1	W	0	deg
31	HFSSDesign1_1_31:1	Port	0	W	0	deg
32	HFSSDesign1_1_32:1	Port	0	W	0	deg

**Figure 1-3** An example of magnitude and phase assignments to the wave-ports in the “Edit post process sources” tab in the HFSS environment.

### 1.2.3 Time-averaged PD calculation

After the convergence criterion is achieved in the last iterative pass, that is  $\text{Max}\{|\Delta S|\}$  is smaller

than the specified value of the convergence parameter  $\Delta S$  (that being 0.02 in this report, as mentioned above), the values of the electric and magnetic field vectors  $\vec{E}$  and  $\vec{H}$  respectively, are calculated, and then used to calculate the  $PD$  by the following formula:

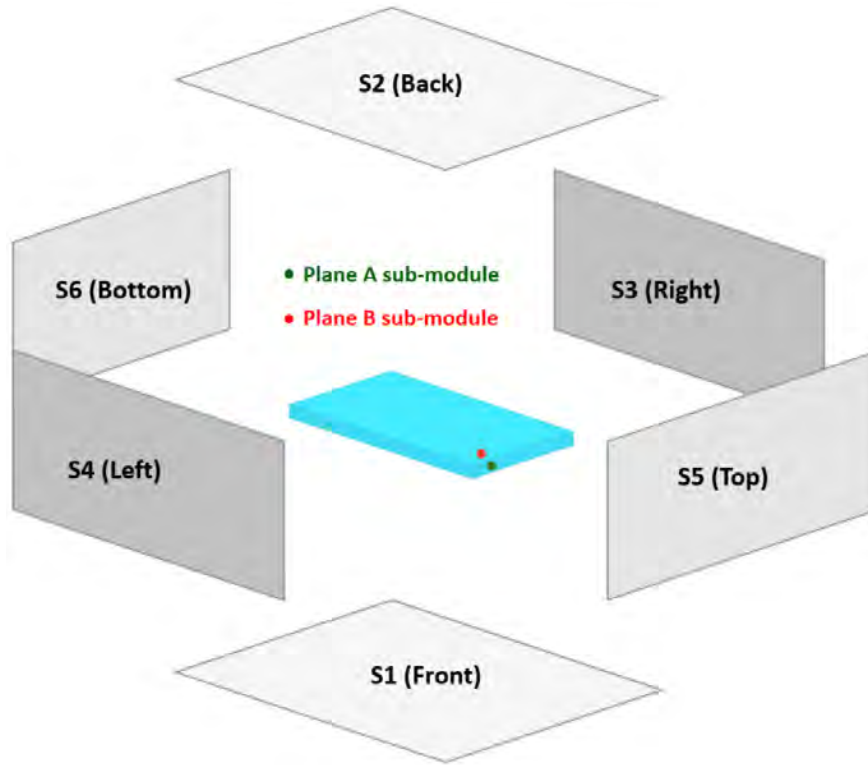
$$PD = \frac{1}{2} \left| \text{Re} \left\{ \vec{E} \times \vec{H}^* \right\} \right|$$

Based on the calculated  $PD$ , the time-averaged  $PD$  ( $PD_{ave}$ ) over a surface  $A$  can be obtained as:

$$PD_{ave} = \frac{1}{2A} \int_A \left| \text{Re} \left\{ \vec{E} \times \vec{H}^* \right\} \right| \cdot dS$$

In order to determine the RF exposure from the mmW antennas in the device, the values of the electric and magnetic field vectors at the six surfaces S1, S2, S3, S4, S5, and S6 shown in Figure 1-4 are needed. Depending on the simulation or measurement setting, the distance from these six surfaces to the device is set to be either 2 mm or 10 mm. As long as the distance between mmWave sub-module and any six surfaces is greater than 25mm, the surface integration terms in the above formula for the  $PD_{ave}$  corresponding to some of these six surfaces are negligible, and thus can be excluded from the  $PD_{ave}$  calculation. Using square markings, Table 1-1 specifies which one of the six surfaces needs to be used in the above formula for the  $PD_{ave}$  calculation. As seen, the surfaces S1, S2, S4, and S5 need to be used in the  $PD_{ave}$  calculations for both planes.

In the spatially averaged power density calculations, the surface  $A$  is a circle in the evaluation plane with an area of 4 cm<sup>2</sup>. Furthermore,  $PD_{ave}$  is calculated at the points of a grid with 0.1 mm step size defined in each evaluation plane.



**Figure 1-4** *PD* evaluation surfaces. Averaged power densities ( $PD_{ave}$ ) are calculated and measured on the specified surfaces (S1, S2, S4, and S5) surrounding the phone.

**Table 1-1** *PD* evaluation surfaces considered for each mmWave module in the device.

	S1 (front)	S2 (back)	S3 (right)	S4 (left)	S5 (top)	S6 (bottom)
Plane A Module	☑	☑	✗	☑	☑	✗
Plane B Module	☑	☑	✗	☑	☑	✗

## 2. Simulation and modeling validation

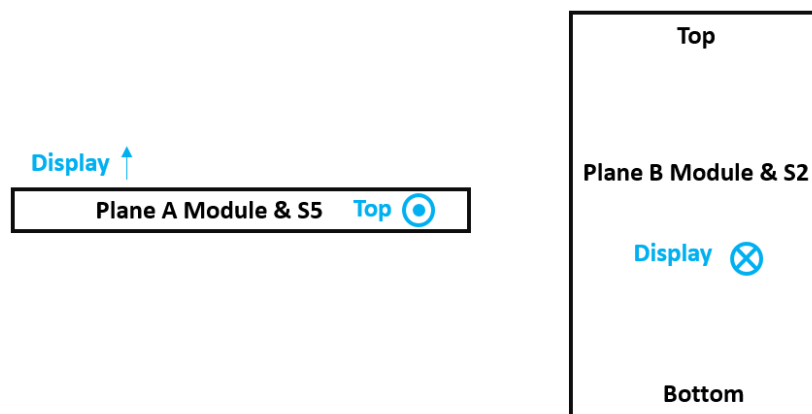
### 2.1 Comparison between simulation and measurement

Following the time-average *PD* calculation procedure described in section 1.2.3, the distributions of *PD* and  $PD_{ave}$  are calculated in the evaluation planes and are compared with the measurements for a selected number of beams, with the highest  $PD_{ave}$  values compared to the other beams, whose IDs are listed in Table 2-1. Also shown in this table are simulated and measured results for the  $PD_{ave}$  for both n258, n260 and n261 frequency bands, as well as

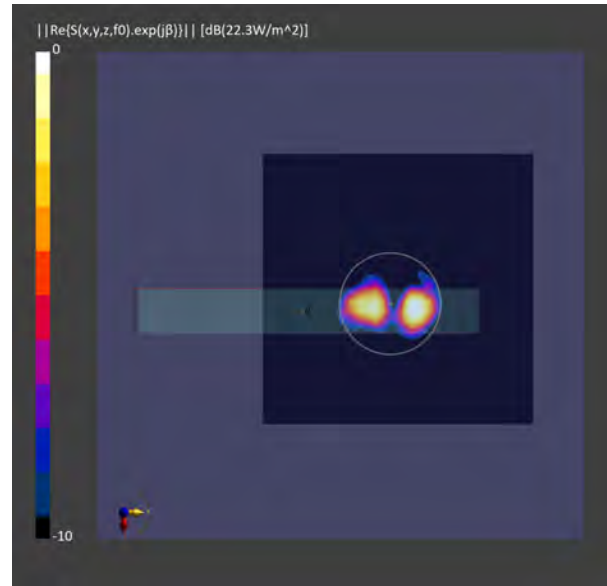
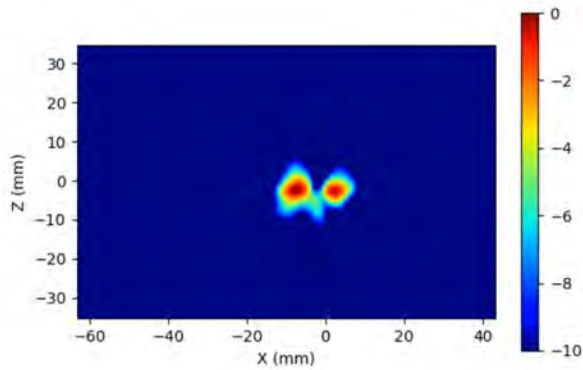
Horizontal, Vertical, and Horizontal + Vertical (Simultaneous Transmit) polarizations, denoted as H, V and H+V, respectively. For Plane B Module,  $PD_{ave}$  of 2mm from DUT is used for calculating minimum target power while  $PD_{ave}$  of 2mm from Camera Bump (CB) is used to derive the correction factor. Figure 2-1 shows orientation of the device for the  $PD$  and  $PD_{ave}$  distribution plots presented in Figures 2-2 to 2-37. The presented plots demonstrate a good agreement between simulated and measured results for both  $PD$  and  $PD_{ave}$ .

**Table 2-1** Simulated and measured  $PD_{ave}$  for selected beams with 17dBm input power setting for single and H+V polarization.

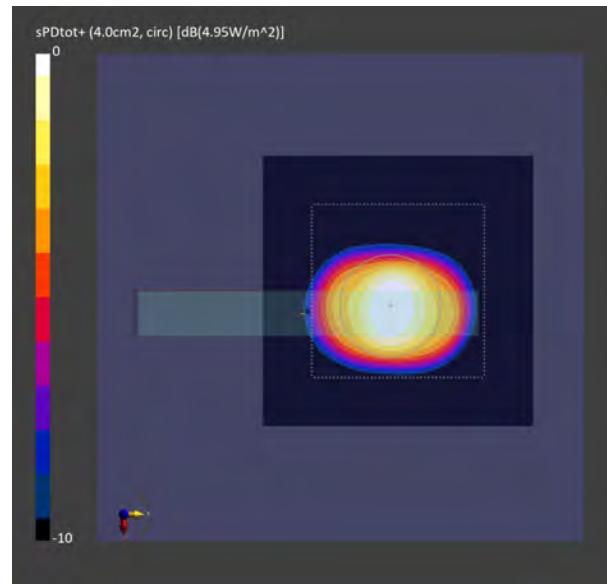
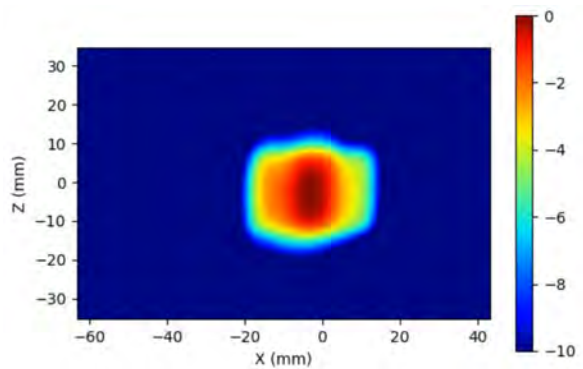
Test No.	Module	Beam ID	Pol	Band	Freq. (GHz)	Exposure Surface	Test Distance	Ref. Plane	Meas. (W/m2)	Sim. (W/m2)	Sim. - Meas. (dB)
1	PlaneA	5	H	n258	24.75	Top (S5)	2mm	DUT	8.92	12.9	1.602
2	PlaneA	2	V	n258	24.75	Top (S5)	2mm	DUT	8.29	12.6	1.818
3	PlaneA	3	H+V	n258	24.75	Top (S5)	2mm	DUT	25.6	32.92	1.092
4	PlaneB	3	H	n258	24.75	Back (S2)	2mm	CB	5.84	7.78	1.246
5	PlaneB	3	V	n258	24.75	Back (S2)	2mm	CB	7.41	8.23	0.456
6	PlaneB	1	H+V	n258	24.75	Back (S2)	2mm	CB	13	17.72	1.345
7	PlaneA	2	H	n260	38.5	Top (S5)	2mm	DUT	4.95	7.4	1.746
8	PlaneA	4	V	n260	38.5	Top (S5)	2mm	DUT	6.74	8.4	0.956
9	PlaneA	6	H+V	n260	38.5	Top (S5)	2mm	DUT	11.4	14.69	1.101
10	PlaneB	6	H	n260	38.5	Back (S2)	2mm	CB	2.58	5.09	2.951
11	PlaneB	0	V	n260	38.5	Back (S2)	2mm	CB	2.82	4.97	2.461
12	PlaneB	6	H+V	n260	38.5	Back (S2)	2mm	CB	6.51	10.3	1.993
13	PlaneA	4	H	n261	27.925	Top (S5)	2mm	DUT	10.6	10.12	-0.201
14	PlaneA	2	V	n261	27.925	Top (S5)	2mm	DUT	10.2	8.98	-0.553
15	PlaneA	3	H+V	n261	27.925	Top (S5)	2mm	DUT	24.5	23.25	-0.227
16	PlaneB	4	H	n261	27.925	Back (S2)	2mm	CB	6.69	7.2	0.319
17	PlaneB	2	V	n261	27.925	Back (S2)	2mm	CB	8.94	8.09	-0.434
18	PlaneB	2	H+V	n261	27.925	Back (S2)	2mm	CB	19.3	16.8	-0.602



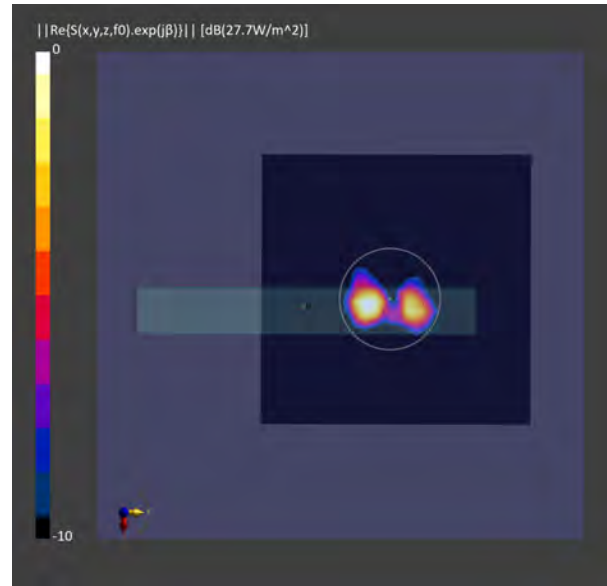
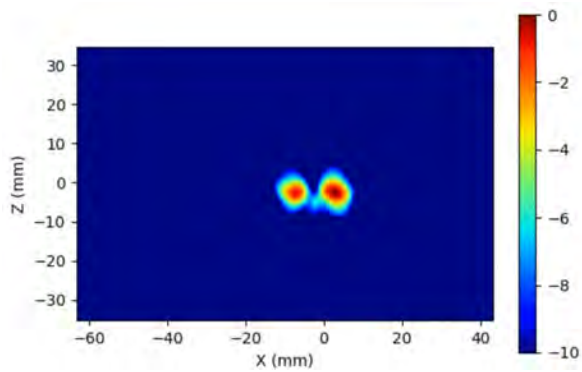
**Figure 2-1** Orientation of the device for the  $PD$  distribution plots.



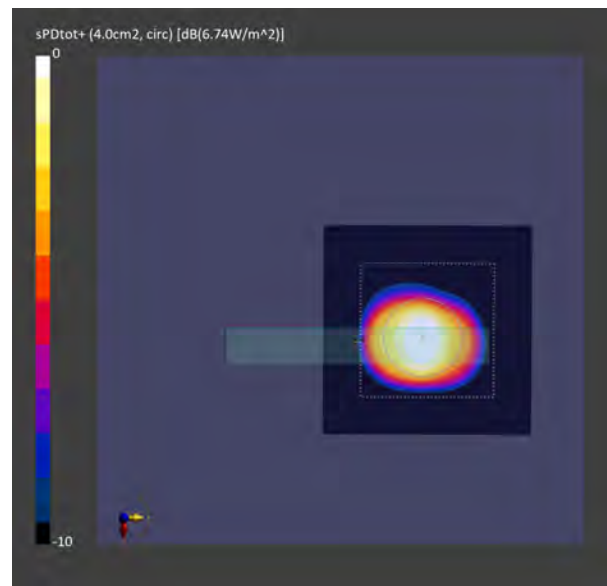
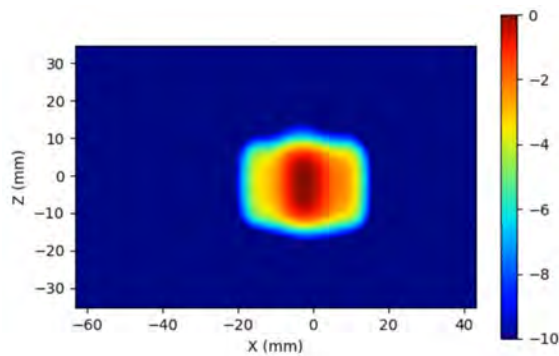
**Figure 2-2** Simulated (left) and measured (right) *PD* distribution for the following configuration: Band n260, MID Channel, Beam ID 2, H polarization, Plane A Module, plotted on the surface S5 (top) with 2mm separation distance to the DUT.



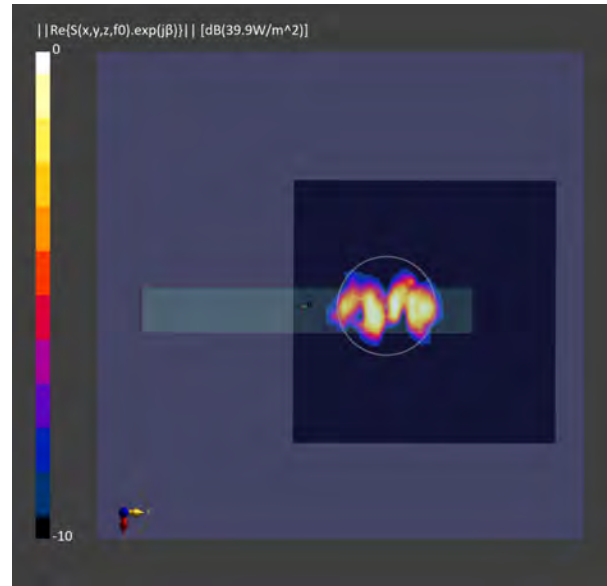
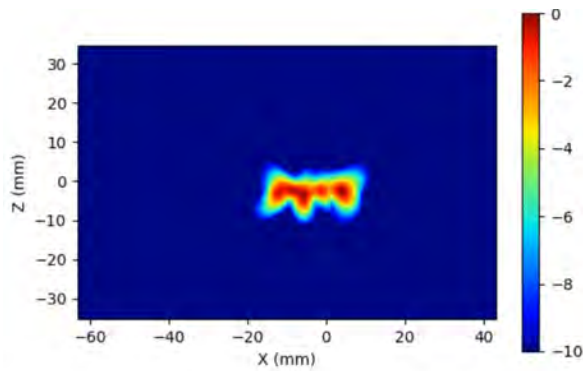
**Figure 2-3** Simulated (left) and measured (right) averaged *PD* distribution for the following configuration: Band n260, MID Channel, Beam ID 2, H polarization, Plane A Module, plotted on the surface S5 (top) with 2mm separation distance to the DUT.



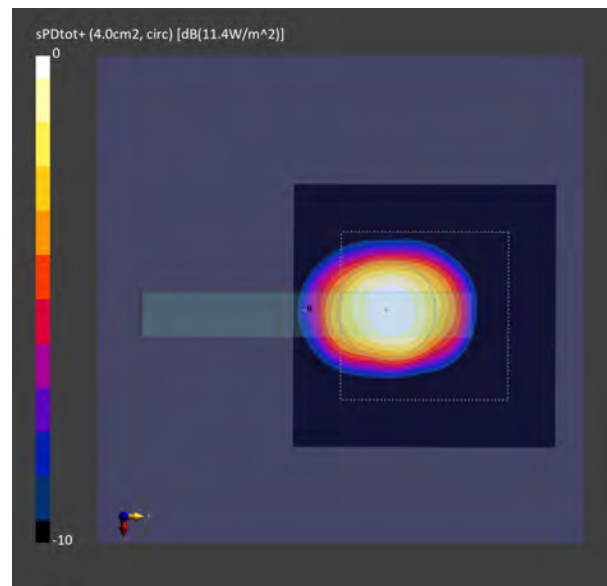
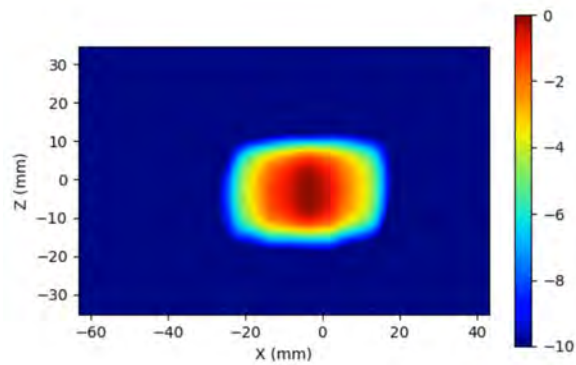
**Figure 2-4** Simulated (left) and measured (right) *PD* distribution for the following configuration: Band n260, MID Channel, Beam ID 4, V polarization, Plane A Module, plotted on the surface S5 (top) with 2mm separation distance to the DUT.



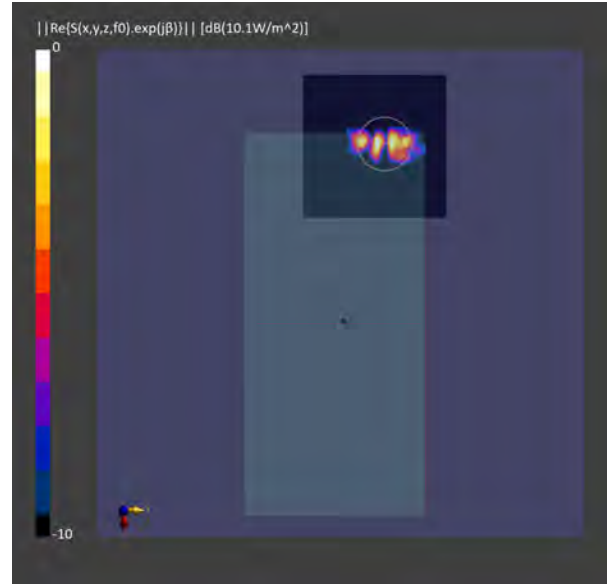
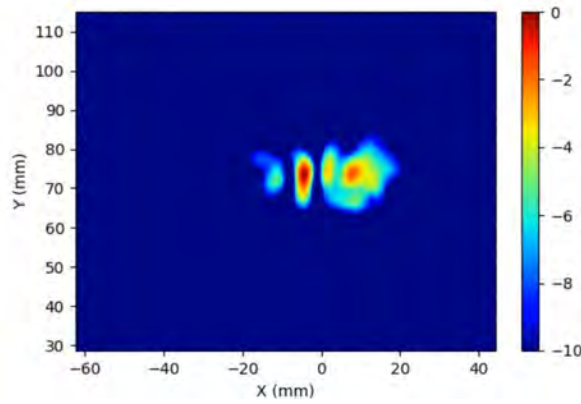
**Figure 2-5** Simulated (left) and measured (right) averaged *PD* distribution for the following configuration: Band n260, MID Channel, Beam ID 4, V polarization, Plane A Module, plotted on the surface S5 (top) with 2mm separation distance to the DUT.



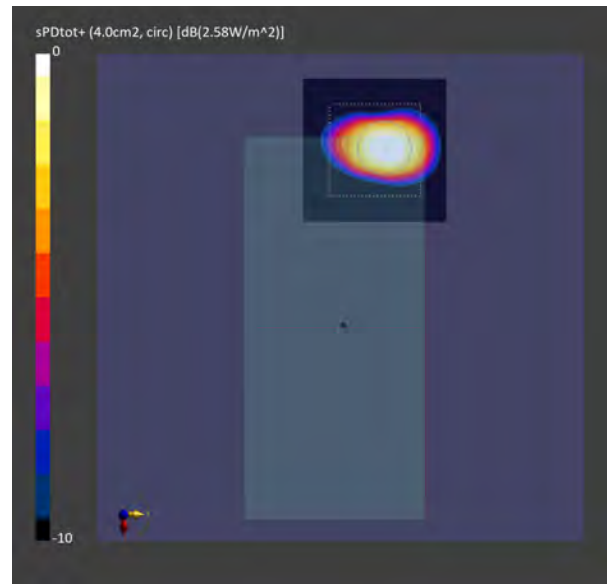
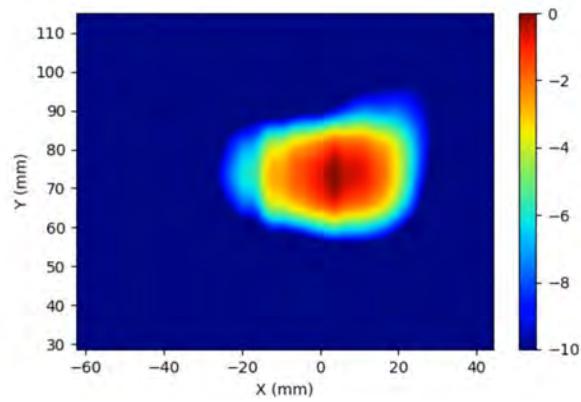
**Figure 2-6** Simulated (left) and measured (right) *PD* distribution for the following configuration: Band n260, MID Channel, Beam ID 6, H+V polarization, Plane A Module, plotted on the surface S5 (top) with 2mm separation distance to the DUT.



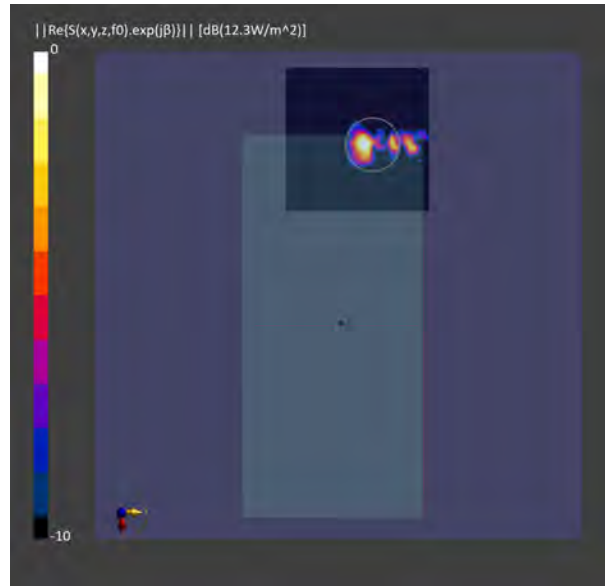
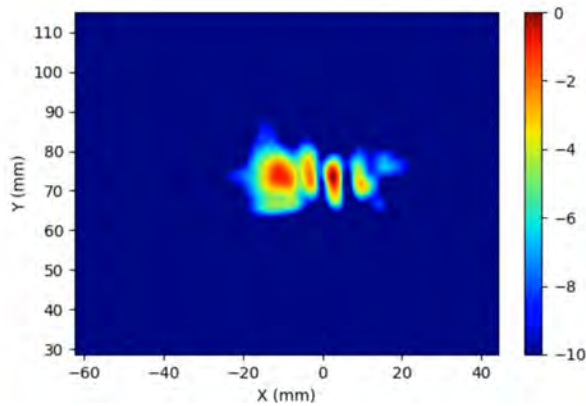
**Figure 2-7** Simulated (left) and measured (right) averaged *PD* distribution for the following configuration: Band n260, MID Channel, Beam ID 6, H+V polarization, Plane A Module, plotted on the surface S5 (top) with 2mm separation distance to the DUT.



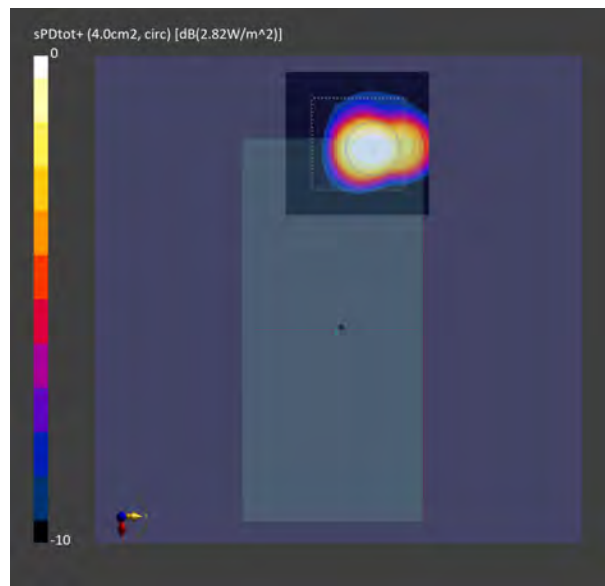
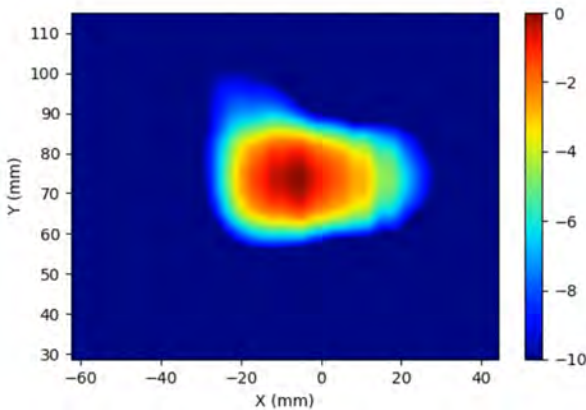
**Figure 2-8** Simulated (left) and measured (right) *PD* distribution for the following configuration: Band n260, MID Channel, Beam ID 6, H polarization, Plane B Module, plotted on the surface S2 (back) with 2mm separation distance to the camera bump.



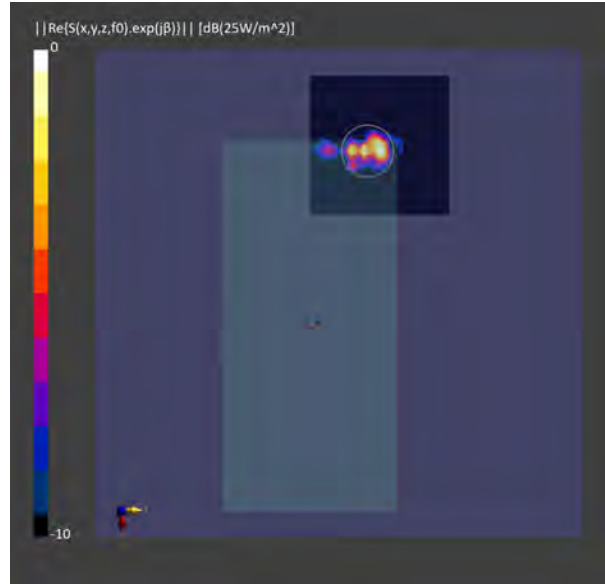
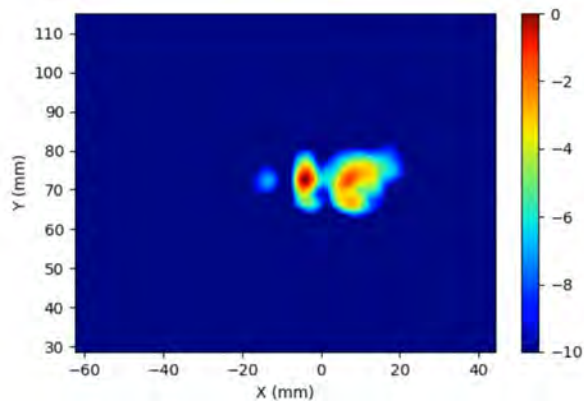
**Figure 2-9** Simulated (left) and measured (right) averaged *PD* distribution for the following configuration: Band n260, MID Channel, Beam ID 6, H polarization, Plane B Module, plotted on the surface S2 (back) with 2mm separation distance to the camera bump.



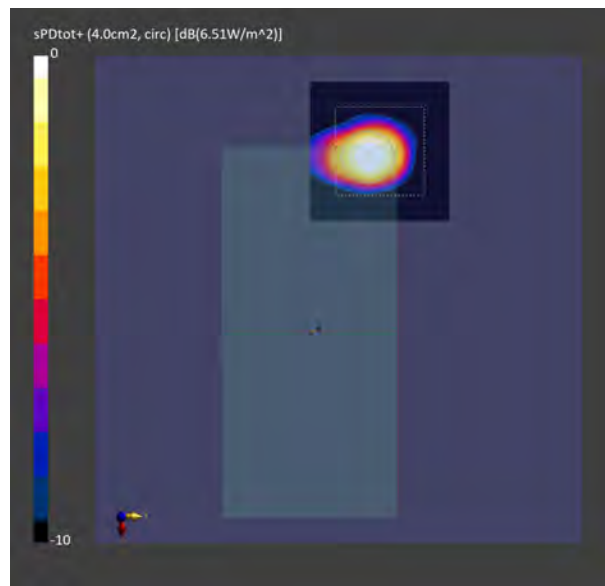
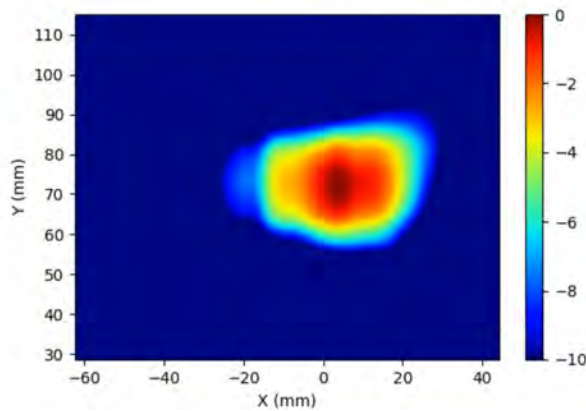
**Figure 2-10** Simulated (left) and measured (right) *PD* distribution for the following configuration: Band n260, MID Channel, Beam ID 0, V polarization, Plane B Module, plotted on the surface S2 (back) with 2mm separation distance to the camera bump.



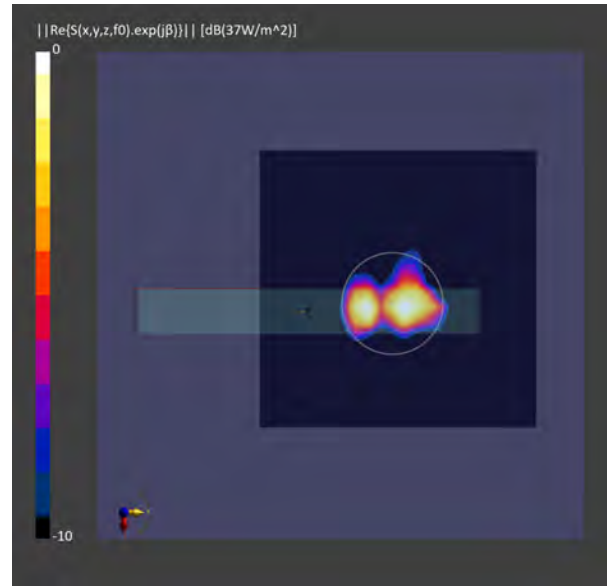
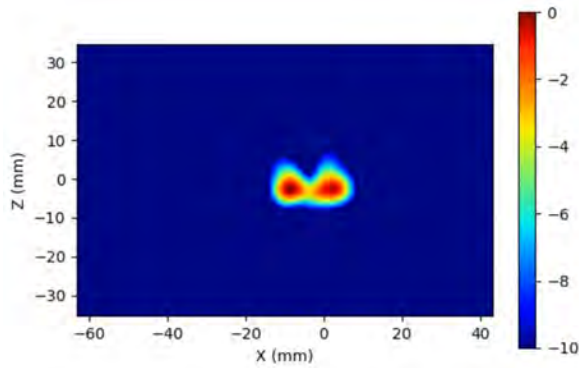
**Figure 2-11** Simulated (left) and measured (right) averaged *PD* distribution for the following configuration: Band n260, MID Channel, Beam ID 0, V polarization, Plane B Module, plotted on the surface S2 (back) with 2mm separation distance to the camera bump.



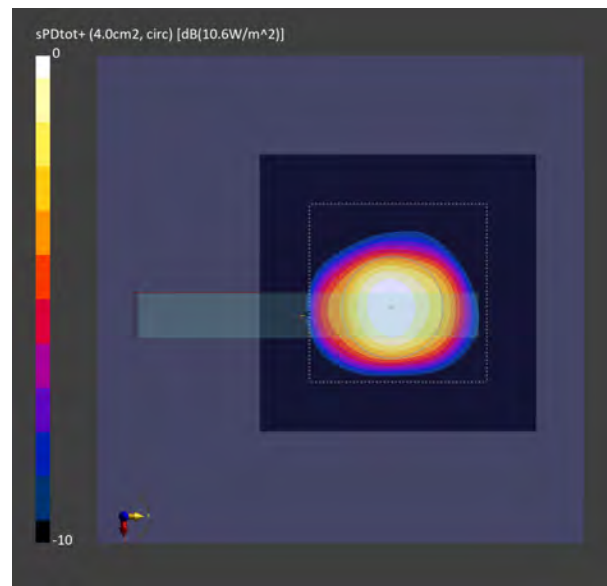
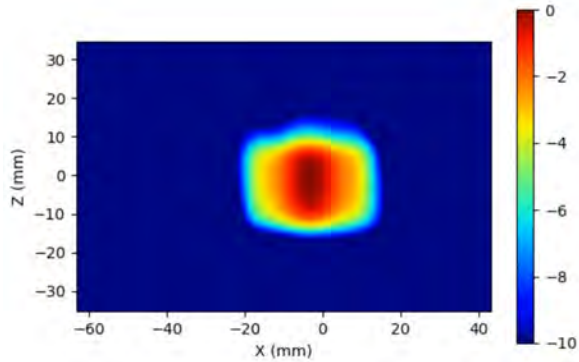
**Figure 2-12** Simulated (left) and measured (right) *PD* distribution for the following configuration: Band n260, MID Channel, Beam ID 6, H+V polarization, Plane B Module, plotted on the surface S2 (back) with 2mm separation distance to the camera bump.



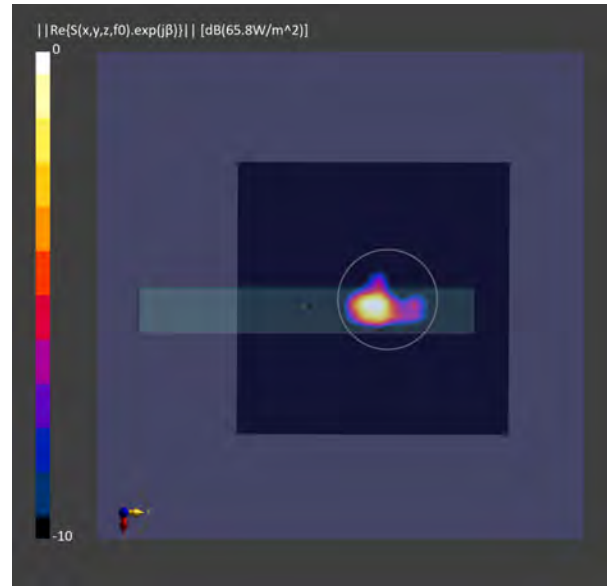
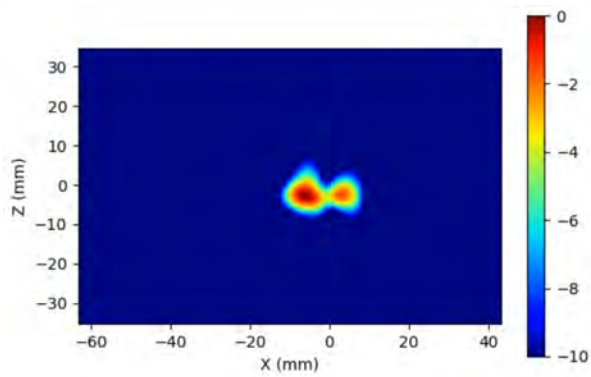
**Figure 2-13** Simulated (left) and measured (right) averaged *PD* distribution for the following configuration: Band n260, MID Channel, Beam ID 6, H+V polarization, Plane B Module, plotted on the surface S2 (back) with 2mm separation distance to the camera bump.



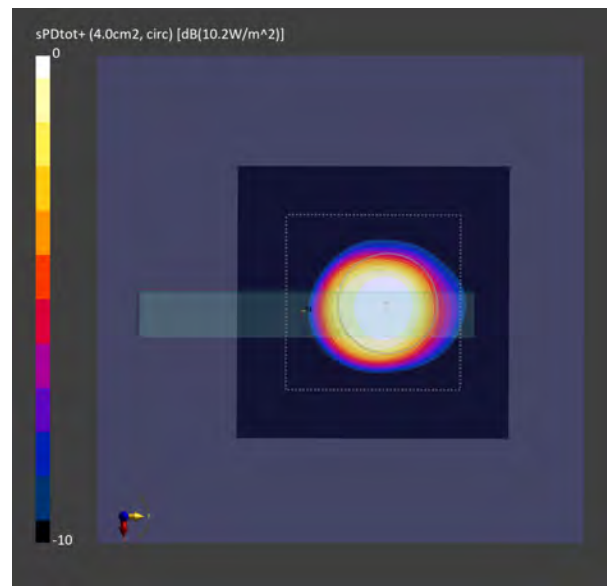
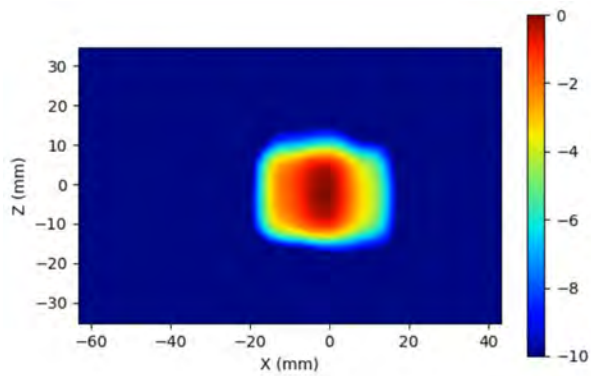
**Figure 2-14** Simulated (left) and measured (right) *PD* distribution for the following configuration: Band n261, MID Channel, Beam ID 4, H polarization, Plane A Module, plotted on the surface S5 (top) with 2mm separation distance to the DUT.



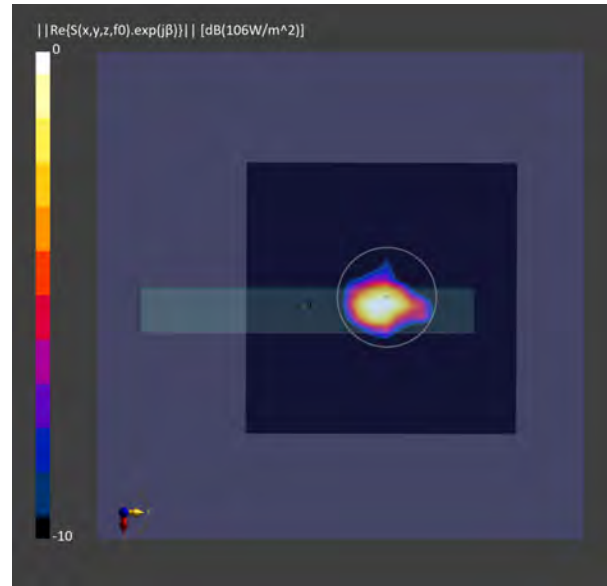
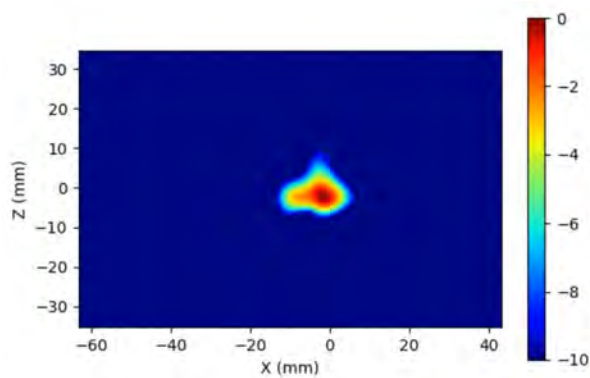
**Figure 2-15** Simulated (left) and measured (right) averaged *PD* distribution for the following configuration: Band n261, MID Channel, Beam ID 4, H polarization, Plane A Module, plotted on the surface S5 (top) with 2mm separation distance to the DUT.



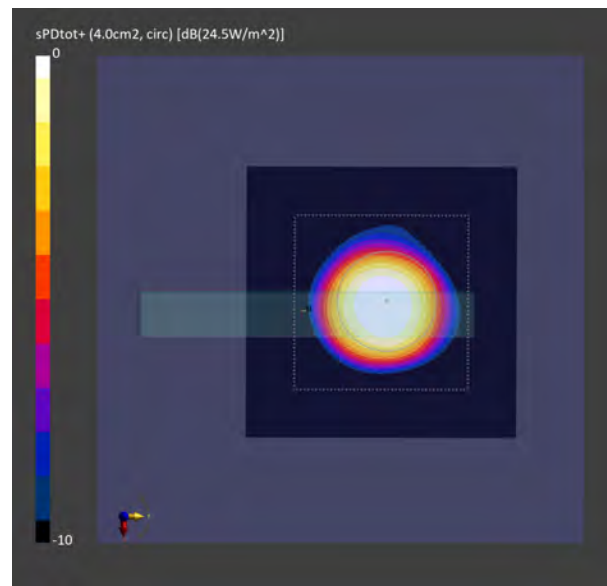
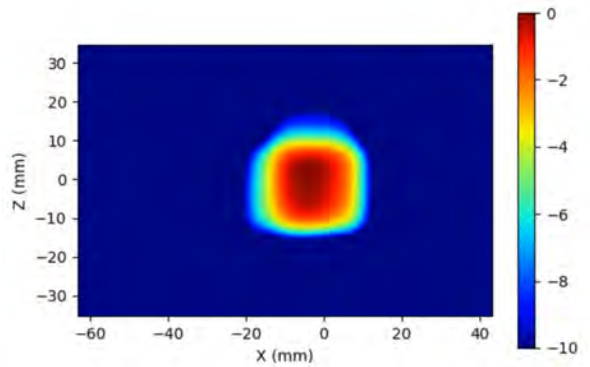
**Figure 2-16** Simulated (left) and measured (right) *PD* distribution for the following configuration: Band n261, MID Channel, Beam ID 2, V polarization, Plane A Module, plotted on the surface S5 (top) with 2mm separation distance to the DUT.



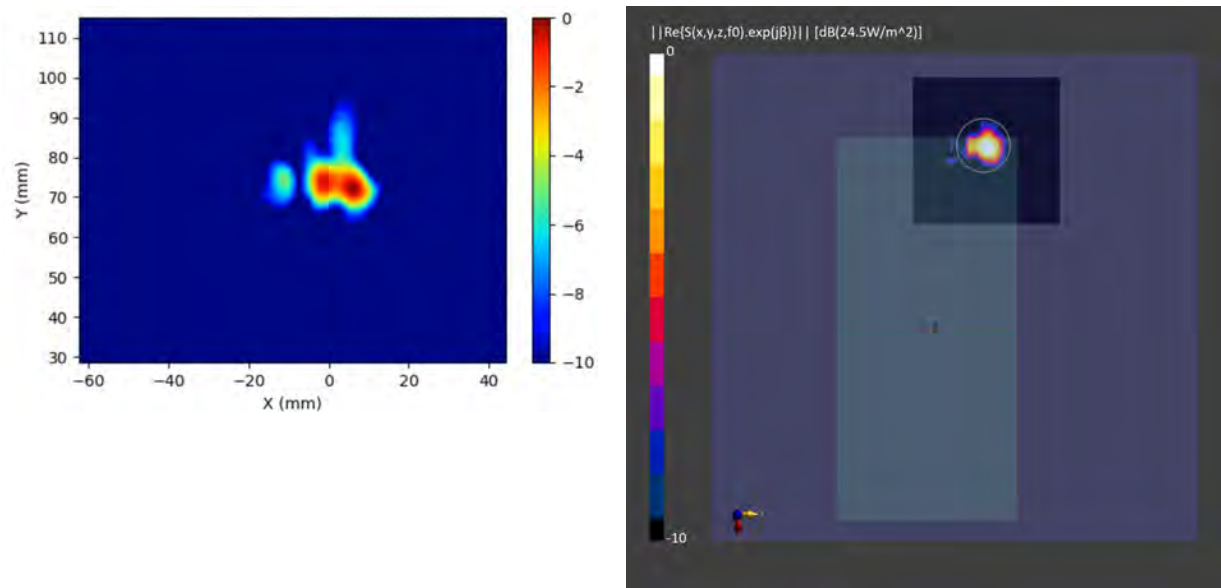
**Figure 2-17** Simulated (left) and measured (right) averaged *PD* distribution for the following configuration: Band n261, MID Channel, Beam ID 2, V polarization, Plane A Module, plotted on the surface S5 (top) with 2mm separation distance to the DUT.



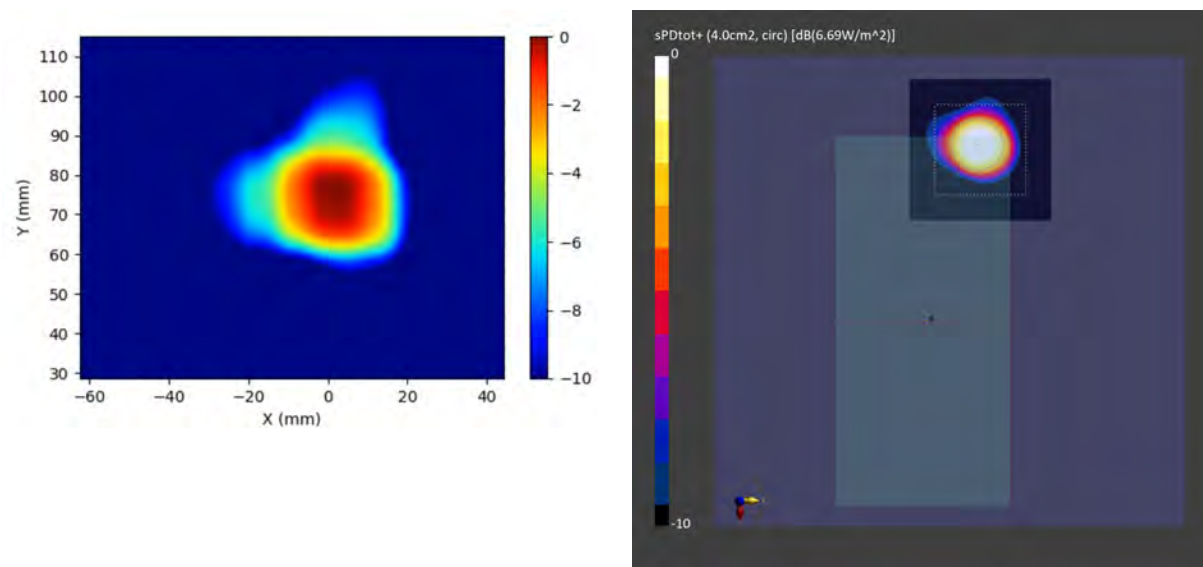
**Figure 2-18** Simulated (left) and measured (right) *PD* distribution for the following configuration: Band n261, MID Channel, Beam ID 3, H+V polarization, Plane A Module, plotted on the surface S5 (top) with 2mm separation distance to the DUT.



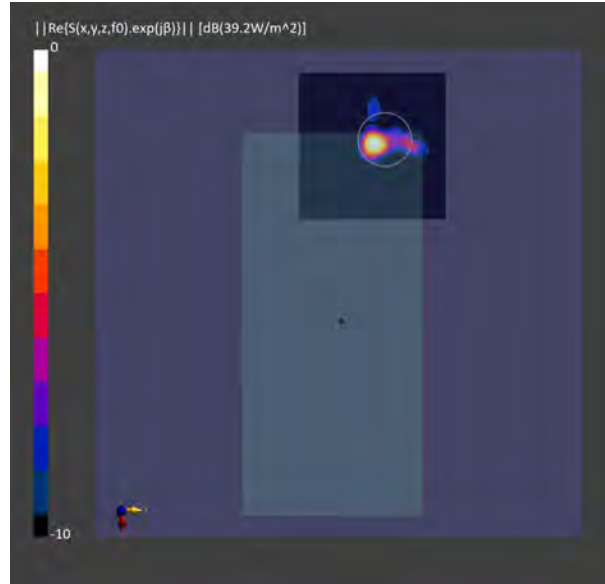
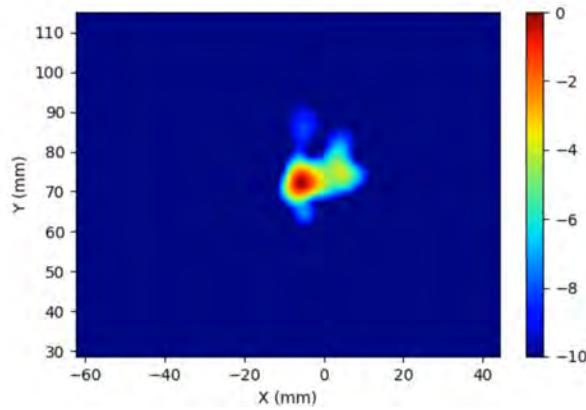
**Figure 2-19** Simulated (left) and measured (right) averaged *PD* distribution for the following configuration: Band n261, MID Channel, Beam ID 3, H+V polarization, Plane A Module, plotted on the surface S5 (top) with 2mm separation distance to the DUT.



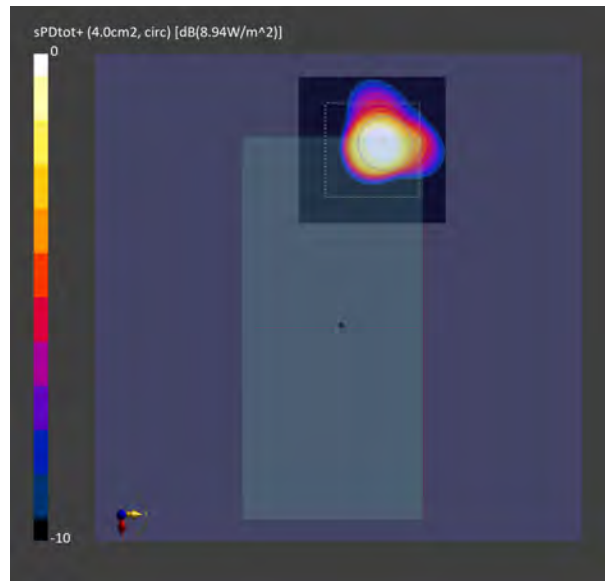
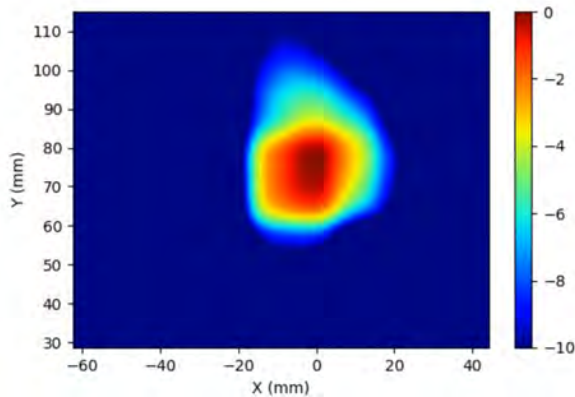
**Figure 2-20** Simulated (left) and measured (right) *PD* distribution for the following configuration: Band n261, MID Channel, Beam ID 4, H polarization, Plane B Module, plotted on the surface S2 (back) with 2mm separation distance to the camera bump.



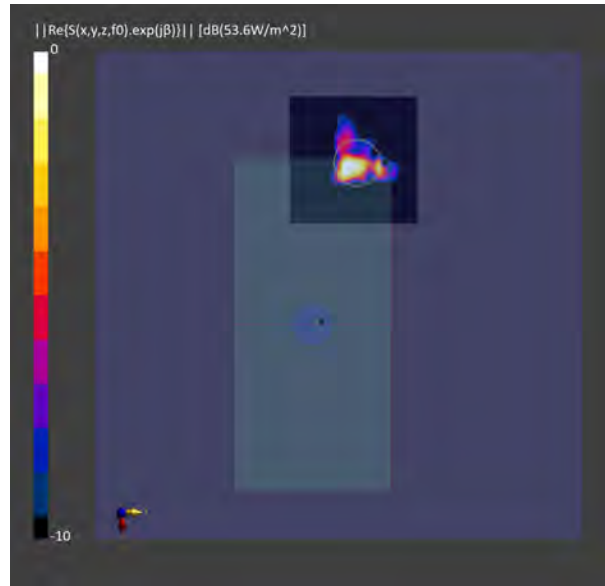
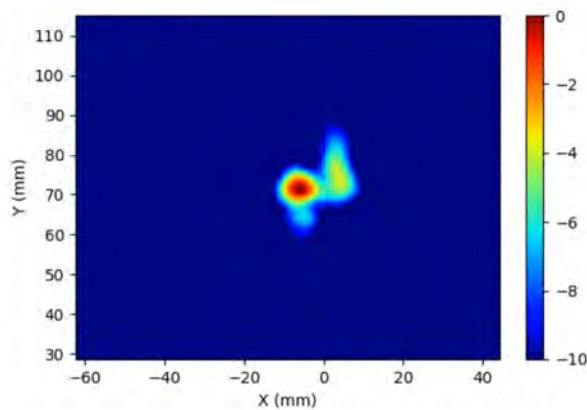
**Figure 2-21** Simulated (left) and measured (right) averaged *PD* distribution for the following configuration: Band n261, MID Channel, Beam ID 4, H polarization, Plane B Module, plotted on the surface S2 (back) with 2mm separation distance to the camera bump.



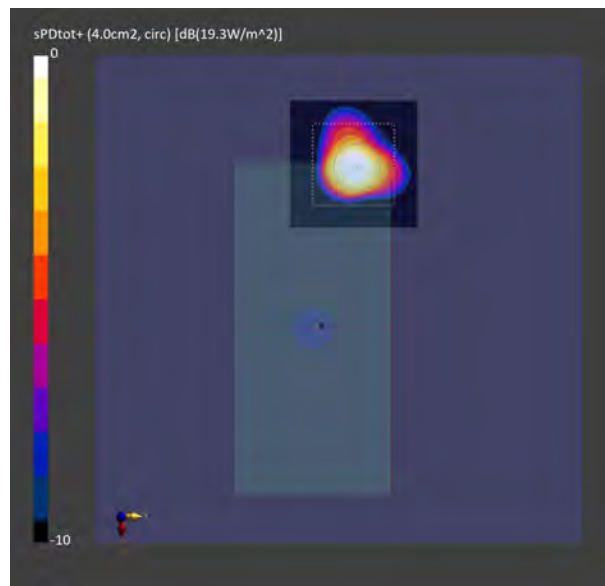
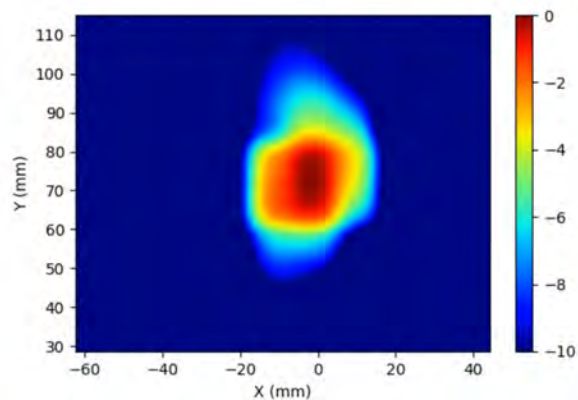
**Figure 2-22** Simulated (left) and measured (right) *PD* distribution for the following configuration: Band n261, MID Channel, Beam ID 2, V polarization, Plane B Module, plotted on the surface S2 (back) with 2mm separation distance to the camera bump.



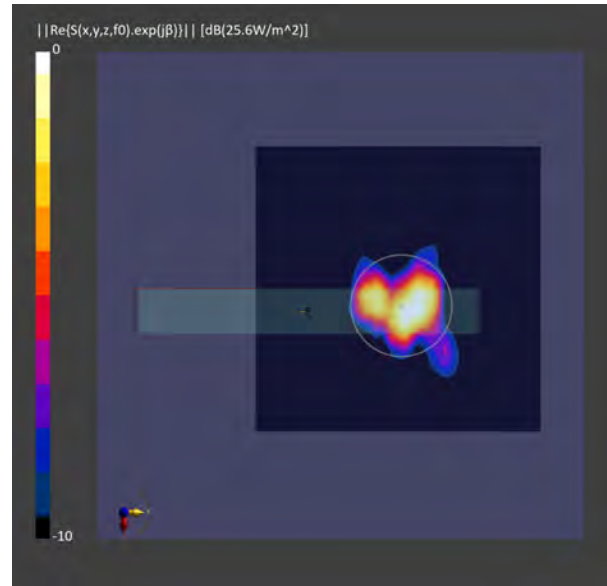
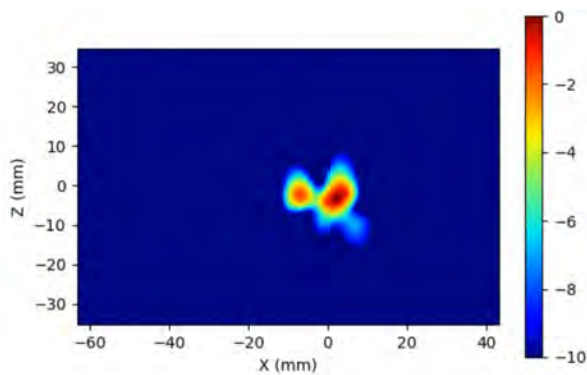
**Figure 2-23** Simulated (left) and measured (right) averaged *PD* distribution for the following configuration: Band n261, MID Channel, Beam ID 2, V polarization, Plane B Module, plotted on the surface S2 (back) with 2mm separation distance to the camera bump.



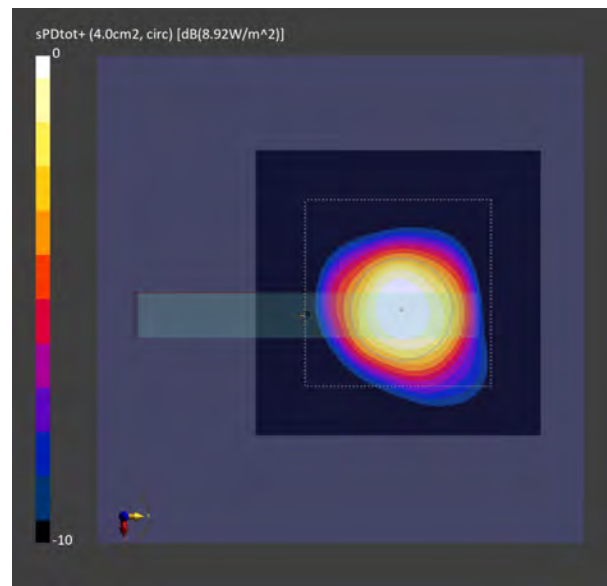
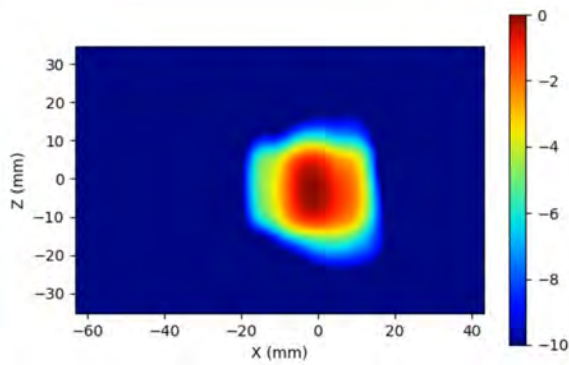
**Figure 2-24** Simulated (left) and measured (right) *PD* distribution for the following configuration: Band n261, MID Channel, Beam ID 2, H+V polarization, Plane B Module, plotted on the surface S2 (back) with 2mm separation distance to the camera bump.



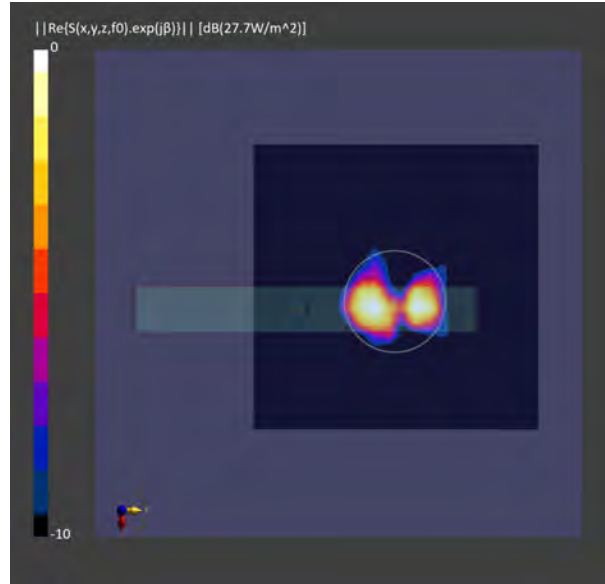
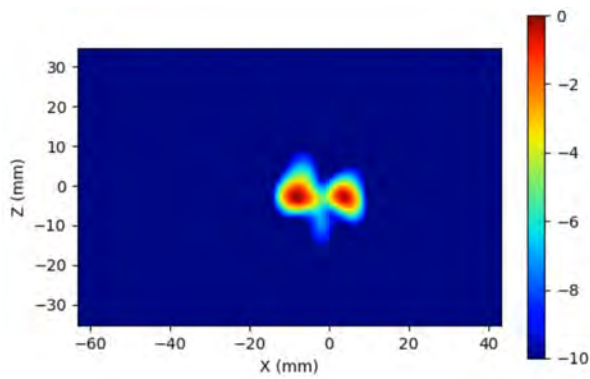
**Figure 2-25** Simulated (left) and measured (right) averaged *PD* distribution for the following configuration: Band n261, MID Channel, Beam ID 2, H+V polarization, Plane B Module, plotted on the surface S2 (back) with 2mm separation distance to the camera bump.



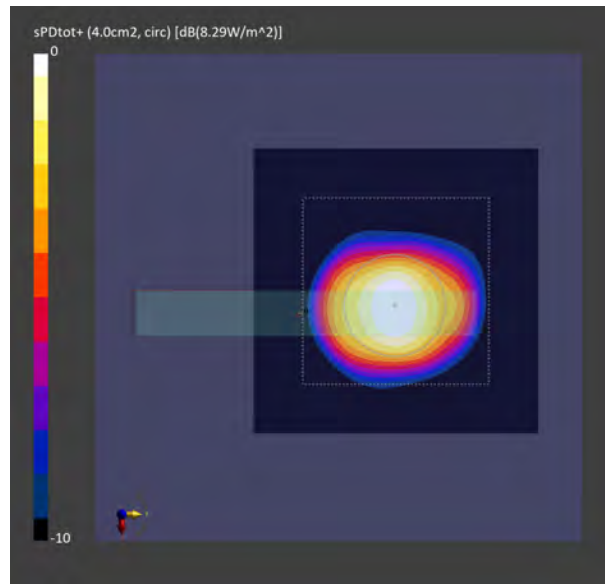
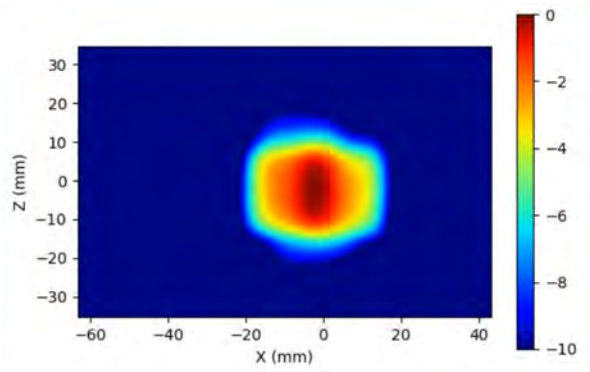
**Figure 2-26** Simulated (left) and measured (right) *PD* distribution for the following configuration: Band n258, MID Channel, Beam ID 5, H polarization, Plane A Module, plotted on the surface S5 (top) with 2mm separation distance to the DUT.



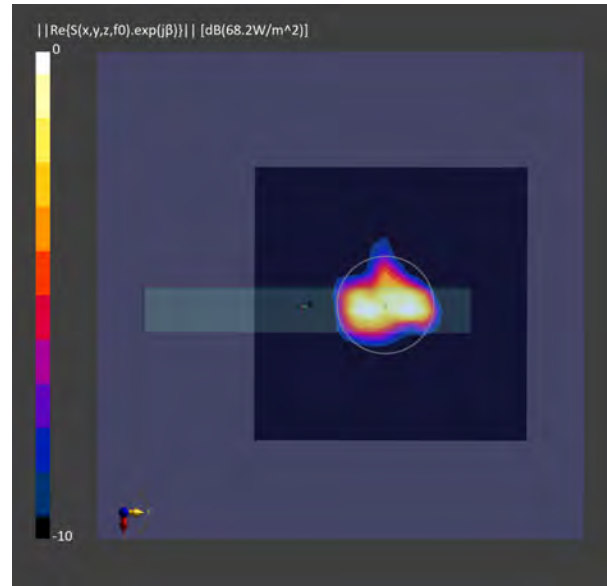
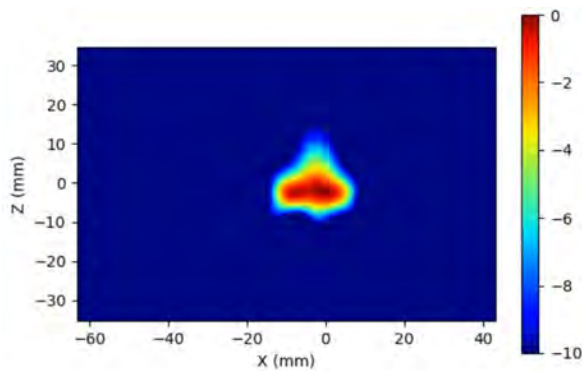
**Figure 2-27** Simulated (left) and measured (right) averaged *PD* distribution for the following configuration: Band n258, MID Channel, Beam ID 5, H polarization, Plane A Module, plotted on the surface S5 (top) with 2mm separation distance to the DUT.



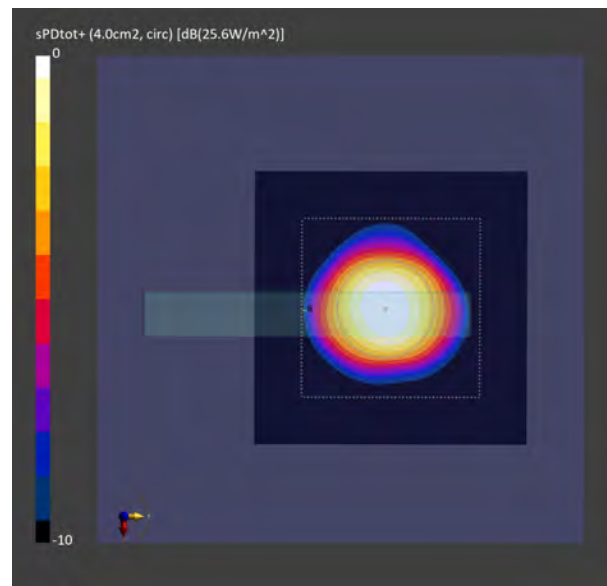
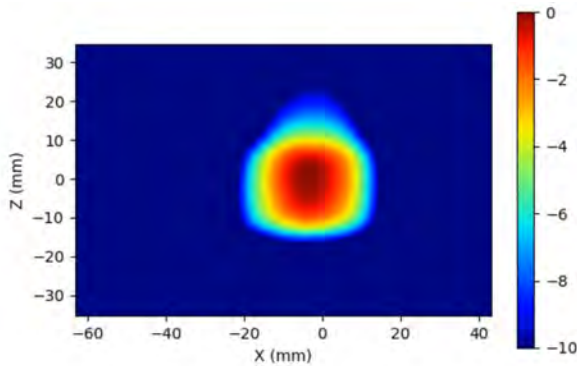
**Figure 2-28** Simulated (left) and measured (right) *PD* distribution for the following configuration: Band n258, MID Channel, Beam ID 2, V polarization, Plane A Module, plotted on the surface S5 (top) with 2mm separation distance to the DUT.



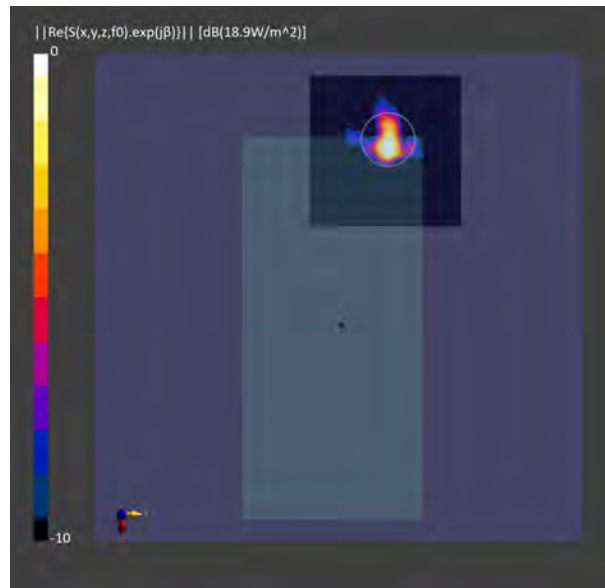
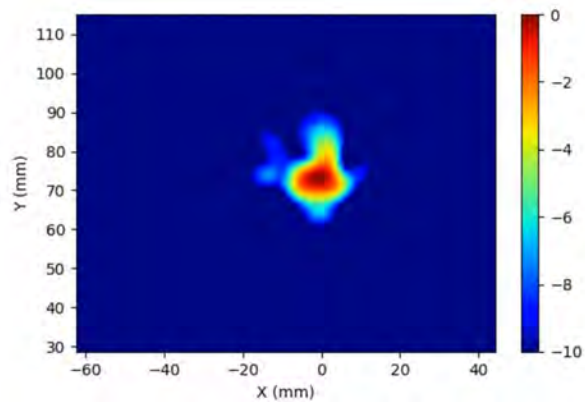
**Figure 2-29** Simulated (left) and measured (right) averaged *PD* distribution for the following configuration: Band n258, MID Channel, Beam ID 2, V polarization, Plane A Module, plotted on the surface S5 (top) with 2mm separation distance to the DUT.



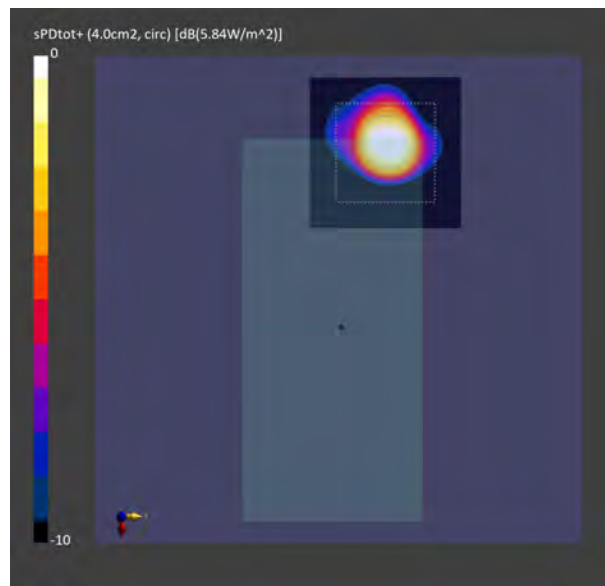
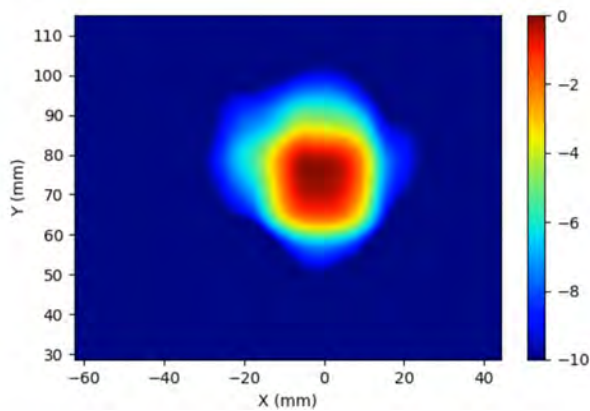
**Figure 2-30** Simulated (left) and measured (right) *PD* distribution for the following configuration: Band n258, MID Channel, Beam ID 3, H+V polarization, Plane A Module, plotted on the surface S5 (top) with 2mm separation distance to the DUT.



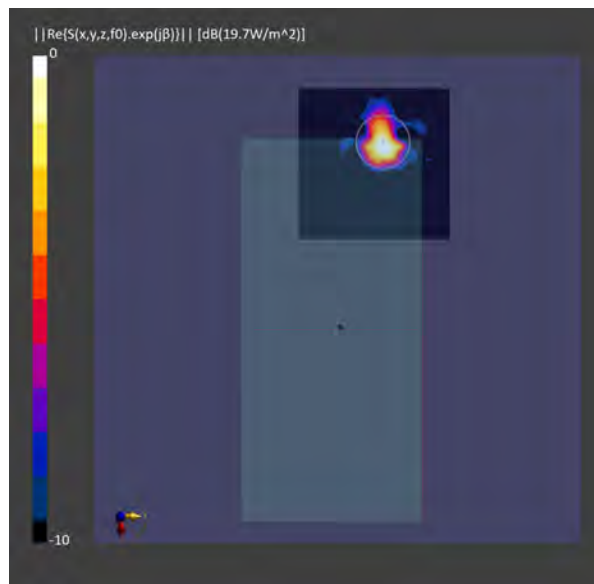
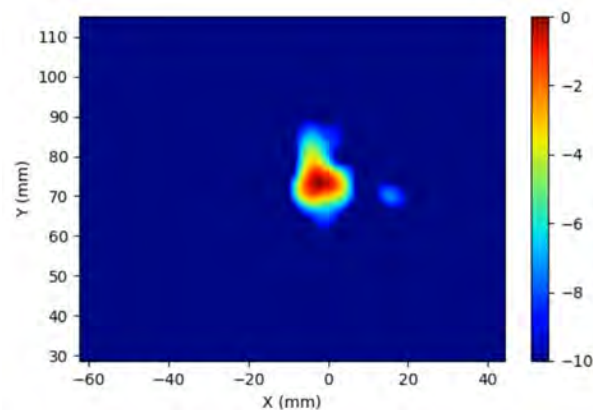
**Figure 2-31** Simulated (left) and measured (right) averaged *PD* distribution for the following configuration: Band n258, MID Channel, Beam ID 3, H+V polarization, Plane A Module, plotted on the surface S5 (top) with 2mm separation distance to the DUT.



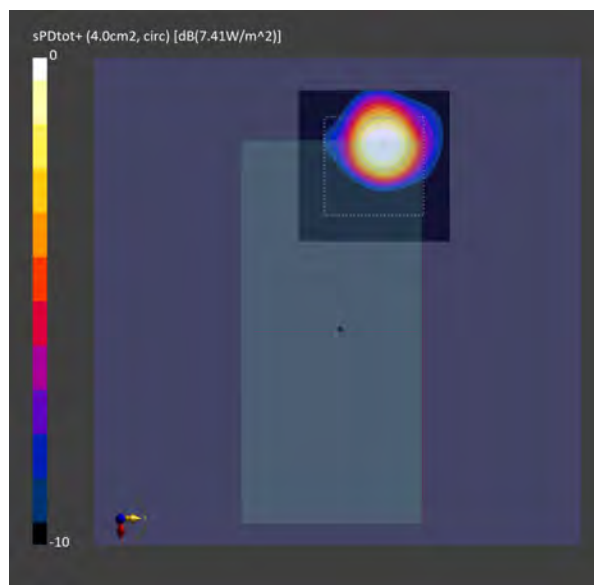
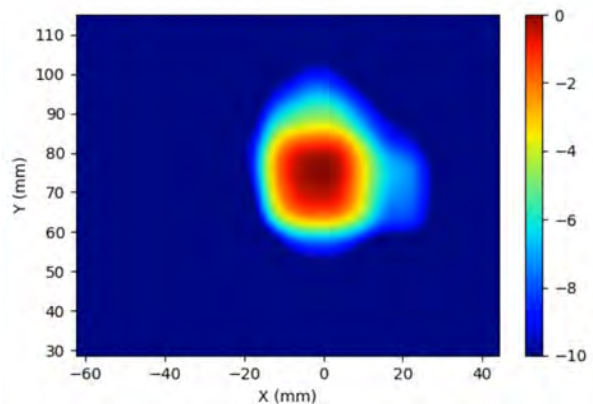
**Figure 2-32** Simulated (left) and measured (right) *PD* distribution for the following configuration: Band n258, MID Channel, Beam ID 3, H polarization, Plane B Module, plotted on the surface S2 (back) with 2mm separation distance to the camera bump.



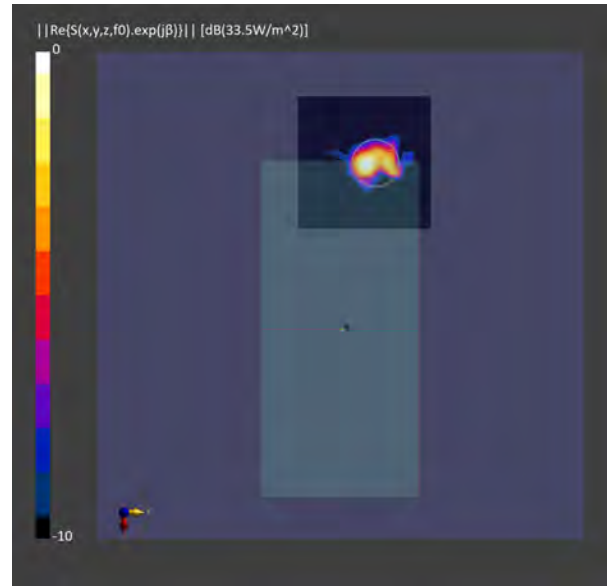
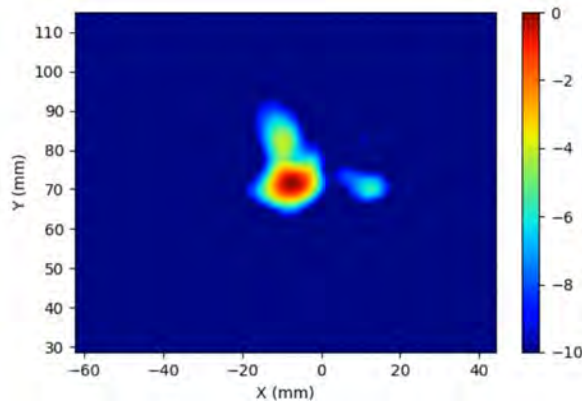
**Figure 2-33** Simulated (left) and measured (right) averaged *PD* distribution for the following configuration: Band n258, MID Channel, Beam ID 3, H polarization, Plane B Module, plotted on the surface S2 (back) with 2mm separation distance to the camera bump.



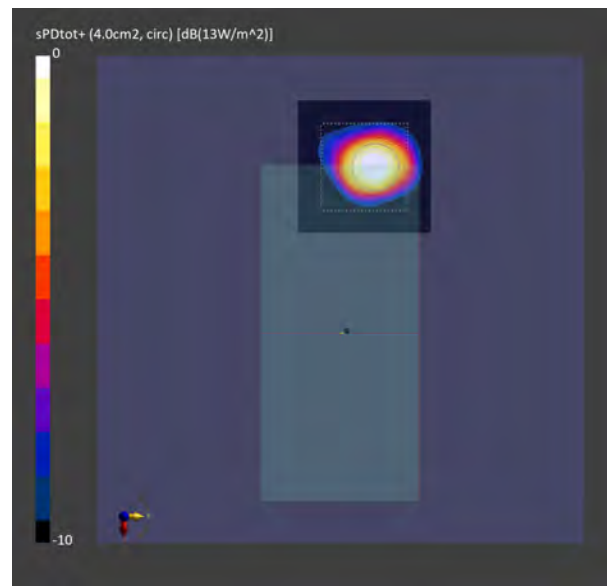
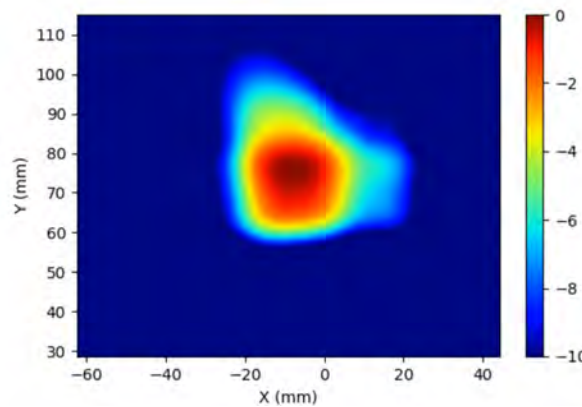
**Figure 2-34** Simulated (left) and measured (right) *PD* distribution for the following configuration: Band n258, MID Channel, Beam ID 3, V polarization, Plane B Module, plotted on the surface S2 (back) with 2mm separation distance to the camera bump.



**Figure 2-35** Simulated (left) and measured (right) averaged *PD* distribution for the following configuration: Band n258, MID Channel, Beam ID 3, V polarization, Plane B Module, plotted on the surface S2 (back) with 2mm separation distance to the camera bump.



**Figure 2-36** Simulated (left) and measured (right) *PD* distribution for the following configuration: Band n258, MID Channel, Beam ID 1, H+V polarization, Plane B Module, plotted on the surface S2 (back) with 2mm separation distance to the camera bump.



**Figure 2-37** Simulated (left) and measured (right) averaged *PD* distribution for the following configuration: Band n258, MID Channel, Beam ID 1, H+V polarization, Plane B Module, plotted on the surface S2 (back) with 2mm separation distance to the camera bump.

## 2.2 Calculated PD per beam ID

The simulated time-average  $PD$  calculated for the selected evaluation planes for all beams in the codebook are presented in this section. The calculations are done for the LOW, MID, and HIGH channels of n260, n261 and n258 frequency bands for both Plane A Module and Plane B Module. Since the beams of H+V configuration are not phase coherent, the relative phase difference between the corresponding H+V beams with vertical and horizontal polarizations is swept from  $0^\circ$  to  $360^\circ$  in  $5^\circ$  steps, and the  $PD_{ave}$  is calculated for all of these phase difference values in order to capture the largest possible  $PD_{ave}$  value. The  $PD_{ave}$  values for every beam ID are reported in Table 2-2 to Table 2-19. For H+V configuration, the largest possible  $PD_{ave}$  values calculated using this relative phase difference sweeping method are reported.

**Table 2-2** Simulated averaged PD over 4 [cm<sup>2</sup>] area on Plane A Module - n260 Low Channel.

PD Simulation(W/m <sup>2</sup> )		Low Channel												
		2mm					52.09%	44.48%	26.99%	10mm				62.23%
		S1	S2	S2	S4	S5	S1/S5	S2/S5	S4/S5	S1	S2	S4	S5	S5/S5
Pol	Beam ID	front	back	back(CB)	left	top				front	back	left	top	10mm/2mm
H	0	3.37	1.95	1.27	0.35	7.82	0.43	0.25	0.05	1.10	0.74	0.23	3.22	0.41
H	1	3.60	2.77	1.98	0.20	7.07	0.51	0.39	0.03	1.59	1.26	0.13	4.18	0.59
H	2	3.63	2.92	1.92	0.40	7.57	0.48	0.39	0.05	1.29	1.26	0.18	4.46	0.59
H	3	3.53	2.46	1.61	0.57	7.09	0.50	0.35	0.08	1.48	1.07	0.33	3.89	0.55
H	4	3.45	2.10	1.38	0.36	6.62	0.52	0.32	0.05	1.53	0.87	0.21	3.77	0.57
H	5	2.15	1.99	1.14	1.01	5.96	0.36	0.33	0.17	0.92	0.69	0.56	2.45	0.41
H	6	2.94	1.90	1.23	0.71	6.83	0.43	0.28	0.10	1.12	0.72	0.45	2.69	0.39
V	0	3.31	2.35	1.60	1.92	7.12	0.46	0.33	0.27	1.28	0.96	1.20	3.49	0.49
V	1	2.04	1.97	1.11	1.11	5.78	0.35	0.34	0.19	0.86	0.73	0.72	2.32	0.40
V	2	3.43	2.26	1.50	0.38	6.74	0.51	0.33	0.06	1.52	0.97	0.25	3.83	0.57
V	3	3.65	2.70	1.82	0.30	7.46	0.49	0.36	0.04	1.43	1.23	0.17	4.22	0.57
V	4	3.43	3.13	1.93	0.43	7.54	0.46	0.42	0.06	1.18	1.24	0.21	4.69	0.62
V	5	3.37	2.79	2.01	1.52	7.57	0.45	0.37	0.20	1.57	1.30	0.87	3.99	0.53
V	6	3.29	2.50	1.65	1.91	8.66	0.38	0.29	0.22	1.04	1.00	1.19	3.65	0.42
H+V	0	5.86	3.73	2.09	2.87	13.40	0.44	0.28	0.21	2.22	1.22	1.86	5.33	0.40
H+V	1	6.39	6.17	4.65	1.76	13.87	0.46	0.44	0.13	2.69	3.17	1.18	7.73	0.56
H+V	2	7.56	5.85	4.05	0.80	15.38	0.49	0.38	0.05	2.93	2.66	0.48	8.92	0.58
H+V	3	7.51	5.51	3.55	1.13	15.80	0.48	0.35	0.07	3.04	2.47	0.64	9.09	0.58
H+V	4	7.28	5.66	3.77	0.98	15.27	0.48	0.37	0.06	2.73	2.52	0.56	9.03	0.59
H+V	5	6.36	6.23	4.57	3.27	15.03	0.42	0.41	0.22	2.82	3.13	1.78	7.54	0.50
H+V	6	5.23	4.09	2.63	2.97	13.50	0.39	0.30	0.22	1.87	1.70	1.90	5.14	0.38

**Table 2-3** Simulated averaged PD over 4 [cm<sup>2</sup>] area on Plane A Module - n260 Mid Channel.

PD Simulation(W/m <sup>2</sup> )		Mid Channel												
		2mm					62.37%	46.59%	22.85%	10mm				59.10%
		S1	S2	S2	S4	S5	S1/S5	S2/S5	S4/S5	S1	S2	S4	S5	S5/S5
Pol	Beam ID	front	back	back(CB)	left	top				front	back	left	top	10mm/2mm
H	0	3.04	2.16	1.36	0.62	7.36	0.41	0.29	0.08	0.98	0.80	0.42	2.92	0.40
H	1	3.74	2.56	1.83	0.40	7.18	0.52	0.36	0.06	1.42	1.27	0.24	3.87	0.54
H	2	3.58	3.35	2.28	0.43	7.40	0.48	0.45	0.06	1.32	1.47	0.13	4.31	0.58
H	3	3.41	2.33	1.58	0.35	6.33	0.54	0.37	0.06	1.58	1.06	0.19	3.53	0.56
H	4	2.37	2.26	1.34	0.27	5.27	0.45	0.43	0.05	1.05	0.91	0.17	2.74	0.52
H	5	1.86	2.17	1.27	0.99	5.07	0.37	0.43	0.20	0.60	0.64	0.38	2.27	0.45
H	6	2.20	1.89	1.16	0.81	6.02	0.37	0.31	0.13	0.85	0.64	0.53	2.23	0.37
V	0	2.52	1.75	1.11	1.18	5.62	0.45	0.31	0.21	1.08	0.65	0.72	2.52	0.45
V	1	1.97	1.81	1.04	0.97	5.06	0.39	0.36	0.19	0.75	0.56	0.58	2.16	0.43
V	2	2.66	2.44	1.54	0.38	6.03	0.44	0.41	0.06	1.03	1.05	0.24	3.23	0.54
V	3	3.59	3.06	2.12	0.20	6.98	0.51	0.44	0.03	1.64	1.40	0.12	4.12	0.59
V	4	3.95	3.48	2.28	0.52	8.40	0.47	0.41	0.06	1.38	1.44	0.14	4.91	0.59
V	5	3.32	2.67	1.78	1.31	7.35	0.45	0.36	0.18	1.21	1.12	0.55	3.88	0.53
V	6	3.62	2.53	1.55	1.22	7.96	0.45	0.32	0.15	1.18	0.95	0.77	3.64	0.46
H+V	0	5.62	4.19	2.57	2.71	13.51	0.42	0.31	0.20	1.88	1.38	1.75	5.93	0.44
H+V	1	6.48	5.01	3.37	2.03	13.53	0.48	0.37	0.15	2.61	2.31	1.22	7.14	0.53
H+V	2	7.46	6.56	4.19	0.96	14.08	0.53	0.47	0.07	2.85	2.77	0.50	8.04	0.57
H+V	3	8.69	5.60	3.84	0.93	13.93	0.62	0.40	0.07	4.35	2.56	0.51	7.79	0.56
H+V	4	7.29	6.16	3.96	1.00	14.32	0.51	0.43	0.07	2.82	2.59	0.45	8.42	0.59
H+V	5	6.12	5.39	3.42	3.04	13.28	0.46	0.41	0.23	2.34	2.09	1.23	7.26	0.55
H+V	6	5.84	4.68	2.80	2.80	14.69	0.40	0.32	0.19	1.98	1.74	1.83	6.45	0.44

**Table 2-4** Simulated averaged PD over 4 [cm<sup>2</sup>] area on Plane A Module - n260 High Channel.

PD Simulation(W/m <sup>2</sup> )		High Channel												
		2mm					58.04%	44.36%	24.35%	10mm				62.81%
		S1	S2	S2	S4	S5	S1/S5	S2/S5	S4/S5	S1	S2	S4	S5	S5/S5
Pol	Beam ID	front	back	back(CB)	left	top				front	back	left	top	10mm/2mm
H	0	2.84	2.00	1.18	1.05	7.41	0.38	0.27	0.14	0.97	0.64	0.72	3.08	0.42
H	1	3.29	2.17	1.50	1.00	7.03	0.47	0.31	0.14	1.39	0.93	0.62	3.76	0.53
H	2	3.49	2.00	1.37	0.36	6.39	0.55	0.31	0.06	1.38	0.87	0.19	3.50	0.55
H	3	3.13	2.35	1.75	0.48	6.43	0.49	0.37	0.07	1.46	1.24	0.27	3.27	0.51
H	4	2.60	2.33	1.61	0.44	5.91	0.44	0.39	0.07	1.15	1.09	0.28	2.96	0.50
H	5	2.49	2.48	1.41	1.46	6.04	0.41	0.41	0.24	1.00	0.84	0.65	3.24	0.54
H	6	2.13	2.20	1.24	1.49	6.84	0.31	0.32	0.22	0.85	0.65	1.00	2.59	0.38
V	0	1.88	1.99	1.09	1.04	6.37	0.30	0.31	0.16	0.81	0.57	0.66	2.52	0.40
V	1	2.57	2.30	1.30	0.68	6.02	0.43	0.38	0.11	1.13	0.78	0.46	3.25	0.54
V	2	3.23	2.67	1.90	0.20	6.90	0.47	0.39	0.03	1.39	1.32	0.12	3.51	0.51
V	3	3.83	2.43	1.79	0.35	7.07	0.54	0.34	0.05	1.77	1.23	0.19	3.79	0.54
V	4	4.20	2.54	1.62	0.32	7.23	0.58	0.35	0.04	1.54	0.97	0.07	4.54	0.63
V	5	3.31	2.32	1.40	1.42	7.14	0.46	0.33	0.20	1.33	0.89	0.53	3.85	0.54
V	6	3.39	2.11	1.32	1.40	7.90	0.43	0.27	0.18	1.12	0.66	0.90	3.65	0.46
H+V	0	4.86	4.89	2.80	2.99	14.87	0.33	0.33	0.20	1.84	1.59	1.91	6.38	0.43
H+V	1	6.14	4.94	3.09	2.76	14.03	0.44	0.35	0.20	2.78	1.93	1.80	8.15	0.58
H+V	2	7.87	5.80	4.15	0.76	13.86	0.57	0.42	0.05	3.46	2.70	0.36	7.62	0.55
H+V	3	8.42	5.34	3.90	1.09	14.65	0.58	0.36	0.07	4.48	2.78	0.67	7.57	0.52
H+V	4	7.82	6.01	4.04	0.77	13.55	0.58	0.44	0.06	3.21	2.29	0.48	8.00	0.59
H+V	5	6.39	5.27	3.11	3.49	14.47	0.44	0.36	0.24	2.64	1.89	1.35	8.29	0.57
H+V	6	5.54	5.03	3.16	3.92	16.10	0.34	0.31	0.24	2.00	1.86	2.52	7.86	0.49

**Table 2-5** Simulated averaged PD over 4 [cm<sup>2</sup>] area on Plane B Module - n260 Low Channel.

PD Simulation(W/m <sup>2</sup> )		Low Channel												
		2mm					5.03%	29.30%	44.93%	10mm				64.72%
		S1	S2	S2	S4	S5	S1/S2	S4/S2	S5/S2	S1	S2	S4	S5	S2/S2
Pol	Beam ID	front	back	back(CB)	left	top				front	back	left	top	
H	0	0.15	6.56	4.68	0.74	2.38	0.02	0.11	0.36	0.07	3.22	0.34	0.72	0.49
H	1	0.15	6.62	4.38	0.63	2.41	0.02	0.09	0.36	0.07	2.69	0.30	0.70	0.41
H	2	0.24	5.98	4.67	0.44	2.17	0.04	0.07	0.36	0.12	3.50	0.25	1.09	0.59
H	3	0.24	5.81	4.58	0.33	2.61	0.04	0.06	0.45	0.12	3.38	0.18	0.83	0.58
H	4	0.27	6.36	5.39	0.19	2.77	0.04	0.03	0.43	0.14	4.12	0.11	1.11	0.65
H	5	0.21	6.62	4.88	1.94	1.70	0.03	0.29	0.26	0.12	3.47	0.91	0.93	0.52
H	6	0.22	7.34	5.10	2.05	1.67	0.03	0.28	0.23	0.09	3.16	1.23	0.69	0.43
V	0	0.31	6.95	5.01	1.03	1.51	0.04	0.15	0.22	0.15	3.29	0.69	1.12	0.47
V	1	0.31	6.76	5.05	0.81	1.83	0.05	0.12	0.27	0.17	3.48	0.54	1.10	0.51
V	2	0.22	5.86	4.93	0.39	2.40	0.04	0.07	0.41	0.11	3.77	0.20	0.97	0.64
V	3	0.25	5.69	4.41	0.35	2.05	0.04	0.06	0.36	0.14	3.40	0.18	0.71	0.60
V	4	0.19	6.00	4.69	0.32	2.00	0.03	0.05	0.33	0.09	3.53	0.15	0.80	0.59
V	5	0.31	6.12	3.53	0.95	1.56	0.05	0.16	0.25	0.15	2.42	0.33	0.68	0.40
V	6	0.19	6.17	4.12	0.79	2.06	0.03	0.13	0.33	0.08	2.88	0.36	0.51	0.47
H+V	0	0.57	15.85	10.94	2.05	4.23	0.04	0.13	0.27	0.31	7.22	1.18	2.11	0.46
H+V	1	0.66	14.23	10.22	1.83	5.17	0.05	0.13	0.36	0.33	7.10	1.06	2.46	0.50
H+V	2	0.59	12.29	10.07	1.29	5.50	0.05	0.11	0.45	0.31	7.90	0.75	2.23	0.64
H+V	3	0.63	12.68	9.88	1.01	5.55	0.05	0.08	0.44	0.32	7.42	0.57	1.75	0.58
H+V	4	0.55	13.70	11.07	0.69	5.97	0.04	0.05	0.44	0.32	8.33	0.39	2.24	0.61
H+V	5	0.69	14.56	9.22	3.32	3.89	0.05	0.23	0.27	0.30	6.71	1.61	1.99	0.46
H+V	6	0.49	16.39	10.65	3.52	3.96	0.03	0.21	0.24	0.25	6.54	2.21	1.73	0.40

**Table 2-6** Simulated averaged PD over 4 [cm<sup>2</sup>] area on Plane B Module - n260 Mid Channel.

PD Simulation(W/m <sup>2</sup> )		Mid Channel												
		2mm					7.55%	28.20%	37.62%	10mm				65.57%
		S1	S2	S2	S4	S5	S1/S2	S4/S2	S5/S2	S1	S2	S4	S5	S2/S2
		front	back	back(CB)	left	top				front	back	left	top	10mm/2mm
H	0	0.17	6.40	4.65	1.10	1.21	0.03	0.17	0.19	0.08	3.33	0.57	0.62	0.52
H	1	0.20	7.15	4.71	0.91	1.32	0.03	0.13	0.18	0.09	2.93	0.46	0.54	0.41
H	2	0.31	5.45	4.22	0.37	1.78	0.06	0.07	0.33	0.16	3.10	0.18	0.94	0.57
H	3	0.30	5.42	4.38	0.33	1.69	0.06	0.06	0.31	0.15	3.27	0.20	0.70	0.60
H	4	0.19	5.34	4.47	0.26	1.64	0.04	0.05	0.31	0.10	3.50	0.12	0.86	0.66
H	5	0.22	6.55	4.76	1.80	1.57	0.03	0.27	0.24	0.10	3.41	0.66	0.84	0.52
H	6	0.19	7.12	5.09	2.01	1.54	0.03	0.28	0.22	0.10	3.09	1.28	0.74	0.43
V	0	0.21	7.21	4.97	0.88	1.69	0.03	0.12	0.24	0.11	3.22	0.59	0.81	0.45
V	1	0.23	6.41	4.65	0.68	1.57	0.04	0.11	0.24	0.13	3.08	0.46	0.77	0.48
V	2	0.22	5.13	4.22	0.33	1.48	0.04	0.06	0.29	0.12	3.20	0.18	0.63	0.63
V	3	0.35	5.42	4.27	0.43	1.60	0.06	0.08	0.30	0.17	3.27	0.22	0.67	0.60
V	4	0.22	5.64	4.44	0.42	1.36	0.04	0.07	0.24	0.09	3.33	0.13	0.76	0.59
V	5	0.25	7.46	3.94	1.02	1.49	0.03	0.14	0.20	0.12	2.62	0.33	0.84	0.35
V	6	0.27	6.39	4.51	1.04	1.36	0.04	0.16	0.21	0.12	3.17	0.43	0.63	0.50
H+V	0	0.55	15.01	9.88	2.62	3.05	0.04	0.17	0.20	0.31	6.41	1.44	1.49	0.43
H+V	1	0.55	15.34	9.81	2.13	3.01	0.04	0.14	0.20	0.26	6.47	1.27	1.43	0.42
H+V	2	0.78	11.45	9.13	1.10	4.31	0.07	0.10	0.38	0.47	6.91	0.62	2.33	0.60
H+V	3	0.88	11.69	9.21	1.10	4.38	0.08	0.09	0.37	0.46	6.94	0.68	1.59	0.59
H+V	4	0.53	12.15	9.66	0.83	3.48	0.04	0.07	0.29	0.24	7.52	0.39	2.01	0.62
H+V	5	0.59	16.40	9.21	3.78	4.02	0.04	0.23	0.25	0.27	6.53	1.37	2.09	0.40
H+V	6	0.64	15.19	10.30	3.90	3.16	0.04	0.26	0.21	0.32	6.36	2.25	1.52	0.42

**Table 2-7** Simulated averaged PD over 4 [cm<sup>2</sup>] area on Plane B Module - n260 High Channel.

PD Simulation(W/m <sup>2</sup> )		High Channel												
		2mm					7.94%	22.44%	34.91%	10mm				58.76%
		S1	S2	S2	S4	S5	S1/S2	S4/S2	S5/S2	S1	S2	S4	S5	S2/S2
Pol	Beam ID	front	back	back(CB)	left	top				front	back	left	top	10mm/2mm
H	0	0.27	5.80	4.12	0.90	1.54	0.05	0.15	0.27	0.13	2.90	0.56	0.68	0.50
H	1	0.23	6.06	3.87	1.12	1.30	0.04	0.18	0.21	0.11	2.36	0.60	0.57	0.39
H	2	0.28	4.47	3.29	0.60	1.24	0.06	0.13	0.28	0.15	2.39	0.24	0.57	0.53
H	3	0.35	4.71	3.61	0.27	1.24	0.07	0.06	0.26	0.18	2.68	0.15	0.60	0.57
H	4	0.30	4.53	3.36	0.29	1.21	0.07	0.06	0.27	0.15	2.64	0.11	0.51	0.58
H	5	0.27	5.81	3.98	0.86	1.35	0.05	0.15	0.23	0.13	2.68	0.38	0.58	0.46
H	6	0.27	5.74	4.13	1.29	1.14	0.05	0.22	0.20	0.11	2.32	0.87	0.52	0.40
V	0	0.22	6.00	4.19	0.84	1.00	0.04	0.14	0.17	0.09	2.49	0.76	0.50	0.41
V	1	0.21	5.96	4.56	0.64	1.25	0.04	0.11	0.21	0.12	3.21	0.47	0.62	0.54
V	2	0.25	5.02	3.76	0.39	1.21	0.05	0.08	0.24	0.14	2.70	0.17	0.46	0.54
V	3	0.31	5.06	3.88	0.27	1.56	0.06	0.05	0.31	0.18	2.80	0.15	0.87	0.55
V	4	0.23	5.47	4.13	0.43	1.40	0.04	0.08	0.26	0.12	2.93	0.11	0.68	0.54
V	5	0.23	6.55	3.73	0.82	1.47	0.04	0.12	0.22	0.11	2.54	0.32	0.79	0.39
V	6	0.28	5.96	4.30	0.78	1.56	0.05	0.13	0.26	0.15	3.18	0.30	0.65	0.53
H+V	0	0.56	12.99	8.86	2.15	2.95	0.04	0.17	0.23	0.31	6.06	1.38	1.34	0.47
H+V	1	0.65	13.65	9.30	2.19	2.84	0.05	0.16	0.21	0.27	6.47	1.44	1.33	0.47
H+V	2	0.63	11.06	8.07	1.35	2.76	0.06	0.12	0.25	0.39	5.91	0.64	1.37	0.53
H+V	3	0.85	10.74	7.59	0.89	3.75	0.08	0.08	0.35	0.46	5.65	0.46	1.76	0.53
H+V	4	0.55	10.72	8.06	0.70	2.69	0.05	0.07	0.25	0.28	6.30	0.29	1.38	0.59
H+V	5	0.60	14.23	8.01	2.11	3.03	0.04	0.15	0.21	0.29	6.03	1.12	1.65	0.42
H+V	6	0.60	13.24	9.03	2.50	2.81	0.05	0.19	0.21	0.31	5.73	1.42	1.43	0.43

**Table 2-8** Simulated averaged PD over 4 [cm<sup>2</sup>] area on Plane A Module - n261 Low Channel.

PD Simulation(W/m <sup>2</sup> )		Low Channel												
		2mm					70.49%	49.87%	18.99%	10mm				64.78%
		S1	S2	S2	S4	S5	S1/S5	S2/S5	S4/S5	S1	S2	S4	S5	S5/S5
Pol	Beam ID	front	back	back(CB)	left	top				front	back	left	top	10mm/2mm
H	0	3.28	2.44	1.69	0.50	7.33	0.45	0.33	0.07	1.18	1.03	0.21	3.22	0.44
H	1	4.46	2.66	1.90	0.43	8.77	0.51	0.30	0.05	1.74	1.23	0.18	4.24	0.48
H	2	5.41	2.82	1.94	0.41	9.29	0.58	0.30	0.04	2.68	1.19	0.22	5.03	0.54
H	3	5.60	2.90	1.92	0.61	9.52	0.59	0.31	0.06	2.56	1.12	0.31	5.48	0.58
H	4	5.78	2.63	1.81	0.49	10.16	0.57	0.26	0.05	2.60	1.14	0.25	5.34	0.53
H	5	3.68	2.51	1.37	0.94	7.72	0.48	0.32	0.13	1.44	0.77	0.40	3.62	0.47
H	6	4.02	2.46	1.51	1.39	7.91	0.51	0.31	0.18	1.90	1.10	0.75	3.61	0.46
V	0	3.77	2.31	1.42	0.47	7.76	0.49	0.30	0.08	1.33	0.87	0.24	3.26	0.42
V	1	3.71	2.50	1.51	0.44	7.92	0.47	0.32	0.08	1.29	0.87	0.26	3.33	0.42
V	2	4.64	2.68	1.90	0.82	8.74	0.53	0.31	0.09	1.98	1.21	0.52	4.77	0.55
V	3	5.24	2.52	1.78	0.72	8.57	0.61	0.29	0.08	2.53	1.15	0.27	4.98	0.58
V	4	3.12	3.26	2.17	0.51	6.55	0.48	0.50	0.08	1.16	1.42	0.30	3.52	0.54
V	5	2.64	2.98	1.94	0.87	6.07	0.44	0.49	0.17	1.04	1.14	0.42	3.12	0.51
V	6	2.37	2.35	1.46	0.70	5.27	0.45	0.45	0.17	0.77	0.78	0.43	2.53	0.48
H+V	0	9.08	5.43	3.77	1.43	18.08	0.50	0.30	0.09	3.63	2.65	0.67	8.20	0.45
H+V	1	10.66	6.17	4.41	1.36	19.90	0.54	0.31	0.08	4.32	2.74	0.75	9.43	0.47
H+V	2	14.70	6.72	4.70	1.93	22.80	0.64	0.29	0.08	7.16	2.98	1.18	13.66	0.60
H+V	3	16.63	6.97	4.53	1.87	23.60	0.70	0.30	0.09	7.94	2.72	0.92	15.29	0.65
H+V	4	12.27	6.37	4.38	1.43	20.31	0.60	0.31	0.08	5.49	2.76	0.68	12.06	0.59
H+V	5	8.36	6.05	4.00	2.46	16.19	0.52	0.37	0.17	3.49	2.48	1.15	8.56	0.53
H+V	6	8.82	5.52	3.88	2.61	15.41	0.57	0.36	0.19	3.84	2.71	1.52	7.79	0.51

**Table 2-9** Simulated averaged PD over 4 [cm<sup>2</sup>] area on Plane A Module - n261 Mid Channel.

PD Simulation(W/m <sup>2</sup> )		Middle Channel												
		2mm					76.56%	41.71%	18.99%	10mm				65.80%
		S1	S2	S2	S4	S5	S1/S5	S2/S5	S4/S5	S1	S2	S4	S5	S5/S5
Pol	Beam ID	front	back	back(CB)	left	top				front	back	left	top	10mm/2mm
H	0	3.79	2.52	1.77	0.51	7.99	0.47	0.32	0.07	1.40	1.09	0.19	3.56	0.45
H	1	4.62	2.65	1.93	0.35	8.92	0.52	0.30	0.05	1.87	1.27	0.16	4.30	0.48
H	2	5.97	2.89	2.03	0.35	9.76	0.61	0.30	0.04	2.80	1.31	0.21	5.57	0.57
H	3	6.33	2.95	1.98	0.57	10.11	0.63	0.29	0.06	2.91	1.20	0.31	6.10	0.60
H	4	5.79	2.61	1.81	0.53	10.12	0.57	0.26	0.05	2.53	1.18	0.26	5.41	0.53
H	5	3.73	2.57	1.56	0.97	7.92	0.47	0.32	0.13	1.39	0.90	0.38	3.80	0.48
H	6	4.12	2.48	1.61	1.44	8.06	0.51	0.31	0.18	1.93	1.09	0.76	3.77	0.47
V	0	3.65	2.21	1.35	0.58	7.77	0.47	0.28	0.08	1.39	0.85	0.28	3.07	0.40
V	1	3.67	2.30	1.37	0.56	7.91	0.46	0.29	0.08	1.35	0.83	0.30	3.16	0.40
V	2	5.01	2.51	1.80	0.82	8.98	0.56	0.28	0.09	2.21	1.20	0.51	4.78	0.53
V	3	5.71	2.24	1.58	0.70	8.56	0.67	0.26	0.08	2.82	1.06	0.26	5.05	0.59
V	4	3.59	2.78	1.85	0.46	6.66	0.54	0.42	0.08	1.35	1.23	0.23	3.58	0.54
V	5	3.23	2.78	1.97	1.07	7.14	0.45	0.39	0.17	1.22	1.24	0.55	3.35	0.47
V	6	2.91	2.32	1.50	0.99	6.45	0.45	0.36	0.17	0.89	0.89	0.56	2.86	0.44
H+V	0	9.80	5.51	3.87	1.70	18.89	0.52	0.29	0.09	4.09	2.41	0.69	8.13	0.43
H+V	1	11.03	6.05	4.38	1.54	20.13	0.55	0.30	0.08	4.65	2.80	0.76	9.03	0.45
H+V	2	15.38	6.02	4.31	1.84	22.66	0.68	0.27	0.08	7.44	2.93	1.13	13.76	0.61
H+V	3	17.80	6.45	3.74	1.98	23.25	0.77	0.28	0.09	8.66	2.50	0.99	15.30	0.66
H+V	4	12.61	5.81	4.01	1.64	19.90	0.63	0.29	0.08	5.54	2.69	0.79	11.71	0.59
H+V	5	9.16	5.92	4.16	2.74	17.36	0.53	0.34	0.17	3.62	2.79	1.35	8.85	0.51
H+V	6	9.56	5.16	3.58	2.91	16.49	0.58	0.31	0.19	4.06	2.39	1.65	8.14	0.49

**Table 2-10** Simulated averaged *PD* over 4 [cm<sup>2</sup>] area on Plane A Module - n261 High Channel.

PD Simulation(W/m <sup>2</sup> )		High Channel												
		2mm					79.58%	37.21%	18.99%	10mm				65.94%
		S1	S2	S2	S4	S5	S1/S5	S2/S5	S4/S5	S1	S2	S4	S5	S5/S5
Pol	Beam ID	front	back	back(CB)	left	top				front	back	left	top	10mm/2mm
H	0	4.18	2.51	1.82	0.48	8.38	0.50	0.30	0.07	1.56	1.14	0.16	3.75	0.45
H	1	4.76	2.49	1.86	0.31	9.01	0.53	0.28	0.05	1.93	1.27	0.14	4.29	0.48
H	2	6.58	2.61	1.80	0.34	9.84	0.67	0.26	0.04	3.05	1.16	0.17	5.85	0.59
H	3	6.81	2.71	1.78	0.47	10.20	0.67	0.27	0.06	3.24	1.02	0.25	6.24	0.61
H	4	6.00	2.50	1.70	0.47	10.26	0.58	0.24	0.05	2.68	1.09	0.22	5.53	0.54
H	5	3.78	2.37	1.47	0.99	7.90	0.48	0.30	0.13	1.44	0.88	0.39	3.83	0.48
H	6	4.00	2.46	1.52	1.44	7.94	0.50	0.31	0.18	1.93	0.94	0.71	3.80	0.48
V	0	3.53	2.33	1.35	0.64	7.98	0.44	0.29	0.08	1.37	0.81	0.28	3.09	0.39
V	1	3.63	2.37	1.41	0.61	8.14	0.45	0.29	0.08	1.36	0.81	0.30	3.19	0.39
V	2	5.23	2.38	1.68	0.83	9.36	0.56	0.25	0.09	2.43	1.14	0.53	4.98	0.53
V	3	5.80	2.15	1.46	0.61	8.80	0.66	0.24	0.08	3.02	1.01	0.25	5.18	0.59
V	4	3.84	2.49	1.66	0.56	7.14	0.54	0.35	0.08	1.50	1.11	0.28	3.88	0.54
V	5	3.91	3.04	2.23	1.36	8.17	0.48	0.37	0.17	1.46	1.39	0.71	3.87	0.47
V	6	3.54	2.71	1.90	1.31	7.49	0.47	0.36	0.17	1.10	1.12	0.75	3.43	0.46
H+V	0	10.17	6.04	4.28	1.72	19.14	0.53	0.32	0.09	4.24	2.63	0.64	8.08	0.42
H+V	1	10.91	6.24	4.61	1.51	19.92	0.55	0.31	0.08	4.64	3.06	0.70	8.66	0.43
H+V	2	15.56	5.39	4.05	1.75	22.20	0.70	0.24	0.08	7.75	2.88	1.06	13.53	0.61
H+V	3	17.98	5.86	3.97	1.74	22.60	0.80	0.26	0.09	9.31	2.69	0.88	14.90	0.66
H+V	4	12.63	5.37	3.53	1.66	19.78	0.64	0.27	0.08	5.77	2.38	0.81	11.58	0.59
H+V	5	9.95	5.71	3.95	3.00	17.87	0.56	0.32	0.17	3.91	2.72	1.52	9.18	0.51
H+V	6	9.85	5.62	3.60	3.21	16.88	0.58	0.33	0.19	4.11	2.25	1.78	8.55	0.51

**Table 2-11** Simulated averaged *PD* over 4 [cm<sup>2</sup>] area on Plane B Module - n261 Low Channel.

PD Simulation(W/m <sup>2</sup> )		Low Channel												
		2mm					10.03%	28.48%	37.15%	10mm				57.81%
		S1	S2	S2	S4	S5	S1/S2	S4/S2	S5/S2	S1	S2	S4	S5	S2/S2
Pol	Beam ID	front	back	back(CB)	left	top				front	back	left	top	10mm/2mm
H	0	0.57	7.88	4.37	1.48	2.62	0.07	0.19	0.33	0.26	2.37	0.81	0.94	0.30
H	1	0.54	10.73	5.92	0.76	2.00	0.05	0.07	0.19	0.25	3.47	0.38	0.90	0.32
H	2	0.46	11.66	6.82	0.96	2.65	0.04	0.08	0.23	0.21	4.26	0.48	1.45	0.37
H	3	0.56	9.28	5.95	0.65	2.33	0.06	0.07	0.25	0.29	4.37	0.28	1.36	0.47
H	4	0.63	9.79	6.85	0.75	2.76	0.06	0.08	0.28	0.29	5.26	0.48	1.38	0.54
H	5	0.61	9.45	5.73	2.69	2.25	0.06	0.28	0.24	0.27	3.44	1.41	1.00	0.36
H	6	0.55	9.07	5.41	2.34	2.71	0.06	0.26	0.30	0.21	3.36	1.43	1.01	0.37
V	0	0.87	8.70	5.54	1.78	3.00	0.10	0.20	0.34	0.42	4.19	0.92	1.44	0.48
V	1	0.81	9.23	6.82	1.03	3.43	0.09	0.11	0.37	0.42	5.17	0.50	1.63	0.56
V	2	0.76	10.95	7.78	0.64	3.19	0.07	0.06	0.29	0.42	5.50	0.28	1.65	0.50
V	3	0.54	9.62	6.13	1.32	2.43	0.06	0.14	0.25	0.29	4.47	0.60	1.35	0.46
V	4	0.34	10.12	7.05	0.50	2.59	0.03	0.05	0.26	0.18	4.86	0.22	1.60	0.48
V	5	0.45	10.36	6.20	1.61	2.27	0.04	0.16	0.22	0.23	4.14	0.52	1.31	0.40
V	6	0.47	10.10	5.47	1.42	2.19	0.05	0.14	0.22	0.27	3.10	0.75	1.10	0.31
H+V	0	1.90	19.46	12.99	3.61	6.70	0.10	0.19	0.34	1.03	9.09	1.95	3.10	0.47
H+V	1	1.88	23.50	15.75	3.02	6.96	0.08	0.13	0.30	1.15	11.13	1.55	3.91	0.47
H+V	2	1.64	23.43	16.28	2.94	6.02	0.07	0.13	0.26	0.79	11.37	1.39	3.61	0.49
H+V	3	1.40	21.34	16.11	3.37	5.15	0.07	0.16	0.24	0.85	12.34	1.49	3.25	0.58
H+V	4	1.12	20.32	15.20	2.06	6.54	0.06	0.10	0.32	0.57	11.30	1.22	3.97	0.56
H+V	5	1.78	23.15	14.74	5.39	5.58	0.08	0.23	0.24	0.94	9.67	2.63	2.85	0.42
H+V	6	1.20	24.32	14.43	5.43	7.01	0.05	0.22	0.29	0.63	8.78	3.31	3.11	0.36

**Table 2-12** Simulated averaged *PD* over 4 [cm<sup>2</sup>] area on Plane B Module - n261 Mid Channel.

PD Simulation(W/m^2)		Middle Channel												
		2mm					10.74%	29.10%	42.45%	10mm				55.40%
		S1	S2	S2	S4	S5	S1/S2	S4/S2	S5/S2	S1	S2	S4	S5	S2/S2
		front	back	back(CB)	left	top				front	back	left	top	10mm/2mm
H	0	0.65	7.93	4.69	1.33	3.37	0.08	0.17	0.42	0.25	2.67	0.73	1.16	0.34
H	1	0.53	11.00	6.57	0.83	2.21	0.05	0.08	0.20	0.21	3.98	0.45	0.83	0.36
H	2	0.44	11.61	6.90	1.05	2.76	0.04	0.09	0.24	0.22	4.35	0.52	1.63	0.37
H	3	0.57	9.72	6.11	0.79	2.63	0.06	0.08	0.27	0.33	4.43	0.35	1.61	0.46
H	4	0.58	10.16	7.20	0.66	2.82	0.06	0.06	0.28	0.31	5.50	0.39	1.50	0.54
H	5	0.53	9.97	6.06	2.90	2.15	0.05	0.29	0.22	0.25	3.68	1.51	1.03	0.37
H	6	0.53	9.76	5.97	2.60	2.56	0.05	0.27	0.26	0.23	3.73	1.58	1.12	0.38
V	0	0.90	8.34	5.28	2.06	2.81	0.11	0.25	0.34	0.42	3.96	1.16	1.39	0.47
V	1	0.67	9.45	6.94	1.04	3.10	0.07	0.11	0.33	0.33	5.24	0.50	1.54	0.55
V	2	0.69	11.40	8.09	0.54	3.48	0.06	0.05	0.31	0.42	5.78	0.25	1.90	0.51
V	3	0.68	9.95	6.14	1.10	2.87	0.07	0.11	0.29	0.41	4.45	0.54	1.67	0.45
V	4	0.41	10.08	6.91	0.55	2.71	0.04	0.05	0.27	0.24	4.80	0.26	1.75	0.48
V	5	0.46	10.05	6.18	1.39	2.58	0.05	0.14	0.26	0.25	4.09	0.66	1.53	0.41
V	6	0.50	9.50	5.26	1.65	2.81	0.05	0.17	0.30	0.24	3.01	0.92	1.52	0.32
H+V	0	1.87	18.18	11.91	3.27	7.33	0.10	0.18	0.40	0.96	8.42	1.68	3.37	0.46
H+V	1	1.62	22.33	15.29	3.16	6.62	0.07	0.14	0.30	0.93	11.21	1.73	3.54	0.50
H+V	2	1.55	24.32	16.80	2.85	6.48	0.06	0.12	0.27	0.82	11.79	1.41	3.81	0.48
H+V	3	1.57	21.99	15.43	3.16	5.87	0.07	0.14	0.27	0.98	11.89	1.51	3.85	0.54
H+V	4	1.12	21.63	15.86	2.06	6.34	0.05	0.10	0.29	0.63	11.66	1.20	4.11	0.54
H+V	5	1.51	23.19	15.18	5.12	5.69	0.06	0.22	0.25	0.83	10.09	2.60	2.93	0.44
H+V	6	1.24	23.29	14.33	5.32	7.13	0.05	0.23	0.31	0.56	9.11	3.34	3.40	0.39

**Table 2-13** Simulated averaged *PD* over 4 [cm<sup>2</sup>] area on Plane B Module - n261 High Channel.

PD Simulation(W/m <sup>2</sup> )		High Channel												
		2mm					9.22%	27.55%	48.61%	10mm				55.20%
		S1	S2	S2	S4	S5	S1/S2	S4/S2	S5/S2	S1	S2	S4	S5	S2/S2
Pol	Beam ID	front	back	back(CB)	left	top				front	back	left	top	10mm/2mm
H	0	0.75	8.32	4.84	1.17	4.04	0.09	0.14	0.49	0.27	2.86	0.63	1.40	0.34
H	1	0.53	10.99	6.86	0.94	2.51	0.05	0.09	0.23	0.21	4.29	0.45	0.96	0.39
H	2	0.43	11.60	7.04	1.09	2.84	0.04	0.09	0.25	0.22	4.57	0.55	1.76	0.39
H	3	0.60	10.36	6.42	0.88	2.99	0.06	0.08	0.29	0.35	4.46	0.42	1.91	0.43
H	4	0.65	10.22	7.29	0.72	2.96	0.06	0.07	0.29	0.36	5.64	0.32	1.62	0.55
H	5	0.50	9.99	5.83	2.75	2.16	0.05	0.28	0.22	0.25	3.79	1.36	1.15	0.38
H	6	0.51	9.77	6.23	2.62	2.35	0.05	0.27	0.24	0.23	4.18	1.69	1.14	0.43
V	0	0.81	8.75	5.75	1.89	2.46	0.09	0.22	0.28	0.41	4.30	1.16	1.31	0.49
V	1	0.65	9.65	7.03	1.11	2.86	0.07	0.12	0.30	0.31	5.30	0.57	1.42	0.55
V	2	0.65	10.95	7.75	0.42	3.37	0.06	0.04	0.31	0.41	5.67	0.20	1.96	0.52
V	3	0.73	10.20	6.53	0.95	2.96	0.07	0.09	0.29	0.45	4.76	0.51	1.88	0.47
V	4	0.52	10.06	6.82	0.63	2.72	0.05	0.06	0.27	0.30	4.87	0.29	1.85	0.48
V	5	0.48	10.08	6.15	1.42	2.55	0.05	0.14	0.25	0.27	4.08	0.56	1.62	0.40
V	6	0.47	9.27	5.21	1.66	2.86	0.05	0.18	0.31	0.24	3.08	0.95	1.57	0.33
H+V	0	1.61	19.09	12.40	3.06	8.20	0.08	0.16	0.43	0.84	8.60	1.52	3.95	0.45
H+V	1	1.64	22.23	15.95	3.00	6.61	0.07	0.13	0.30	0.83	11.47	1.73	3.38	0.52
H+V	2	1.40	24.56	16.82	2.47	6.40	0.06	0.10	0.26	0.75	12.01	1.24	4.05	0.49
H+V	3	1.67	23.10	15.42	2.84	6.47	0.07	0.12	0.28	1.06	11.69	1.44	4.49	0.51
H+V	4	1.32	22.50	16.05	1.91	6.58	0.06	0.08	0.29	0.78	11.93	1.10	4.32	0.53
H+V	5	1.44	23.01	14.90	5.12	6.07	0.06	0.22	0.26	0.78	10.29	2.43	3.02	0.45
H+V	6	1.26	22.32	13.97	5.03	6.80	0.06	0.23	0.30	0.59	9.24	3.20	3.18	0.41

**Table 2-14** Simulated averaged PD over 4 [cm<sup>2</sup>] area on Plane A Module - n258 Low Channel.

PD Simulation(W/m <sup>2</sup> )		Low Channel												
		2mm					67.03%	61.49%	18.99%	10mm				57.08%
		S1	S2	S2	S4	S5	S1/S5	S2/S5	S4/S5	S1	S2	S4	S5	S5/S5
Pol	Beam ID	front	back	back(CB)	left	top				front	back	left	top	10mm/2mm
H	0	3.26	3.08	2.11	0.62	5.97	0.55	0.52	0.07	1.16	1.36	0.44	2.41	0.40
H	1	4.30	4.01	2.40	0.69	8.81	0.49	0.45	0.05	1.72	1.57	0.45	4.20	0.48
H	2	4.50	3.55	2.38	0.50	8.14	0.55	0.44	0.04	2.08	1.59	0.29	4.06	0.50
H	3	5.80	5.02	3.74	0.38	11.22	0.52	0.45	0.06	2.79	2.73	0.25	5.49	0.49
H	4	4.89	5.61	4.10	0.78	10.48	0.47	0.54	0.05	2.34	2.67	0.31	5.66	0.54
H	5	5.27	5.79	4.24	1.84	12.54	0.42	0.46	0.13	1.87	2.75	0.85	5.41	0.43
H	6	5.01	4.49	2.66	1.18	10.80	0.46	0.42	0.18	2.04	1.40	0.67	3.73	0.35
V	0	4.02	3.79	2.27	0.36	7.69	0.52	0.49	0.08	2.04	1.23	0.13	3.26	0.42
V	1	5.76	3.12	2.19	0.62	10.75	0.54	0.29	0.08	2.66	1.48	0.28	4.83	0.45
V	2	5.79	4.33	3.42	0.63	11.96	0.48	0.36	0.09	2.70	2.69	0.39	5.04	0.42
V	3	6.26	3.91	2.94	0.38	10.55	0.59	0.37	0.08	3.13	2.08	0.20	5.28	0.50
V	4	5.63	2.98	1.75	1.04	9.18	0.61	0.32	0.08	2.78	1.05	0.43	4.43	0.48
V	5	4.91	3.99	2.72	1.03	10.28	0.48	0.39	0.17	1.63	2.04	0.46	3.88	0.38
V	6	2.69	3.93	2.60	0.89	6.40	0.42	0.61	0.17	0.90	1.65	0.59	2.36	0.37
H+V	0	9.69	9.37	6.28	1.19	16.10	0.60	0.58	0.09	4.49	4.27	0.82	7.54	0.47
H+V	1	14.94	9.39	6.70	1.37	26.51	0.56	0.35	0.08	7.15	4.57	0.93	14.32	0.54
H+V	2	16.20	9.34	7.19	1.73	25.52	0.63	0.37	0.08	7.89	5.37	1.23	13.99	0.55
H+V	3	19.51	11.00	8.12	1.28	29.10	0.67	0.38	0.09	9.71	6.01	0.81	16.61	0.57
H+V	4	15.84	11.74	8.39	2.02	25.11	0.63	0.47	0.08	7.81	5.37	0.91	14.28	0.57
H+V	5	14.11	12.82	9.18	3.89	26.87	0.53	0.48	0.17	5.77	5.40	1.85	11.95	0.44
H+V	6	9.85	11.90	7.88	2.47	19.35	0.51	0.61	0.19	4.03	5.05	1.64	8.12	0.42

**Table 2-15** Simulated averaged PD over 4 [cm<sup>2</sup>] area on Plane A Module - n258 Mid Channel.

PD Simulation(W/m <sup>2</sup> )		Mid Channel												
		2mm					66.90%	50.85%	18.99%	10mm				56.16%
		S1	S2	S2	S4	S5	S1/S5	S2/S5	S4/S5	S1	S2	S4	S5	S5/S5
Pol	Beam ID	front	back	back(CB)	left	top				front	back	left	top	10mm/2mm
H	0	3.72	3.25	2.37	0.95	6.55	0.57	0.50	0.07	1.19	1.62	0.52	2.69	0.41
H	1	5.43	4.01	2.41	0.75	9.86	0.55	0.41	0.05	2.23	1.43	0.57	4.75	0.48
H	2	5.20	3.83	2.57	0.61	8.90	0.58	0.43	0.04	2.49	1.66	0.41	4.53	0.51
H	3	6.60	4.76	3.47	0.35	11.95	0.55	0.40	0.06	3.33	2.56	0.22	5.78	0.48
H	4	5.65	4.86	3.54	0.76	10.97	0.51	0.44	0.05	2.89	2.41	0.40	5.50	0.50
H	5	6.18	5.47	4.02	1.69	12.90	0.48	0.42	0.13	2.25	2.70	0.88	5.33	0.41
H	6	5.99	4.26	2.75	1.41	11.59	0.52	0.37	0.18	2.60	1.43	0.76	4.34	0.37
V	0	4.51	3.61	2.21	0.30	8.43	0.54	0.43	0.08	2.18	1.31	0.16	3.52	0.42
V	1	6.23	3.40	2.20	0.63	11.38	0.55	0.30	0.08	2.78	1.23	0.30	5.25	0.46
V	2	6.32	4.00	3.01	0.83	12.60	0.50	0.32	0.09	2.89	2.31	0.43	5.47	0.43
V	3	6.65	4.31	3.20	0.33	11.41	0.58	0.38	0.08	3.36	2.18	0.21	5.74	0.50
V	4	5.96	3.59	2.17	1.10	10.02	0.59	0.36	0.08	2.84	1.30	0.48	4.96	0.50
V	5	5.51	3.77	2.34	1.24	11.04	0.50	0.34	0.17	1.82	1.50	0.62	4.49	0.41
V	6	3.23	3.67	2.40	0.88	7.21	0.45	0.51	0.17	1.16	1.38	0.53	2.89	0.40
H+V	0	11.53	9.04	6.58	1.92	18.25	0.63	0.50	0.09	5.13	4.36	1.08	8.85	0.48
H+V	1	17.43	9.62	6.87	1.67	29.20	0.60	0.33	0.08	8.34	4.19	1.23	15.90	0.54
H+V	2	18.20	9.45	7.15	1.72	28.35	0.64	0.33	0.08	9.16	5.18	1.12	15.33	0.54
H+V	3	22.02	10.73	8.04	1.12	32.92	0.67	0.33	0.09	11.41	6.09	0.73	18.49	0.56
H+V	4	18.28	11.74	8.50	2.14	28.05	0.65	0.42	0.08	9.19	5.62	0.90	15.70	0.56
H+V	5	16.61	12.06	8.79	3.97	28.81	0.58	0.42	0.17	6.73	5.45	2.02	13.39	0.46
H+V	6	11.68	10.48	6.81	3.17	21.57	0.54	0.49	0.19	4.85	4.47	1.80	9.65	0.45

**Table 2-16** Simulated averaged PD over 4 [cm<sup>2</sup>] area on Plane A Module - n258 High Channel.

PD Simulation(W/m <sup>2</sup> )		High Channel												
		2mm					64.00%	55.71%	18.99%	10mm				57.17%
		S1	S2	S2	S4	S5	S1/S5	S2/S5	S4/S5	S1	S2	S4	S5	S5/S5
		front	back	back(CB)	left	top				front	back	left	top	
Pol	Beam ID	front	back	back(CB)	left	top	S1/S5	S2/S5	S4/S5	front	back	left	top	10mm/2mm
H	0	3.85	3.23	2.22	1.22	6.85	0.56	0.47	0.07	1.19	1.44	0.52	2.97	0.43
H	1	5.59	4.42	2.68	0.89	10.05	0.56	0.44	0.05	2.36	1.43	0.46	4.63	0.46
H	2	4.64	5.32	3.59	0.77	9.55	0.49	0.56	0.04	2.21	2.33	0.37	4.74	0.50
H	3	6.51	5.40	3.99	0.39	12.79	0.51	0.42	0.06	3.09	2.76	0.19	6.26	0.49
H	4	5.94	4.48	3.31	0.44	11.26	0.53	0.40	0.05	2.74	2.18	0.22	6.06	0.54
H	5	6.73	5.08	3.32	1.40	12.74	0.53	0.40	0.13	2.48	2.01	0.77	5.70	0.45
H	6	6.12	4.56	2.78	1.58	11.64	0.53	0.39	0.18	2.52	1.46	0.89	4.74	0.41
V	0	4.55	4.07	2.55	0.31	8.63	0.53	0.47	0.08	2.29	1.40	0.18	3.52	0.41
V	1	6.33	3.61	2.31	0.54	11.40	0.56	0.32	0.08	2.96	1.27	0.27	5.46	0.48
V	2	6.80	3.40	2.38	0.84	12.62	0.54	0.27	0.09	3.19	1.77	0.48	5.67	0.45
V	3	6.75	4.32	3.14	0.37	11.64	0.58	0.37	0.08	3.58	2.18	0.23	5.72	0.49
V	4	5.20	4.90	2.97	0.90	9.89	0.53	0.50	0.08	2.56	1.83	0.47	4.82	0.49
V	5	5.41	4.05	2.46	1.16	10.92	0.50	0.37	0.17	1.77	1.36	0.67	4.70	0.43
V	6	3.26	3.53	2.41	0.90	7.22	0.45	0.49	0.17	1.20	1.23	0.54	2.88	0.40
H+V	0	11.90	9.23	6.55	2.11	19.25	0.62	0.48	0.09	5.29	4.17	1.05	9.13	0.47
H+V	1	18.02	8.82	6.35	1.89	28.91	0.62	0.31	0.08	8.91	3.99	0.94	15.47	0.54
H+V	2	18.20	10.71	8.02	1.71	29.47	0.62	0.36	0.08	9.21	5.72	0.90	15.50	0.53
H+V	3	22.20	11.28	8.41	1.21	34.69	0.64	0.33	0.09	11.39	6.00	0.68	19.05	0.55
H+V	4	17.33	11.41	8.12	1.96	27.52	0.63	0.41	0.08	8.59	5.14	0.90	15.73	0.57
H+V	5	17.71	12.39	8.23	4.05	28.80	0.61	0.43	0.17	7.22	4.68	2.05	13.86	0.48
H+V	6	12.78	10.95	7.45	3.57	23.12	0.55	0.47	0.19	4.91	4.39	2.02	10.53	0.46

**Table 2-17** Simulated averaged PD over 4 [cm<sup>2</sup>] area on Plane B Module - n258 Low Channel.

PD Simulation(W/m <sup>2</sup> )		Low Channel												
		2mm					9.60%	25.38%	44.66%	10mm				48.61%
		S1	S2	S2	S4	S5	S1/S2	S4/S2	S5/S2	S1	S2	S4	S5	S2/S2
Pol	Beam ID	front	back	back(CB)	left	top				front	back	left	top	10mm/2mm
H	0	0.52	9.53	6.27	1.02	2.75	0.05	0.11	0.29	0.25	4.27	0.43	1.57	0.45
H	1	0.54	10.12	6.53	0.30	3.64	0.05	0.03	0.36	0.27	4.03	0.12	1.97	0.40
H	2	0.53	9.77	6.86	1.01	3.48	0.05	0.10	0.36	0.23	4.69	0.53	2.00	0.48
H	3	0.56	10.68	7.32	0.78	3.95	0.05	0.07	0.37	0.22	4.95	0.40	2.28	0.46
H	4	0.37	8.50	6.06	0.74	3.13	0.04	0.09	0.37	0.19	4.13	0.39	1.79	0.49
H	5	0.67	9.11	5.91	2.04	3.01	0.07	0.22	0.33	0.29	3.96	0.89	1.33	0.44
H	6	0.55	9.54	5.93	2.42	2.53	0.06	0.25	0.26	0.31	3.81	1.13	1.18	0.40
V	0	0.69	10.65	6.73	0.55	4.34	0.06	0.05	0.41	0.33	4.18	0.31	2.47	0.39
V	1	0.81	9.62	6.00	0.59	4.30	0.08	0.06	0.45	0.42	3.63	0.33	2.00	0.38
V	2	0.48	9.66	6.87	0.74	4.14	0.05	0.08	0.43	0.22	4.50	0.36	2.49	0.47
V	3	0.51	11.04	7.55	0.79	4.10	0.05	0.07	0.37	0.21	5.10	0.35	2.28	0.46
V	4	0.67	9.77	6.10	0.84	4.17	0.07	0.09	0.43	0.26	3.85	0.36	2.12	0.39
V	5	0.81	8.47	4.29	0.96	3.59	0.10	0.11	0.42	0.34	2.47	0.45	1.43	0.29
V	6	0.35	8.68	4.57	0.90	2.54	0.04	0.10	0.29	0.17	2.50	0.53	1.60	0.29
H+V	0	1.36	22.28	15.01	2.14	7.48	0.06	0.10	0.34	0.66	10.14	1.00	4.08	0.45
H+V	1	1.99	25.18	16.05	1.14	9.64	0.08	0.05	0.38	1.05	9.96	0.64	5.27	0.40
H+V	2	1.74	24.70	16.26	2.43	8.77	0.07	0.10	0.36	0.83	10.86	1.26	5.48	0.44
H+V	3	1.56	23.84	15.41	2.51	8.65	0.07	0.11	0.36	0.63	10.83	1.11	5.14	0.45
H+V	4	1.45	25.62	16.88	2.05	10.18	0.06	0.08	0.40	0.68	11.21	0.97	6.08	0.44
H+V	5	1.88	21.46	14.02	4.26	8.20	0.09	0.20	0.38	0.93	9.68	1.72	3.47	0.45
H+V	6	1.25	25.23	15.48	5.46	7.56	0.05	0.22	0.30	0.87	9.63	2.38	3.17	0.38

**Table 2-18** Simulated averaged PD over 4 [cm<sup>2</sup>] area on Plane B Module - n258 Mid Channel.

PD Simulation(W/m <sup>2</sup> )		Mid Channel												
		2mm					8.82%	26.16%	40.49%	10mm				59.41%
		S1	S2	S2	S4	S5	S1/S2	S4/S2	S5/S2	S1	S2	S4	S5	S2/S2
Pol	Beam ID	front	back	back(CB)	left	top				front	back	left	top	10mm/2mm
H	0	0.45	9.79	6.74	1.15	2.57	0.05	0.12	0.26	0.19	4.45	0.49	1.19	0.45
H	1	0.59	10.62	6.69	0.39	3.72	0.06	0.04	0.35	0.29	4.07	0.17	2.04	0.38
H	2	0.59	9.50	6.55	1.13	3.06	0.06	0.12	0.32	0.28	4.48	0.65	1.62	0.47
H	3	0.53	11.12	7.78	0.87	3.72	0.05	0.08	0.33	0.20	5.44	0.53	1.93	0.49
H	4	0.43	9.40	6.96	0.91	3.29	0.05	0.10	0.35	0.19	4.85	0.45	1.78	0.52
H	5	0.70	9.96	6.67	2.08	3.67	0.07	0.21	0.37	0.29	4.35	1.02	1.69	0.44
H	6	0.55	9.99	6.70	2.61	2.99	0.05	0.26	0.30	0.26	4.39	1.43	1.33	0.44
V	0	0.70	10.79	6.99	0.67	3.79	0.06	0.06	0.35	0.36	4.59	0.32	2.22	0.43
V	1	0.75	10.14	6.72	0.58	4.11	0.07	0.06	0.40	0.42	4.27	0.29	1.97	0.42
V	2	0.46	10.22	7.41	0.84	3.58	0.04	0.08	0.35	0.22	5.37	0.33	2.10	0.53
V	3	0.44	11.11	8.23	1.12	3.97	0.04	0.10	0.36	0.17	6.00	0.40	2.19	0.54
V	4	0.73	10.68	6.75	0.70	4.22	0.07	0.07	0.39	0.35	4.49	0.28	2.12	0.42
V	5	0.75	9.32	4.98	1.09	3.36	0.08	0.12	0.36	0.34	2.76	0.48	1.49	0.30
V	6	0.46	8.46	4.60	1.00	2.83	0.05	0.12	0.33	0.16	2.56	0.62	1.40	0.30
H+V	0	1.39	23.67	15.63	2.46	7.87	0.06	0.10	0.33	0.73	10.79	1.01	4.58	0.46
H+V	1	1.89	27.01	17.72	1.45	9.52	0.07	0.05	0.35	1.07	11.63	0.51	5.45	0.43
H+V	2	1.74	24.18	16.06	2.98	7.86	0.07	0.12	0.33	0.85	11.20	1.51	5.04	0.46
H+V	3	1.18	23.03	17.72	3.27	9.18	0.05	0.14	0.40	0.50	13.68	1.49	5.44	0.59
H+V	4	1.57	25.25	16.28	2.05	8.96	0.06	0.08	0.35	0.73	10.85	1.05	5.48	0.43
H+V	5	1.91	21.61	14.22	4.26	8.57	0.09	0.20	0.40	0.87	9.66	1.73	3.32	0.45
H+V	6	1.38	25.60	16.24	5.68	8.30	0.05	0.22	0.32	0.74	10.19	2.90	3.63	0.40

**Table 2-19** Simulated averaged PD over 4 [cm<sup>2</sup>] area on Plane B Module - n258 High Channel.

PD Simulation(W/m <sup>2</sup> )		High Channel												
		2mm					10.29%	24.30%	43.82%	10mm				66.25%
		S1	S2	S2	S4	S5	S1/S2	S4/S2	S5/S2	S1	S2	S4	S5	S2/S2
Pol	Beam ID	front	back	back(CB)	left	top				front	back	left	top	10mm/2mm
H	0	0.56	10.57	7.22	0.91	2.81	0.05	0.09	0.27	0.24	4.49	0.44	1.12	0.43
H	1	0.57	11.16	7.34	0.42	3.63	0.05	0.04	0.33	0.28	4.67	0.21	2.07	0.42
H	2	0.51	9.79	6.95	1.10	2.71	0.05	0.11	0.28	0.27	4.96	0.54	1.35	0.51
H	3	0.40	11.14	8.13	0.80	3.17	0.04	0.07	0.28	0.17	6.09	0.50	1.75	0.55
H	4	0.58	10.30	7.39	0.97	3.42	0.06	0.09	0.33	0.29	5.33	0.36	1.87	0.52
H	5	0.78	11.51	7.85	2.30	4.65	0.07	0.20	0.40	0.37	4.93	1.13	2.19	0.43
H	6	0.61	11.28	7.58	2.74	3.65	0.05	0.24	0.32	0.25	5.13	1.63	1.71	0.45
V	0	0.57	11.54	7.86	0.85	3.50	0.05	0.07	0.30	0.26	5.45	0.41	1.80	0.47
V	1	0.65	11.26	7.97	0.72	4.13	0.06	0.06	0.37	0.32	5.36	0.37	1.87	0.48
V	2	0.44	11.16	8.16	1.18	3.35	0.04	0.11	0.30	0.16	6.14	0.53	1.86	0.55
V	3	0.42	11.22	8.55	1.43	3.91	0.04	0.13	0.35	0.18	6.40	0.55	2.29	0.57
V	4	0.70	11.11	7.33	0.64	4.06	0.06	0.06	0.37	0.36	5.01	0.26	2.15	0.45
V	5	0.72	9.55	5.58	1.23	2.66	0.07	0.13	0.28	0.36	2.79	0.55	1.15	0.29
V	6	0.51	8.48	5.42	1.14	3.07	0.06	0.13	0.36	0.22	3.60	0.63	1.23	0.42
H+V	0	1.35	25.36	16.40	2.40	7.71	0.05	0.09	0.30	0.65	10.65	1.09	4.61	0.42
H+V	1	1.57	26.60	17.99	1.60	8.39	0.06	0.06	0.32	0.74	12.52	0.72	4.83	0.47
H+V	2	1.37	23.59	16.75	3.89	7.27	0.06	0.16	0.31	0.68	12.51	1.82	4.40	0.53
H+V	3	1.00	24.08	20.43	3.81	10.17	0.04	0.16	0.42	0.49	15.96	1.82	5.81	0.66
H+V	4	1.35	24.90	16.15	1.82	8.33	0.05	0.07	0.33	0.74	11.39	0.87	5.12	0.46
H+V	5	2.28	22.12	14.41	4.64	9.69	0.10	0.21	0.44	1.19	8.89	1.84	3.90	0.40
H+V	6	1.64	26.50	17.51	6.06	9.08	0.06	0.23	0.34	0.73	11.49	3.25	4.27	0.43

### 3. References

- [1] [ANSYS HFSS for Antenna Simulation](#)