

P4

eMoMo®

User Manual



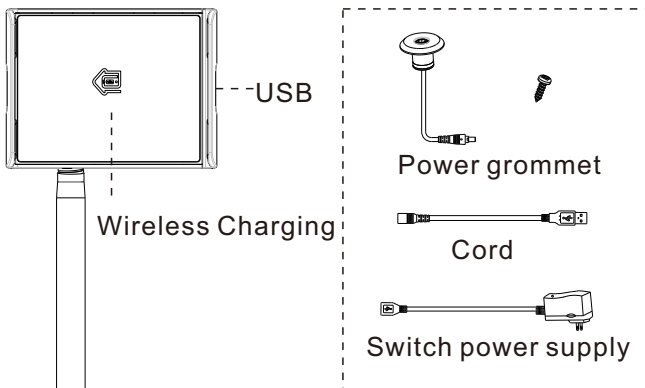
Caution

- Before use of unit, please read the Manual carefully.
- Keep the product away from water, liquid, or wet area.
- Keep the product away from naked flame.
- The unit should be powered off before unplugging.
- Do not place the product in direct sunlight or heat.

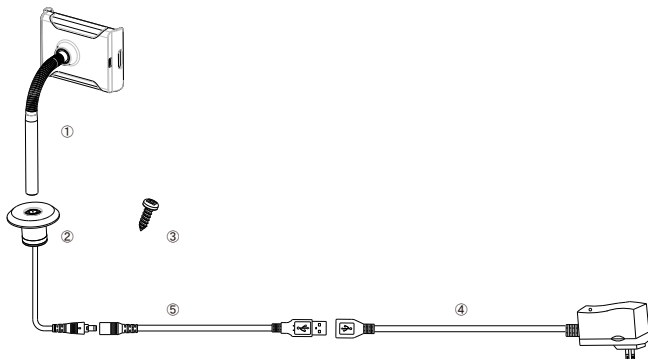
Keep away from temperatures over 35°C.

- Do not attempt to remove the unit. To remove panel or attempt to repair the unit could result in potential electric shock.
- Do not insert foreign objects into the product.
- Adult Supervision is recommended if children are using this product.

Wireless Charging Holder



Drawing



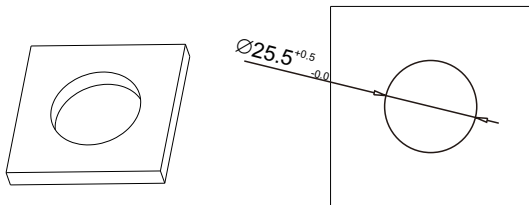
Specifications

Wireless Charging: 5V, 1A.

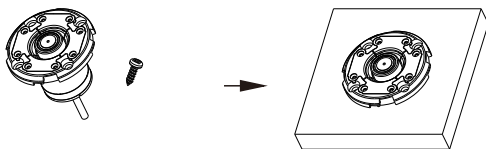
USB: 5V, 4A.

Installation

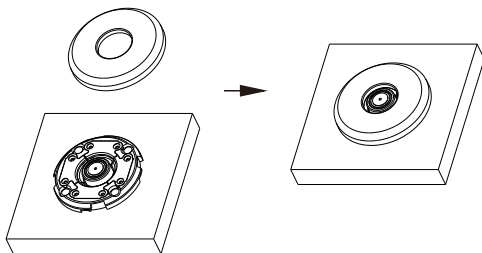
1 Drill hole



2 Install screws



3 Install cover



FCC Requirement

Any changes or modifications not expressly approved by the party responsible for compliance could void the user's authority to operate the equipment.

This device complies with Part 15 of the FCC Rules. Operation is subject to the following two conditions:

- (1) this device may not cause harmful interference, and
- (2) this device must accept any interference received, including interference that may cause undesired operation.

Note: This equipment has been tested and found to comply with the limits for a Class B digital device, pursuant to Part 15 of the FCC Rules. These limits are designed to provide reasonable protection against harmful interference in a residential installation. This equipment generates, uses, and can radiate radio frequency energy, and if not installed and used in accordance with the instructions, may cause harmful interference to radio communications. However, there is no guarantee that interference will not occur in a particular installation. If this equipment does cause harmful interference to radio or television reception, which can be determined by turning the equipment off and on, the user is encouraged to try to correct the interference by one or more of the following measures:

- Reorient or relocate the receiving antenna.
- Increase the separation between the equipment and receiver.
- Connect the equipment into an outlet on a circuit different from that to which the receiver is connected.
- Consult the dealer or an experienced radio/TV technician for help.