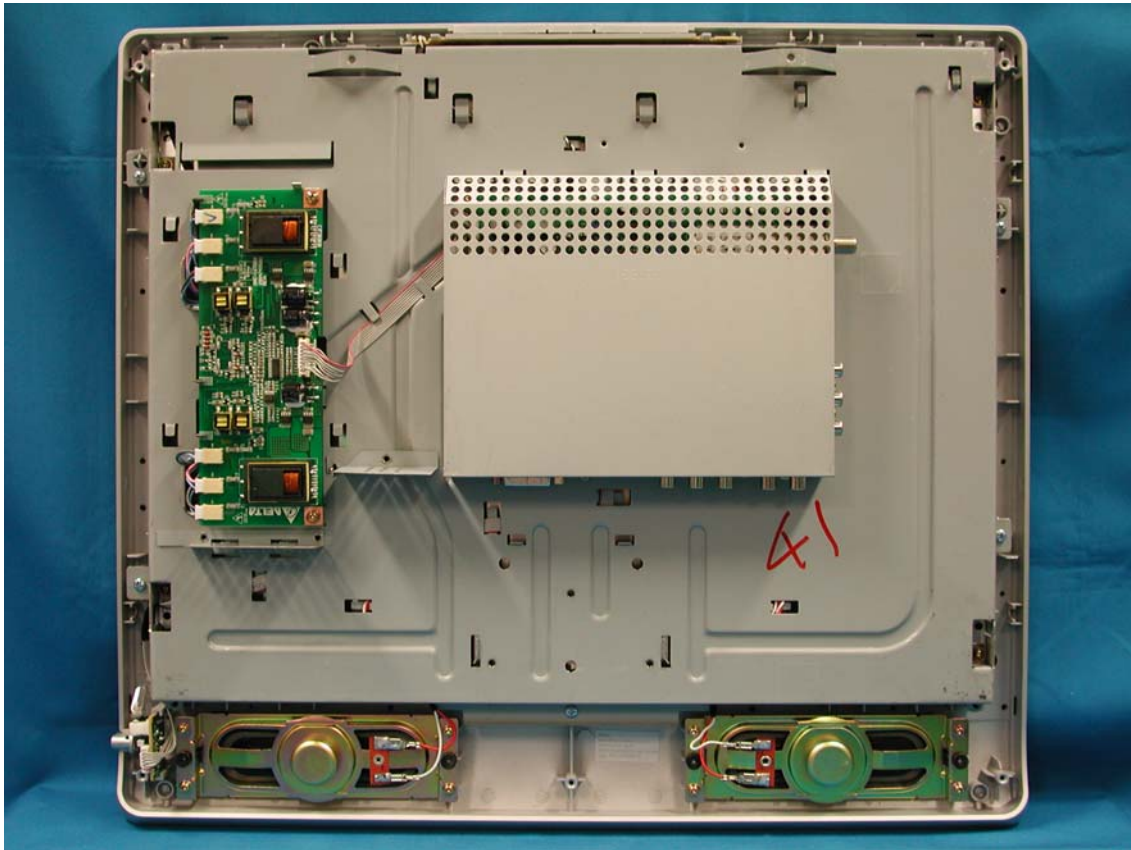
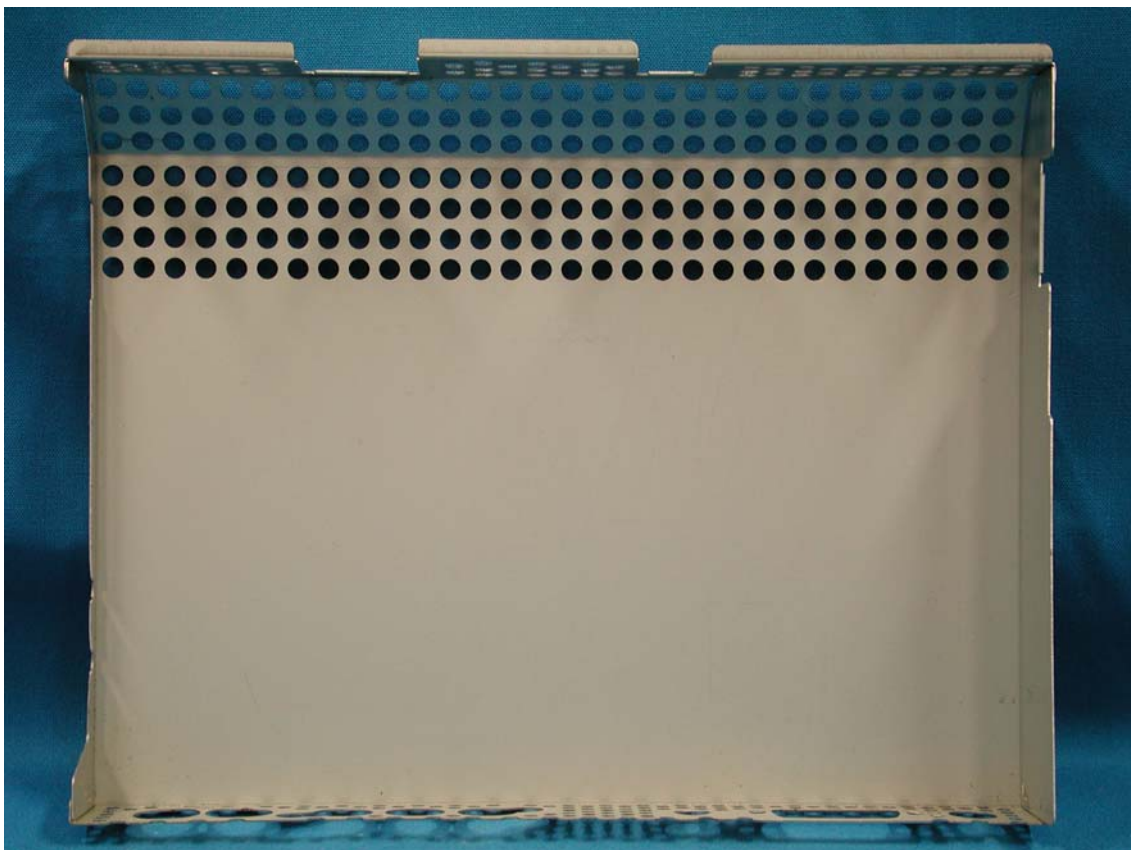


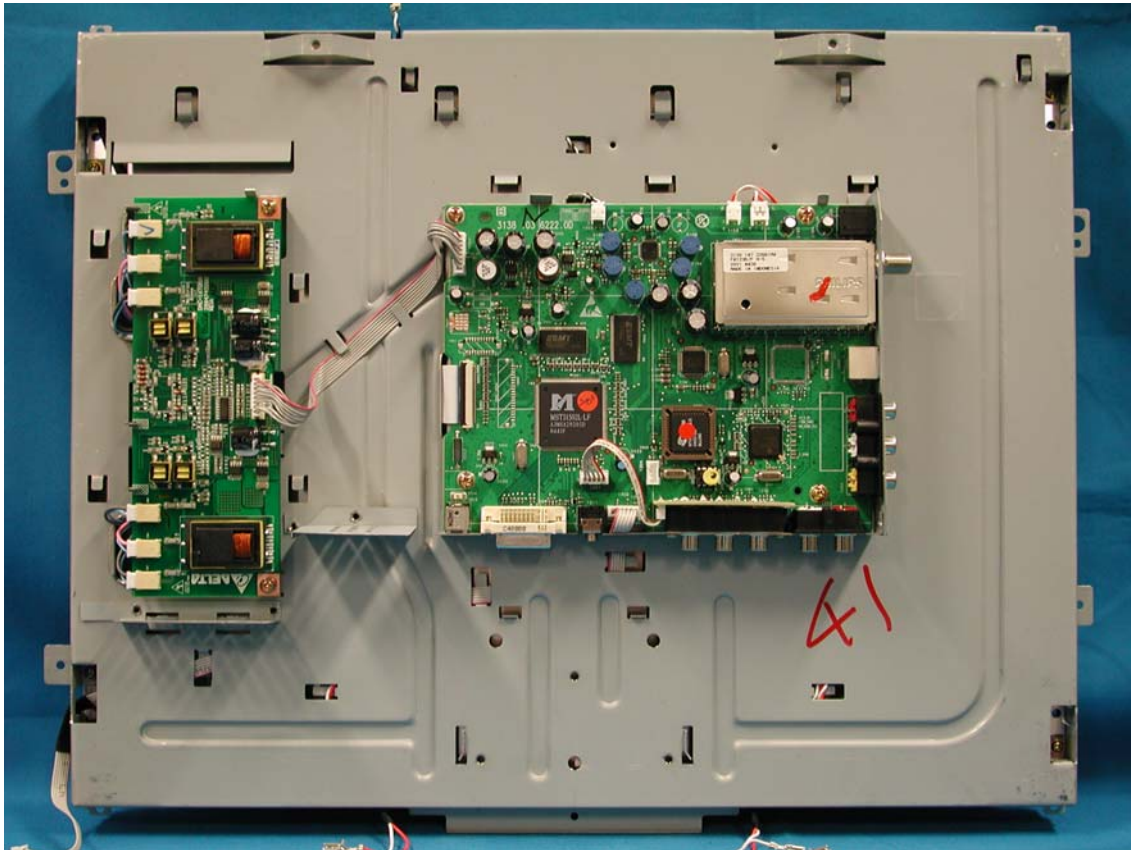
Rear View w/o Back Cover



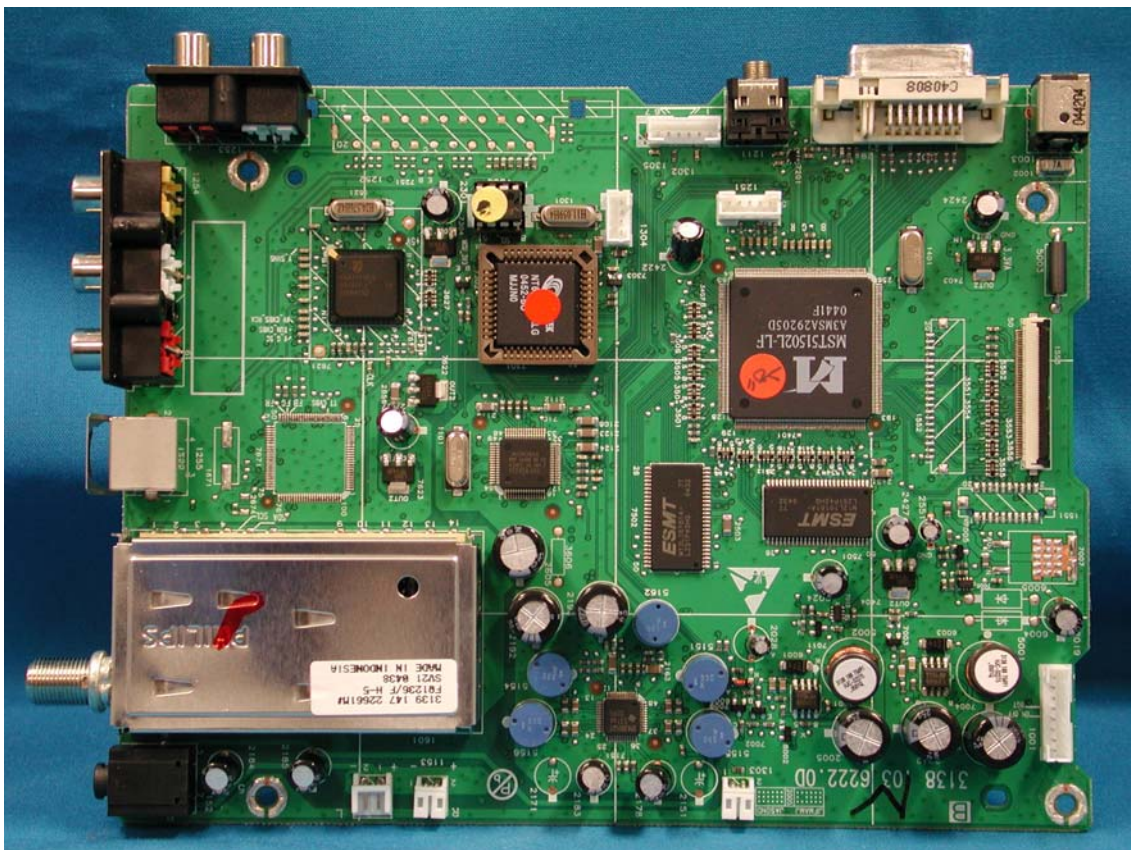
Shielding Cover



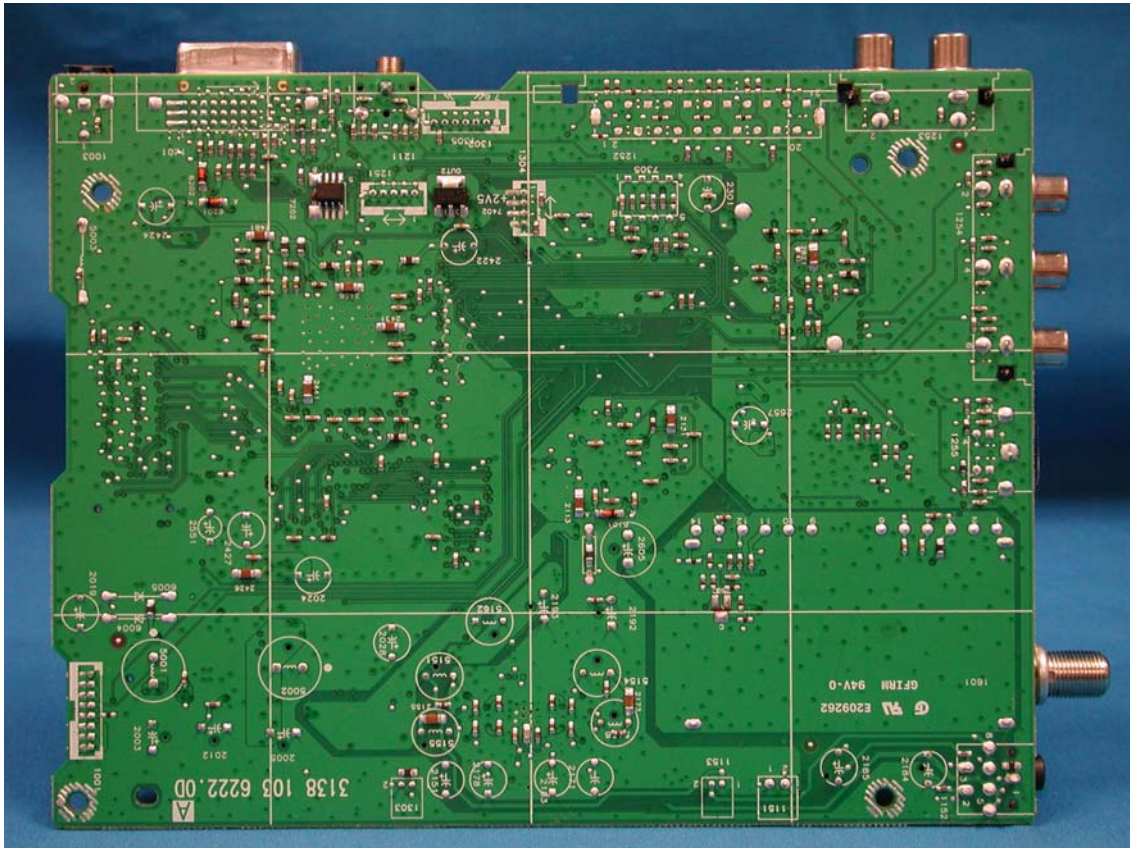
Assembly w/o Shielding Cover



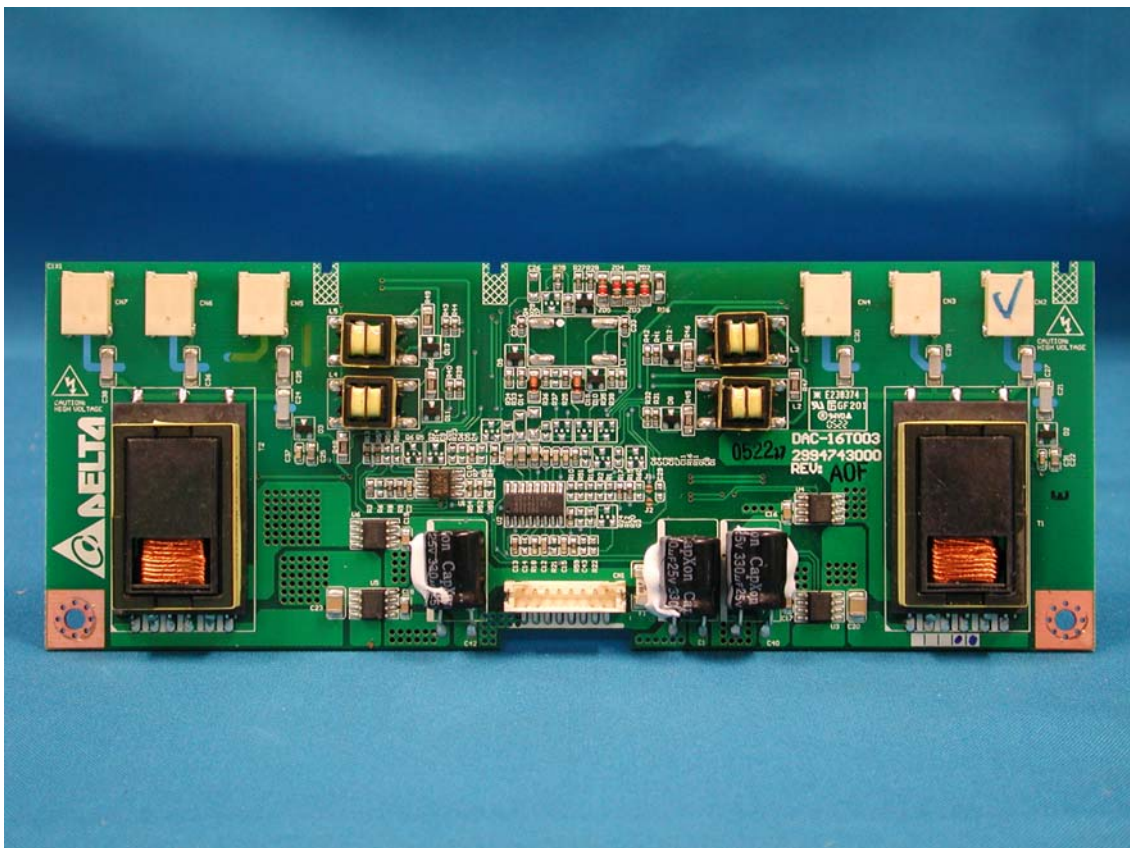
PCB Layout



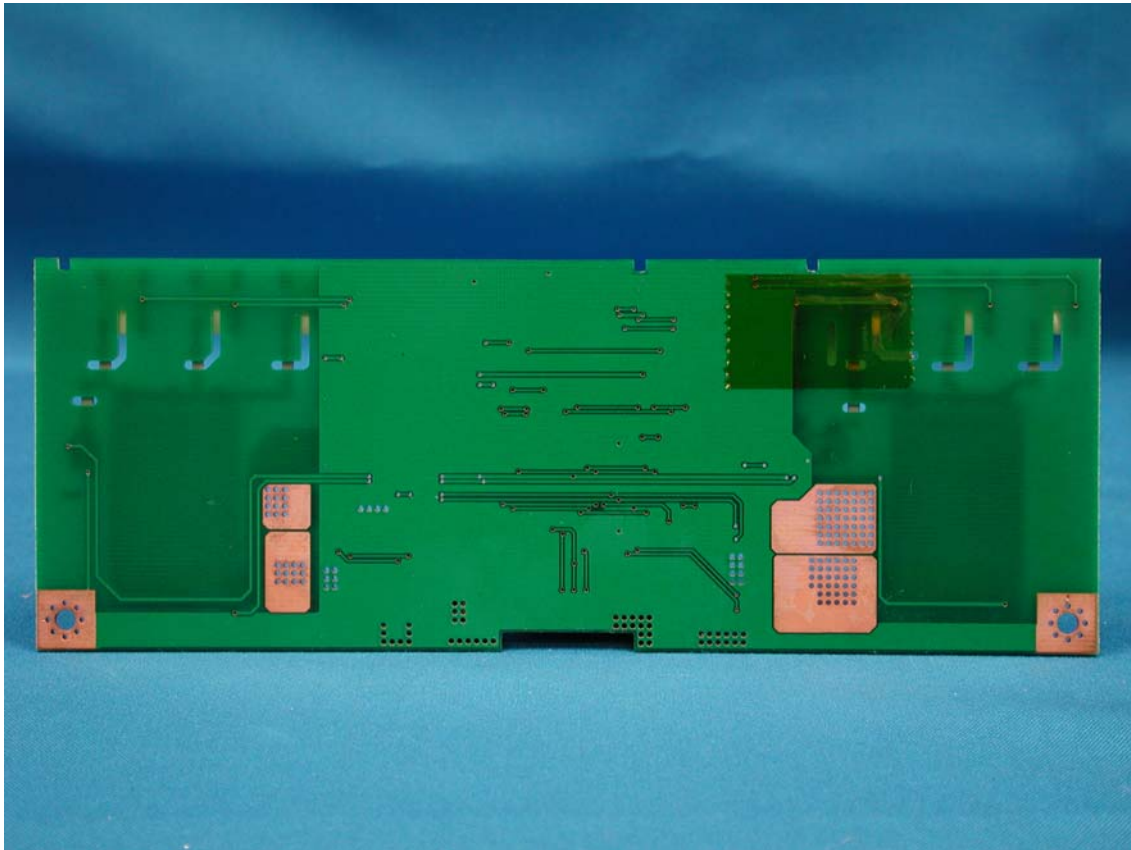
PCB Layout



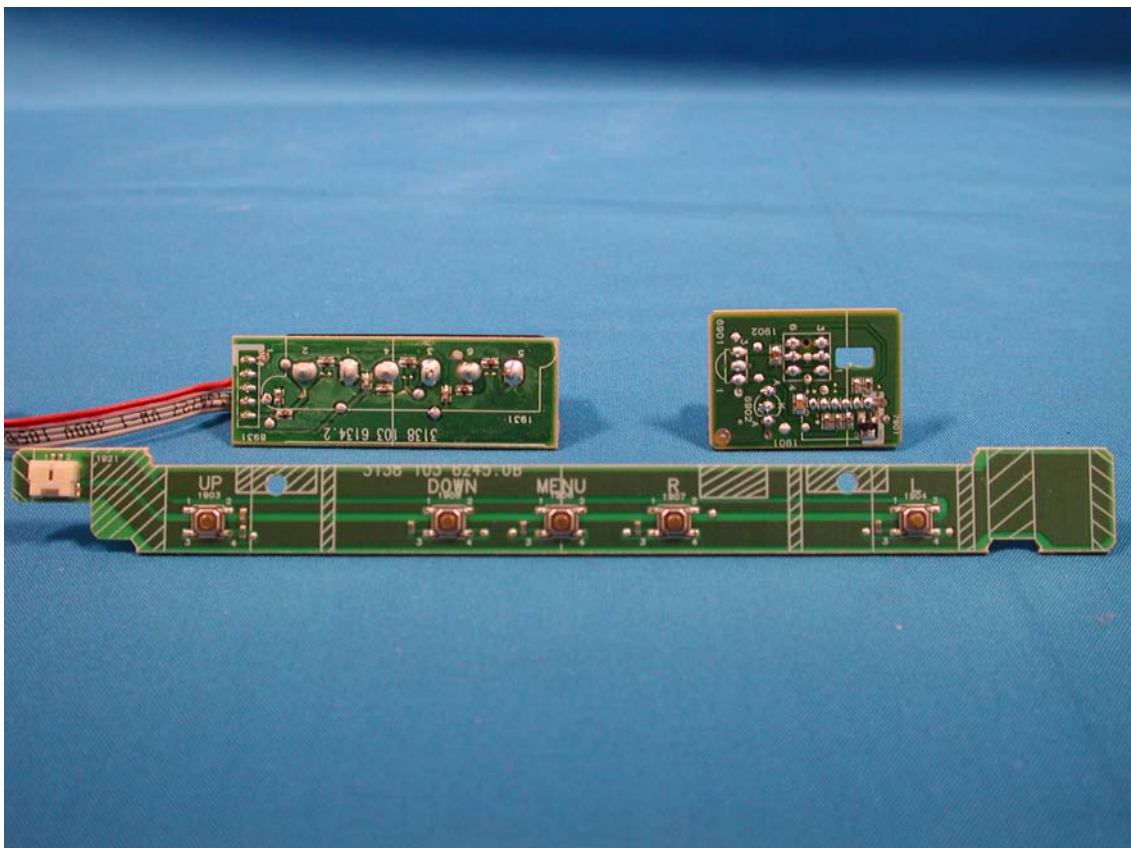
PCB Layout



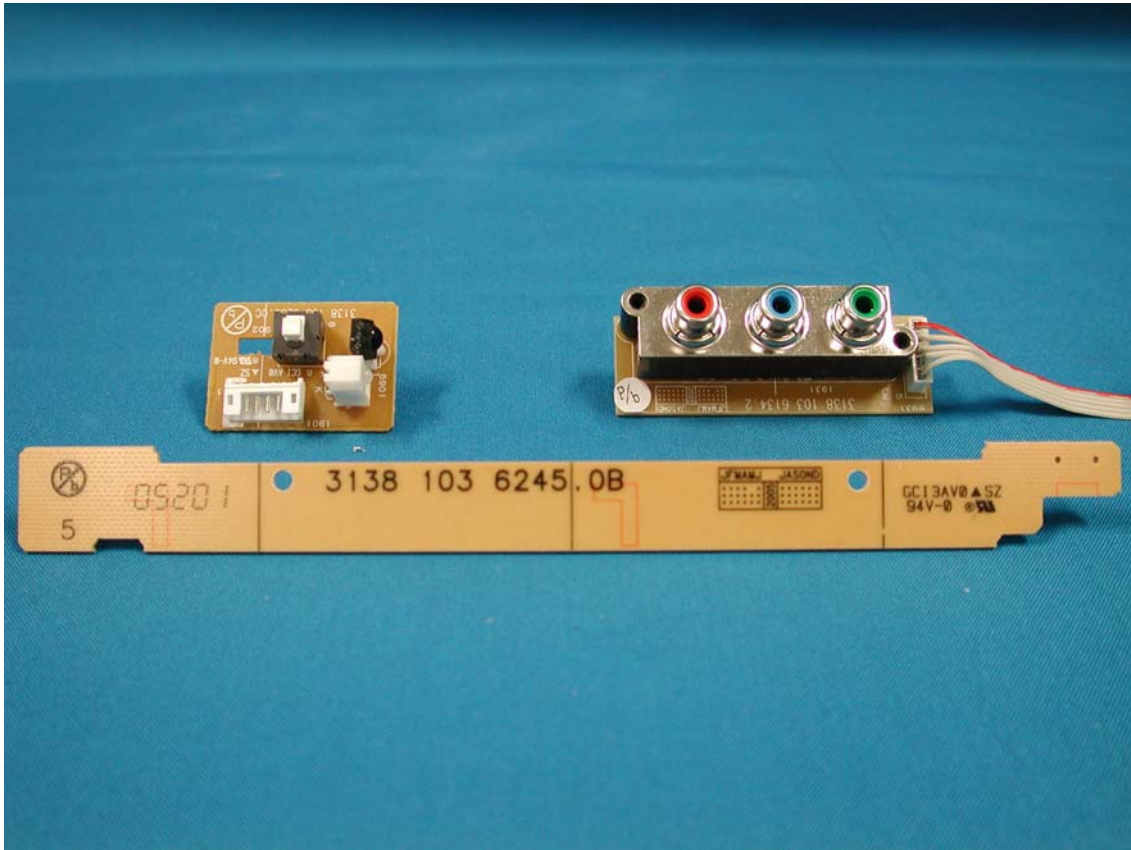
PCB Layout



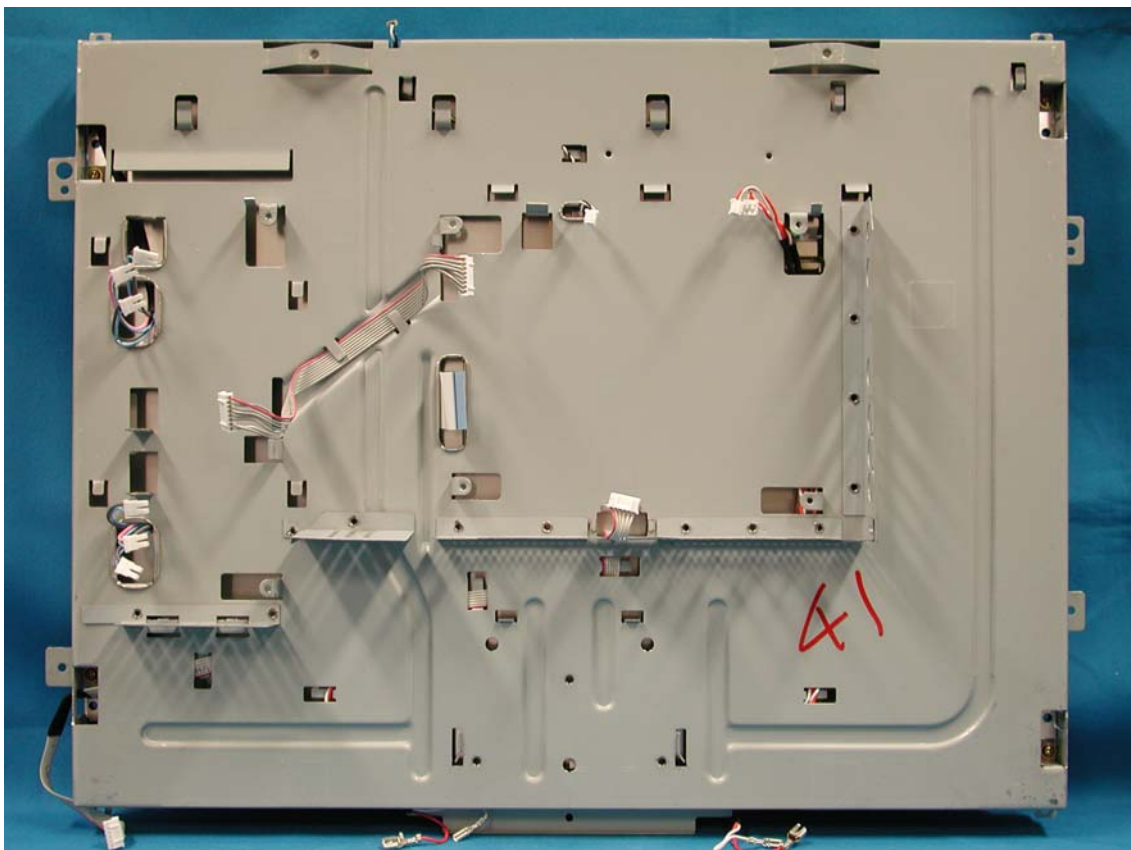
PCB Layout



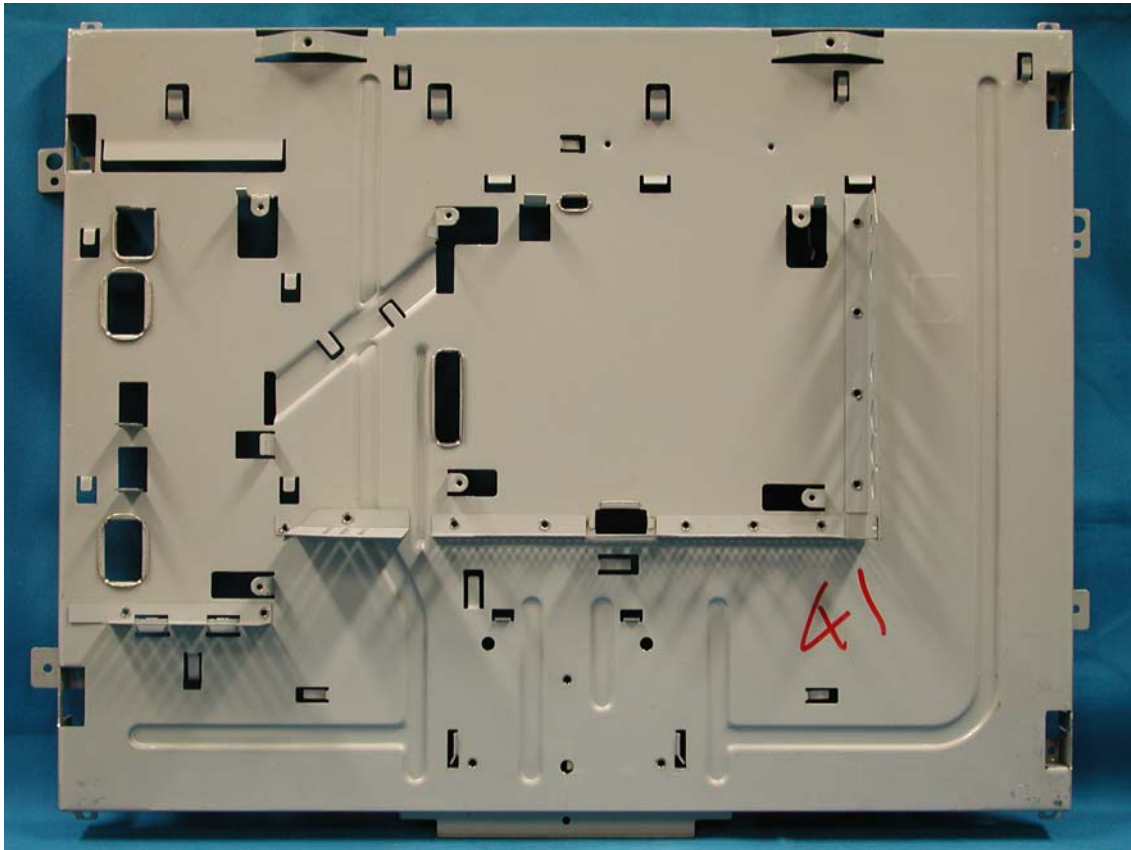
PCB Layout



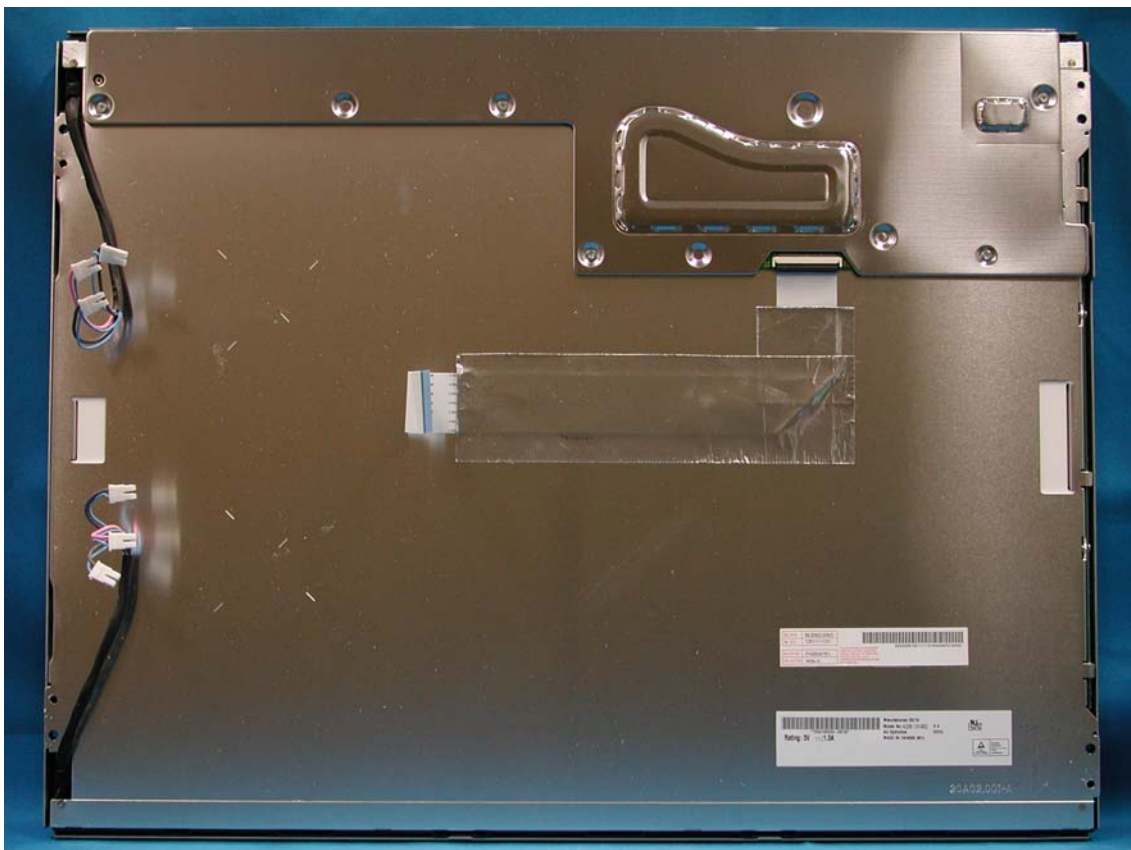
Assembly w/o PCB



Plate



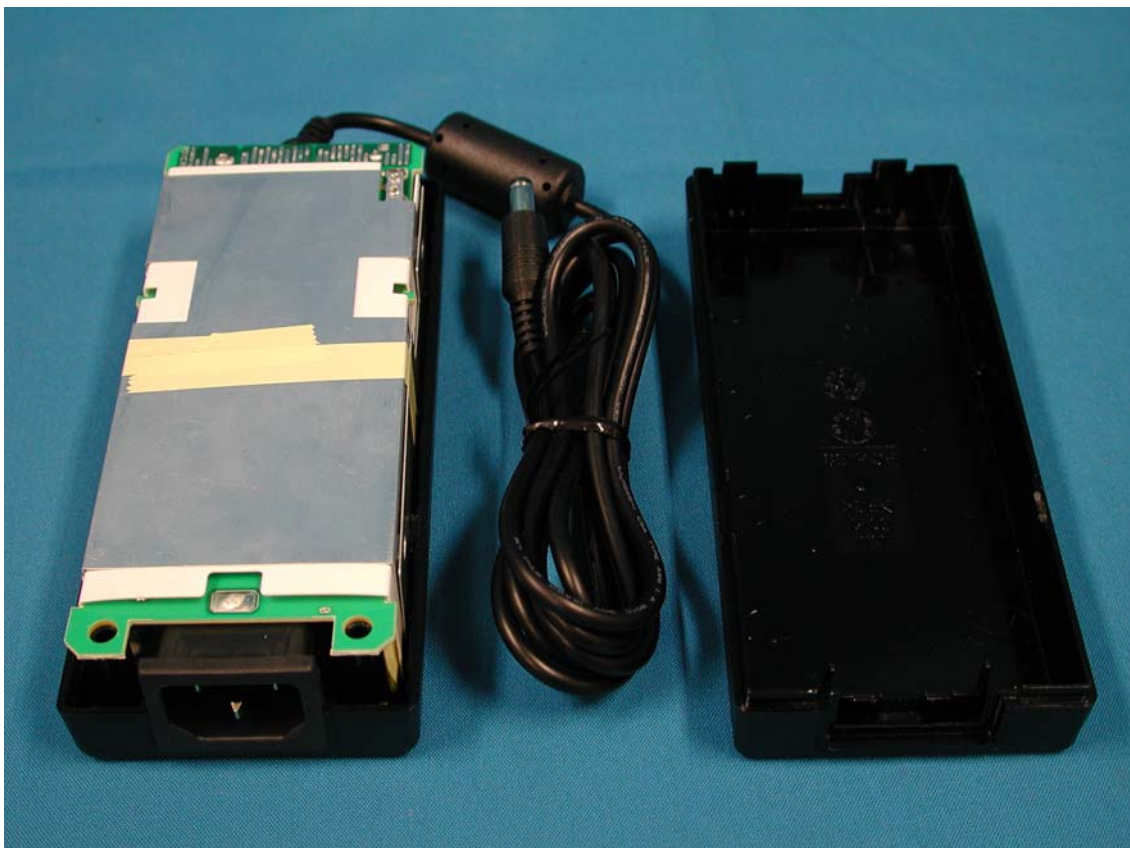
LCD Panel



AC Adapter



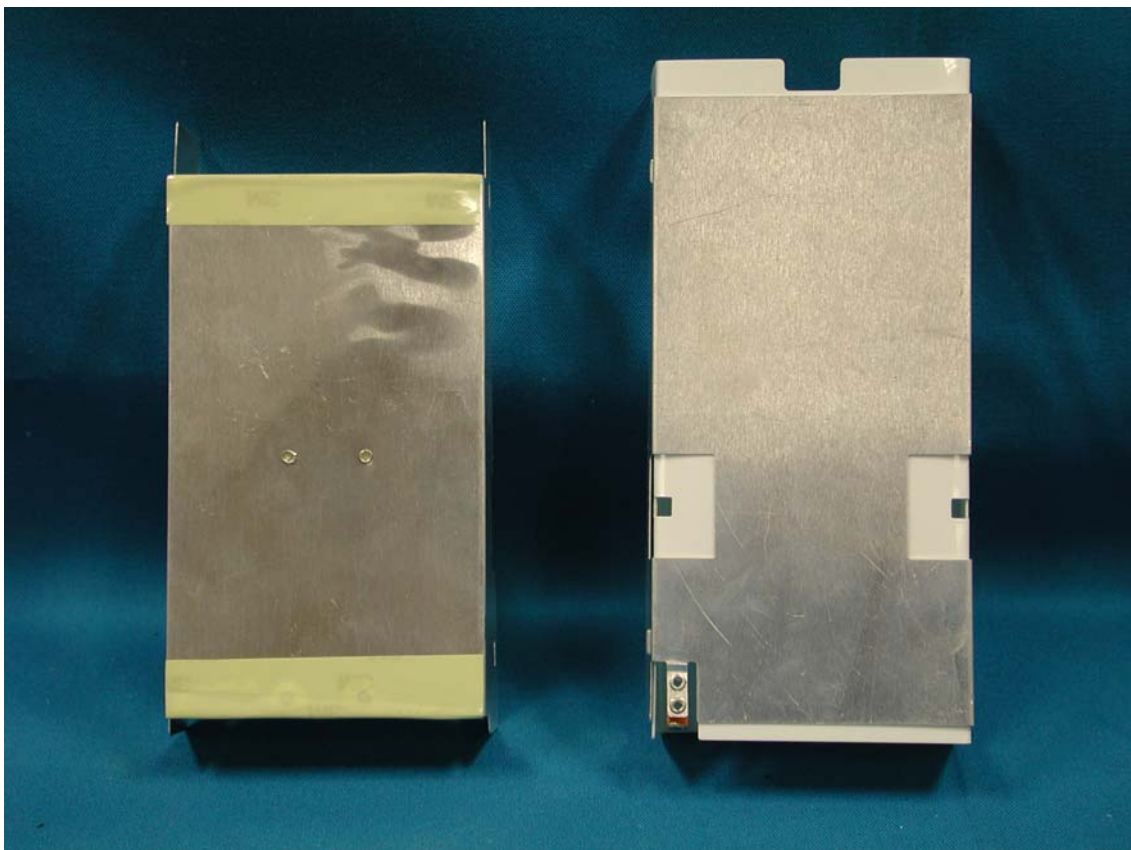
Assembly with Shielding



Assembly with Shielding



Shielding



A photograph of the internal components of a power supply unit, showing a transformer, capacitors, and other electronic components mounted on a yellow PCB. The transformer is a large, cylindrical component with a white label. It is surrounded by various capacitors, including electrolytic capacitors and smaller surface-mount capacitors. There are also resistors and other electronic components visible. The PCB is yellow and has various components labeled with text like 'T3.15A H200', 'CY1', 'R52', 'LED51', 'C52', 'L51', 'R51', 'HS2', 'IC2', 'R60', 'LEADP-60FF B', and 'P60'. The unit is mounted on a blue surface.

Power Cord and I/F Cables

