

Figure 5
Remove Front Cover of LCD, Internal View



Figure 6
OSD Function Key Control Board (Component Side)



Figure 7
OSD Function Key Control Board (Solder Side)

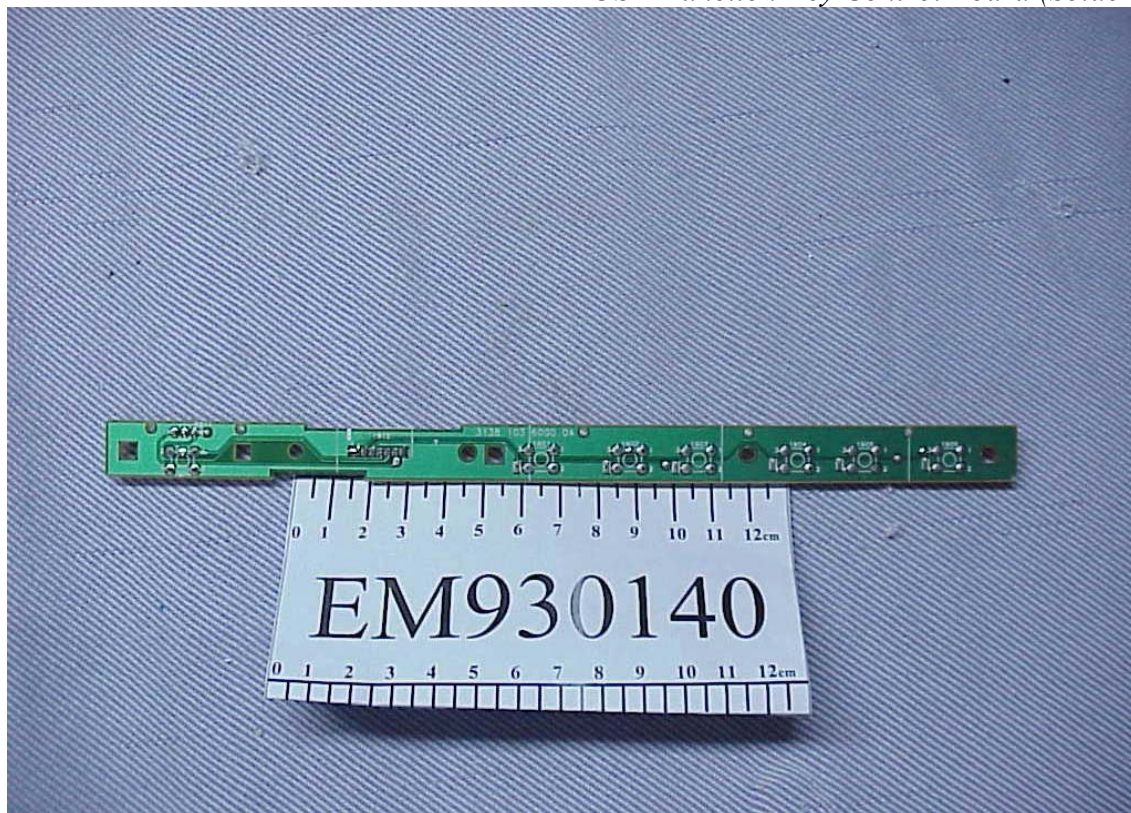


Figure 8
Remove Back Cover of LCD, Internal View



Figure 9
Frame of Internal (Back View)



Figure 10
Remove Metal cover of PCB, Internal View



Figure 11
Frame of PCB, Internal View

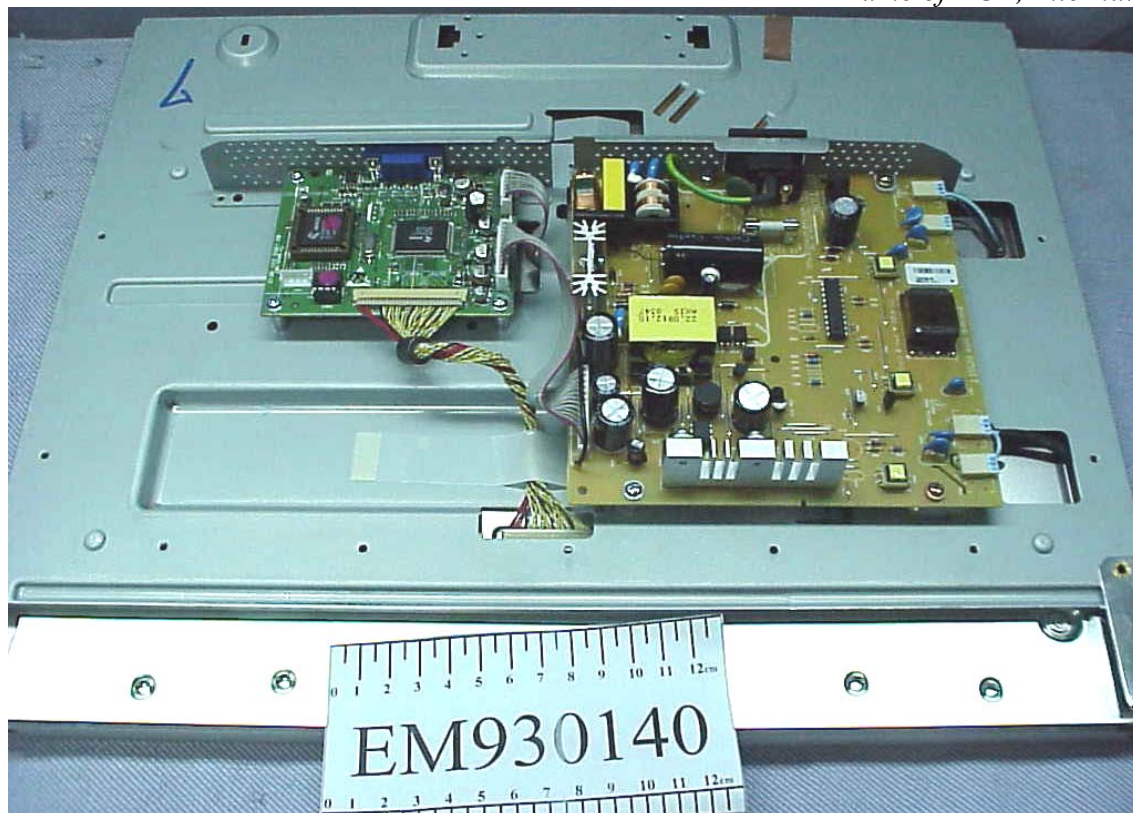


Figure 12
Main Board (Component Side)

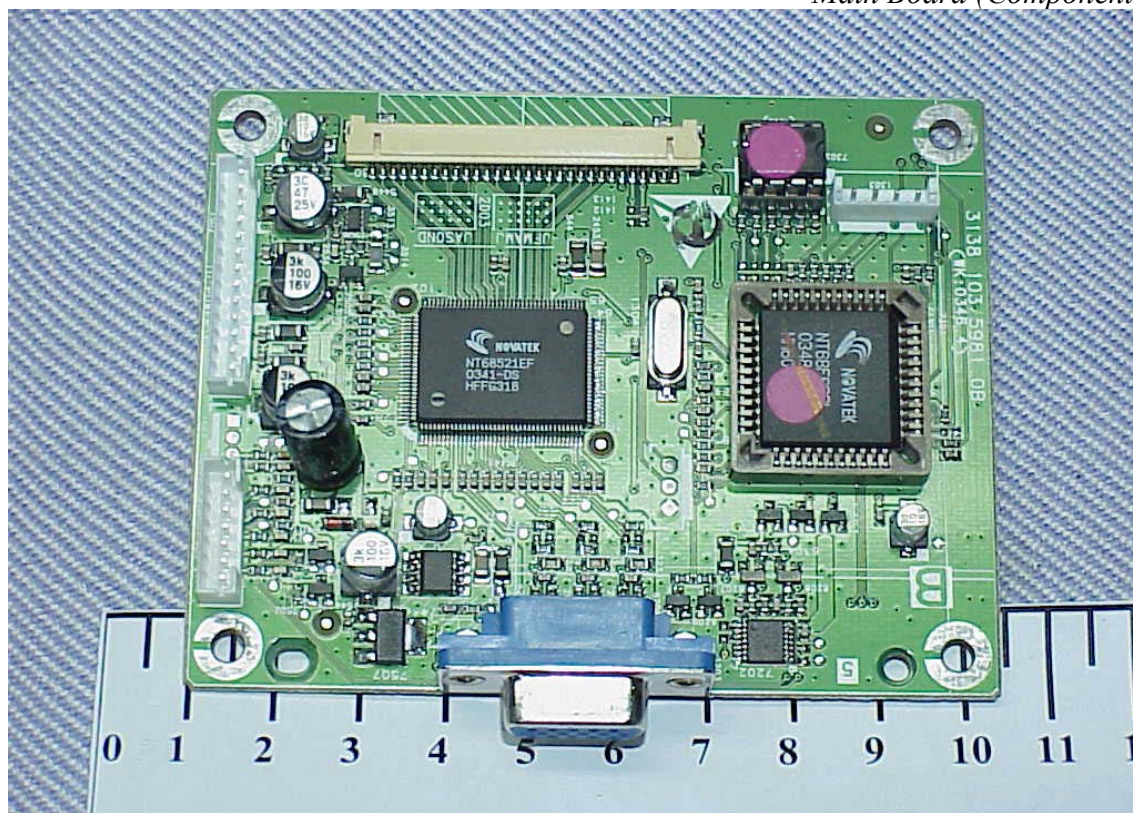


Figure 13
Main Board (Solder Side)

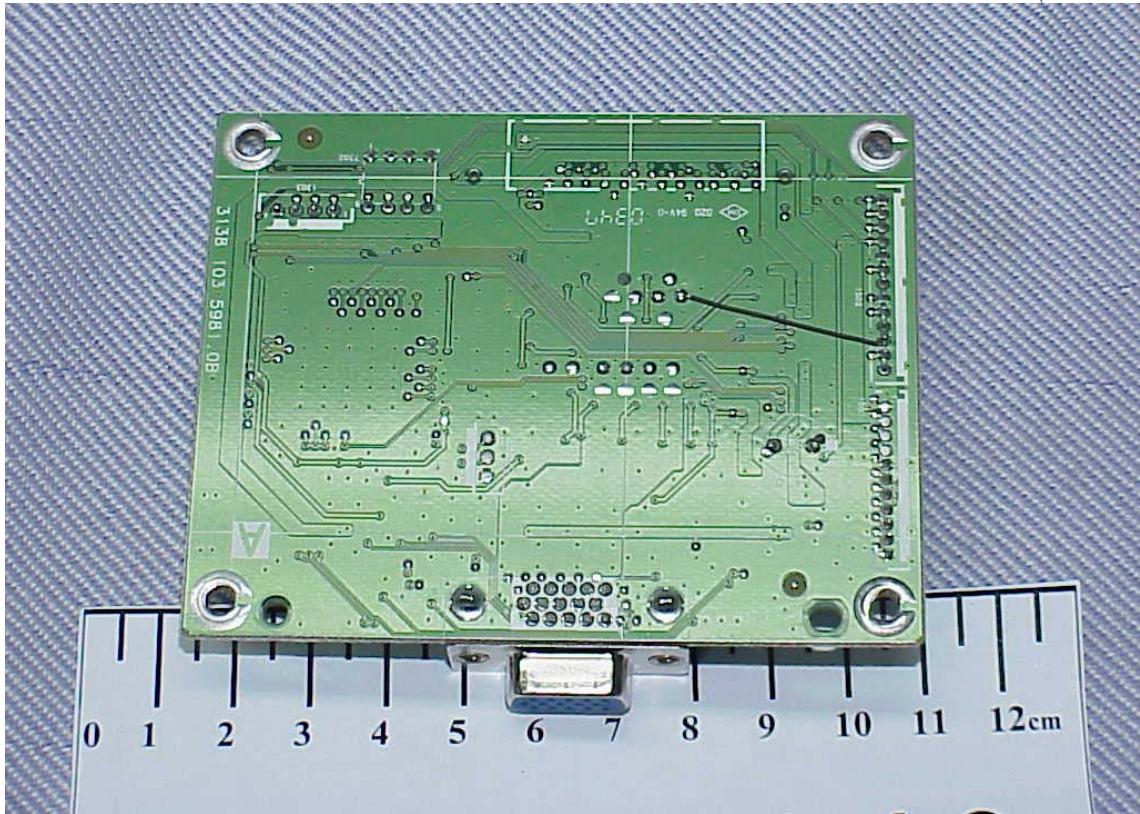


Figure 14
Power Board (Component Side)

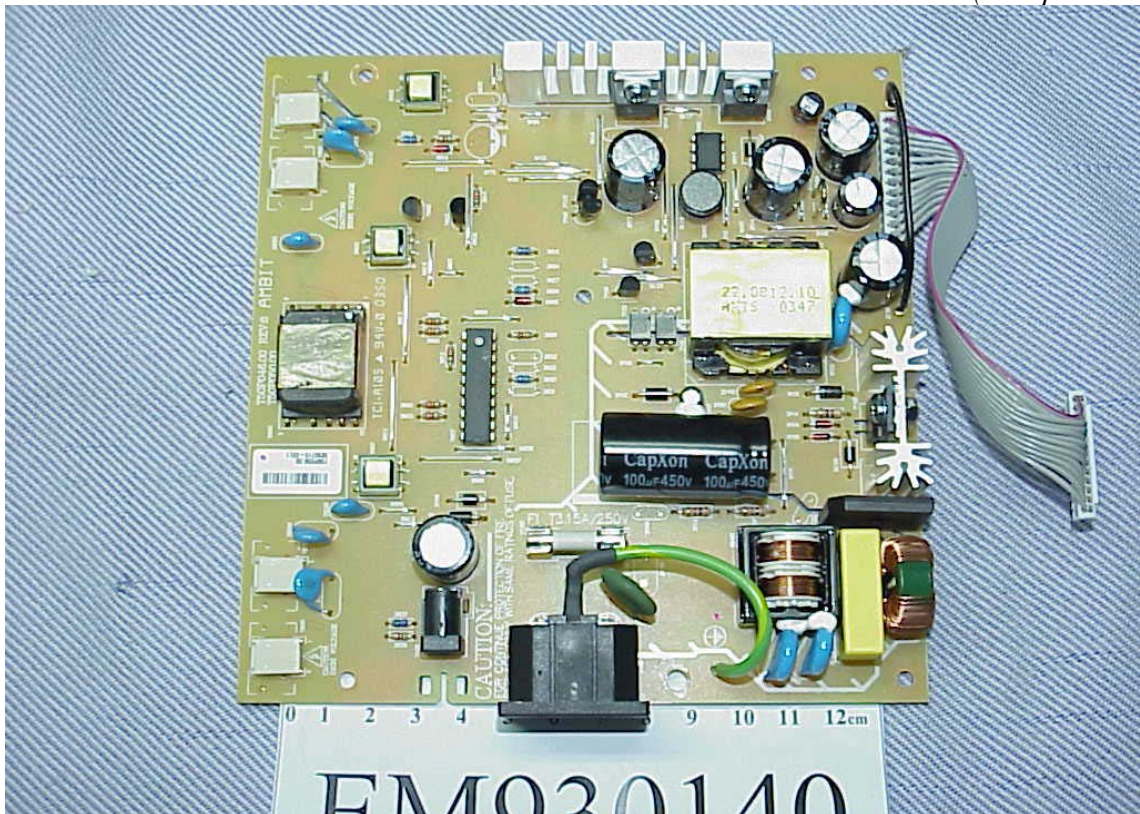


Figure 15
Power Board (Solder Side)

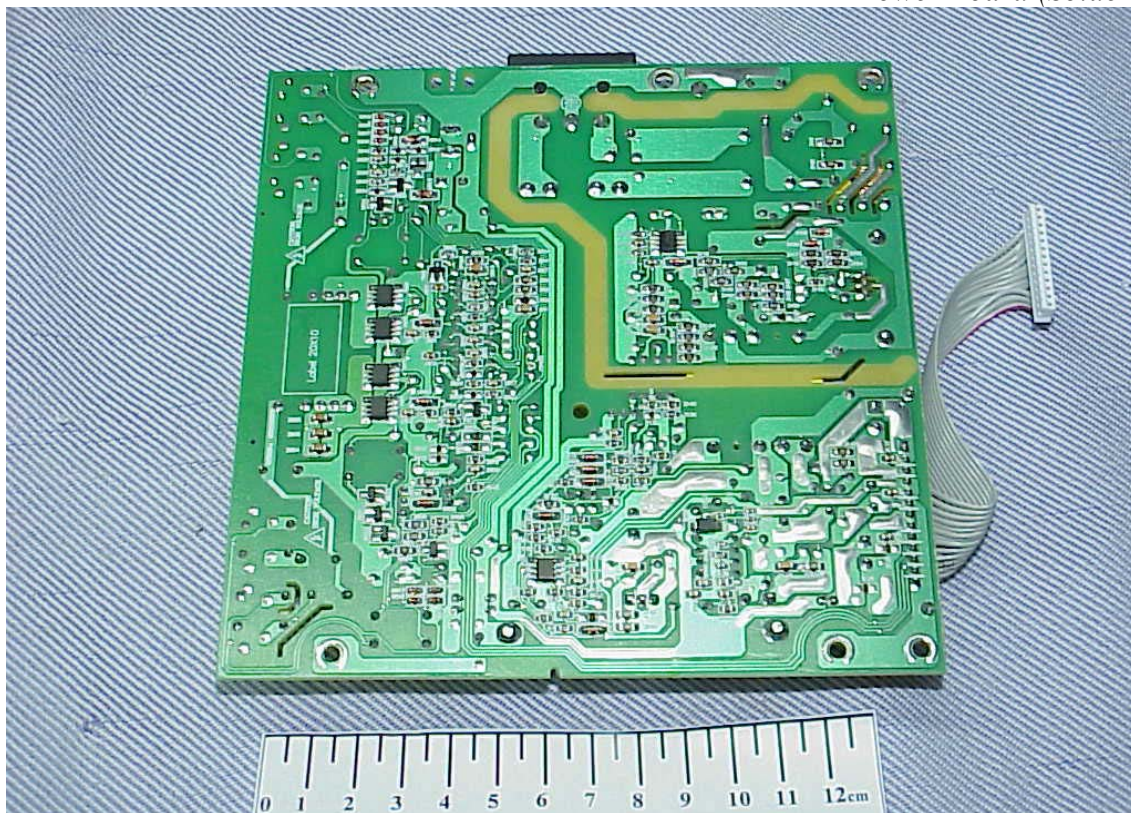


Figure 16
Removed Metal Cover of LCD Panel, Internal View



Figure 17
Label of LCD Panel



Figure 18
Remove Cover of LVDS of LCD Panel, Internal View

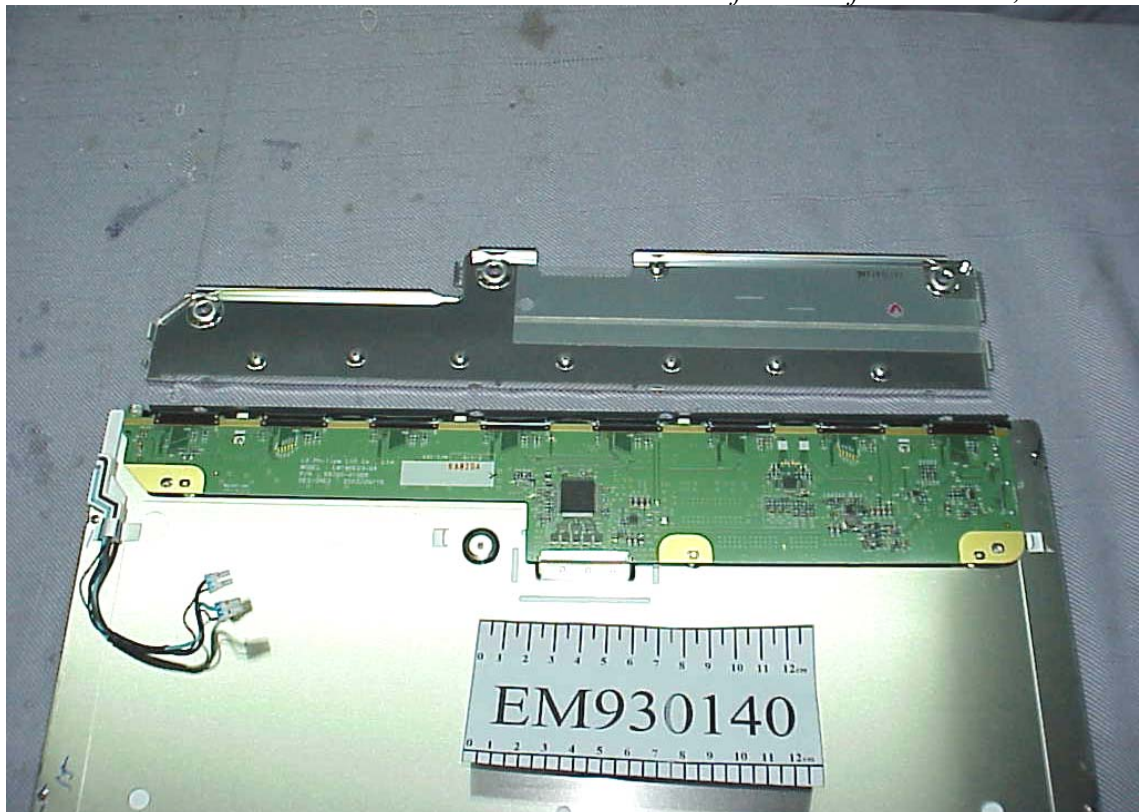


Figure 19
LVDS Board of LCD Panel (Component Side)

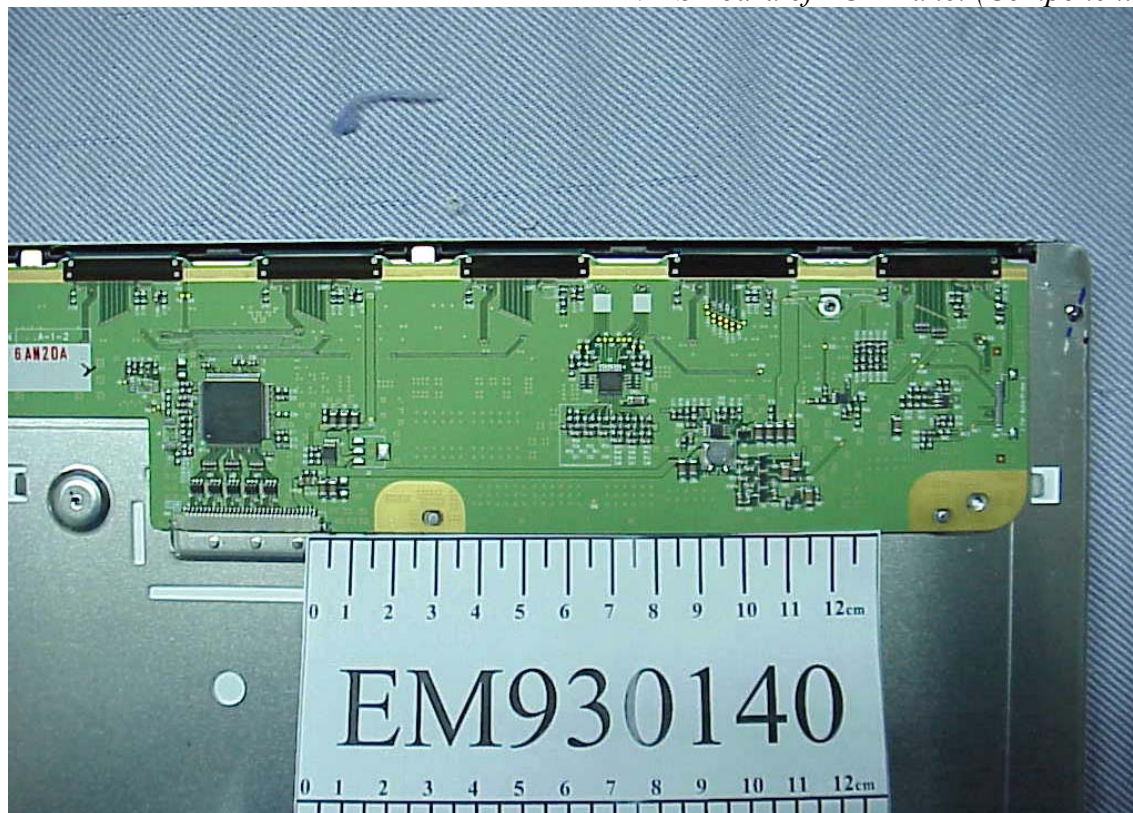


Figure 20
LVDS Board of LCD Panel (Component Side)

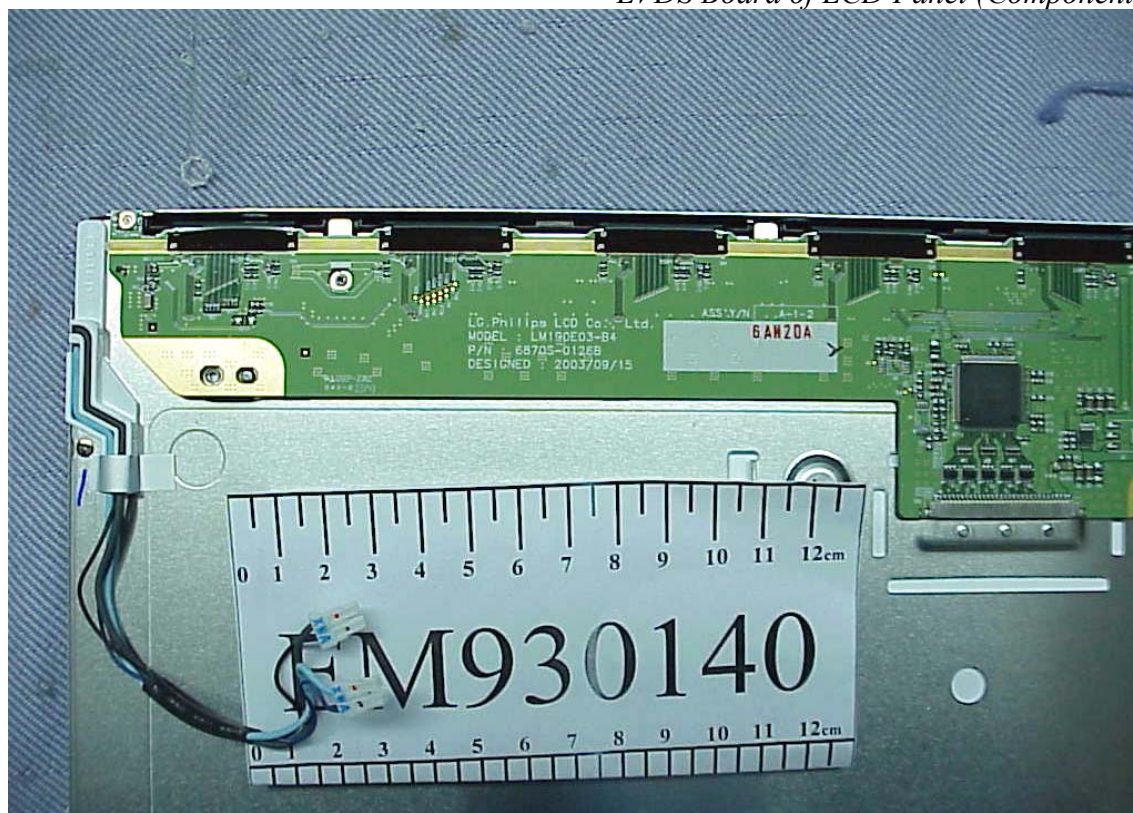


Figure 21
LVDS Board of LCD Panel (Solder Side)

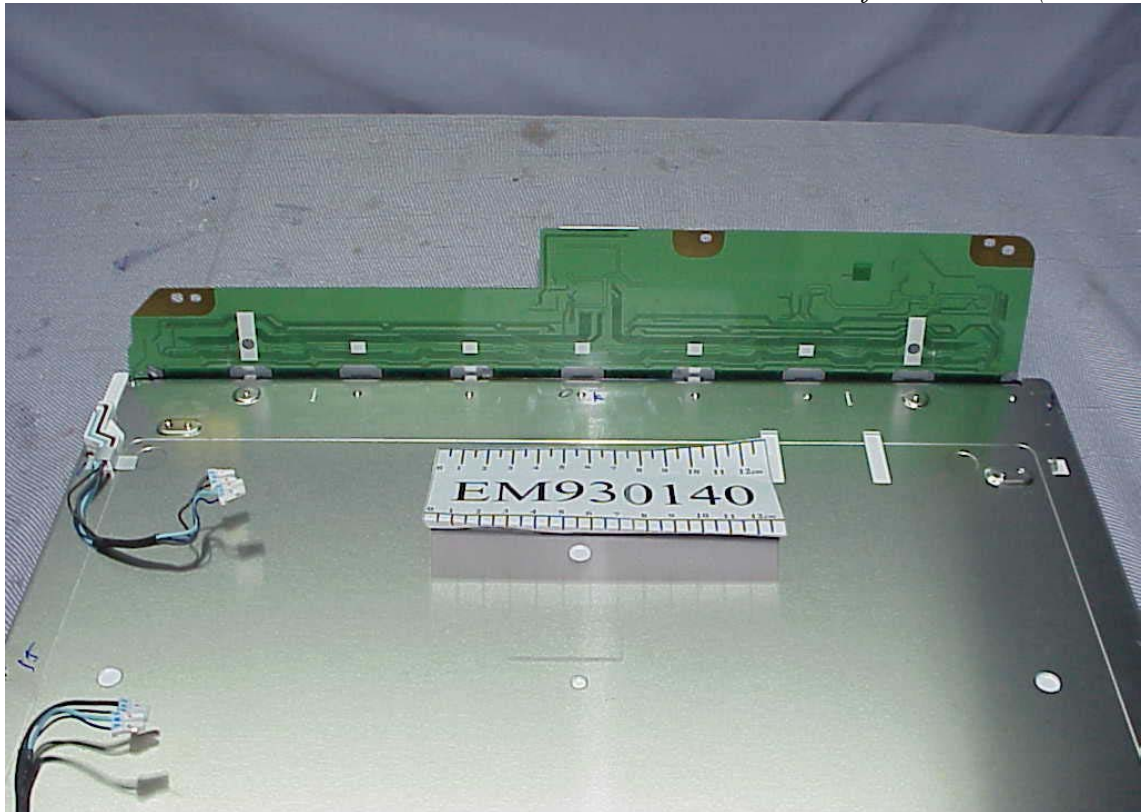


Figure 22
D-Sub Signal Cable

