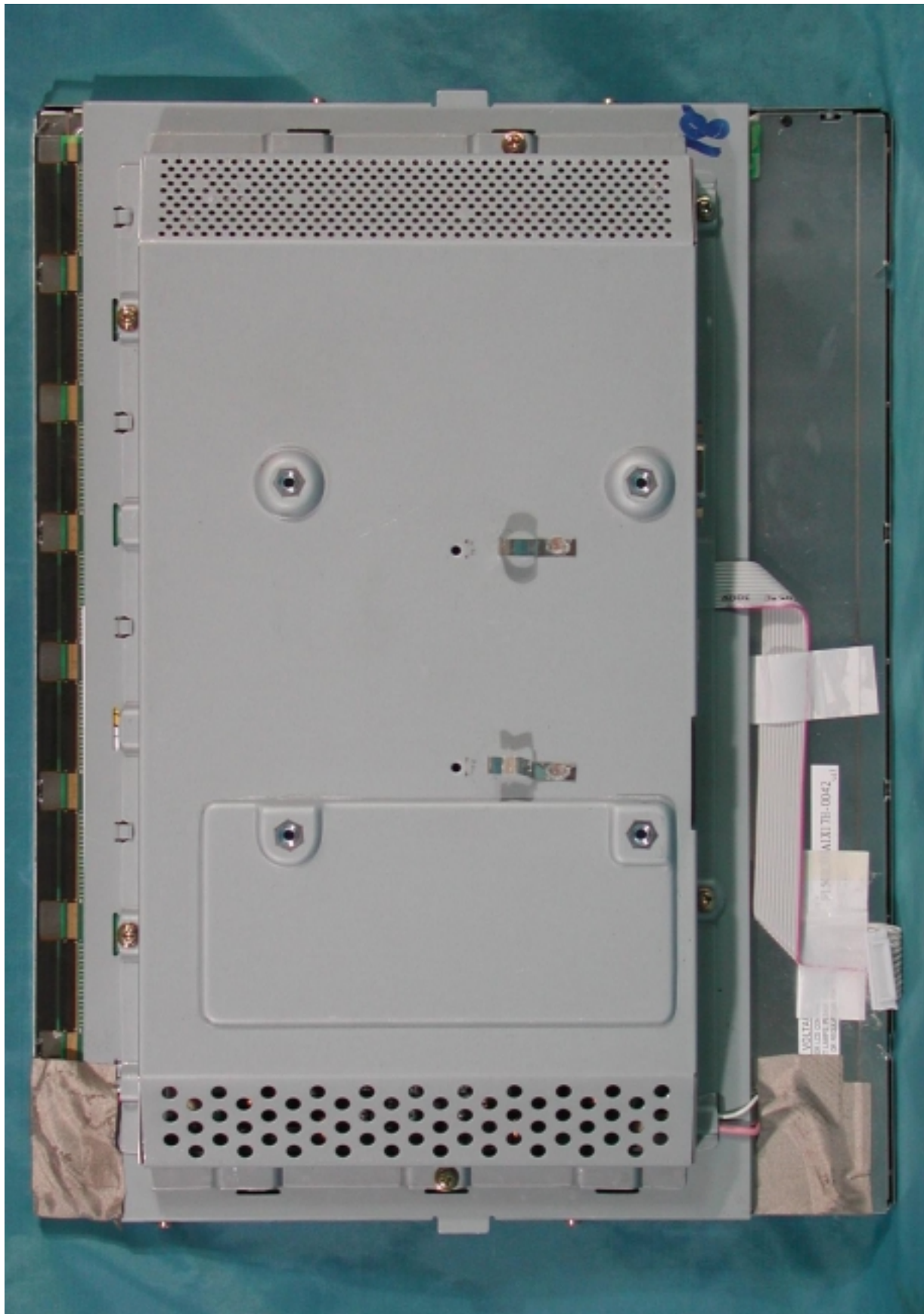


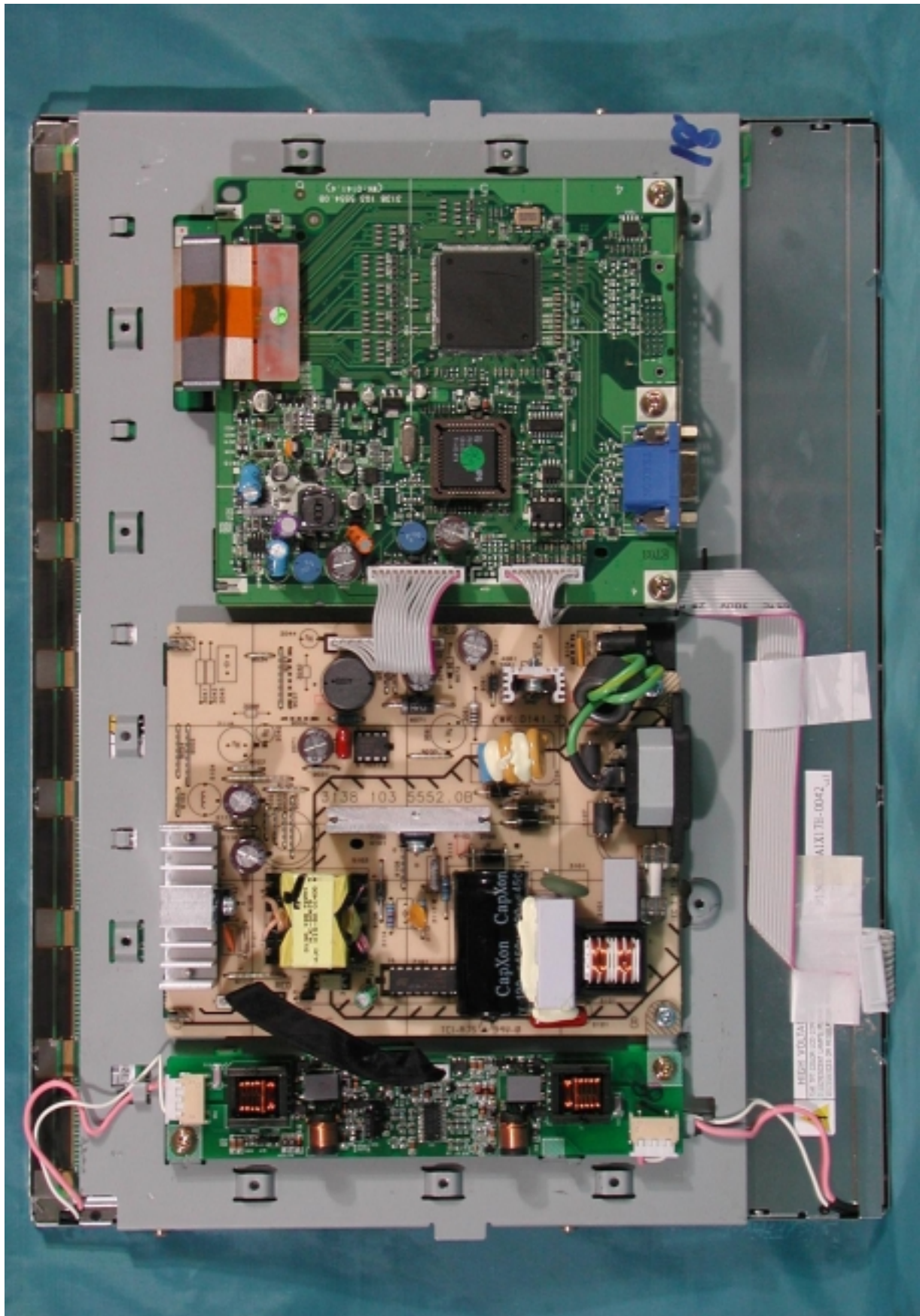
Assembly w/o Back Cover



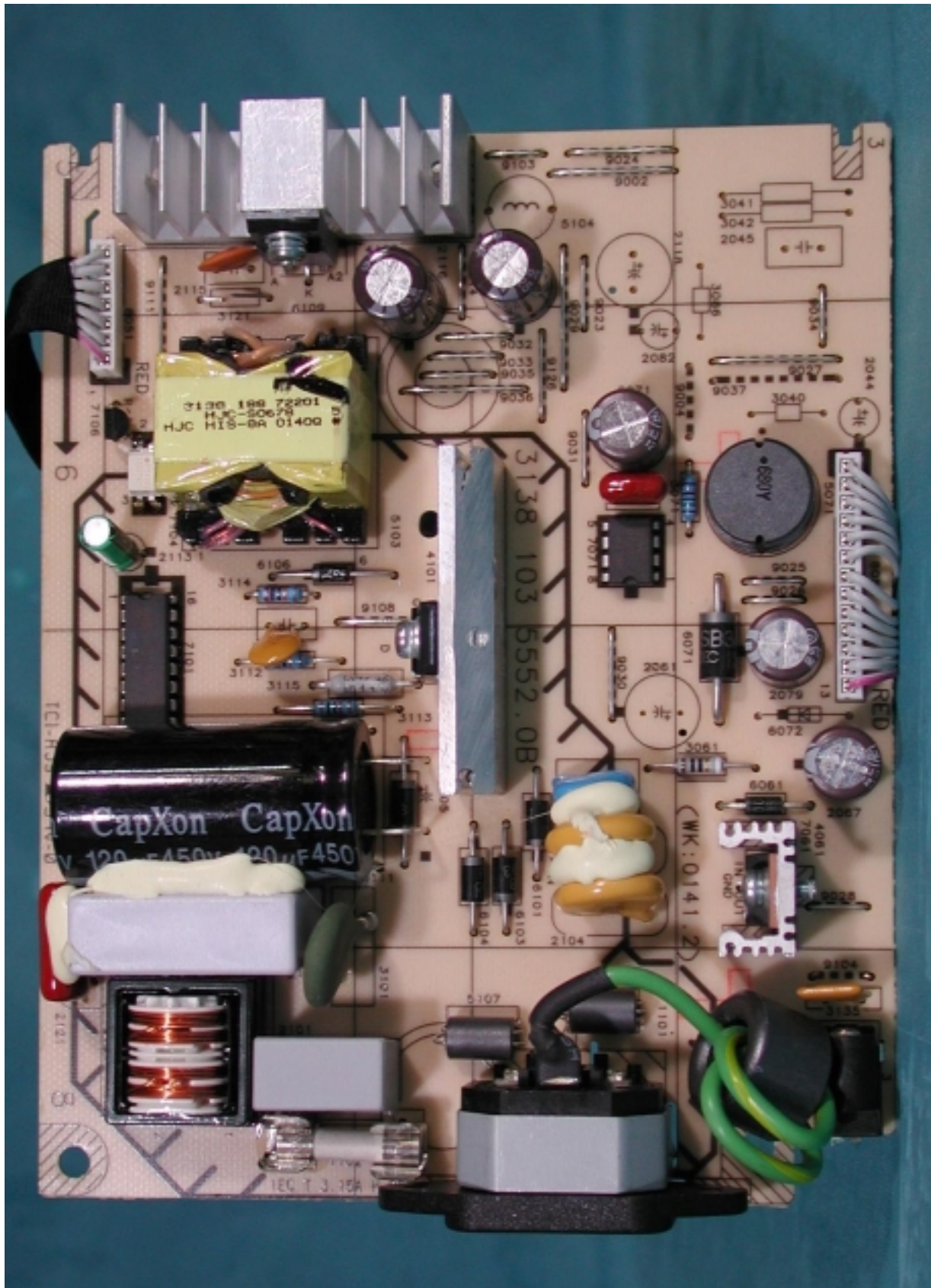
Shielding



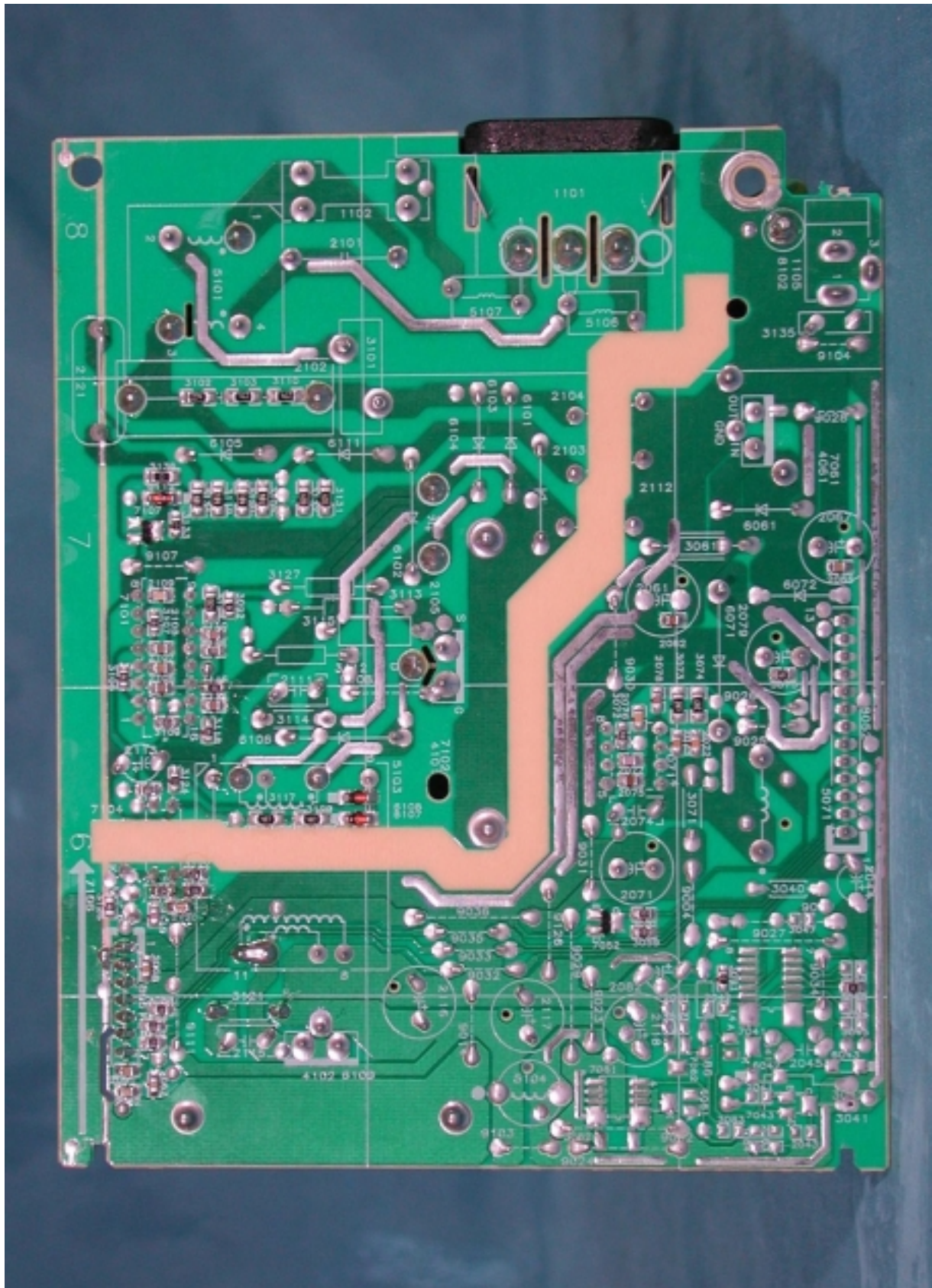
Assembly w/o Shielding



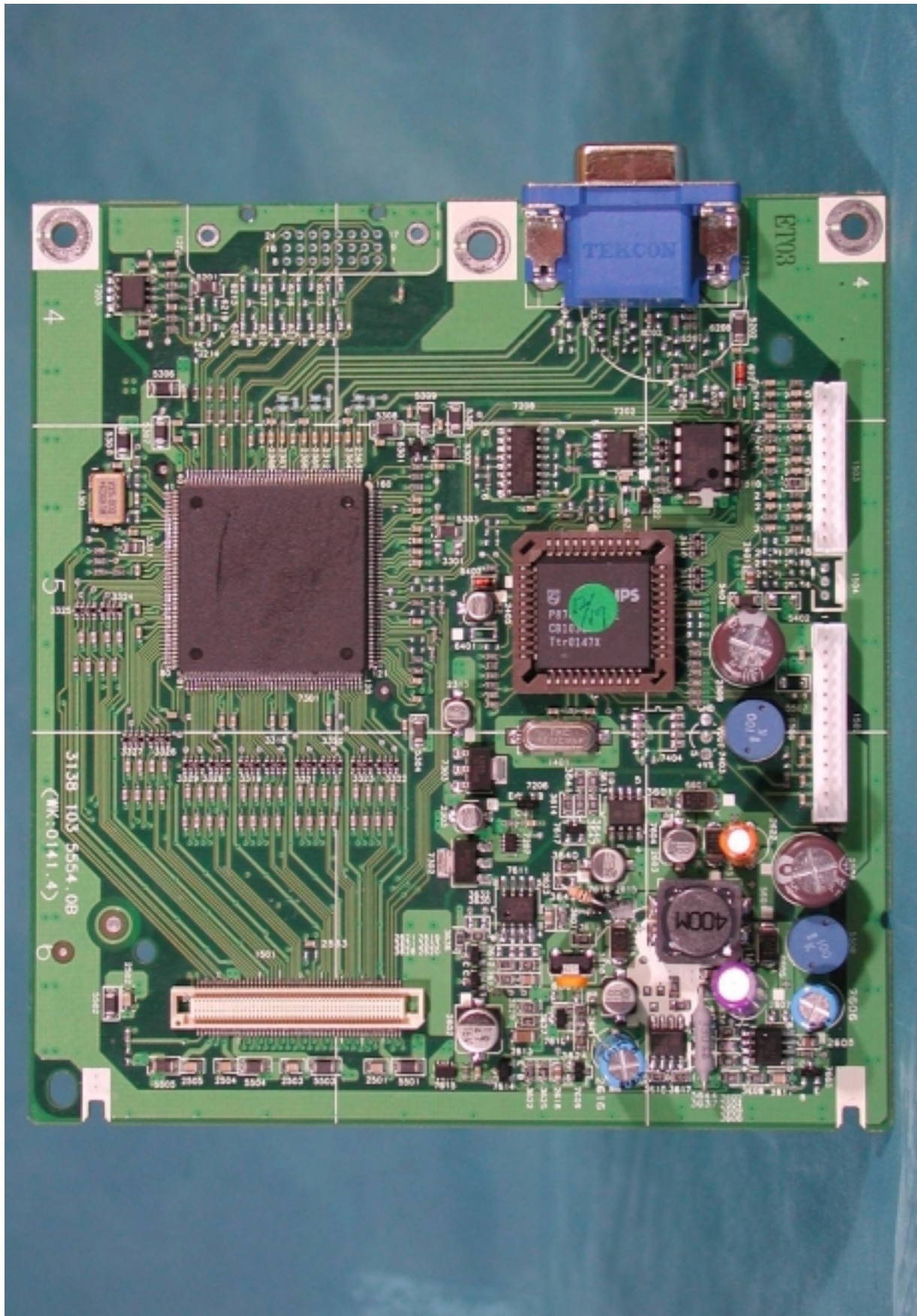
PCB Layout



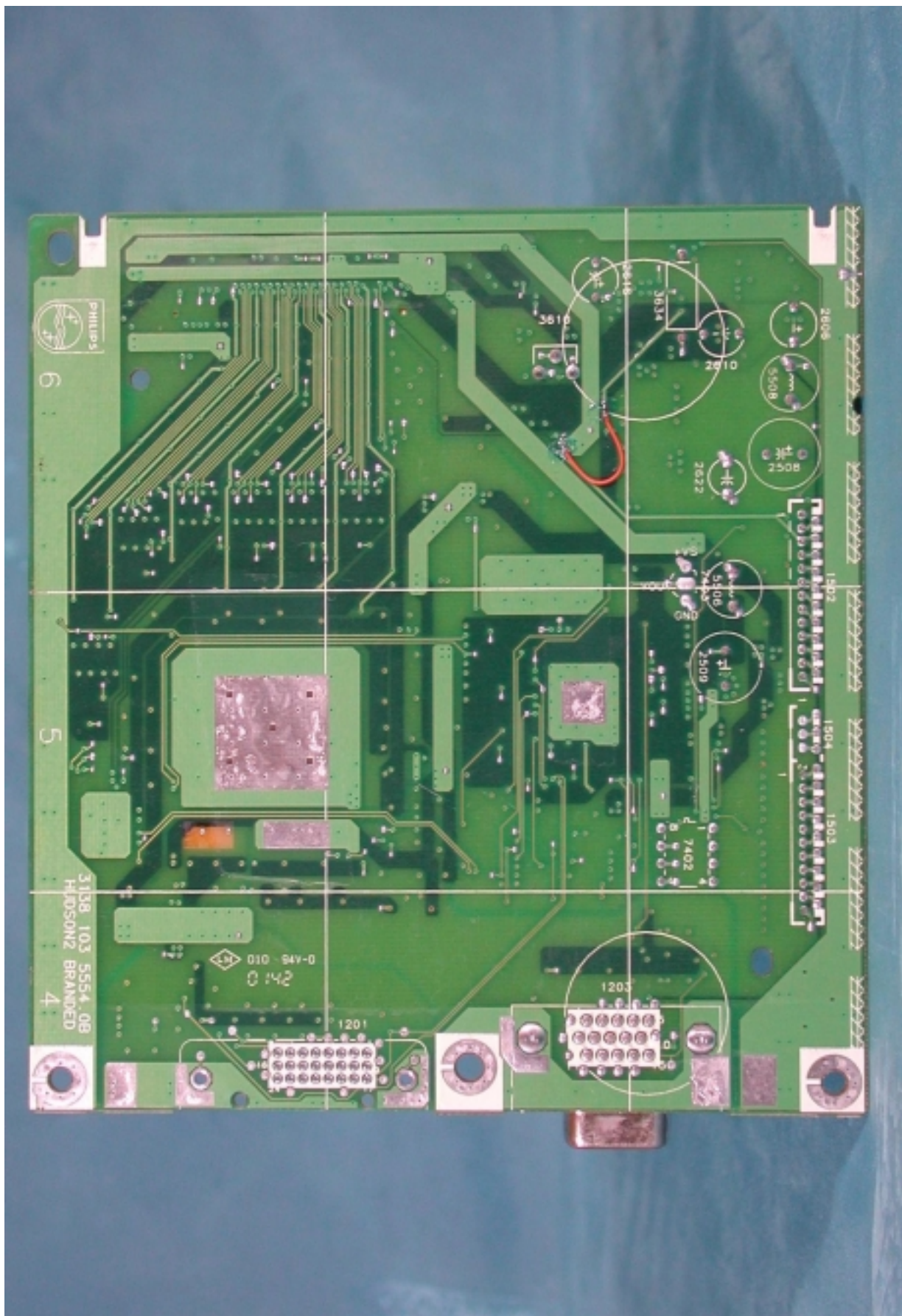
PCB Layout



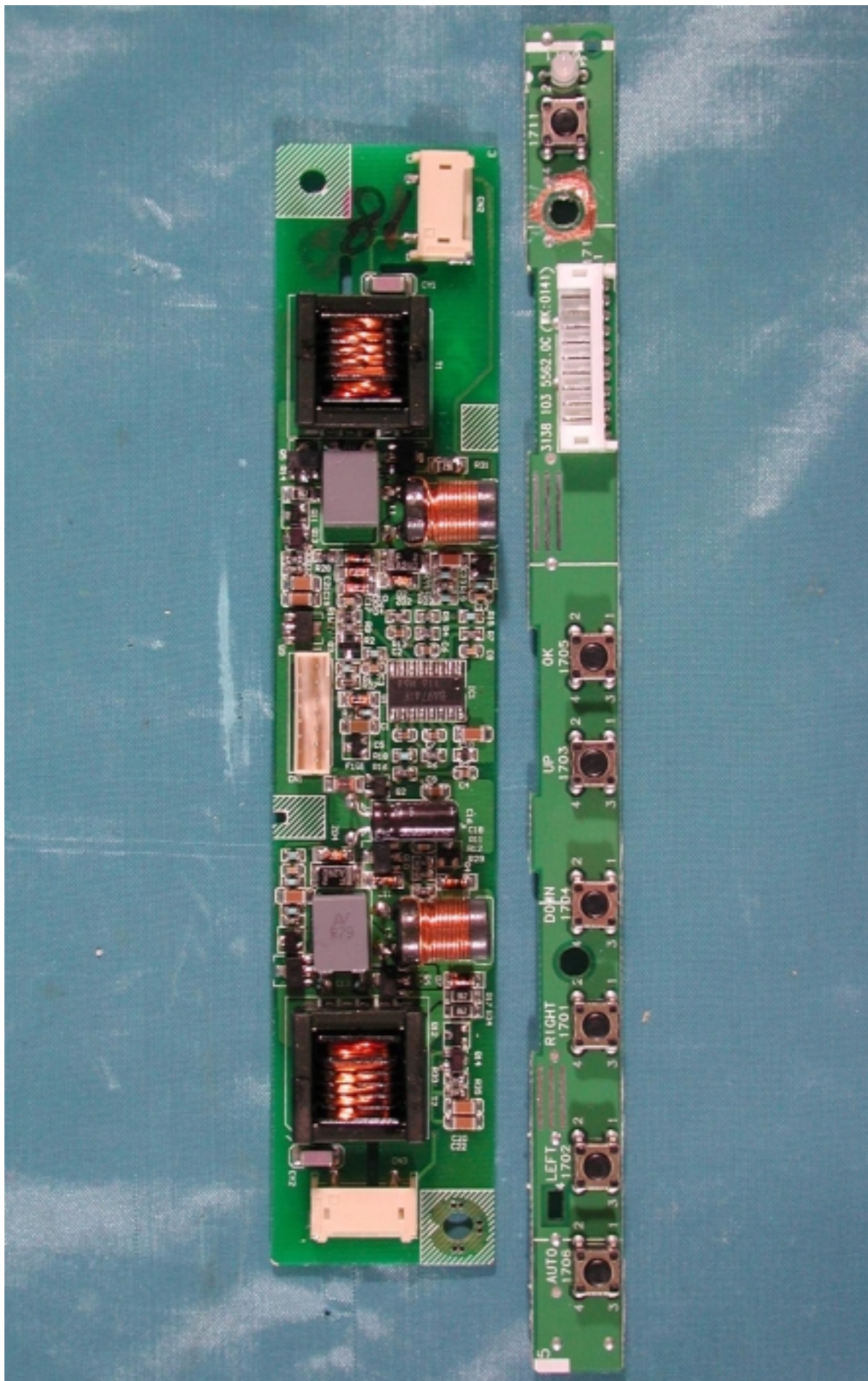
PCB Layout



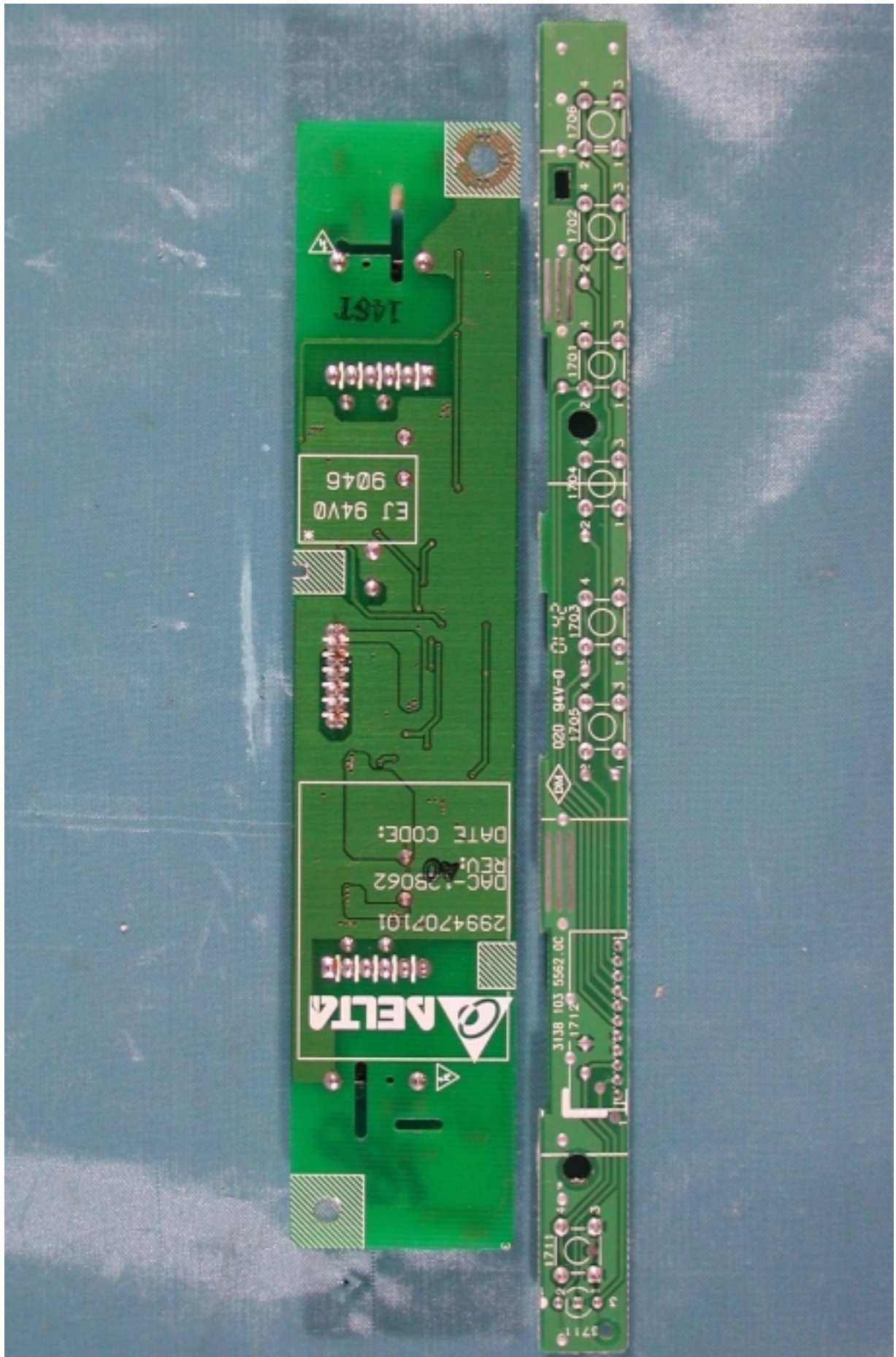
PCB Layout



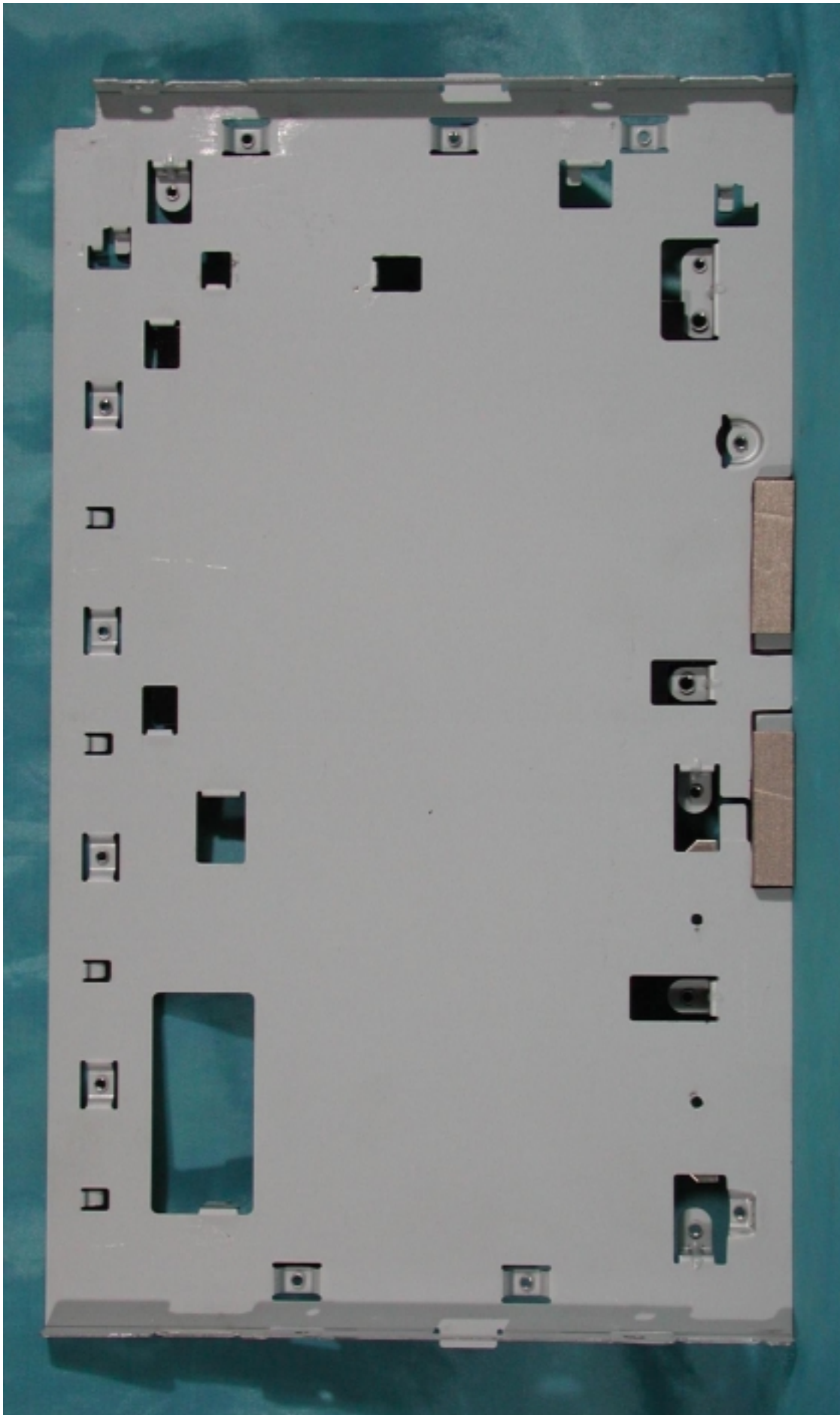
PCB Layout



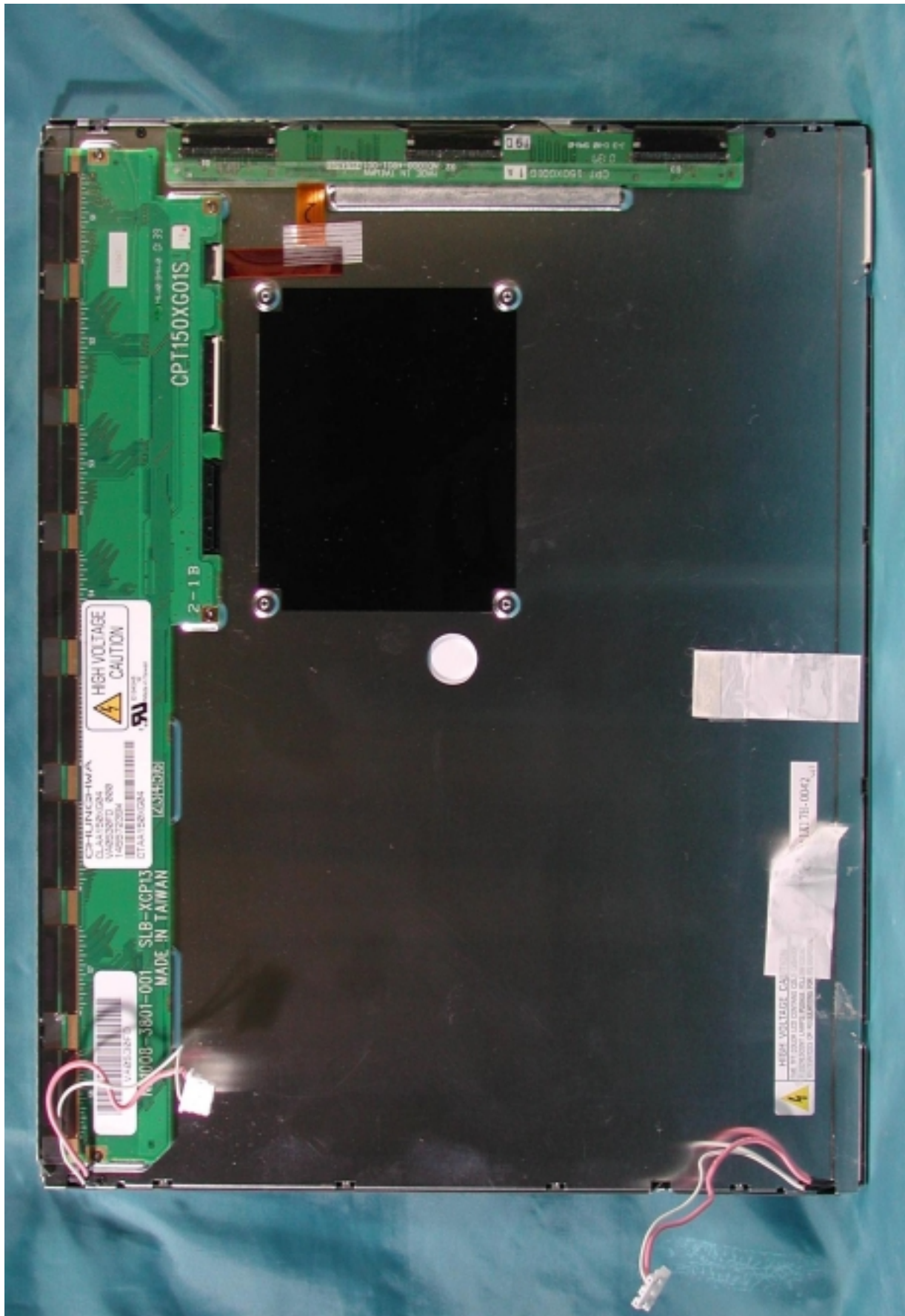
PCB Layout



Plate



LCD Panel



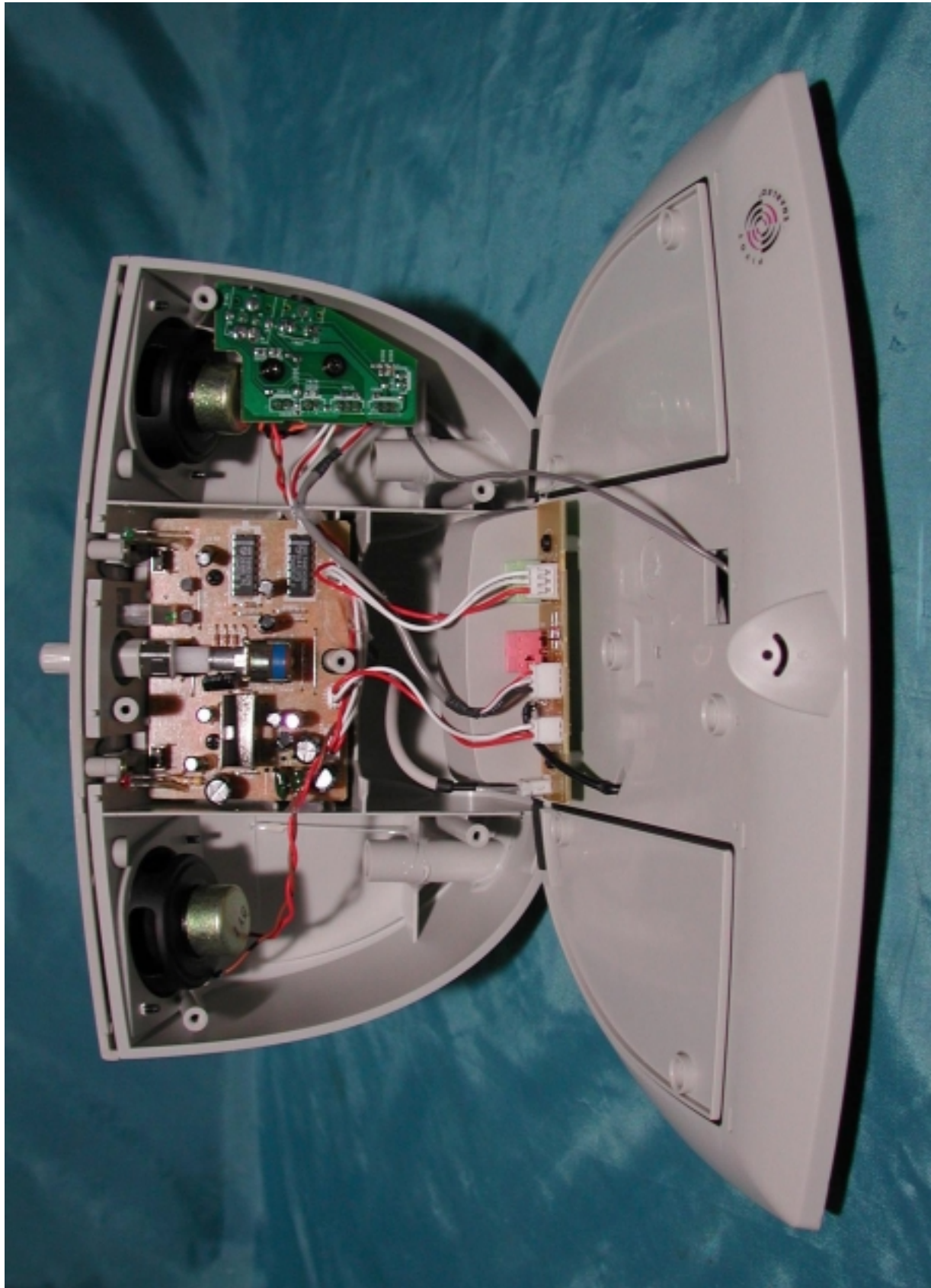
Base View Front



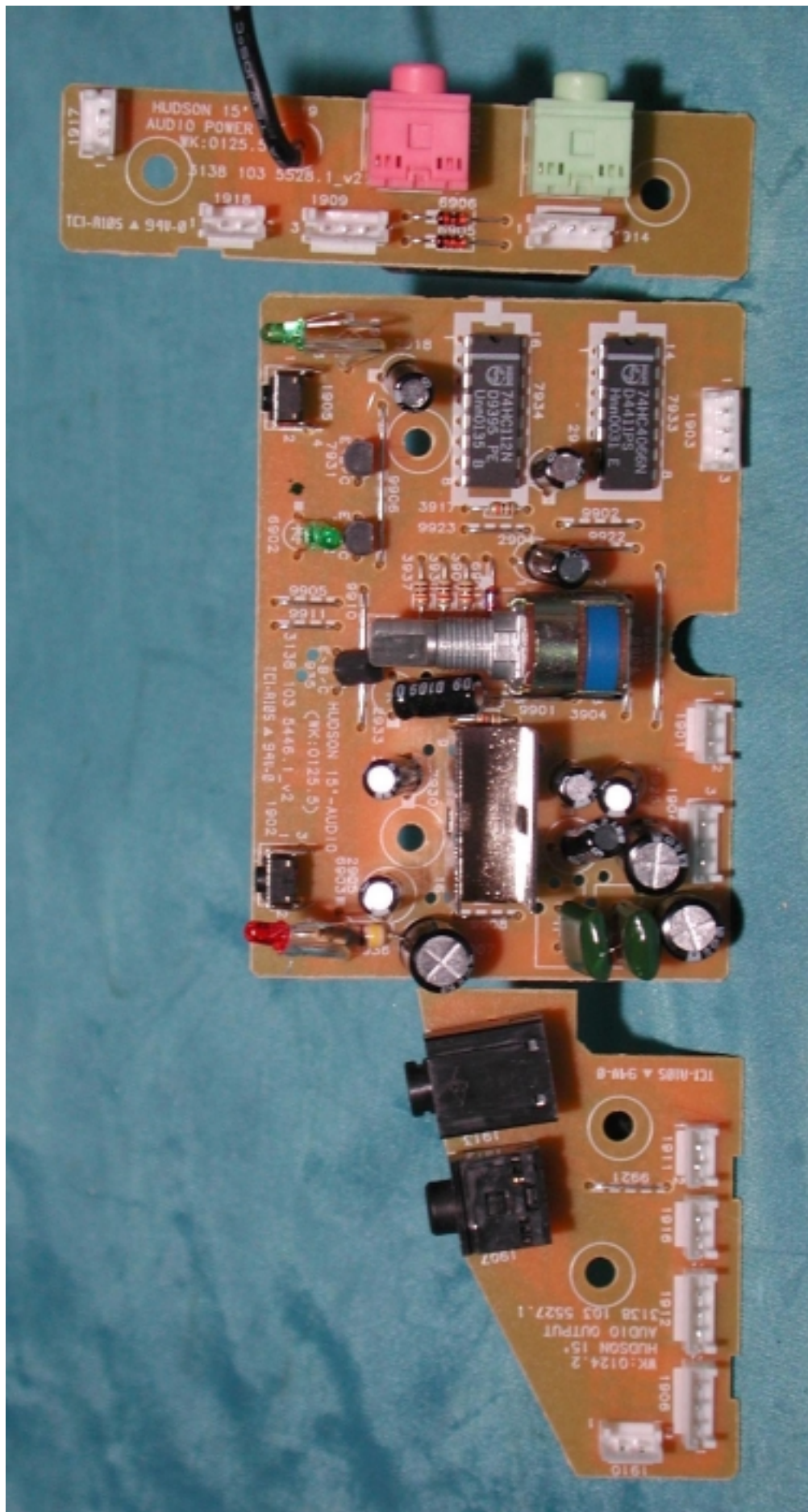
Base View Rear



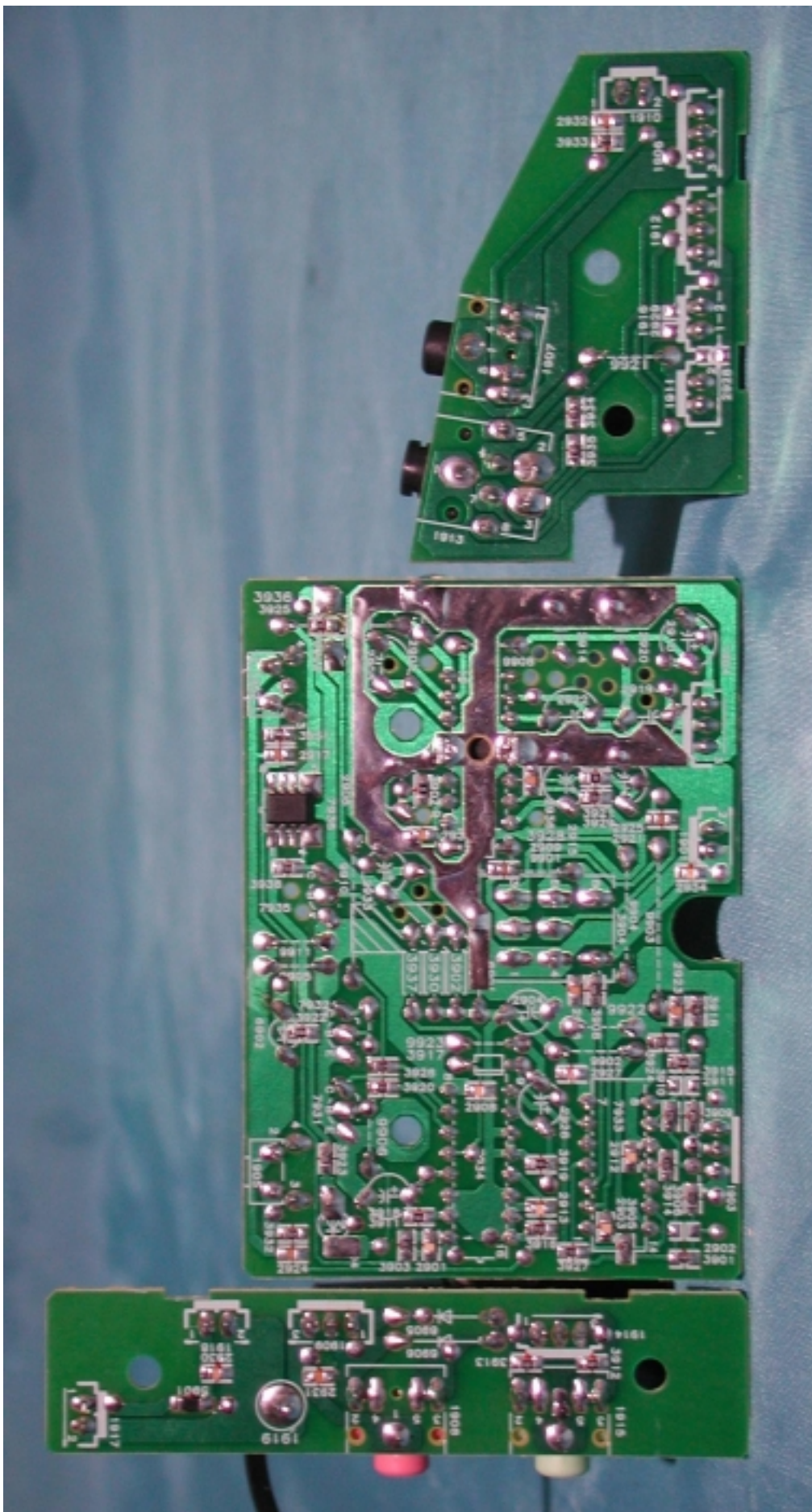
Base Assembly



PCB Layout



PCB Layout



Power Cord and I/F Cables

