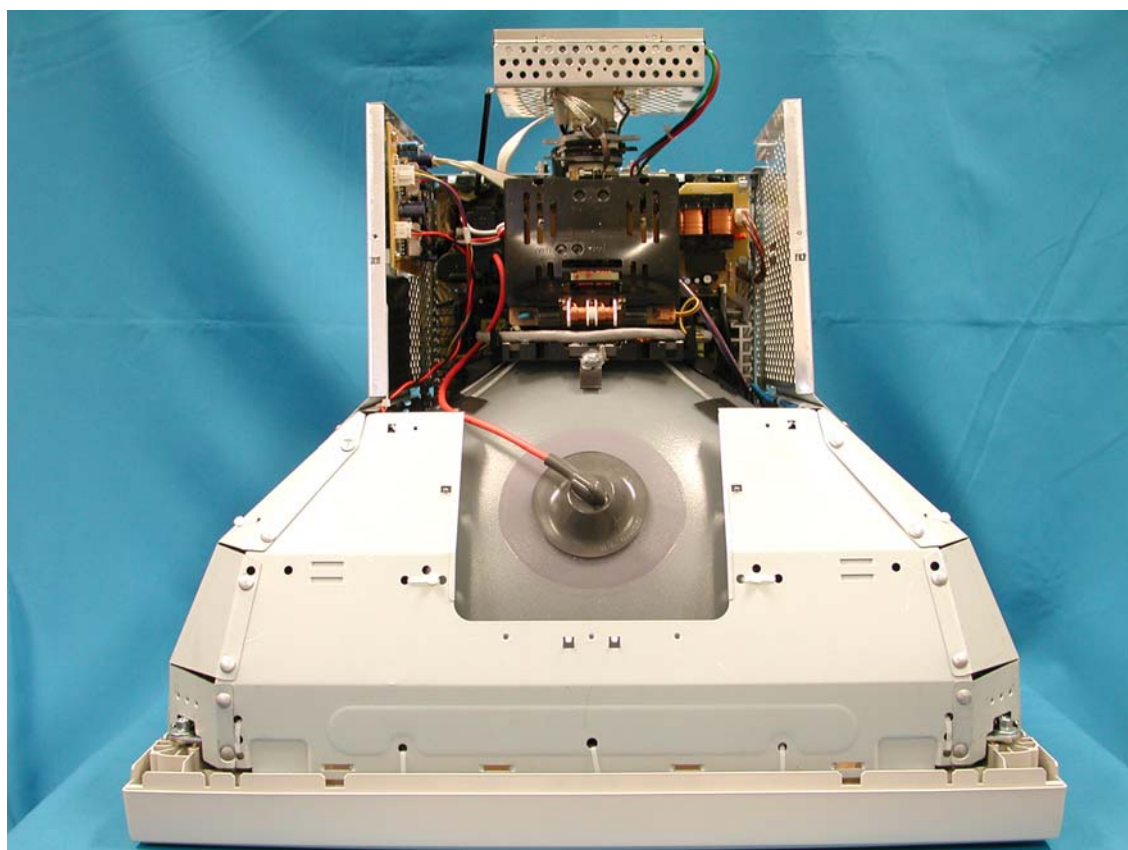


## Label



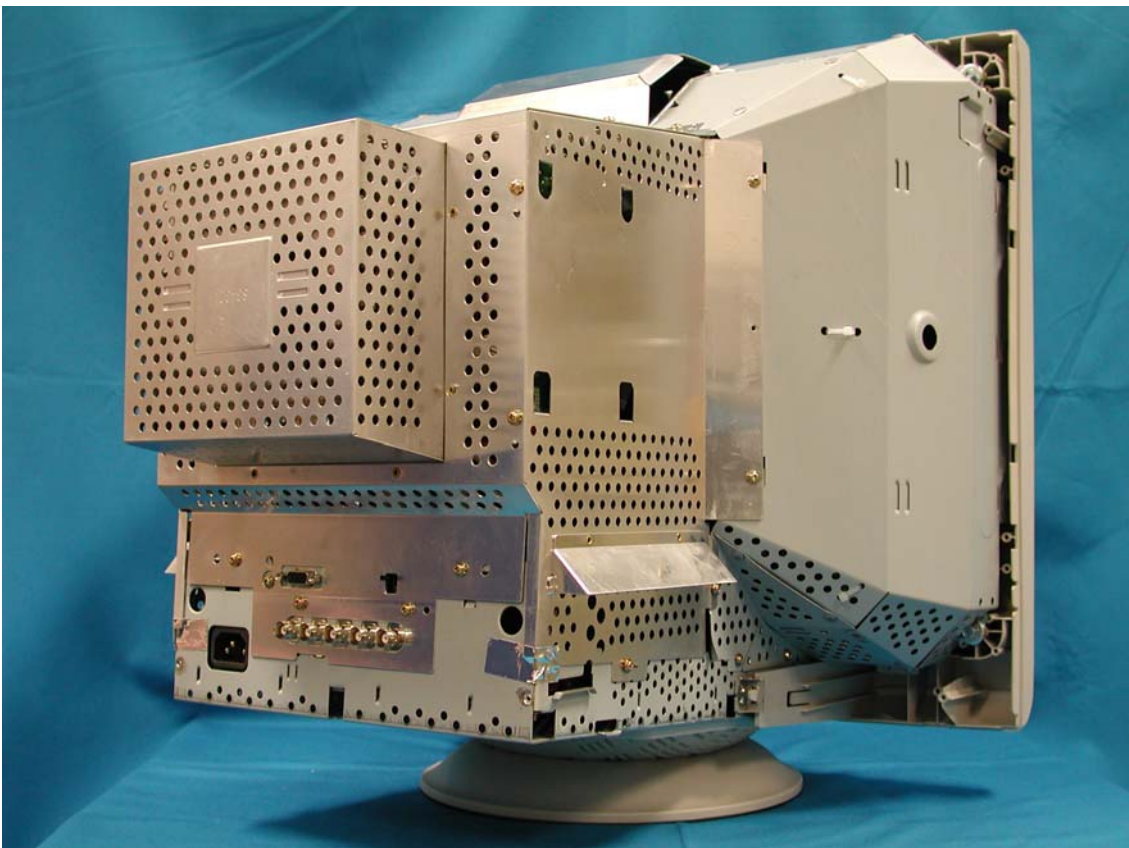
Top View w/o Back cover



Left View w/o Back cover

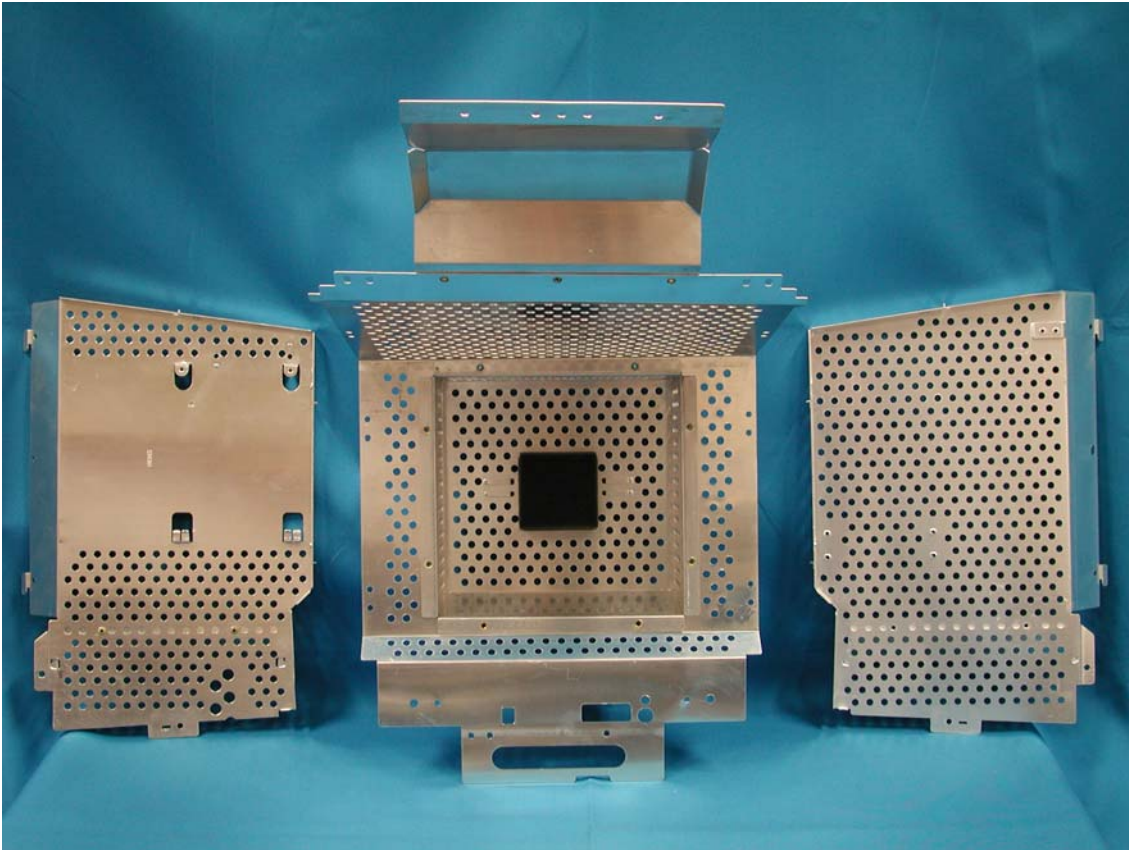


Right View w/o Back cover

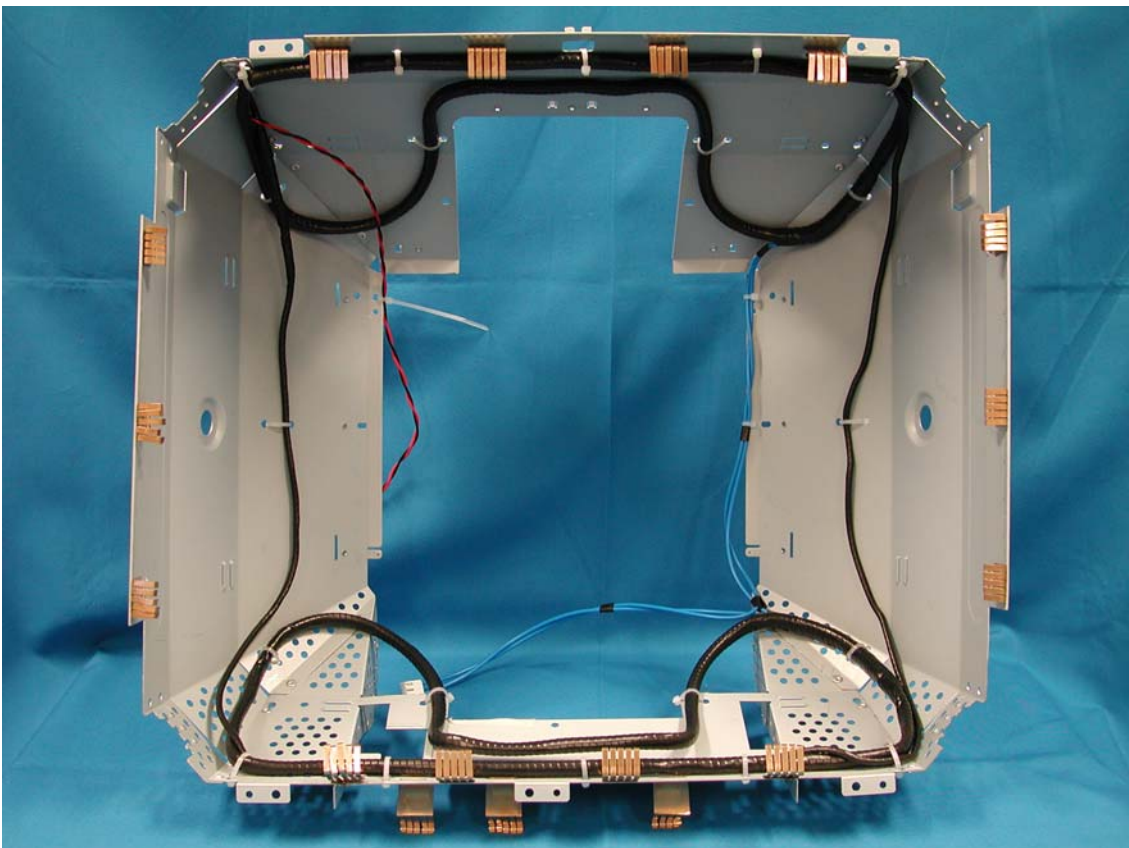




Shielding Cover

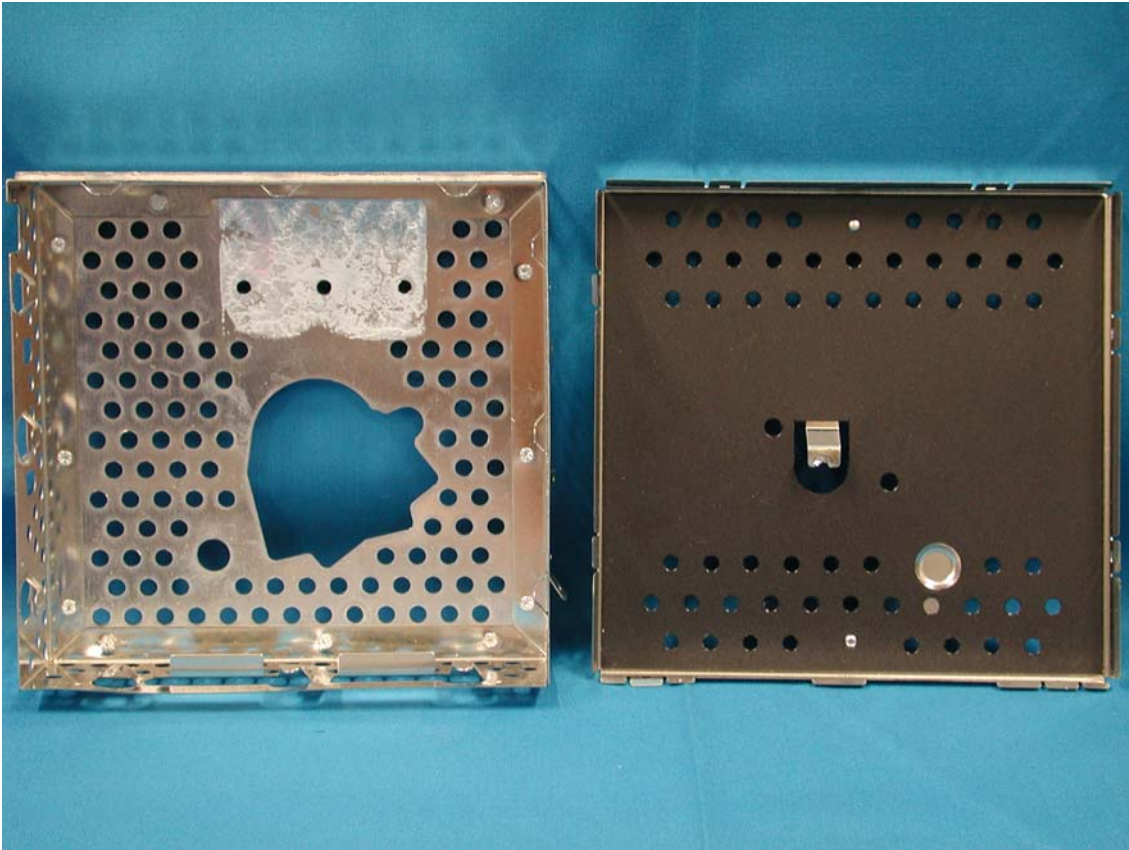


Shielding Cover

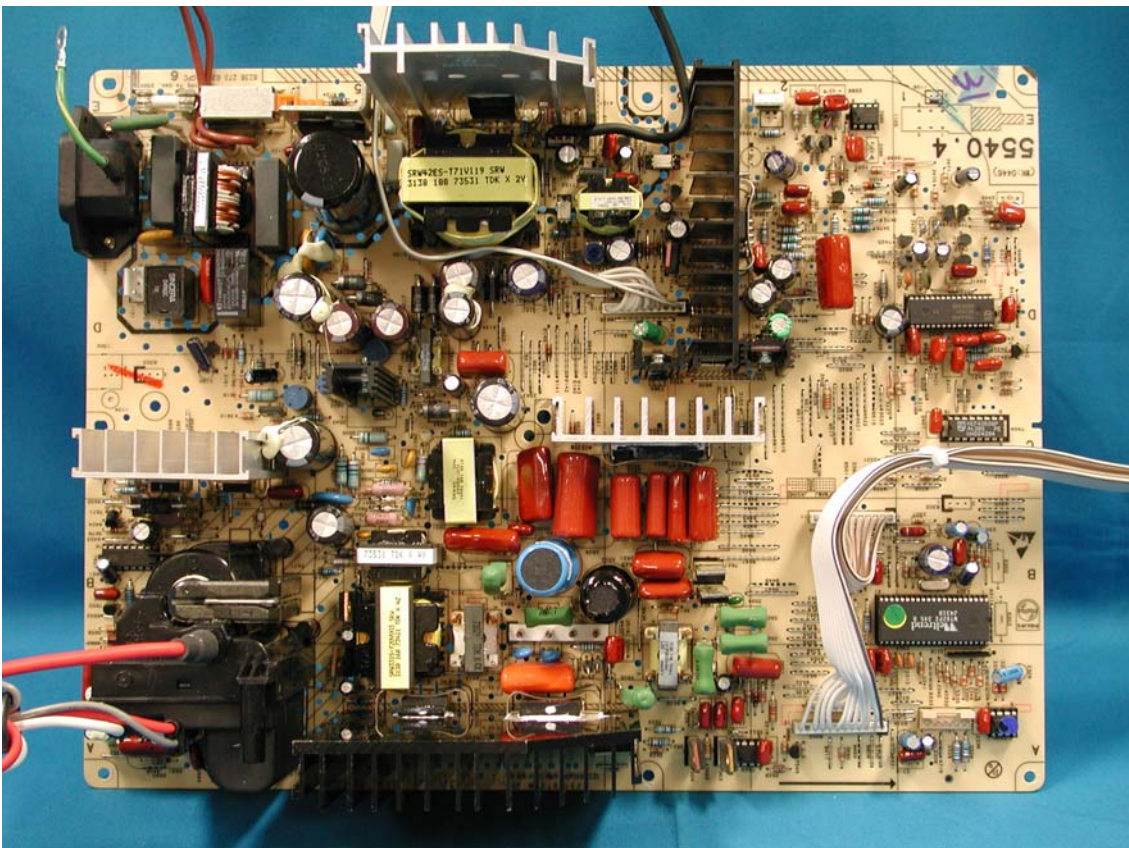




## Shielding Cover

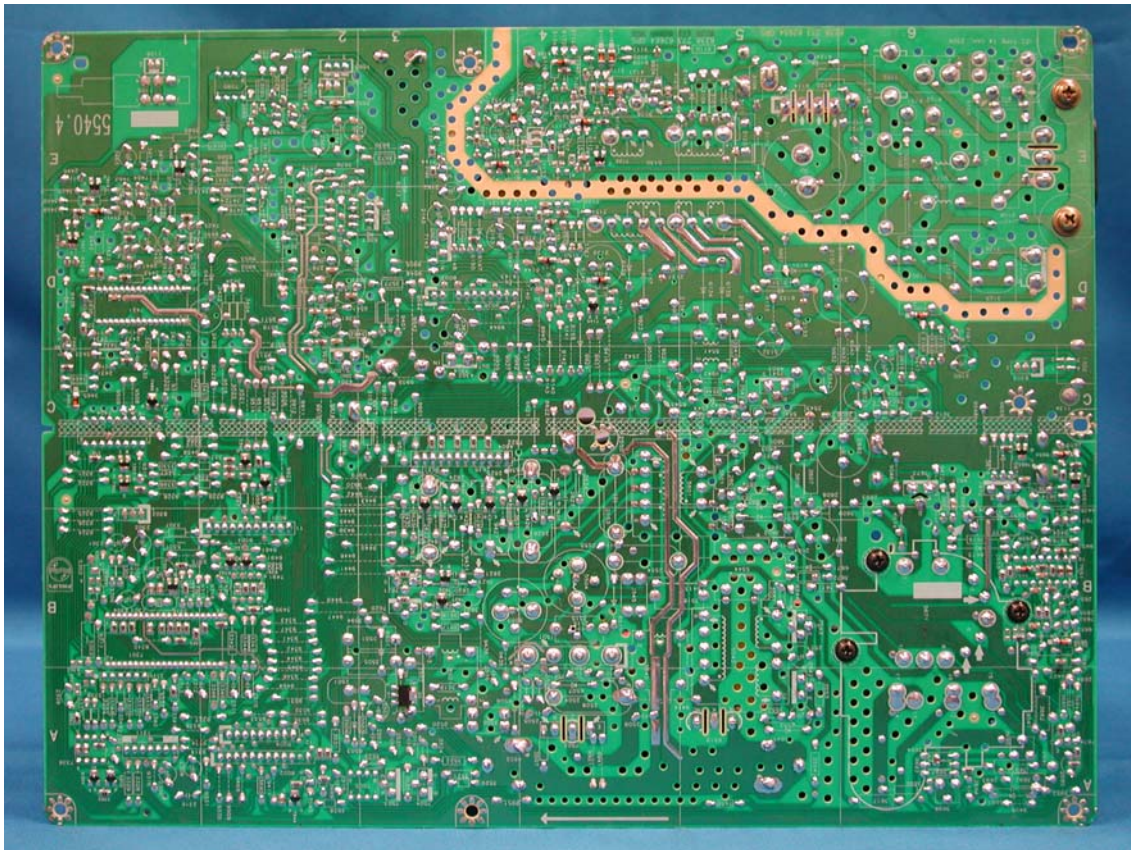


## PCB Layout

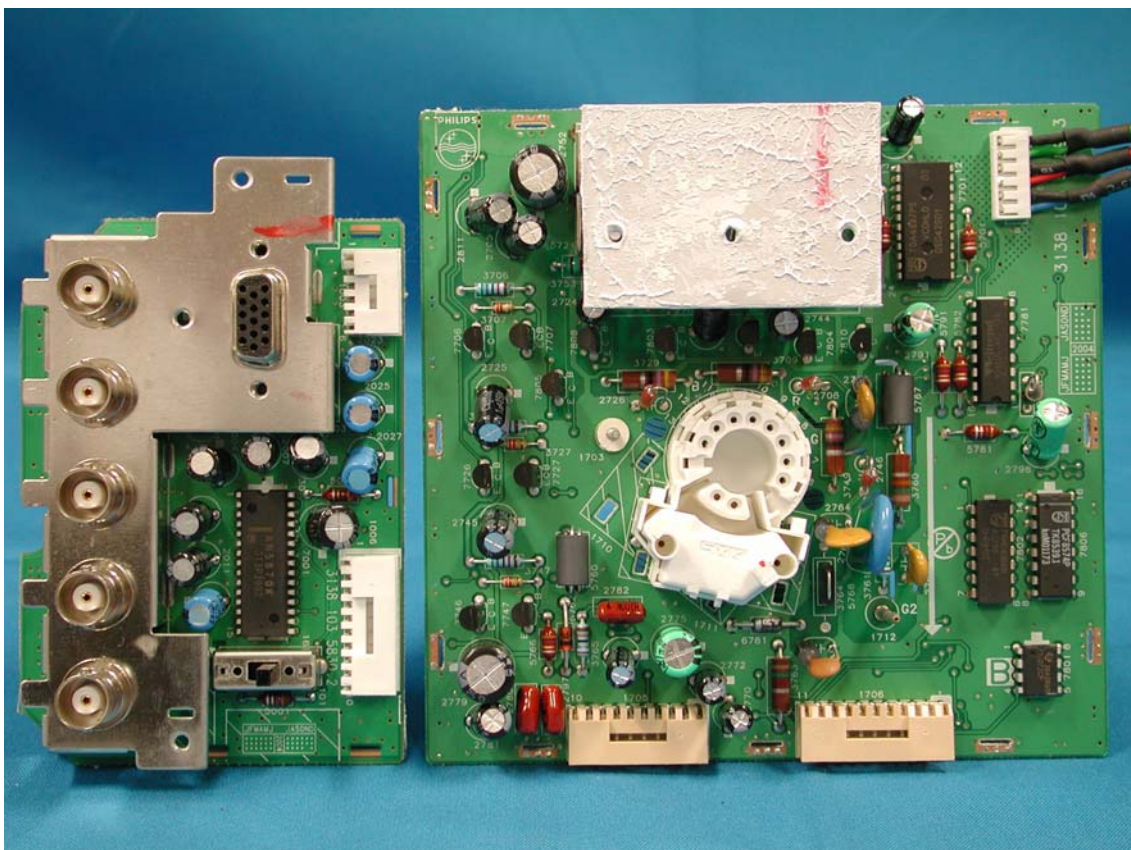




PCB Layout

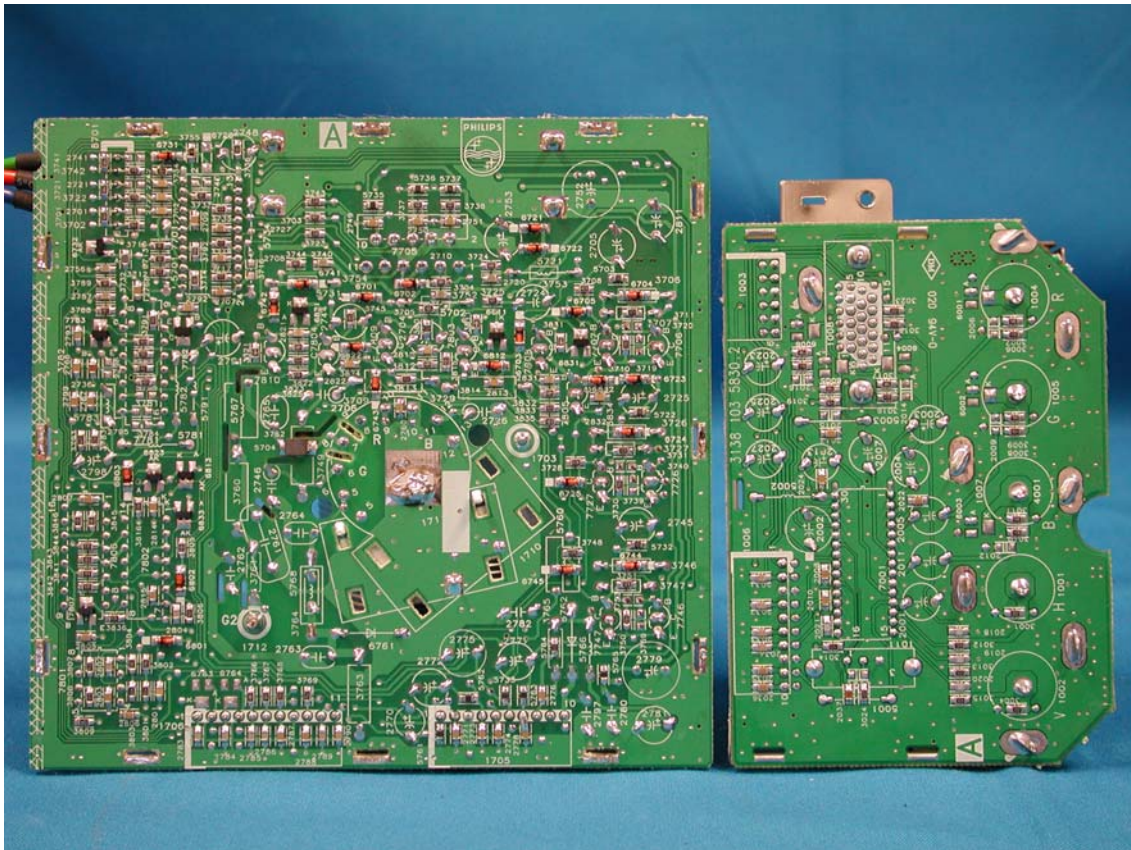


PCB Layout

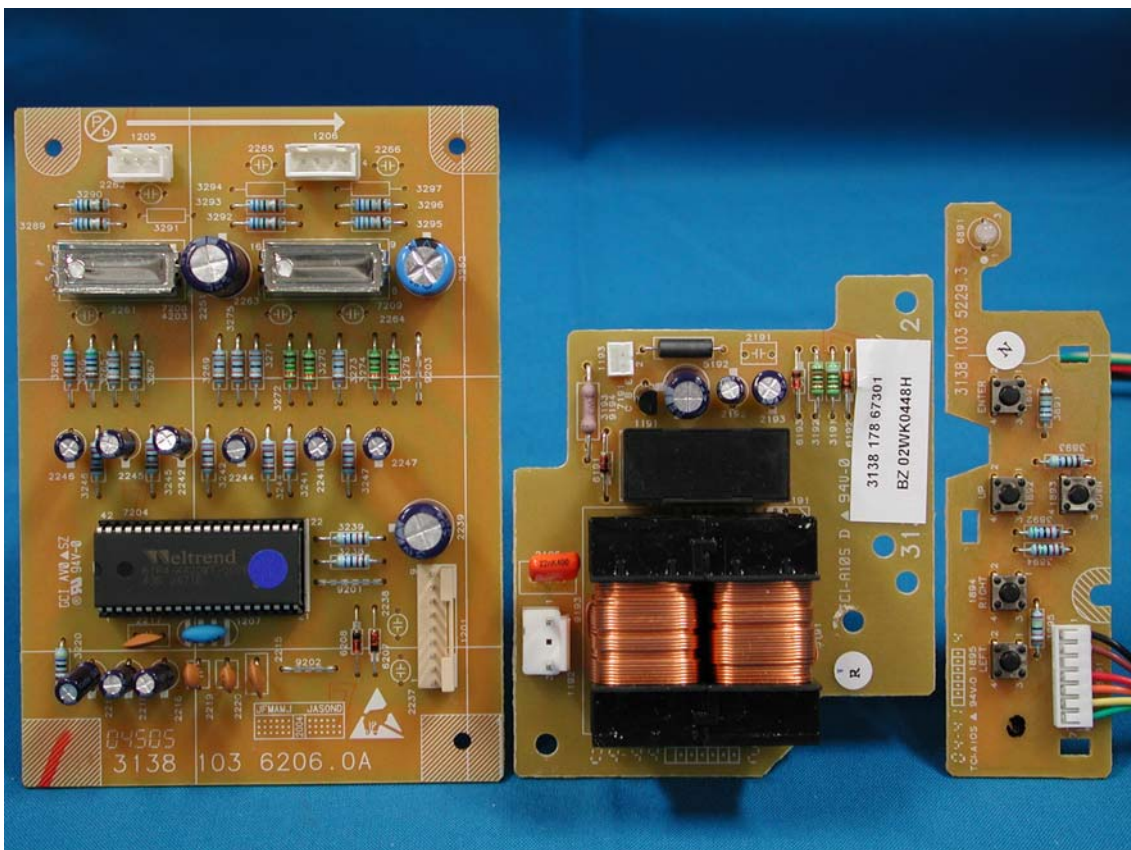




## PCB Layout

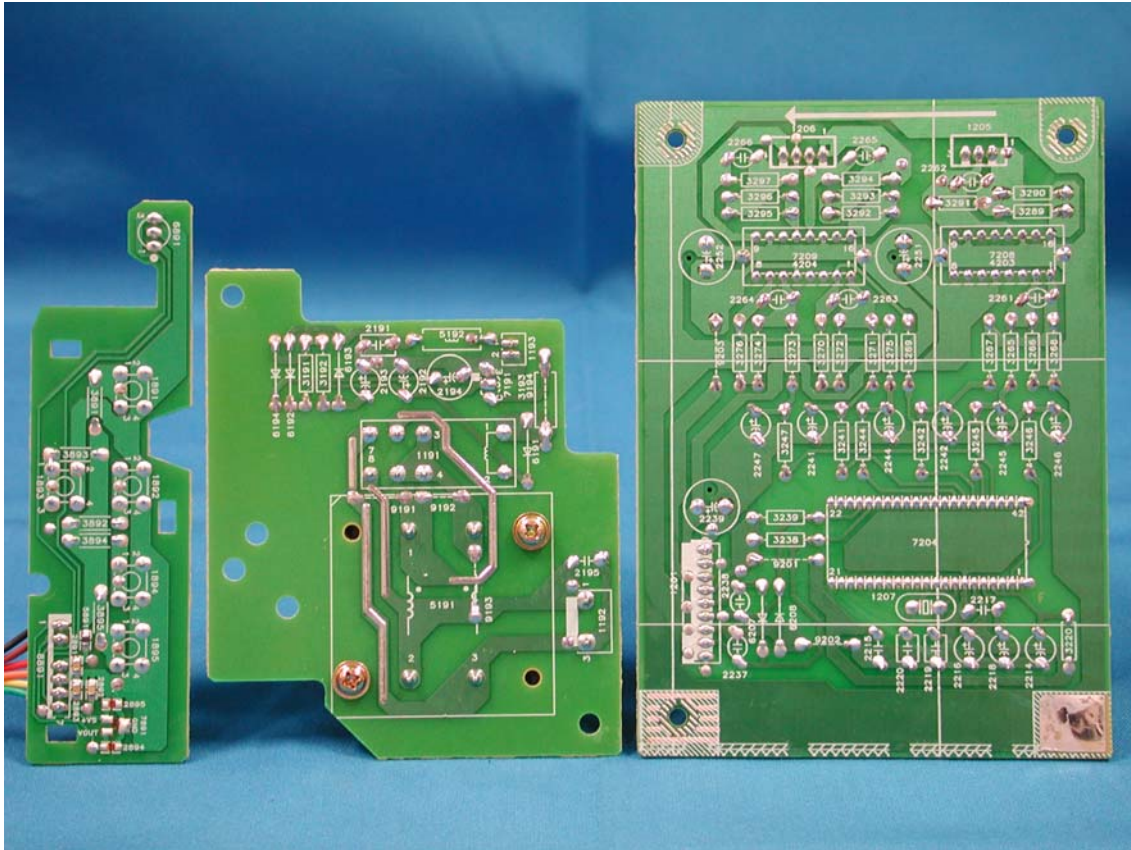


## PCB Layout

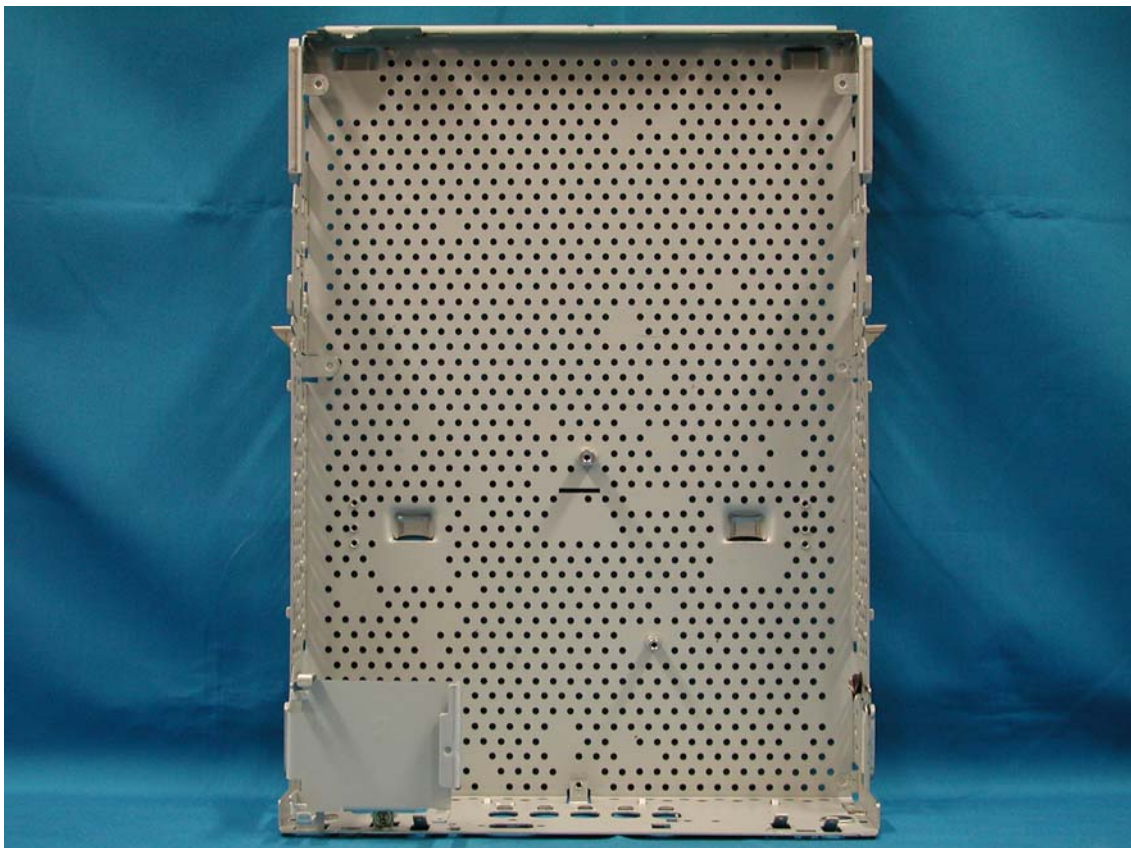




## PCB Layout

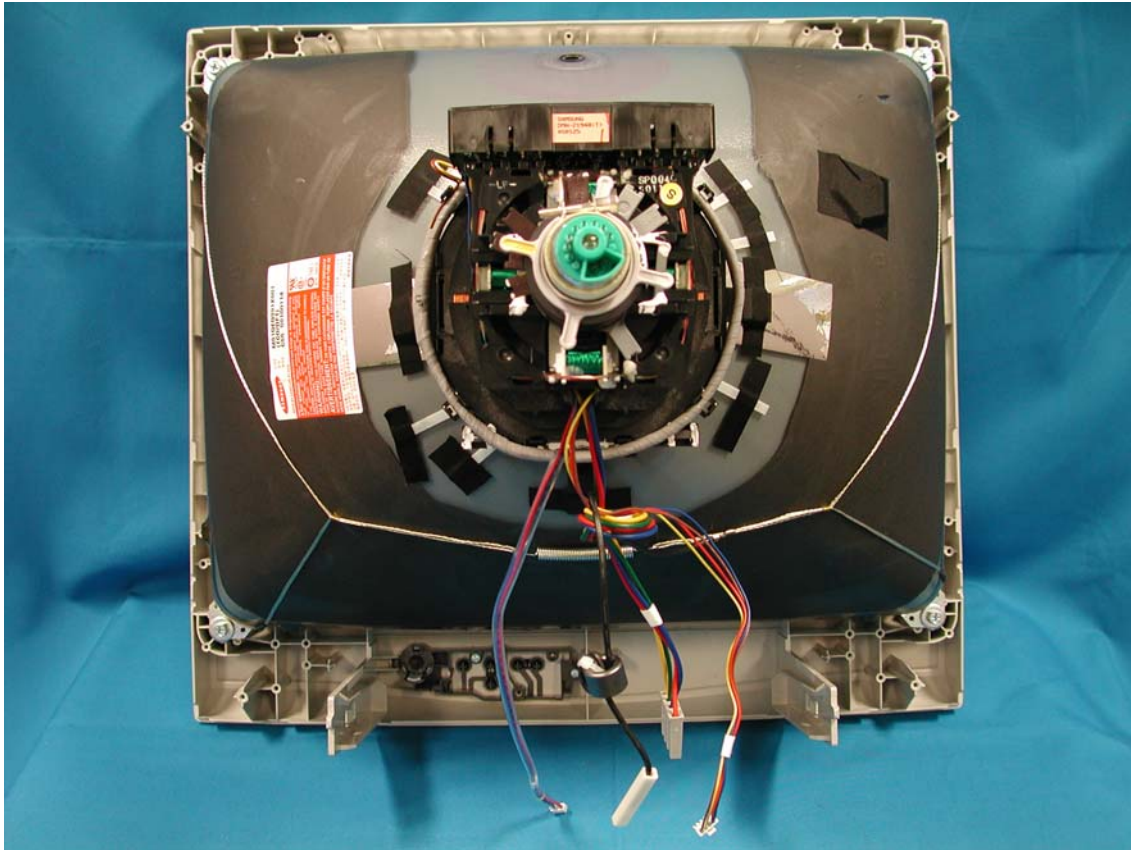


## Plate





CRT assembly



Power Cord and I/F Cables

