

Exhibit 4

Statement of Data Measured and Test Data

1. General Information of EUT

The EUT, 19" LCD color monitor :

Model No. : 109P20
 FCC ID : A3KM092
 Brand : Philips

The monitor automatically scans horizontal frequencies between 30KHz and 107KHz , and vertical frequencies between 50Hz and 160Hz. This color monitor displays sharp and brilliant images of text and graphics with a maximum resolution up to 1600x1200 pixels. .

The monitor has 10 factory-preset modes as indicated in the following table:

	Resolution	H-Frequency	V-Frequency	Remark
M01	640 X 350	31.5KHz	70Hz	Non-interlaced
M02	640 X 480	43.3KHz	85Hz	Non-interlaced
M03	800 X 600	46.8KHz	75Hz	Non-interlaced
M04	800 X 600	53.7KHz	85Hz	Non-interlaced
M05	1024 X 768	60.0KHz	75Hz	Non-interlaced
M06	1024 X 768	68.7KHz	85Hz	Non-interlaced
M07	1280 X 1024	80.0KHz	75Hz	Non-interlaced
M08	1280 X 1024	91.1KHz	85Hz	Non-interlaced
M09	1600 X 1200	93.8KHz	75Hz	Non-interlaced
M10	1600 X 1200	106.3KHz	85Hz	Non-interlaced

2. Test Equipment and Procedure

Test was performed by:

PHILIPS ELECTRONICS INDUSTRIES (TAIWAN) LTD.
 CONSUMER ELECTRONICS DIVISION
 EMI - LAB

5, Tze Chiang 1 Road, Chungli Industrial Park
 P.O. Box 123, Chungli, Taoyuan, Taiwan
 R. O. C.

Tel : 886-3-4549862 Fax : 886-3-4549887
 Internet: ronnie.yang@philips.com

The test was performed in accordance with ANSI C63.4-1992, “AMERICAN NATIONAL STANDARD FOR MEASUREMENT OF RADIO-NOISE EMISSION FROM LOW-VOLTAGE ELECTRICAL AND ELECTRONIC EQUIPMENT IN THE RANGE OF 9KHz TO 40GHz”

Test equipment used for line Conducted and Radiated emissions as following. All equipment were calibrated according to ANSI C63.4-1992 and ISO-9000 requirement unless otherwise specified.

Test Equipment	Model No.	Serial No.	Next Calibrate
Spectrum	HP8568B	2403A06961	11/30/2000
RF Preselector	HP85685A	2415A00346	11/30/2000
QP Adapter	HP85650A	2043A00366	11/30/2000
EMI Receiver	HP85460A	3441A00199	10/28/2000
RFI Filter Section	HP85460A	3330A00177	10/28/2000
EMI Receiver	R & S ESVS30	841977/006	11/18/2000
Biconical Antenna	EMCO 3110B	3222	12/16/2000
Biconical Antenna	EMCO 3110B	3224	12/16/2000
Log-Periodic Antenna	EMCO 3146A	1424	12/20/2000
Log-Periodic Antenna	EMCO 3146A	1425	12/20/2000
LISN	EMCO 3825/2	9311-2153	3/26/2001
LISN	EMCO 3825/2	9311-2154	3/26/2001
Turn Table	EMCO 1060	1068	11/18/2000
Antenna Tower	EMCO 1050	1113	11/18/2000
RF Cable	M17/75-RG214-NE	N/A	11/18/2000
Computer	HP9000/300	2614A78610	N/A
Printer	HP2225A	2728S02586	N/A
Plotter	HP7440A	2539A40856	N/A

Traceability to R.O.C. and international standards is assured by using calibrated all equipment.

For system measurement, the EUT “109P20” was connected to:

Item	Model No.	Serial No.	FCC ID
1. Computer	Artist P-II 450	40371320002	FCC Logo
2. Keyboard	G81-3412LPENDE	G006713	GDDG81-3000
3. Mouse	M-S35	LZA84413108	DZL211029
4. Printer	HP 2225C	3123S97227	DSI6XU2225
5. Modem	USRobotics 268	0002680559278575	CJE-0318
6. Vide Card	ELSA ERAZOR II	868402592	FCC Logo

The system was configured for testing in a typical fashion (as a customer would normally use it) according to ANSI C63.4-1992, please see the photographs for detail.

Both conducted and radiated testing were performed according to the procedure in ANSI C63.4-1992. Conducted testing was performed in screen room and radiated testing was performed in open site at an antenna to EUT distance of 3-meter on horizontal and vertical polarization.

First, pre-scan all modes in screen room then select 3 higher modes (worst case) were tested and reported.

The line conductive interference was tested with 110VAC and 220VAC receptively. Unshielded power cord was used during test.

Tested and reported modes as following:

Report No.	Resolution	Frequencies	I/F Cable
EMI00-043	1600x1200	106.3KHz/85Hz	D-sub
EMI00-043A	1600x1200	93.8KHz/75Hz	D-sub
EMI00-043B	1600x1200	106.3KHz/85Hz	BNC

3. Test Program and Test Results

Set up the EUT and all peripherals as chapter 6 of ANSI C63.4-1992 for AC power line conducted emissions testing and radiated emissions testing.

Turn on the power of EUT and all peripherals, select an appropriate displaying mode using the “setup” software. Then run an EMI test program “HTEST.EMI” as a basic software to execute the EUT operating under test.

- Step 1 : Run the “HTEST.EMI” on personal computer then sends “H” character to monitor continuously until full screen.
- Step 2 : Personal computer sends a complete line of continuously repeating “H” to HP 2225C printer.
- Step 3 : Personal computer sends a file of “H” pattern to floppy disk then read a file of “H” pattern from floppy disk.
- Step 4 : Personal computer sends a file of “H” pattern to hard disk then read a file of “H” pattern from hard disk.
- Step 5 : Personal computer sends a file of “H” patten to USRobotics 268 modem.
- Step 6 : Return to step 1

All data in this report are “PEAK” value within 15dB margin unless otherwise noted.

The radiated (open site) data has included antenna and cable factors, sample calculation:

$$\text{Final Value (dB}\mu\text{V/m)} = \text{Reading (dB}\mu\text{V)} + \text{Antenna Factor (dB)} + \text{Cable Loss (dB)}$$

The measured data of radiated RF interference at open site and line conducted interference as attached.

Uncertainty Statement: The system uncertainties listed below are based on the instrument absolute specifications, and do not include uncertainties of the equipment under test.


Uncertainty for Radiated Emissions Test at 3 meters Test Site

Source of Measurement Uncertainty	Uncertainty/dB
Antenna factor calibration	+/- 2.0
Cable loss calibration	+/- 0.5
Receiver Specification	+/- 1.0
Antenna position var.	+/- 2.0
Measurement distance var.	+/- 0.5
Site Imperfections	+/- 2.0
Mismatch	+/- 1.1
System repeatability	+/- 0.5

Uncertainty for Line Conducted Emissions Test in Screen Room

Source of Measurement Uncertainty	Uncertainty/dB
LISN Specification	+/- 2.0
Cable loss calibration	+/- 0.5
Receiver Specification	+/- 1.0
Pulse Limiter Spec.	+/- 0.3
Measurement distance var.	+/- 0.5
Site Imperfections	+/- 2.0
System repeatability	+/- 0.5

The subject device is in compliance with the limits for a class B digital device, pursuant to part 15, subpart B of the FCC rules.



 Ronnie Yang - Manager, Safety/Dev. PEI-CED
 NVLAP Signatory

FCC TEST REPORT

Report No. : EMI00-043
Tested Date: Oct./03/2000

Test Performed By
Philips Electronics Industries (Taiwan) Ltd.
Business Electronics
EMC Lab.
No. 5, Tze Chiang 1 Road,
Chungli, Taoyuan, Taiwan, R.O.C.
Tel.: + 886-3-454-9862 Fax.: +886-3-454-9887

Manufacturer : Philips Business Electronics

Tested System:

- 1. EUT : 109P20 color monitor s/n: TY005290
FCC ID : A3KM092
- 2. Computer : Artist P-II 450 s/n: 40371320002
FCC ID : FCC Logo
- 3. Keyboard : G81-34121LPENDE s/n: G006713
FCC ID : GDDG81-3000
- 4. Mouse : M-S35 s/n: LZA84413108
FCC ID : DZL211029
- 5. Modem : USRobotics 268 s/n: 002680559278575
FCC ID : CJE-0318
- 6. Printer : HP2225C s/n: 3123S97227
FCC ID : DSI6XU2225
- 7. Video Card : ELSA ERAZOR II s/n: 868402592
FCC ID : FCC Logo

Note: Test was performed in according with FCC measurement procedure ANSI C63.4-1992
“AMERICAN NATIONAL STANDARD FOR MEASUREMENT OF RADIO-NOISE
EMISSION FROM LOW-VOLTAGE ELECTRONIC EQUIPMENT IN THE RANGE
OF 9KHz TO 40GHz”

Monitor was connected to floor mounted AC outlet.
106.3KHz mode (1600x1200/85Hz) was tested.
D-sub I/F cable with two ferrite cores was used.
Non-shield power cord was used during test.

The test equipment used for testing please refer to the list as attached.

Deviation: None

Radiated RF Level – Peak Value

Frequency (MHz)	Horizontal (dB μ v/m)	Vertical (dB μ v/m)	FCC/B Limit (dB μ v/m)
347.58	39.25	38.95	46.0
405.51	35.67	37.97	46.0

637.24	38.78	39.08	46.0
984.82	43.4	43.2	54.0

Spectrum Analyzer Setting:
 RBW: 100KHz
 VBW: 100KHz

Quasi-peak Values were taken with Rohde & Schwarz ESVS 30 EMI test receiver.

Radiated RF Level – OP Value

Frequency (MHz)	Horizontal (dBuv/m)	Vertical (dBuv/m)	FCC/B Limit (dBuv/m)
57.93	30.78	33.88	40.0
115.86	37.16	39.56	43.5
173.79	38.12	37.22	43.5
231.72	40.8	41.9	46.0
289.65	42.9	43.5	46.0
463.46	38.51	41.81	46.0
521.38	40.66	43.76	46.0
579.31	40.74	43.34	46.0
695.17	38.18	41.38	46.0
753.1	40.64	42.14	46.0
811.03	37.97	39.07	46.0
868.96	40.15	39.35	46.0

The spectrum was scanned from 30 to 1000MHz and the significant emissions were recorded.
 Test distance between device under test and receiving antenna was 3-meter.

Sample of calculation:

Final value (dBuv/m) = Antenna Factor (dB) + Cable Loss (dBuv) + Reading (dBuv/m)

Tested By:

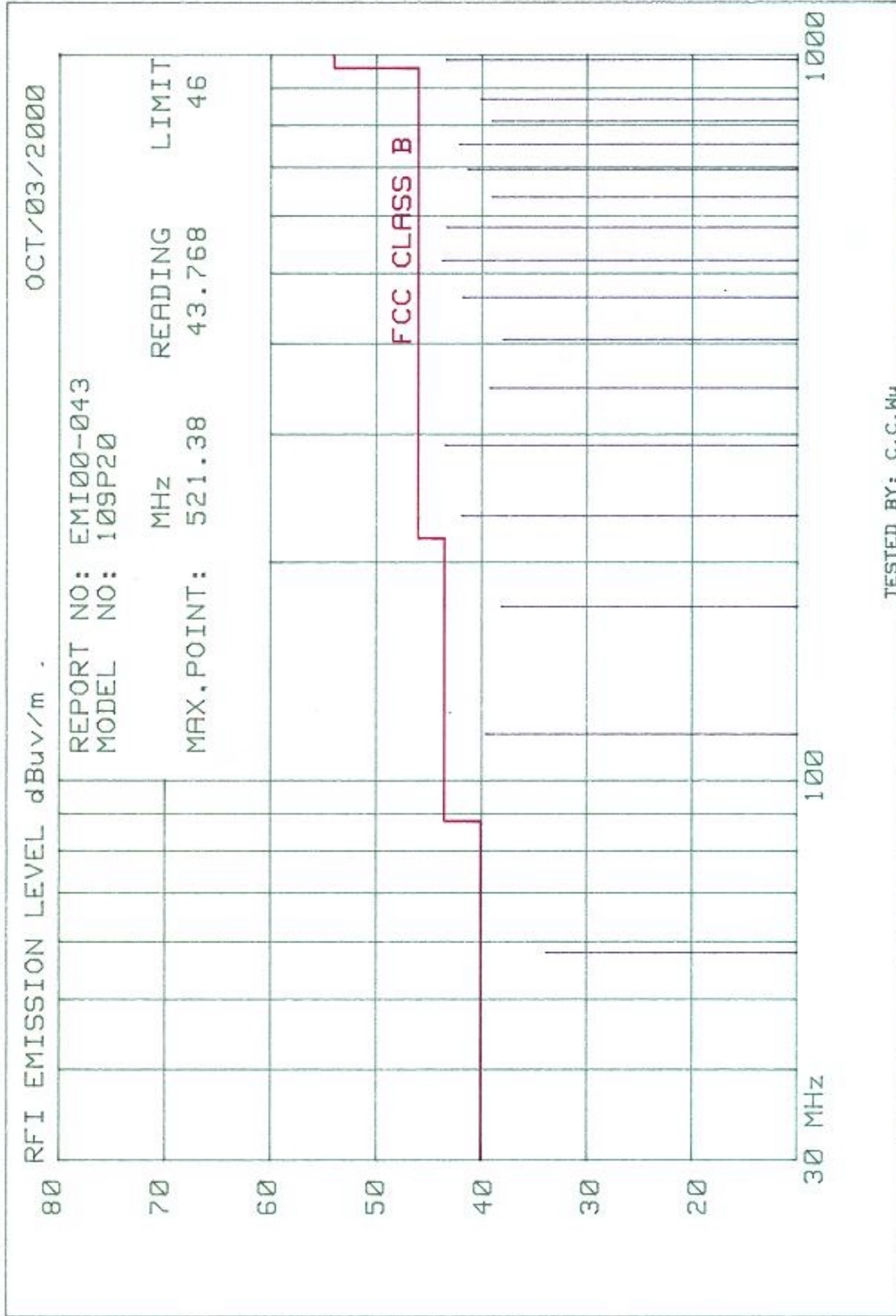


C.C.Wu

Checked By:



K.J.Hsu – EMC Engineer
 NVLAP Signatory

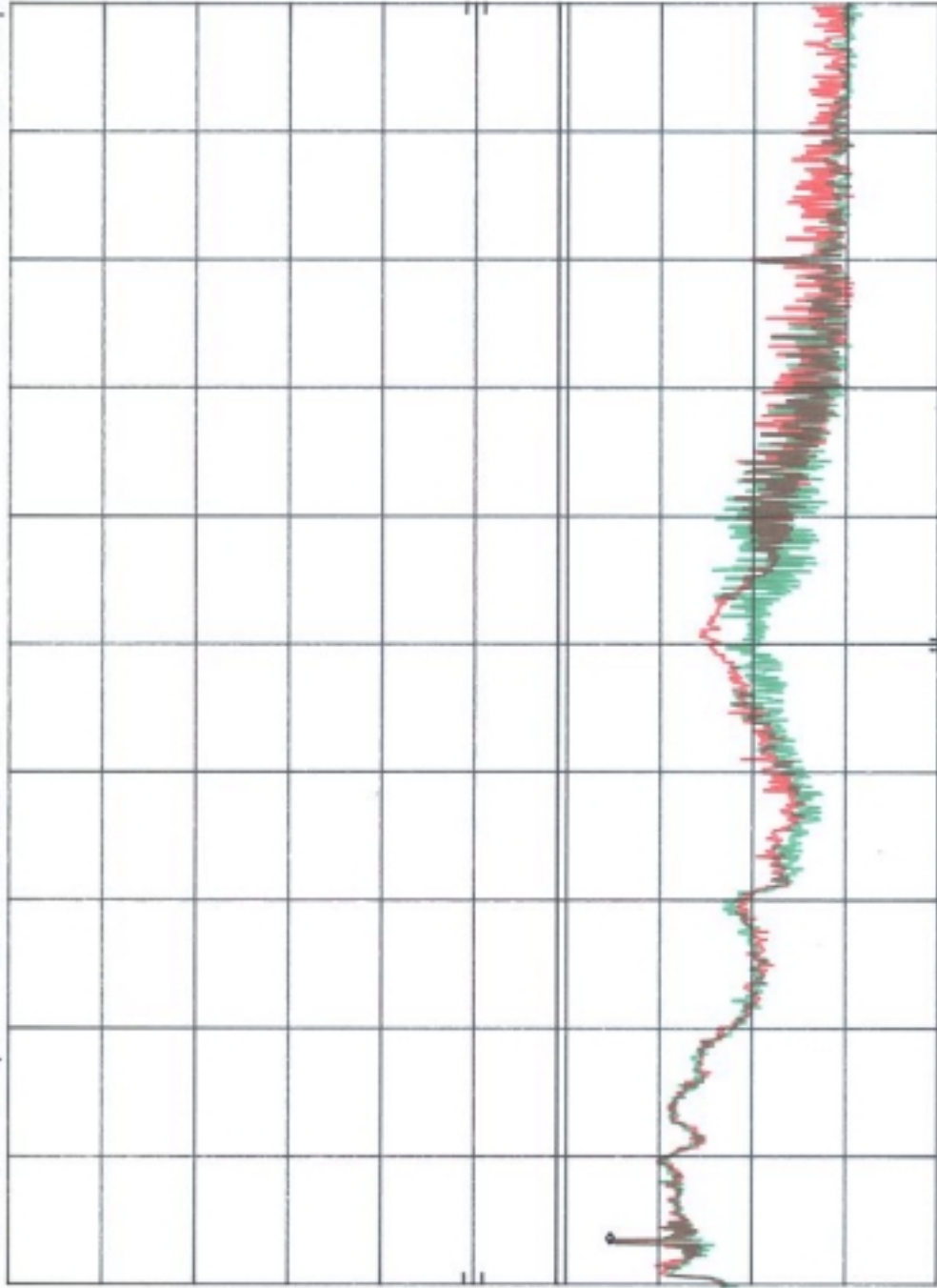


A3KM092 1600X1200/85Hz W/D-SUB I/O CABLE AC110VMKR 1.48 MHz
 REF 107.0 dBμV ATTEN 10 dB 42.20 dBμV

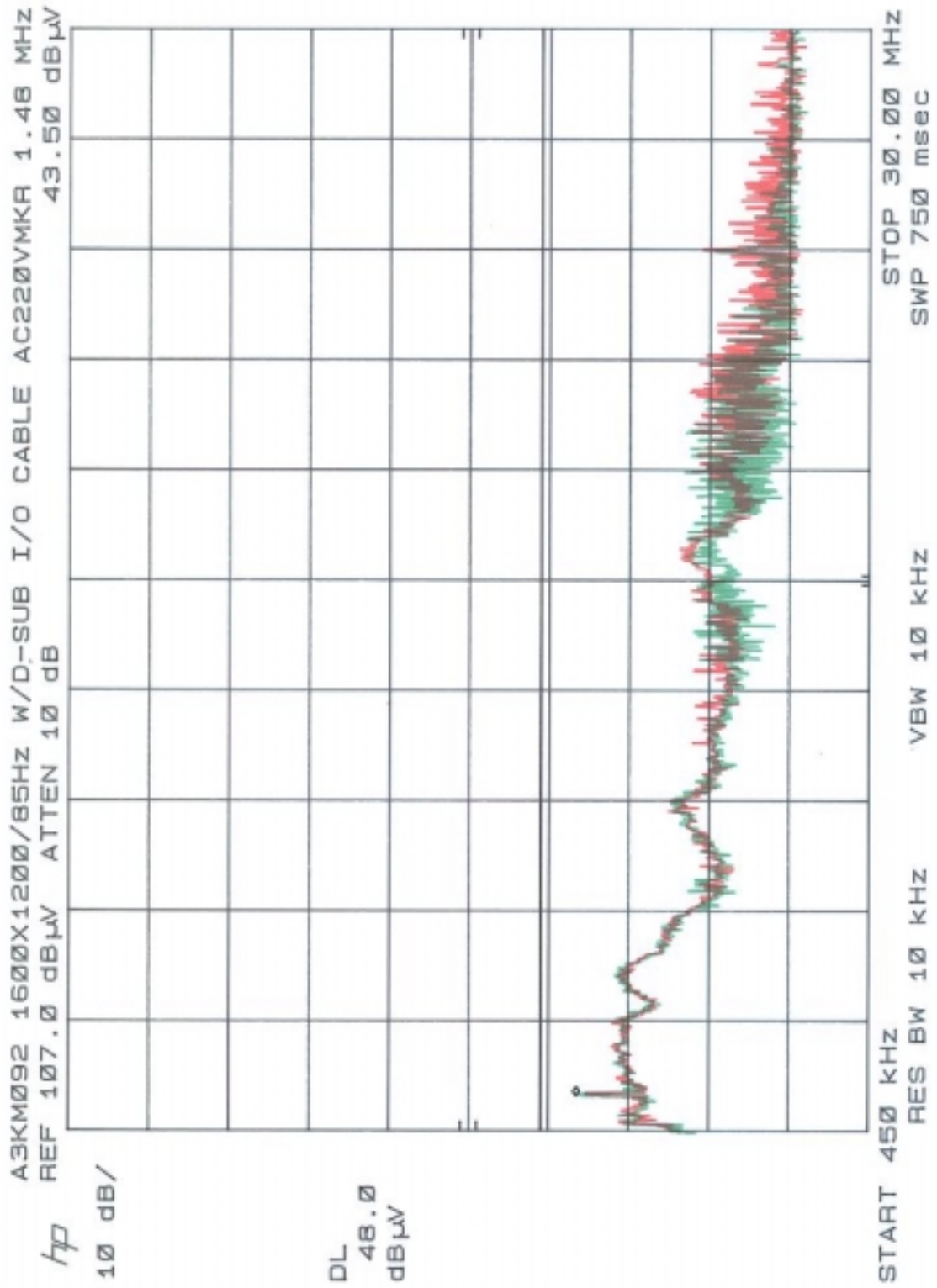
hp

10 dB/

DL
 48.0
 dBμV



START 450 KHz RES BW 10 KHz VBW 10 KHz STOP 30.00 MHz SWP 750 msec



FCC TEST REPORT

Report No. : EMI00-043A

Tested Date: Oct./04/2000

Test Performed By
Philips Electronics Industries (Taiwan) Ltd.
Business Electronics
EMC Lab.
No. 5, Tze Chiang 1 Road,
Chungli, Taoyuan, Taiwan, R.O.C.
Tel.: + 886-3-454-9862 Fax.: +886-3-454-9887

Manufacturer : Philips Business Electronics

Tested System:

- 1. EUT : 109P20 color monitor s/n: TY005290
FCC ID : A3KM092
- 2. Computer : Artist P-II 450 s/n: 40371320002
FCC ID : FCC Logo
- 3. Keyboard : G81-34121LPENDE s/n: G006713
FCC ID : GDDG81-3000
- 4. Mouse : M-S35 s/n: LZA84413108
FCC ID : DZL211029
- 5. Modem : USRobotics 268 s/n: 002680559278575
FCC ID : CJE-0318
- 6. Printer : HP2225C s/n: 3123S97227
FCC ID : DSI6XU2225
- 7. Video Card : ELSA ERAZOR II s/n: 868402592
FCC ID : FCC Logo

Note: Test was performed in according with FCC measurement procedure ANSI C63.4-1992
“AMERICAN NATIONAL STANDARD FOR MEASUREMENT OF RADIO-NOISE
EMISSION FROM LOW-VOLTAGE ELECTRONIC EQUIPMENT IN THE RANGE
OF 9KHz TO 40GHz”

Monitor was connected to floor mounted AC outlet.

93.8KHz mode (1600x1200/75Hz) was tested.

D-sub I/F cable with two ferrite cores was used.

Non-shield power cord was used during test.

The test equipment used for testing please refer to the list as attached.

Deviation: None

Radiated RF Level – Peak Value

Frequency (MHz)	Horizontal (dBuv/m)	Vertical (dBuv/m)	FCC/B Limit (dBuv/m)
49.52	28.9	31.9	40.0
198.08	35.68	ambient	43.5

247.6	37.82	37.02	46.0
346.65	34.32	34.62	46.0
396.19	35.55	38.65	46.0
445.71	36.8	38.6	46.0
594.27	ambient	39.42	46.0
643.79	38.56	39.16	46.0

Spectrum Analyzer Setting:

RBW: 100KHz

VBW: 100KHz

Quasi-peak Values were taken with Rohde & Schwarz ESVS 30 EMI test receiver.


Radiated RF Level – OP Value

Frequency (MHz)	Horizontal (dBuV/m)	Vertical (dBuV/m)	FCC/B Limit (dBuV/m)
148.56	36.19	34.19	43.5
297.14	40.84	42.54	46.0
495.23	38.34	42.94	46.0
544.75	39.28	42.58	46.0
693.32	36.43	39.23	46.0
742.84	37.08	37.28	46.0
792.36	36.27	37.47	46.0
841.88	36.87	38.47	46.0

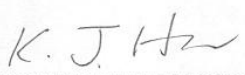
The spectrum was scanned from 30 to 1000MHz and the significant emissions were recorded.
Test distance between device under test and receiving antenna was 3-meter.

Sample of calculation:

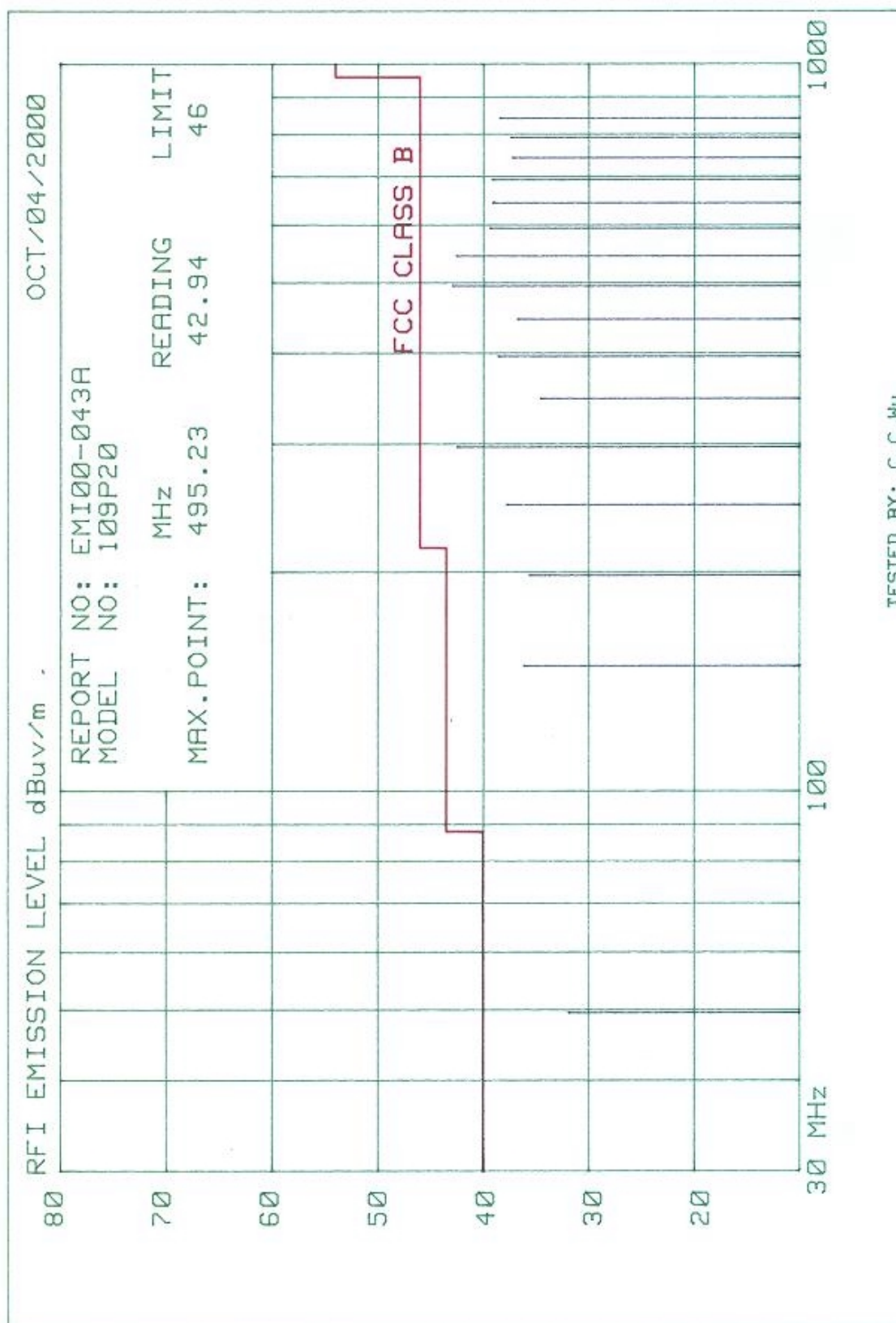
Final value (dBuV/m) = Antenna Factor (dB) + Cable Loss (dBuV) + Reading (dBuV/m)

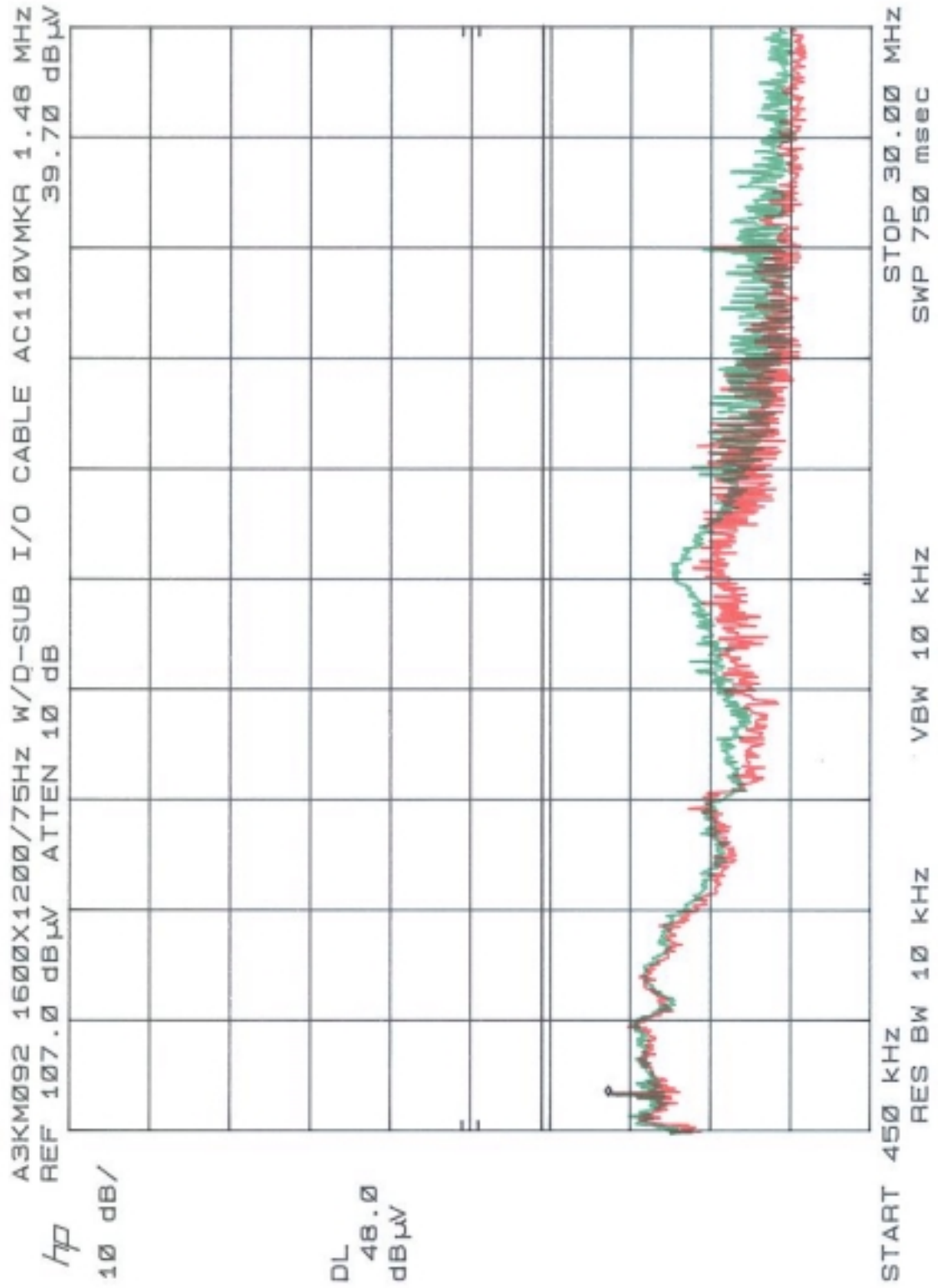
Tested By: 

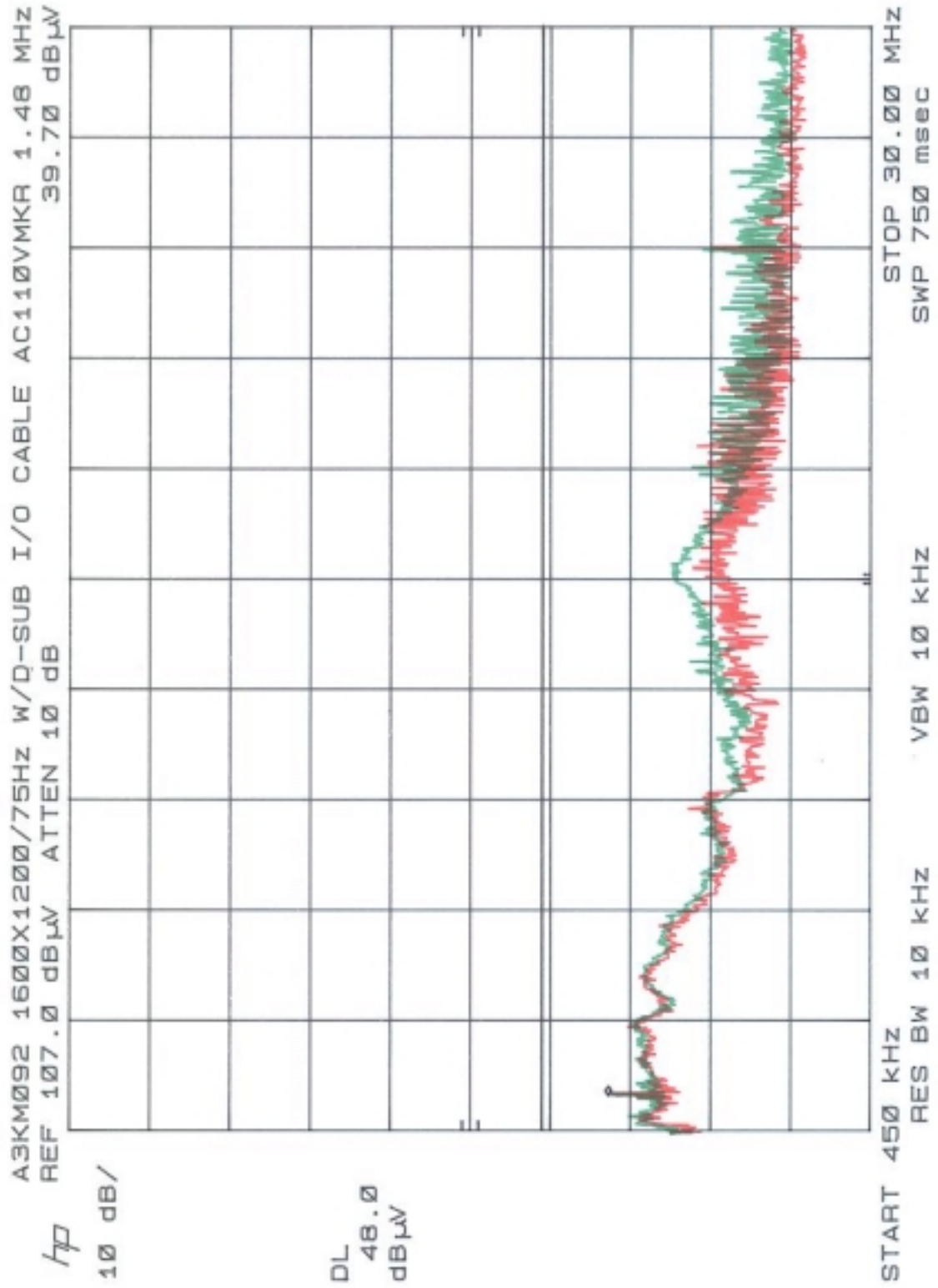
C.C.Wu

Checked By: 

K.J.Hsu – EMC Engineer
NVLAP Signatory







FCC TEST REPORT

Report No. : EMI00-043B

Tested Date: Oct./05/2000

Test Performed By
 Philips Electronics Industries (Taiwan) Ltd.
 Business Electronics
 EMC Lab.
 No. 5, Tze Chiang 1 Road,
 Chungli, Taoyuan, Taiwan, R.O.C.
 Tel.: + 886-3-454-9862 Fax.: +886-3-454-9887

Manufacturer : Philips Business Electronics

Tested System:

1. EUT : 109P20 color monitor s/n: TY005290
FCC ID : A3KM092
2. Computer : Artist P-II 450 s/n: 40371320002
FCC ID : FCC Logo
3. Keyboard : G81-34121LPENDE s/n: G006713
FCC ID : GDDG81-3000
4. Mouse : M-S35 s/n: LZA84413108
FCC ID : DZL211029
5. Modem : USRobotics 268 s/n: 002680559278575
FCC ID : CJE-0318
6. Printer : HP2225C s/n: 3123S97227
FCC ID : DSI6XU2225
7. Video Card : ELSA ERAZOR II s/n: 868402592
FCC ID : FCC Logo

Note: Test was performed in according with FCC measurement procedure ANSI C63.4-1992
 “AMERICAN NATIONAL STANDARD FOR MEASUREMENT OF RADIO-NOISE
 EMISSION FROM LOW-VOLTAGE ELECTRONIC EQUIPMENT IN THE RANGE
 OF 9KHz TO 40GHz”

Monitor was connected to floor mounted AC outlet.
 106.3KHz mode (1600x1200/85Hz) was tested.
 BNC I/F cable with one ferrite cores was used.
 Non-shield power cord was used during test.

The test equipment used for testing please refer to the list as attached.

Deviation: None

Radiated RF Level – Peak Value

Frequency (MHz)	Horizontal (dBuv/m)	Vertical (dBuv/m)	FCC/B Limit (dBuv/m)
231.72	37.1	39.4	46.0
405.51	35.17	35.47	46.0
984.82	44.2	44.5	54.0

Spectrum Analyzer Setting:

RBW: 100KHz

VBW: 100KHz

Quasi-peak Values were taken with Rohde & Schwarz ESVS 30 EMI test receiver.

Radiated RF Level – OP Value

Frequency (MHz)	Horizontal (dBuv/m)	Vertical (dBuv/m)	FCC/B Limit (dBuv/m)
57.93	28.58	31.98	40.0
115.86	36.66	37.06	43.5
173.79	37.02	38.12	43.5
289.65	42.2	43.5	46.0
347.58	38.75	40.65	46.0
463.46	37.91	40.51	46.0
521.38	37.66	40.56	46.0
579.31	41.64	42.94	46.0
637.24	34.68	37.58	46.0
753.1	42.04	43.54	46.0
811.03	40.97	43.77	46.0
868.96	42.55	43.85	46.0

The spectrum was scanned from 30 to 1000MHz and the significant emissions were recorded.
Test distance between device under test and receiving antenna was 3-meter.

Sample of calculation:

Final value (dBuv/m) = Antenna Factor (dB) + Cable Loss (dB) + Reading (dBuv/m)

Tested By:



C.C.Wu

Checked By:



K.J.Hsu – EMC Engineer
NVLAP Signatory

