



FCC 47 CFR PART 15 SUBPART B

TEST REPORT

For

Applicant: TouchSquid Technology Inc.

**Address: #1118-1124 Lonsdale Avenue, North Vancouver, BC V7M 3H6,
Canada**

Product Name: 7"TouchSquid Tablet

Model Number: TS-781

Brand Name: TouchSquid

FCC ID: A38TS781

Report No.: MOST111102F1

Date of Issue: December. 15, 2011

Issued by: Most Technology Service Co., Ltd.

**Address: No.5, Langshan 2nd Rd., North Hi-Tech Industrial park, Nanshan,
Shenzhen, Guangdong, China**

Tel: 86-755-8617 0306

Fax: 86-755-8617 0310

The report consists 50 pages in total. It may be duplicated completely for legal use with the approval of the applicant. It should not be reproduced except in full, without the written approval of our laboratory. The client should not use it to claim product endorsement by MOST. The test results in the report only apply to the tested sample. The test report shall be invalid without all the signatures of testing engineers, reviewer and approver.

TABLE OF CONTENTS

| | |
|---|-----------|
| 1. VERIFICATION OF CONFORMITY..... | 3 |
| 2. GENERAL INFORMATION..... | 4 |
| 2.1 PRODUCT INFORMATION..... | 4 |
| 2.2 OBJECTIVE..... | 4 |
| 2.3 TEST STANDARDS AND RESULTS..... | 4 |
| 2.4 ENVIRONMENTAL CONDITIONS..... | 5 |
| 2.5 MEASUREMENT UNCERTAINTY..... | 5 |
| 3. TEST METHODOLOGY..... | 6 |
| 3.1 TEST FACILITY..... | 6 |
| 3.2 GENERAL TEST PROCEDURES..... | 6 |
| 3.3 FCC PART 15.205 RESTRICTED BANDS OF OPERATIONS..... | 7 |
| 4 SETUP OF EQUIPMENT UNDER TEST..... | 8 |
| 4.1 SETUP CONFIGURATION OF EUT..... | 8 |
| 4.2 SUPPORT EQUIPMENT..... | 8 |
| 4.3 TEST EQUIPMENT LIST..... | 9 |
| 5. 47 CFR PART 15B REQUIREMENTS..... | 10 |
| 5.1 GENERAL INFORMATION..... | 10 |
| 6. LINE CONDUCTED EMISSION TEST..... | 11 |
| 6.1. LIMITS OF LINE CONDUCTED EMISSION TEST..... | 11 |
| 6.2. BLOCK DIAGRAM OF TEST SETUP..... | 11 |
| 6.3. PRELIMINARY PROCEDURE OF LINE CONDUCTED EMISSION TEST..... | 12 |
| 6.4. FINAL PROCEDURE OF LINE CONDUCTED EMISSION TEST..... | 12 |
| 6.5. TEST RESULT OF LINE CONDUCTED EMISSION TEST..... | 13 |
| 7. RADIATED EMISSION TEST..... | 23 |
| 7.1. LIMITS OF RADIATED DISTURBANCES AT 3M DISTANCES FOR CLASS B..... | 23 |
| 7.2 TEST DESCRIPTION..... | 23 |
| 7.3 TEST RESULT..... | 25 |
| APPENDIX 1..... | 37 |
| PHOTOGRAPHS OF TEST SETUP..... | 37 |
| APPENDIX 2..... | 40 |
| PHOTOGRAPHS OF EUT..... | 40 |

1. VERIFICATION OF CONFORMITY

Equipment Under Test: 7" TouchSquid Tablet

Model Number: TS-781

Brand Name: TouchSquid

FCC ID: A38TS781

Applicant: TouchSquid Technology Inc.
#1118-1124 Lonsdale Avenue, North Vancouver, BC V7M 3H6, Canada
SKYTEX TECHNOLOGY CO., LTD

Manufacturer: Room 1615-1616, Dong Ming Building, Min Kang Road, Bao'An District,
Shenzhen, China

Technical Standards: FCC Part 15 B

File Number: MOST111102F1

Date of test: November. 12 - December. 11, 2011

Deviation: None

Condition of Test Sample: Normal

The above equipment was tested by MOST for compliance with the requirements set forth in FCC Part 15 and the Technical Standards mentioned above. This said equipment in the configuration described in this report shows the maximum emission levels emanating from equipment and the level of the immunity endurance of the equipment are within the compliance requirements.

The test results of this report relate only to the tested sample identified in this report.

Tested by (+ signature):



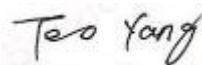
Zhang Ling December. 15, 2011

Review by (+ signature):



July Wen December. 15, 2011

Approved by (+ signature):



Terry Yang December. 15, 2011

2. GENERAL INFORMATION

2.1 PRODUCT INFORMATION

| | |
|--------------------------------|---|
| Equipment Under Test: | 7" TouchSquid Tablet |
| Brand Name: | TouchSquid |
| Model Name: | TS-781 |
| Series Number: | N/A |
| Difference description: | N/A |
| EUT Rating Voltage: | DC: 3.7V by Li-ion Battery; DC: 5V by AC Adapter(100V-240V 50/60Hz); |
| Voltage During Test: | 120VAC 60Hz |

NOTE:

1. Please refer to Appendix 2 for the photographs of the EUT. For a more detailed features description about the EUT, please refer to User's Manual.

2.2 OBJECTIVE

Perform FCC Part 15 Subpart B tests for FCC Marking.

2.3 TEST STANDARDS AND RESULTS

Test items and the results are as bellow:

| EMISSION | | | |
|------------------------------|-----------|--------|--------------------|
| Standard | Item | Result | Remarks |
| FCC 47 CFR Part 15 Subpart B | Conducted | PASS | Meet Class B limit |
| | Radiated | PASS | Meet Class B limit |

- Note:
1. The test result judgment is decided by the limit of measurement standard
 2. The information of measurement uncertainty is available upon the customer's request.

2.4 ENVIRONMENTAL CONDITIONS

During the measurement the environmental conditions were within the listed ranges:

- Temperature: 15-35°C
- Humidity: 30-60 %
- Atmospheric pressure: 86-106 kPa

2.5 MEASUREMENT UNCERTAINTY

The uncertainty is calculated using the methods suggested in the “Guide to the Expression of Uncertainty in Measurement” (GUM) published by ISO.

- Uncertainty of Conducted Emission, $U_c = \pm 1.8\text{dB}$
- Uncertainty of Radiated Emission, $U_c = \pm 3.2\text{dB}$

3. TEST METHODOLOGY

3.1 TEST FACILITY

| | |
|-----------------------|--|
| Test Site: | Most Technology Service Co., Ltd. |
| Location: | No.5, Langshan 2nd Rd, North Hi-Tech Industrial park, Nanshan, Shenzhen, Guangdong, China |
| Description: | <p>There is one 3m semi-anechoic an area test sites and two line conducted labs for final test. The Open Area Test Sites and the Line Conducted labs are constructed and calibrated to meet the FCC requirements in documents ANSI C63.4:2009 and CISPR 16 requirements. The FCC Registration Number is 490827.</p> <p>The CNAS Registration Number is CNAS L3573.</p> |
| Site Filing: | <p>The site description is on file with the Federal Communications Commission, 7435 Oakland Mills Road, Columbia, MD 21046.</p> |
| Instrument Tolerance: | All measuring equipment is in accord with ANSI C63.4:2009 and CISPR 16 requirements that meet industry regulatory agency and accreditation agency requirement. |
| Ground Plane: | Two conductive reference ground planes were used during the Line Conducted Emission, one in vertical and the other in horizontal. The dimensions of these ground planes are as below. The vertical ground plane was placed distancing 40 cm to the rear of the wooden test table on where the EUT and the support equipment were placed during test. The horizontal ground plane projected 50 cm beyond the footprint of the EUT system and distanced 80 cm to the wooden test table. For Radiated Emission Test, one horizontal conductive ground plane extended at least 1m beyond the periphery of the EUT and the largest measuring antenna, and covered the entire area between the EUT and the antenna. It has no holes or gaps having longitudinal dimensions larger than one-tenth of a wavelength at the highest frequency of measurement up to 1GHz. |

3.2 GENERAL TEST PROCEDURES

Conducted Emissions

The EUT is placed on the turntable, which is 0.8 m above ground plane. According to the requirements in Section 13.1.4.1 of ANSI C63.4:2009, Conducted emissions from the EUT measured in the frequency range between 0.15 MHz and 30MHz using CISPR Quasi-peak and average detector modes.

Radiated Emissions

The EUT is placed on a turn table, which is 0.8 m above ground plane. The turntable shall rotate 360 degrees to determine the position of maximum emission level. EUT is set 3m away from the receiving antenna, which varied from 1m to 4m to find out the highest emission. And also, each emission was to be maximized by changing the polarization of receiving antenna both horizontal and vertical. In order to find out the maximum emissions, exploratory radiated emission measurements were made according to the requirements in Section 13.1.4.1 of ANSI C63.4:2009.

3.3 FCC PART 15.205 RESTRICTED BANDS OF OPERATIONS

- (a) Except as shown in paragraph (d) of this section, only spurious emissions are permitted in any of the frequency bands listed below:

| MHz | MHz | MHz | GHz |
|----------------------------|-----------------------|-----------------|------------------|
| 0.090 - 0.110 | 16.42 - 16.423 | 399.9 - 410 | 4.5 - 5.15 |
| ¹ 0.495 - 0.505 | 16.69475 - 16.69525 | 608 - 614 | 5.35 - 5.46 |
| 2.1735 - 2.1905 | 16.80425 - 16.80475 | 960 - 1240 | 7.25 - 7.75 |
| 4.125 - 4.128 | 25.5 - 25.67 | 1300 - 1427 | 8.025 - 8.5 |
| 4.17725 - 4.17775 | 37.5 - 38.25 | 1435 - 1626.5 | 9.0 - 9.2 |
| 4.20725 - 4.20775 | 73 - 74.6 | 1645.5 - 1646.5 | 9.3 - 9.5 |
| 6.215 - 6.218 | 74.8 - 75.2 | 1660 - 1710 | 10.6 - 12.7 |
| 6.26775 - 6.26825 | 108 - 121.94 | 1718.8 - 1722.2 | 13.25 - 13.4 |
| 6.31175 - 6.31225 | 123 - 138 | 2200 - 2300 | 14.47 - 14.5 |
| 8.291 - 8.294 | 149.9 - 150.05 | 2310 - 2390 | 15.35 - 16.2 |
| 8.362 - 8.366 | 156.52475 - 156.52525 | 2483.5 - 2500 | 17.7 - 21.4 |
| 8.37625 - 8.38675 | 156.7 - 156.9 | 2655 - 2900 | 22.01 - 23.12 |
| 8.41425 - 8.41475 | 162.0125 - 167.17 | 3260 - 3267 | 23.6 - 24.0 |
| 12.29 - 12.293 | 167.72 - 173.2 | 3332 - 3339 | 31.2 - 31.8 |
| 12.51975 - 12.52025 | 240 - 285 | 3345.8 - 3358 | 36.43 - 36.5 |
| 12.57675 - 12.57725 | 322 - 335.4 | 3600 - 4400 | (²) |
| 13.36 - 13.41 | | | |

¹ Until February 1, 1999, this restricted band shall be 0.490-0.510 MHz.

² Above 38.6

- (b) Except as provided in paragraphs (d) and (e), the field strength of emissions appearing within these frequency bands shall not exceed the limits shown in Section 15.209. At frequencies equal to or less than 1000 MHz, compliance with the limits in Section 15.209 shall be demonstrated using measurement instrumentation employing a CISPR quasi-peak detector. Above 1000 MHz, compliance with the emission limits in Section 15.209 shall be demonstrated based on the average value of the measured emissions. The provisions in Section 15.35 apply to these measurements.

4 SETUP OF EQUIPMENT UNDER TEST

4.1 SETUP CONFIGURATION OF EUT

See test photographs attached in Appendix 1 for the actual connections between EUT and support equipment.

4.2 SUPPORT EQUIPMENT

| Device Type | Manufacturer | Model Name | Serial No. | Data Cable | Power Cable |
|---------------|--------------|---------------------|-------------------|---------------------|----------------------|
| PC | DELL | 780MT | 43ND8A00DC2 | --- | 1.2M Un-shielding |
| MONITOR | Philips | 220EW8FB/93 | CJ2A0727038455 | 1.6M Un-Shielded | 1.8M Un-Shielded |
| Keyboard | Unis | WN10 | WN10200807005590 | 1.6M Un-Shielded | |
| Mouse | Lenovo | M-UAE96 | E-C011-05-3735(B) | 1.6M Un-Shielded | |
| Hard-disk | HITACHI | HTS541680J9S A00 | 0A28842DA15870P73 | --- | |
| Micro SD CARD | Kingston | 1G | 0907T139090 | N/A | |

Remark:

All the equipment/cables were placed in the worst-case [-configuration to maximize the emission during the test.

Grounding was established in accordance with the manufacturer's requirements and conditions for the intended use.

4. 3 TEST EQUIPMENT LIST

Instrumentation: The following list contains equipment used at MOST for testing. The equipment conforms to the CISPR 16-1 / ANSI C63.2 Specifications for Electromagnetic Interference and Field Strength Instrumentation from 10 kHz to 1.0 GHz or above.

| No. | Equipment | Manufacturer | Model No. | S/N | Calibration due date |
|-----|--------------------------------------|-------------------|----------------|-------------|----------------------|
| 1 | Test Receiver | Rohde & Schwarz | ESCI | 100492 | 2012/03/14 |
| 2 | L.I.S.N. | Rohde & Schwarz | ENV216 | 100093 | 2012/03/14 |
| 3 | Coaxial Switch | Anritsu Corp | MP59B | 6200283933 | 2012/03/14 |
| 4 | Terminator | Hubersuhner | 50Ω | No.1 | 2012/03/14 |
| 5 | RF Cable | SchwarzBeck | N/A | No.1 | 2012/03/14 |
| 6 | Test Receiver | Rohde & Schwarz | ESPI | 101202 | 2012/03/14 |
| 7 | Bilog Antenna | Sunol | JB3 | A121206 | 2012/03/14 |
| 8 | Test Antenna - Horn | Schwarzbeck | BBHA 9120C | -- | 2012/03/14 |
| 9 | Test Antenna - Bi-Log | Schwarzbeck | VULB 9163 | -- | 2012/03/14 |
| 10 | Cable | Resenberger | N/A | NO.1 | 2012/03/14 |
| 11 | Cable | SchwarzBeck | N/A | NO.2 | 2012/03/14 |
| 12 | Cable | SchwarzBeck | N/A | NO.3 | 2012/03/14 |
| 13 | DC Power Filter | DuoJi | DL2×30B | N/A | 2012/03/14 |
| 14 | Single Phase Power Line Filter | DuoJi | FNF 202B30 | N/A | 2012/03/14 |
| 15 | 3 Phase Power Line Filter | DuoJi | FNF 402B30 | N/A | 2012/03/14 |
| 16 | Test Receiver | Rohde & Schwarz | ESCI | 100492 | 2012/03/14 |
| 17 | Absorbing Clamp | Luthi | MDS21 | 3635 | 2012/03/14 |
| 18 | Coaxial Switch | Anritsu Corp | MP59B | 6200283933 | 2012/03/14 |
| 19 | AC Power Source | Kikusui | AC40MA | LM003232 | 2012/03/14 |
| 20 | Test Analyzer | Kikusui | KHA1000 | LM003720 | 2012/03/14 |
| 21 | Line Impedence Network | Kikusui | LIN40MA-PCR-L | LM002352 | 2012/03/14 |
| 22 | ESD Tester | Kikusui | KES4021 | LM003537 | 2012/03/14 |
| 23 | EMC PRO System | EM Test | UCS-500-M4 | V0648102026 | 2012/03/14 |
| 24 | Signal Generator | IFR | 2032 | 203002/100 | 2012/03/14 |
| 25 | Amplifier | A&R | 150W1000 | 301584 | 2012/03/14 |
| 26 | CDN | FCC | FCC-801-M2-25 | 47 | 2012/03/14 |
| 27 | CDN | FCC | FCC-801-M3-25 | 107 | 2012/03/14 |
| 28 | EM Injection Clamp | FCC | F-203I-23mm | 403 | 2012/03/14 |
| 29 | RF Cable | MIYAZAKI | N/A | No.1/No.2 | 2012/03/14 |
| 30 | Universal Radio Communication Tester | ROHDE&SCHWARZ | CMU200 | 0304789 | 2012/03/14 |
| 31 | Telecommunication Antenna | European Antennas | PSA 75301R/170 | 0304213 | 2012/03/14 |

NOTE: Equipments listed above have been calibrated and are in the period of validation.

5. 47 CFR PART 15B REQUIREMENTS

5.1 GENERAL INFORMATION

EUT Test Procedure:

1. Put EUT on the test table.
2. Power on the EUT.
3. Make sure the EUT operates normally during the test.

Mode 1: Standby Mode

During the measurement, and the EUT was in charging Mode.

Mode 2: Full load Mode

During the measurement, the lithium battery was installed, and the system of EUT was running continuously.

Mode 3: USB Mode

During the measurement, the EUT was connected with the notebook and made the data transmission function continuously.

Mode 4: Camera Mode

During the measurement, the lithium battery was installed, and the MS was playing the camera function continuously.

Mode 5: Bluetooth Mode

During the measurement, the lithium battery was installed. and the MS was playing the bluetooth function continuously.

Mode 6: WiFi Mode

During the measurement, the lithium battery was installed. A communication link was established between the EUT and a System Simulator.

6. LINE CONDUCTED EMISSION TEST

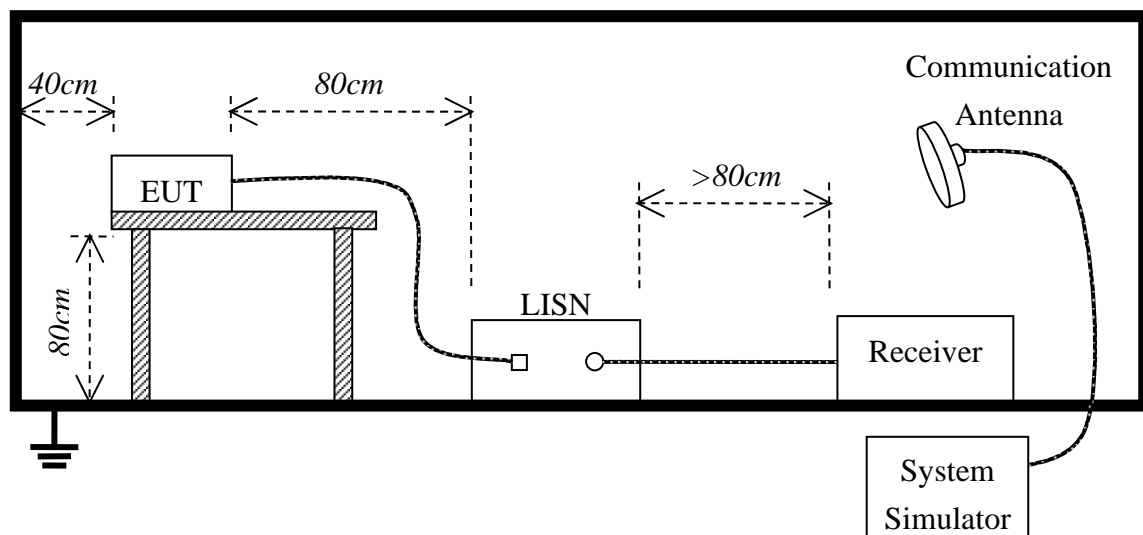
6.1. LIMITS OF LINE CONDUCTED EMISSION TEST

| Frequency | Maximum RF Line Voltage | |
|---------------|-------------------------|----------------|
| | Q.P.(dBuV) | Average(dBuV) |
| 150kHz-500kHz | 66-56 | 56-46 |
| 500kHz-5MHz | 56 | 46 |
| 5MHz-30MHz | 60 | 50 |

****Note:** 1. the lower limit shall apply at the transition frequency.

2. The limit decreases linearly with the logarithm of the frequency in the range 0.15 MHz to 0.50 MHz

6.2. BLOCK DIAGRAM OF TEST SETUP



6.3. PRELIMINARY PROCEDURE OF LINE CONDUCTED EMISSION TEST

- 1) The equipment was set up as per the test configuration to simulate typical actual usage per the user's manual. When the EUT is a tabletop system, a wooden table with a height of 0.8 meters is used and is placed on the ground plane as per FCC Part 15 (see Test Facility for the dimensions of the ground plane used). When the EUT is floor-standing equipment, it is placed on the ground plane which has a 3-12 mm non-conductive covering to insulate the EUT from the ground plane.
- 2) Support equipment, if needed, was placed as per FCC Part 15.
- 3) All I/O cables were positioned to simulate typical actual usage as per FCC Part 15.
- 4) The EUT received DC 5V by AC/DC adapter or DC 5V by USB port of the notebook which through a Line Impedance Stabilization Network (LISN) which supplied power source and was grounded to the ground plane.
- 5) All support equipments received power from a second LISN supplying power of AC 120V/60Hz, if any.
- 6) The EUT test program was started. Emissions were measured on each current carrying line of the EUT using a spectrum Analyzer / Receiver connected to the LISN powering the EUT. The LISN has two monitoring points: Line 1 (Hot Side) and Line 2 (Neutral Side). Two scans were taken: one with Line 1 connected to Analyzer / Receiver and Line 2 connected to a 50 ohm load; the second scan had Line 1 connected to a 50 ohm load and Line 2 connected to the Analyzer / Receiver.
- 7) Analyzer / Receiver scanned from 150 kHz to 30 MHz for emissions in each of the test modes.
- 8) During the above scans, the emissions were maximized by cable manipulation.
- 9) The following test mode(s) were scanned during the preliminary test:

| Preliminary Conducted Emission Test | | | | |
|-------------------------------------|------------|------------------|-----------------|-------------------------------------|
| Frequency Range Investigated | | 150KHz TO 30 MHz | | |
| Mode of operation | Date | Report No. | Data# | Worst Mode |
| Standby Mode | 2011-11-12 | MOST111102F1 | TS-781_0_(L, N) | <input type="checkbox"/> |
| Full Load Mode | 2011-11-12 | MOST111102F1 | TS-781_1_(L, N) | <input type="checkbox"/> |
| USB Mode | 2011-11-12 | MOST111102F1 | TS-781_2_(L, N) | <input type="checkbox"/> |
| Camera Mode | 2011-11-12 | MOST111102F1 | TS-781_3_(L, N) | <input checked="" type="checkbox"/> |
| Bluetooth Mode | 2011-11-12 | MOST111102F1 | TS-781_4_(L, N) | <input type="checkbox"/> |
| WIFI Mode | 2011-11-12 | MOST111102F1 | TS-781_5_(L, N) | <input type="checkbox"/> |

Then, the EUT configuration and cable configuration of the above highest emission level were recorded for reference of final testing.

6.4. FINAL PROCEDURE OF LINE CONDUCTED EMISSION TEST

EUT and support equipment was set up on the test bench as per step 9 of the preliminary test.

A scan was taken on both power lines, Line 1 and Line 2, recording at least the six highest emissions. Emission frequency and amplitude were recorded into a computer in which correction factors were used to calculate the emission level and compare reading to the applicable limit. If EUT emission level was less -20dB to the A.V. limit in Peak mode, then the emission signal was re-checked using Q.P and Average detector.

The test data of the worst case condition(s) was reported on the Summary Data page.

6.5. TEST RESULT OF LINE CONDUCTED EMISSION TEST



Address: No. 5, Langshan 2nd Rd., North Hi-Tech Industrial park
Guangdong, China
Tel: 0755-86170306 Fax: 0755-86170310

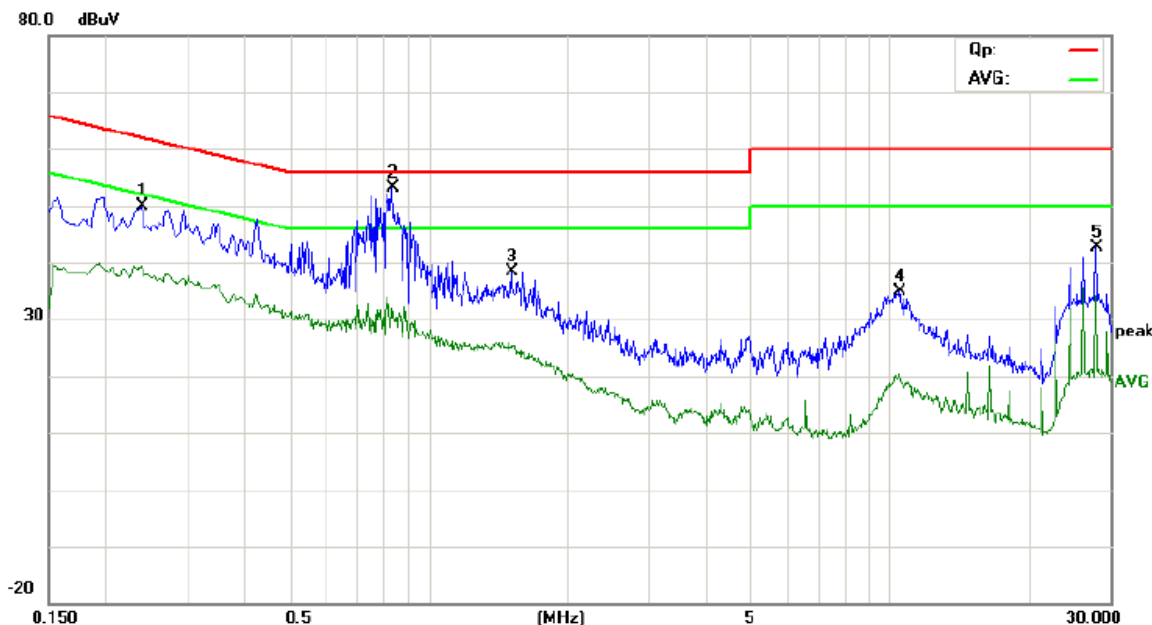
Conducted Emission Measurement

File: TS-781

Data: #12

Date: 11/11/12/

Time: 15/49/00



Site: site #1

Phase: L1

Temperature: 26

Limit: EN55022 Class B QP

Power: AC 230V/50Hz

Humidity: 60 %

EUT: 7" Touchscreen tablet

M/N: TS-781

Mode: USB Mode

Note:

| No. | Mk. | Freq. MHz | Reading Level dBuV | Correct Factor dB | Measure- ment dBuV | Limit dBuV | Over dB | Detector | Comment |
|-----|-----|--------------|--------------------------|-------------------------|--------------------------|---------------|------------|----------|---------|
| 1 | | 0.2380 | 38.11 | 11.75 | 49.86 | 62.17 | -12.31 | peak | |
| 2 | * | 0.8340 | 43.07 | 10.00 | 53.07 | 56.00 | -2.93 | peak | |
| 3 | | 1.5180 | 28.95 | 9.48 | 38.43 | 56.00 | -17.57 | peak | |
| 4 | | 10.4860 | 25.95 | 9.00 | 34.95 | 60.00 | -25.05 | peak | |
| 5 | | 27.9060 | 33.57 | 9.00 | 42.57 | 60.00 | -17.43 | peak | |

*: Maximum data x: Over limit !: over margin



Address: No. 5, Langshan 2nd Rd., North Hi-Tech Industrial park
Guangdong, China
Tel: 0755-86170306 Fax: 0755-86170310

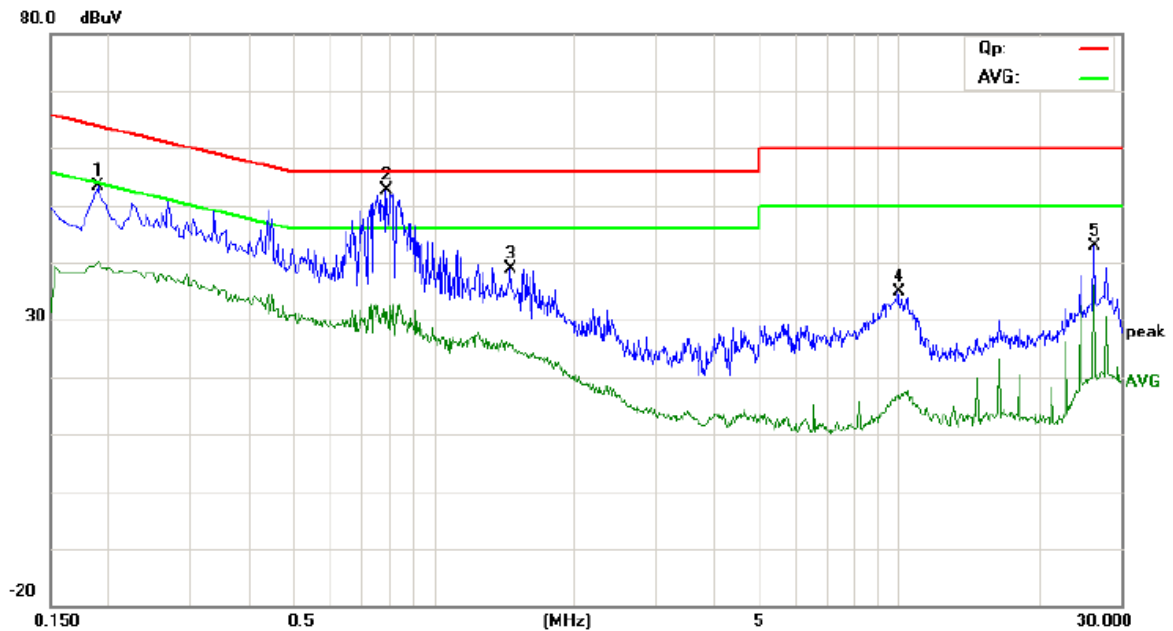
Conducted Emission Measurement

File: TS-781

Data: #11

Date: 11/11/12/

Time: 15/47/07



Site site #1

Phase: *N*

Temperature: 26

Limit: EN55022 Class B QP

Power: AC 230V/50Hz

Humidity: 60 %

EUT: 7" Touchscreen tablet

M/N: TS-781

Mode: USB Mode

Note:

| No. | Mk. | Freq. MHz | Reading Level dBuV | Correct Factor dB | Measure- ment dBuV | Limit dBuV | Over dB | Detector | Comment |
|-----|-----|--------------|--------------------------|-------------------------|--------------------------|---------------|------------|----------|---------|
| 1 | | 0.1900 | 41.90 | 11.40 | 53.30 | 64.04 | -10.74 | peak | |
| 2 | * | 0.7900 | 42.57 | 10.00 | 52.57 | 56.00 | -3.43 | peak | |
| 3 | | 1.4620 | 29.35 | 9.54 | 38.89 | 56.00 | -17.11 | peak | |
| 4 | | 9.9580 | 25.81 | 9.03 | 34.84 | 60.00 | -25.16 | peak | |
| 5 | | 26.2580 | 33.96 | 9.00 | 42.96 | 60.00 | -17.04 | peak | |

*:Maximum data x:Over limit !:over margin



Address: No.5, Langshan 2nd Rd., North Hi-Tech Industrial park
Guangdong, China
Tel: 0755-86170306 Fax: 0755-86170310

Conducted Emission Measurement

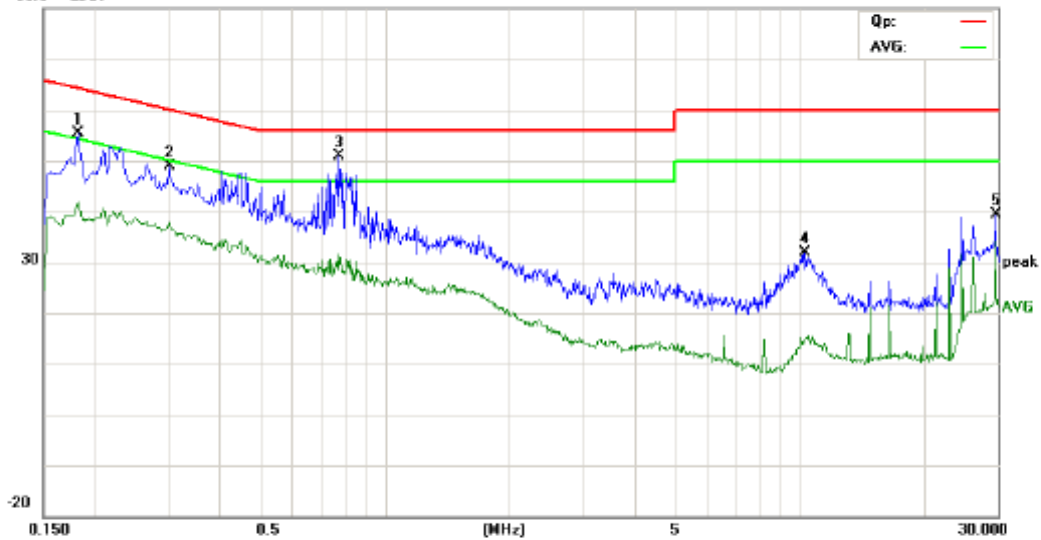
File: TS-781

Data: #5

Date: 11/11/12/

Time: 15/33/51

80.0 dBuV



Site site #1

Phase: **L1**

Temperature: 26

Limit: FCC Part15 B Class B QP

Power: AC 120V/60Hz

Humidity: 60 %

EUT: 7" Touchsquad tablet

MN: TS-781

Mode: full load

Note:

| No. | Mk. | Freq. MHz | Reading Level dBuV | Correct Factor dB | Measure- ment dBuV | Limit dBuV | Over dB | Detector | Comment |
|-----|-----|--------------|--------------------------|-------------------------|--------------------------|---------------|------------|----------|---------|
| 1 | | 0.1820 | 44.40 | 10.92 | 55.32 | 64.39 | -9.07 | peak | |
| 2 | | 0.3020 | 37.46 | 11.32 | 48.78 | 60.19 | -11.41 | peak | |
| 3 | * | 0.7740 | 40.88 | 10.00 | 50.88 | 56.00 | -5.12 | peak | |
| 4 | | 10.2540 | 22.89 | 9.00 | 31.89 | 60.00 | -28.11 | peak | |
| 5 | | 29.5460 | 30.38 | 9.00 | 39.38 | 60.00 | -20.62 | peak | |

*:Maximum data x:Over limit !:over margin



Address: No. 5, Langshan 2nd Rd., North Hi-Tech Industrial park
Guangdong, China
Tel: 0755-86170306 Fax: 0755-86170310

Conducted Emission Measurement



Site site #1

Phase: **N**

Temperature: 26

Limit: FCC Part15 B Class B QP

Power: AC 120V/60Hz

Humidity: 60 %

EUT: 7" Touchsquad tablet

MN: TS-781

Mode: full load

Note:

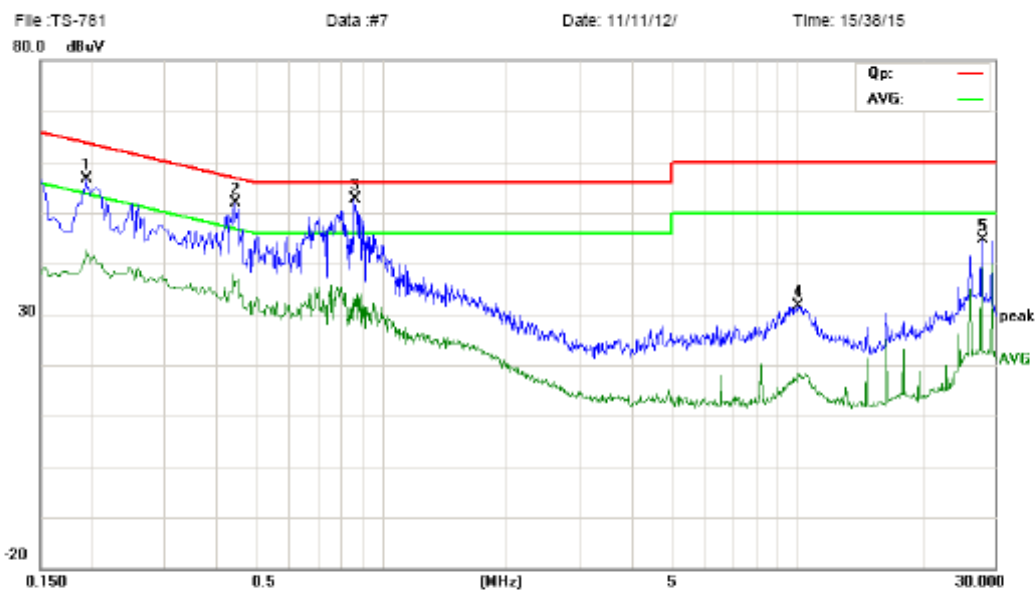
| No. | Mk. | Freq. | Reading Level | Correct Factor | Measurement | Limit | Over | Detector | Comment |
|-----|-----|---------|---------------|----------------|-------------|-------|--------|----------|---------|
| | | MHz | dBuV | dB | dBuV | dBuV | dB | | |
| 1 | | 0.1820 | 44.63 | 10.92 | 55.55 | 64.39 | -8.84 | peak | |
| 2 | * | 0.4500 | 40.76 | 10.33 | 51.09 | 56.88 | -5.79 | peak | |
| 3 | | 0.7660 | 39.96 | 10.00 | 49.96 | 56.00 | -6.04 | peak | |
| 4 | | 10.0620 | 22.25 | 9.00 | 31.25 | 60.00 | -28.75 | peak | |
| 5 | | 26.2660 | 31.58 | 9.00 | 40.58 | 60.00 | -19.42 | peak | |

*:Maximum data x:Over limit !:over margin



Address: No.5, Langshan 2nd Rd., North Hi-Tech Industrial park
Guangdong, China
Tel: 0755-86170306 Fax: 0755-86170310

Conducted Emission Measurement



Site site #1

Phase: **N**

Temperature: 26

Limit: FCC Part15 B Class B QP

Power: AC 120V/60Hz

Humidity: 60 %

EUT: 7" Touchsquad tablet

MN: TS-781

Mode: camera

Note:

| No. | Mk. | Freq. MHz | Reading Level dBuV | Correct Factor dB | Measure- ment dBuV | Limit dBuV | Over dB | Detector | Comment |
|-----|-----|--------------|--------------------------|-------------------------|--------------------------|---------------|------------|----------|---------|
| 1 | | 0.1940 | 45.00 | 11.64 | 56.64 | 63.86 | -7.22 | peak | |
| 2 | | 0.4420 | 41.49 | 10.39 | 51.88 | 57.02 | -5.14 | peak | |
| 3 | * | 0.8580 | 42.55 | 10.00 | 52.55 | 56.00 | -3.45 | peak | |
| 4 | | 10.0380 | 22.75 | 9.00 | 31.75 | 60.00 | -28.25 | peak | |
| 5 | | 27.8900 | 35.73 | 9.00 | 44.73 | 60.00 | -15.27 | peak | |

*:Maximum data x:Over limit !:over margin



Address: No. 5, Langshan 2nd Rd., North Hi-Tech Industrial park
Guangdong, China
Tel: 0755-86170306 Fax: 0755-86170310

Conducted Emission Measurement



Site site #1

Phase: **L1**

Temperature: 26

Limit: FCC Part15 B Class B QP

Power: AC 120V/60Hz

Humidity: 60 %

EUT: 7" Touchsquad tablet

MN: TS-781

Mode: camera

Note:

| No. | Mk. | Freq. | Reading Level | Correct Factor | Measurement | Limit | Over | Detector | Comment |
|-----|-----|---------|---------------|----------------|-------------|-------|--------|----------|---------|
| | | MHz | dBuV | dB | dBuV | dBuV | dB | | |
| 1 | | 0.1620 | 47.49 | 9.72 | 57.21 | 65.36 | -8.15 | peak | |
| 2 | | 0.4340 | 39.67 | 10.44 | 50.11 | 57.18 | -7.07 | peak | |
| 3 | * | 0.7980 | 42.17 | 10.00 | 52.17 | 56.00 | -3.83 | peak | |
| 4 | | 10.4620 | 23.26 | 9.00 | 32.26 | 60.00 | -27.74 | peak | |
| 5 | | 29.5300 | 37.51 | 9.00 | 46.51 | 60.00 | -13.49 | peak | |

*:Maximum data x:Over limit !:over margin



Address: No.5, Langshan 2nd Rd., North Hi-Tech Industrial park
Guangdong, China
Tel: 0755-86170306 Fax: 0755-86170310

Conducted Emission Measurement

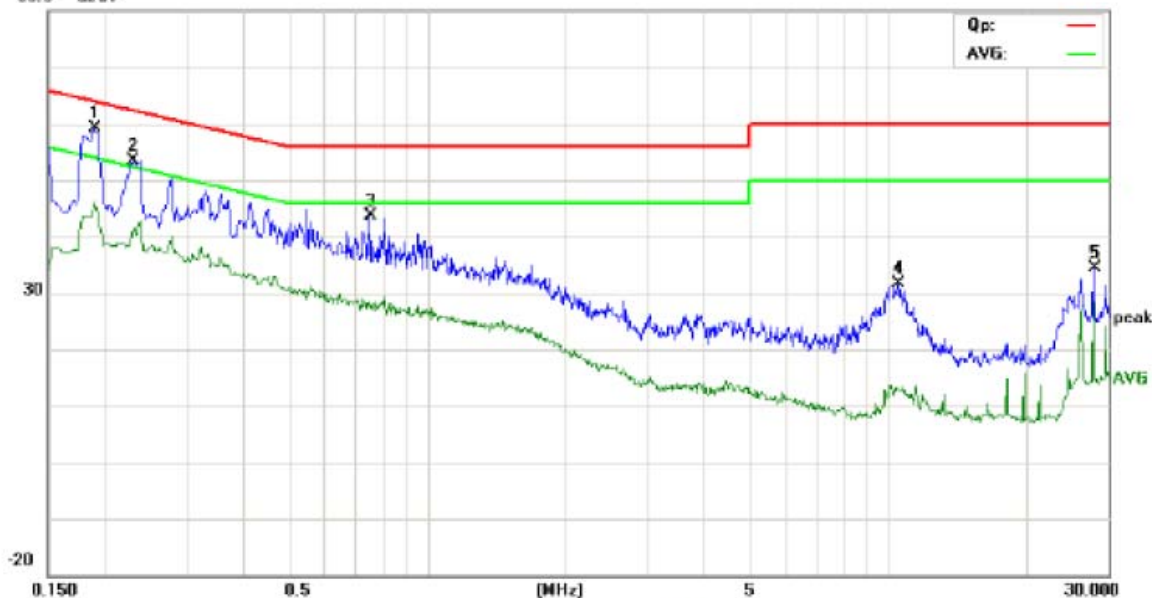
File: TS-781

Data: #1

Date: 11/11/12/

Time: 15/21/42

80.0 dBuV



Site site #1

Phase: L1

Temperature: 26

Limit: FCC Part15 B Class B QP

Power: AC 120V/50Hz

Humidity: 60 %

EUT: 7" Touchsquad tablet

M/N: TS-781

Mode: WIFI

Note:

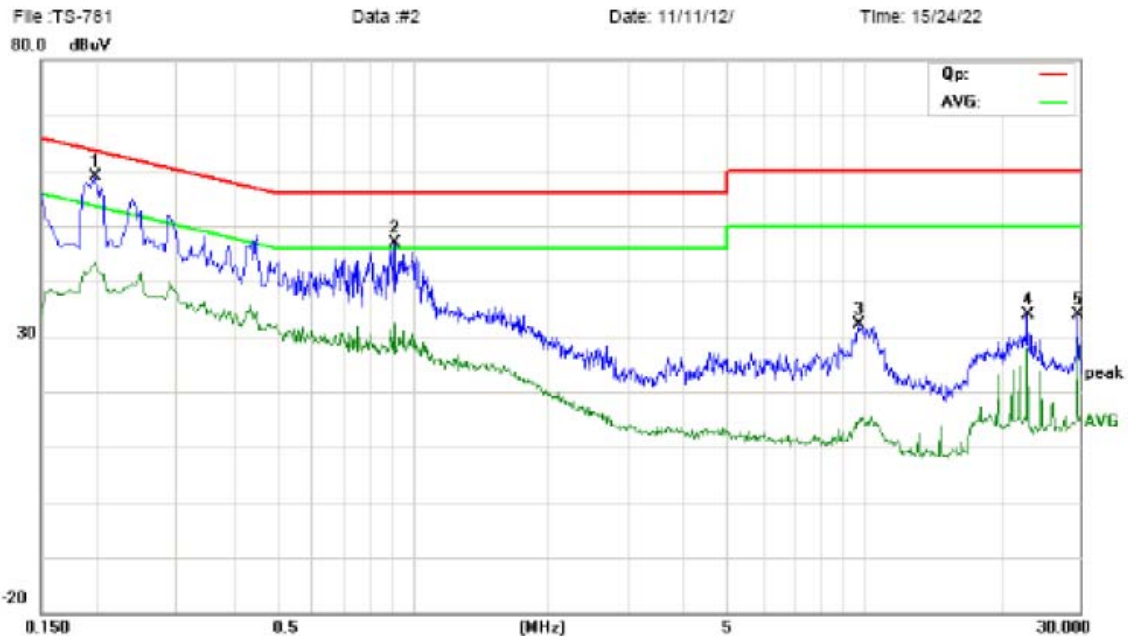
| No. | Mk. | Freq. MHz | Reading Level dBuV | Correct Factor dB | Measure- ment dBuV | Limit dBuV | Over dB | Detector | Comment |
|-----|-----|--------------|--------------------------|-------------------------|--------------------------|---------------|------------|----------|---------|
| 1 | * | 0.1900 | 47.67 | 11.40 | 59.07 | 64.04 | -4.97 | peak | |
| 2 | | 0.2300 | 41.54 | 11.80 | 53.34 | 62.45 | -9.11 | peak | |
| 3 | | 0.7500 | 33.60 | 10.00 | 43.60 | 56.00 | -12.40 | peak | |
| 4 | | 10.4820 | 22.56 | 9.00 | 31.56 | 60.00 | -28.44 | peak | |
| 5 | | 27.9180 | 25.34 | 9.00 | 34.34 | 60.00 | -25.66 | peak | |

*:Maximum data x:Over limit !:over margin



Address: No.5, Langshan 2nd Rd., North Hi-Tech Industrial park
Guangdong, China
Tel: 0755-86170306 Fax: 0755-86170310

Conducted Emission Measurement



Site site #1

Phase: **N**

Temperature: 26

Limit: FCC Part15 B Class B QP

Power: AC 120V/60Hz

Humidity: 60 %

EUT: 7" Touchsquad tablet

M/N: TS-781

Mode: WIFI

Note:

| No. | Mk. | Freq. MHz | Reading Level dBuV | Correct Factor dB | Measure- ment dBuV | Limit dBuV | Over dB | Detector | Comment |
|-----|-----|--------------|--------------------------|-------------------------|--------------------------|---------------|------------|----------|---------|
| 1 | * | 0.1980 | 46.90 | 11.88 | 58.78 | 63.69 | -4.91 | peak | |
| 2 | | 0.9100 | 36.87 | 10.00 | 46.87 | 56.00 | -9.13 | peak | |
| 3 | | 9.6860 | 22.91 | 9.19 | 32.10 | 60.00 | -27.90 | peak | |
| 4 | | 22.9780 | 24.80 | 9.00 | 33.80 | 60.00 | -26.20 | peak | |
| 5 | | 29.5460 | 24.88 | 9.00 | 33.88 | 60.00 | -26.12 | peak | |

*:Maximum data x:Over limit !:over margin



Address: No.5, Langshan 2nd Rd., North Hi-Tech Industrial park
Guangdong, China
Tel: 0755-86170306 Fax: 0755-86170310

Conducted Emission Measurement

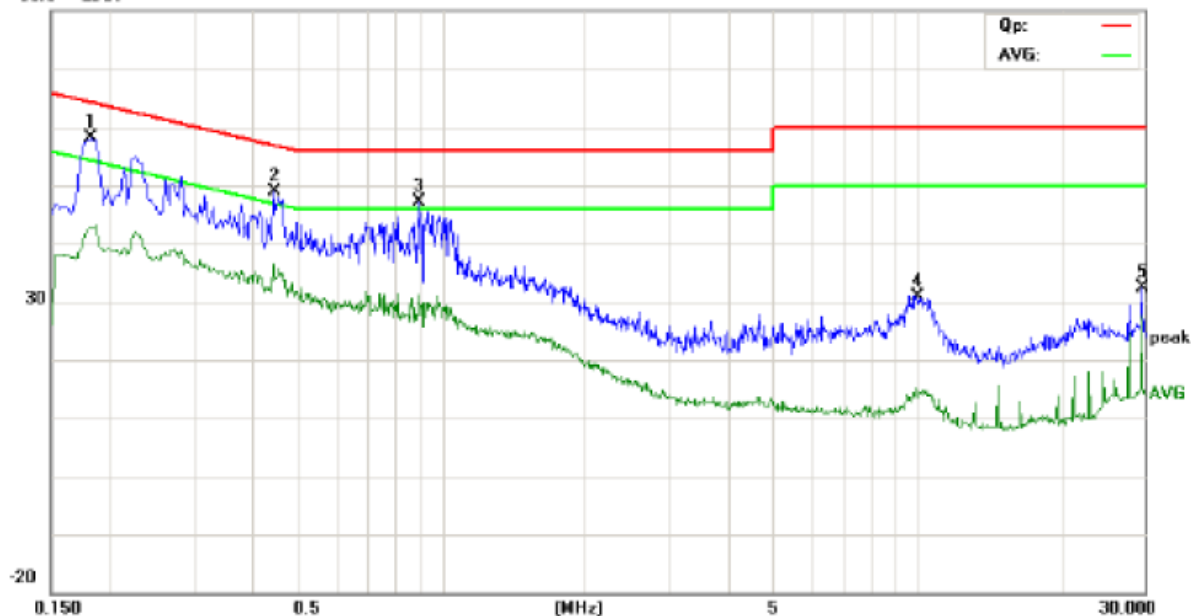
File: TS-781

Data: #3

Date: 11/11/12/

Time: 15/26/25

80.0 dBuV



Site: site #1

Phase: **N**

Temperature: 26

Limit: FCC Part15 B Class B QP

Power: AC 120V/60Hz

Humidity: 60 %

EUT: 7" Touchsquad tablet

M/N: TS-781

Mode: bluetooth

Note:

| No. | Mk. | Freq. | Reading Level | Correct Factor | Measurement | Limit | Over | | |
|-----|-----|---------|---------------|----------------|-------------|-------|--------|----------|---------|
| | | MHz | dBuV | dB | dBuV | dBuV | dB | Detector | Comment |
| 1 | * | 0.1820 | 47.13 | 10.92 | 58.05 | 64.39 | -6.34 | peak | |
| 2 | | 0.4420 | 38.46 | 10.39 | 48.85 | 57.02 | -8.17 | peak | |
| 3 | | 0.8940 | 37.15 | 10.00 | 47.15 | 56.00 | -8.85 | peak | |
| 4 | | 9.9380 | 21.95 | 9.04 | 30.99 | 60.00 | -29.01 | peak | |
| 5 | | 29.5540 | 23.40 | 9.00 | 32.40 | 60.00 | -27.60 | peak | |

*:Maximum data x:Over limit !:over margin



Address: No.5, Langshan 2nd Rd., North Hi-Tech Industrial park
Guangdong, China
Tel: 0755-86170306 Fax: 0755-86170310

Conducted Emission Measurement

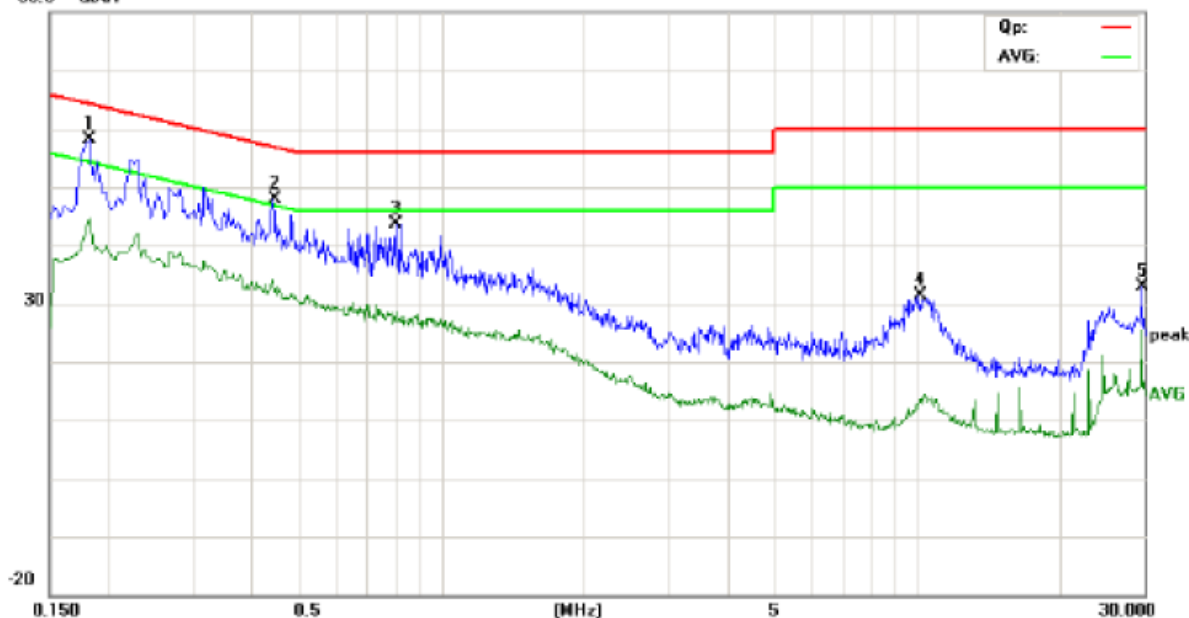
File: TS-781

Data: #4

Date: 11/11/12/

Time: 15/28/20

80.0 dBuV



Site: site #1

Phase: **L1**

Temperature: 26

Limit: FCC Part15 B Class B QP

Power: AC 120V/60Hz

Humidity: 60 %

EUT: 7" Touchsquad tablet

MN: TS-781

Mode: bluetooth

Note:

| No. | Mk. | Freq. | Reading Level | Correct Factor | Measurement | Limit | Over | Detector | Comment |
|-----|-----|---------|---------------|----------------|-------------|-------|--------|----------|---------|
| | | MHz | dBuV | dB | dBuV | dBuV | dB | | |
| 1 | * | 0.1820 | 47.13 | 10.92 | 58.05 | 64.39 | -6.34 | peak | |
| 2 | | 0.4460 | 37.45 | 10.36 | 47.81 | 56.95 | -9.14 | peak | |
| 3 | | 0.8020 | 33.74 | 10.00 | 43.74 | 56.00 | -12.26 | peak | |
| 4 | | 10.1060 | 22.42 | 9.00 | 31.42 | 60.00 | -28.58 | peak | |
| 5 | | 29.5500 | 23.94 | 9.00 | 32.94 | 60.00 | -27.06 | peak | |

*:Maximum data x:Over limit !:over margin

7. RADIATED EMISSION TEST

7.1. LIMITS OF RADIATED DISTURBANCES AT 3M DISTANCES FOR CLASS B

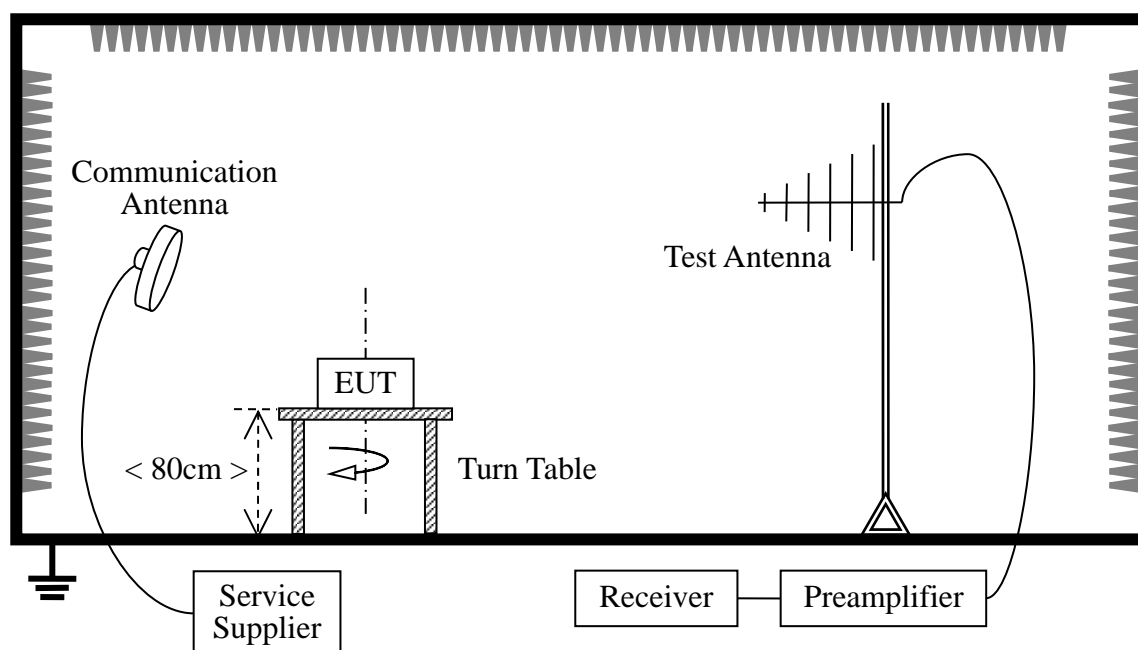
According to FCC section 15.209 (a), except as provided elsewhere in this subpart, the emissions from an intentional radiator shall not exceed the field strength levels specified in the following table:

| Frequency (MHz) | Field Strength ($\mu\text{V/m}$) | Measurement Distance (m) |
|-----------------|------------------------------------|--------------------------|
| 0.009 - 0.490 | $2400/F(\text{kHz})$ | 300 |
| 0.490 - 1.705 | $24000/F(\text{kHz})$ | 30 |
| 1.705 - 30.0 | 30 | 30 |
| 30 - 88 | 100 | 3 |
| 88 - 216 | 150 | 3 |
| 216 - 960 | 200 | 3 |
| Above 960 | 500 | 3 |

As shown in FCC section 15.35(b), for frequencies above 1000MHz, the field strength limits are based on average detector. When average radiated emission measurements are specified in this part, including emission measurements below 1000MHz, there also is a limit on the radio frequency emissions, as measured using instrumentation with a peak detector function, corresponding to 20dB above the maximum permitted average limit for the frequency being investigated unless a different peak emission limit is otherwise specified in the rules.

7.2 TEST DESCRIPTION

Test Setup:



The EUT received AC 120V/60Hz. The Module is located in a 3m Semi-Anechoic Chamber; the antenna factors, cable loss and so on of the site as factors are calculated to correct the reading. During the measurement, the EUT is activated and transmitting with the other WIFI device (Supply by the Applicant) during the test.

For the Test Antenna:

1. In the frequency range of 9 kHz to 30MHz, magnetic field is measured with Loop Test Antenna. The Test Antenna is positioned with its plane vertical at 1m distance from the EUT. The center of the Loop Test Antenna is 1m above the ground. During the measurement the Loop Test Antenna rotates about its vertical axis for maximum response at each azimuth about the EUT.
2. In the frequency range above 30MHz, Bi-Log Test Antenna (30MHz to 1GHz) and Horn Test Antenna (above 1GHz) are used. Test Antenna is 3m away from the EUT. Test Antenna height is varied from 1m to 4m above the ground to determine the maximum value of the field strength. The emission levels at both horizontal and vertical polarizations should be tested.

| Preliminary Radiated Emission Test | | | | |
|------------------------------------|------------|--------------|--------------------|-------------------------------------|
| Frequency Range Investigated | | | 30 MHz TO 1000 MHz | |
| Mode of operation | Date | Report No. | Data# | Worst Mode |
| Standby Mode | 2011-11-12 | MOST111102F1 | TS-781_0_(H, V) | <input type="checkbox"/> |
| Full Load Mode | 2011-11-12 | MOST111102F1 | TS-781_1_(H, V) | <input type="checkbox"/> |
| USB Mode | 2011-11-12 | MOST111102F1 | TS-781_2_(H, V) | <input type="checkbox"/> |
| Camera Mode | 2011-11-12 | MOST111102F1 | TS-781_3_(H, V) | <input checked="" type="checkbox"/> |
| Bluetooth Mode | 2011-11-12 | MOST111102F1 | TS-781_4_(H, V) | <input type="checkbox"/> |
| WIFI Mode | 2011-11-12 | MOST111102F1 | TS-781_5_(H, V) | <input type="checkbox"/> |

7.3 TEST RESULT**Form 9 KHz to 30MHz:**

| Freq. (MHz) | Ant. Pol H/V | Peak Reading (dBuV) | AV Reading (dBuV) | Ant. / CL CF (dB) | Actual Fs | | Peak Limit (dBuV/m) | AV Limit (dBuV/m) | AV Margin (dB) |
|----------------|-----------------|---------------------------|-------------------------|-------------------------|------------------|----------------|---------------------------|-------------------------|----------------------|
| | | | | | Peak (dBuV/m) | AV (dBuV/m) | | | |
| N/A | H | | | | | | | | >20 |
| | | | | | | | | | |
| | | | | | | | | | |
| | | | | | | | | | |
| N/A | V | | | | | | | | >20 |
| | | | | | | | | | |
| | | | | | | | | | |

-Note: No test data was detected in below 30MHz.



Address: No. 5, Langshan 2nd Rd., North Hi-Tech Industrial park
Guangdong, China
Tel: 0755-86170306 Fax: 0755-86170310

Radiated Emission Measurement

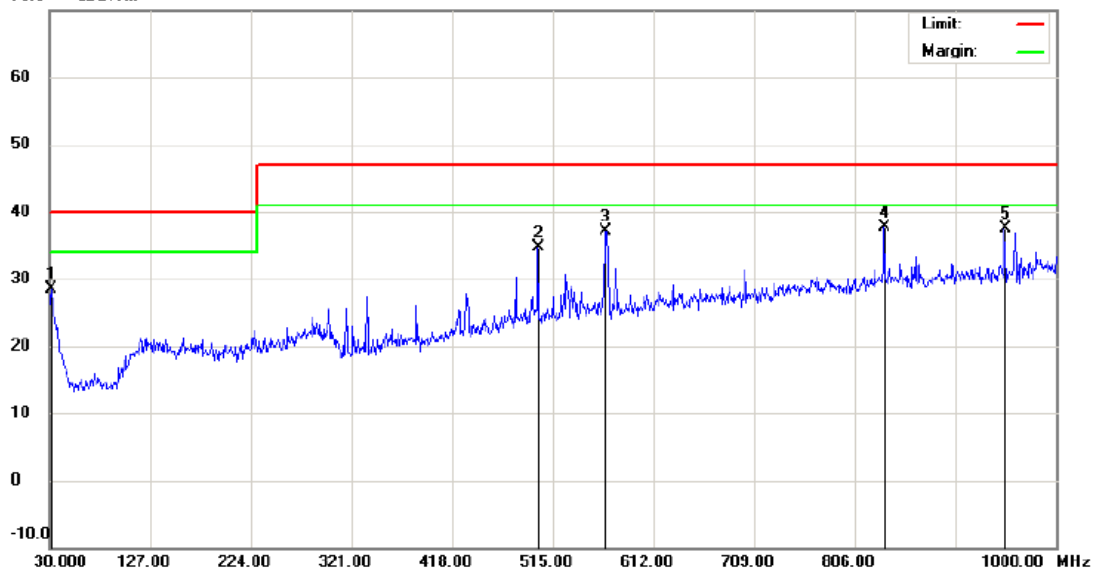
File: TS-781

Data: #25

Date: 2011-12-12

Time: 19:04:24

70.0 dBuV/m



Site: site #1

Polarization: **Horizontal**

Temperature: 26

Limit: EN 55022 Class B 3M Radiation

Power: DC 5V From PC

Humidity: 61 %

EUT: 7" Touchscreen tablet

Distance:

M/N: TS-781

Mode: USB

Note:

| No. | Mk. | Freq. | Reading Level | Correct Factor | Measurement | Limit | Over | Antenna Height | Table Degree | |
|-----|-----|----------|---------------|----------------|-------------|--------|--------|----------------|--------------|--------|
| | | MHz | dBuV | dB | dBuV/m | dBuV/m | dB | Detector | cm | degree |
| 1 | | 31.9400 | 5.16 | 23.31 | 28.47 | 40.00 | -11.53 | peak | | |
| 2 | | 500.4500 | 13.38 | 21.40 | 34.78 | 47.00 | -12.22 | peak | | |
| 3 | | 566.4099 | 14.38 | 22.79 | 37.17 | 47.00 | -9.83 | peak | | |
| 4 | * | 834.1300 | 10.65 | 27.08 | 37.73 | 47.00 | -9.27 | peak | | |
| 5 | | 950.5300 | 9.52 | 27.92 | 37.44 | 47.00 | -9.56 | peak | | |

*:Maximum data x:Over limit l:over margin



Address: No. 5, Langshan 2nd Rd., North Hi-Tech Industrial park
Guangdong, China
Tel: 0755-86170306 Fax: 0755-86170310

Radiated Emission Measurement

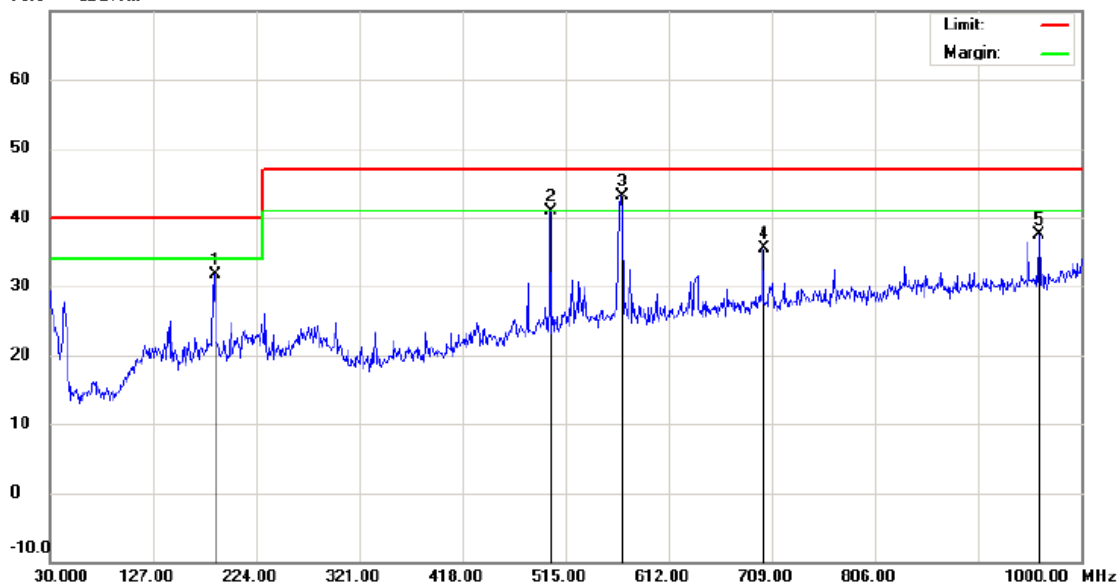
File: TS-781

Data: #26

Date: 2011-12-12

Time: 19:04:53

70.0 dBuV/m



Site site #1

Polarization: **Vertical**

Temperature: 26

Limit: EN 55022 Class B 3M Radiation

Power: DC 5V From PC

Humidity: 61 %

EUT: 7" Touchscreen tablet

Distance:

M/N: TS-781

Mode: USB

Note:

| No. | Mk. | Freq. | Reading Level | Correct Factor | Measure-ment | Limit | Over | Antenna Height | Table Degree | |
|-----|-----|----------|---------------|----------------|--------------|--------|--------|----------------|--------------|---------|
| | | MHz | dBuV | dB | dBuV/m | dBuV/m | dB | cm | degree | Comment |
| 1 | | 184.2300 | 15.02 | 16.62 | 31.64 | 40.00 | -8.36 | peak | | |
| 2 | | 500.4500 | 19.51 | 21.40 | 40.91 | 47.00 | -6.09 | peak | | |
| 3 | * | 567.3800 | 20.30 | 22.82 | 43.12 | 47.00 | -3.88 | peak | | |
| 4 | | 700.2700 | 10.74 | 24.70 | 35.44 | 47.00 | -11.56 | peak | | |
| 5 | | 960.2300 | 9.53 | 28.00 | 37.53 | 47.00 | -9.47 | peak | | |

*:Maximum data x:Over limit !:over margin



Address: No.5, Langshan 2nd Rd., North Hi-Tech Industrial park
Guangdong, China
Tel: 0755-86170306 Fax: 0755-86170310

Radiated Emission Measurement

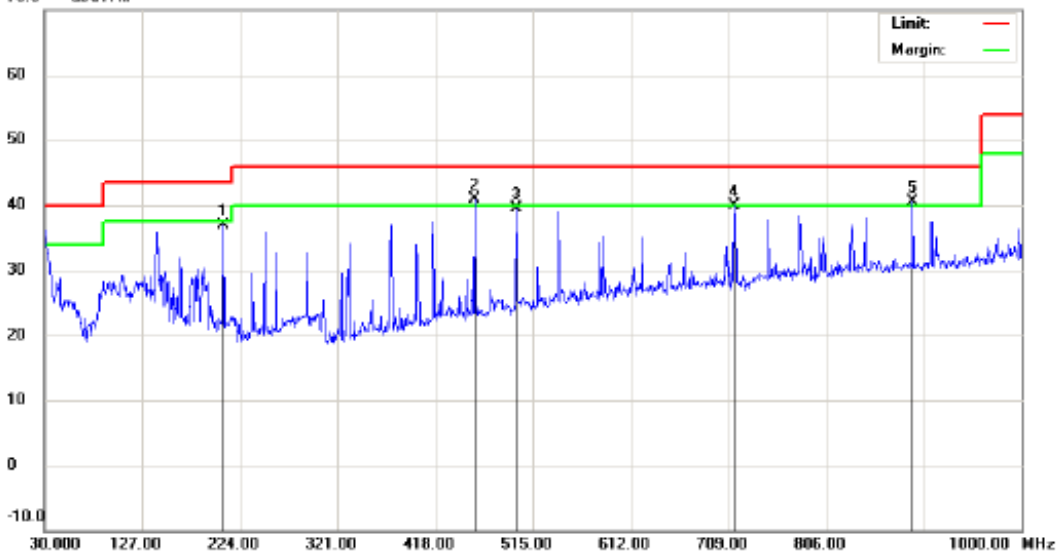
File: TS-781

Data: #9

Date: 2011-11-12

Time: 17:02:32

70.0 dBuV/m



Site: site #1

Polarization: Vertical

Temperature: 26

Limit: FCC Part15 B 3M Radiation

Power: AC 120V/60Hz

Humidity: 61 %

EUT: 7" Touchsquad tablet

Distance:

M/N: TS-781

Mode: CAMERA

Note:

| No. | Mk. | Freq. | Reading Level | Correct Factor | Measurement | Limit | Over | Antenna Height | Table Degree | |
|-----|-----|----------|---------------|----------------|-------------|--------|-------|----------------|--------------|---------|
| | | MHz | dBuV | dB | dBuV/m | dBuV/m | dB | cm | degree | Comment |
| 1 | | 207.5099 | 20.39 | 16.53 | 36.92 | 43.50 | -6.58 | peak | | |
| 2 | * | 456.8000 | 20.64 | 20.24 | 40.88 | 46.00 | -5.12 | peak | | |
| 3 | | 498.5099 | 17.98 | 21.43 | 39.41 | 46.00 | -6.59 | peak | | |
| 4 | | 714.8200 | 15.29 | 24.65 | 39.94 | 46.00 | -6.06 | peak | | |
| 5 | ! | 892.3300 | 13.26 | 27.32 | 40.58 | 46.00 | -5.42 | peak | | |

*:Maximum data x:Over limit !:over margin



Address: No. 5, Langshan 2nd Rd., North Hi-Tech Industrial park
Guangdong, China
Tel: 0755-86170306 Fax: 0755-86170310

Radiated Emission Measurement

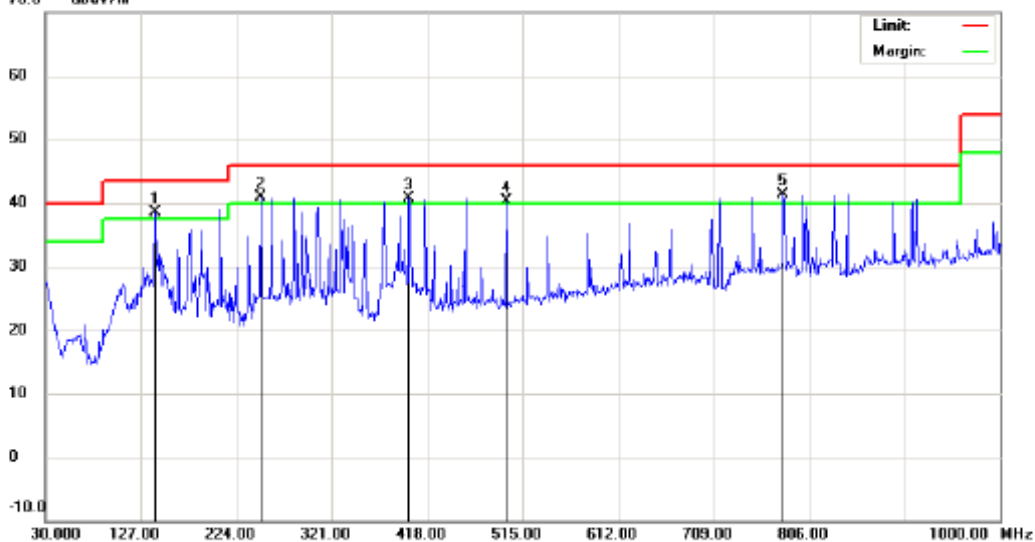
File: TS-781

Data: #10

Date: 2011-11-12

Time: 17:04:25

70.0 dBuV/m



Site site #1

Polarization: *Horizontal*

Temperature: 26

Limit: FCC Part15 B 3M Radiation

Power: AC 120V/60Hz

Humidity: 61 %

EUT: 7" Touchsquad tablet

Distance:

MN: TS-781

Mode: CAMERA

Note:

| No. | Mk. | Freq. | Reading Level | Correct Factor | Measurement | Limit | Over | Antenna Height | Table Degree | |
|-----|-----|----------|---------------|----------------|-------------|--------|-------|----------------|--------------|--------|
| | | MHz | dBuV | dB | dBuV/m | dBuV/m | dB | Detector | cm | degree |
| 1 | ! | 141.5500 | 21.46 | 17.11 | 38.57 | 43.50 | -4.93 | peak | | |
| 2 | ! | 249.2199 | 23.46 | 17.40 | 40.86 | 46.00 | -5.14 | peak | | |
| 3 | ! | 399.5699 | 21.97 | 18.69 | 40.66 | 46.00 | -5.34 | peak | | |
| 4 | ! | 498.5099 | 18.79 | 21.43 | 40.22 | 46.00 | -5.78 | peak | | |
| 5 | * | 779.8099 | 15.14 | 26.20 | 41.34 | 46.00 | -4.66 | peak | | |

*:Maximum data x:Over limit !:over margin



Address: No.5, Langshan 2nd Rd., North Hi-Tech Industrial park
Guangdong, China
Tel: 0755-86170306 Fax: 0755-86170310

Radiated Emission Measurement

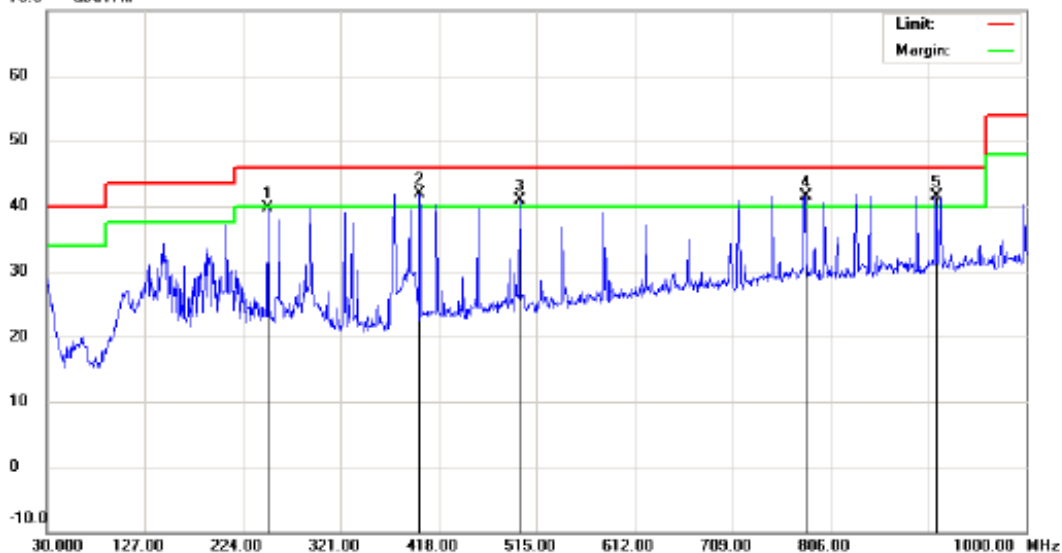
File: TS-781

Data: #11

Date: 2011-11-12

Time: 17:06:48

70.0 dBuV/m



Site: site #1

Polarization: *Horizontal*

Temperature: 26

Limit: FCC Part15 B 3M Radiation

Power: AC 120V/60Hz

Humidity: 61 %

EUT: 7" Touchsquad tablet

Distance:

M/N: TS-781

Mode: FULL LOAD

Note:

| No. | Mk. | Freq. | Reading Level | Correct Factor | Measurement | Limit | Over | Antenna Height | Table Degree | |
|-----|-----|----------|---------------|----------------|-------------|--------|-------|----------------|--------------|---------|
| | | MHz | dBuV | dB | dBuV/m | dBuV/m | dB | cm | degree | Comment |
| 1 | | 249.2199 | 22.35 | 17.40 | 39.75 | 46.00 | -6.25 | peak | | |
| 2 | * | 399.5699 | 23.20 | 18.69 | 41.89 | 46.00 | -4.11 | peak | | |
| 3 | ! | 498.5099 | 19.40 | 21.43 | 40.83 | 46.00 | -5.17 | peak | | |
| 4 | ! | 780.7799 | 15.28 | 26.18 | 41.46 | 46.00 | -4.54 | peak | | |
| 5 | ! | 909.7899 | 13.96 | 27.60 | 41.56 | 46.00 | -4.44 | peak | | |

*:Maximum data x:Over limit !:over margin



Address: No. 5, Langshan 2nd Rd., North Hi-Tech Industrial park
Guangdong, China
Tel: 0755-86170306 Fax: 0755-86170310

Radiated Emission Measurement

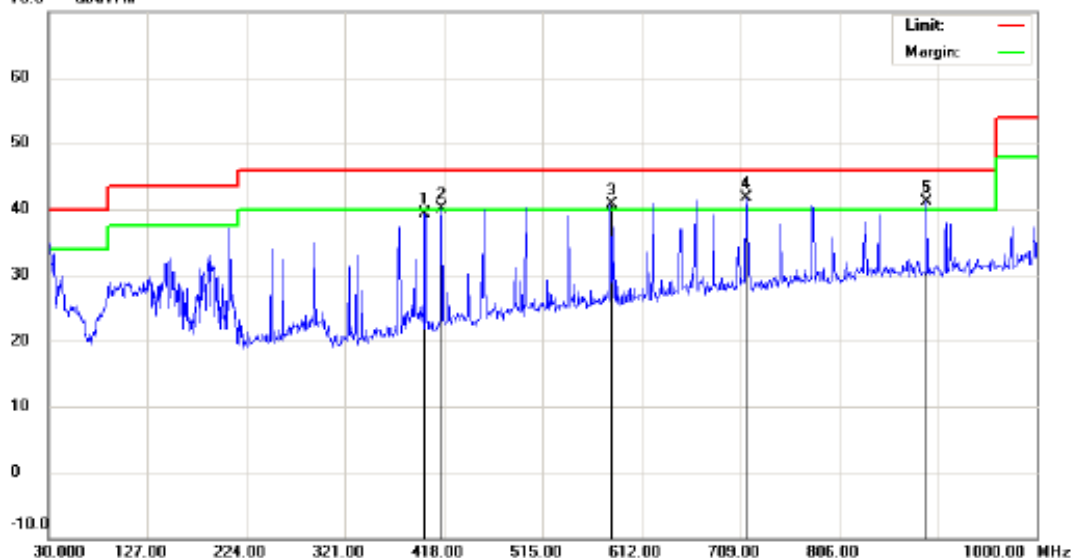
File: TS-781

Data: #12

Date: 2011-11-12

Time: 17:08:48

70.0 dBuV/m



Site site #1

Polarization: *Vertical*

Temperature: 26

Limit: FCC Part15 B 3M Radiation

Power: AC 120V/60Hz

Humidity: 61 %

EUT: 7" Touchsquad tablet

Distance:

M/N: TS-781

Mode: FULL LOAD

Note:

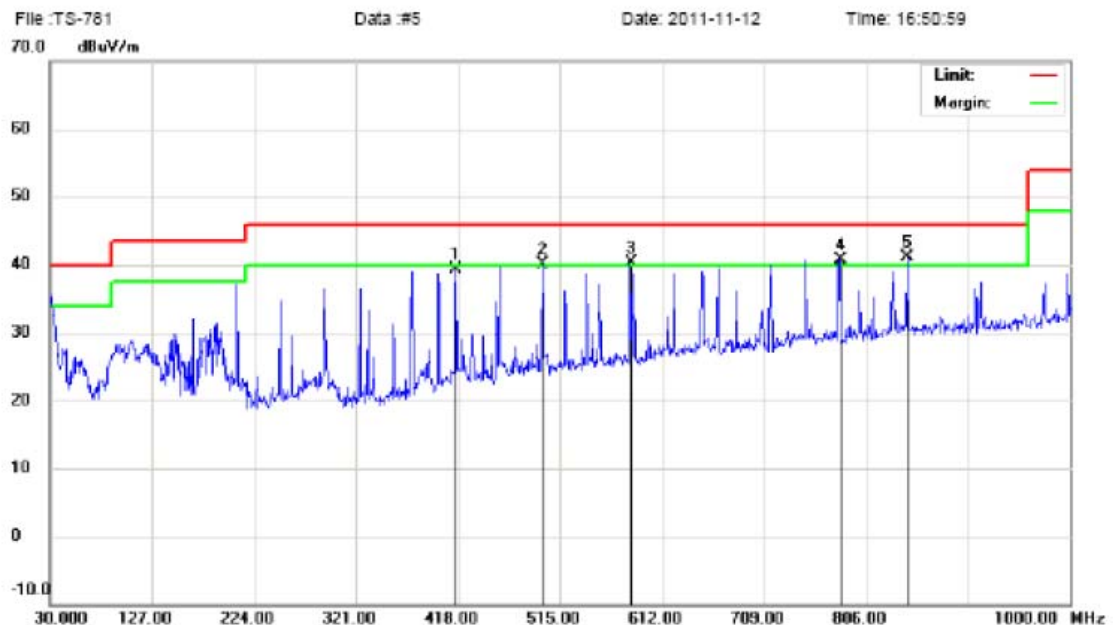
| No. | Mk. | Freq. | Reading Level | Correct Factor | Measurement | Limit | Over | Antenna Height | Table Degree | |
|-----|-----|----------|---------------|----------------|-------------|--------|-------|----------------|--------------|--------|
| | | MHz | dBuV | dB | dBuV/m | dBuV/m | dB | Detector | cm | degree |
| 1 | | 399.5699 | 20.69 | 18.69 | 39.38 | 46.00 | -6.62 | peak | | |
| 2 | ! | 416.0600 | 20.57 | 19.57 | 40.14 | 46.00 | -5.86 | peak | | |
| 3 | ! | 581.9299 | 17.80 | 22.92 | 40.72 | 46.00 | -5.28 | peak | | |
| 4 | * | 714.8200 | 16.97 | 24.65 | 41.62 | 46.00 | -4.38 | peak | | |
| 5 | ! | 892.3300 | 13.73 | 27.32 | 41.05 | 46.00 | -4.95 | peak | | |

*: Maximum data x: Over limit !: over margin



Address: No.5, Langshan 2nd Rd., North Hi-Tech Industrial park
Guangdong, China
Tel: 0755-86170306 Fax: 0755-86170310

Radiated Emission Measurement



Site site #1

Polarization: **Vertical**

Temperature: 26

Limit: FCC Part15 B 3M Radiation

Power: AC 120V/60Hz

Humidity: 61 %

EUT: 7" Touchsquad tablet

Distance:

MN: TS-781

Mode: BLUETOOTH

Note:

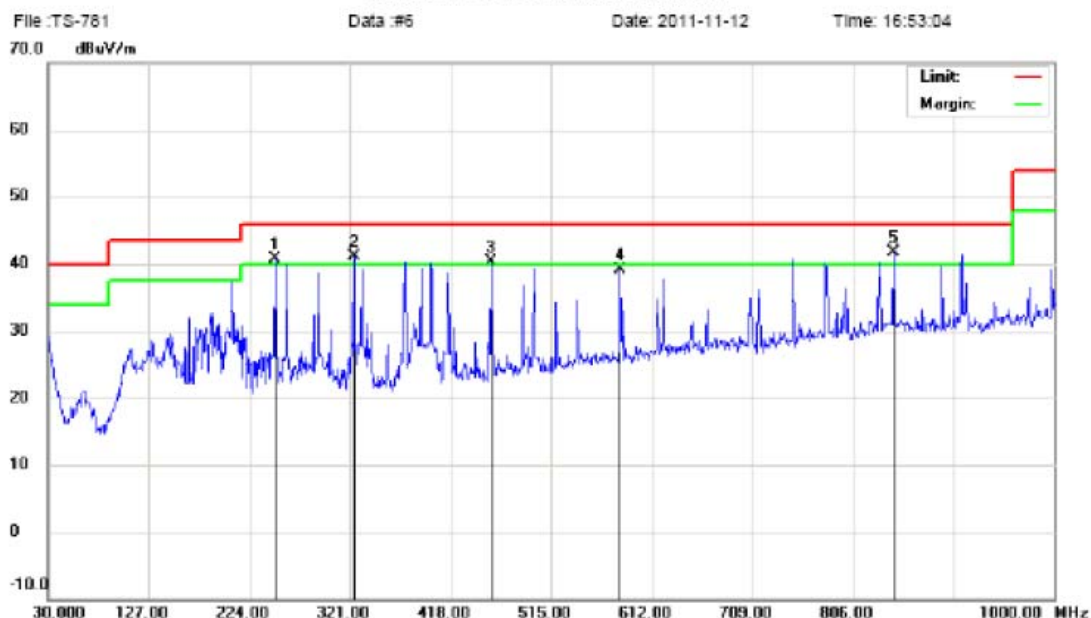
| No. | Mk. | Freq. | Reading Level | Correct Factor | Measurement | Limit | Over | Antenna Height | Table Degree | |
|-----|-----|----------|---------------|----------------|-------------|--------|-------|----------------|--------------|---------|
| | | MHz | dBuV | dB | dBuV/m | dBuV/m | dB | cm | degree | Comment |
| 1 | | 416.0600 | 19.82 | 19.57 | 39.39 | 46.00 | -6.61 | peak | | |
| 2 | ! | 498.5099 | 18.66 | 21.43 | 40.09 | 46.00 | -5.91 | peak | | |
| 3 | ! | 581.9299 | 17.47 | 22.92 | 40.39 | 46.00 | -5.61 | peak | | |
| 4 | ! | 780.7799 | 14.59 | 26.18 | 40.77 | 46.00 | -5.23 | peak | | |
| 5 | * | 844.8000 | 13.87 | 27.15 | 41.02 | 46.00 | -4.98 | peak | | |

*:Maximum data x:Over limit !:over margin



Address: No.5, Langshan 2nd Rd., North Hi-Tech Industrial park
Guangdong, China
Tel: 0755-86170306 Fax: 0755-86170310

Radiated Emission Measurement



Site: site #1

Polarization: **Horizontal**

Temperature: 26

Limit: FCC Part15 B 3M Radiation

Power: AC 120V/60Hz

Humidity: 61 %

EUT: 7" Touchsquad tablet

Distance:

M/N: TS-781

Mode: BLUETOOTH

Note:

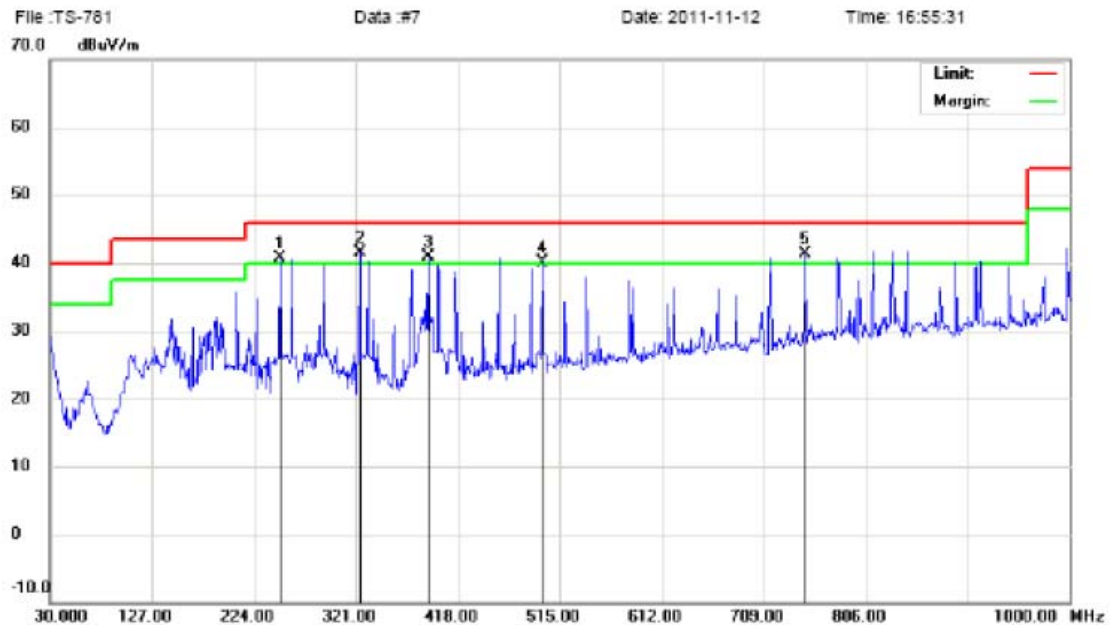
| No. | Mk. | Freq. | Reading Level | Correct Factor | Measurement | Limit | Over | Antenna Height | Table Degree | |
|-----|-----|----------|---------------|----------------|-------------|--------|-------|----------------|--------------|---------|
| | | MHz | dBuV | dB | dBuV/m | dBuV/m | dB | cm | degree | Comment |
| 1 | ! | 249.2199 | 23.25 | 17.40 | 40.65 | 46.00 | -5.35 | peak | | |
| 2 | ! | 324.8798 | 24.08 | 17.00 | 41.08 | 46.00 | -4.92 | peak | | |
| 3 | ! | 456.8000 | 20.08 | 20.24 | 40.32 | 46.00 | -5.68 | peak | | |
| 4 | | 581.9298 | 16.14 | 22.92 | 39.06 | 46.00 | -6.94 | peak | | |
| 5 | * | 844.7999 | 14.49 | 27.15 | 41.64 | 46.00 | -4.36 | peak | | |

*:Maximum data x:Over limit !:over margin



Address: No.5, Langshan 2nd Rd., North Hi-Tech Industrial park
Guangdong, China
Tel: 0755-86170306 Fax: 0755-86170310

Radiated Emission Measurement



Site site #1

Polarization: *Horizontal*

Temperature: 26

Limit: FCC Part15 B 3M Radiation

Power: AC 120V/60Hz

Humidity: 61 %

EUT: 7" Touchsquad tablet

Distance:

M/N: TS-781

Mode: WIFI

Note:

| No. | Mk. | Freq. | Reading Level | Correct Factor | Measurement | Limit | Over | Antenna Height | Table Degree | |
|-----|-----|----------|---------------|----------------|-------------|--------|-------|----------------|--------------|---------|
| | | MHz | dBuV | dB | dBuV/m | dBuV/m | dB | cm | degree | Comment |
| 1 | ! | 249.2199 | 23.27 | 17.40 | 40.67 | 46.00 | -5.33 | peak | | |
| 2 | * | 324.8798 | 24.53 | 17.00 | 41.53 | 46.00 | -4.47 | peak | | |
| 3 | ! | 389.8700 | 22.65 | 18.30 | 40.95 | 46.00 | -5.05 | peak | | |
| 4 | ! | 498.5099 | 18.70 | 21.43 | 40.13 | 46.00 | -5.87 | peak | | |
| 5 | ! | 748.7698 | 15.52 | 25.80 | 41.32 | 46.00 | -4.68 | peak | | |

*:Maximum data x:Over limit !:over margin



Address: No. 5, Langshan 2nd Rd., North Hi-Tech Industrial park
Guangdong, China
Tel: 0755-86170306 Fax: 0755-86170310

Radiated Emission Measurement

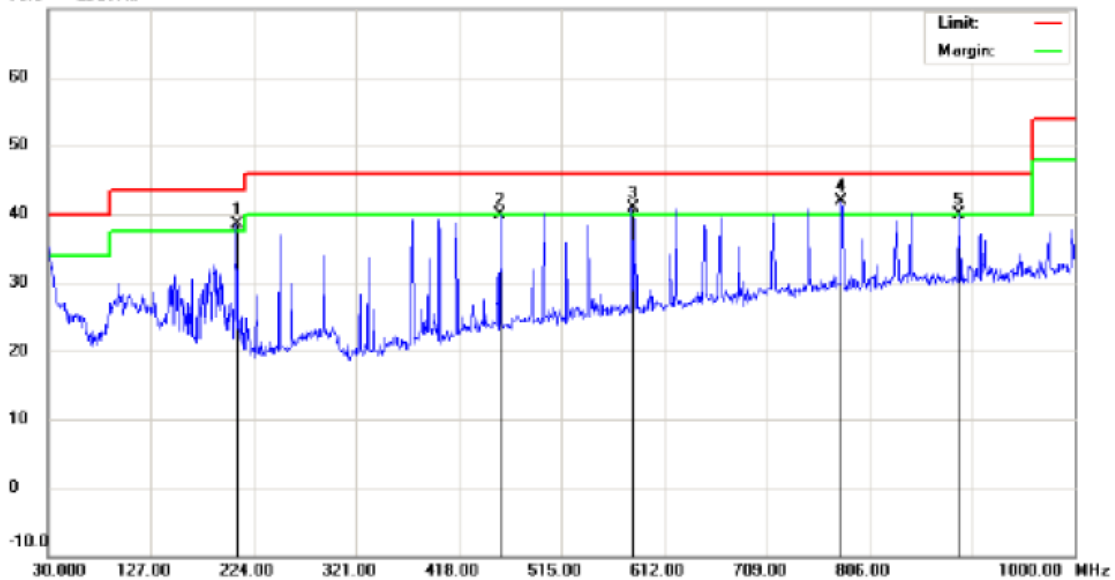
File: TS-781

Data: #8

Date: 2011-11-12

Time: 16:57:32

70.0 dBuV/m



Site site #1

Polarization: *Vertical*

Temperature: 26

Limit: FCC Part15 B 3M Radiation

Power: AC 120V/60Hz

Humidity: 61 %

EUT: 7" Touchsquad tablet

Distance:

M/N: TS-781

Mode: WIFI

Note:

| No. | Mk. | Freq. | Reading Level | Correct Factor | Measurement | Limit | Over | Antenna Height | Table Degree | |
|-----|-----|----------|---------------|----------------|-------------|--------|-------|----------------|--------------|---------|
| | | MHz | dBuV | dB | dBuV/m | dBuV/m | dB | cm | degree | Comment |
| 1 | ! | 207.5100 | 21.98 | 16.53 | 38.51 | 43.50 | -4.99 | peak | | |
| 2 | | 457.7699 | 19.67 | 20.29 | 39.96 | 46.00 | -6.04 | peak | | |
| 3 | ! | 581.9299 | 18.01 | 22.92 | 40.93 | 46.00 | -5.07 | peak | | |
| 4 | * | 779.8099 | 15.72 | 26.20 | 41.92 | 46.00 | -4.08 | peak | | |
| 5 | | 890.3899 | 12.70 | 27.30 | 40.00 | 46.00 | -6.00 | peak | | |

*:Maximum data x:Over limit !:over margin

Above 1 GHz**Operation Mode:** USB Mode**Test Date:** November. 12, 2011**Temperature:** 24°C**Tested by:** Habby Guo**Humidity:** 70 % RH**Polarity:** Ver. / Hor.

| Freq. (MHz) | Ant. Pol H/V | Peak Reading (dBuV) | AV Reading (dBuV) | Ant. / CL CF (dB) | Actual Fs | | Peak Limit (dBuV/m) | AV Limit (dBuV/m) | AV Margin (dB) |
|----------------|-----------------|---------------------------|-------------------------|-------------------------|------------------|----------------|---------------------------|-------------------------|----------------------|
| | | | | | Peak (dBuV/m) | AV (dBuV/m) | | | |
| 1248.38 | H | 47.89 | 31.34 | 13.45 | 61.34 | 44.79 | 74.00 | 54.00 | -9.21 |
| N/A | | | | | | | | | >20 |
| 1248.38 | V | 49.11 | 29.73 | 13.45 | 62.56 | 43.18 | 74.00 | 54.00 | -10.82 |
| N/A | | | | | | | | | >20 |

Notes:

1. Measuring frequencies from 1 GHz to 6GHz.
2. Radiated emissions measured in frequency above 1000MHz were made with an instrument using Peak detector mode and average detector mode of the emission shown in Actual FS column.
3. The frequency that above 3GHz is mainly from the environment noise.

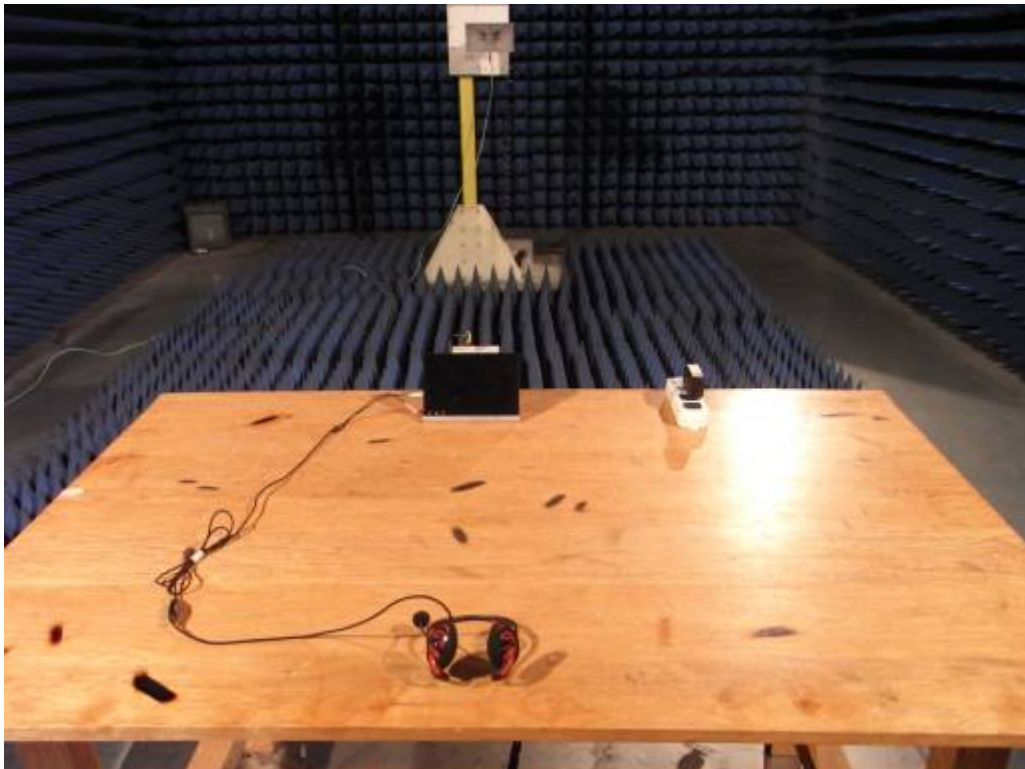
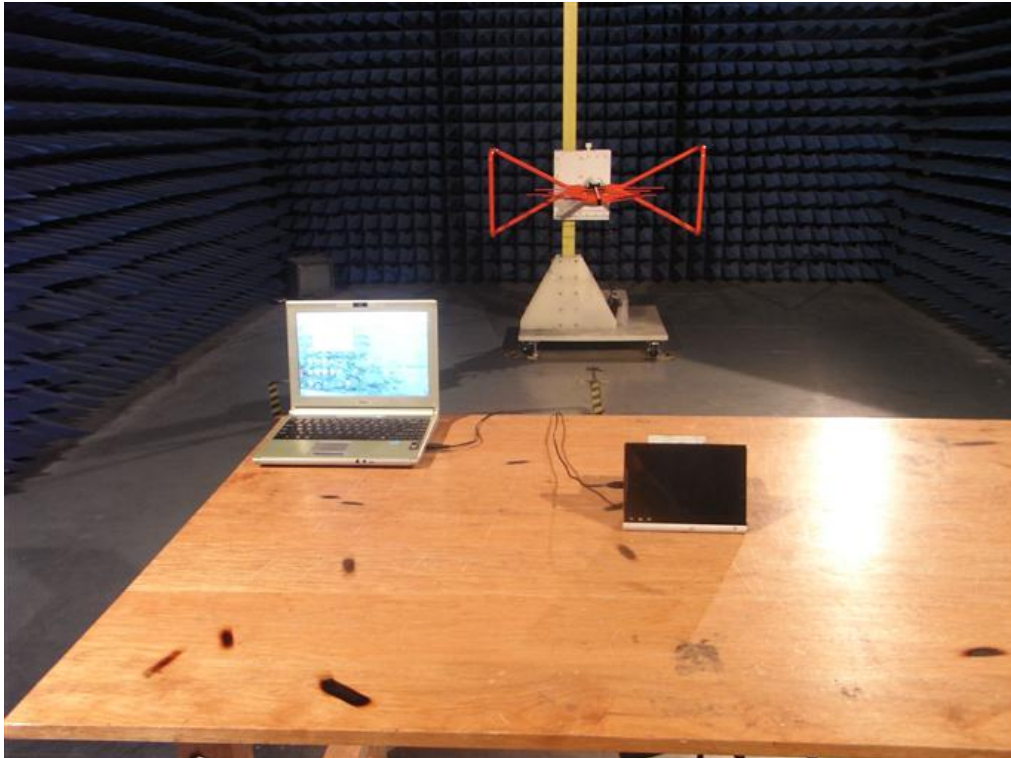
APPENDIX 1
PHOTOGRAPHS OF TEST SETUP

CE TEST SETUP



RE TEST SETUP





APPENDIX 2
PHOTOGRAPHS OF EUT

FRONT VIEW OF SAMPLE



BACK VIEW OF SAMPLE



LEFT VIEW OF SAMPLE



RIGHT VIEW OF SAMPLE



TOP VIEW OF SAMPLE



BOTTOM VIEW OF SAMPLE



PHOTO OF POWER SUPPLY



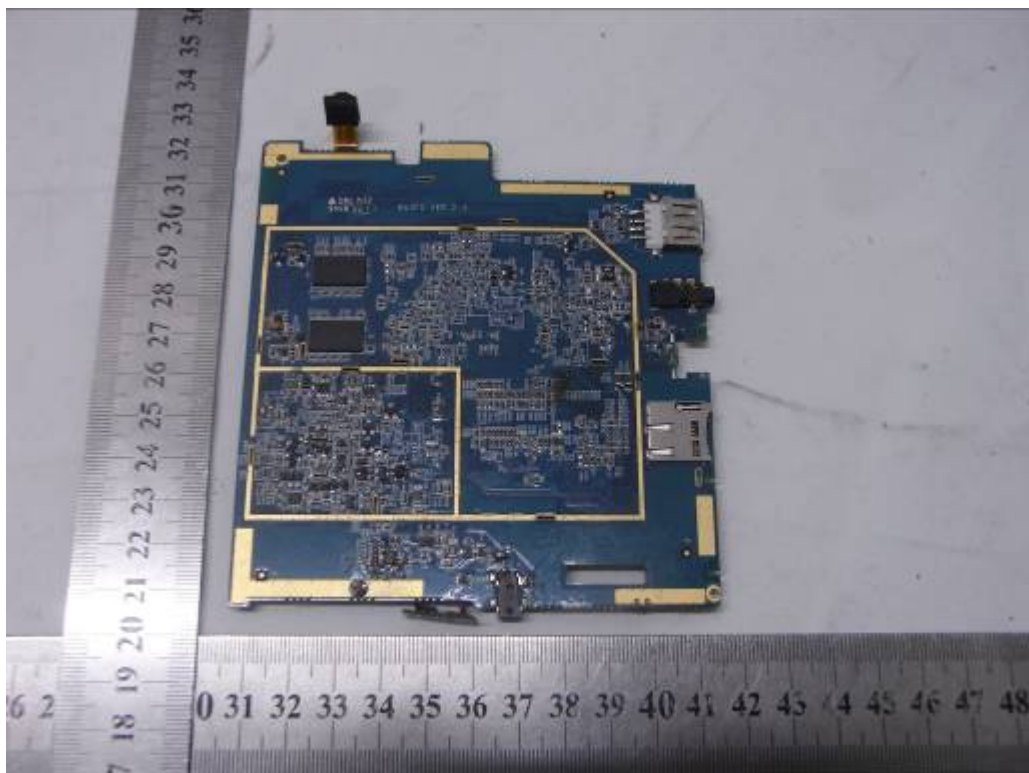
PHOTO OF THE ENTIRE SAMPLE



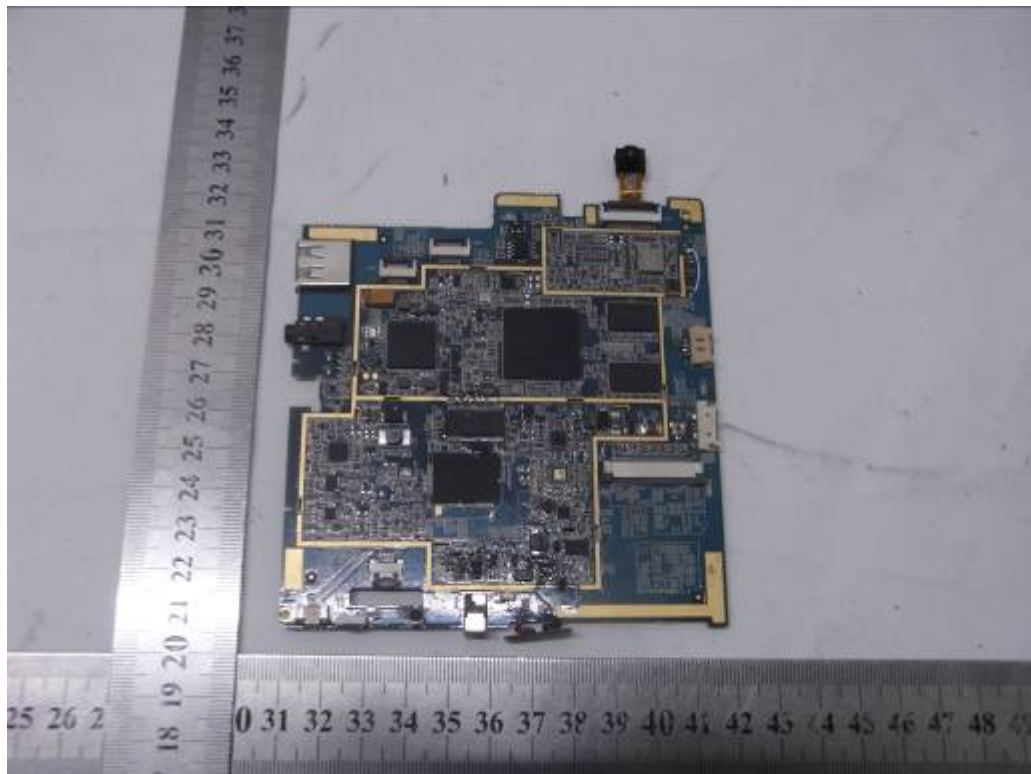
INTERNAL PHOTO OF SAMPLE – 1



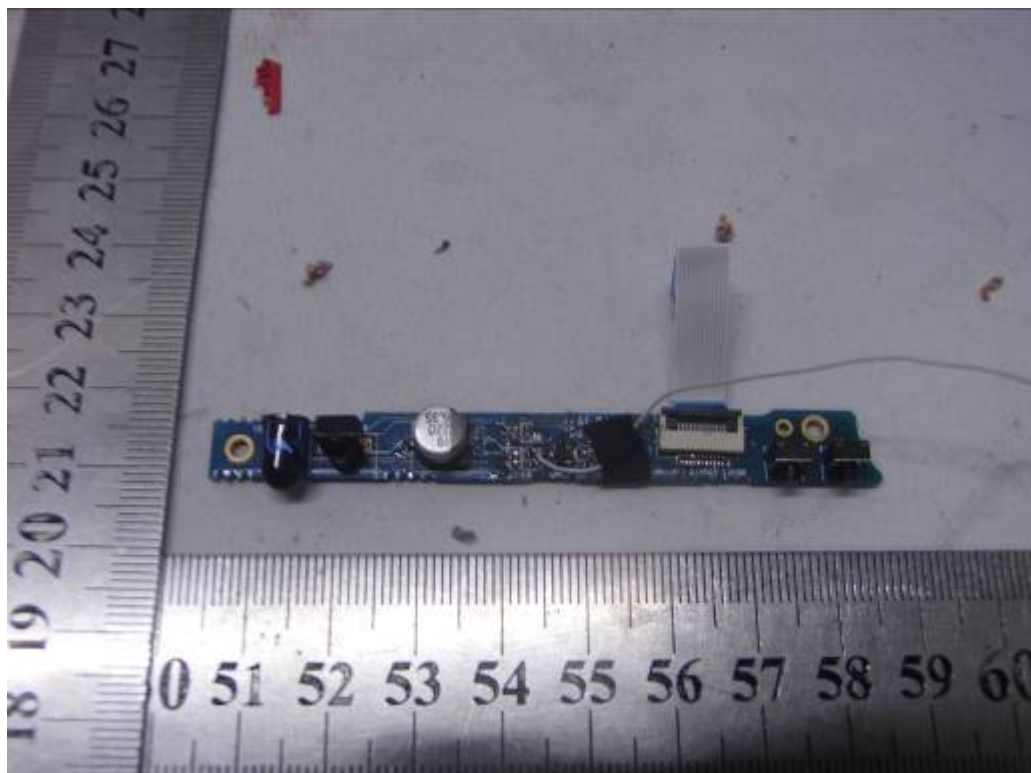
INTERNAL PHOTO OF SAMPLE -2



INTERNAL PHOTO OF SAMPLE -3



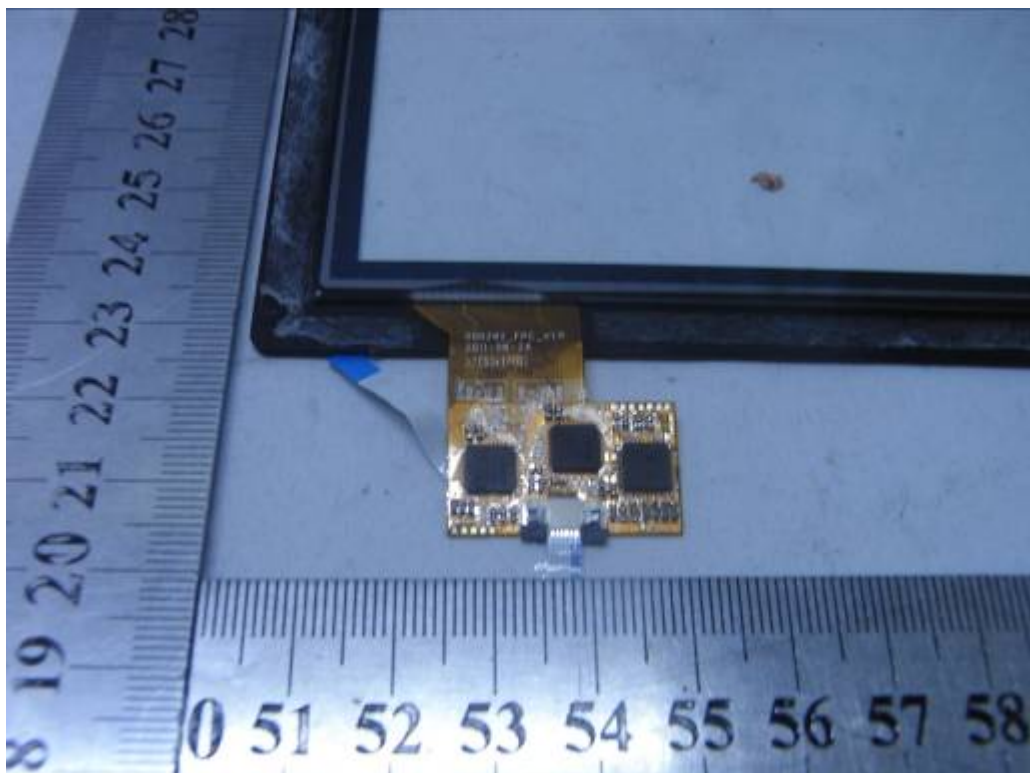
INTERNAL PHOTO OF SAMPLE -4



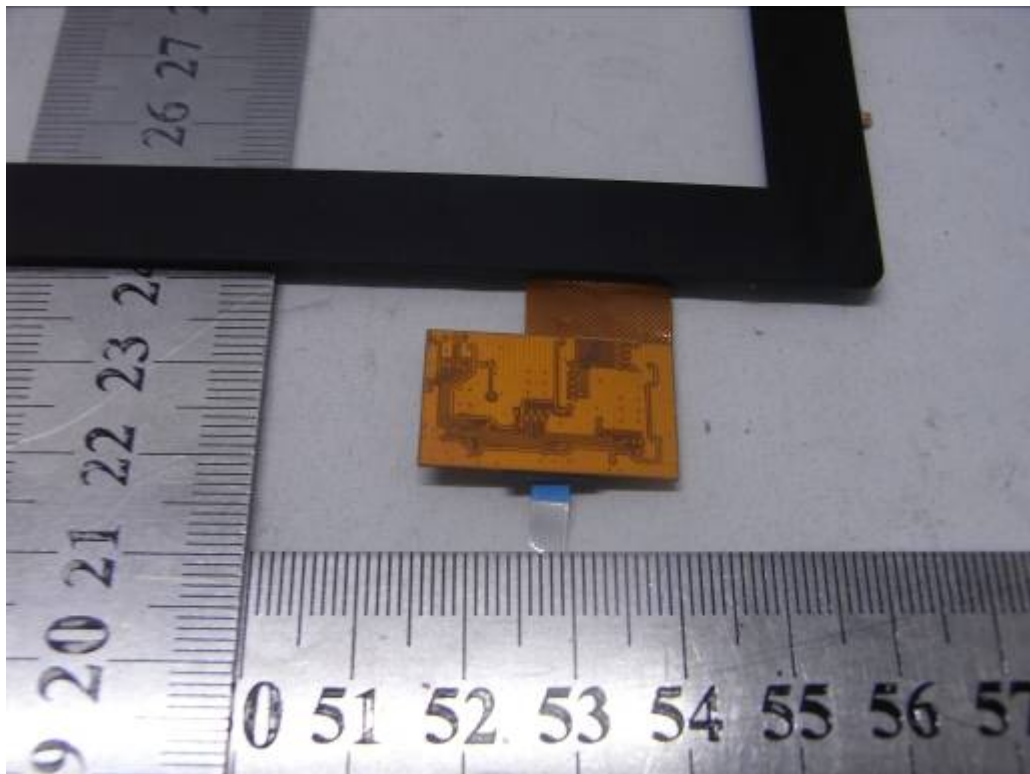
INTERNAL PHOTO OF SAMPLE -5



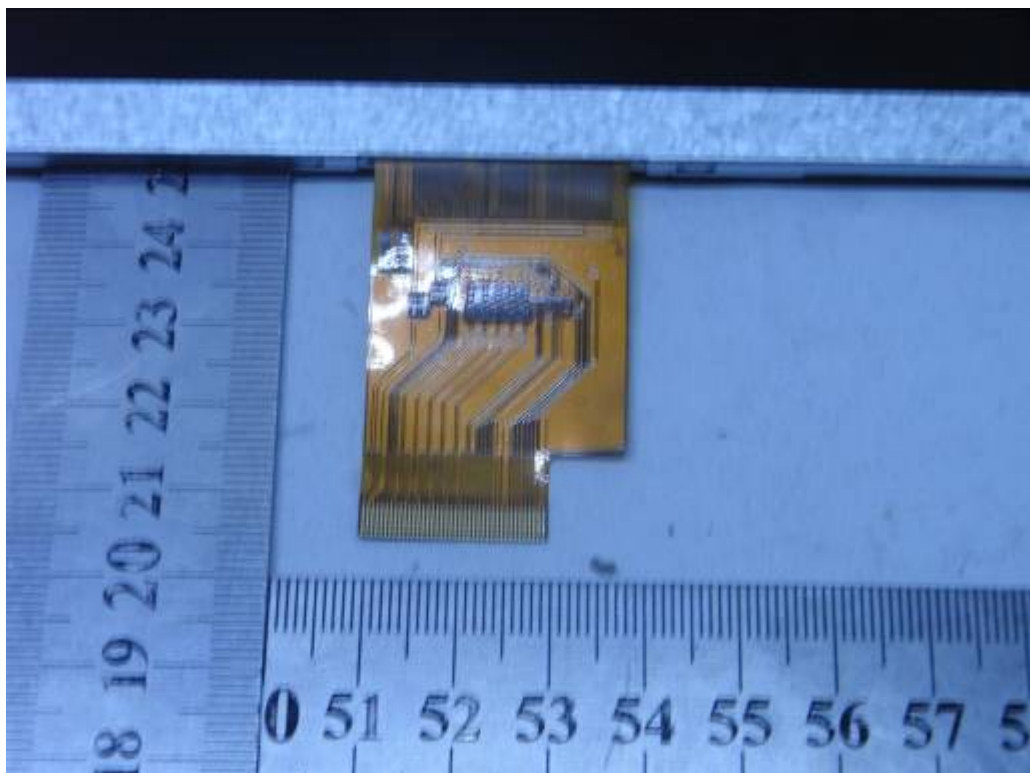
INTERNAL PHOTO OF SAMPLE -6



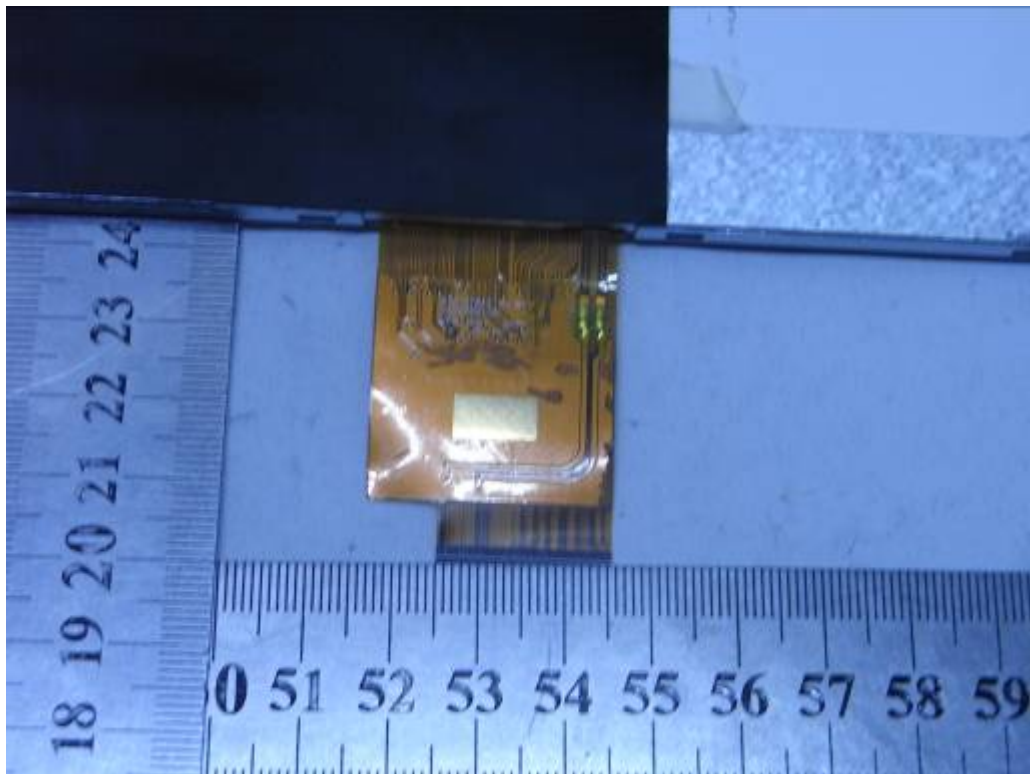
INTERNAL PHOTO OF SAMPLE -7



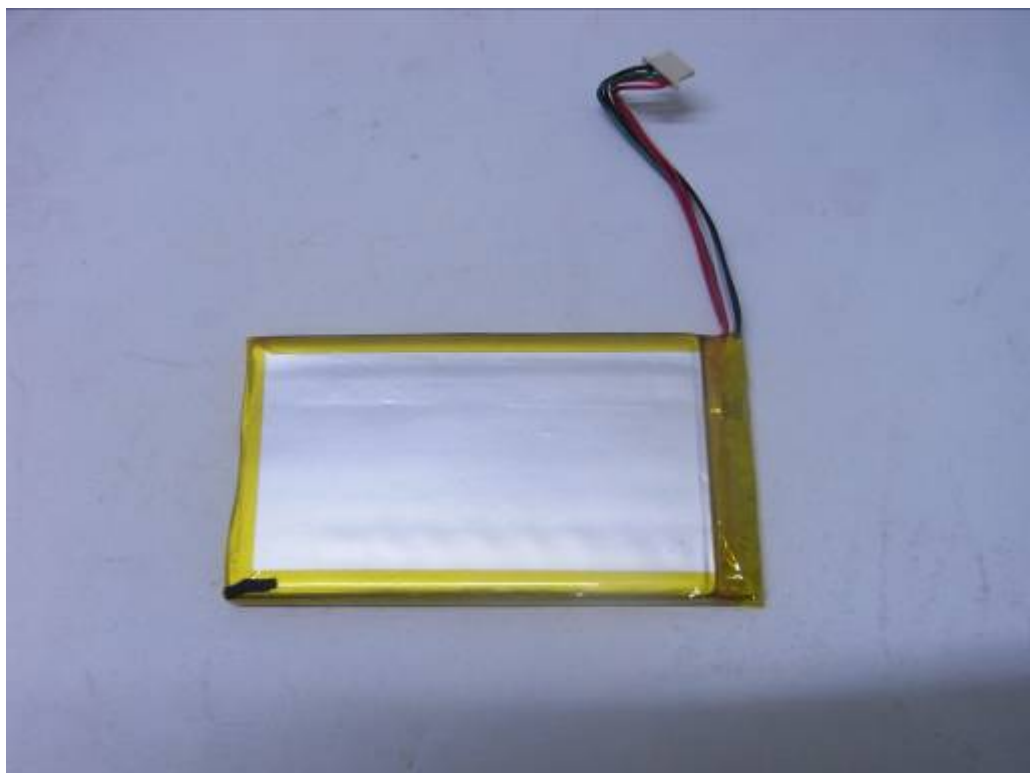
INTERNAL PHOTO OF SAMPLE -8



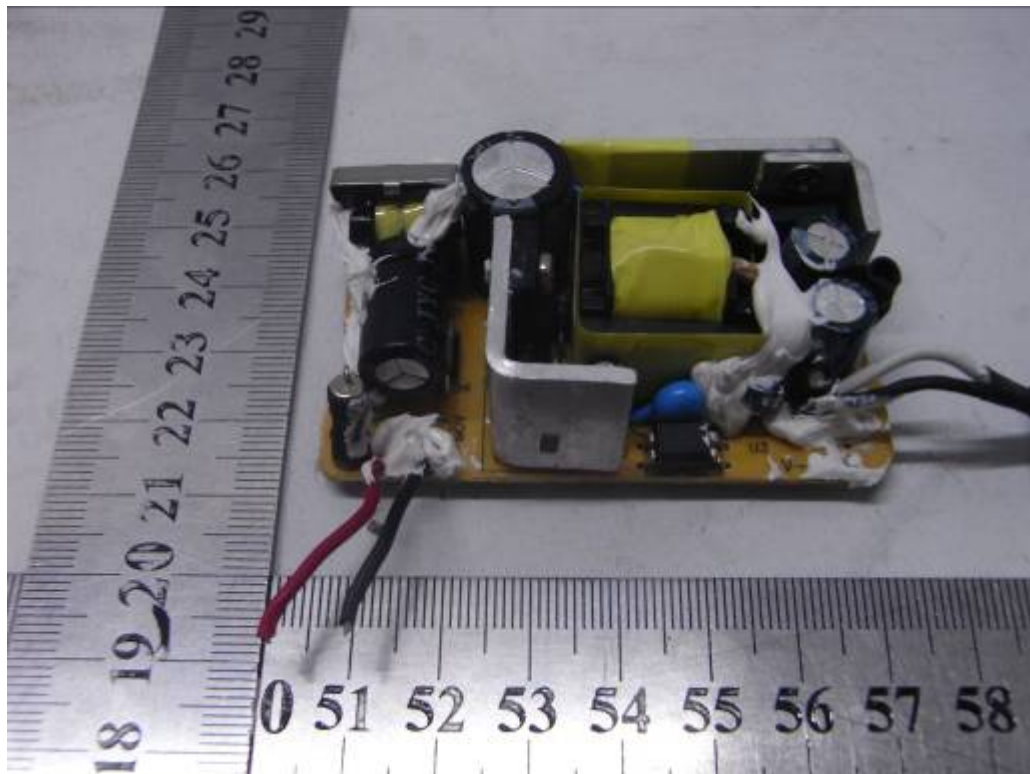
INTERNAL PHOTO OF SAMPLE -9



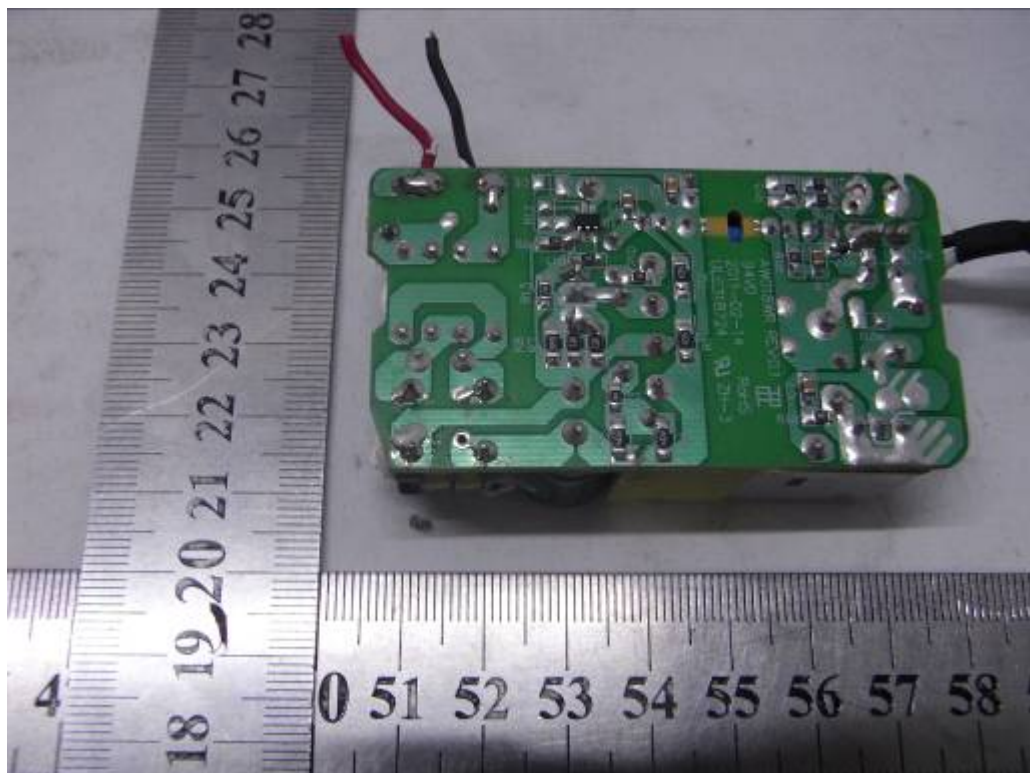
INTERNAL PHOTO OF SAMPLE -10



INTERNAL PHOTO OF POWER SUPPLY-1



INTERNAL PHOTO OF POWER SUPPLY-2



-----END OF REPORT-----