

PauxBird

Wireless Page Turner

User Manual



Model No.: PT-K1

Thank You for Choosing Our Page-Turner

We're thrilled you've selected our page-turner, designed to simplify your eBook reading experience. Whether you're on a Kindle, Kobo, smartphone, or tablet, prolonged reading often leads to hand fatigue from constant page-turning. With our device, you can kick back, keep your hands warm under a blanket, and turn pages effortlessly.

Our page-turner operates without the need for Bluetooth. Simply press the controller to flip through pages at your leisure. You'll wonder how you ever managed without it, as it works seamlessly with all capacitive touch screens.

Should you encounter any issues, reach out to us anytime. We're available 24/7 to assist you. Thank you again for your support.

greatwending@hotmail.com

Package Contents



① Remote



② Receiver



③ Charging Case

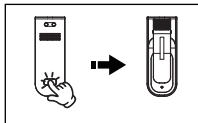


④ USB-C Cable

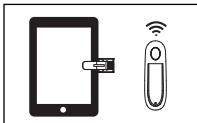


⑤ User Manual

Instructions for Use



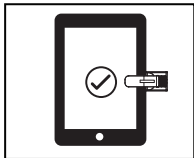
Step 1
Press the button on the receiver



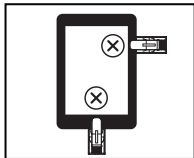
Step 2
Attach receiver for Kindle Screen

Important Tips

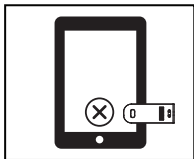
The thickness of your device with case can noe exceed **0.45 inch**, otherwise the page turner will not work properly.



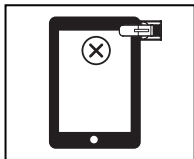
①The silicone pad touches the front of the screen. It can work.



②The silicone pad doesn't touch the screen. Don't work!



③The silicone pad doesn't touch the screen. Don't work!

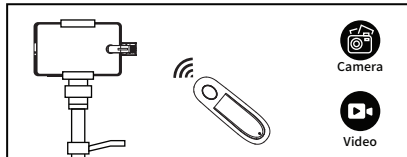


④Don't clip on this area, or it will show menu bar.

Multi-functional Use

Hands Free for Camera and Video

(Tips: When using this function, the receiver must be clipped onto the confirmation button on the screen.)



FAQ

What is the effective distance of the wireless presenter?

It supports an effective working distance of 10-30 meters, and the specific distance is affected by the environment and device model.

Common reasons and solutions for the wireless presenter not working?

The battery is dead or the battery is installed incorrectly.

The USB receiver is not inserted correctly or is damaged.

FCC Warning

This device complies with Part 15 of the FCC Rules. Operation is subject to the following two conditions:

(1) This device may not cause harmful interference, and (2) this device must accept any interference received, including interference that may cause undesired operation.

NOTE 1: This equipment has been tested and found to comply with the limits for a Class B digital device, pursuant to part 15 of the FCC Rules. These limits are designed to provide reasonable protection against harmful interference in a residential installation. This equipment generates, uses and can radiate radio frequency energy and, if not installed and used in accordance with the instructions, may cause harmful interference to radio communications. However, there is no guarantee that interference will not occur in a particular installation. If this equipment does cause harmful interference to radio or television reception, which can be determined by turning the equipment off and on, the user is encouraged to try to correct the interference by one or more of the following measures:

- Reorient or relocate the receiving antenna.
- Increase the separation between the equipment and receiver.
- Connect the equipment into an outlet on a circuit different from that to which the receiver is connected.
- Consult the dealer or an experienced radio/TV technician for help.

NOTE 2: Any changes or modifications to this unit not expressly approved by the party responsible for compliance could void the user's authority to operate the equipment.

The device has been evaluated to meet general RF exposure requirement. The device can be used in portable exposure condition without restriction.

PauxBird



MADE IN CHINA