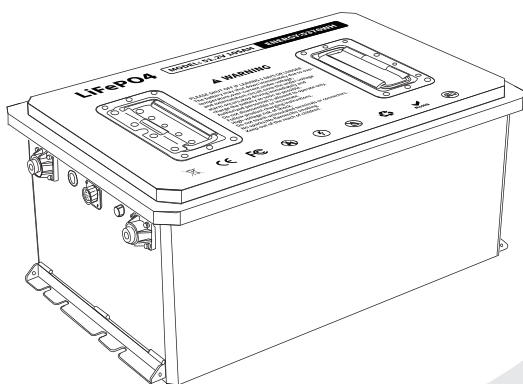


Golf Cart LiFePO4 Battery

51.2V 105AH
(5376WH)



01 Features



Overcharge
Protection



Over Discharge
Protection



Overcurrent
Protection



Balance
Function



Short Circuit
Protection



Overvoltage
Protection



Temperature
Protection



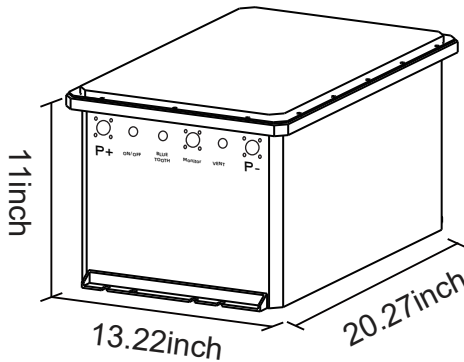
Environmental
Friendly

02 Specification

Electrical Characteristics	Rated Voltage	51.2V
	Rated Capacity	105Ah
	Usable Capacity	105Ah
	Energy	5376Wh
	Cycle Life	≥6000 times
	Months Self Discharge	< 3%
	Efficiency of Charge	100% @0.5C
	Efficiency of Discharge	90%-100% @1C
Standard Charge	Charge Voltage	58.4V \pm 0.2V
	Charge Mode	CC/CV
	Max. Charge Current	100A
	Charge Cut-off Voltage	58.4±0.2V
Standard Discharge	Max. Discharge Current	250A
	Discharge Cut-off Voltage	40V
Environmental	Charge Temperature	32°F to 122°F / 0°C to 50°C
	Discharge Temperature	-4°F to 140°F / -20°C to 60°C
	Storage Temperature	14°F to 122°F / -10°C to 50°C
Mechanical	Plastic Case	metal
	Dimensions	L20.27*W13.22*H11inch/L515*W336*H280mm
	Weight	138.6lb / 57.6kg
	Terminal	M8
	Communication	/

03 Sizes

Pack Battery



Terminal & Post Bolts

Terminal Size: M8 (1.25mm Metric Thread)

Post Bolts: M8 (1.25mm Metric Thread*14mm Bolt Length)

(The bolts can be replaced with M8 bolts of other lengths based on actual needs.)

04 Warranty Policy

We provide a two-years warranty for all batteries. Our two years battery warranty includes the following privileges, if used correctly according to the manual :

- We will assist in analyzing the customer's problem within 24 hours, help solve the problem, restore battery usage, and introduce the best use method.
- If the problem cannot be resolved, we will send a new battery to replace the defective battery. And the defective battery needs to be returned to our warehouse, will be inspected and tested by our technical team.

05 Charging Tips

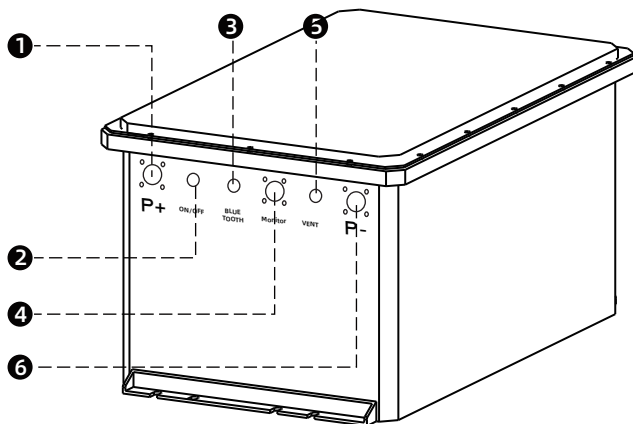
★ About Charging Voltage:

Based on the characteristics of Lithium Phosphate (LiFePO₄) batteries, all LiFePO₄ batteries have violent internal chemical reactions during the charging process, the lithium ions are very active, and the battery voltage is relatively high.

After charging and disconnecting the battery from the power source, the chemical reactions inside the battery slow down and the battery's voltage gradually decreases and stabilizes.

If you need to test the accurate and stable voltage of the battery, please test its voltage after leaving the battery for more than 120 minutes after disconnecting the power supply.

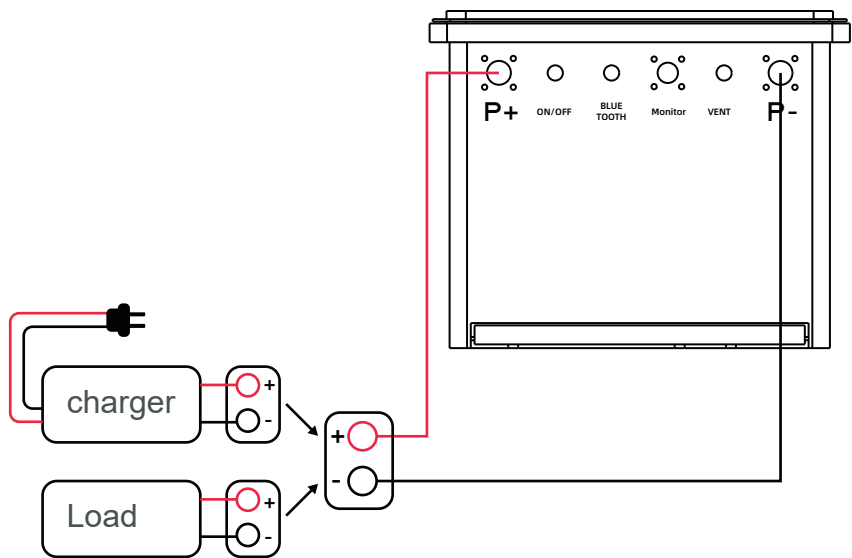
06 Appearance introduction



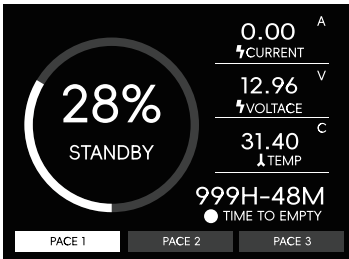
- ❶ P+: Battery pack output / Load positive terminal interface; Charger positive terminal interface.
- ❷ Power Switch: Turns output ON/OFF. Press once to enable output; press again to disable output.
- ❸ Bluetooth Signal: Bluetooth signal transmission and reception.
- ❹ Display Interface: External display mounting port. Insert dedicated connector into the notch position and tighten screws.
- ❺ Vent: Releases internal heat and pressure during product operation.
- ❻ P-: Battery pack output / Load negative terminal interface; Charger negative terminal interface.

07 Electrical connection

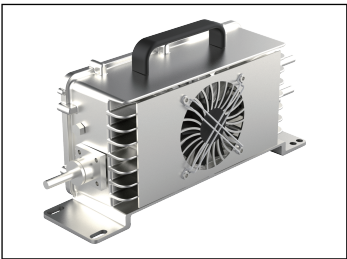
The connection system between the battery and the device



08 Attachment



Intelligent lithium battery display screen



Charger

DANGER!

- ! Do not immerse the battery in water or allow it to get wet.
- ! Do not use or store the battery near sources of heat such as a fire or heater.
- ! Do not use any chargers other than those recommended by manufacturer.
- ! Do not reverse the positive(+) and negative(-) terminals.
- ! Do not connect the battery directly to wall outlets or car cigarette-lighter sock ets.
- ! Do not put the battery into a fire or apply direct heat to it.
- ! Do not short-circuit the battery by connecting wires or other metal objects to the positive(+) and negative(-) terminals.
- ! Do not pierce the battery casing with a nail or other sharp object, break it open with a hammer, or step on it.
- ! Do not strike, throw or subject the battery to sever physical shock.
- ! Do not directly solder the battery terminals.
- ! Do not attempt to disassemble or modify the battery in any way.
- ! Do not place the battery in a microwave oven or pressurized container.
- ! Do not use the battery in combination with primary batteries(such as dry-cell batteries) or batteries of different capacity, type or brand.
- ! Do not use the battery if it gives off an odor, generates heat, becomes discolored or deformed, or appears abnormal in any way. If the battery is in use or being recharged, remove it from the device or charger immediately and discontinue use.

FC CE   **RoHS**
MADE IN CHINA

09 Bluetooth APP Download



Bluetooth App Download



Instructions for Using the Display Screen

This device complies with part 15 of the FCC Rules. Operation is subject to the following two conditions: (1) This device may not cause harmful interference, and (2) this device must accept any interference received, including interference that may cause undesired operation.

Any Changes or modifications not expressly approved by the party responsible for compliance could void the user's authority to operate the equipment.

Note: This equipment has been tested and found to comply with the limits for a Class B digital device, pursuant to part 15 of the FCC Rules. These limits are designed to provide reasonable protection against harmful interference in a residential installation. This equipment generates uses and can radiate radio frequency energy and, if not installed and used in accordance with the instructions, may cause harmful interference to radio communications. However, there is no guarantee that interference will not occur in a particular installation. If this equipment does cause harmful interference to radio or television reception, which can be determined by turning the equipment off and on, the user is encouraged to try to correct the interference by one or more of the following measures:

- Reorient or relocate the receiving antenna.
- Increase the separation between the equipment and receiver.
- Connect the equipment into an outlet on a circuit different from that to which the receiver is connected.
- Consult the dealer or an experienced radio/TV technician for help.
- This equipment complies with FCC radiation exposure limits set forth for an uncontrolled environment. This equipment should be installed and operated with minimum distance 20cm between the radiator & your body.