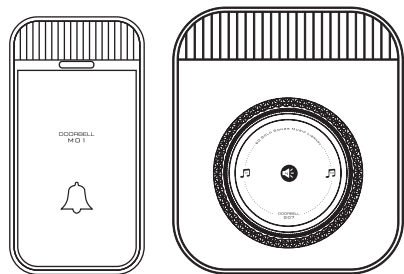
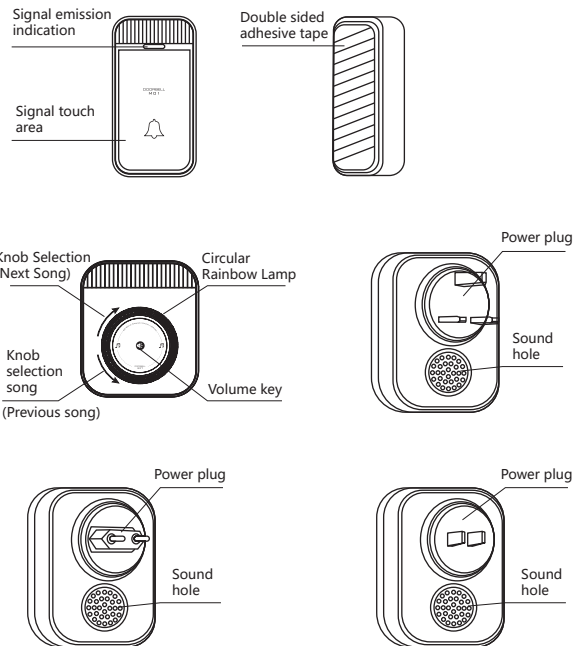


User Manual for WIRELESS DOORBELL M01-G07



Thank you for choosing our product!
For better use of this product, please
carefully read the product manual before
installation and follow the instructions for
correct installation and use.

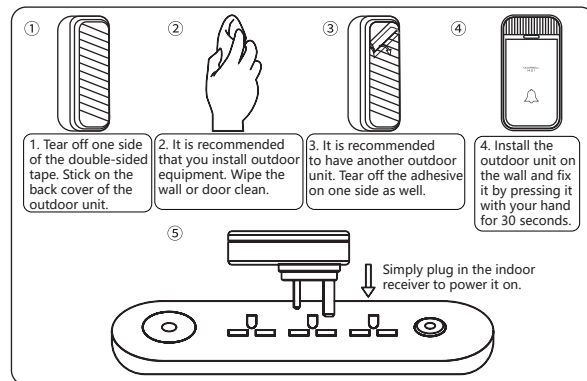
Schematic diagram of product function buttons



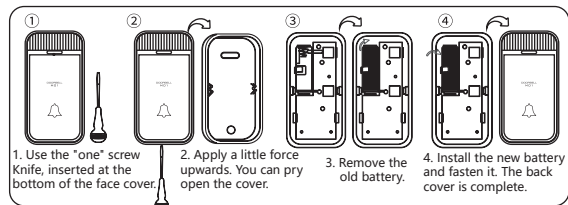
Product specifications

Technical Parameter	Receiver	Transmitter
Voltage range	85-260V	Powered by a 12V23A DC battery
Operation temperature	-20-55°C	-20-65°C
Distance	200 meters of open space with obstacles ranging from 10 to 80 meters	
Operating Frequency	433.92MHz	
Serial rate	One millionth	Volume : 0-100dB
Power consumption	0.25W	Standby 0mA working<20mA
Waterproof grade	No waterproof function	IP44
Product dimensions(LWH)	83.6x72.6x19.5mm	75.6x39.5x15.8mm
Product weight	82g	27g

Installation Method



Method for replacing batteries in outdoor transmitters



Product overview

This product is different from traditional wireless doorbells. This series of transmitter and receiver products can be freely paired and operated easily. The frequency of use of this product complies with national regulations and will not produce harmful electromagnetic interference.

Product features

- European and American fashionable exterior design, simple, elegant, and unique style;
- Ultra low power consumption design, energy-saving and long-lasting use;
- 300 meters remote control/reception distance;
- 60 chord ringtones to choose from;
- 4-level volume adjustment (with mute function);
- Adopting advanced RF technology solutions for design;
- The song selection button is independently innovatively designed, using a rotary encoder switch design, allowing for easy and flexible selection of songs.

Product function

- Ordinary household doorbell caller;
- For special purposes such as communication, paging, and patient care;
- Ordinary business office access control call function.

Applicable place

- Residential areas, factories, hotels, hospitals, teahouses, shops, and office spaces.

Clear all transmitters (referred to as clear code)

1. Touch the volume button "VOL / 📢" on the receiver with your fingers, then plug in the power and keep it on for at least 3 seconds. After that, if you hear the music change, it means that all transmitters have been cleared and the code has been successfully cleared.

2. Verification method:
Press the previously paired transmitter, but the receiver cannot respond. If it still rings, follow the above method until successful.

Work environment

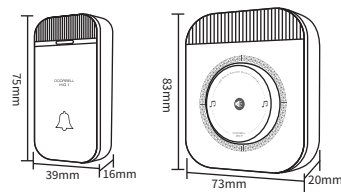
- The working temperature of the transmitter is -20-65 °C;
- The working temperature of the receiver is -20-55 °C.

Add or update transmitter method (referred to as code recording)

1. All accompanying shipments have been paired by the manufacturer before leaving the factory, and can be directly powered on for use. If adding or replacing, you can learn pairing according to the following methods:

Pairing method: 1. After powering on both the transmitter and receiver of the product, press the volume button on the receiver without releasing it, and press the transmitter button until the music changes. Generally, pairing is successful within 3 seconds. At this time, press the transmitter button, and the receiver will ring, indicating successful pairing. If the pairing is unsuccessful, repeat the above steps until successful.

Product size



⚠️ Precautions

Wireless signals are easily affected by metal, walls, concrete, obstacles, etc. (such as no signal or weak signal for mobile phones in elevators or enclosed iron houses). Doorbell products can reach 150-200m in open and interference free environments, and can generally penetrate anti-theft doors, walls, etc. up to 5-80m (depending on the specific environment).

1. Open the packaging, test the specific installation position first, and then consider fixing the transmitter with double-sided tape or screws;
 2. If the receiving distance is particularly short, avoid placing it on a metal door or metal door frame. Please change the position of the receiver;
 3. The receiver should be kept as far away as possible from places with magnetic fields or signal interference sources such as induction cookers, televisions, and speakers;
 4. The closer the straight-line distance between the transmitter and receiver through the wall, the better the signal effect.
- Non professionals are not allowed to open and repair it on their own to avoid damaging precision electronic components;
 - There is a high-voltage circuit inside, please do not open it for use;
 - Please avoid prolonged exposure to sunlight and installation in metal positions;
 - Proper use of this product can effectively extend its lifespan;
 - The actual remote control distance may be shortened due to environmental interference factors;
 - If the usage distance is significantly shortened or there is a leakage sound, please replace the battery.

Product after-sales service

- This product is eligible for repair services within 2 years from the date of sale;
- Damage caused by improper use, accidental damage, or self opening for repair is not covered by the warranty;
- The product accessories are not covered by the warranty.

Warranty Card	
User Name	
Purchasing date	
User address	
User phone number	

Product Qualification Certificate	
This product has passed the inspection and is allowed to leave the factory.	
Model name	
Examination clerk	
Inspection date	

Product list

Transmitter * 1, receiver * 1, double-sided sponge adhesive * 1, battery * 1, instruction manual * 1, packaging box * 1

This device complies with part 15 of the FCC Rules. Operation is subject to the following two conditions: (1) This device may not cause harmful interference, and (2) this device must accept any interference received, including interference that may cause undesired operation.

Any Changes or modifications not expressly approved by the party responsible for compliance could void the user's authority to operate the equipment.

Note: This equipment has been tested and found to comply with the limits for a Class B digital device, pursuant to part 15 of the FCC Rules. These limits are designed to provide reasonable protection against harmful interference in a residential installation. This equipment generates uses and can radiate radio frequency energy and, if not installed and used in accordance with the instructions, may cause harmful interference to radio communications. However, there is no guarantee that interference will not occur in a particular installation. If this equipment does cause harmful interference to radio or television reception, which can be determined by turning the equipment off and on, the user is encouraged to try to correct the interference by one or more of the following measures:

- Reorient or relocate the receiving antenna.
- Increase the separation between the equipment and receiver.
- Connect the equipment into an outlet on a circuit different from that to which the receiver is connected.
- Consult the dealer or an experienced radio/TV technician for help.

FCC Radiation Exposure statement

The device has been evaluatec to meel general RF exposure requirement. The device can be used in portable exposure condition without restriction.