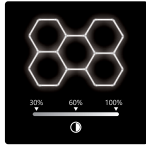


Discover More from Litezone



Lumra No-Dimmable Series



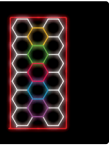
Lumra Dimmable Series



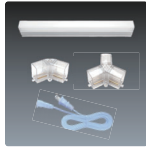
Lumra RGB Series



Lumra 3 CCT Series



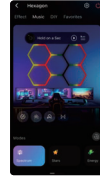
Lumra Colorful Series



Lumra Accessories Series

For more information, support, or warranty service, please contact us:
• Website: www.hi-litezone.com • Email: service@hi-litezone.com

Music Effects:



Click the effect icons at the bottom to choose different music effects.



• Music collection methods:

• Set sensitivity:

• Adjusts brightness:

• Zoom in/out:

• Speed adjustment:

• Solid/Gradient color toggle:

• Set effect direction:

3.DIY Effects:

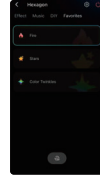


Click the effect icons at the bottom to choose different DIY effects.



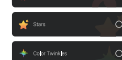
Up to 13 DIY effects.

4.Favorites:



At the top right of any effect screen, click the icon to add the current effect to the favorites list.

• Long press to manage:



• Loop playback ON/OFF:

• Adjusts loop playback interval:

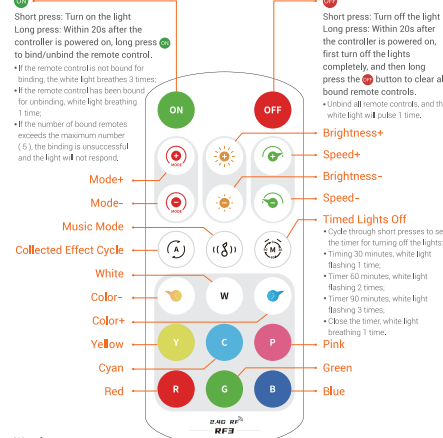
Website: www.hi-litezone.com

Email: service@hi-litezone.com

Work With 2.4G Remote Control:

The 2.4G remote control model (RF3) compatible with Hexagon:

- Support one-to-many control, one remote control can control multiple controllers;
- Support many-to-one control, each controller can bind up to 5 remote controls.



Warning:

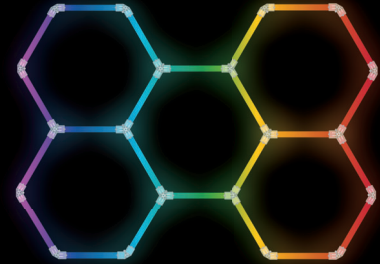
- Ensure the batteries are installed correctly according to polarity (+ and -);
- Remove and immediately recycle or dispose of batteries from equipment not used for an extended period of time according to local regulations;
- Always completely secure the battery compartment. If the battery compartment does not close securely, stop using the product, remove the batteries, and keep them away from children

Website: www.hi-litezone.com

Email: service@hi-litezone.com

litezone
Your Personalized Comfort in Light

Product Series Lumra



Web: www.hi-litezone.com
Email: service@hi-litezone.com
Tel: +1 888 488 5256

FCC WARNING

This device complies with part 15 of the FCC Rules. Operation is subject to the following two conditions: (1) This device may not cause harmful interference, and (2) this device must accept any interference received, including interference that may cause undesired operation.

Any changes or modifications not expressly approved by the party responsible for compliance could void the user's authority to operate the equipment.

NOTE: This equipment has been tested and found to comply with the limits for a Class B digital device, pursuant to Part 15 of the FCC Rules. These limits are designed to provide reasonable protection against harmful interference in a residential installation. This equipment generates, uses and can radiate radio frequency energy and, if not installed and used in accordance with the instructions, may cause harmful interference to radio communications.

However, there is no guarantee that interference will not occur in a particular installation. If this equipment does cause harmful interference to radio or television reception, which can be determined by turning the equipment off and on, the user is encouraged to try to correct the interference by one or more of the following measures:

- Reorient or relocate the receiving antenna.
- Increase the separation between the equipment and receiver.
- Connect the equipment into an outlet on a circuit different from that to which the receiver is connected.
- Consult the dealer or an experienced radio/TV technician for help.

To maintain compliance with FCC's RF Exposure guidelines. This equipment should be installed and operated with minimum 20cm distance between the radiator and your body. Use only the supplied antenna.

Litezone Lumra RGB Series

Model NO	QTY	SK-LU-T410-WRGB
Picture		
Tube 7W	x25	1545 mm 60.8"
120° V connector	x11	
120° Y connector	x11	
RGB Control power supply	x1	
Screws	x25	2214 mm 87.2"
Anchoring	x25	
Nylon zip tie	x30	
Wire nut	x3	

Note: The package includes one spare unit for each tube and connector.

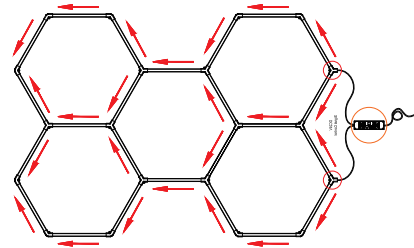
Website: www.hi-litezone.com

Email: service@hi-litezone.com

FEATURES & SPECIFICATIONS

	Performance Data	5 HEX-RGB
	Power LED Driver Power Supply Color	150W INPUT:100-240VAC 50/60Hz RGB
Physical & Listing	Control Mode	RF remote control+Bluetooth App
	Mounting	Suspension /Surface mount
	Life span	>30,000 hours
	Warranty	24 Months

Installation Instruction



Installation Direction Notice

For proper operation, install the light tube in the correct orientation:

1. Locate the "INPUT" and "OUTPUT" markings on the tube.
2. Align and install the tube from INPUT to OUTPUT as indicated.
3. Warning: If installed in the wrong direction, the light tube will not turn on.

Website: www.hi-litezone.com

Email: service@hi-litezone.com

Noted:

1. Does not support DIY, need to install as arrow direction
2. Connect the tubes by series as follows, each red circle requires its own power source
3. Please do not connect the light tubes to AC120V, its input voltage is DC20V
4. Installation must be carried out by a qualified electrician only. Do not turn on the power until installation is fully completed.
5. Test First: Before installation, plan your desired layout and conduct a test to ensure everything is working as expected
6. Handle with Care: Ensure a secure connection when attaching the light bars to the connectors. Avoid damaging the copper pins for optimal performance



1. Confirm the correct input connector



2. Connect the 120° V connector



3. Connect the 120° V connector

How to install it on the ceiling.

1. Grid roof - Tie it with zip ties
2. Flat roof - Screw the connector from the hole to the ceiling directly

Litezone Lumra RGB Controller Instructions

BanlanX App:



- supports App control for iOS and Android devices.
- Apple devices require iOS 10.0 or higher, and Android devices require Android 4.4 or higher.
- You can search "BanlanX" in App Store or Google Play to find the App, or scan the QR code to download and install.

Website: www.hi-litezone.com

Email: service@hi-litezone.com

App operation:

Register and Login:

Click on the upper right corner of the page "Sign up" → Fill in the required information → Registration success → Login

Note:
Click "Sign in without account" → Enter Guest Mode (some features may be limited).

Add Device:

After registering successfully, Add device in **Add device** or **+** → Searching page → Select the device → Finish adding

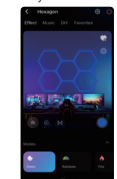
Color Correction:

Click the icon in the upper right corner of the control interface → Color Correction → Select the corresponding color button based on the actual color shown by the LED → Correction completed

Note:
Due to differences in the LED, if the Lit color does not match the actual light, calibration is required.

Control Lighting Effect:

1.Dynamic Effects:



Click the effect icons at the bottom to choose different dynamic effects.



Up to 30 dynamic effects.

• Single color settings:



• Color adjustment settings:



• Gradient color settings:



Website: www.hi-litezone.com

Email: service@hi-litezone.com