





## Smart Doorbell User Manual

Scan the QR code below to watch the camera operation video tutorial



### — . Download the mobile app

1. WeChat / browser scan two-dimensional code to download the APP well installation

2. Chinese Language Select **Android(China)**

Apple i select **IOS APP Store**

English Language Select **Android(Google Play)**



**KSJCam**

Please use the browser to open

### 二. Bluetooth networking mode for doorbells

(After pressing the red light of the doorbell device to slowly flash, the network is set up.)

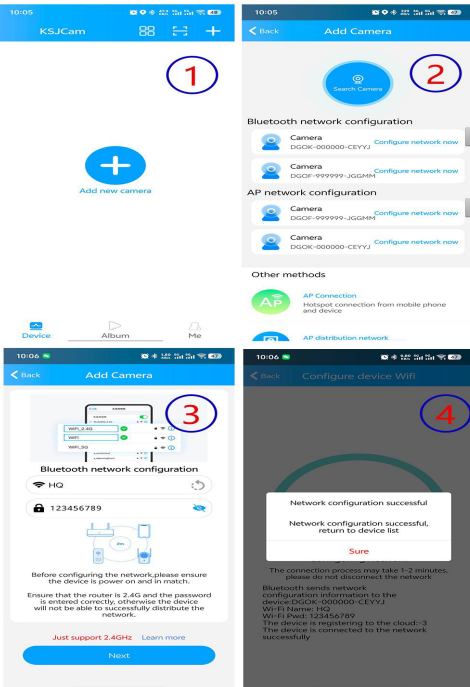
Please turn on Bluetooth and connect to wifi.

1. Open the app and click on the "+" icon (pop-up permission to choose consent)

2. There is an ID number starting with DG under the Bluetooth pairing, click to pair immediately.

3. Enter the router password and click Next

4. The ping appears that the network was successful, and the red indicator lights often indicate that the network had been successful



Matters needing attention

1. During the pairing process, the doorbell and DingDong device should be kept as close as possible.
2. Ensure that the doorbell has sufficient battery power.
3. The indicator light will automatically turn off after pairing is completed.
4. If the doorbell is not pressed within ten seconds, the indicator light of the doorbell will automatically turn off.
5. If pairing fails or re-pairing is required, please repeat the pairing process.
6. After replacing the router, you need to press and hold the doorbell reset button for 5 seconds until a reset prompt sound is heard, and then re-operate the doorbell to pair with the network.

### IV. Product Appearance and Function Introduction

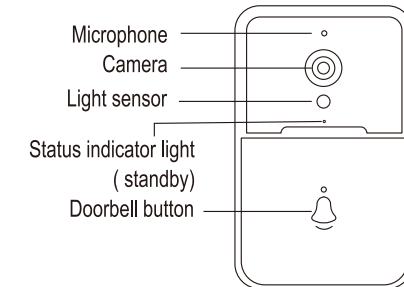
1. When someone rings the doorbell that has already been configured, the app will receive a message notification.
2. Clicking on the message will automatically redirect to the voice connection or disconnection page.
3. After exiting the video page, the device will automatically enter power-saving sleep mode after 3 seconds.
4. The doorbell features an automatic night vision switching function.
5. Features voice conversation functionality.

### V. Precautions

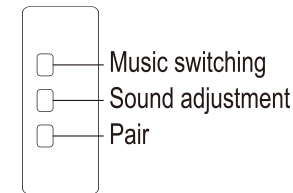
Do not use the device in dusty, humid, dirty environments or near magnetic fields to avoid causing internal circuit malfunctions.

- Please do not use this device during thunderstorm weather. Thunderstorm weather may cause equipment malfunction or electric shock hazards. Please use this device within the temperature range of 0℃ to 35℃, and store the device and its accessories within the temperature range of -40℃ to 70℃. When the

### Doorbell:



### Ding Dong:



- ambient temperature is too high or too low, it may cause equipment malfunction.
- Do not place the device in direct sunlight, such as on a windowsill. Please avoid exposing the device and its accessories to rain or moisture, as this may lead to fire or electric shock hazards. Do not place the device near heat sources or exposed flames, such as electric heaters, microwaves, ovens, water heaters, stoves, candles, or other places that may generate high temperatures. Please do not place sharp metal objects such as pins near the device, earpiece, or speaker to prevent metal objects from attaching and causing harm to you.
- After operating for a period of time, the equipment temperature will rise. If the equipment temperature rises, please do not touch it for a long time, otherwise it may cause burns, resulting in skin redness or pigmentation. · Please do not let children or pets bite or swallow the equipment or its accessories, so as to avoid causing harm to them or causing equipment malfunction or explosion.
- Children's health
- This device and its accessories may contain some small parts. Please keep the device and its accessories out of the reach of children. Children may inadvertently damage this device and its accessories, or swallow small parts, causing suffocation or other dangers.
- This device is not a toy. Children should use the device under adult supervision.
- Charger safety
- When charging the device, it is necessary to connect it to a charger. The power outlet should be installed near the device and in a location that is not easily accessible.
- When not using the device for charging, please disconnect the charger from the device and unplug the charger from the power outlet.

### VI. Common problems with video interface function indications

1. Can't the app configure the WIFI router?

Answer: Please confirm that the device is connected properly and check the status of the device indicator light: ① Rapid flashing red light = Connecting or password error ② Slow flashing red light = AP mode (not connected) ③ Steady red light = Successfully connected. Reopen the app and follow the instructions again

2. Does the camera indicate that the username and password are incorrect?

Answer: The default username for the camera is "Camera" and the password is "6666". If you forget your username or password, you can reset the camera to factory settings and then add it again

3. How to reset the camera to factory settings?

Answer: Please press the reset button on the camera for about 5 seconds until the camera restarts.

4. What is the name of the camera when adding a device?

Answer: Names starting with DG, such as: DGXX-XXXXXX-XXXXX

5. Is the function unusable or abnormal?

Answer: After opening the app, allow the required permissions to pop up within the app, or open the phone settings → Application Management to enable the required permissions for the app

6. No images when watching on the app

Answer: Move the phone to an area with strong signal or configure the device network to a router with strong signal

**This product is a legitimate household monitoring device and should be used within the scope permitted by Chinese laws and regulations. It is strictly prohibited to disassemble or use it for other illegal purposes. Otherwise, the buyer shall bear all corresponding legal responsibilities.**

### FCC Warning

This device complies with Part 15 of the FCC Rules.

Operation is subject to the following two conditions:

- (1) This device may not cause harmful interference, and
- (2) this device must accept any interference received, including interference that may cause undesired operation.

NOTE 1: This equipment has been tested and found to comply with the limits for a Class B digital device, pursuant to part 15 of the FCC Rules. These limits are designed to provide reasonable protection against harmful interference in a residential installation. This equipment generates, uses and can radiate radio frequency energy and, if not installed and used in accordance with the instructions, may cause harmful interference to radio communications. However, there is no guarantee that interference will not occur in a particular installation. If this equipment does cause harmful interference to radio or television reception, which can be determined by turning the equipment off and on, the user is encouraged to try to correct the interference by one or more of the following measures:

- Reorient or relocate the receiving antenna.
- Increase the separation between the equipment and receiver.
- Connect the equipment into an outlet on a circuit different from that to which the receiver is connected.
- Consult the dealer or an experienced radio/TV technician for help.

NOTE 2: Any changes or modifications to this unit not expressly approved by the party responsible for compliance could void the user's authority to operate the equipment.

The device has been evaluated to meet general RF exposure requirement. The device can be used in portable exposure condition without restriction.