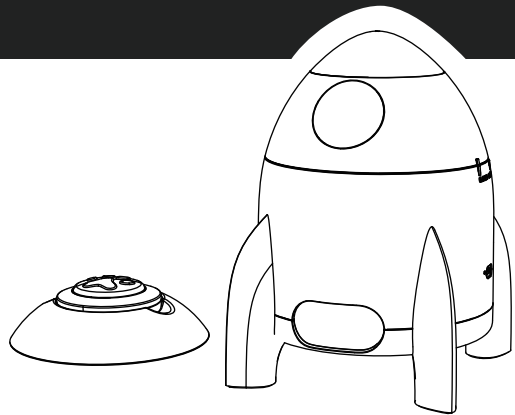


Product Overview

Getting Started – Charge & Launch

How to Load the Treats

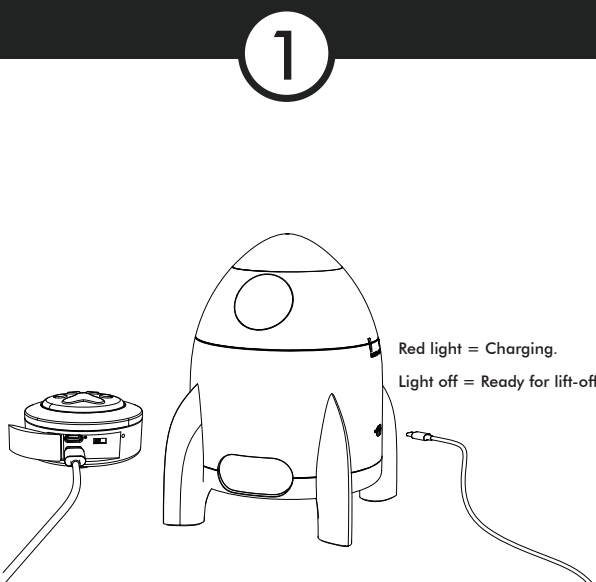
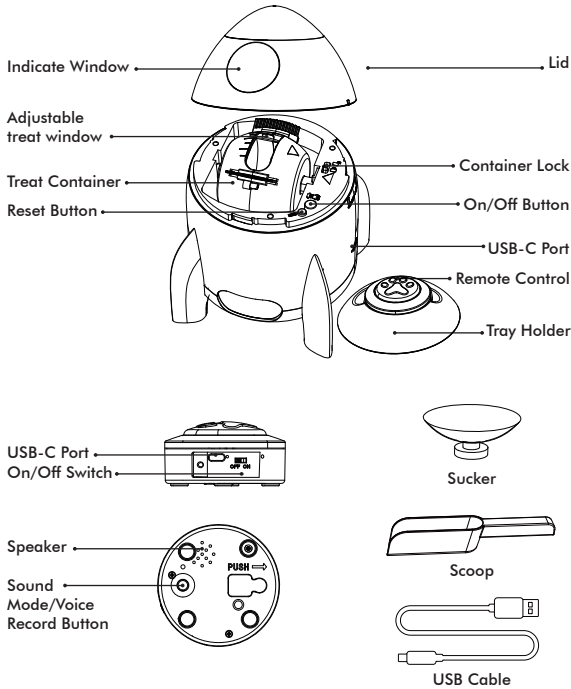
Power On & Ready to Play



IQ ROCKET
SMART TREAT DISPENSER

- Dog IQ Training
- Voice Recording
- Remote Control
- USB Rechargeable

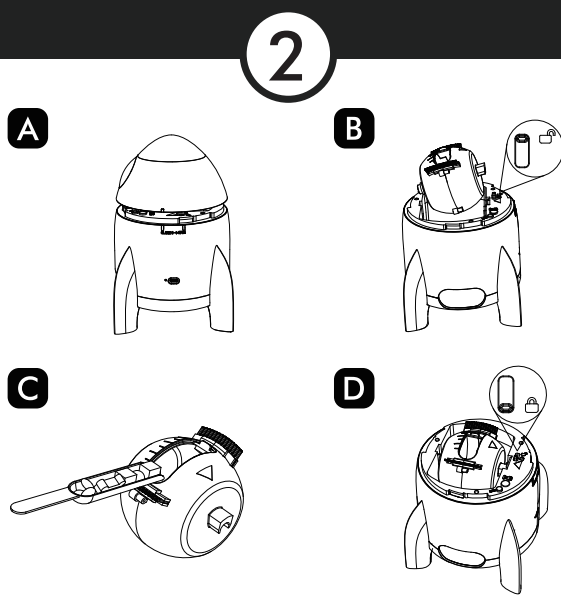
USER MANUAL



Let's fuel up your treat rocket!

Plug the included USB-A to USB-C cable into the port on the base

Note: Your dispenser can't operate while it's charging.

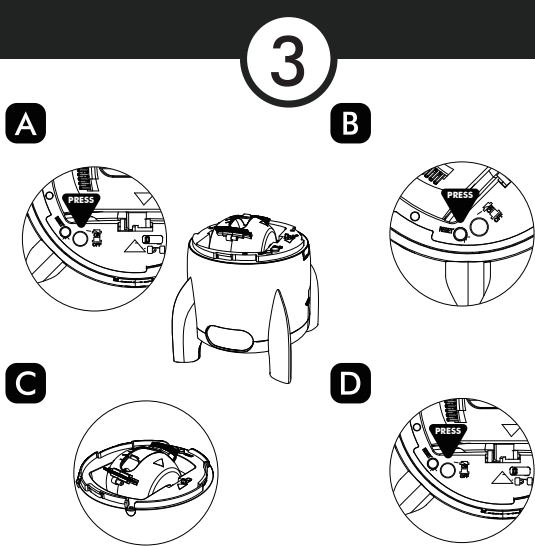


Time to stock the treat bay!

- A. Turn the lid counter-clockwise to open.
- B. Unlock the treat container and gently

remove it.

- C. Fill with your pup's favorite kibble (small, dry pieces work best!).
- D. Slide it back in and lock it up tight.



Here's how to wake up your dog's new best friend

- A. Twist the lid open. Press the power button until the blue light flashes.
- B. Press the reset button

once – the grain bin will spin to show it's ready!
C. Adjust the kibble dispensing panel properly.
D. To turn off, press the power button again.

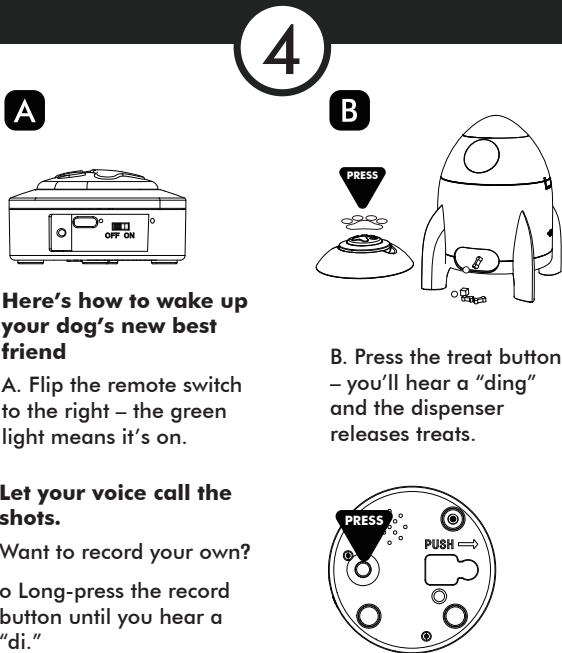
Using the Remote Control

How to Secured the Remote

Training Tips

Cleaning & Maintenance

Notes



Here's how to wake up your dog's new best friend

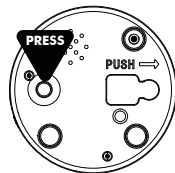
- A. Flip the remote switch to the right – the green light means it's on.

Let your voice call the shots.

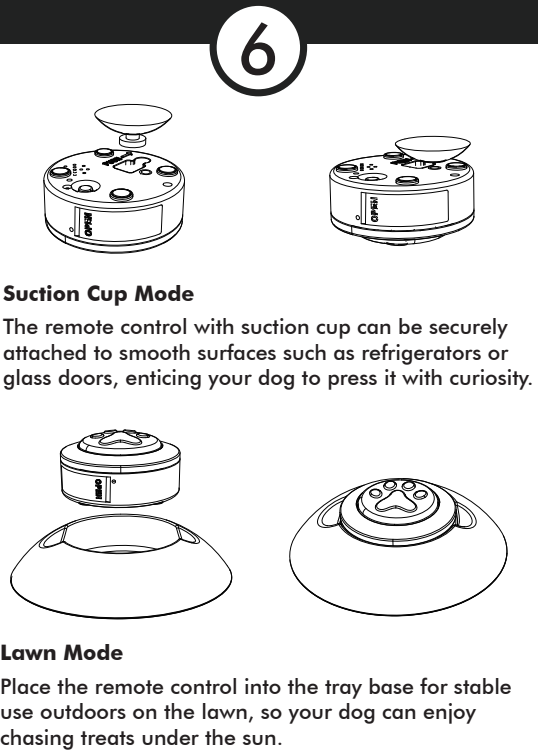
- Want to record your own?
 - o Long-press the record button until you hear a "di."

- o Speak your message (within 30 seconds) – "didi" means done!

Tip: Record in a quiet room for best clarity.



Tap the record button to switch between 4 preset sounds + 1 custom voice.

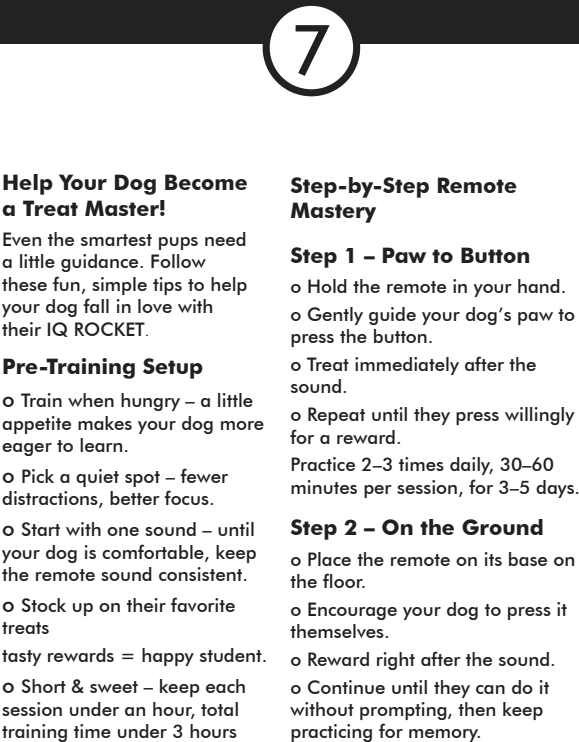


Suction Cup Mode

The remote control with suction cup can be securely attached to smooth surfaces such as refrigerators or glass doors, enticing your dog to press it with curiosity.

Lawn Mode

Place the remote control into the tray base for stable use outdoors on the lawn, so your dog can enjoy chasing treats under the sun.



Help Your Dog Become a Treat Master!

Even the smartest pups need a little guidance. Follow these fun, simple tips to help your dog fall in love with their IQ ROCKET.

Pre-Training Setup

- o Train when hungry – a little appetite makes your dog more eager to learn.
- o Pick a quiet spot – fewer distractions, better focus.
- o Start with one sound – until your dog is comfortable, keep the remote sound consistent.
- o Stock up on their favorite treats: tasty rewards = happy student.
- o Short & sweet – keep each session under an hour, total training time under 3 hours

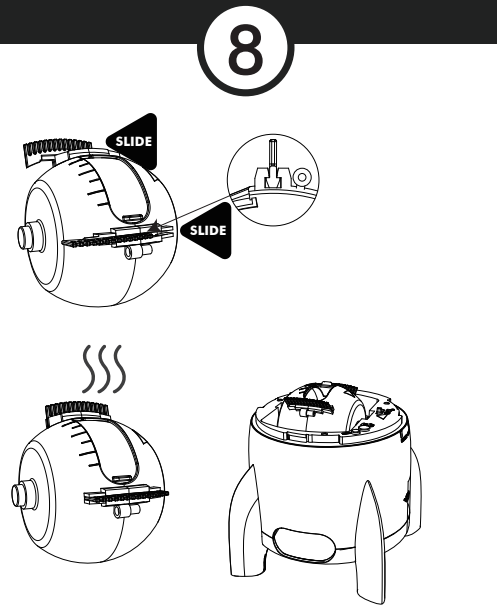
Step-by-Step Remote Mastery

Step 1 – Paw to Button

- o Hold the remote in your hand.
 - o Gently guide your dog's paw to press the button.
 - o Treat immediately after the sound.
 - o Repeat until they press willingly for a reward.
- Practice 2–3 times daily, 30–60 minutes per session, for 3–5 days.

Step 2 – On the Ground

- o Place the remote on its base on the floor.
- o Encourage your dog to press it themselves.
- o Reward right after the sound.
- o Continue until they can do it without prompting, then keep practicing for memory.



Keep it fresh, keep it safe.

- o Remove the treat container for easy rinsing.
- o Do not wash the main unit or the remote control.
- o Dry the container thoroughly before reassembling.

1. Remove all packaging before you use the device, dispose of all packing material properly. Some items may be packed in poly bags. Danger of suffocation, keep out of reach of children and pets.
2. Regularly clean the kibble container and tray to keep your pet's treats fresh.
3. Do not wash the main unit or the remote control.
4. Always use the included USB cable for best charging performance.
5. The unit cannot be operated while charging.
6. Adult supervision is required when children are near the device.
7. Do not try to disassemble the device.

FCC Notice

This device complies with FCC rules. It's safe to use in your home, and won't interfere with most devices. Just don't make unauthorized modifications.

FCC Warning:

This equipment has been tested and found to comply with the limits for a Class B digital device, pursuant to part 15 of the FCC Rules. These limits are designed to provide reasonable protection against harmful interference in a residential installation. This equipment generates, uses and can radiate radio frequency energy and, if not installed and used in accordance with the instructions, may cause harmful interference to radio communications. However, there is no guarantee that interference will not occur in a particular installation. If this equipment does cause harmful interference to radio or television reception, which can be determined by turning the equipment off and on, the user is encouraged to try to correct the interference by one or more of the following measures:

- Reorient or relocate the receiving antenna.
- Increase the separation between the equipment and receiver.
- Connect the equipment into an outlet on a circuit different from that to which the receiver is connected.
- Consult the dealer or an experienced radio/TV technician for help.

Caution: Any changes or modifications to this device not explicitly approved by manufacturer could void your authority to operate this equipment.

This device complies with part 15 of the FCC Rules. Operation is subject to the following two conditions:

(1) This device may not cause harmful interference, and (2) this device must accept any interference received, including interference that may cause undesired operation.

This equipment complies with FCC radiation exposure limits set forth for an uncontrolled environment. This equipment should be installed and operated with minimum distance 0cm between the radiator and your body.